

KEYED NOTES

- HANDICAPPED RAMP PER C.O.A. STD DWG # 2441. 1:12 SLOPE MAX.
- EXISTING HEADER CURB.
- NEW 6" HEADER CURB PER C.O.A. STD DWG #2415
- CONCRETE WHEEL STOP.
- ACCESSIBLE PARKING SIGN TYPICAL ALL HANDICAPPED PARKING SPACES. SEE DETAIL A3 THIS SHEET.
- EXISTING SIDEWALK.
- CURB AT EDGE OF STREET.
- NEW 4'-0" SPLIT FACE CMU RETAINING WALL.
- NEW 34" HIGH SPLIT FACE CMU WALL.
- STEEL BOLLARD FILLED WITH CONCRETE, TYP.
- 8" SPLIT FACED CMU WALL. 7'-6" HIGH.
- 6" THICK CONCRETE APRON. 4000 PSI, 3/4" AGGREGATE W/ 6X6-10/10 WWM OR EQUAL.
- MOTORCYCLE PARKING SIGN. SEE DETAIL A3 THIS SHEET.
- EXISTING ELECTRICAL TRANSFORMER.
- PROPERTY LINE.
- RIBBON BICYCLE RACK (4 SPACES).
- CONCRETE SIDEWALK PER C.O.A. STD DWG #2430.
- ENCLOSURE GATE.
- EXISTING SIGNAGE (SEE A1/AS-101)
- ASPHALT PAVING
- HANDICAP PARKING SYMBOL.
- 4" WIDE PAINTED STRIPES AT 12" O.C. COLOR WHITE.

NOTES:

REQUIRED PARKING:	PROVIDED:	23 (4 COMPACT)
REQUIRED ACCESSIBLE PARKING:	PROVIDED:	2 (BOTH VAN)
REQUIRED MOTORCYCLE PARKING:	PROVIDED:	1
REQUIRED BICYCLE PARKING:	PROVIDED:	2
	PROVIDED:	4
TOTAL PREVIOUSLY APPROVED SITE PLAN BUILDING SQUARE FOOTAGE:		
WENDY'S		3235 SF
JIFFY LUBE		2192 SF
AUTOZONE		6759 SF
JUST BRAKES		3400 SF
TOTAL PREVIOUSLY APPROVED BLDG. SF:		
		15586 SF
10% ALLOWABLE INCREASE W/ADMINISTRATIVE AMENDMENT =		
		1559 SF
ACTUAL SQ. FT. INCREASE =		
		1200 SF

ARCHITECTS

Fanning Bard Tatum Architects AIA, Ltd.

6100 Indian School Rd. NE Ste 210
Albuquerque NM 87110

Phone 505/883.5200
Facsimile 505/884.5390
Web www.fbtarch.com

CONSULTANT

DRB ADMINISTRATIVE SITE PLAN AMENDMENT

PROJECT NO. 1003364

APPLICATION NO. 06 DRB-01232

DATE

DRB SITE DEVELOPMENT PLAN SIGNOFF APPROVAL:

TRAFFIC ENGINEERING, TRANSPORTATION DIVISION	DATE
<i>John D. ...</i>	9-20-06
WATER UTILITY DEPARTMENT	DATE
<i>Christina ...</i>	9/20/06
PARKS AND RECREATION DEPARTMENT	DATE
<i>Bradley ...</i>	9/20/06
CITY ENGINEER	DATE
<i>N/A</i>	9/22/06
ENVIRONMENTAL HEALTH DEPARTMENT (CONDITIONAL)	DATE
<i>Michael ...</i>	9/20/06
SOLID WASTE MANAGEMENT	DATE
<i>Chris ...</i>	9/20/06
DRB CHAIRPERSON, PLANNING DEPARTMENT	DATE
<i>Andrew ...</i>	9/22/06
PROJECT NUMBER	1003364
APPLICATION NUMBER	06 DRB-01232

This plan is consistent with the specific Site Development Plan approved by the Environmental Planning Commission (EPC), dated _____, and the Findings and Conditions in the Official Notification of Decision are satisfied.

is an Infrastructure List Required? () Yes () No

If yes, then a set of approved DRG plans with a work order is required for any construction within Public Right-of-Way or for construction of public improvements.

MARK	DATE	DESCRIPTION
▲	1/16/07	ADDITION OF NOTES FOR CLARIFICATION
▲	1/16/07	DIMENSION CHANGE
▲	1/16/07	FIRE LANE, ACCESSIBLE RAMP, ACCESSIBLE PATH
▲	1/16/07	RECONFIGURATION OF SPACES TO ALLOW FOR ADDITION OF 1 SPACE. RELOCATED ACCESSIBLE PARKING.
▲	1/16/07	ACCESSIBLE PARKING RELOCATED TO SOUTH OF BLDG.
▲	1/16/07	1 SPACE DELETED, 3 CHANGED TO COMPACT CAR

PROJECT NO:

CAD DWG FILE: AS-101.DWG

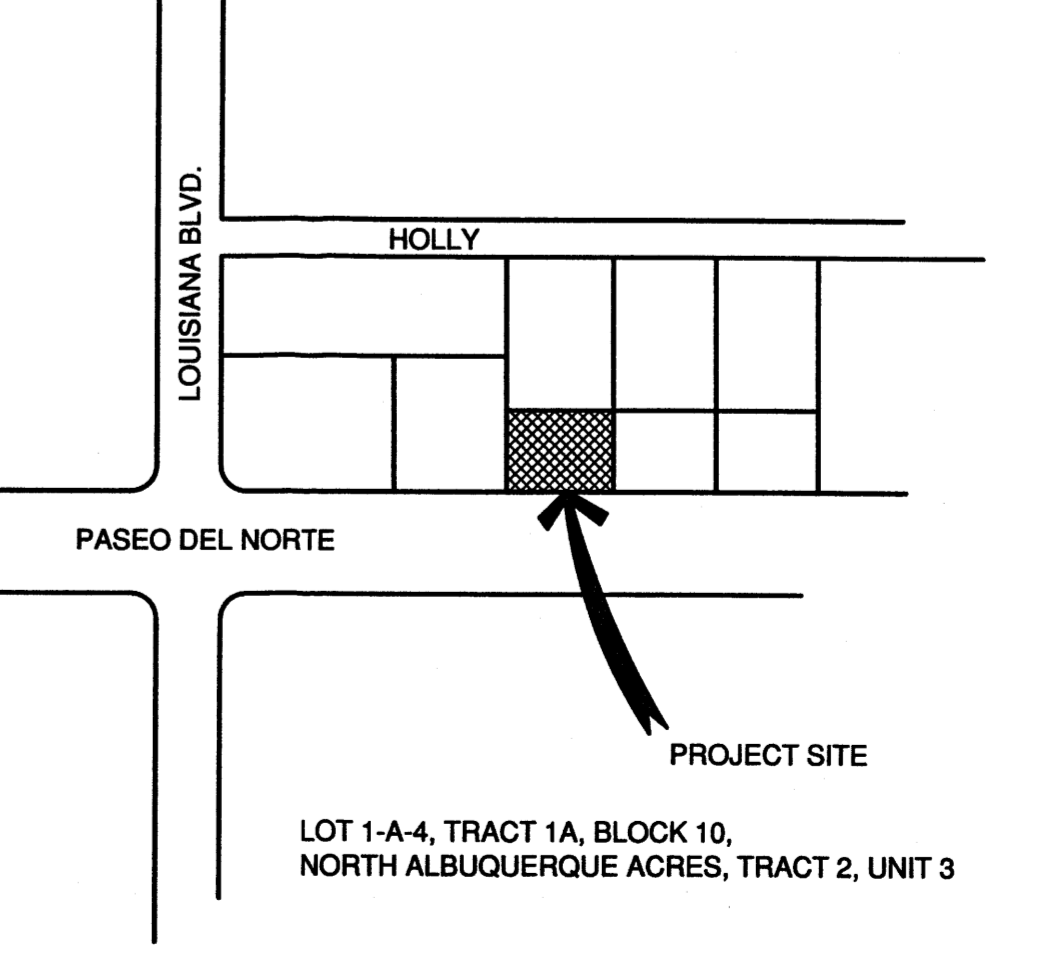
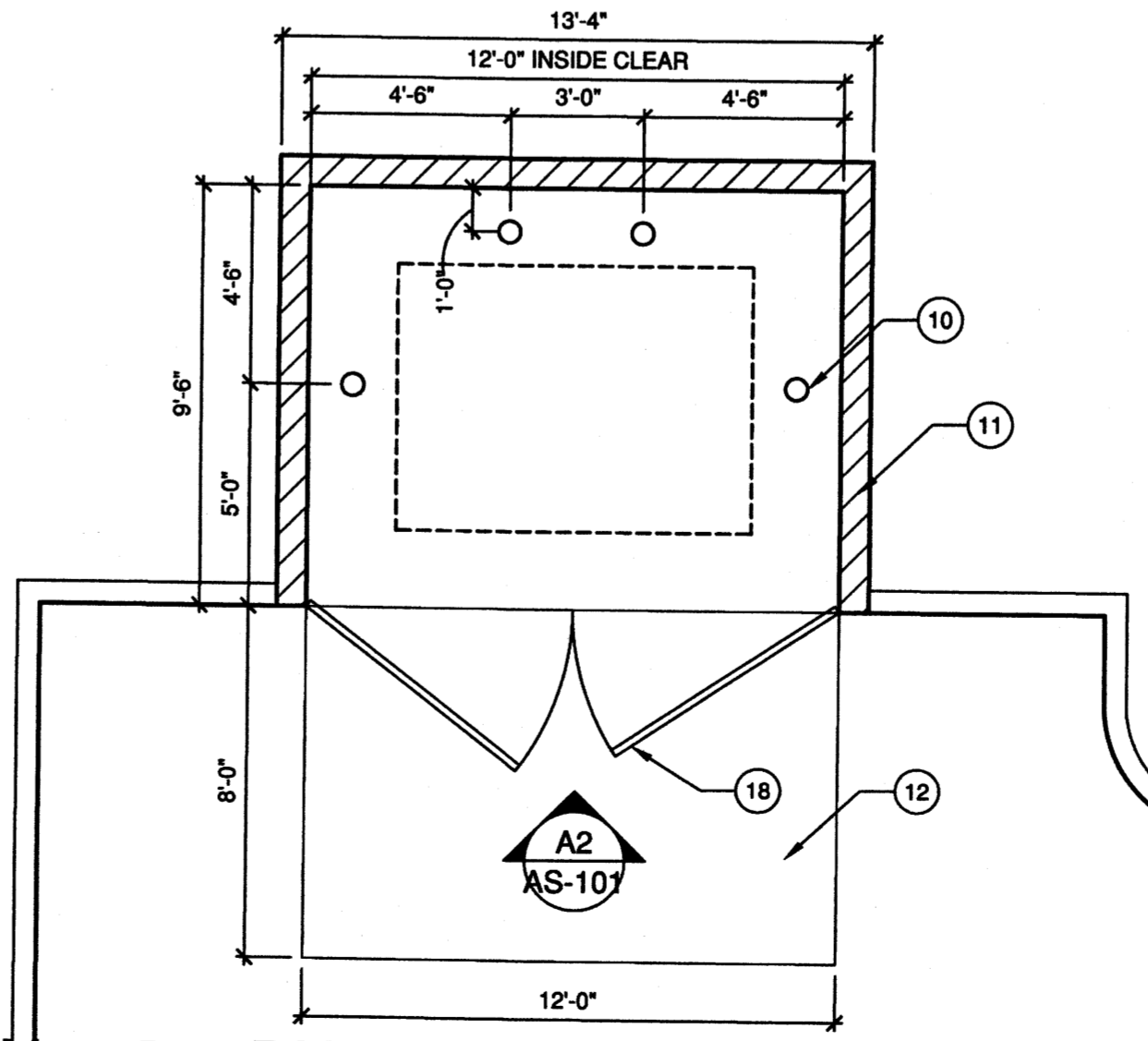
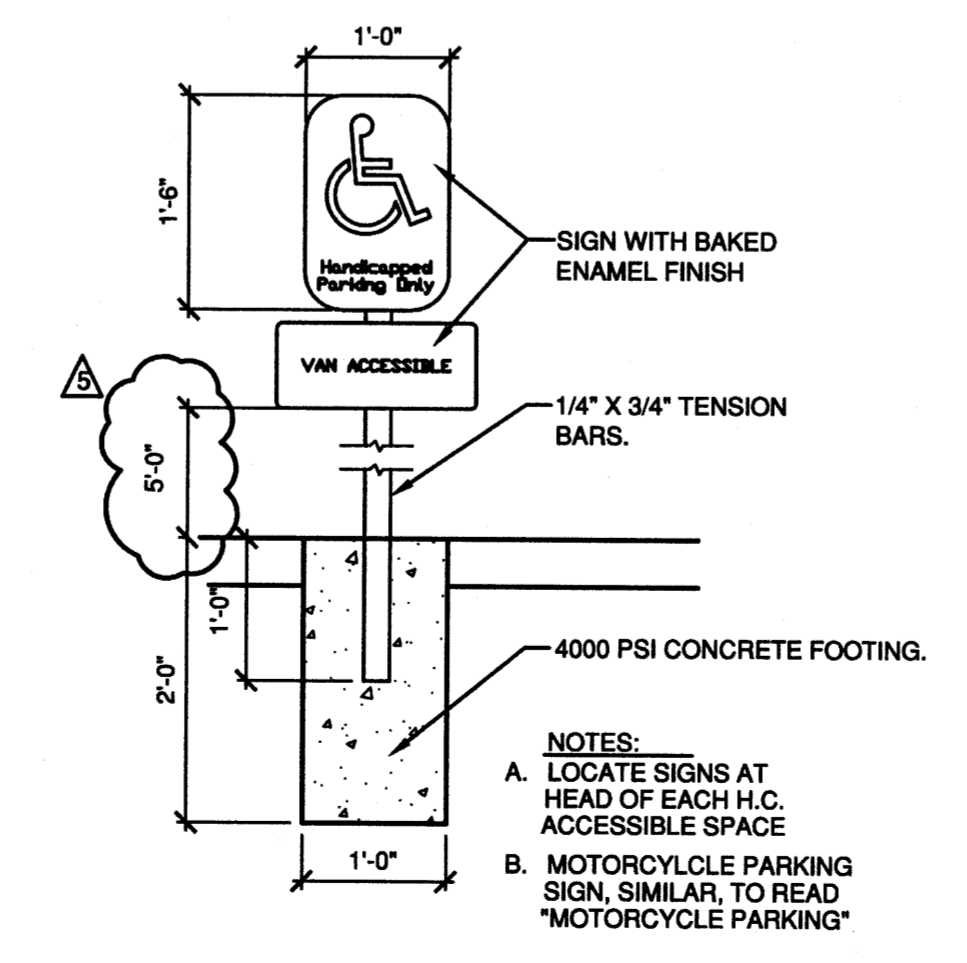
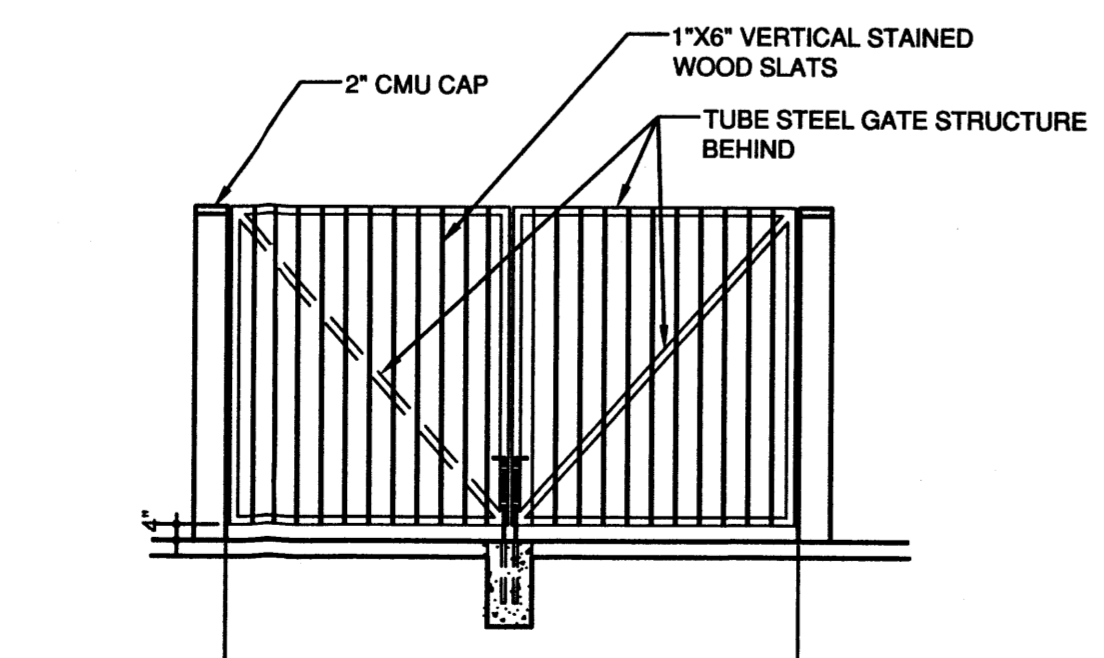
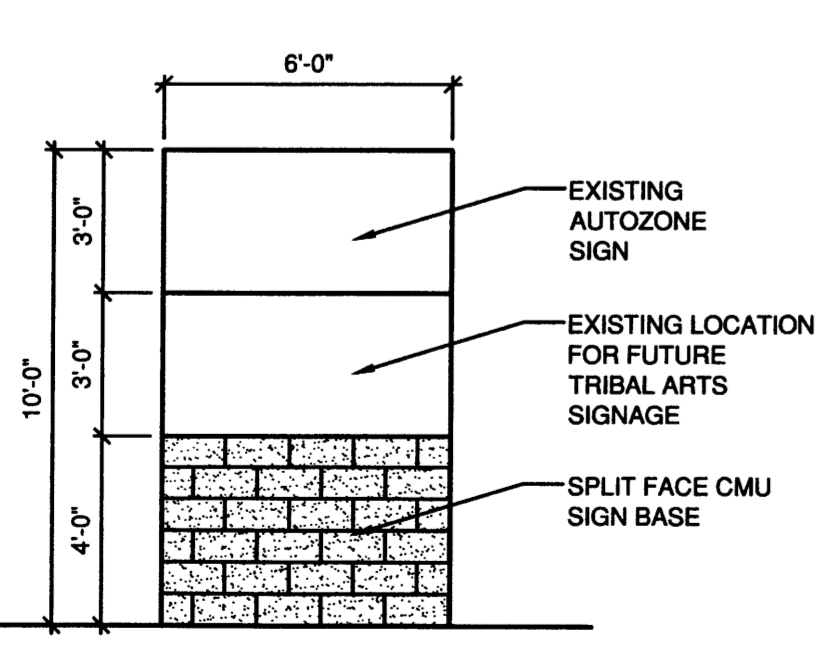
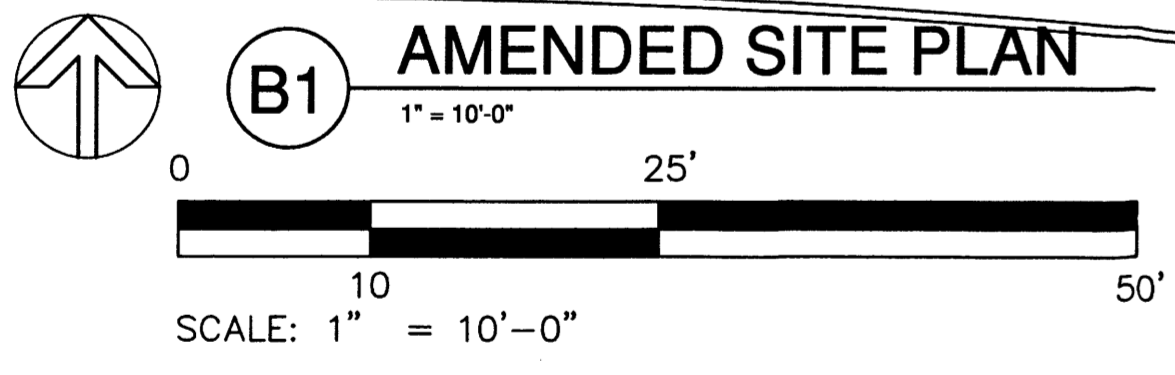
DRAWN BY: JLL

CHECKED BY: JLL

SHEET TITLE

SITE DEVELOPMENT PLAN FOR BUILDING PERMIT AMENDED LOUISIANA/PASEO

AS-101



PROJECT 1003364