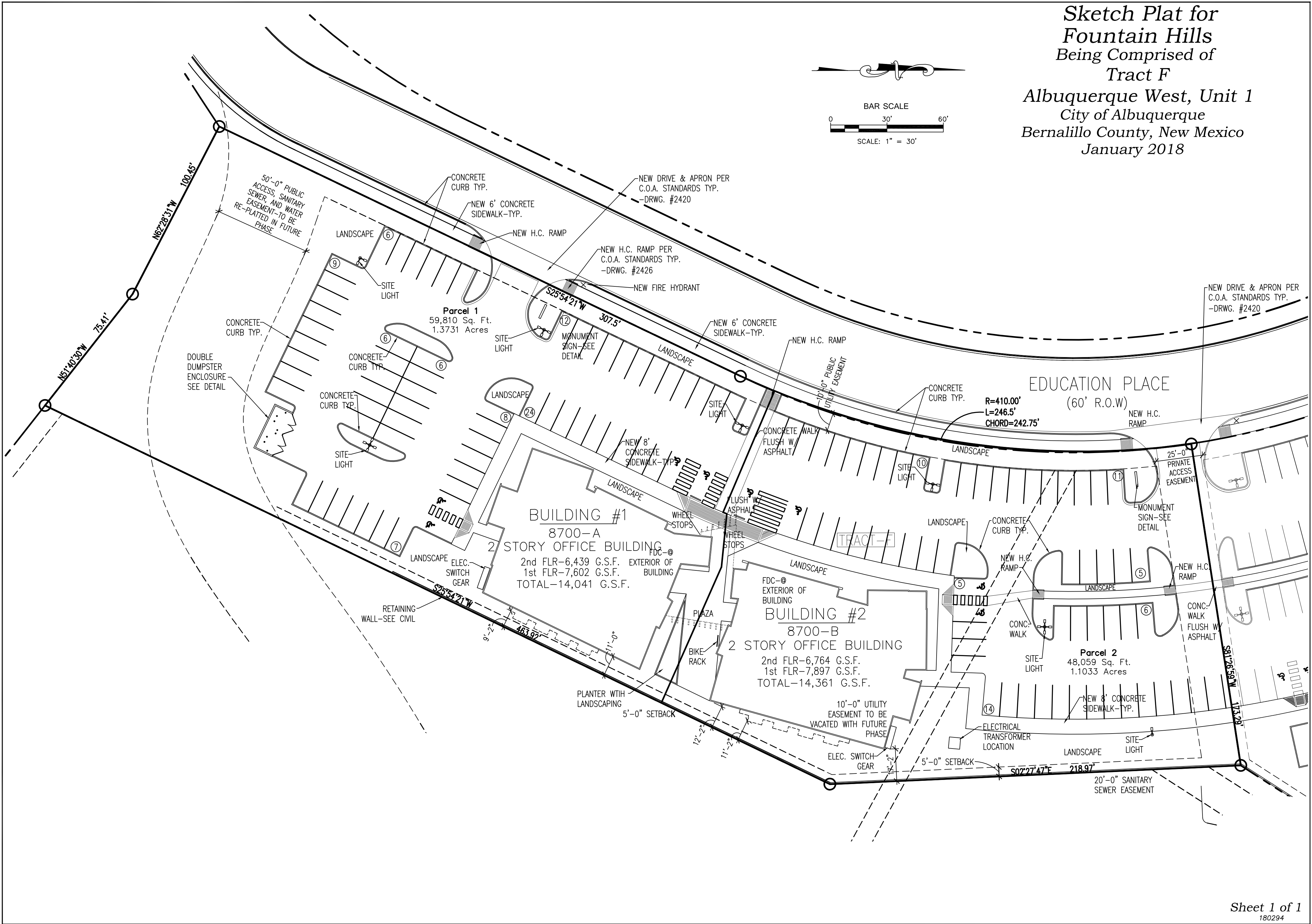
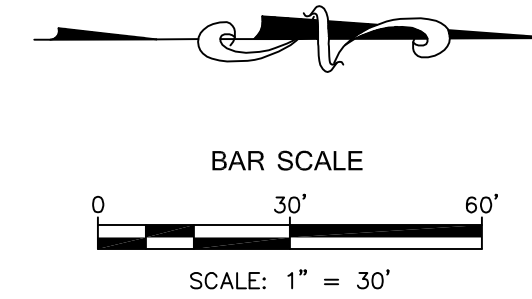


Sketch Plat for  
 Fountain Hills  
 Being Comprised of  
 Tract F  
 Albuquerque West, Unit 1  
 City of Albuquerque  
 Bernalillo County, New Mexico  
 January 2018



50'-0" PUBLIC ACCESS, SANITARY SEWER, AND WATER EASEMENT-TO BE RE-PLATTED IN FUTURE PHASE

Parcel 1  
 59,810 Sq. Ft.  
 1.3731 Acres

**BUILDING #1**  
 8700-A  
 2 STORY OFFICE BUILDING  
 FDC-@  
 2nd FLR-6,439 G.S.F. EXTERIOR OF BUILDING  
 1st FLR-7,602 G.S.F.  
 TOTAL-14,041 G.S.F.

**BUILDING #2**  
 8700-B  
 2 STORY OFFICE BUILDING  
 FDC-@  
 2nd FLR-6,764 G.S.F. EXTERIOR OF BUILDING  
 1st FLR-7,897 G.S.F.  
 TOTAL-14,361 G.S.F.

Parcel 2  
 48,059 Sq. Ft.  
 1.1033 Acres

EDUCATION PLACE  
 (60' R.O.W)  
 R=410.00'  
 L=246.5'  
 CHORD=242.75'

NEW DRIVE & APRON PER C.O.A. STANDARDS TYP. -DRWG. #2420

NEW H.C. RAMP

20'-0" SANITARY SEWER EASEMENT