

GENERAL NOTES:  
 [A] ALL PARKING DRIVES TO BE ASPHALT CAPABLE OF SUPPORTING THE IMPOSED LOAD OF FIRE APPARATUS WEIGHING AT LEAST 75,000 POUNDS.  
 [B] FIRE APPARATUS ACCESS ROADS SHALL NOT EXCEED 10 PERCENT IN GRADE.

**CODE DATA**

**BUILDING ADDRESS:** 4011 PASEO DEL NORTE NW, ALBUQUERQUE, NEW MEXICO 87114  
**CONSTRUCTION TYPE:** TYPE V-B  
**OCCUPANT LOAD:** FIRST FLOOR: 40 OCCUPANTS, SECOND FLOOR: 30 OCCUPANTS, 70 TOTAL OCCUPANTS  
**SQUARE FOOTAGE:** FIRST FLOOR: 4,000 GROSS SF, SECOND FLOOR: 3,000 GROSS SF, TOTAL BUILDING: 7,000 GROSS SF  
**FIRE PROTECTION:** FULLY AUTOMATED SPRINKLER SYSTEM COMPLYING WITH NFPA 13 (NON-RESIDENTIAL) AND SECTIONS 504.2 AND 903.3.1.1 INSTALLED THROUGHOUT.  
 SHOP DRAWINGS WILL BE SUBMITTED TO THE FIRE MARSHAL'S OFFICE FOR REVIEW AND APPROVAL OF ANY INSTALLATION OR MODIFICATION TO THE FIRE SPRINKLER SYSTEM, FIRE ALARM SYSTEM, KITCHEN SUPPRESSION SYSTEM, OR ANY OTHER FIRE RELATED SYSTEM.  
 THE FIRE SPRINKLER SYSTEM WILL BE SUPERVISED WHEN REQUIRED BY THE 2015 INTERNATIONAL FIRE CODE.  
**BUILDING HEIGHT:** 28'-0" ABOVE FIRST FLOOR FINISH FLOOR LEVEL.  
**FIRE SEPARATION:** NO SEPARATION REQUIRED.  
**FIRE FLOW CALCS:** PER 2015 IFC, APPENDIX B, TABLE B105.1

TOTAL BUILDING SF: V-B @ 7,000 SF  
 TOTAL BUILDING FIRE FLOW = 2,250 GALLONS/MINUTE (75% REDUCTION FOR FIRE SPRINKLER SYSTEM)  
 TOTAL BUILDING FIRE FLOW = 563 GALLONS/MINUTE

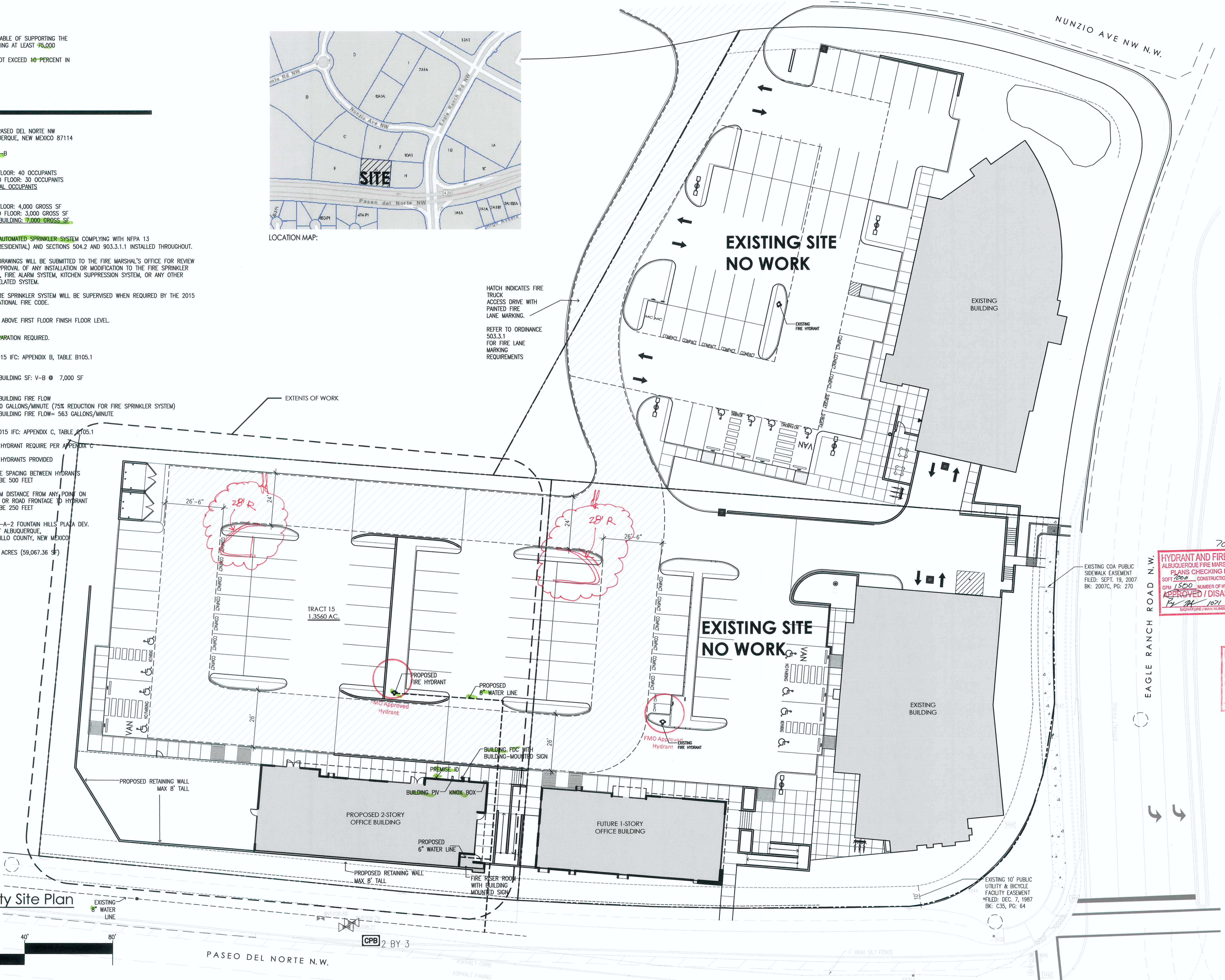
**FIRE HYDRANT DISTRIBUTION:** PER 2015 IFC, APPENDIX C, TABLE C105.1  
 1 FIRE HYDRANT REQUIRE PER APPENDIX C  
 1 FIRE HYDRANTS PROVIDED  
 AVERAGE SPACING BETWEEN HYDRANTS SHALL BE 500 FEET  
 MAXIMUM DISTANCE FROM ANY POINT ON STREET OR ROAD FRONTAGE TO HYDRANT SHALL BE 250 FEET

**LEGAL DESCRIPTION:** LOT 10-A-2 FOUNTAIN HILLS PLAZA DEV. CITY OF ALBUQUERQUE, BERNALILLO COUNTY, NEW MEXICO  
 1.3560 ACRES (59,067.36 SF)



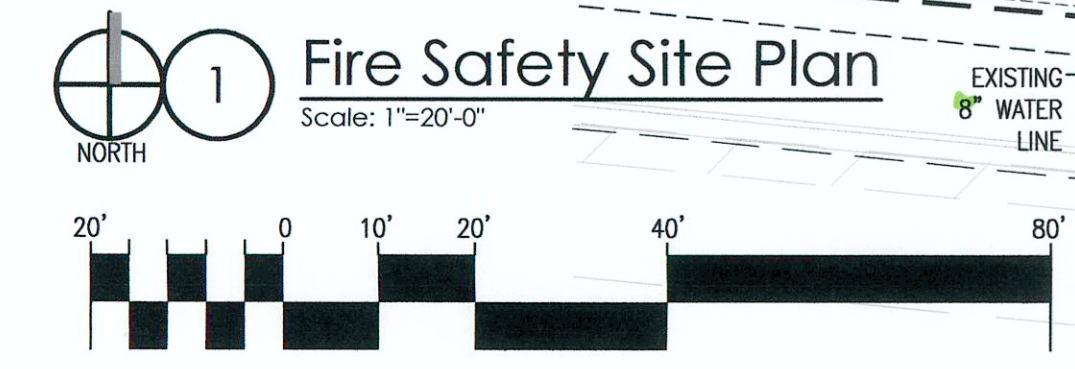
LOCATION MAP:

HATCH INDICATES FIRE TRUCK ACCESS DRIVE WITH PAINTED FIRE LANE MARKING.  
 REFER TO ORDINANCE 503.3.1 FOR FIRE LANE MARKING REQUIREMENTS



701-18  
 HYDRANT AND FIRE ACCESS  
 ALBUQUERQUE FIRE MARSHAL'S OFFICE  
 PLANS CHECKING DIVISION  
 SOFT 2000 CONSTRUCTION TYPE V-B  
 GPM 1500 NUMBER OF HYDRANTS 1  
 APPROVED / DISAPPROVED  
 BY JH 10/21 2/8/18  
 SIGNATURE / MAIN NUMBER / DATE

701-18  
 HYDRANT AND FIRE ACCESS  
 ALBUQUERQUE FIRE MARSHAL'S OFFICE  
 PLANS CHECKING DIVISION  
 SOFT 2000 CONSTRUCTION TYPE V-B  
 GPM 1500 NUMBER OF HYDRANTS 1  
 APPROVED / DISAPPROVED  
 BY JH 10/21 2/8/18  
 SIGNATURE / MAIN NUMBER / DATE



DESCRIPTION  
 BY  
 DATE  
 REV  
 mullen heller architecture  
 JOHN DOUGLAS HELLMER NO. 2827 REGISTERED ARCHITECT  
 MULLEN HELLER ARCHITECTURE  
 1718 CENTRAL AVE SW | STE. D  
 ALBUQUERQUE, NM | 87109  
 P | 505.268.4144  
 F | 505.268.4244  
 www.mullenheller.com  
 JOB NUMBER 17-44  
 DRAWN BY AV  
 PROJECT MGR JDH  
 DATE 1-19-2018  
 PHASE CD  
 PROJECT Smiles For Kids -Building 4 Shell  
 4011 Paseo Del Norte N.W  
 Albuquerque, NM 87114  
 TITLE Fire Safety Site Plan  
 SHEET FIRE 1