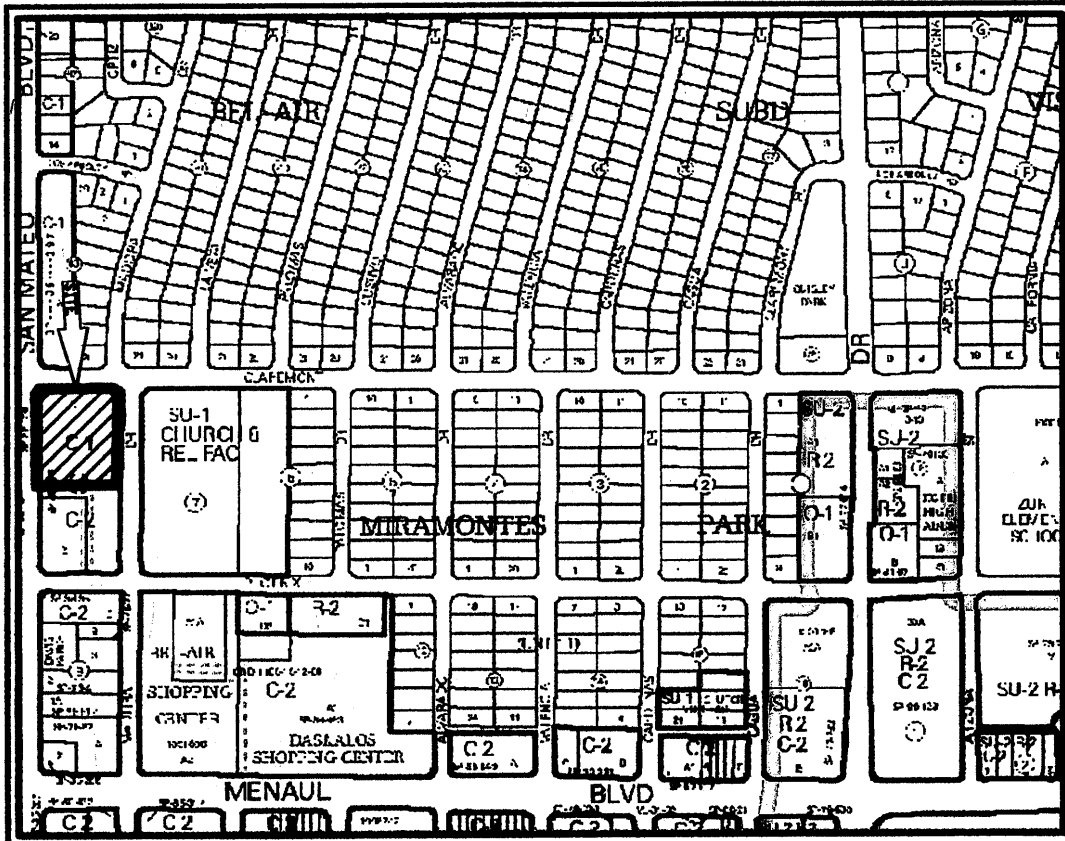


# SITE PLAN FOR SUBDIVISION LOTS 1-A BLOCK 8 MIRAMONTES PARK, UNIT 1

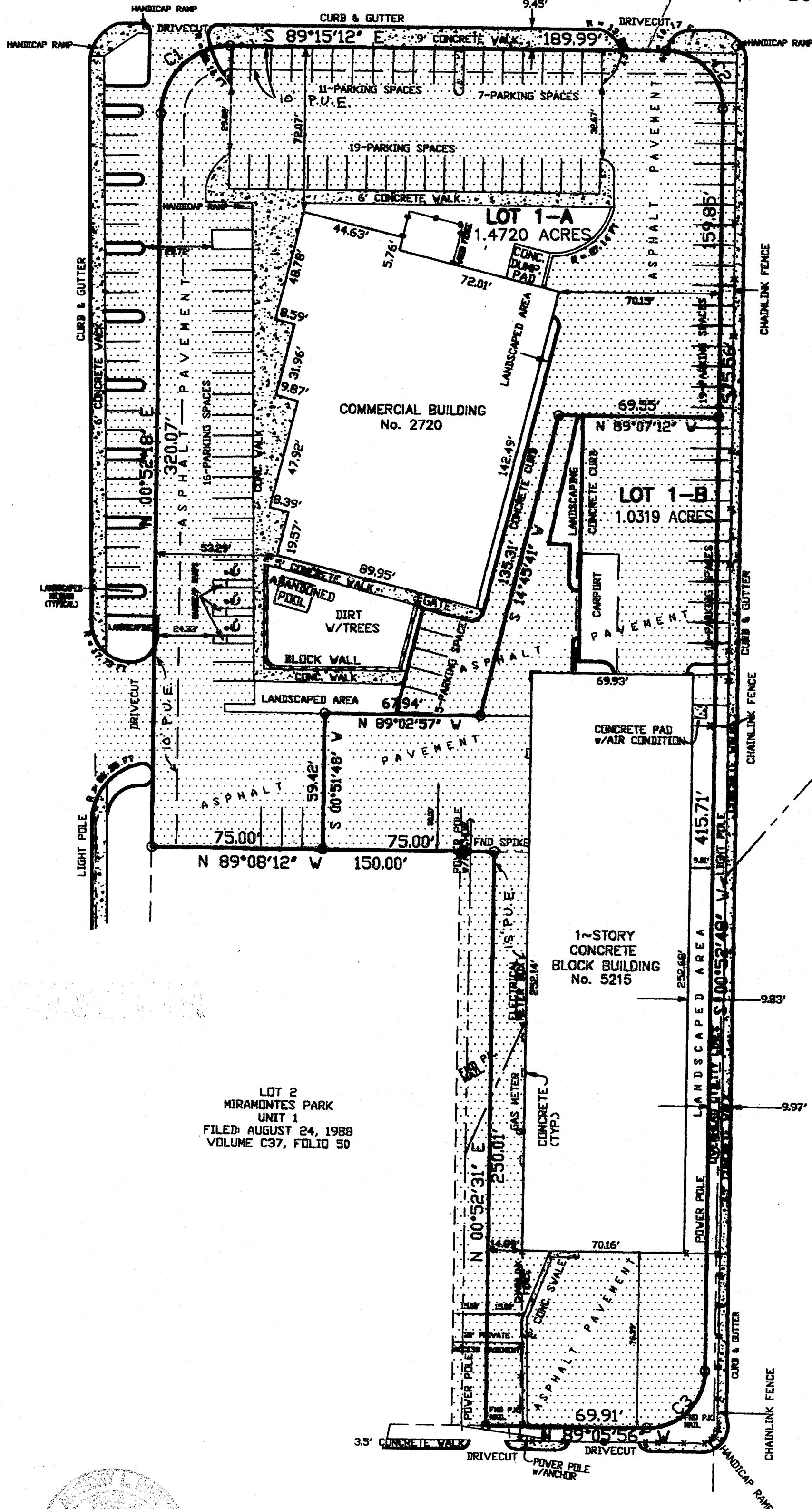
WITHIN  
SECTION 12, TOWNSHIP 10 NORTH, RANGE 3  
EAST, N.M.P.M. CITY OF ALBUQUERQUE  
BERNALILLO COUNTY, NEW MEXICO  
NOVEMBER, 2009



VICINITY MAP No. H-18

CLAREMONT AVENUE N.E.  
60' R/W

WIDE N EXISTING DRIVE PAD TO  
24' PER COA STANDARDS

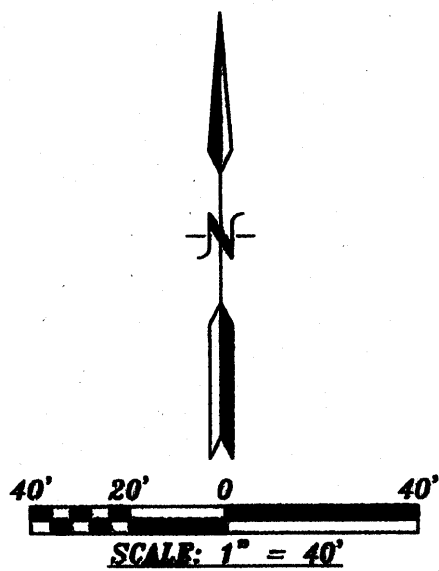


MADEIRA DRIVE N.E.  
60' R/W

PHOENIX AVENUE N.E.  
60' R/W

### LEGAL DESCRIPTION

LOT NUMBERED ONE (1) IN BLOCK NUMBERED EIGHT (8) OF MIRAMONTES PARK, UNIT 1, ALBUQUERQUE, BERNALILLO COUNTY, NEW MEXICO, AS THE SAME IS SHOWN AND DESIGNATED ON THE PLAT THEREOF, FILED IN THE OFFICE OF THE COUNTY CLERK OF BERNALILLO COUNTY, NEW MEXICO ON AUGUST 24, 1988 IN VOLUME C37, FOLIO 50.



LOT	Sq. Ft.	ACREAGE
LOT 1-A SPORTING STORE FLOOR AREA RATIO	64,120 0.24	1.4720
LOT 1-B WAREHOUSE FLOOR AREA RATIO	44,950 0.39	1.0319

ALL RAMPS MEET ADA REQUIREMENTS

### CURVE DATA

**C1**  
R = 30.00'  
D = 89°52'30"  
CB = S 45°48'33" W  
CH = 42.38'  
L = 47.06'

**C2**  
R = 25.00'  
D = 90°08'00"  
CB = N 44°11'12" W  
CH = 35.40'  
L = 39.33'

**C3**  
R = 25.00'  
D = 90°01'16"  
CB = N 45°53'26" E  
CH = 35.36'  
L = 39.28'

DRB 1003565

APPROVED: *[Signature]* 10-31-11  
DATE: 10-31-11  
DRB CHAIRPERSON, PLANNING DEPARTMENT

ENVIRONMENTAL HEALTH DEPARTMENT DATE: NA  
SOLID WASTE MANAGEMENT DATE: 12/9/09  
Parks & Recreation Department

ABCWA DATE: 12-9-09  
DATE: 10-31-11  
TRAFFIC ENGINEERING, TRANSPORTATION DIVISION

CITY ENGINEER DATE: 12-9-09

LOT 2  
MIRAMONTES PARK  
UNIT 1  
FILED: AUGUST 24, 1988  
VOLUME C37, FOLIO 50



*[Signature]* 11-24-09  
Anthony L. Harris, N.M.P.S. #11463 HARRIS SURVEYING, INC.  
2412-D Monroe Street, NE • Albuquerque, New Mexico 87110  
Telephone (505) 889-8056 • FAX (505) 889-8645

1003565