

# PLAT OF LOTS 1-P1 THRU 4-P1 ROHAN SUBDIVISION

WITHIN  
SECTION 18, T. 11 N., R. 4 E., N.M.P.M.  
AS PROJECTED IN THE ELENA GALLEGOS GRANT  
CITY OF ALBUQUERQUE  
BERNALILLO COUNTY, NEW MEXICO  
JUNE 2016

AGRS MONUMENT "1\_B20"  
NM STATE PLANE COORDINATES  
CENTRAL ZONE  
X = 1,550,483.349  
Y = 1,524,154.945-NAD 1983  
EL. = 5477.179-NAVD 1988  
G-G = 0.999651137  
DELTA ALPHA = -00° 10' 24.45"

AGRS MONUMENT "7\_C19"  
NM STATE PLANE COORDINATES  
CENTRAL ZONE  
X = 1,550,417.138  
Y = 1,522,068.520-NAD 1983  
EL. = 5485.723-NAVD 1988  
G-G = 0.999650745  
DELTA ALPHA = -00° 10' 24.78"

### EASEMENTS:

- ① EXISTING 30' ROADWAY EASEMENT (9-10-31, D-21).
- ② 32.00' PRIVATE ACCESS, PUBLIC DRAINAGE AND UTILITY EASEMENT GRANTED BY THIS PLAT. ALL THE PROPERTY OWNERS ARE RESPONSIBLE FOR THE MAINTENANCE OF THIS EASEMENT.
- ③ 20.00' PRIVATE ACCESS, PUBLIC DRAINAGE UTILITY EASEMENT GRANTED BY THIS PLAT. ALL THE PROPERTY OWNERS ARE RESPONSIBLE FOR THE MAINTENANCE OF THIS EASEMENT.
- ④ EXISTING ACCESS EASEMENT FOR LOT 9-P1 LA VISTA. FILED: 12/17/2012, DOC #2012132615.
- ⑤ 5.00' PUBLIC DRAINAGE EASEMENT GRANTED BY THIS PLAT. ALL THE PROPERTY OWNERS ARE RESPONSIBLE FOR THE MAINTENANCE OF THIS EASEMENT.

### CURVE TABLE

CURVE	LENGTH	RADIUS	TANGENT	CHORD	CHORD DIRECTION	DELTA
C1	39.37	25.00	25.10	35.42	S45°15'56"W	90°13'23"
C2	23.54	15.00	14.98	21.20	N45°12'03"E	89°54'24"

### PUBLIC UTILITY EASEMENTS

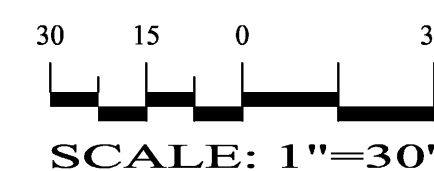
**PUBLIC UTILITY EASEMENTS SHOWN ON THIS PLAT ARE GRANTED FOR THE COMMON AND JOINT USE OF:**  
**A. PUBLIC SERVICE COMPANY OF NEW MEXICO ("PNM"), A NEW MEXICO CORPORATION, (PNM ELECTRIC) FOR INSTALLATION, MAINTENANCE, AND SERVICE OF OVERHEAD AND UNDERGROUND ELECTRICAL LINES, TRANSFORMERS, AND OTHER EQUIPMENT AND RELATED FACILITIES REASONABLY NECESSARY TO PROVIDE ELECTRICAL SERVICES.**  
**B. NEW MEXICO GAS COMPANY FOR INSTALLATION, MAINTENANCE, AND SERVICE OF NATURAL GAS LINES, VALVES AND OTHER EQUIPMENT AND FACILITIES REASONABLY NECESSARY TO PROVIDE NATURAL GAS SERVICES.**  
**C. QWEST FOR THE INSTALLATION, MAINTENANCE, AND SERVICE OF SUCH LINES, CABLE, AND OTHER RELATED EQUIPMENT AND FACILITIES REASONABLY NECESSARY TO PROVIDE COMMUNICATION SERVICES.**  
**D. CABLE TV FOR THE INSTALLATION, MAINTENANCE, AND SERVICE OF SUCH LINES, CABLE, AND OTHER RELATED EQUIPMENT AND FACILITIES REASONABLY NECESSARY TO PROVIDE CABLE SERVICES.**

INCLUDED, IS THE RIGHT TO BUILD, REBUILD, CONSTRUCT, RECONSTRUCT, LOCATE, RELOCATE, CHANGE, REMOVE, REPLACE, MODIFY, RENEW, OPERATE AND MAINTAIN FACILITIES FOR PURPOSES DESCRIBED ABOVE, TOGETHER WITH FREE ACCESS TO, FROM, AND OVER SAID EASEMENTS, WITH THE RIGHT AND PRIVILEGE OF GOING UPON, OVER AND ACROSS ADJOINING LANDS OF GRANTOR FOR THE PURPOSES SET FORTH HEREIN AND WITH THE RIGHT TO UTILIZE THE RIGHT OF WAY AND EASEMENT TO EXTEND SERVICES TO CUSTOMERS OF GRANTEE, INCLUDING SUFFICIENT WORKING AREA SPACE FOR ELECTRIC TRANSFORMERS, WITH THE RIGHT AND PRIVILEGE TO TRIM AND REMOVE TREES, SHRUBS OR BUSHES WHICH INTERFERE WITH THE PURPOSES SET FORTH HEREIN. NO BUILDING, SIGN, POOL (ABOVEGROUND OR SUBSURFACE), HOT TUB, CONCRETE OR WOOD POOL DECKING, OR OTHER STRUCTURE SHALL BE ERRECTED OR CONSTRUCTED ON SAID EASEMENTS, NOR SHALL ANY WELL BE DRILLED OR OPERATED THEREON. PROPERTY OWNERS SHALL BE SOLELY RESPONSIBLE FOR CORRECTING ANY VIOLATIONS OF NATIONAL ELECTRICAL SAFETY CODE BY CONSTRUCTION OF POOLS, DECKING, OR ANY STRUCTURES ADJACENT TO OR NEAR EASEMENTS SHOWN ON THIS PLAT.  
 EASEMENTS FOR ELECTRIC TRANSFORMER/SWITCHGEARS, AS INSTALLED, SHALL EXTEND TEN (10) FEET IN FRONT OF TRANSFORMER/SWITCHGEAR DOORS AND FIVE (5) FEET ON EACH SIDE.

**DISCLAIMER**  
 IN APPROVING THIS PLAT, PUBLIC SERVICE COMPANY OF NEW MEXICO (PNM) AND NEW MEXICO GAS COMPANY (NMGC) DID NOT CONDUCT A TITLE SEARCH OF THE PROPERTIES SHOWN HEREON. CONSEQUENTLY, PNM AND NMGC DO NOT WAIVE OR RELEASE ANY EASEMENT OR EASEMENT RIGHTS WHICH MAY HAVE BEEN GRANTED BY PRIOR PLAT, REPLAT OR OTHER DOCUMENT AND WHICH ARE NOT SHOWN ON THIS PLAT.

**Wyoming Blvd., NE**  
(78.00 R.O.W.)

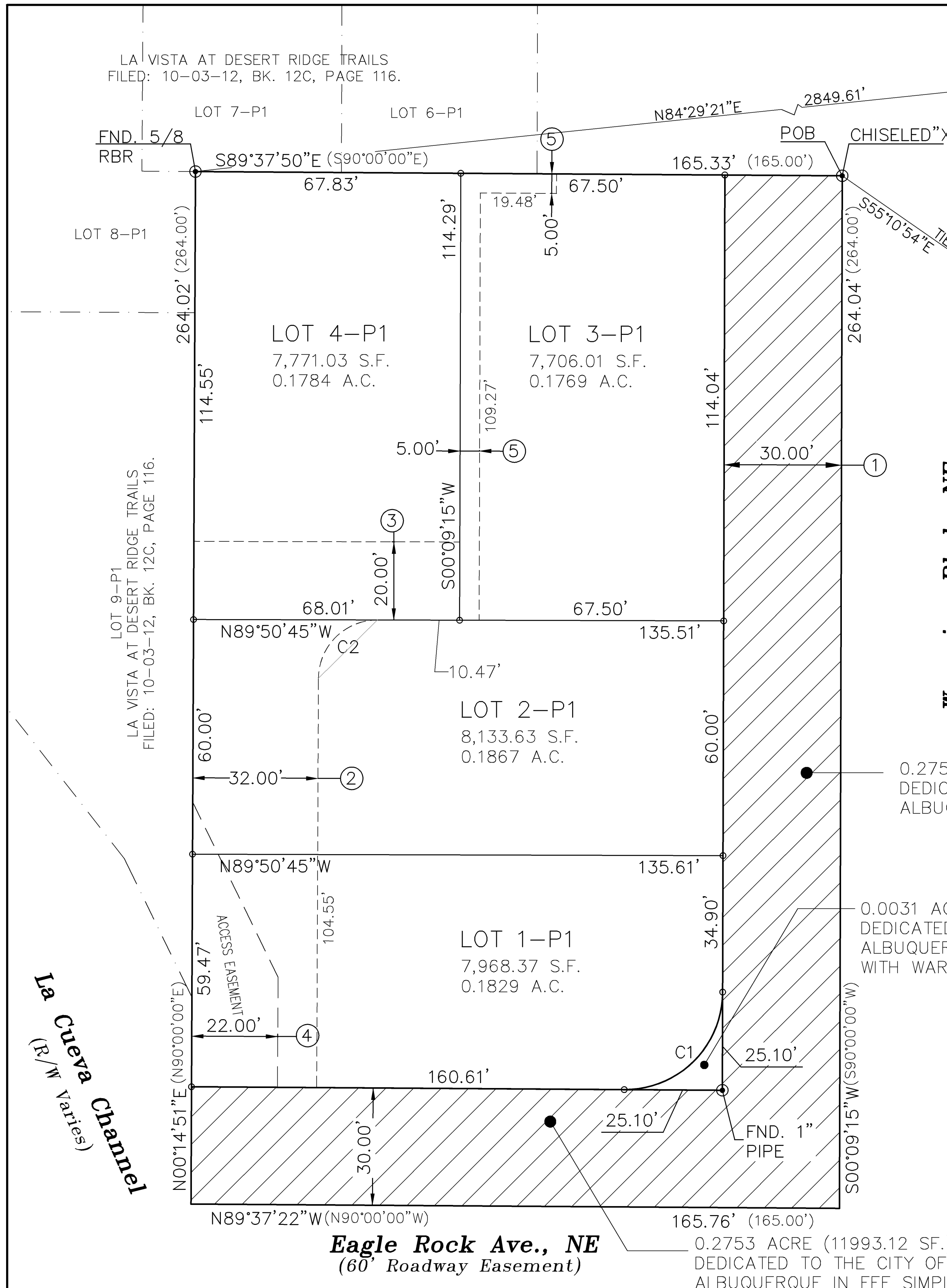
GRAPHIC SCALE



**SBS CONSTRUCTION  
AND ENGINEERING, LLC**

10209 SNOWFLAKE CT., NW  
ALBUQUERQUE, NEW MEXICO 87114  
(505)804-5013

SHEET 2 OF 2



LA VISTA AT DESERT RIDGE TRAILS  
FILED: 10-03-12, BK. 12C, PAGE 116.

LA VISTA AT DESERT RIDGE TRAILS  
FILED: 10-03-12, BK. 12C, PAGE 116.

**La Cueva Channel**  
(R/W Varies)

**Eagle Rock Ave., NE**  
(60' Roadway Easement)

0.2753 ACRE (11993.12 SF.)  
DEDICATED TO THE CITY OF  
ALBUQUERQUE IN FEE SIMPLE.

0.2753 ACRE (11993.12 SF.)  
DEDICATED TO THE CITY OF  
ALBUQUERQUE IN FEE SIMPLE.

0.0031 ACRE (135.35 SF.)  
DEDICATED TO THE CITY OF  
ALBUQUERQUE IN FEE SIMPLE  
WITH WARRANTY COVENANTS.