

PLANT LEGEND

● Evergreen
○ Deciduous

Trees

SYMBOL	BOTANICAL NAME COMMON NAME	MATURE SIZE WxHt
□	<i>Cercis occidentalis</i> Western redbud	12'x15'
□	<i>Chilopsis linearis</i> Desert willow	15'x20'
□	<i>Forestiera neomexicana</i> New Mexican olive	15'x15'
□	<i>Juniperus monosperma</i> One seed juniper (female)	12'x10'
□	<i>Pinus edulis</i> Pinon	18'x18'
□	<i>Pinus edlarica</i> Afghan pine	40'x70'
□	<i>Pistachia chinensis</i> Chinese pistach	30'x30'
□	<i>Platanus wrightii</i> Arizona sycamore	35'x50'
□	<i>Quercus emoryi</i> Emory oak	25'x50'
□	<i>Quercus grisea</i> Gray oak	25'x35'
□	<i>Quercus turbinella</i> Scrub oak	12'x12'
□	<i>Quercus virginiana</i> Southern live oak	30'x40'

Cacti / Succulents / Yucca

SYMBOL	BOTANICAL NAME COMMON NAME
○	<i>Opuntia phaeacantha</i> Native prickly pear
○	<i>Cylindropuntia imbricata</i> Native cholla
○	<i>Yucca bacata</i> Banana yucca
○	<i>Yucca glauca</i> Narrowleaf yucca

Grasses, Perennials and Ground Covers

SYMBOL	BOTANICAL NAME COMMON NAME
○	<i>Muhlenbergia rigens</i> Deer grass
○	<i>Nolina microcarpa</i> Beargrass
○	<i>Rhus aromatica</i> 'Gro-Low' Prostrate sumac
○	<i>Juniperus sabina</i> Buffalo Buffalo juniper
○	<i>Equisetum hyemale</i> Horsetail reed
○	<i>Penstemon parryii</i> Parry's penstemon

Shrubs

SYMBOL	BOTANICAL NAME COMMON NAME
○	<i>Achillea</i> sp. Yarrow
○	<i>Cowania mexicana</i> Cliffrose
○	<i>Caryopteris x clandonensis</i> Blue mist
○	<i>Ericameria laricifolia</i> Turpentine bush
○	<i>Juniperus chinensis</i> Sea Green juniper
○	<i>Ceanothus fendleri</i> Desert ceanothus
○	<i>Mahonia aquafolia</i> Compact Oregon grape
○	<i>Potentilla fruticosa</i> Cinquefoil
○	<i>Chamaebatiaria millefollia</i> Fernbush
○	<i>Prunus besseyi</i> Sand cherry
○	<i>Cercocarpus montanus</i> Cercocarpus montanus
○	<i>Cercocarpus ledifolius</i> Curl leaf mtn. mahogany
○	<i>Krasheneninnikovia lanata</i> Winterfat
○	<i>Fallugia paradoxa</i> Apache plume
○	<i>Ericameria nauseosus</i> Chamisa

LANDSCAPE AREAS

A	2,195 s.f.	N	6,965 s.f.
B	10,709 s.f.	O	1,008 s.f.
C	887 s.f.	P	4,609 s.f.
D	1,134 s.f.	Q	124 s.f.
E	1,294 s.f.	R	396 s.f.
F	1,193 s.f.	S	203 s.f.
G	4,584 s.f.	T	6,610 s.f.
H	887 s.f.	U	4,653 s.f.
I	1,134 s.f.	V	970 s.f.
J	1,111 s.f.	W	6,603 s.f.
K	210 s.f.	X	1,456 s.f.
L	4,869 s.f.	Y	5,789 s.f.
M	3,421 s.f.	Z	5,469 s.f.

CALCULATIONS

Site Area:	218,077 s.f.
Building Pad Area:	19,952 s.f.
Net Site Area:	198,125 s.f.
Required Landscaped Area (15%):	29,718 s.f.
Provided Landscaped Area (39%):	78,483 s.f.
Parking Spaces Provided	197
Required Trees (1 per 10 spaces)	20
Provided Trees (min 25' tall)	90

RESPONSIBILITY OF MAINTENANCE

The landscape and irrigation system shall be maintained by the owner such that plant materials will remain healthy and vigorous and the irrigation system shall function to ensure this.

COMPLIANCE WITH LANDSCAPE REGULATIONS

This landscape has been designed to be compliance with COA Landscape Regulations

COMPLIANCE with WATER CONSERVATION

The landscape design shall comply with the Water Conservation Ordinance 6-1-1-1

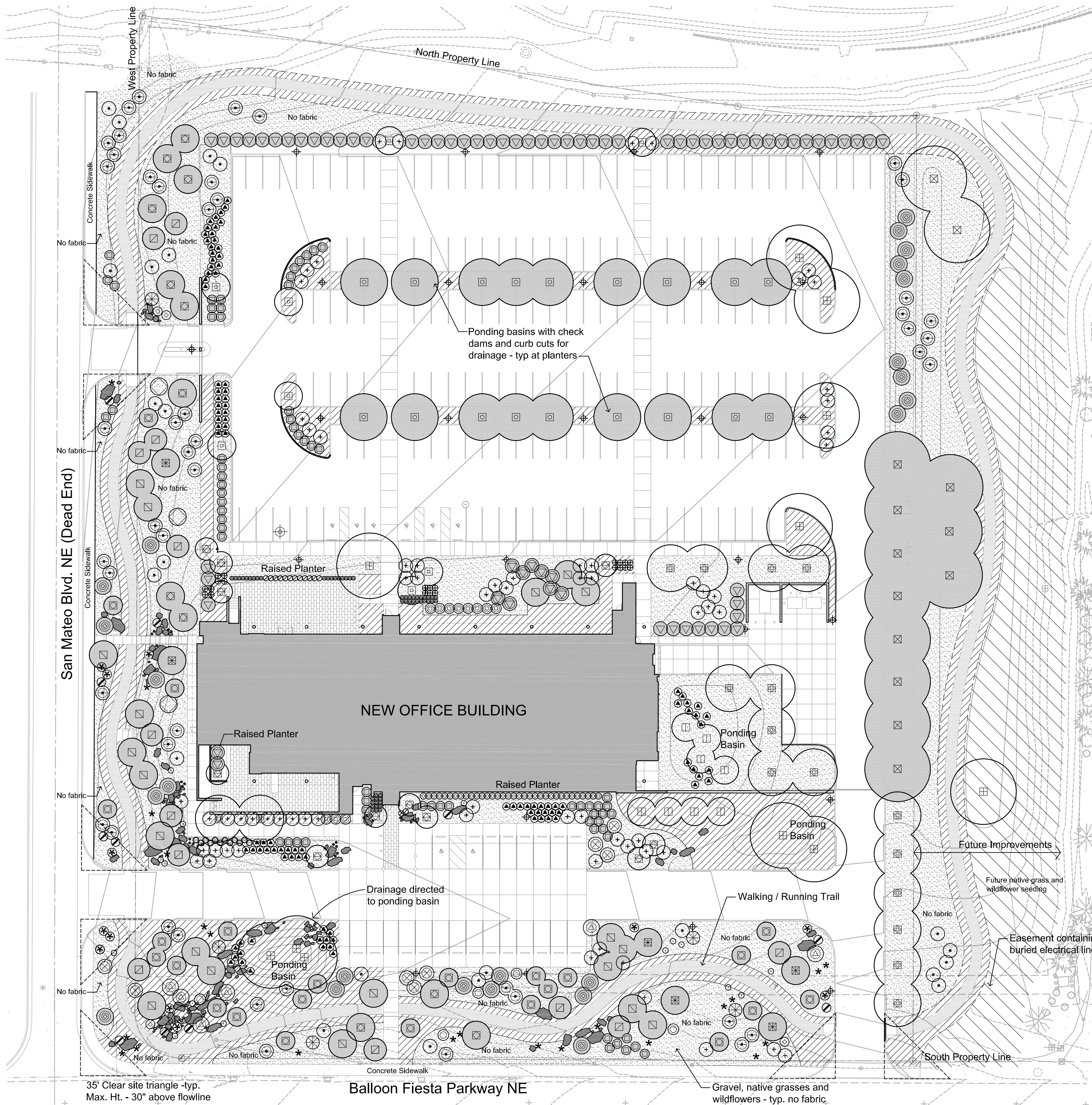
DESCRIPTION OF IRRIGATION SYSTEM

The landscape will be sustained by an automatic irrigation system consisting of a drip system for trees, shrubs and ground covers.

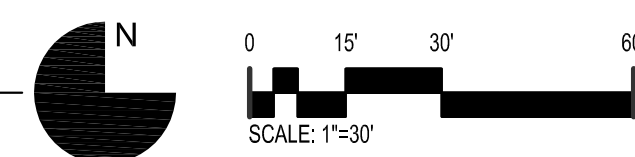
SEEDING

SEE SHEET L-301

□	Wildflower and native grass seeded area
---	---



1 LANDSCAPE PLAN Plant symbols on plan show plants at approximately mature size
1" = 30'-0" NOTE: This site has exceptional views and an effort has been made in the tree quantity and layout to preserve those views. The landscape density and coverage is based on a planned succession of additional native shrubs by natural seed dispersal.



LANDSCAPE MATERIALS LEGEND

BOULDERS Gray / brown limestone	LANDSCAPE GRAVEL Denotes 7/16" average diameter at 3" deep "CANYON GOLD" gravel. Fabric underlay only where noted. Gray / brown limestone	LANDSCAPE COBBLE Denotes 6" deep 4"-6" cobble in landscape areas. Fabric underlay in all locations. Gray / brown limestone	TRAIL Denotes 3" deep CRUSHER FINES over landscape fabric along the walking trail. Gray / brown limestone
---	---	--	---

NM Mutual Home Office

5201 Balloon Fiesta Parkway

SHEET TITLE
SITE PLAN

DESIGN PHASE
DRB Hearing

SHEET NUMBER

SHEET #2

