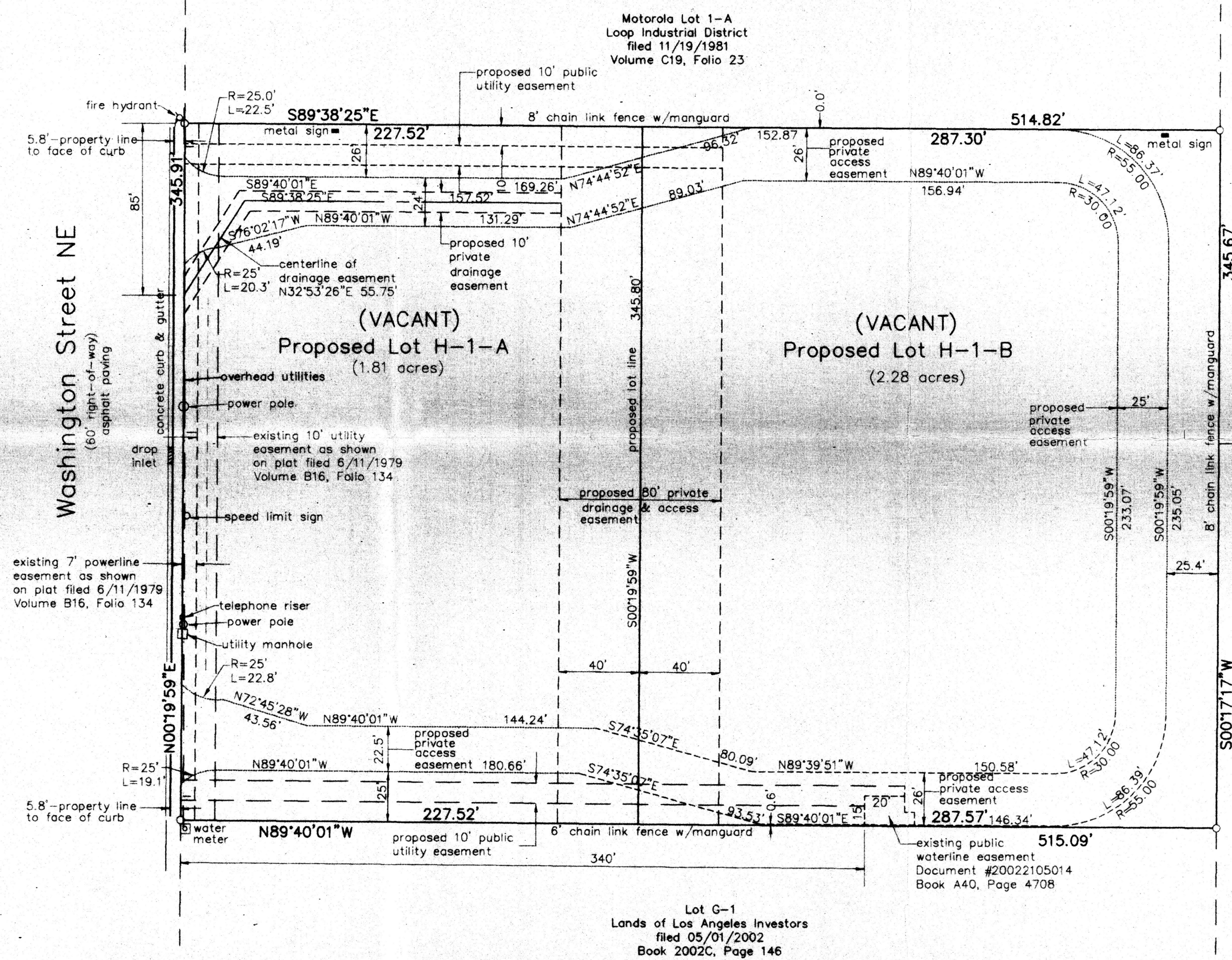
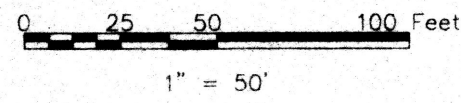
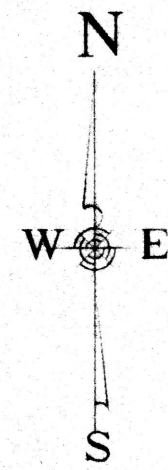


Sketch Plat  
 Proposed Lots H-1-A & H-1-B  
 Lands of Los Angeles Investors  
 Being a Replat of  
 Lot H-1  
 Lands of Los Angeles Investors  
 within  
 Section 14, T.11N., R.3E., N.M.P.M.  
 Albuquerque, Bernalillo County, New Mexico  
 December 2004

The purpose of this plat is to subdivide Lot H-1 into 2 lots,  
 and grant the easements shown hereon.



Forstbauer Surveying, L.L.C.  
 4116 Lomas Boulevard NE  
 Albuquerque, New Mexico 87110  
 (505) 268-2112 Fax 268-2032

1003814