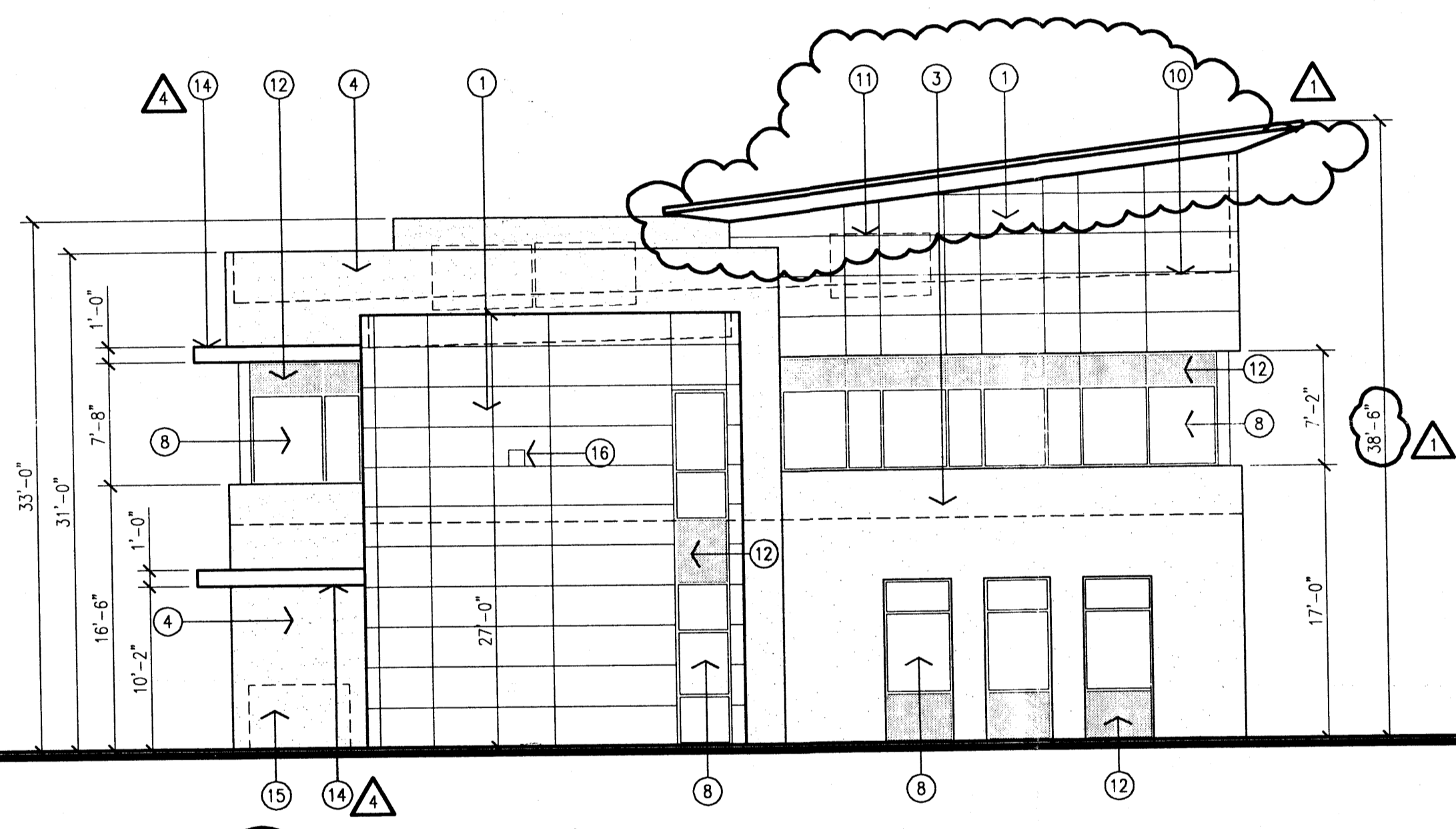
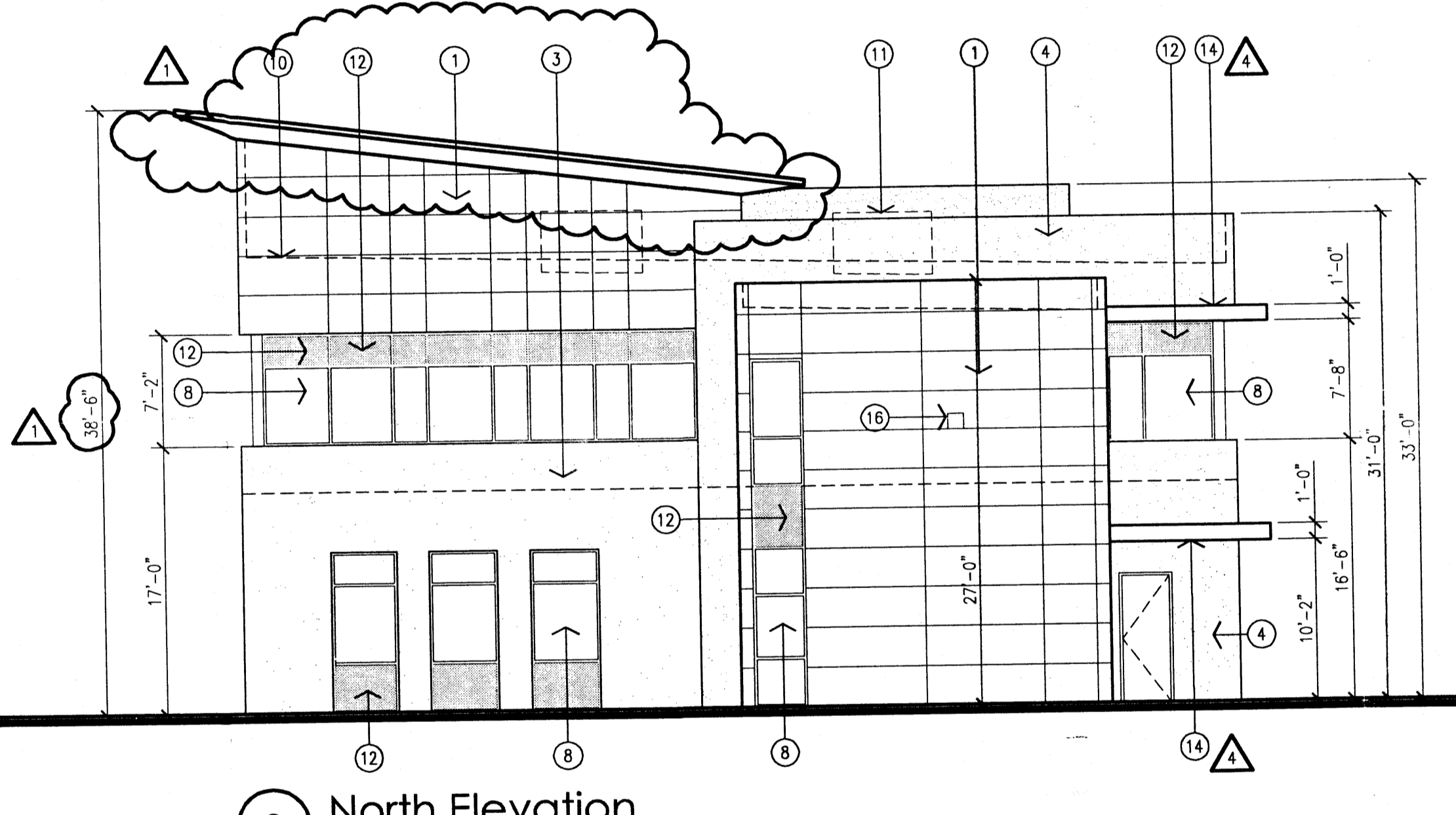


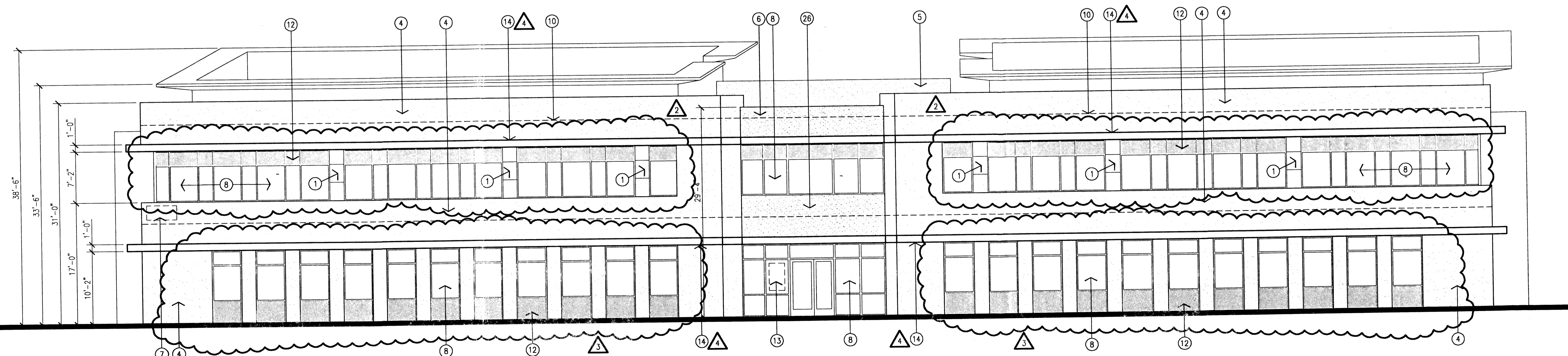
1 East Elevation  
Scale: 1/8" = 1'-0"



2 South Elevation  
Scale: 1/8" = 1'-0"



3 North Elevation  
Scale: 1/8" = 1'-0"



4 West Elevation  
Scale: 1/8" = 1'-0"

- GENERAL NOTES:
- A. ALUMINUM PANEL SYSTEM TO BE OMEGA-LITE PANELS AND OMEGA-FLEX (AT CURVED WALL ABOVE THE ROOF) AS MANUFACTURED BY LAMINATORS INC. JOINTS TO BE 1 PIECE "TIGHT-FIT" MOLDING. JOINTS TO BE 30° VERTICALLY AND HORIZONTALLY AS SHOWN ON THE DRAWINGS. COLOR TO BE STOCKED PREMIUM "CHAMPAGNE METALLIC", SMOOTH FINISH. CONTRACTOR AND PANEL MANUFACTURER TO WORK WITH ARCHITECT DURING THE SUBMITTAL PHASE TO ENSURE THAT THE INSTALLATION IS COMPLETE - INCLUDING ALL TRIM PIECES: PARAPET CAPS, JOINT COVERS, TERMINATION TRIM, ETC.
  - B. ALUMINUM STOREFRONT TO BE BY KAWNEER, TRIFAB 451 CENTER PLANE. COLOR TO BE SELECTED BY ARCHITECT FROM KAWNEER STANDARD ACROFLUR COLORS. SYSTEM TO BE COMPLETE, INCLUDING TRANSOM PANELS, BREAK METAL ENCLOSURES, ETC.
  - C. EXTERIOR GLAZING TO BE PPG SOLARCOOL (2) AZURIA FLOAT GLASS.
  - D. STUCCO TO BE 2-COAT SYSTEM WITH ELASTOMERIC FINISH. COLORS TO BE SELECTED BY ARCHITECT FROM FULL RANGE OF COLORS.
  - E. STONE VENEER TO BE 12" X 12", COLOR TO BE SELECTED BY ARCHITECT.
  - F. CONTRACTOR TO WORK WITH ARCHITECT DURING THE SUBMITTAL PHASE TO ENSURE THAT THE STOREFRONT OPENINGS COURSE OUT WITHIN THE CHOSEN ALUMINUM PANEL JOINT SYSTEM AND COURSE OUT WITH THE JOINTS IN THE STONE VENEER WALLS.
  - G. THE ALUMINUM PANELS STOP AT THE FINISH FLOOR ELEVATION. THE EXPOSED CONCRETE STEM WALL SHALL BE RUBBED TO ENSURE A SMOOTH FINISH.
- KEYED NOTES
- [1] ALUMINUM PANELS SYSTEM.
  - [2] STUCCO VENEER.
  - [3] STUCCO COLOR 1.
  - [4] STUCCO COLOR 2.
  - [5] STUCCO COLOR 3.
  - [6] STUCCO COLOR 4.
  - [7] 12" HIGH PREMISE ID.
  - [8] GLAZING AS SCHEDULED.
  - [9] VESTIBULE ROOF WITH ALUMINUM PANEL SYSTEM FINISH.
  - [10] LINE OF ROOF DECK BEYOND.
  - [11] LINE OF ROOF TOP UNITS BEYOND.
  - [12] SPANDREL PANEL.
  - [13] SANDBLASTED FIRM NAME AND ADDRESS.
  - [14] SUN SHADE WITH ALUMINUM PANEL SYSTEM.
  - [15] GAS METER LOCATION.
  - [16] WALL PACK. REFER TO ELECTRICAL.

- ADMINISTRATIVE AMENDMENT REVISIONS
- [1] THE PROFILE OF THE SLANTED ROOF HAS CHANGED AND BEEN RAISED BY 6" TO ENSURE THAT THE ROOFTOP UNITS ARE COMPLETELY HIDDEN.
  - [2] THE GLASS ON THE SECOND STOREY EAST AND WEST ELEVATIONS HAS BEEN SUBSTANTIALLY DECREASED TO REDUCE THE HEAT GAIN ON THE BUILDING, AND THEREFORE REDUCE ENERGY COSTS.
  - [3] THE WIDTH OF THE FIRST FLOOR WINDOWS ON THE EAST AND WEST ELEVATIONS HAVE BEEN DECREASED, HOWEVER THE NUMBER OF THESE WINDOWS INCREASED. THE AREA OF GLASS ON THE FIRST FLOOR REMAINED THE SAME.
  - [4] OVERHANGS HAVE BEEN ADDED ON THE WEST ELEVATION TO ALSO REDUCE THE HEAT GAIN ON THE BUILDING. THE OVERHANGS WILL BE CONSTRUCTED OF THE SAME MATERIAL AS THE METAL PANELS ON THE BUILDING.

DRB ADMINISTRATIVE  
SITE PLAN AMENDMENT  
PROJECT NO. 1003883  
APPLICATION NO. 20-51773  
DATE 1/15/10

PROJECT # 1003883 (AA)

Mullen Heller  
Architecture P.C.  
1015 Tijeras Avenue NW  
Suite 220  
Albuquerque 87102  
505 268 4144 [p]  
505 268 4244 [f]

job number	04-38
drawn by	MAG
project manager	MMM
date	12/13/05

project title  
Bettinger Office Building 3  
7421 Jefferson  
Albuquerque, New Mexico

sheet title  
Office Building 3 Exterior Elevations