

LEGAL DESCRIPTION

An Easement situate within Section 24, Township 10 North, Range 3 East, New Mexico Principal Meridian, City of Albuquerque, Bernalillo County, New Mexico within Tract 3-A-1, Tijeras Place Improvement Company, Inc. as the same is shown and designated on the plat thereof filed in the office of the County Clerk of Bernalillo County, New Mexico on March 6, 2006 in Plat Book 2006C, Page 67; Tract 4-A, Tijeras Place Improvement Company, Inc. as the same is shown and designated on the plat thereof filed in the office of the County Clerk of Bernalillo County, New Mexico on September 14, 1996 in Volume 95C, Folio 345 and Tract 8, Tijeras Place Improvement Company, Inc. as the same is shown and designated on the plat thereof filed in the office of the County Clerk of Bernalillo County, New Mexico on June 24, 2005 in Plat Book 2005C, Page 217 more particularly described as follows:

An Easement Twenty (20') feet in width, being Ten (10') feet on each side of the following described centerline:

BEGINNING at a point on the Westerly line of said Tract 3-A-1 whence the Northwest corner of said Tract 3-A-1 (a 5/8" rebar and cap stamped "L.S. 9750" found in place) bears N 00°11'49"E, 12.70 feet distant; Thence running as a centerline:

S 81°46'46"E, 13.96 feet to a point; Thence,

S 69°50'59" E, 70.50 feet to a point on the Easterly line of said Tract 3-A-1 and a point on the Westerly line of said Tract 4-A, Tijeras Place Improvement Company, Inc.; Thence,

S 69°50'59" E, 21.11 feet to a point; Thence,

S 82°21'03" E, 181.56 feet to a point on the Easterly line of said Tract 4-A and a point on the Westerly line of said Tract 8, Tijeras Place Improvement Company, Inc.; Thence,

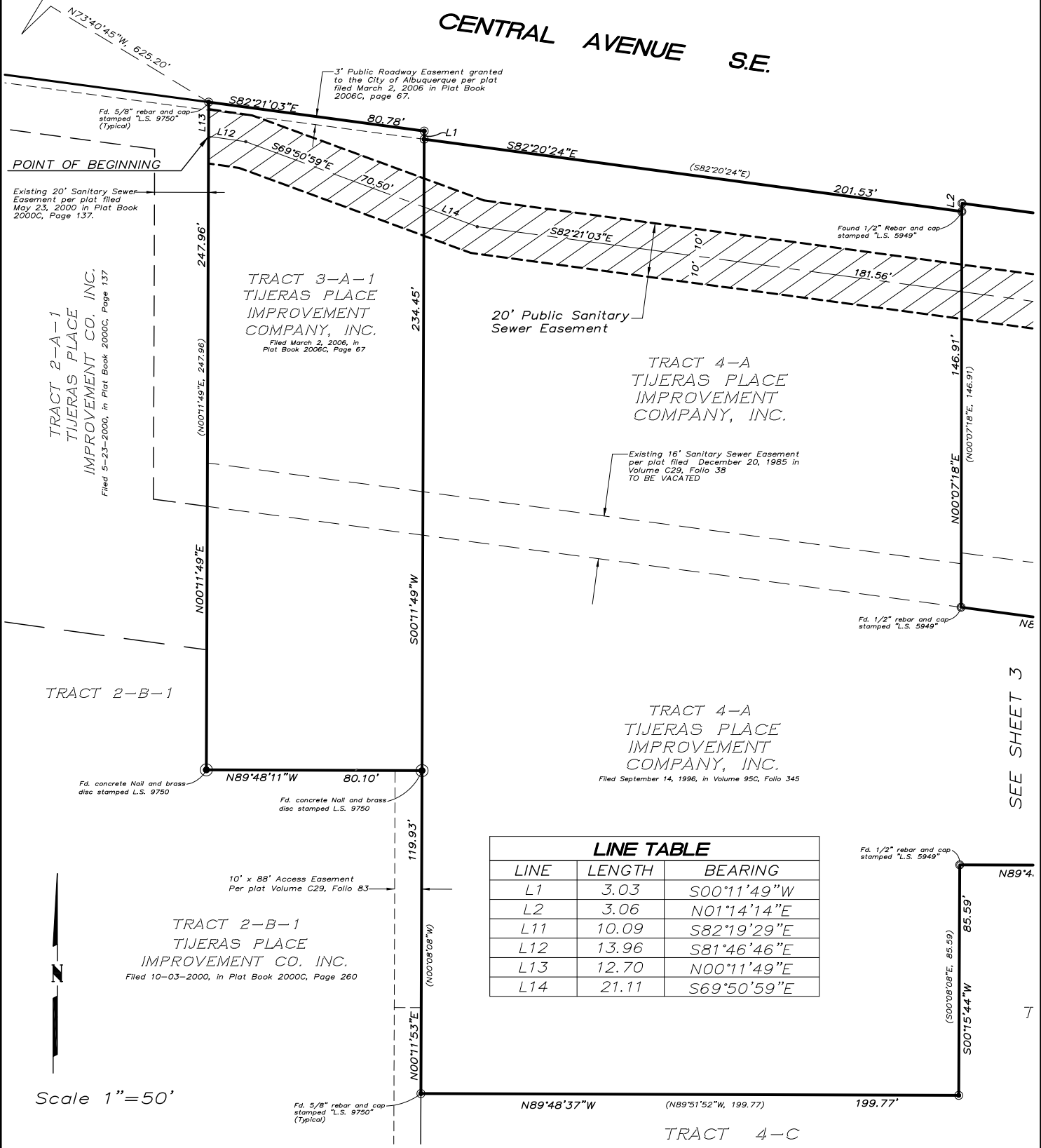
S 82°21'03" E, 237.67 feet to a point; Thence,

S 00°08'40" E, 117.21 feet to a point on the Southerly line of said Tract 8, Tijeras Place Improvement Company, Inc. and the terminus of the centerline herein described.



Albuquerque Control Station Monument "5-K18A"
 New Mexico State Plane Coordinates
 Central Zone (NAD 83)
 N = 1,483,619.713
 E = 1,541,268.242
 Elevation = 5280.174 (NAVD 1988)
 Delta Alpha = -00°11'25.60"
 Ground to Grid Factor = 0.999662582

CENTRAL AVENUE S.E.



LINE TABLE

LINE	LENGTH	BEARING
L1	3.03	S00°11'49"W
L2	3.06	N01°14'14"E
L11	10.09	S82°19'29"E
L12	13.96	S81°46'46"E
L13	12.70	N00°11'49"E
L14	21.11	S69°50'59"E

Scale 1"=50'

SEE SHEET 3

SURV  TEK, INC.

CENTRAL AVENUE S.E.

SAN PEDRO DRIVE S.E.
(VARIABLE WIDTH R/W)

