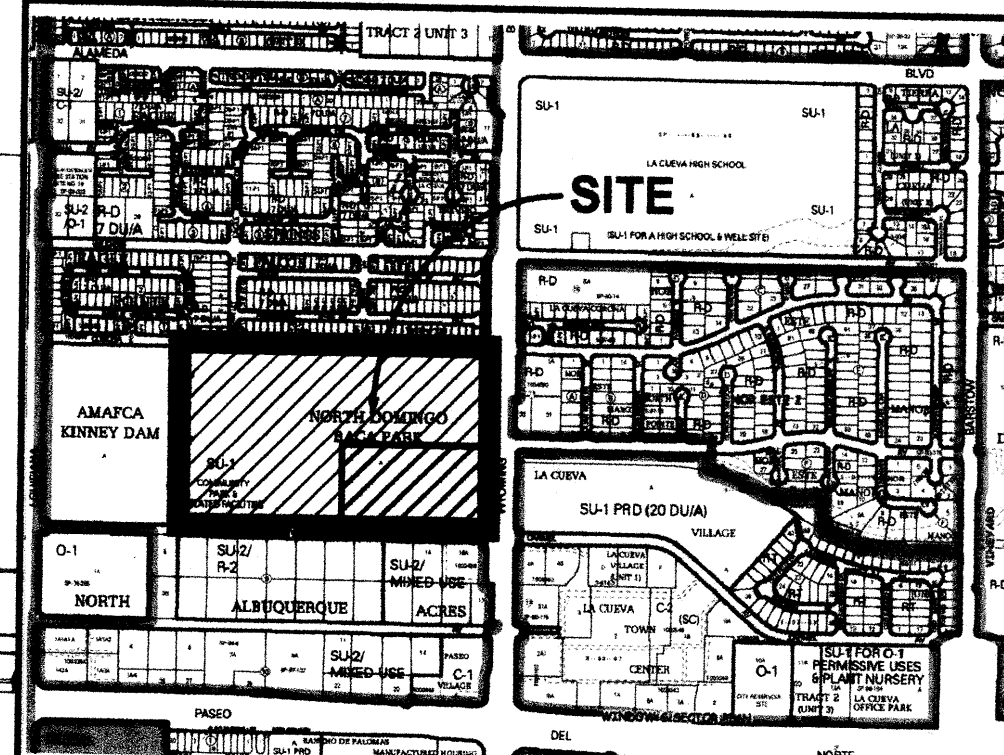


PROJECT DESIGN DATA

LEGAL DESCRIPTION: TRACT A, NORTH DOMINGO BACA PARK
 ZONING: SU-1

VICINITY MAP ZONE ATLAS C-19



SHEET KEYNOTES

1. EXISTING PROPERTY LINE.
2. EXISTING RIGHT OF WAY.
3. EXISTING PARKING SETBACK FROM RIGHT OF WAY.
4. EXISTING BUILDING SETBACK FROM RIGHT OF WAY.
5. PROPOSED BUILDING AND PARKING SETBACK FROM RIGHT-OF-WAY. (5'-0")
6. FUTURE CONCRETE SIDEWALK.
7. NEW ASPHALT BIKEWAY PATH.

UD PLANS CHECKING OFFICE
 824-3611
APPROVED/DISAPPROVED
 HYDRANT(S) ONLY
Brian Bar 3/31/09
 SIGNATURE & DATE

UD PLANS CHECKING OFFICE
 824-3611
APPROVED/DISAPPROVED
 HYDRANT(S) ONLY
 SIGNATURE & DATE

PROJECT NUMBER: 1003921
Application Number: 08 EPC-40097

CADEB-70090
 This plan is consistent with the specific Site Development Plan approved by the Environmental Planning Commission (EPC), dated October 16, 2008 and the Findings and Conditions in the Official Notification of Decision are satisfied.

Is an Infrastructure List required? (X) Yes () No If yes, then a set of approved DRC plans with a work order is required for any construction within the Public Right-of-Way or for construction of public improvements.

DRB SITE DEVELOPMENT SIGNOFF APPROVAL:
[Signature] 04-17-09
 DATE

TRAFFIC ENGINEERING, TRANSPORTATION DIVISION
[Signature] 4-1-09
 DATE

ABCWJA
[Signature] 4/1/09
 DATE

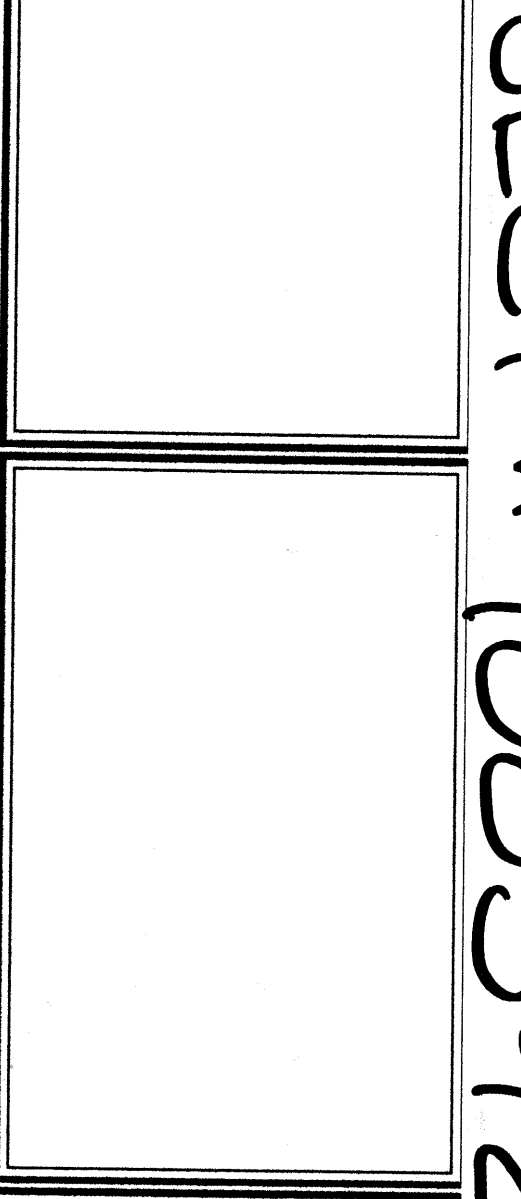
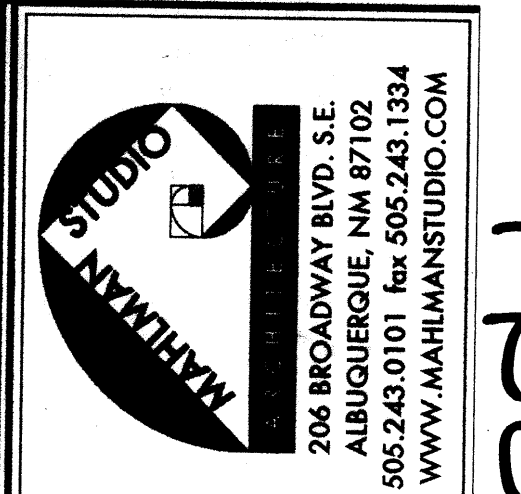
Christina Sandoval 4/1/09
 PARKS AND RECREATION DEPARTMENT
 DATE

Anto A. Chera 4-1-09
 CITY ENGINEER
 DATE

N/A
 ENVIRONMENTAL HEALTH DEPARTMENT (conditional) DATE

[Signature] 3-31-09
 SOLID WASTE MANAGEMENT DATE

[Signature] 4-17-09
 DRB CHAIRPERSON, PLANNING DEPARTMENT DATE



REVISIONS	DESCRIPTION
04/01/09	DRB REVISIONS
02/02/09	DRB REVISIONS
09/26/08	EPC REVISIONS
09/11/08	EPC REVISIONS
	MARK
	MMDDYY
	DESCRIPTION

PROJECT NO.	FILE NAME
DRAWN BY:	CHECKED BY:
COPYRIGHT:	OTHER:

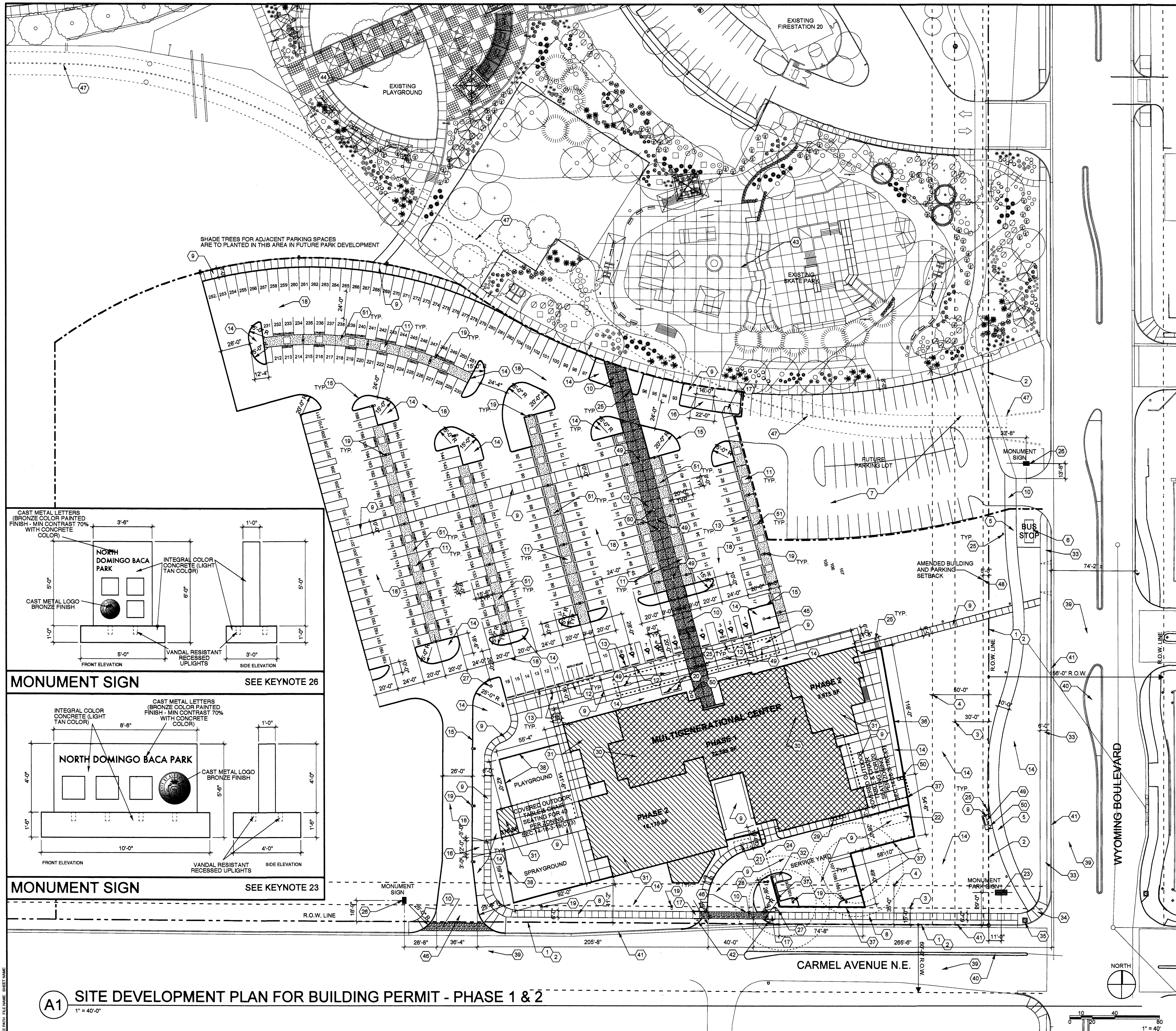
SHEET TITLE:

PARTIAL SITE DEVELOPMENT PLAN FOR AMENDMENT

A-101

A1 PARTIAL SITE DEVELOPMENT PLAN FOR AMENDMENT
 1" = 40'-0"

PROJECT # 1003921



PROJECT DESIGN DATA

LEGAL DESCRIPTION: TRACT A, NORTH DOMINGO BACA PARK
ZONING: SU-1 **OCCUPANCY TYPE:** A-3 **CONSTRUCTION TYPE:** TYPE IIB

PHASE 1
 BUILDING AREA = 22,585 SF TOTAL PHASE 1 - (18,410 SF FIRST FLOOR + 4,175 SF SECOND FLOOR)

PARKING SPACES CALCULATIONS
 REQUIRED: 22,585 SF / 200 = 113 SPACES (-10% PUBLIC TRANSIT ROUTE REDUCTION) = 102 PARKING SPACES REQUIRED (INCL. 8 HANDICAPPED SPACES) PROVIDED: 110 PARKING SPACES (INCL. 9 HANDICAPPED SPACES)

BICYCLE SPACES CALCULATIONS
 REQUIRED: 1 PER 20 PARKING SPACES = 102 SPACES / 20 = 5 BICYCLES PROVIDED: (2) 7 LOOP RACKS = 14 BICYCLES

MOTORCYCLE SPACES CALCULATIONS
 REQUIRED: BETWEEN 101 TO 150 PARKING SPACES = 4 SPACES REQUIRED PROVIDED: 6 MOTORCYCLE SPACES

PHASE 2
 BUILDING AREA = 26,050 SF TOTAL PHASE 2 - (14,775 SF FIRST FLOOR + 11,275 SF SECOND FLOOR)

PARKING SPACES CALCULATIONS
 REQUIRED: 26,050 SF / 200 = 130 SPACES (-10% PUBLIC TRANSIT ROUTE REDUCTION) = 117 SPACES (INCL. 0 HANDICAPPED SPACES AS ALL REQ. HC SPACES ACCOUNTED FOR IN PHASE 1) PROVIDED: 117 SPACES (ALL REQ. HC SPACES PROVIDED IN PHASE 1)

BICYCLE SPACES CALCULATIONS
 REQUIRED: 1 PER 20 PARKING SPACES = 117 SPACES / 20 = 6 BICYCLES PROVIDED: ALL REQ. BICYCLE SPACES PROVIDED IN PHASE 1

MOTORCYCLE SPACES CALCULATIONS
 REQUIRED: BETWEEN 151 TO 300 PARKING SPACES = 5 SPACES REQUIRED PROVIDED: ALL REQ. MOTORCYCLE SPACES PROVIDED IN PHASE 1

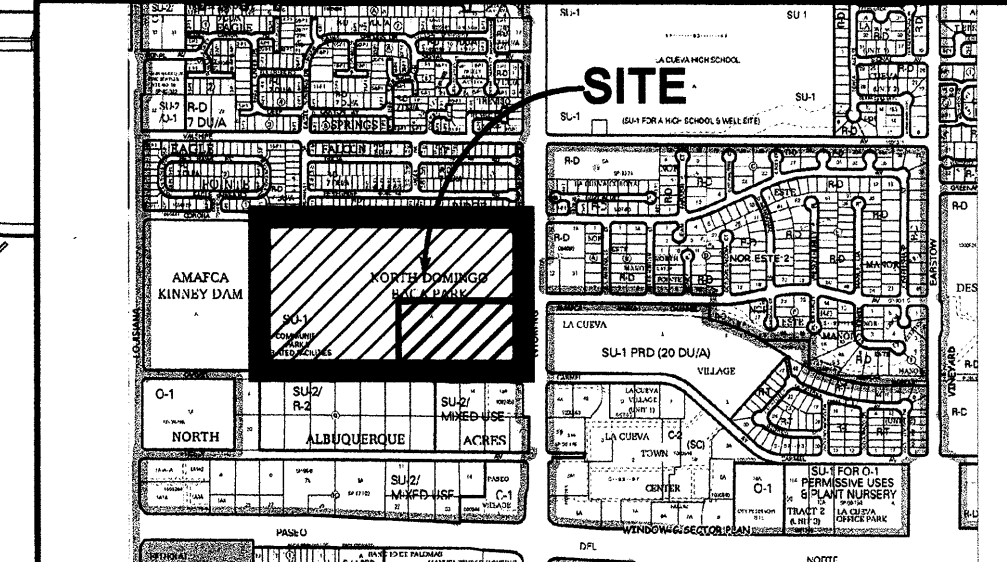
PHASE 1 & 2 SUMMARY
 BUILDING AREA = 48,635 SF TOTAL - (33,185 SF FIRST FLOOR + 15,450 SF SECOND FLOOR)

PARKING SPACES CALCULATIONS
 REQUIRED: 219 SPACES (INCL. 8 HC SPACES) PROVIDED: 282 SPACES (INCL. 9 HC SPACES)

BICYCLE SPACES CALCULATIONS
 REQUIRED: 1 PER 20 PARKING SPACES = 117 SPACES / 20 = 6 BICYCLES PROVIDED: ALL REQ. BICYCLE SPACES PROVIDED IN PHASE 1

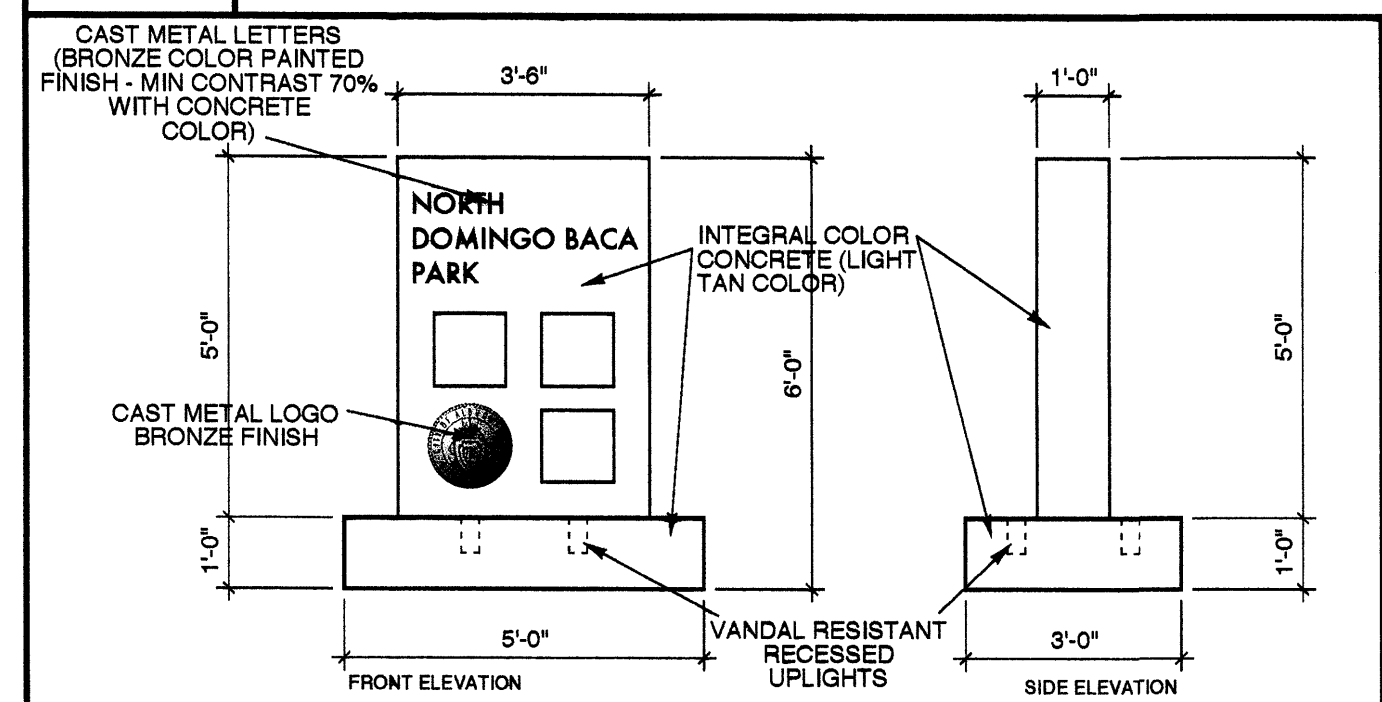
MOTORCYCLE SPACES CALCULATIONS
 REQUIRED: BETWEEN 151 TO 300 PARKING SPACES = 5 SPACES REQUIRED PROVIDED: ALL REQ. MOTORCYCLE SPACES PROVIDED IN PHASE 1

VICINITY MAP **ZONE ATLAS C-19**

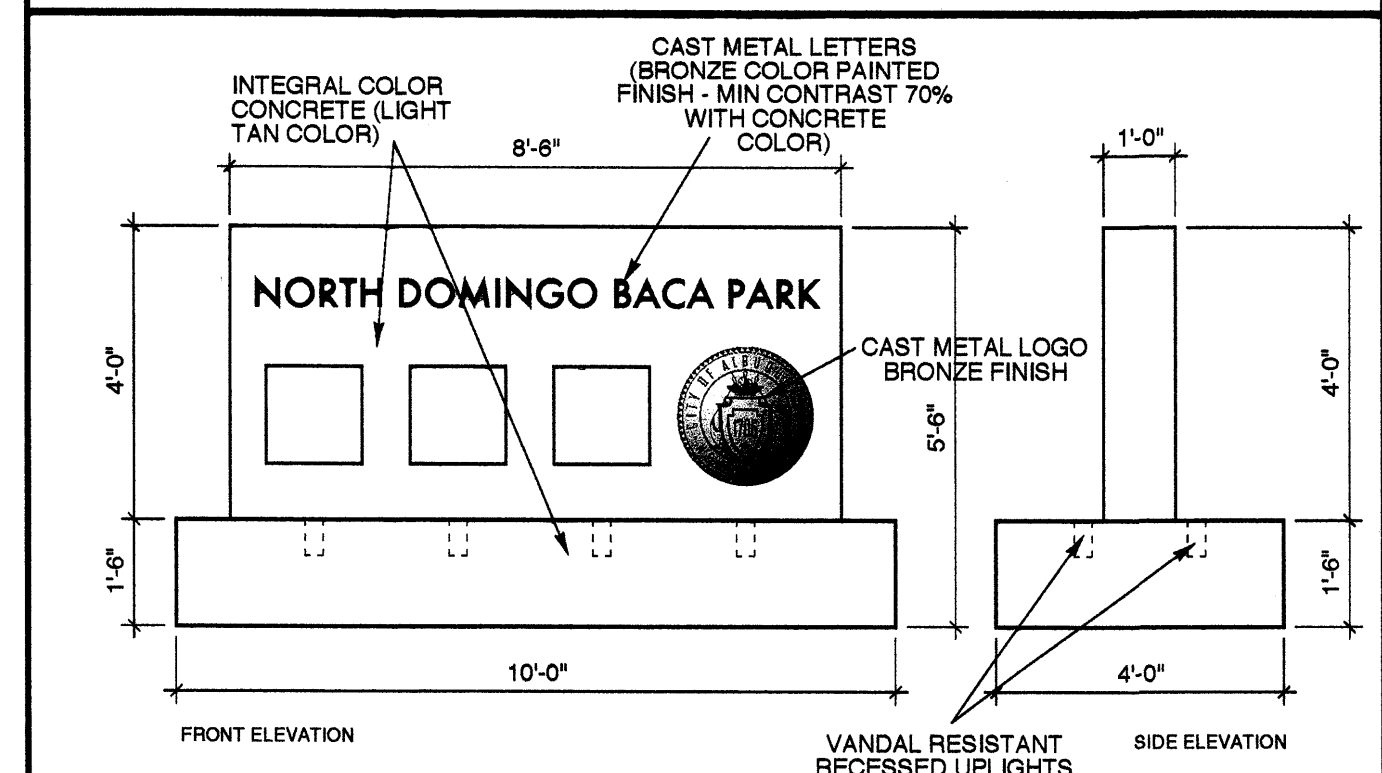


SHEET KEYNOTES

- EXISTING PROPERTY LINE
- EXISTING RIGHT OF WAY
- EXISTING PARKING SETBACK FROM RIGHT OF WAY
- EXISTING BUILDING SETBACK FROM RIGHT OF WAY
- NEW ASPHALT BIKEWAY PATH (TO CONTINUE EXISTING BIKES & TRAILS PARK) OVER EXISTING CONCRETE OVER COMPACTED SUBGRADE. PROPOSED PUBLIC TRANSIT STOP LOCATION (BUS ROUTES 98 & 31)
- FUTURE PARK-N-RIDE PARKING LOT, NOT PART OF THIS PERMIT SUBMITTAL
- NEW CONCRETE SIDEWALK PER CITY OF ALBUQUERQUE STANDARDS
- NEW INTEGRAL COLOR (BAJA RED) CONCRETE SIDEWALK OR PAVING
- PARKING LOT TREE PLANTER - 80" X 60" BLOCK OUT IN "GRASSCRETE PAVING" WITH DECOMPOSED GRANITE
- NEW 48" HIGH POLE MOUNTED HANDICAPPED OR MOTORCYCLE PARKING SIGNS (1 PER SPACE)
- NEW PRECAST CONCRETE PARKING BUMPER
- NEW HANDICAPPED AREA
- STAND-UP CONCRETE CURB PER CITY OF ALBUQUERQUE DESIGN STANDARDS. GUTTER TO BE PROVIDED WHERE REQUIRED FOR DRAINAGE
- NEW DRIVEPAD FOR MAINTENANCE VEHICLE ACCESS
- NEW HANDICAPPED ACCESSIBLE SIDEWALK RAMP PER CITY OF ALBUQUERQUE DESIGN STANDARDS
- NEW ASPHALT PAVING
- NEW HIGH PRESSURE MOUNTED HIGH PRESSURE SODIUM PARKING LIGHT FIXTURE ON 2" DIA. CONCRETE BASE. FIXTURE TO BE EQUAL TO LUMARK "TR" TO MATCH EXISTING POLE LIGHTS LOCATED THROUGHOUT PARK DEVELOPMENT. SINGLE OR DOUBLE FLAT CUT-OFF HEAD AS SHOWN. SEE DETAIL ON SHEET A-103
- NEW LOOP BICYCLE RACK (7 BIKES EA.) RACKS TO BE EQUAL TO DUMOR LOOP BIKE RACK TO MATCH OTHER BICYCLE RACKS LOCATED THROUGHOUT THE PARK DEVELOPMENT. SEE DETAIL ON SHEET A-103
- UNDERGROUND SANITARY SEWER DRAIN TO BE PROVIDED IN SLAB. INTEGRAL COLOR CMU SERVICE YARD WALL AT COMPACTOR LOCATION TO BE 8'-0" ABOVE DUMPSTER SLAB
- SELF-CONTAINED SOLID WASTE COMPACTOR (34 CY.) BOLLARDS (18) TO PROTECT SERVICE YARD WALLS. SANITARY SEWER DRAIN TO BE PROVIDED IN SLAB. INTEGRAL COLOR CMU SERVICE YARD WALL AT COMPACTOR LOCATION TO BE 8'-0" ABOVE DUMPSTER SLAB
- MONUMENT PARK SIGN TO BE NO GREATER THAN 50 SF PER FACE AND MAX. 8 FT. IN HEIGHT. SIGN MATERIALS TO REFLECT MATERIALS USED IN PARK FACILITIES. SEE DETAIL SHEET A-102
- AUTOMATED METAL SERVICE DRIVE ACCESS GATE. METAL COLOR TO BE RUSTED REDDISH BROWN
- 18" X 24" HIGH CONCRETE LIGHTED PEDESTRIAN BOLLARD. SEE DETAIL SHEET A-103
- MONUMENT ENTRY SIGN TO BE NO GREATER THAN 24 SF PER FACE AND MAX. 8 FT. IN HEIGHT. SIGN MATERIALS TO REFLECT MATERIALS USED IN PARK FACILITIES. SEE DETAIL SHEET A-102
- NEW FIRE HYDRANT
- NEW FIRE DEPARTMENT SIEMENS CONNECTION ON PEDESTAL
- PROPOSED LOCATION FOR RECYCLING BINS
- NEW PHASE 1 MULTIGENERATIONAL CENTER CONSTRUCTION
- NEW PHASE 2 MULTIGENERATIONAL CENTER CONSTRUCTION
- NEW ELECTRICAL TRANSFORMER AND PAD
- EXISTING CONCRETE SIDEWALK OR PAVING OR PAVING
- EXISTING CONCRETE ADA SIDEWALK RAMP
- EXISTING TRAFFIC SIGNAL
- CMU RETAINING WALL WITH METAL GUARDRAIL ON TOP. TOP OF GUARDRAIL TO BE 11'-6" A.F.F. AND HIGHEST ADJACENT GRADE. CMU COLOR TO BE STACKED MULTI-COLOR EARTHSTONE MIX. GUARDRAIL COLOR TO BE RUSTED REDDISH BROWN
- CMU RETAINING WALL WITH METAL GUARDRAIL ON TOP. TOP OF WALL TO BE 8'-0" A.F.F. ELEVATION ON THE SERVICE YARD SIDE AND VARIED HEIGHT ABOVE SLOPING ADJACENT GRADE ON THE EXTERIOR SIDE BUT NO POINT LESS THAN 42" ABOVE HIGHEST ADJACENT GRADE. CMU COLOR TO BE STACKED MULTI-COLOR EARTHSTONE MIX. GUARDRAIL COLOR TO BE RUSTED REDDISH BROWN
- CMU RETAINING WALL WITH CMU POST AND STEEL FENCE. TOP OF FENCE TO BE 6'-0" A.F.F. CMU POSTS TO BE 20'-0" O.C. MAX. CMU TO BE MULTI-COLOR EARTHSTONE MIX. STEEL COLOR TO BE RUSTED REDDISH BROWN
- EXISTING ASPHALT PAVED STREET
- EXISTING CONCRETE MEDIAN CURB
- EXISTING CONCRETE CURB AND GUTTER
- 84" POLE MOUNTED REFLECTED GRAPHIC TRAFFIC SIGN TO READ "SERVICE VEHICLES ONLY"
- EXISTING SKATE PARK
- EXISTING PARK PLAY AREA
- NEW 30' INTERVAL HALYARD FLAGPOLE
- NEW CURB CUT AND DRIVE PAD ENTRANCE PER CITY OF ALBUQUERQUE DESIGN STANDARDS. RIGHT-IN / RIGHT-OUT ONLY
- EXISTING CONCRETE BOX CULVERT SHOWN DASHED
- PROPOSED BUILDING AND PARKING SETBACK FROM RIGHT-OF-WAY. (5'-0")
- 72" X 18" PRECAST INTEGRAL COLOR CONCRETE BENCH. COLOR TO BE TAN. SEE DETAIL ON SHEET A-103
- 31 GAL. CONCRETE WASTE AND RECYCLE CONTAINER WITH ALUMINUM TOP AND LINER. SEE DETAIL SHEET A-103
- "GRASSCRETE" CONCRETE PAVING / SIDEWALK WITH DECOMPOSED GRANITE INFILL TO PROVIDE ADDITIONAL WATER HARVESTING CAPACITY AT PARKING LOT TREE ROOTING LOCATIONS

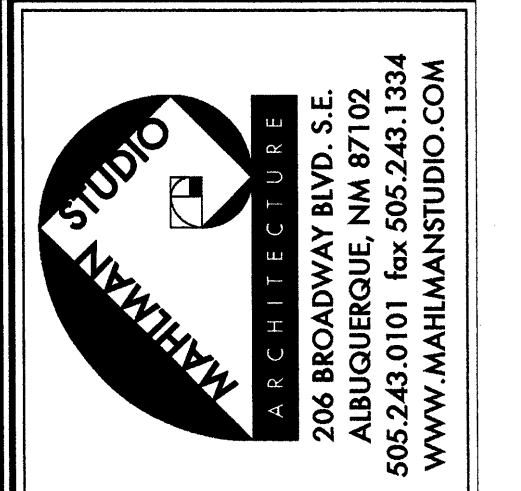


MONUMENT SIGN SEE KEYNOTE 26



MONUMENT SIGN SEE KEYNOTE 23

A1 SITE DEVELOPMENT PLAN FOR BUILDING PERMIT - PHASE 1 & 2
 1" = 40'-0"



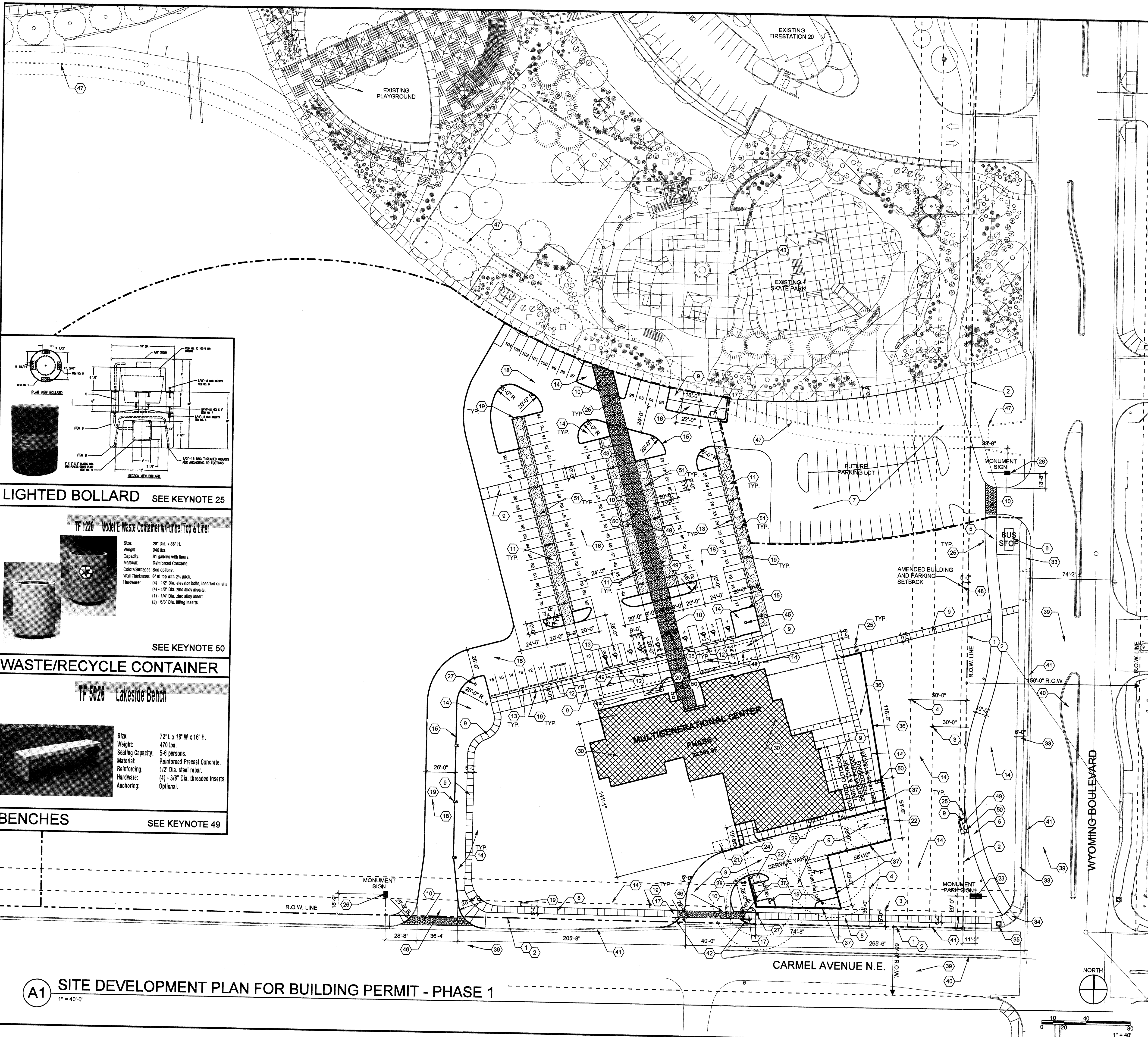
NORTH DOMINGO BACA MULTIGENERATIONAL CENTER
 CITY OF ALBUQUERQUE
 WYOMING BLVD. & CARMEL AVE. NE
 ALBUQUERQUE, NM
 AUGUST 2008

NO.	DATE	DESCRIPTION	MARK
1	04/01/08	DRB REVISIONS	
2	02/20/09	DRB REVISIONS	
3	09/20/08	EPC REVISIONS	
4	09/11/08	EPC REVISIONS	
5		MMDDYY	

PROJECT NO:
 FILE NAME:
 DRAWN BY:
 CHECKED BY:
 COPYRIGHT:
 OTHER:

SHEET TITLE:
SITE DEVELOPMENT PLAN FOR BUILDING PERMIT - PHASE 1 & 2

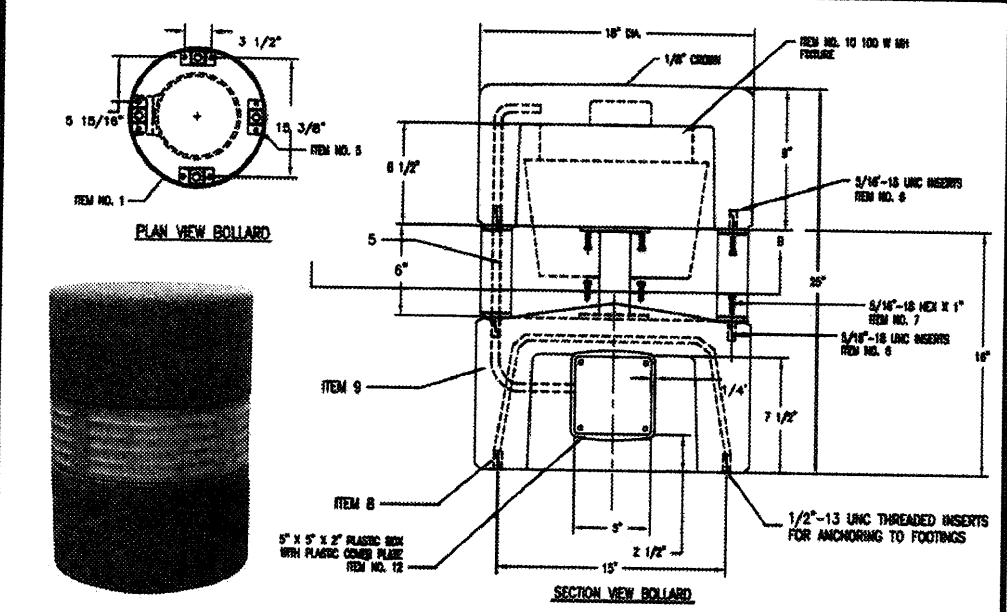
A-102



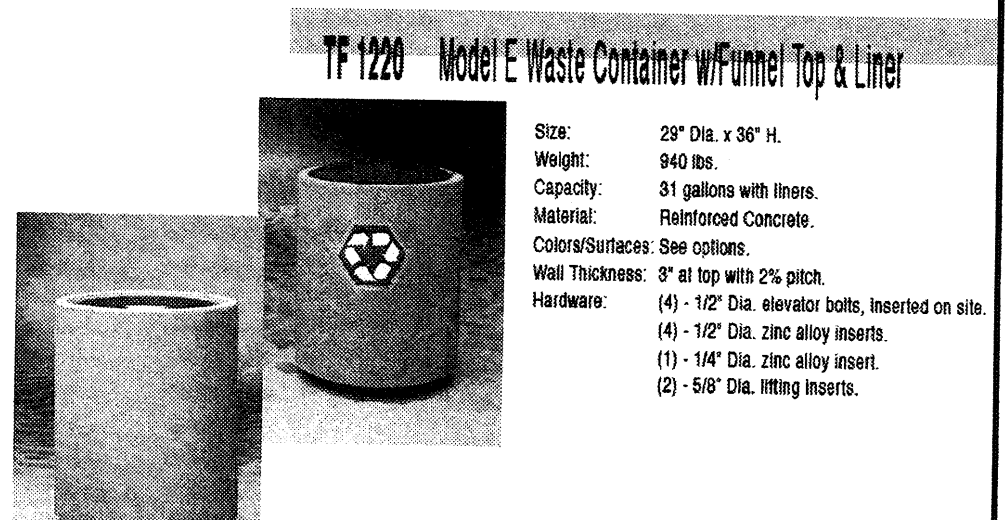
GENERAL SHEET NOTES

SHEET KEYNOTES

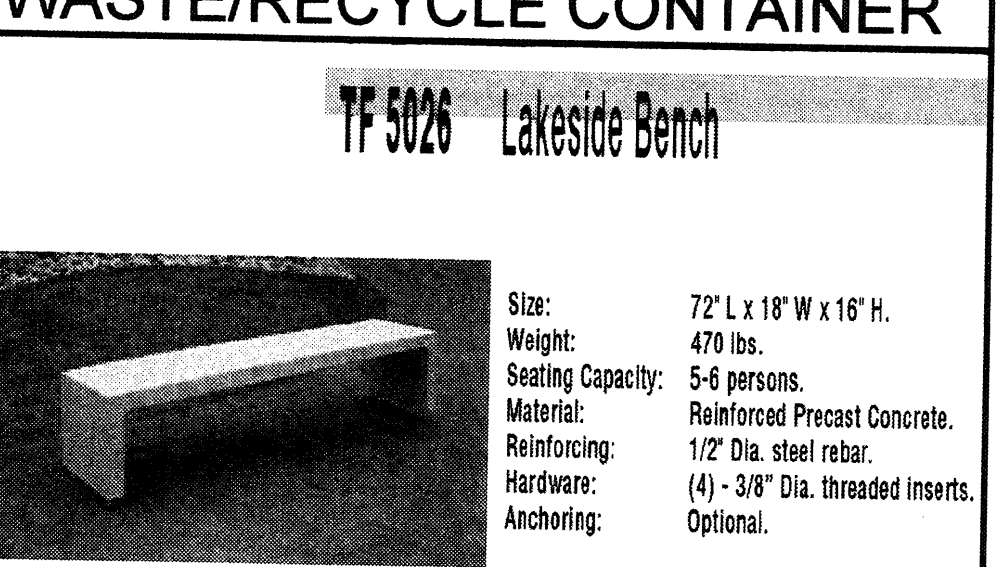
1. EXISTING PROPERTY LINE
2. EXISTING RIGHT OF WAY
3. EXISTING PARKING SETBACK FROM RIGHT OF WAY
4. EXISTING BUILDING SETBACK FROM RIGHT OF WAY
5. NEW ASPHALT BIKEWAY PATH (TO CONTINUE EXISTING BIKES & TRAILS PATH) 2" ASPHALTIC BASE COURSE OVER COMPACTED SUBGRADE
6. PROPOSED PUBLIC TRANSIT STOP LOCATION (BUS ROUTES 98 & 31)
7. FUTURE PARK-N-RIDE PARKING LOT, NOT PART OF THIS PERMIT SUBMITTAL
8. NEW CONCRETE SIDEWALK PER CITY OF ALBUQUERQUE STANDARDS
9. NEW STAINLESS STEEL CONCRETE SIDEWALK OR PAVING
10. NEW INTEGRAL COLOR (BAJA RED) CONCRETE SIDEWALK OR PAVING
11. PARKING LOT TREE PLANTER - 80" X 60" BLOCK OUT IN GRASSCRETE PAVING WITH DECOMPOSED GRANITE
12. NEW 48" HIGH POLE MOUNTED HANDICAPPED OR MOTORCYCLE PARKING SIGNS (1 PER SPACE)
13. NEW PRECAST CONCRETE PARKING BUMPER
14. NEW LANDSCAPED AREA
15. STAINLESS STEEL CONCRETE CURB PER CITY OF ALBUQUERQUE DESIGN STANDARDS. GUTTER TO BE PROVIDED WHERE REQUIRED FOR DRAINAGE
16. NEW DRIVEPAD FOR MAINTENANCE VEHICLE ACCESS
17. NEW HANDICAPPED ACCESSIBLE SIDEWALK RAMP PER CITY OF ALBUQUERQUE DESIGN STANDARDS
18. NEW ASPHALT PAVING
19. NEW 20" HIGH POLE MOUNTED HIGH PRESSURE SODIUM PARKING LOT LIGHT FIXTURE ON 2" DIA. CONCRETE BASE. FIXTURE TO BE EQUAL TO LUMARK "TR" TO MATCH EXISTING POLE LIGHTS LOCATED THROUGHOUT PARK DEVELOPMENT. SINGLE OR DOUBLE FULL CUT-OFF HEAD AS SHOWN. SEE DETAIL ON SHEET A-103.
20. NEW LOOP BICYCLE RACK (7 BIKES EA). RACKS TO BE EQUAL TO DUMOR LOOP BIKE RACK TO MATCH OTHER BICYCLE RACKS LOCATED THROUGHOUT THE PARK DEVELOPMENT. SEE DETAIL ON SHEET A-103.
21. UNDERGROUND ROOFTOP STORMWATER CATCHMENT CISTERN. COLLECTED WATER TO BE UTILIZED FOR SITE IRRIGATION.
22. SELF-CONTAINED SOLID WASTE COMPACTOR (34 CY). BOLLARDS (18) TO PROTECT SERVICE YARD WALLS. SANITARY SEWER DRAIN TO BE PROVIDED IN SLAB. INTEGRAL COLOR CMU SERVICE YARD WALL AT COMPACTOR LOCATION TO BE 8'-0" ABOVE DIMMER SLAB.
23. MONUMENT PARK SIGN TO BE NO GREATER THAN 50 SF PER FACE AND MAX. 6 FT. IN HEIGHT. SIGN MATERIALS TO REFLECT MATERIALS USED IN PARK FACILITIES. SEE DETAIL SHEET A-102.
24. AUTOMATED METAL SERVICE DRIVE ACCESS GATE. METAL COLOR TO BE RUSTED REDDISH BROWN
25. 16" X 25" HIGH CONCRETE LIGHTED PEDESTRIAN BOLLARD (SEE DETAIL SHEET A-101) TO COMPLY WITH DPM REQUIREMENTS
26. MONUMENT ENTRY SIGN TO BE NO GREATER THAN 24 SF PER FACE AND MAX. 6 FT. IN HEIGHT. SIGN MATERIALS TO REFLECT MATERIALS USED IN PARK FACILITIES. SEE DETAIL SHEET A-102
27. NEW FIRE HYDRANT
28. NEW FIRE DEPARTMENT SIAMENSE CONNECTION ON PEDESTAL
29. PROPOSED LOCATION FOR RECYCLING BINS
30. NEW PHASE 1 MULTIGENERATIONAL CENTER CONSTRUCTION
31. NEW PHASE 2 MULTIGENERATIONAL CENTER CONSTRUCTION
32. NEW ELECTRICAL TRANSFORMER AND PAD
33. EXISTING CONCRETE SIDEWALK OR PAVING
34. EXISTING CONCRETE ADA SIDEWALK RAMP
35. EXISTING TRAFFIC SIGNAL
36. CMU RETAINING WALL WITH METAL GUARDRAIL ON TOP. TOP OF GUARDRAIL TO BE 11'-6" A.F.F. AND 42" MIN. ABOVE HIGHEST ADJACENT GRADE. CMU COLOR TO BE STACKED MULTI-COLOR EARTH-TONE MIX. GUARDRAIL COLOR TO BE RUSTED REDDISH BROWN
37. CMU RETAINING / GARDEN WALL. TOP OF WALL TO BE 8'-0" A.F.F. ELEVATION ON THE SERVICE YARD SIDE AND VARIED HEIGHT ABOVE SLOPING ADJACENT GRADE ON THE EXTERIOR SIDE BUT NO POINT LESS THAN 42" ABOVE HIGHEST ADJACENT GRADE. CMU COLOR TO BE STACKED MULTI-COLOR EARTH-TONE MIX.
38. CMU RETAINING WALL WITH CMU POST AND STEEL FENCE. TOP OF FENCE TO BE 8'-0" A.F.F. CMU POSTS TO BE 20'-0" O.C. MAX. CMU TO BE MULTI-COLOR EARTH-TONE MIX. STEEL COLOR TO BE RUSTED REDDISH BROWN.
39. EXISTING ASPHALT PAVED STREET
40. EXISTING CONCRETE MEDIAN CURB
41. EXISTING CONCRETE CURB AND GLUTTER
42. 84" POLE MOUNTED REFLECTED GRAPHIC TRAFFIC SIGN TO READ "SERVICE VEHICLES ONLY"
43. EXISTING SKATE PARK
44. EXISTING PARK PLAY AREA
45. NEW 30" INTERNAL HALYARD FLAGPOLE
46. NEW CURB CUT AND DRIVE PAD ENTRANCE PER CITY OF ALBUQUERQUE DESIGN STANDARDS. RIGHT-IN / RIGHT-OUT ONLY.
47. EXISTING CONCRETE BOX CULVERT SHOWN DASHED.
48. PROPOSED BUILDING AND PARKING SETBACK FROM RIGHT-OF-WAY (5'-0")
49. 72" X 18" PRECAST INTEGRAL COLOR CONCRETE BENCH. COLOR TO BE TAN. SEE DETAIL ON SHEET A-103
50. 31 GAL. CONCRETE WASTE AND RECYCLE CONTAINER WITH ALUMINUM TOP AND LINER. SEE DETAIL SHEET A-103
51. "GRASSCRETE" CONCRETE PAVING / SIDEWALK WITH DECOMPOSED GRANITE INFILL TO PROVIDE ADDITIONAL WATER HARVESTING CAPACITY AT PARKING LOT TREE ROOTING LOCATIONS.



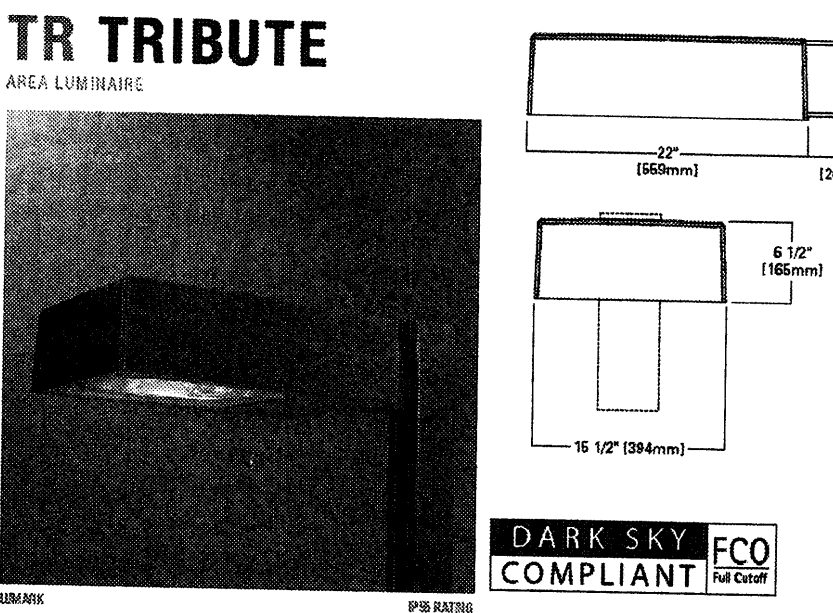
LIGHTED BOLLARD SEE KEYNOTE 25



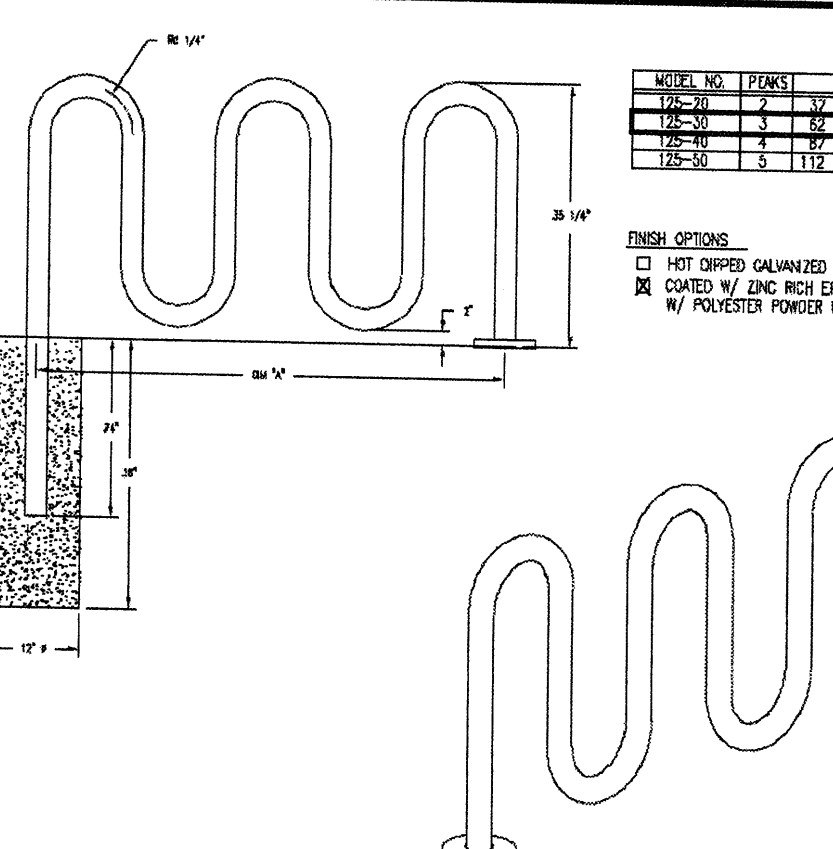
WASTE/RECYCLE CONTAINER SEE KEYNOTE 50



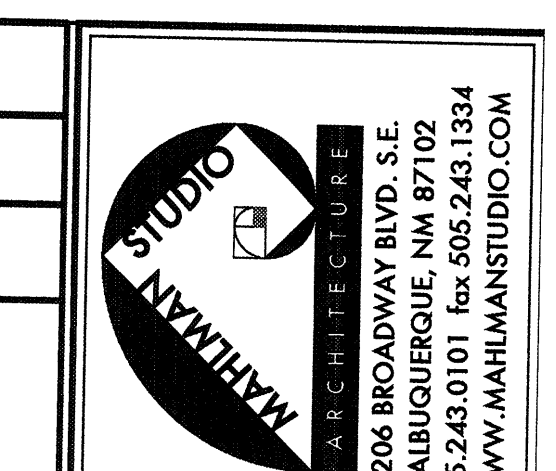
BENCHES SEE KEYNOTE 49



POLE LIGHTS SEE KEYNOTE 19



BIKE RACK SEE KEYNOTE 20



**NORTH DOMINGO BACA
MULTIGENERATIONAL CENTER**

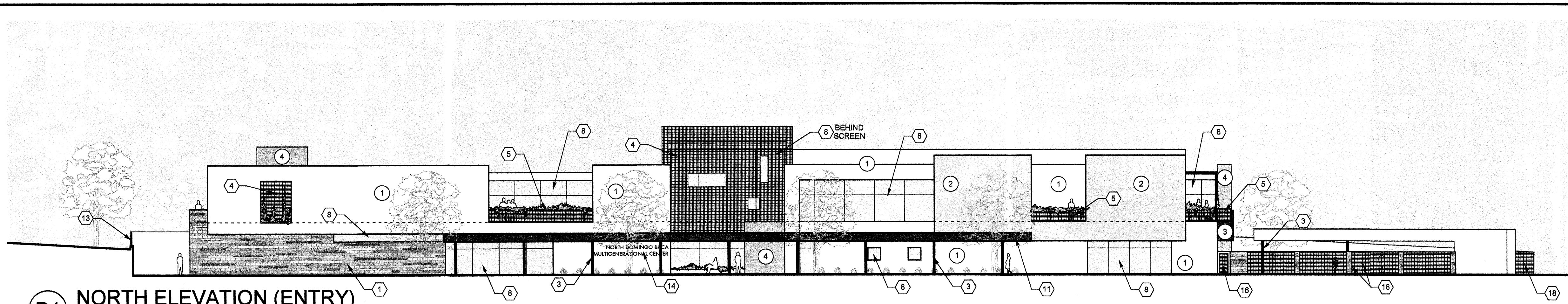
CITY OF ALBUQUERQUE
WYOMING BLVD. & CARMEL AVE. NE
ALBUQUERQUE, NM
AUGUST 2008

DATE	REVISIONS	DESCRIPTION
04/07/08	DRB REVISIONS	
02/02/08	DRB REVISIONS	
09/26/08	EPC REVISIONS	
08/11/08	EPC REVISIONS	
	MM/DD/YY	DESCRIPTION

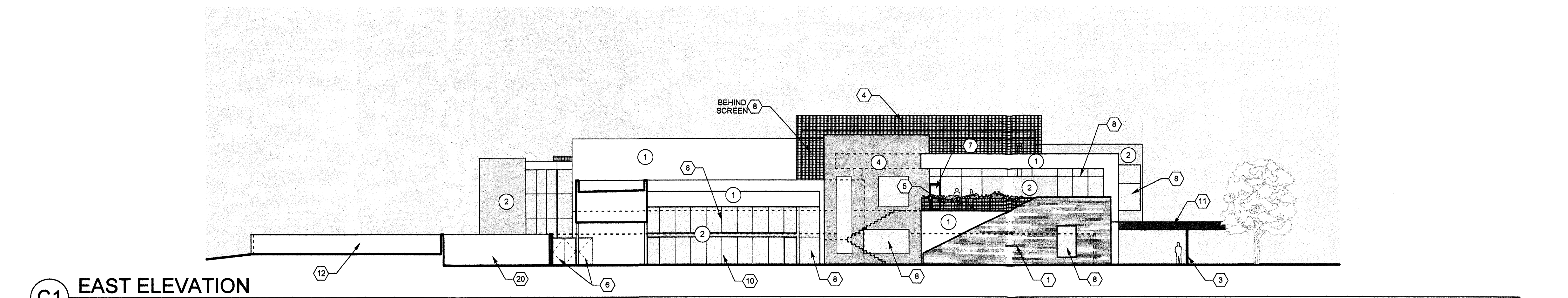
PROJECT NO:
FILE NAME:
DRAWN BY:
CHECKED BY:
COPYRIGHT:
OTHER:

SHEET TITLE:
SITE DEVELOPMENT PLAN FOR BUILDING PERMIT - PHASE 1

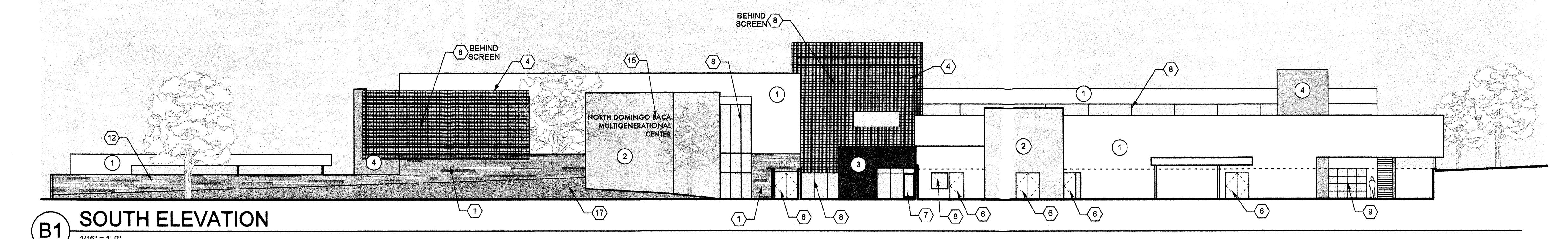
A-103



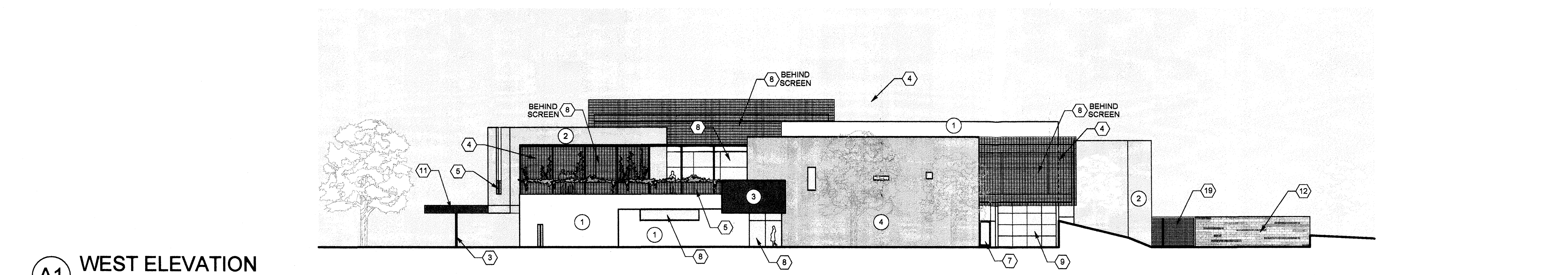
D1 NORTH ELEVATION (ENTRY)
1/16" = 1'-0"



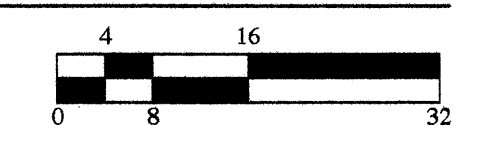
C1 EAST ELEVATION
1/16" = 1'-0"



B1 SOUTH ELEVATION
1/16" = 1'-0"



A1 WEST ELEVATION
1/16" = 1'-0"

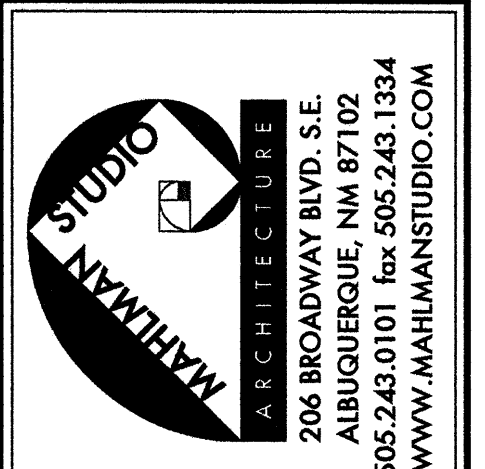


GENERAL SHEET NOTES

1. ALL EXTERIOR MATERIALS ARE TO HAVE A LOW LEVEL OF REFLECTANCE TO FULFILL THE DESIGN STANDARDS OF THE NDBP MASTER DEVELOPMENT PLAN.

SHEET KEYNOTES

1. INTEGRAL COLOR CMU. CMU COLOR TO BE STACKED MULTI-COLOR EARTHTONE TAN MIX.
2. THREE-COAT STUCCO FINISH SYSTEM WITH ACRYLIC COLOR COAT. COLORS TO BE AS FOLLOWS:
 - ① WHITE
 - ② WARM TONE TAN
 - ③ RUSTED REDDISH BROWN
 - ④ GOLDEN OCHRE
3. PAINTED STEEL COLUMN. PANT COLOR TO BE RUSTED REDDISH BROWN.
4. PAINTED METAL MESH SOLAR SCREEN MOUNTED ON ANGLE FRAME SUPPORT. SCREEN AND FRAME TO BE PAINTED RUSTED REDDISH BROWN.
5. PAINTED METAL MESH GUARDRAIL. PAINT COLOR TO BE RUSTED REDDISH BROWN.
6. PAINTED EXTERIOR METAL DOOR. PAINT COLOR TO BE RUSTED REDDISH BROWN.
7. PREFINISHED EXTERIOR ALUMINUM DOOR WITH GLAZING. PAINT COLOR TO BE RUSTED REDDISH BROWN. GLAZING TO BE CLEAR LOW-E GLASS.
8. EXTERIOR ALUMINUM STOREFRONT GLAZING SYSTEM. FRAME FINISH TO BE MEDIUM BRONZE. GLAZING TO BE CLEAR LOW-E GLASS.
9. GLAZED OVERHEAD DOOR. FRAME FINISH TO BE MEDIUM BRONZE. GLAZING TO BE CLEAR LOW-E GLASS.
10. OPERABLE DOOR GLAZING SYSTEM. FRAME FINISH TO BE MEDIUM BRONZE. GLAZING TO BE CLEAR LOW-E GLASS.
11. METAL ENTRY CANOPY FASCIA. COLOR TO BE RUSTED REDDISH BROWN.
12. INTEGRAL CMU RETAINING / GARDEN WALL. TOP OF WALL TO BE AS SHOWN. CMU COLOR TO BE STACKED MULTI-COLOR EARTHTONE TAN MIX.
13. INTEGRAL CMU RETAINING WALL WITH METAL GUARDRAIL ON TOP. TOP OF GUARDRAIL TO BE 11'-0" A.F.F. CMU COLOR TO BE STACKED MULTI-COLOR EARTHTONE TAN MIX. GUARDRAIL COLOR TO BE RUSTED REDDISH BROWN.
14. 12" HIGH WALL MOUNTED BACK-LIT DIMENSIONAL ARCHITECTURAL LETTERS. COLOR TO BE MEDIUM BRONZE.
15. 18" HIGH WALL MOUNTED BACK-LIT DIMENSIONAL ARCHITECTURAL LETTERS. COLOR TO BE MEDIUM BRONZE.
16. PAINTED METAL GATE WITH METAL MESH INFIL PANEL. PAINT COLOR TO BE RUSTED REDDISH BROWN.
17. LANDSCAPED BERM.
18. CMU POST AND METAL MESH FENCE. TOP OF FENCE TO BE 6'-0" A.F.F. CMU COLOR TO BE STACKED MULTI-COLOR EARTHTONE TAN MIX. METAL COLOR TO BE RUSTED REDDISH BROWN.
19. PAINTED AUTOMATED METAL SERVICE GATE. PAINT COLOR TO BE RUSTED REDDISH BROWN. SOLID WASTE DUMPSTERS TO BE LOCATED WITHIN THIS SERVICE YARD GATE AND WALL.
20. LOCATION OF SOLID WASTE DUMPSTERS.



**NORTH DOMINGO BACA
MULTIGENERATIONAL CENTER**

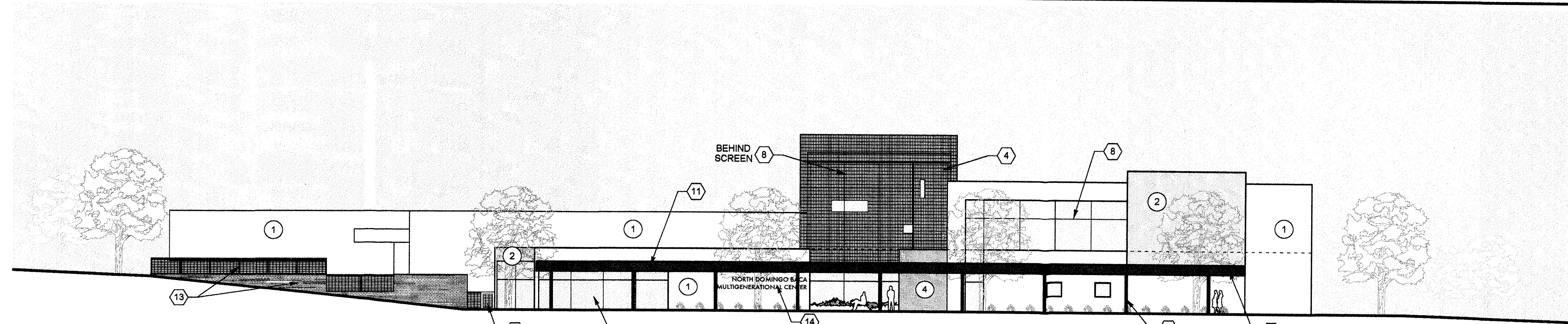
CITY OF ALBUQUERQUE
WYOMING BLVD. & CARMEL AVE. NE
ALBUQUERQUE, NM
AUGUST 2008

DATE	REVISIONS	DESCRIPTION
02/02/09	DRB REVISIONS	
09/28/08	EPC REVISIONS	
09/11/08	EPC REVISIONS	
	MMDDYY	

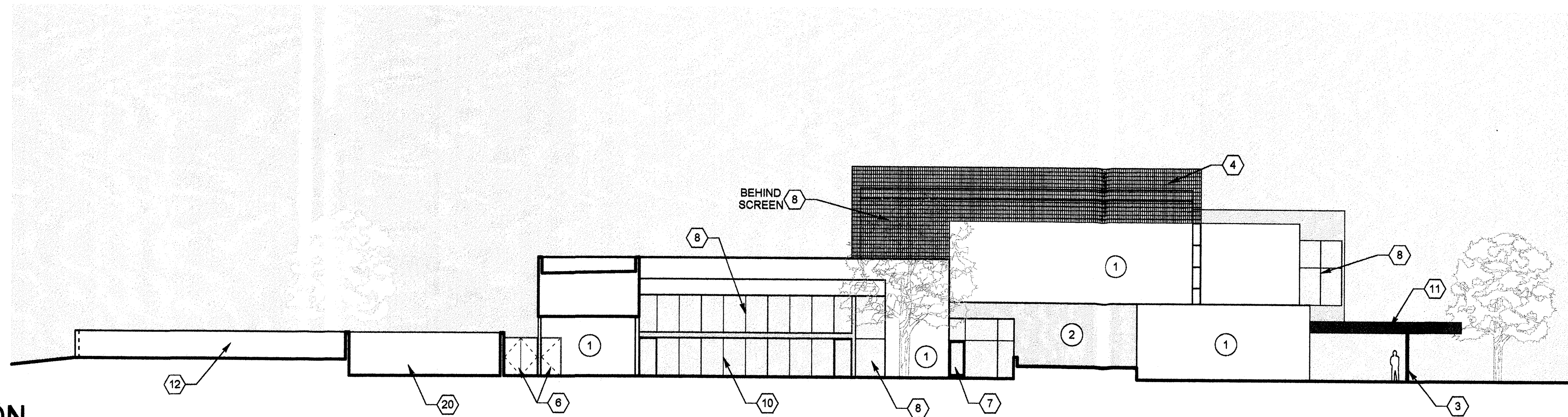
PROJECT NO:
FILE NAME:
DRAWN BY:
CHECKED BY:
COPYRIGHT:
OTHER:

SHEET TITLE:
**BUILDING
ELEVATIONS -
PHASE 1 & 2**

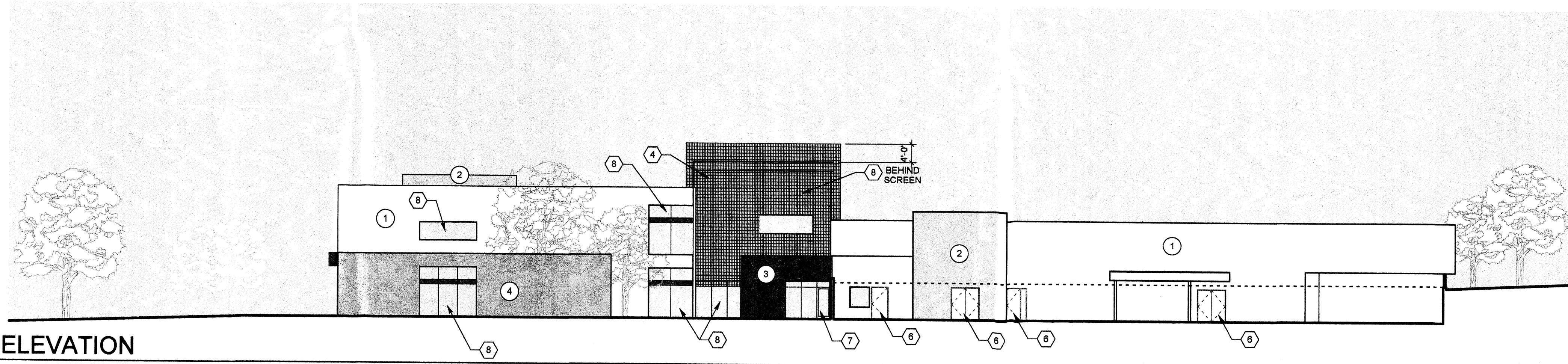
A-201



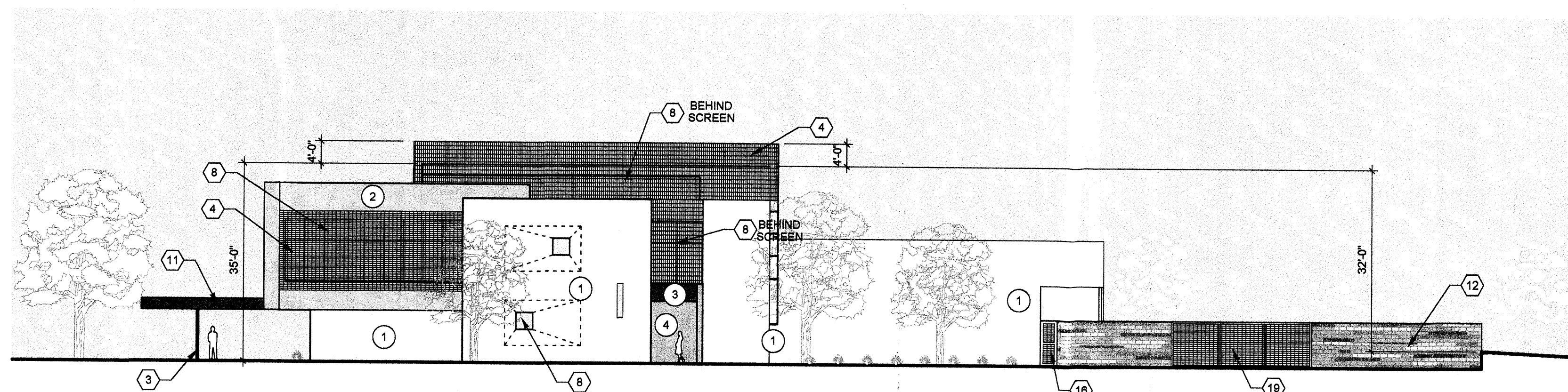
D1 NORTH ELEVATION (ENTRY)
1/16" = 1'-0"



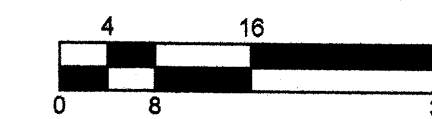
C1 EAST ELEVATION
1/16" = 1'-0"



B1 SOUTH ELEVATION
1/16" = 1'-0"



A1 WEST ELEVATION
1/16" = 1'-0"

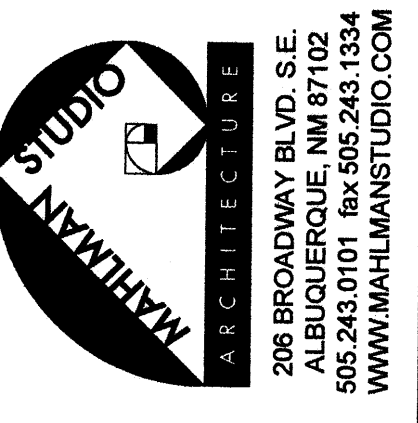


GENERAL SHEET NOTES

1. ALL EXTERIOR MATERIALS ARE TO HAVE A LOW LEVEL OF REFLECTANCE TO FULFILL THE DESIGN STANDARDS OF THE NDBP MASTER DEVELOPMENT PLAN.

SHEET KEYNOTES

1. INTEGRAL COLOR CMU. CMU COLOR TO BE STACKED MULTI-COLOR EARTHTONE TAN MIX.
2. THREE-COAT STUCCO FINISH SYSTEM WITH ACRYLIC COLOR COAT. COLORS TO BE AS FOLLOWS:
 - ① WHITE
 - ② WARM TONE TAN
 - ③ RUSTED REDDISH BROWN
 - ④ GOLDEN OCHRE
3. PAINTED STEEL COLUMN. PAINT COLOR TO BE RUSTED REDDISH BROWN.
4. PAINTED METAL MESH SOLAR SCREEN MOUNTED ON ANGLE FRAME SUPPORT. SCREEN AND FRAME TO BE PAINTED RUSTED REDDISH BROWN.
5. PAINTED METAL MESH GUARDRAIL. PAINT COLOR TO BE RUSTED REDDISH BROWN.
6. PAINTED EXTERIOR METAL DOOR. PAINT COLOR TO BE RUSTED REDDISH BROWN.
7. PREFINISHED EXTERIOR ALUMINUM DOOR WITH GLAZING. PAINT COLOR TO BE RUSTED REDDISH BROWN. GLAZING TO BE CLEAR LOW-E GLASS.
8. EXTERIOR ALUMINUM STOREFRONT GLAZING SYSTEM. FRAME FINISH TO BE MEDIUM BRONZE. GLAZING TO BE CLEAR LOW-E GLASS.
9. GLAZED OVERHEAD DOOR. FRAME FINISH TO BE MEDIUM BRONZE. GLAZING TO BE CLEAR LOW-E GLASS.
10. OPERABLE DOOR GLAZING SYSTEM. FRAME FINISH TO BE MEDIUM BRONZE. GLAZING TO BE CLEAR LOW-E GLASS.
11. METAL ENTRY CANOPY FASCIA. COLOR TO BE RUSTED REDDISH BROWN.
12. INTEGRAL CMU RETAINING / GARDEN WALL. TOP OF WALL TO BE AS SHOWN. CMU COLOR TO BE STACKED MULTI-COLOR EARTHTONE TAN MIX.
13. INTEGRAL CMU RETAINING WALL WITH METAL GUARDRAIL ON TOP. TOP OF GUARDRAIL TO BE 11'-8" A.F.F. CMU COLOR TO BE STACKED MULTI-COLOR EARTHTONE TAN MIX. GUARDRAIL COLOR TO BE RUSTED REDDISH BROWN. COLOR TO BE MEDIUM BRONZE.
14. 12" HIGH WALL MOUNTED BACK-LIT DIMENSIONAL ARCHITECTURAL LETTERS. COLOR TO BE MEDIUM BRONZE.
15. 18" HIGH WALL MOUNTED BACK-LIT DIMENSIONAL ARCHITECTURAL LETTERS. COLOR TO BE MEDIUM BRONZE.
16. PAINTED METAL GATE WITH METAL MESH INFIL PANEL. PAINT COLOR TO BE RUSTED REDDISH BROWN.
17. LANDSCAPED BERM.
18. CMU POST AND METAL MESH FENCE. TOP OF FENCE TO BE 6'-0" A.F.F. CMU COLOR TO BE STACKED MULTI-COLOR EARTHTONE TAN MIX. METAL COLOR TO BE RUSTED REDDISH BROWN.
19. PAINTED AUTOMATED METAL SERVICE GATE. PAINT COLOR TO BE RUSTED REDDISH BROWN. SOLID WASTE DUMPSTERS TO BE LOCATED WITHIN THIS SERVICE YARD GATE AND WALL.
20. LOCATION OF SOLID WASTE DUMPSTERS.



**NORTH DOMINGO BACA
MULTIGENERATIONAL CENTER**

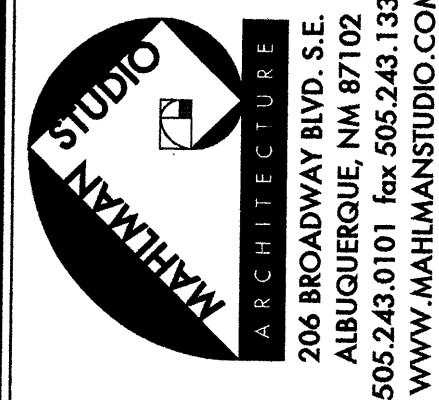
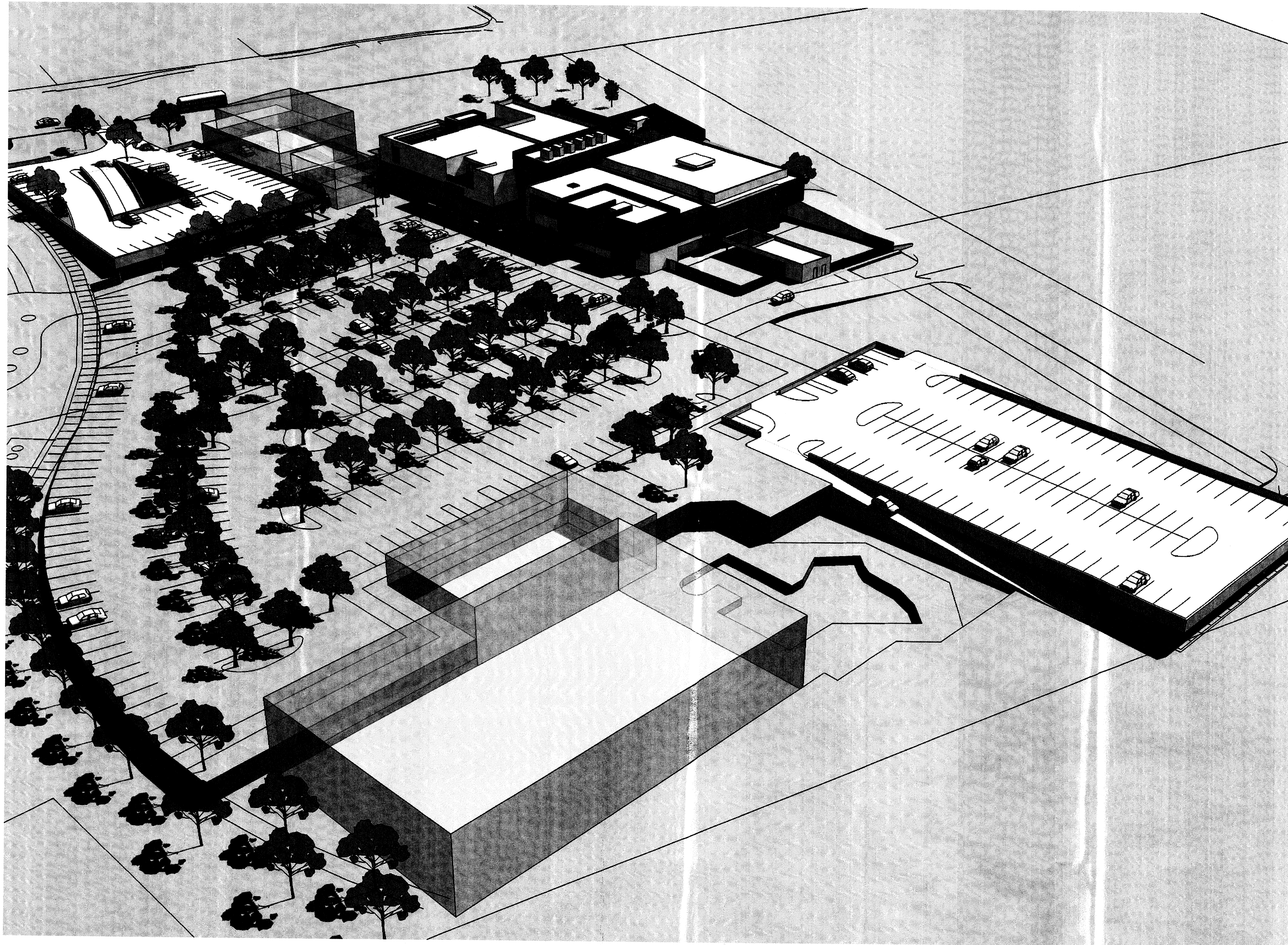
CITY OF ALBUQUERQUE
WYOMING BLVD. & CARMEL AVE. NE
ALBUQUERQUE, NM
AUGUST 2008

DATE	REVISIONS	DESCRIPTION
02/02/09	DRB REVISIONS	
09/29/08	EPC REVISIONS	
09/11/08	EPC REVISIONS	
	MARK	

PROJECT NO:
FILE NAME:
DRAWN BY:
CHECKED BY:
COPYRIGHT:
OTHER:

SHEET TITLE:
**BUILDING
ELEVATIONS -
PHASE 1**

A-202



206 BROADWAY BLVD. S.E.
ALBUQUERQUE, NM 87102
505.243.0101 Fax: 505.243.1334
WWW.MAHMANSTUDIO.COM

**NORTH DOMINGO BACA
MULTIGENERATIONAL CENTER**

CITY OF ALBUQUERQUE
WYOMING BLVD. & CARMEL AVE. NE
ALBUQUERQUE, NM
AUGUST 2008

MARK	MM/DD/YY	DESCRIPTION
08/11/08	EPC REVISIONS	

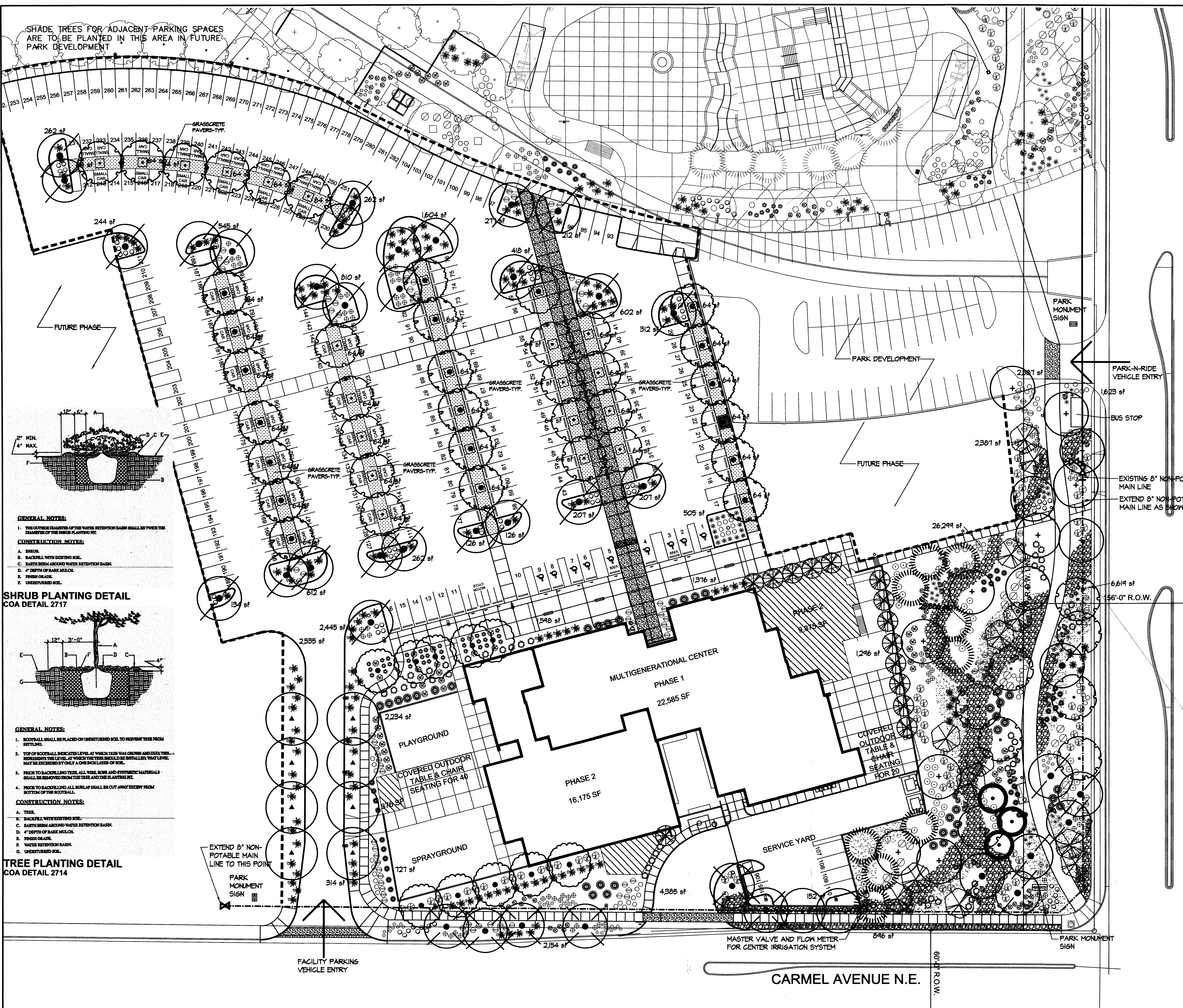
PROJECT NO:
FILE NAME:
DRAWN BY:
CHECKED BY:
COPYRIGHT:
OTHER:

SHEET TITLE:
**SITE
PERSPECTIVE
FROM
NORTHWEST**

A-301

A1 SITE PERSPECTIVE FROM NORTHWEST
NO SCALE

FILE PATH: FILE NAME: SHEET NAME:

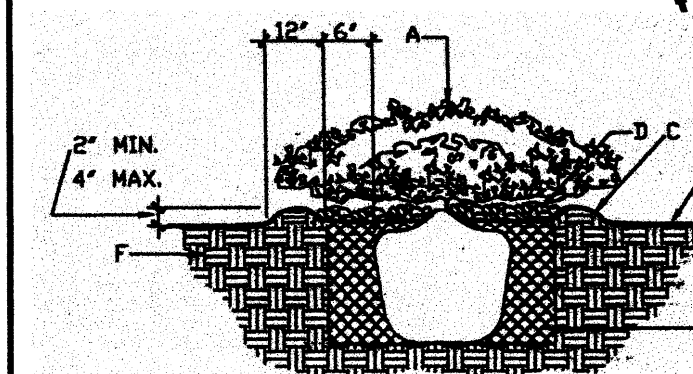


SHADE TREES FOR ADJACENT PARKING SPACES ARE TO BE PLANTED IN THIS AREA IN FUTURE PARK DEVELOPMENT

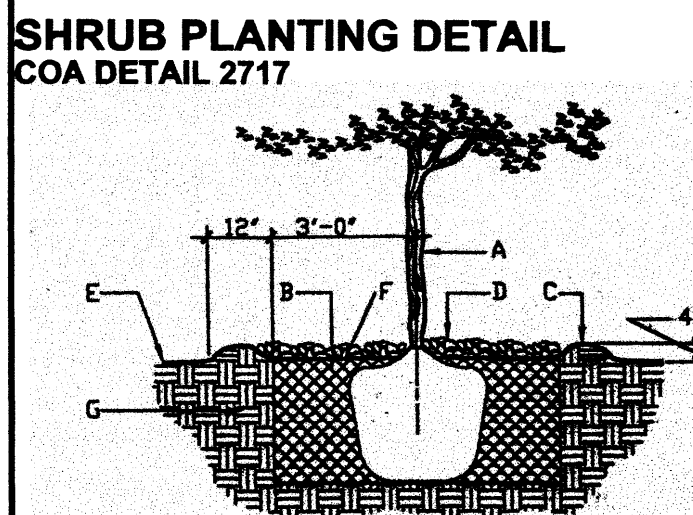
FUTURE PHASE

PARK DEVELOPMENT

FUTURE PHASE



GENERAL NOTES:
 1. THIS OUTSIDE DIAMETER OF THE WATER RETENTION BASIN SHALL BE TWICE THE DIAMETER OF THE SHRUB PLANTING PIT.
CONSTRUCTION NOTES:
 A. SHRUB.
 B. BACKFILL WITH EXISTING SOIL.
 C. BATHY BERM AROUND WATER RETENTION BASIN.
 D. 4" DEPTH OF BARK MULCH.
 E. FINISH GRADE.
 F. UNDISTURBED SOIL.

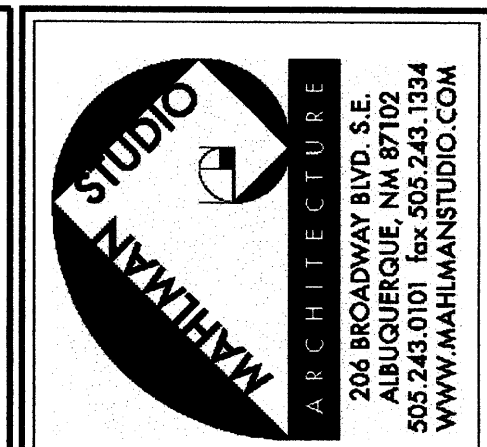
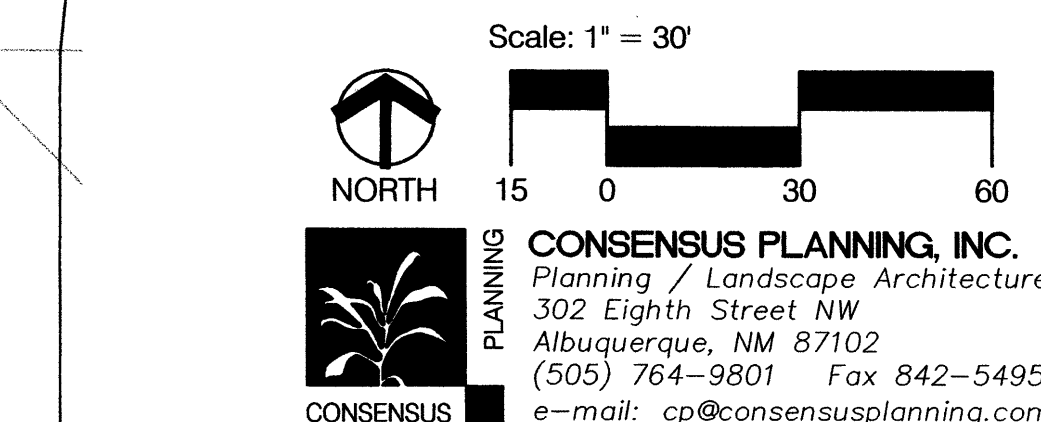


GENERAL NOTES:
 1. ROOTBALL SHALL BE PLACED ON UNDISTURBED SOIL TO PREVENT TREE FROM SETTLING.
 2. TOP OF ROOTBALL INDICATES LEVEL AT WHICH TREE WAS GROWN AND THAT TREE, INCLUDING THE LEVEL AT WHICH THE TREE SHALL BE INSTALLED, THAT LEVEL MAY BE EXCEEDED BY ONLY A ONE INCH LAYER OF SOIL.
 3. PRIOR TO BACKFILLING TREE, ALL WIRE, ROPE AND SYNTHETIC MATERIALS SHALL BE REMOVED FROM THE TREE AND THE PLANTING PIT.
 4. PRIOR TO BACKFILLING ALL BURLAP SHALL BE CUT AWAY EXCEPT FROM BOTTOM OF THE ROOTBALL.
CONSTRUCTION NOTES:
 A. TREE.
 B. BACKFILL WITH EXISTING SOIL.
 C. BATHY BERM AROUND WATER RETENTION BASIN.
 D. 4" DEPTH OF BARK MULCH.
 E. FINISH GRADE.
 F. WATER RETENTION BASIN.
 G. UNDISTURBED SOIL.

TREE PLANTING DETAIL
 COA DETAIL 2714

Qty.	Symbol	Scientific Name Common Name	Size
13	⊗	Chilopsis linearis 'Luc. Ham.' Desert Willow	2" B4B
15	⊙	Fraxinus oxycarpa 'Raywood' Raywood Ash	2" B4B
34	⊗	Fraxinus velutina 'Modesto' Modesto Ash	2" B4B
14	⊗	Lagerstroemia indica Crape Myrtle	24" Box
3	⊙	Pinus eldarica Afghan Pine	10" B4B
4	⊙	Pinus nigra Austrian Pine	8" B4B
6	⊙	Platanus wrightii Arizona Sycamore	2" B4B
11	⊙	Pyrus calleryana 'Cleveland' Flowering Pear	2" B4B
19	⊙	Sophora japonica Japanese Pagoda Tree	2" B4B
6	⊗	Tilia cordata Little-leaf Linden	2" B4B
28	⊗	Ulmus parvifolia 'Allee II' Allee Lacebark Elm	2" B4B
Shrubs/Groundcovers			
37	⊗	Caryopteris clandonensis Blue Mist	5-Gal.
32	⊙	Chrysothamnus nauseosus Chamisa	1-Gal.
46	⊗	Artemisia filifolia Sand Sage	1-Gal.
44	⊙	Ericameria laricifolia 'Aguirre' Turpentine Bush	1-Gal.
87	⊗	Fallugia paradoxa Apache Plume	1-Gal.
31	*	Hesperaloe parviflora Red Yucca	5-Gal.
142	*	Juniperus sabinia 'Buffalo' Buffalo Juniper	5-Gal.
85	⊙	Lavendula angustifolia English Lavender	1-Gal.
32	⊗	Ferovskia atriplicifolia Russian Sage	1-Gal.
37	⊗	Pinus mugo mugo Mugo Pine	5-Gal.
40	⊙	Potentilla fruticosa Shrubby Cinquefoil	1-Gal.
110	⊙	Raphiolepis indica India Hawthorn	5-Gal.
35	⊙	Rhus trilobata Three-leaf Sumac	5-Gal.
50	⊙	Rosmarinus officinalis Rosemary	5-Gal.
84	⊗	Salvia greggii Cherry Sage	1-Gal.
Ornamental Grasses			
35	*	Miscanthus sinensis 'Gracillimus Maiden Hair Grass	5-Gal.
56	*	Muhlenbergia cap. 'Regal Mist' Muhly Grass	5-Gal.
39	*	Nassella tenuissima Threadgrass	1-Gal.
10	*	Nolina microcarpa Beargrass	5-Gal.
81	⊙	Landscape boulders (3' min. dimension-moss rock).	
8606 sq. ft.	⊙	2"-4" San Lazarus cobble (6" depth over filter fabric on flat grades - no fabric on slope).	
7,007 sq. ft.	⊙	Santa Fe brown Crusher Fines (4" depth)	

GENERAL LANDSCAPE NOTES
 The effective rooting volume for all trees within the parking lot has been increased by the addition of "grasscrete" pavers around each tree. This will provide a wider area for percolation of water and introduction of oxygen to the trees root system.



NORTH DOMINGO BACA MULTIGENERATIONAL CENTER
 CITY OF ALBUQUERQUE
 WYOMING BLVD. & CARMEL AVE. NE
 ALBUQUERQUE, NM
 AUGUST, 2008

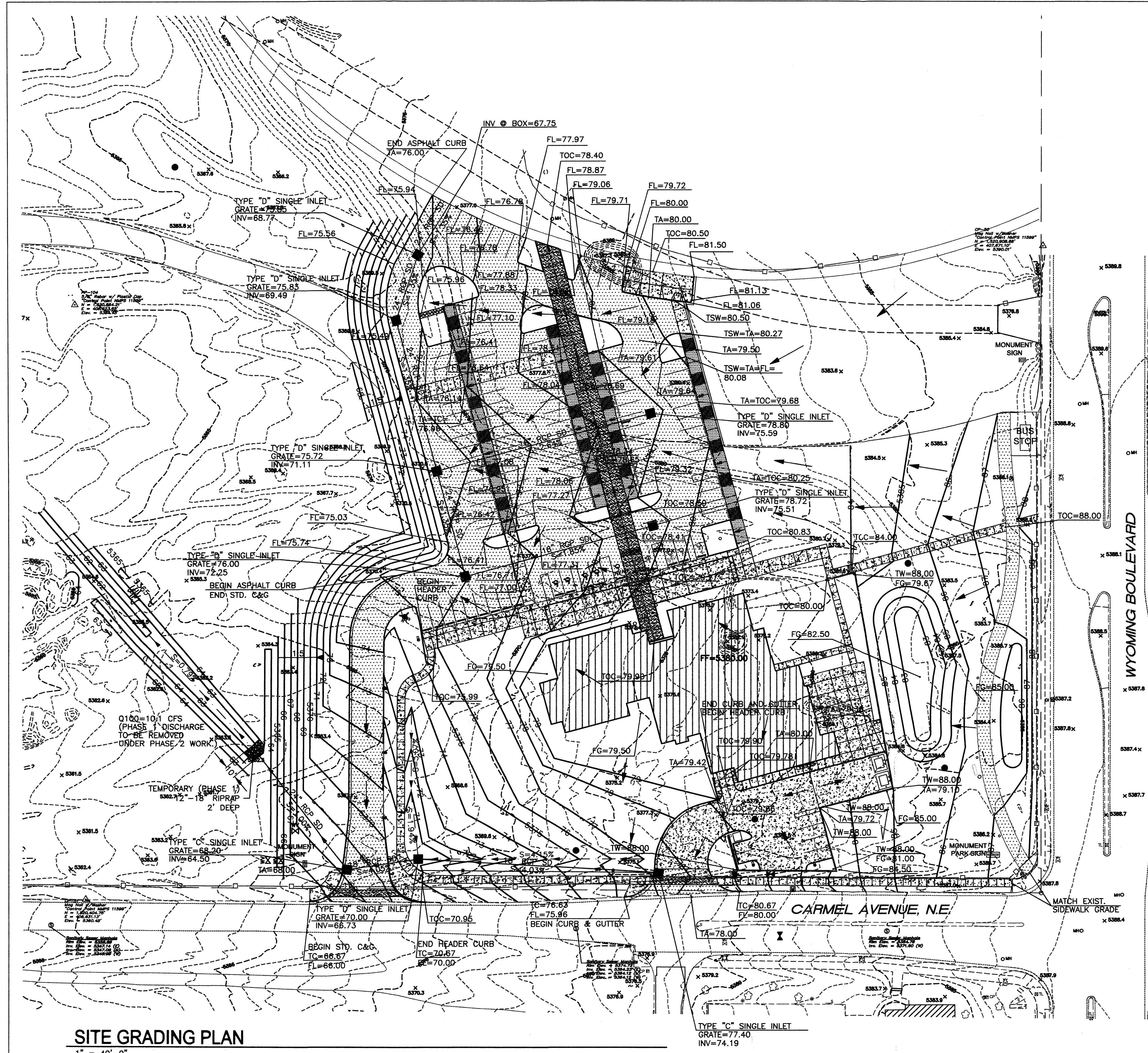
MARK	IMAGERY	DESCRIPTION

PROJECT NO:
 FILE NAME:
 DRAWN BY:
 CHECKED BY:
 COPYRIGHT:
 OTHER:

SHEET TITLE:

LANDSCAPE PLAN

PHASE 1 & 2



GENERAL SHEET NOTES

- ALL CURB IS HEADER CURB, UNLESS SPECIFIED AS OTHER.
- REFER TO SHEET G-102 FOR DRAINAGE INFORMATION.

LEGEND

TW	TOP OF WALL
TA	TOP OF ASPHALT
TC	TOP OF CURB
TOC	TOP OF CONCRETE
FG	FINISH GROUND
FL	FLOW LINE

SURVEY INFORMATION		FIELD NOTES	
NO.	DATE	NO.	DATE

SEAL		REVISIONS	
NO.	DATE	NO.	DATE

CITY OF ALBUQUERQUE CAPITAL IMPLEMENTATION PROGRAM	
PROJECT TITLE:	NORTH DOMINGO BACA MULTIGENERATIONAL CENTER 7520 CARMEL AVE. NE ALBUQUERQUE, NEW MEXICO 87113
DRAWING TITLE:	SITE GRADING AND DRAINAGE PLAN PHASE 1 DEVELOPMENT
DESIGN REVIEW COMMITTEE	CITY ENGINEER APPROVAL
CITY PROJECT NO. 7474.01	ZONE MAP NO. C-19-Z
DWG.	G-101
SHEET	OF

FILE PATH: FILE NAME: SHEET NAME:

