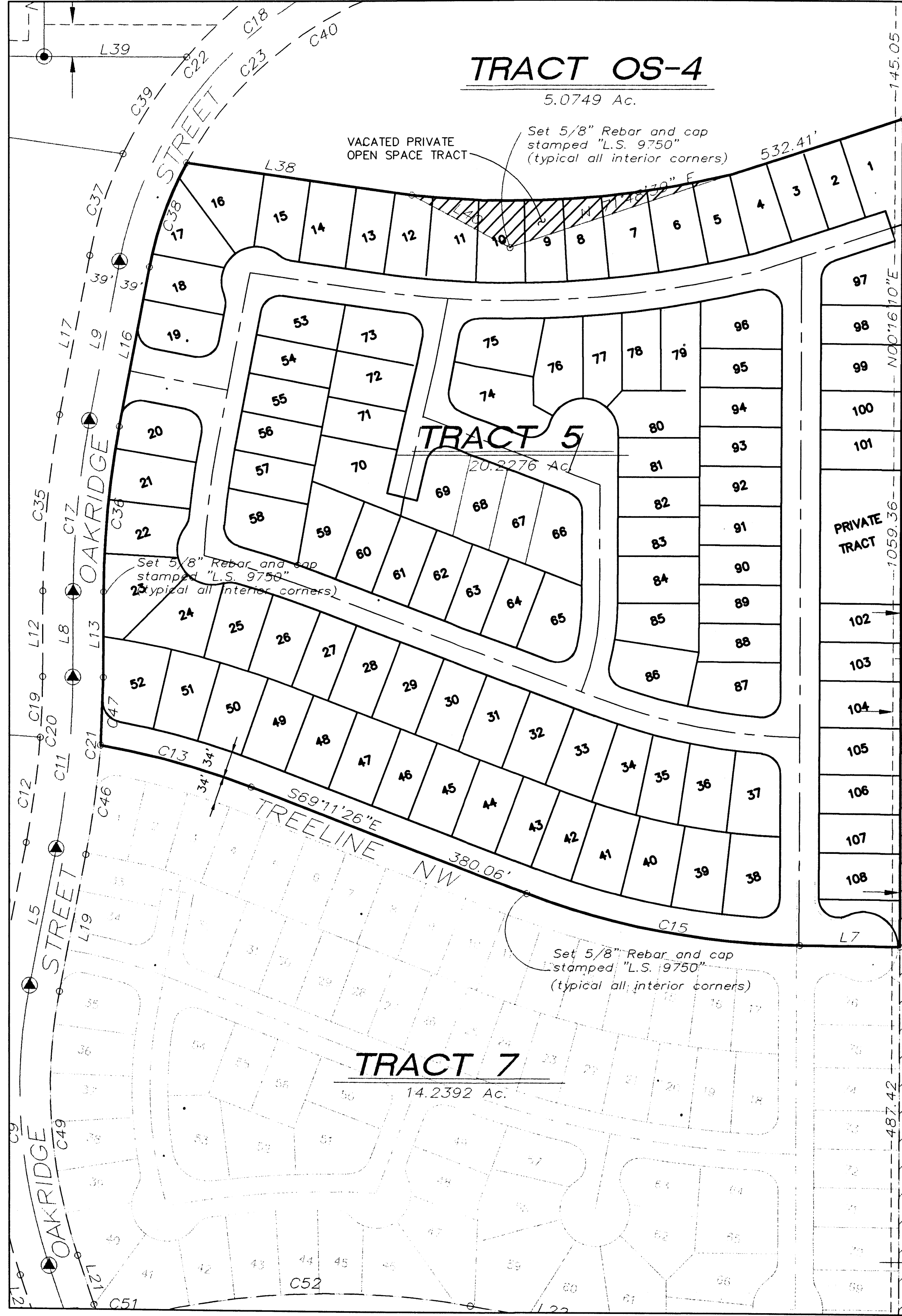


**TRACT OS-4**  
5.0749 Ac.

SKETCH PLAT FOR  
**TRACT 5,  
THE TRAILS  
UNIT TWO**  
CITY OF ALBUQUERQUE  
BERNALILLO COUNTY, NEW MEXICO  
FEBRUARY, 2005

**SITE DATA NOTE**

1. AREA = 20.2276 Ac.
2. LOT WIDTHS: 50' and 60'
3. AVG. LOT DEPTH: 105'
4. TOTAL NUMBER OF LOTS: 108
5. LOTS FRONTING ON TRELINE: 15



SONRISE BAPTIST CHURCH  
FILED: MAY 17, 1999  
(BK.9907, PG.4883)

**UNPLATTED  
PARCEL 1-6**  
The Trails, LLC  
Special Warranty Deed  
Filed Sept. 24, 2003  
Book A65, Page 5664

Existing 100' Plains  
Electric Easement

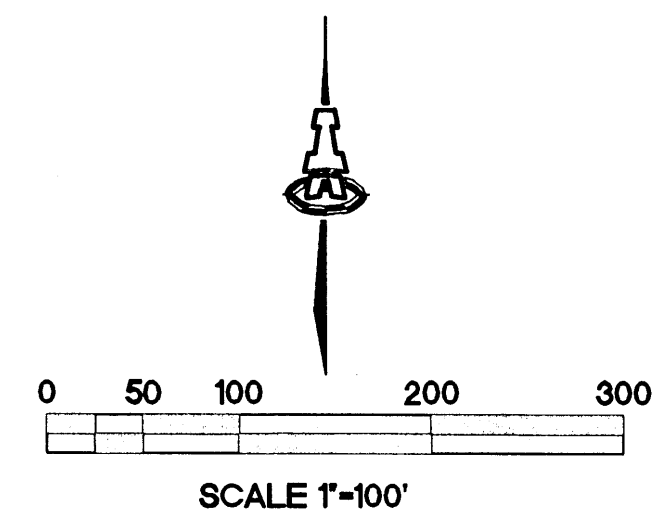
10' Public Service Company Easement  
granted by Document # 2004121843  
filed August 27, 2004 in Book A83

Found 5/8" Rebar and cap  
stamped "L.S. 5978"

Existing 50' Roadway and Underground  
Public and Private Utility Easement  
filed October 8, 2002 in Book A43.

**UNPLATTED  
PARCEL 4-7**  
The Trails, LLC  
Special Warranty Deed  
Filed Sept. 24, 2003

Existing 100' Plains  
Electric Easement



**ISAACSON & ARFMAN, P.A.**  
Consulting Engineering Associates  
128 Monroe Street N.E.  
Albuquerque, New Mexico 87108  
Ph: 505-268-8828 Fax: 505-268-2632  
1431EXH1.DWGth 02/14/05

**STILLBROOKE HOMES  
TRACT 5 THE TRAILS**  
A 107 LOT SUBDIVISION

**PRELIMINARY LAYOUT**

Checked By:	Drawn By:	No.	Revision	<b>PAGE</b>
Date:	Job Number:			<b>SH OF</b>

100749