

005170

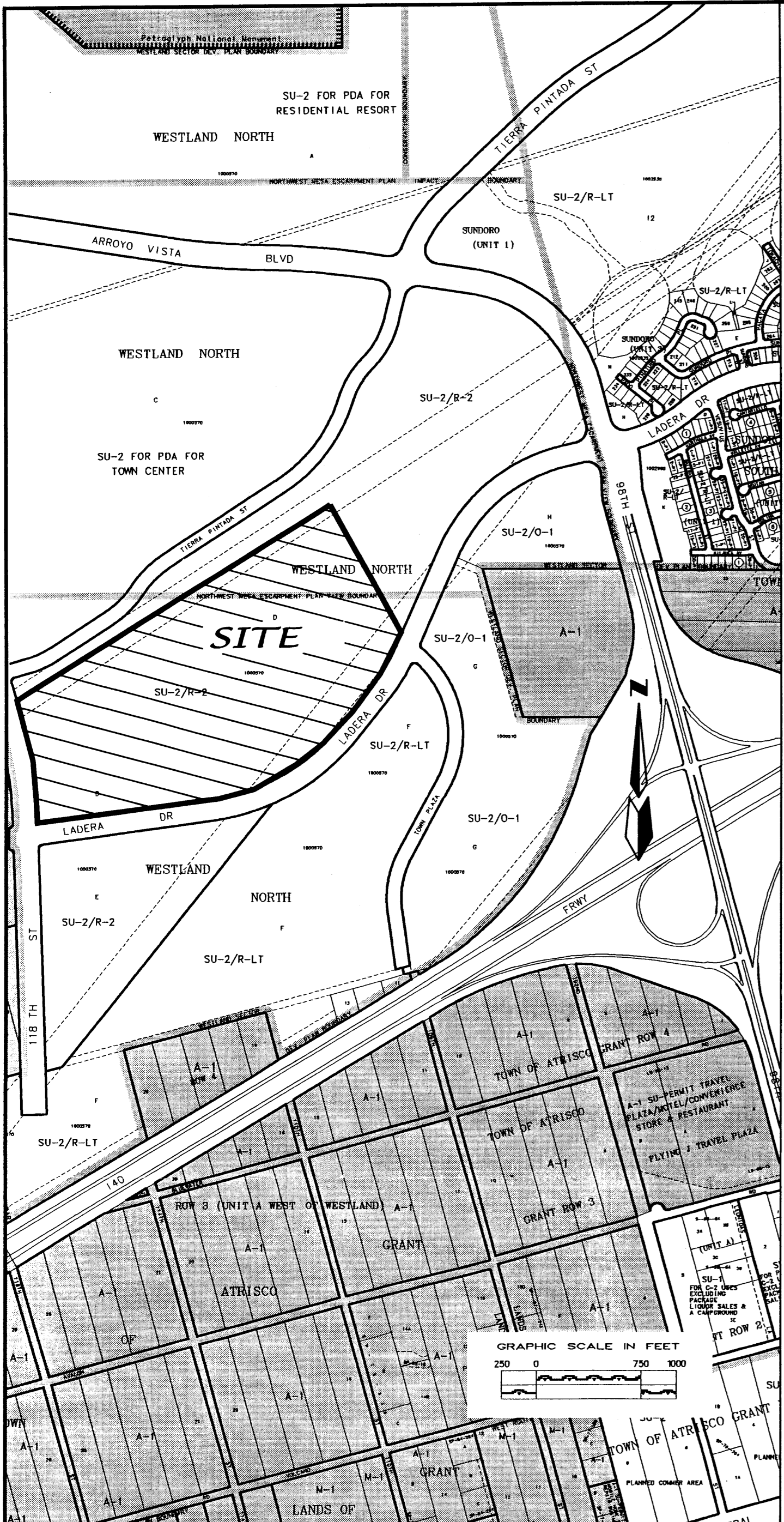
SKETCH PLAT
GRASSLANDS SUBDIVISION
 WITHIN THE
 TOWN OF ATRISCO GRANT
 PROJECTED SECTIONS 17 AND 20
 TOWNSHIP 10 NORTH, RANGE 2 EAST, NMPM
 CITY OF ALBUQUERQUE
 BERNALILLO COUNTY, NEW MEXICO
 MARCH, 2005

SUBDIVISION DATA

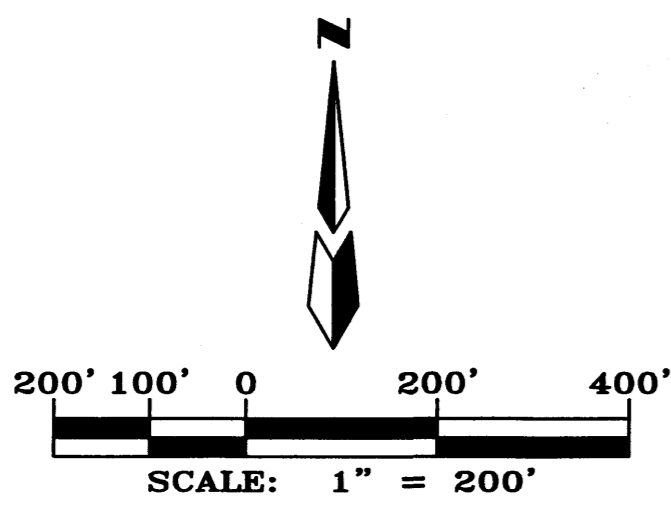
GROSS ACREAGE 149.0259 AC
 ZONE ATLAS NO. J-B & K-8
 LOTS CREATED 278

LEGAL DESCRIPTION

A tract of land situate within the Town of Atrisco Grant, projected Sections 17 and 20, Township 10 North, Range 2 East, New Mexico Principal Meridian, City of Albuquerque, Bernalillo County, New Mexico being all of Parcel D, Westland North filed in the office of the Bernalillo County Clerk on December 27, 2000, Volume 2000C, Folio 316, and containing 149.0259 acres more or less.



ZONE ATLAS K-8 AND J-8



OWNERS

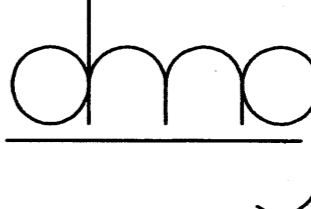
WESTLAND DEVELOPMENT CO. INC.
 401 COORS NW
 ALBUQUERQUE, N.M. 87109
 (505) 831-9600

ENGINEERS

D. MARK GOODWIN & ASSOCIATES, P.A.
 CONSULTING ENGINEERS
 P.O. BOX 90606
 ALBUQUERQUE, NEW MEXICO 87199
 (505) 828-2200

SURVEYOR

ALDRICH LAND SURVEY
 P.O. BOX 30701
 ALBUQUERQUE, N.M. 87190-0701
 (505) 884-1990

SKETCH PLAT			
GRASSLANDS SUBDIVISION			
		MARK GOODWIN & ASSOCIATES, P.A. CONSULTING ENGINEERS	
P.O. BOX 90606 ALBUQUERQUE, NEW MEXICO 87199 (505)828-2200, FAX (505)797-9539			
Dwg: SKETCH-B.dwg	Drawn: STEPHEN	Checked:	Sheet 1 of 1
Scale: as shown	Date: 03/08/05	Job: A04106	