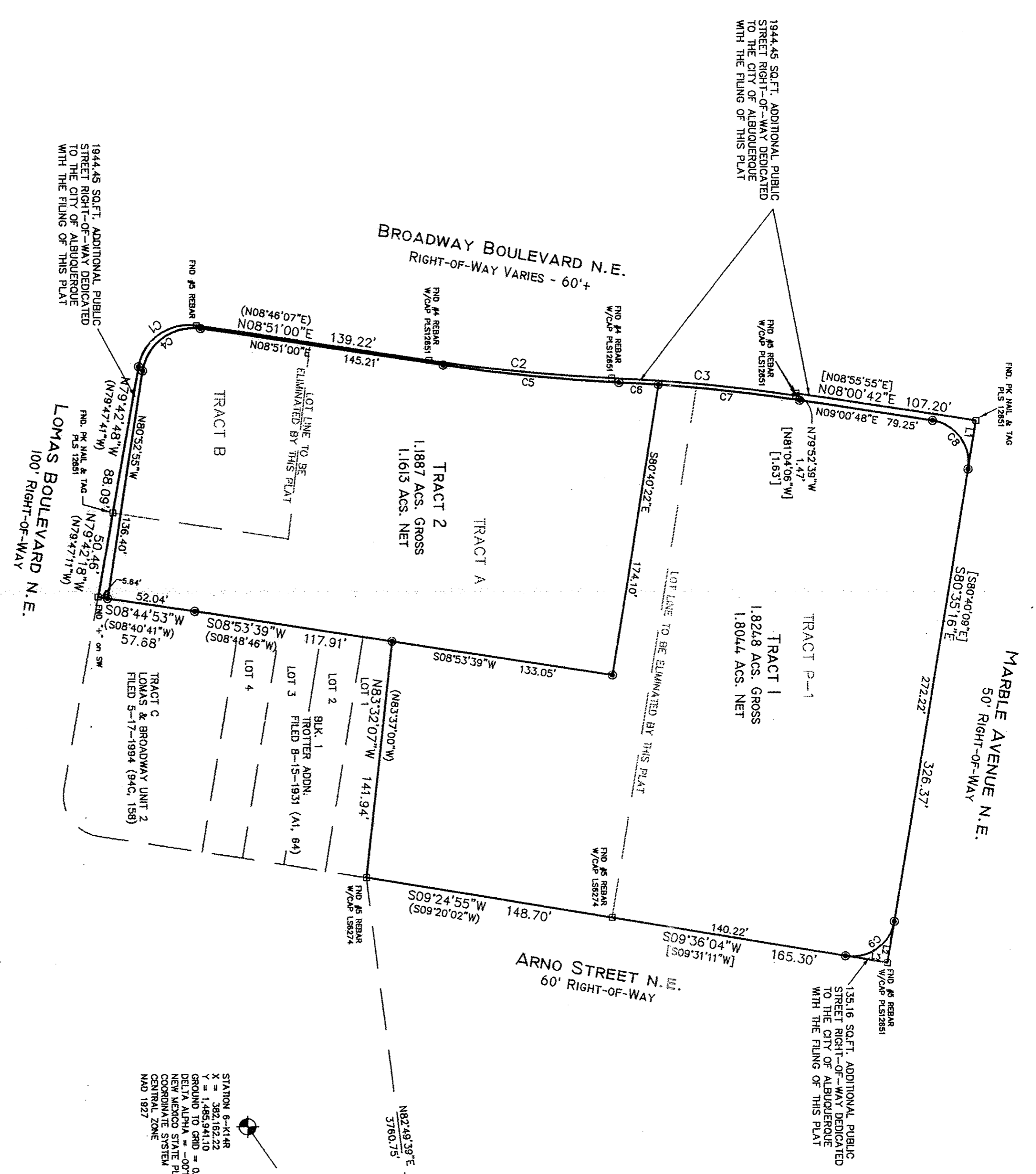


**PLAT OF
TRACTS 1 & 2
LANDS OF SANDIA FOUNDATION
SECTION 17, T. 10 N., R. 3 E., N.M.P.M.
CITY OF ALBUQUERQUE
BERNALILLO COUNTY, NEW MEXICO
AUGUST 2005
SHEET 2 OF 2**



CURVE TABLE

CURVE	RADIUS	LENGTH	DELTA	CHORD BEARING	CHORD LENGTH
C1	30.00'	46.37'	88.33.48"	N35.28.54"W	41.89'
C2	1000.00'	109.60'	6.16.46"	N05.42.37"E	109.54'
C3	1000.00'	109.60'	6.16.46"	N05.37.44"E	109.54'
C4	30.00'	46.88'	89.32.29"	N56.06.41"W	42.26'
C5	1001.95'	105.42'	6.01.41"	N05.50.09"E	105.37'
C6	997.58'	23.59'	1.21.17"	N03.29.57"E	23.59'
C7	997.58'	84.21'	4.50.12"	N06.35.42"E	84.19'
C8	25.00'	39.44'	90.23.56"	N54.12.46"E	35.48'
C9	25.00'	39.35'	90.11.20"	S35.29.56"E	35.41'

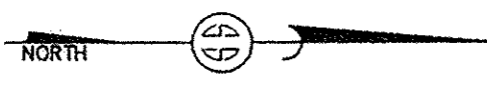
LINE TABLE

LINE	BEARING	LENGTH
L1	S80.35.16"E	29.07'
L2	S80.40.09"E	25.08'
L3	S09.36.04"W	25.08'
	S09.31.11"W	

2005124272
Page 2 of 2
82/25/2805 82.58P
82/25/2805 Pg-287
R 12:38 BK-8885C

Mary Herrera
Bern. Co. PLRT

SCALE: 1" = 50'
PROJECT NO. 0503PB17
DRAWN BY PCB
ZONE ATLAS J-14-2
CRS



STATION 6-K14R
X = 382,162.22
Y = 1,485,941.10
GROUND TO GRID = 0.99967824
DELTA ALPHA = -0073.35"
NEW MEXICO STATE PLANE
NAD 1927
CENTRAL ZONE

STATION 9-J1S
X = 386,023.85
Y = 1,486,023.85
GROUND TO GRID = 0.99967130
DELTA ALPHA = -0073.00"
NEW MEXICO STATE PLANE
COORDINATE SYSTEM
CENTRAL ZONE
NAD 1927

SURVEYS SOUTHWEST LTD.
333 LOMAS BLVD., N.E.
ALBUQUERQUE, NEW MEXICO 87102

PHONE: (505) 998-0303
FAX: (505) 998-0306

T10N R3E SEC. 17