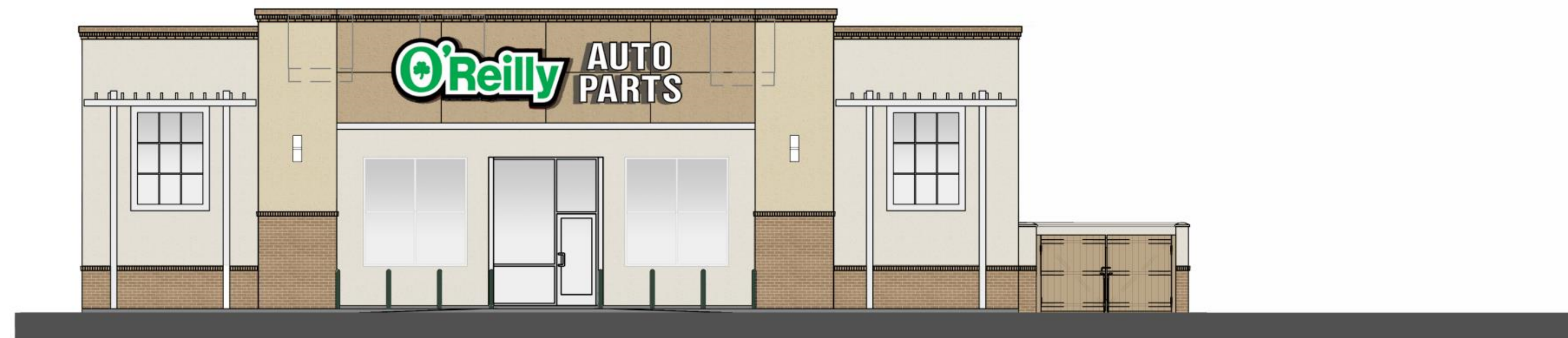


# Exterior Finish Legend



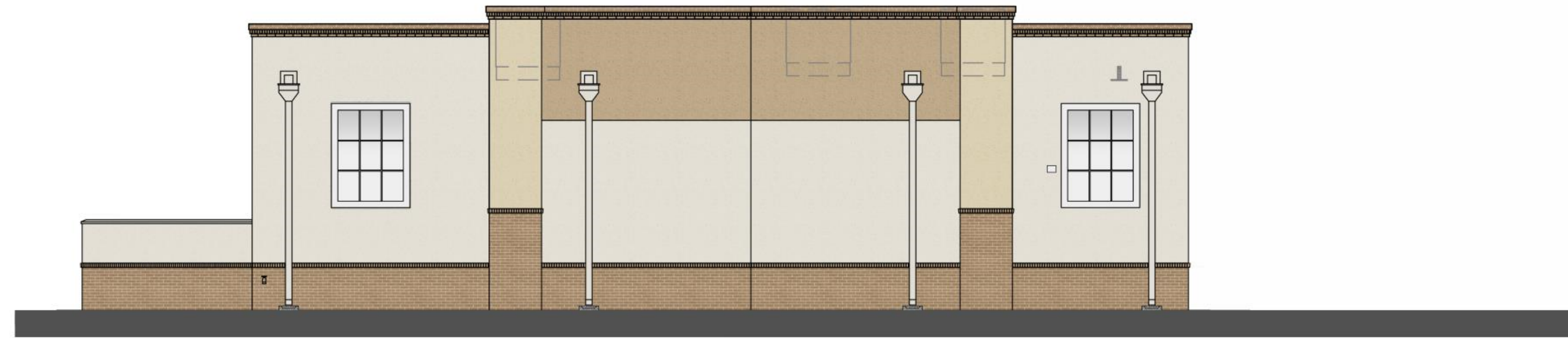
**1 WEST EXTERIOR ELEVATION**

A2.1 SCALE: 1/8" = 1'-0"



**2 SOUTH EXTERIOR ELEVATION**

A2.1 SCALE: 1/8" = 1'-0"














**3 EAST EXTERIOR ELEVATION**

A2.1 SCALE: 1/8" = 1'-0"



**4 NORTH EXTERIOR ELEVATION**

A2.1 SCALE: 1/8" = 1'-0"

-  STUCCO  
EQUAL TO SHERWIN WILLIAMS  
"LATTE" SW6108
-  STUCCO  
EQUAL TO SHERWIN WILLIAMS  
"SOFTER TAN" SW6141
-  STUCCO  
EQUAL TO DRYVIT  
"456 OYSTER SHELL"
-  THIN SET BRICK - CLAY MASONRY UNIT  
BLEND 600 OXFORD BROWN VELOUR
-  THIN SET BRICK CAP  
BLEND 600 OXFORD BROWN VELOUR
-  BRICK - CLAY MASONRY UNIT  
BLEND 600 OXFORD BROWN VELOUR
-  Aluminum and Glass Storefront System  
Efc, Kawneer, or Vista Wall  
"BONE WHITE" (6" Address Number - White)
-  DOORS, OVERHEAD DOORS AND FRAMES  
EQUAL TO DRYVIT  
"456 OYSTER SHELL"
-  SCUPPERS AND DOWNSPOUTS  
EQUAL TO DRYVIT  
"456 OYSTER SHELL"
-  Aluminum and Glass Storefront System  
Efc, Kawneer, or Vista Wall  
"BONE WHITE" (6" Address Number - White)
-  WOOD TRELLIS  
EQUAL TO KAWNEER "BONE WHITE"