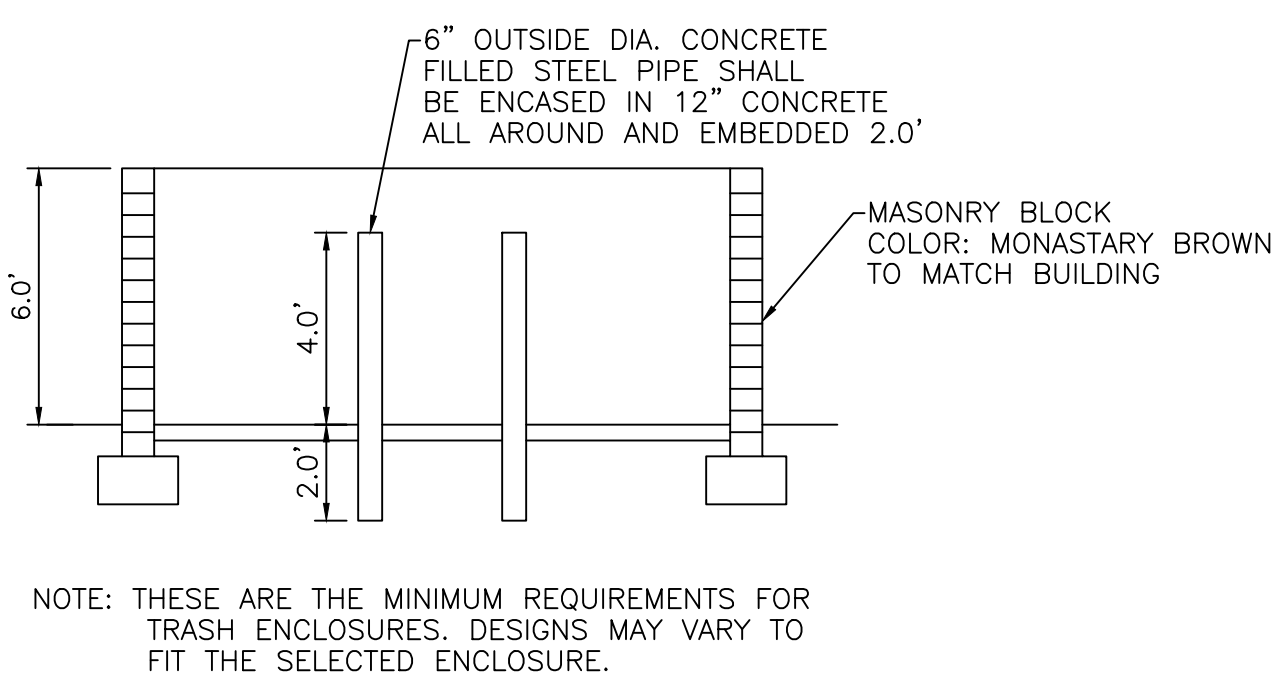
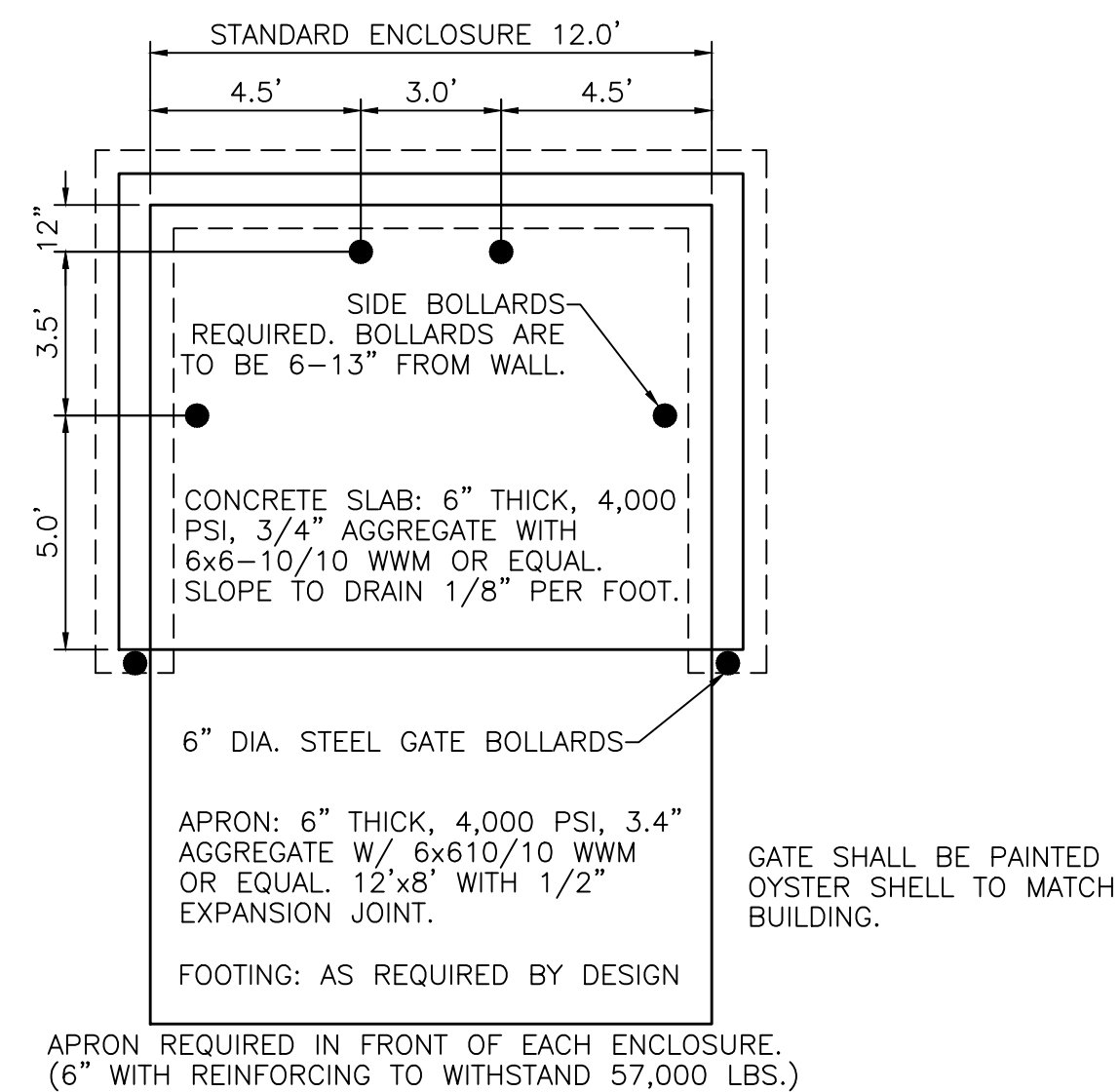
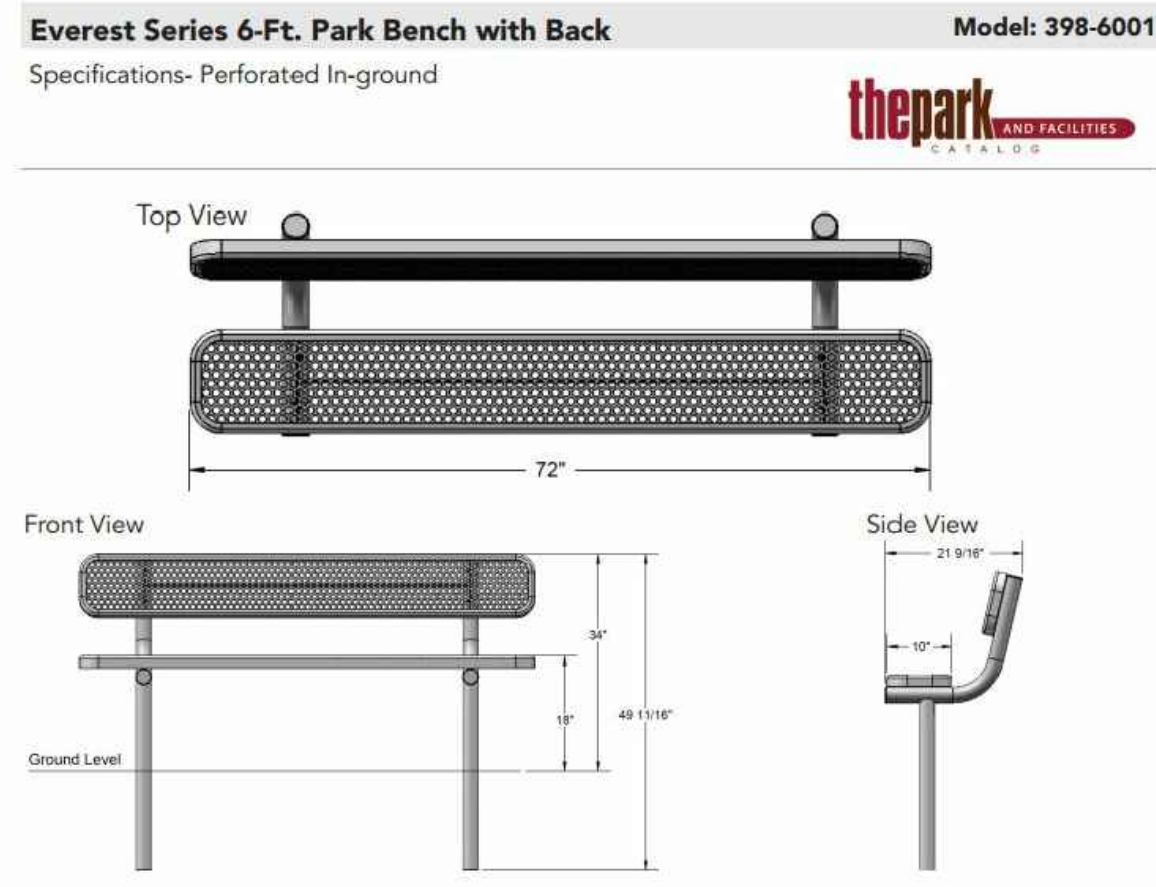


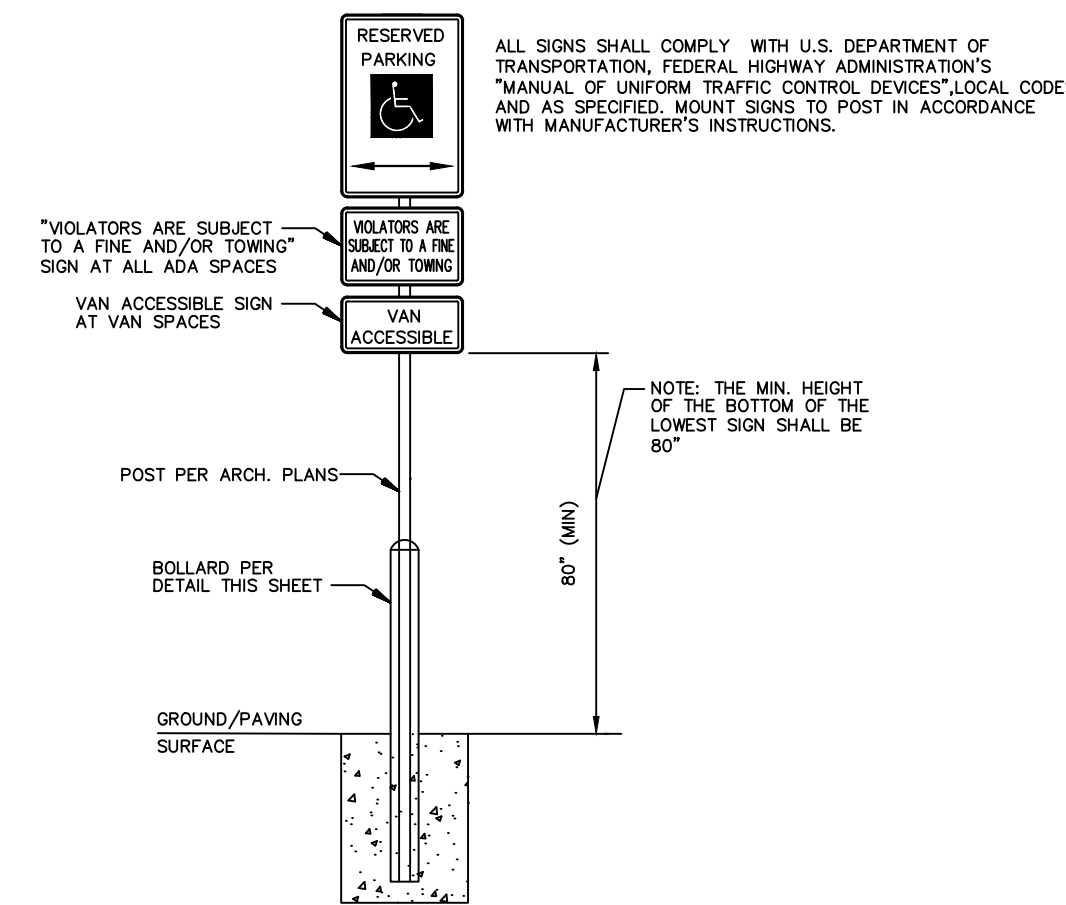
**Motorcycle Parking Sign**  
NTS



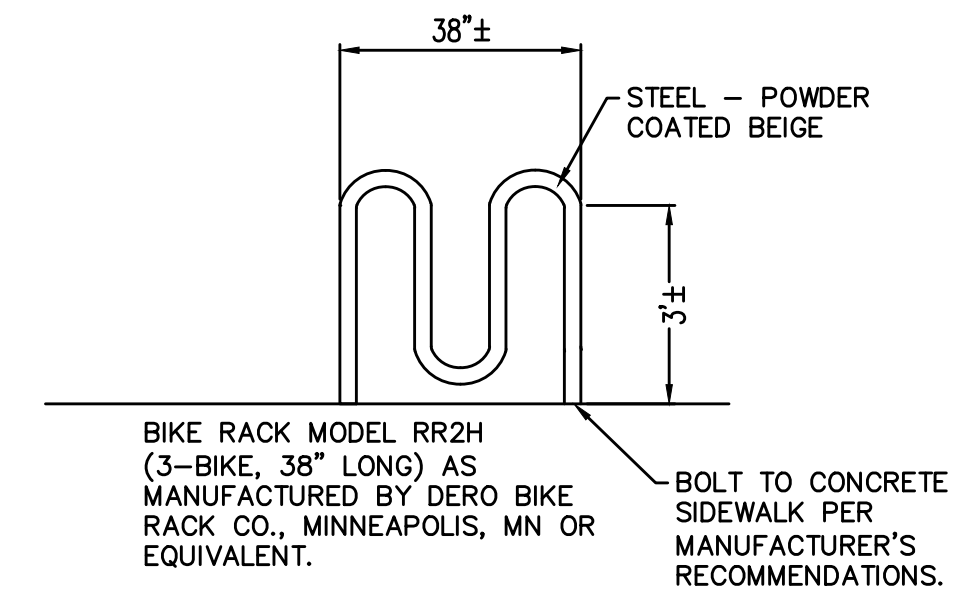
**Dumpster Enclosure Detail**  
NTS



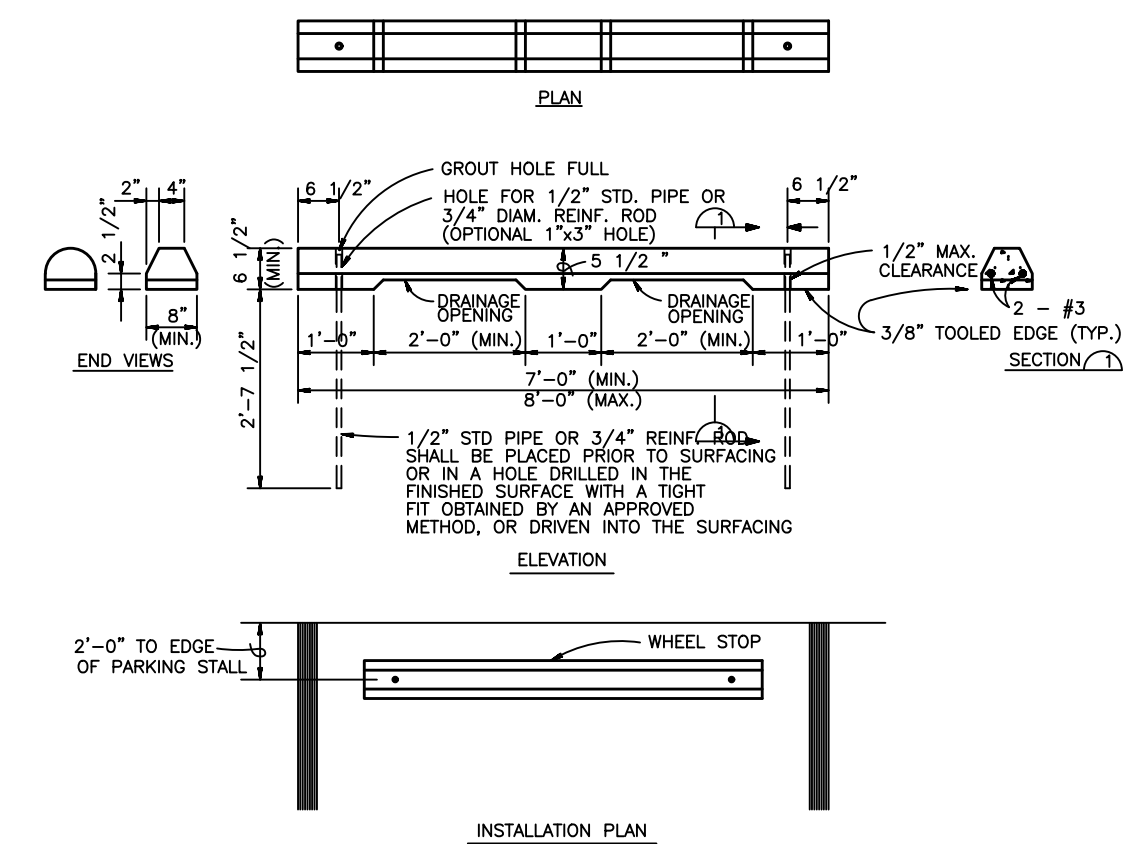
**Bench Detail**  
NTS



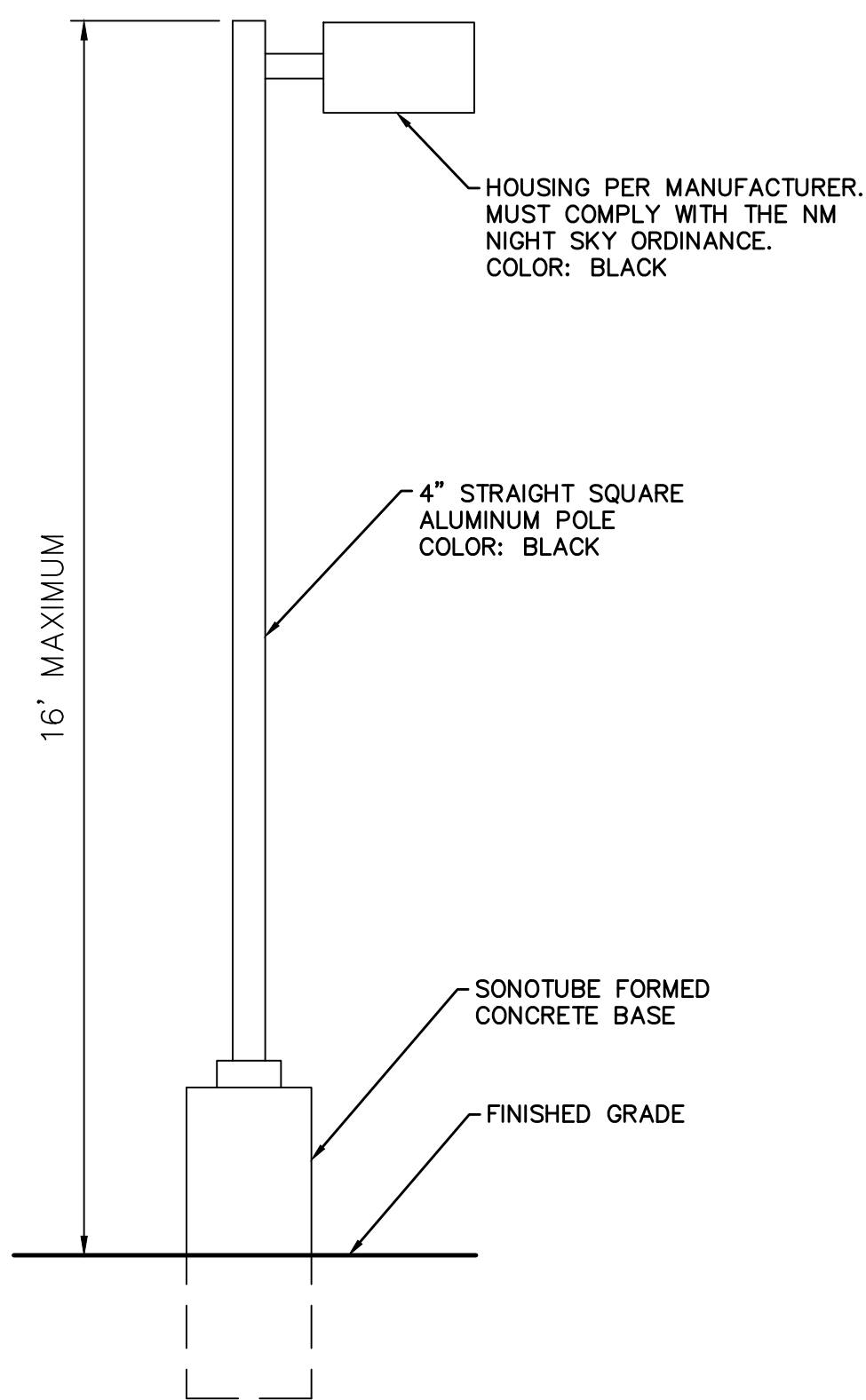
**H/C Sign Detail**  
NTS



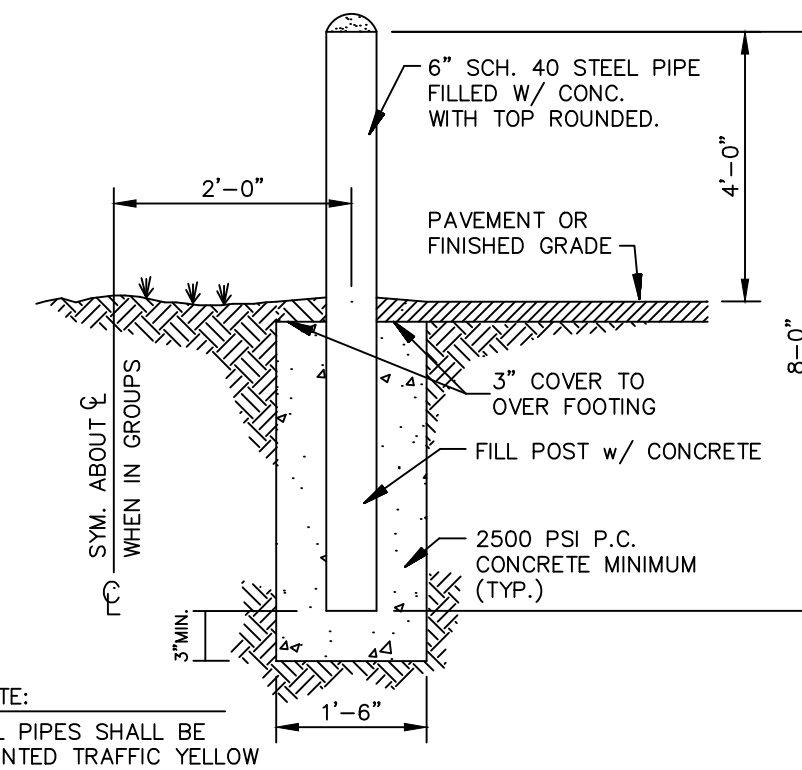
**Bike Rack Detail**  
NTS



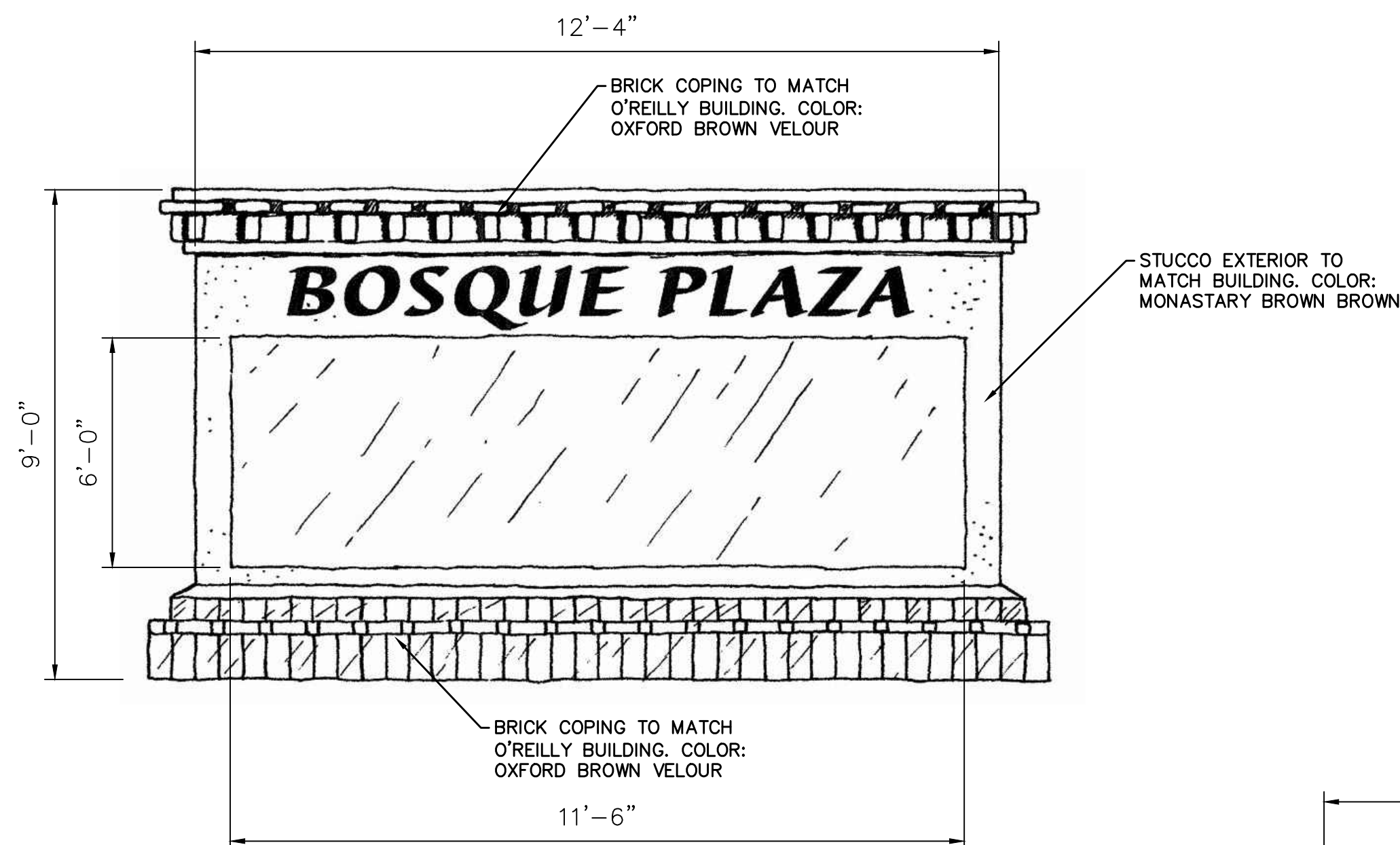
**Precast Concrete Wheel Stop**  
NTS



**Light Pole Detail**  
NTS

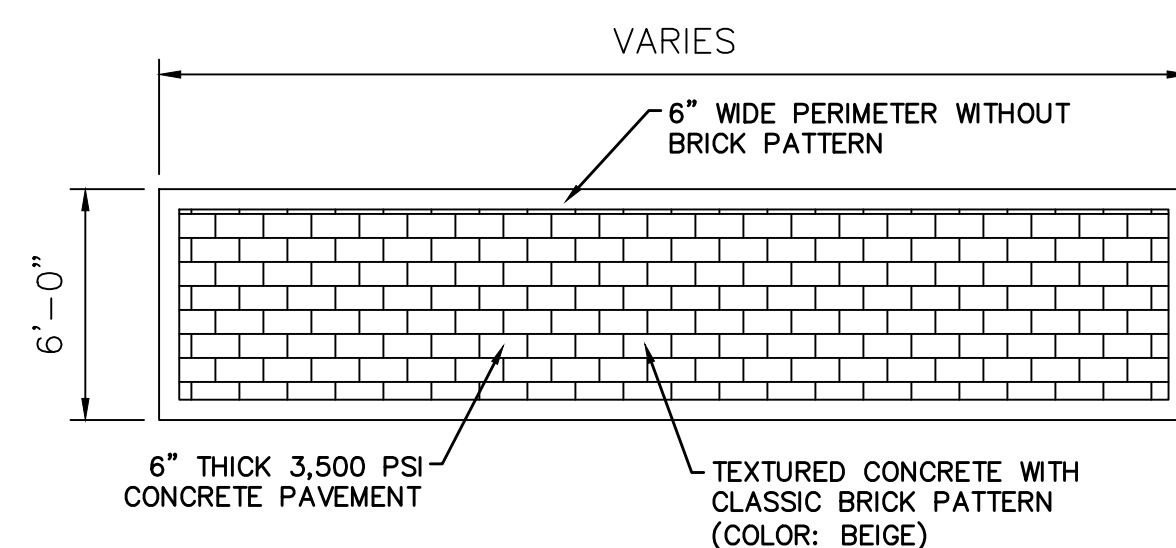


**Pipe Bollard Detail**  
NTS

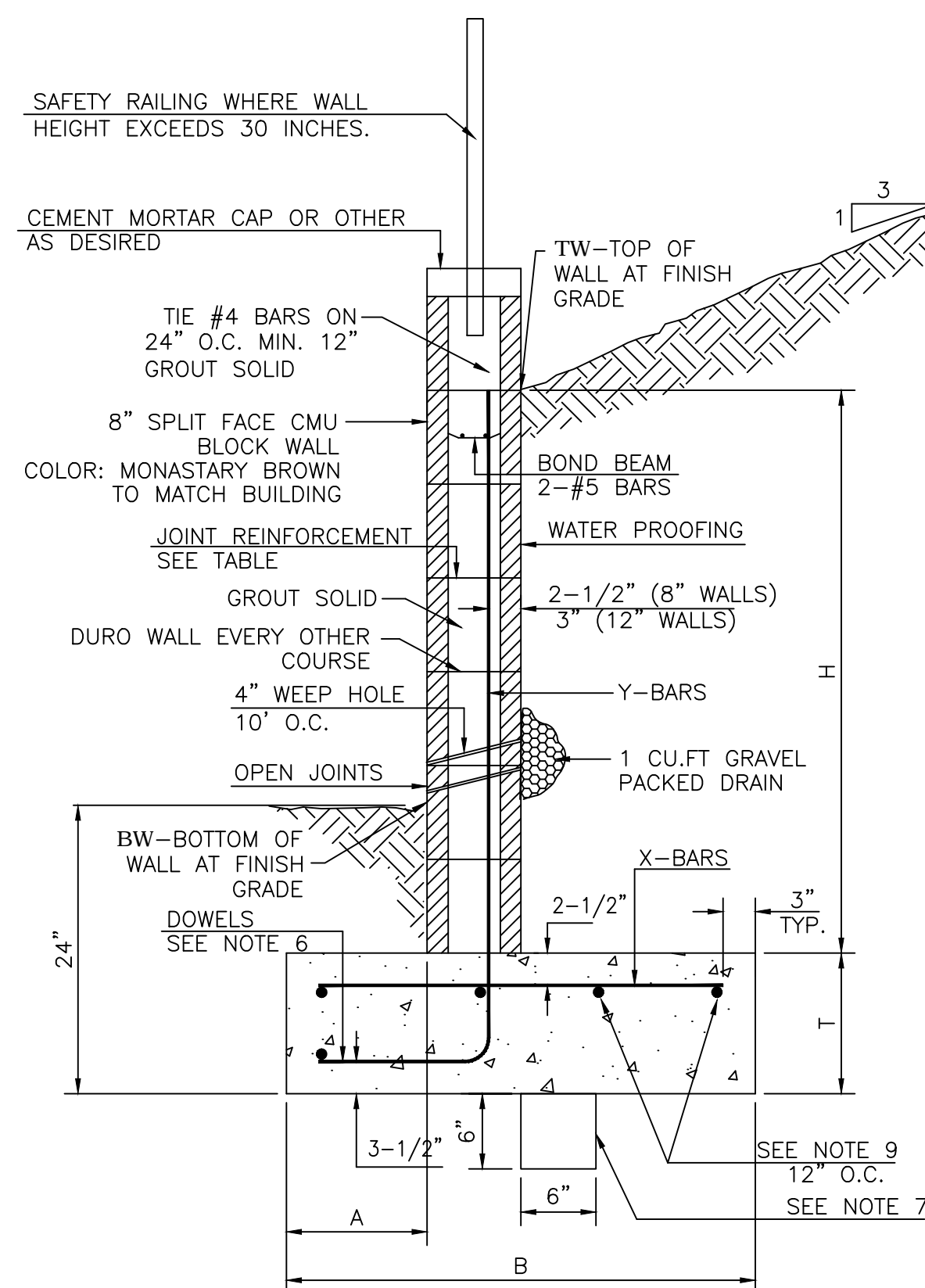


**Project Identification Sign Detail**  
NTS

- NOTES:
- THE PROJECT IDENTIFICATION SIGN SHALL BE FOR THE BOSQUE PLAZA SHOPPING CENTER.
  - SIGN FACE MAY CONTAIN A MAXIMUM OF 10 PANELS.



**Textured Pavement Detail**  
NTS



**Retaining Wall Detail**  
NTS

8 INCH REINFORCED CONCRETE MASONRY WALL

H	A	B	T	Y-BARS	X-BARS
ft.-in.	in.	ft.-in.	in.		
2'-0"	8"	2'-0"	9"	#4 @32" O.C.	
2'-8"	8"	2'-0"	9"	#4 @32" O.C.	#4 @24" O.C.
3'-4"	8"	2'-4"	9"	#4 @32" O.C.	#4 @24" O.C.
4'-0"	10"	2'-8"	9"	#4 @32" O.C.	#4 @24" O.C.
4'-8"	12"	3'-4"	10"	#5 @32" O.C.	#4 @18" O.C.
5'-4"	14"	3'-10"	10"	#6 @16" O.C.	#4 @18" O.C.
6'-0"	16"	4'-8"	12"	#6 @8" O.C.	#4 @12" O.C.

12 INCH REINFORCED CONCRETE MASONRY WALL

H	A	B	T	Y-BARS	X-BARS
ft.-in.	in.	ft.-in.	in.		
5'-4"	14"	3'-8"	10"	#6 @18" O.C.	#4 @24" O.C.
6'-0"	15"	4'-2"	12"	#4 @16" O.C.	#4 @18" O.C.
6'-8"	16"	4'-6"	12"	#6 @24" O.C.	#5 @18" O.C.
7'-4"	18"	4'-10"	12"	#6 @16" O.C.	#5 @18" O.C.
8'-0"	20"	5'-4"	12"	#7 @18" O.C.	#6 @12" O.C.
8'-8"	20"	5'-8"	12"	#7 @16" O.C.	#6 @12" O.C.

GENERAL NOTES:

- ALL CONCRETE IS TO BE 4000 PSI @ 28 DAYS.
- MINIMUM COMPACTION UNDER FOOTINGS IS TO BE 95% PER ASTM. D 1557 FOR A DEPTH OF 12" MOISTURE CONTENT IS TO BE ± 2.0%.
- BACK FILL AGAINST WALLS IS TO BE HAND-PLACED AND COMPACTED.
- ALL BARS ARE TO BE GRADE 60, ASTM 615.
- TRUSS TYPE DUR-O-WALL EVERY OTHER COURSE.
- DOWELS SHALL BE AT LEAST EQUAL IN SIZE AND SPACING TO V-BARS, SHALL PROJECT A MINIMUM OF 30 BAR DIA. INTO THE FILLED BLOCK CORES, AND SHALL EXTEND TO THE TOE OF THE FOOTING.
- PROVIDE KEY FOR 8" AND 12" WALLS WHERE H EXCEEDS 6'-0"
- USE EITHER EXPANSION JOINTS ON 20' CENTERS OR PILASTERS EVERY 16'
- BOND BEAM, 1-#4 BARS FOR WALLS UNDER 3'-4", 2-#4 BARS FOR WALLS UNDER 5'-4", 2-#5 BARS FOR WALLS OVER 5'-4".