

BOSQUE PLAZA

(BEING A REPLAT OF LOTS 1, 2, 3, 4, 5, 6A, 7A, 8 AND 9, LANDS OF MARTIN L. TAYLOR)

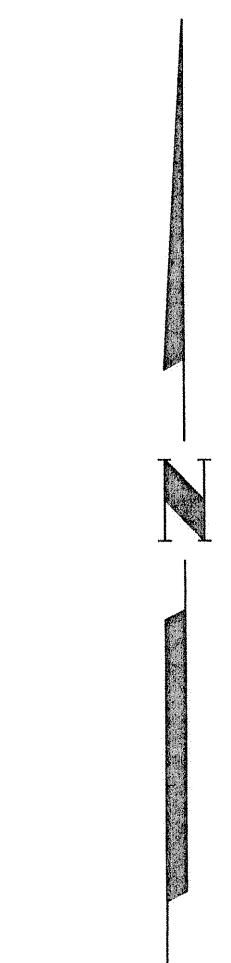
SECTION 25, TOWNSHIP 11 NORTH, RANGE 2 EAST
NEW MEXICO PRINCIPAL MERIDIAN
CITY OF ALBUQUERQUE
BERNALILLO COUNTY, NEW MEXICO

JUNE, 2004

ALBUQUERQUE CITY SURVEY MONUMENT
"NM-448-NB"
New Mexico State Plane Coordinates
Central Zone (NAD27)
Y = 1,514,838.11
X = 372,524.25
Elevation = 5,018.922 (NGVD29)
Delta Alpha = -00'14.44"
G-C=0.99967854

ALBUQUERQUE CITY SURVEY MONUMENT
"HUGHES"
New Mexico State Plane Coordinates
Central Zone (NAD27)
Y = 1,514,316.32
X = 371,688.59
Elevation = 5,049.93 (NGVD29)
Delta Alpha = -00'14.50"
G-C=0.99967726

NEW LOTS AND EASEMENTS
TO BE CREATED



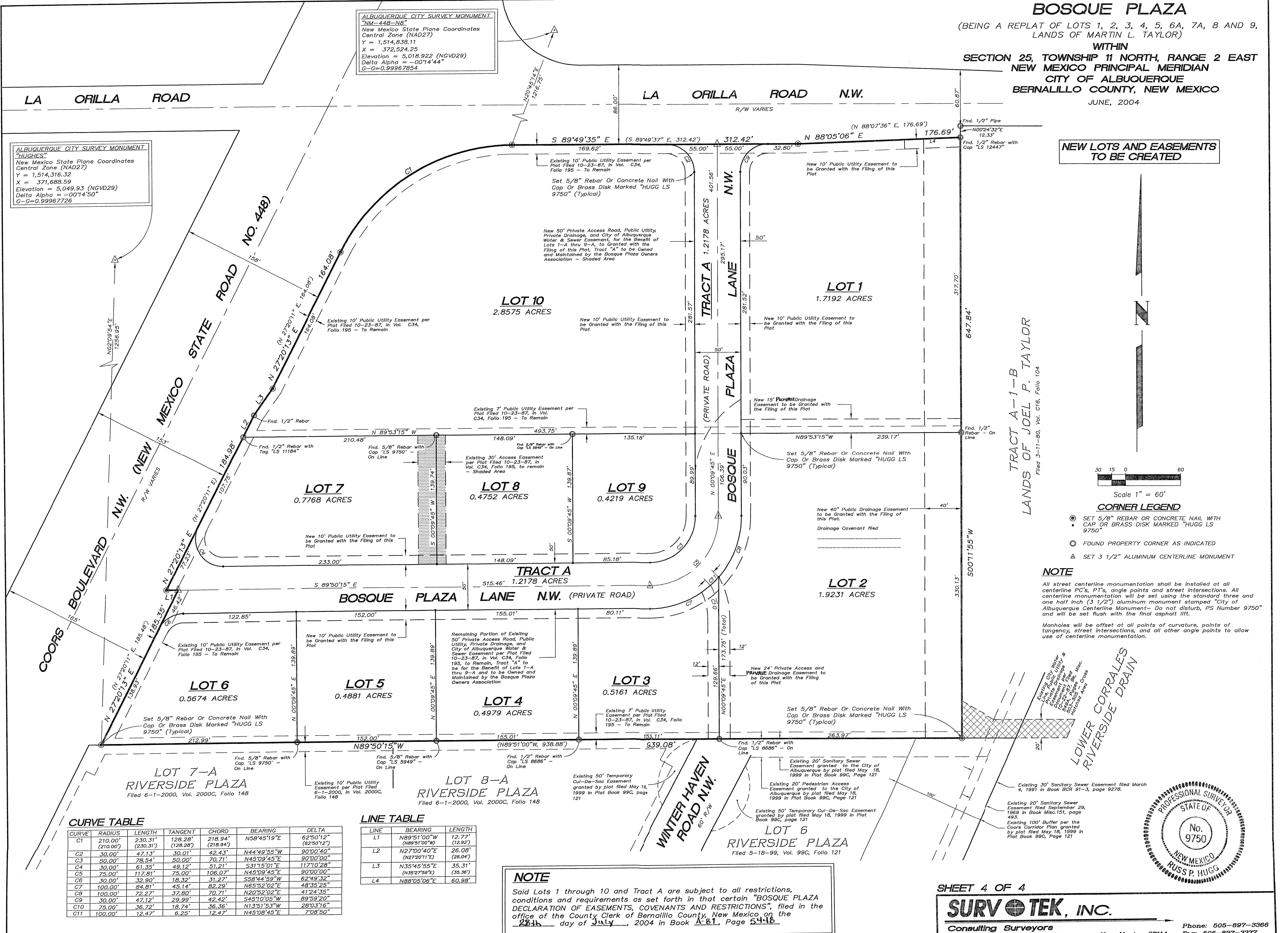
Scale 1" = 60'

CORNER LEGEND

- SET 5/8" REBAR OR CONCRETE NAIL WITH CAP OR BRASS DISK MARKED "HUGG LS 9750"
- FOUND PROPERTY CORNER AS INDICATED
- ▲ SET 3 1/2" ALUMINUM CENTERLINE MONUMENT

NOTE

All street centerline monumentation shall be installed at all centerline PC's, PT's, angle points and street intersections. All centerline monumentation will be set using the standard three and one half inch (3 1/2") aluminum monument stamped "City of Albuquerque Centerline Monument- Do not disturb, PS Number 9750" and will be set flush with the final asphalt lift.
Manholes will be offset at all points of curvature, points of tangency, street intersections, and all other angle points to allow use of centerline monumentation.



CURVE TABLE

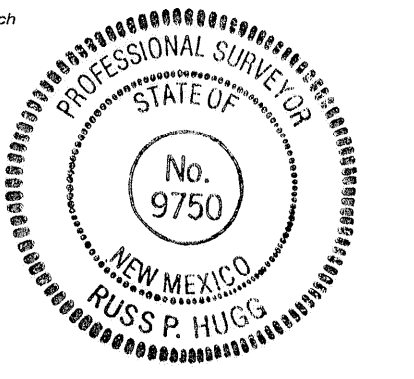
CURVE	RADIUS	LENGTH	TANGENT	CHORD	BEARING	DELTA
C1	210.00' (210.00')	230.31' (230.31')	128.28' (128.28')	218.94' (218.94')	N58°45'19"E	62°50'12" (62°50'12")
C2	30.00'	47.13'	30.01'	42.43'	N44°49'55"W	90°00'40"
C3	50.00'	78.94'	50.00'	70.71'	N45°09'45"E	90°00'00"
C4	75.00'	117.81'	75.00'	51.21'	S31°15'01"E	117°10'28"
C5	75.00'	117.81'	75.00'	106.07'	N45°09'45"E	90°00'00"
C6	30.00'	32.90'	18.32'	31.27'	S58°44'59"W	62°49'32"
C7	100.00'	84.81'	45.14'	82.29'	N65°52'02"E	48°35'25"
C8	100.00'	72.27'	37.80'	70.71'	N20°52'02"E	41°24'35"
C9	30.00'	47.12'	29.99'	42.42'	S45°10'05"W	89°59'20"
C10	75.00'	36.72'	18.74'	36.36'	N13°51'53"W	28°03'16"
C11	100.00'	12.47'	6.25'	12.47'	N45°08'45"E	7°08'50"

LINE TABLE

LINE	BEARING	LENGTH
L1	N89°51'00"W (N89°51'00"W)	12.77' (12.92')
L2	N27°00'40"E (N27°00'40"E)	26.08' (26.04')
L3	N35°45'55"E (N35°45'55"E)	35.31' (35.36')
L4	N88°05'06"E	60.98'

NOTE

Said Lots 1 through 10 and Tract A are subject to all restrictions, conditions and requirements as set forth in that certain "BOSQUE PLAZA DECLARATION OF EASEMENTS, COVENANTS AND RESTRICTIONS", filed in the office of the County Clerk of Bernalillo County, New Mexico on the 28th day of July, 2004 in Book A-81, Page 544b.



SHEET 4 OF 4

SURVOTEK, INC.

Consulting Surveyors
5643 Paradise Blvd. N.W. Albuquerque, New Mexico 87114
Phone: 505-897-3366
Fax: 505-897-3377