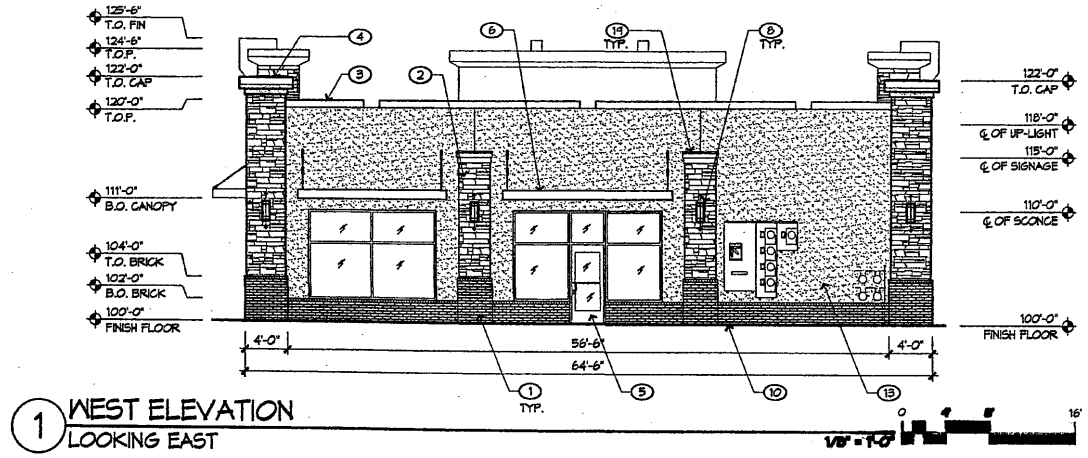


GENERAL NOTES

- BUILDING MOUNTED SIGNS SHALL NOT EXCEED THE ALLOWED SQUARE FOOTAGE AS SPECIFIED IN THE CITY OF ALBUQUERQUE ZONE CODE. ALL SIGNAGE TO COMPLY WITH LOCAL ORDINANCES.

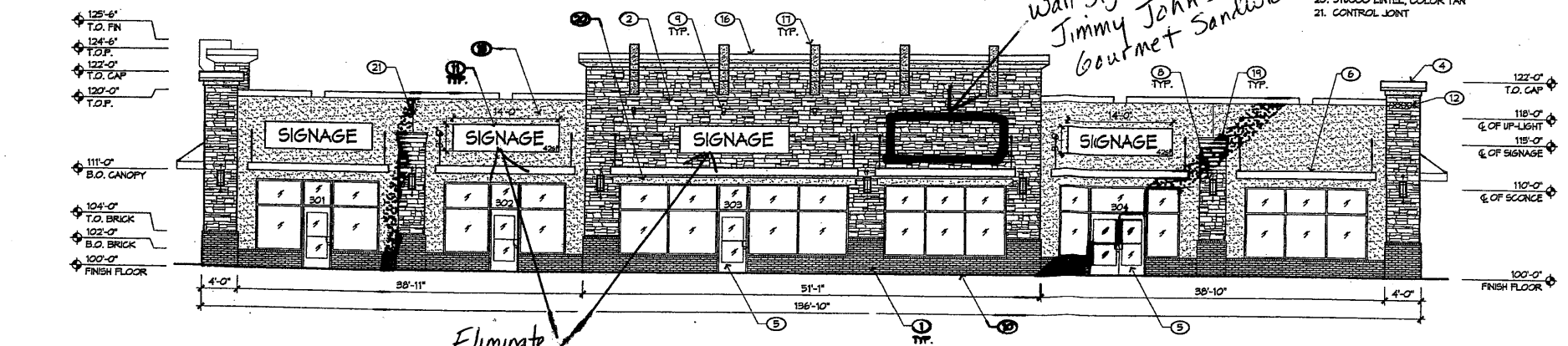
KEYED NOTES

- QUEEN SIZE BRICK, COLOR BROWN
- STACKED STONE VENEER, OVER METAL LATH, WATERPROOF MEMBRANE AND 5/8" SHEATHING, COLOR TAN
- ROOF PARAPET WITH METAL CAP FLASHING, COLOR TO MATCH ADJACENT STUCCO
- CORNER PLASTER WITH METAL CAP, TO MATCH ADJACENT STUCCO
- ALUMINUM STOREFRONT, COLOR
- STEEL CANOPY WITH METAL DECK
- HOLLOW METAL DOOR PAINTED TO MATCH ADJACENT STUCCO
- WALL SCOTCH
- UP-LIGHT
- FINISH FLOOR LINE
- BRIDGE THE SIGN IS TO PROVIDE CONSISTENCY IN APPEARANCE AND QUALITY AND COMPLEMENTS THE VISUAL CHARACTER OF THE DEVELOPMENT. ALL SIGNS SHALL COMPLY WITH SECTION 14-8-8-8 GENERAL SIGN REGULATIONS OF THE CITY OF ALBUQUERQUE. THE SIGN MOUNTED SIGNS SHALL NOT EXCEED 5% PERCENT OF THE FACADE AREA ON WHICH THEY ARE MOUNTED.
- 8" (BRUSHED ALUMINUM) BUILDING ADDRESS IDENTIFICATION NUMBERS
- THO-COAT SYNTHETIC STUCCO SYSTEM, COLOR TAN
- DOWNPOUT/OUTLET, COLOR TO MATCH ADJACENT STUCCO
- DOWNPOUT/OUTLET SLEEVE, COLOR TO MATCH ADJACENT STUCCO
- OVERSIZED PARAPET WITH METAL CAP FLASHING, COLOR TO MATCH ADJACENT STUCCO
- FIN STUCCO PIECE, COLOR TAN
- PRE-CAST CONCRETE CANALE, COLOR TO MATCH STACKED STONE VENEER
- SHORT PLASTER WITH METAL CAP, COLOR TO MATCH ADJACENT STUCCO
- STUCCO LINTEL, COLOR TAN
- CONTROL JOINT



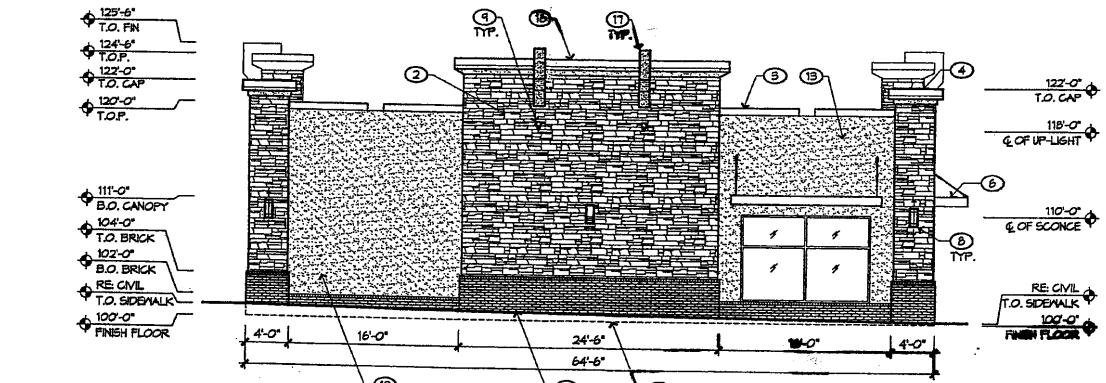
1 WEST ELEVATION
LOOKING EAST

*new 3' x 9' 7 3/4"
wall sign for
Jimmy John's
Gourmet Sandwiches*



2 NORTH ELEVATION
LOOKING SOUTH

*Eliminate
These 2 signs*

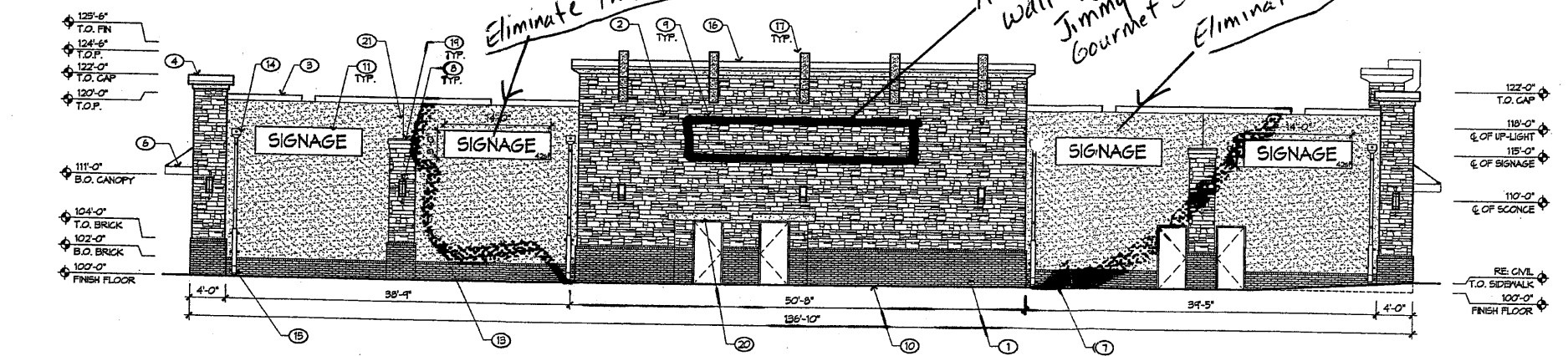


3 EAST ELEVATION
LOOKING WEST

*new 2'6" x 20'
wall sign for
Jimmy John's
Gourmet Sandwiches*

Eliminate this sign

Eliminate this sign



4 SOUTH ELEVATION
LOOKING NORTH

DRB ADMINISTRATIVE
SITE PLAN AMENDMENT

PROJECT NO. 1004246

APPLICATION NO. Sign Amendment

[Signature]
PLANNING DIRECTOR

[Signature]
DATE 7-1-11

ENGINEER

PROJECT

Shops @ Nuevo Paseo
Building "A, B, C and D"
Louisiana and Holly NE
Albuquerque, N.M. 87113

Jimmy John's Gourmet Sandwiches #1712
6650 Holly Ave. NE, Building C, Suite 2
Albuquerque, NM 87109
6/16/2011 AL 360 X

DRAWN BY

REVIEWED BY

DATE

PROJECT NO. 06066

DRAWING NAME

BUILDING C
EXTERIOR
ELEVATIONS

SHEET NO.

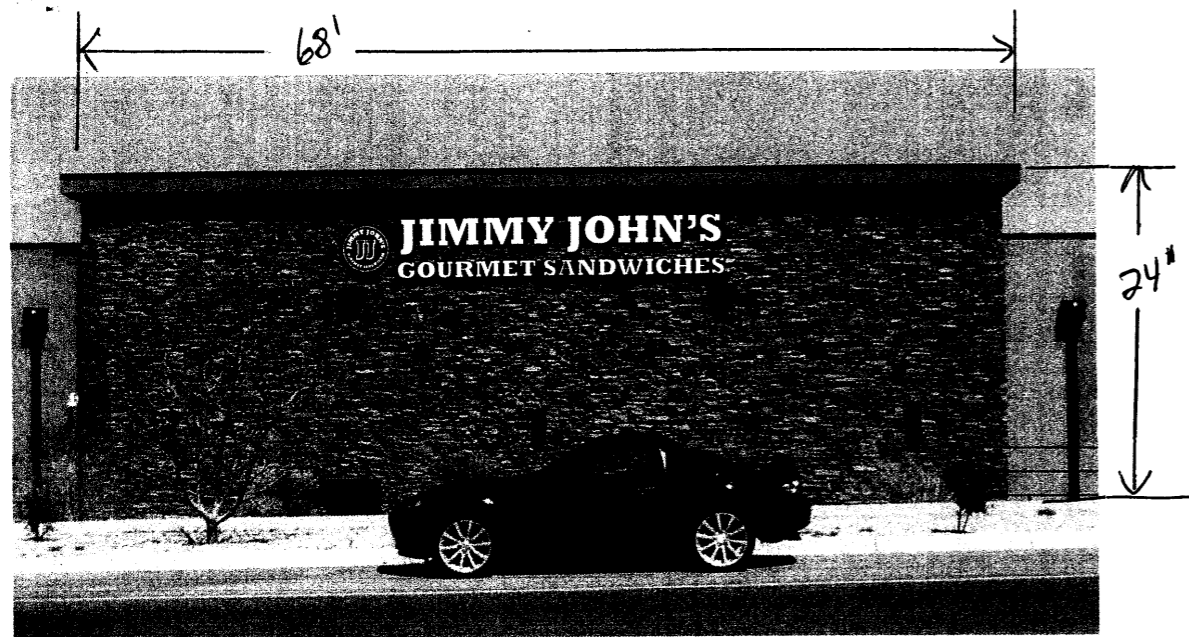
8

ZEON signs

EPNM, INC.
ELECTRICAL PRODUCTS COMPANY

2024 5th ST NW ALBUQUERQUE NM 87102
(505) 243-3771 TOLL FREE 800 444-7407
FAX (505) 243-3575

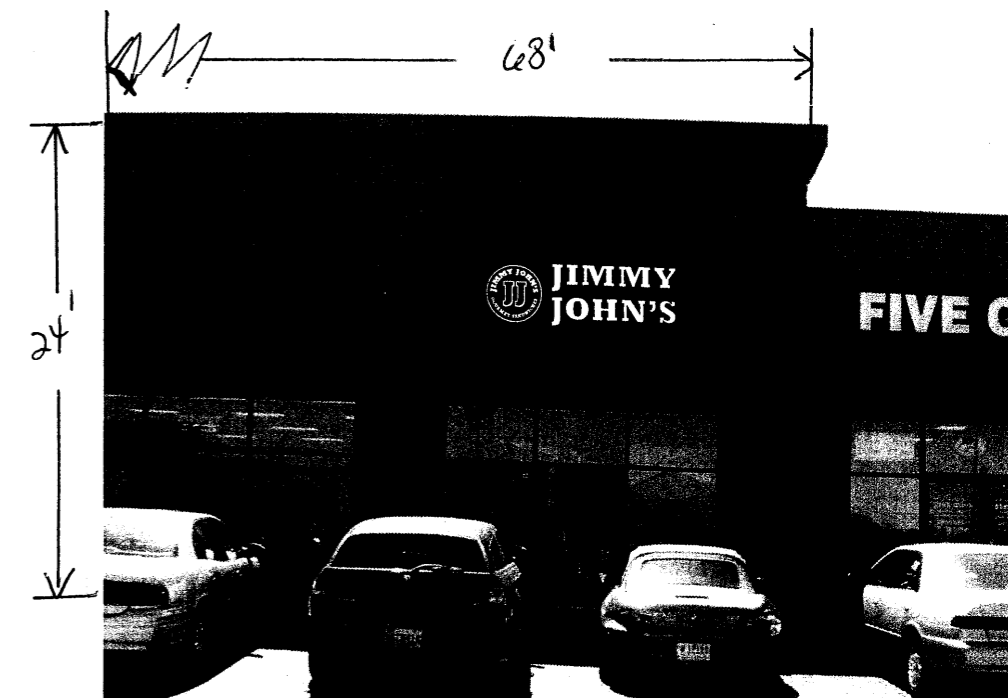
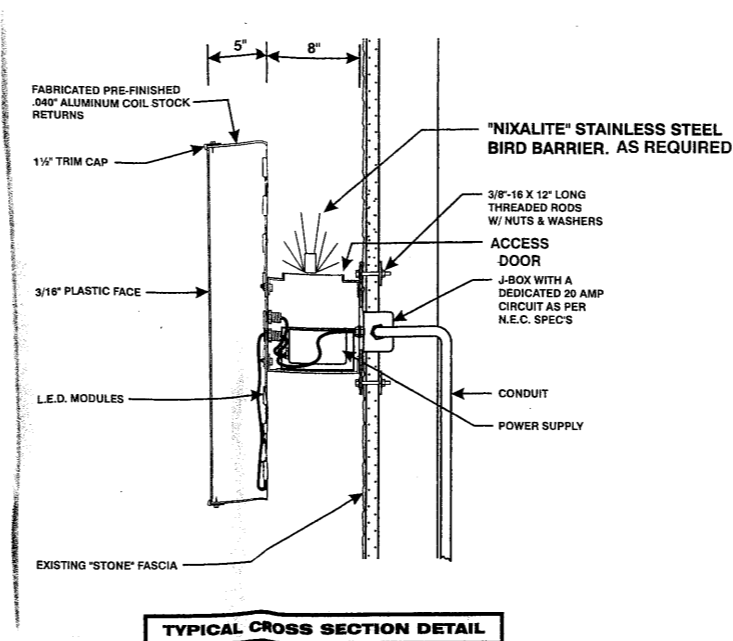
1004246



LOCATION *South Elevation*

NOT TO SCALE

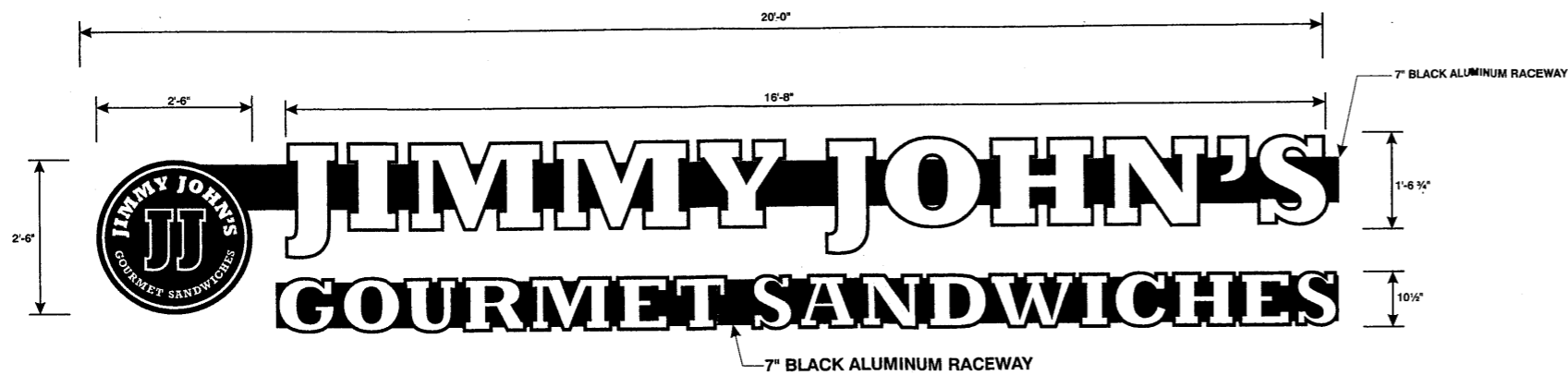
Building Fascia: 1632 ϕ
 Sign: 50 ϕ
 Ratio: 3%



LOCATION *North Elevation*

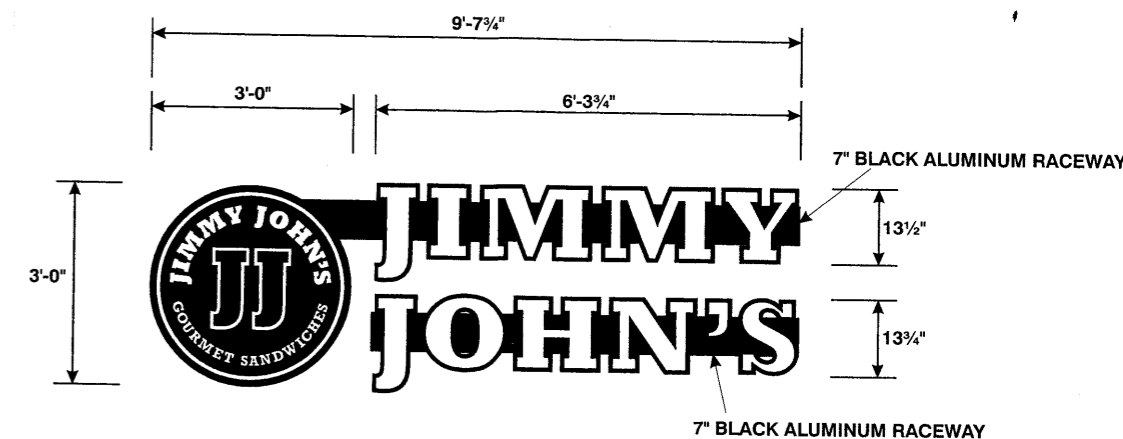
NOT TO SCALE

Building Fascia: 1632 ϕ
 Sign: 28.92 ϕ
 Ratio: 2%



ILLUMINATED CHANNEL LETTERS DISPLAY

- ALUMINUM BACKS W/ 5\"
- LETTERS: WHITE PLEX FACES W/ 1/2\"
- INTERNALLY ILLUMINATED W/ WHITE LED



ILLUMINATED CHANNEL LETTERS DISPLAY

- ALUMINUM BACKS W/ 5\"
- LETTERS: WHITE PLEX FACES W/ 1/2\"
- INTERNALLY ILLUMINATED W/ WHITE LED

Jimmy John's Gourmet Sandwiches #1712
 6650 Holly Ave. NE, Building C, Suite 2
 Albuquerque, NM 87109
 AL 360 X

ZEON SIGNS
EPNM, INC.
 ELECTRICAL PRODUCTS COMPANY
 2024 5th ST NW ALBUQUERQUE NM 87102
 (505) 243-3771 TOLL FREE 800 444-7407
 FAX (505) 243-3575