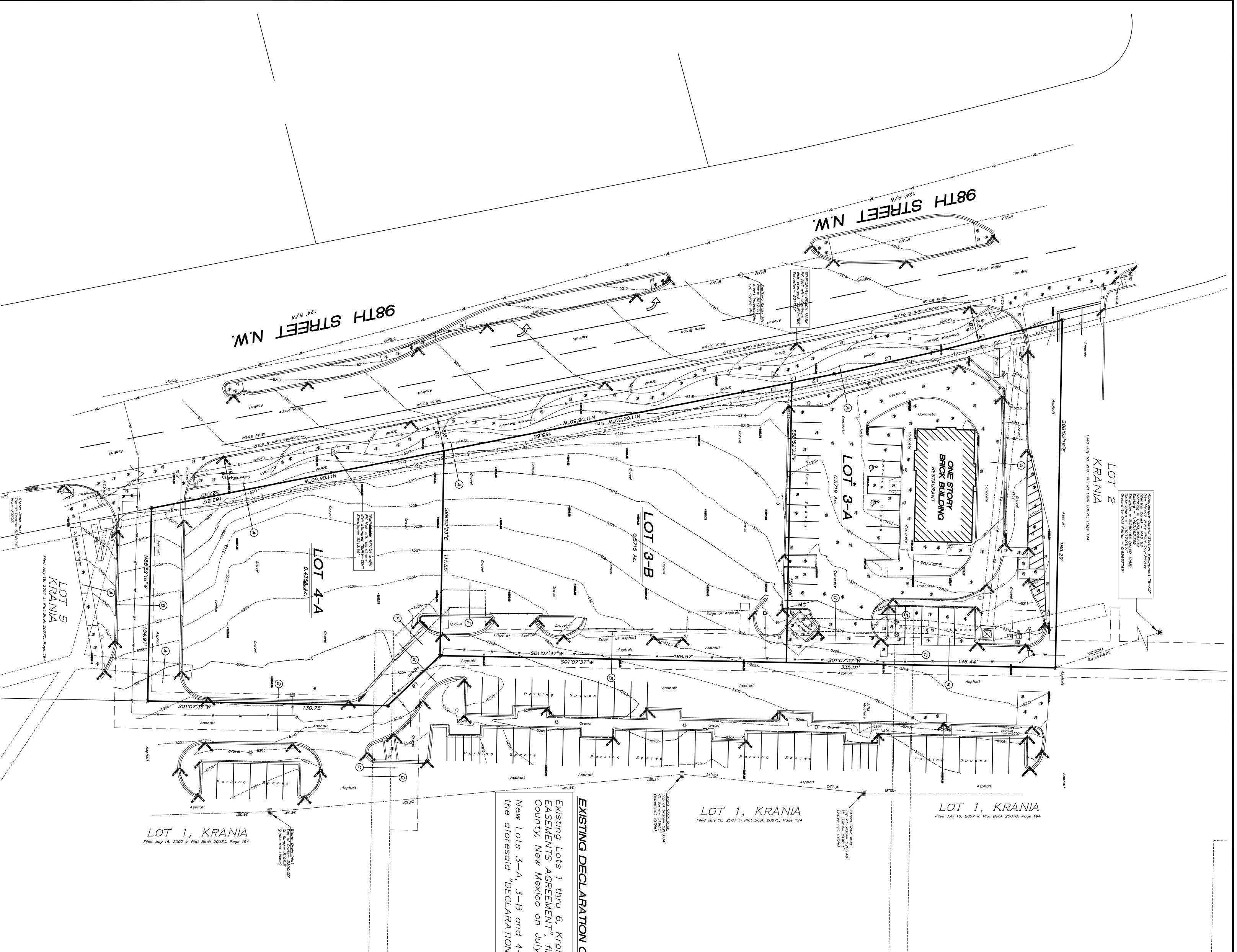


LOTS 3-A, 3-B AND 4-A KRANIA

WITHIN
THE TOWN OF ATRISCO GRANT
IN
PROJECTED SECTION 21, TOWNSHIP 10 NORTH, RANGE 2 EAST
NEW MEXICO PRINCIPAL MERIDIAN
CITY OF ALBUQUERQUE
BERNALILLO COUNTY, NEW MEXICO

OCTOBER 2016



EXISTING DECLARATION OF EASEMENTS:
Existing Lots 1 thru 6, Krania are subject to that certain "DECLARATION OF EASEMENTS AGREEMENT", filed in the office of the County Clerk of Bernalillo County, New Mexico on July 17, 2013 as Document Number 2013078778. New Lots 3-A, 3-B and 4-A, Krania as shown hereon shall be subject to the aforesaid "DECLARATION OF EASEMENTS AGREEMENT".

- EXISTING EASEMENT LEGEND**
- (A) = Existing 7' Public Utility Easement granted by plat filed July 18, 2007 in Plat Book 2007C, Page 194
 - (B) = Existing 20' Public Waterline Easement granted by plat filed July 18, 2007 in Plat Book 2007C, Page 194
 - (C) = Existing 10' Private Sanitary Sewer Easement for the benefit of Lots 3 and 4 to be maintained by same, granted by plat filed July 18, 2007 in Plat Book 2007C, Page 194
 - (D) = Existing 10' Private Cross Lot Drainage, Access and Parking Easement for the benefit of Lots 1 through 6 to be maintained by same, granted by plat filed July 18, 2007 in Plat Book 2007C, Page 194
- NEW EASEMENT LEGEND**
- [E] = Public Water Easement granted to ABCMUA by this plat.
 - [F] = 10' Private Sanitary Sewer Easement for the benefit of Lot 3-B to be maintained by same, granted by this plat.
 - [G] = 7' Public Utility Easement granted by this plat.

LINE TABLE

LINE	LENGTH	BEARING
L1	39.34	S43°52'23"E
L2	50.74	N11°05'36"W
L3	54.21	N12°29'27"W
L4	51.69	N13°57'01"W
L5	21.70	N13°57'59"W
L6	35.82	S46°08'38"E
L7	19.19	S01°07'37"W
L8	43.34	S43°52'23"E
L9	13.57	N88°52'23"W
L10	37.72	N43°52'23"W
L11	23.16	N01°07'37"E
L12	9.59	S88°52'23"E
L13	55.82	S14°26'56"E
L14	15.67	N88°52'23"W
L15	5.12	N01°07'37"E
L16	15.67	S88°52'23"E
L17	5.12	S01°07'37"W
L18	17.26	N88°52'23"W
L19	76.38	N01°07'37"E

