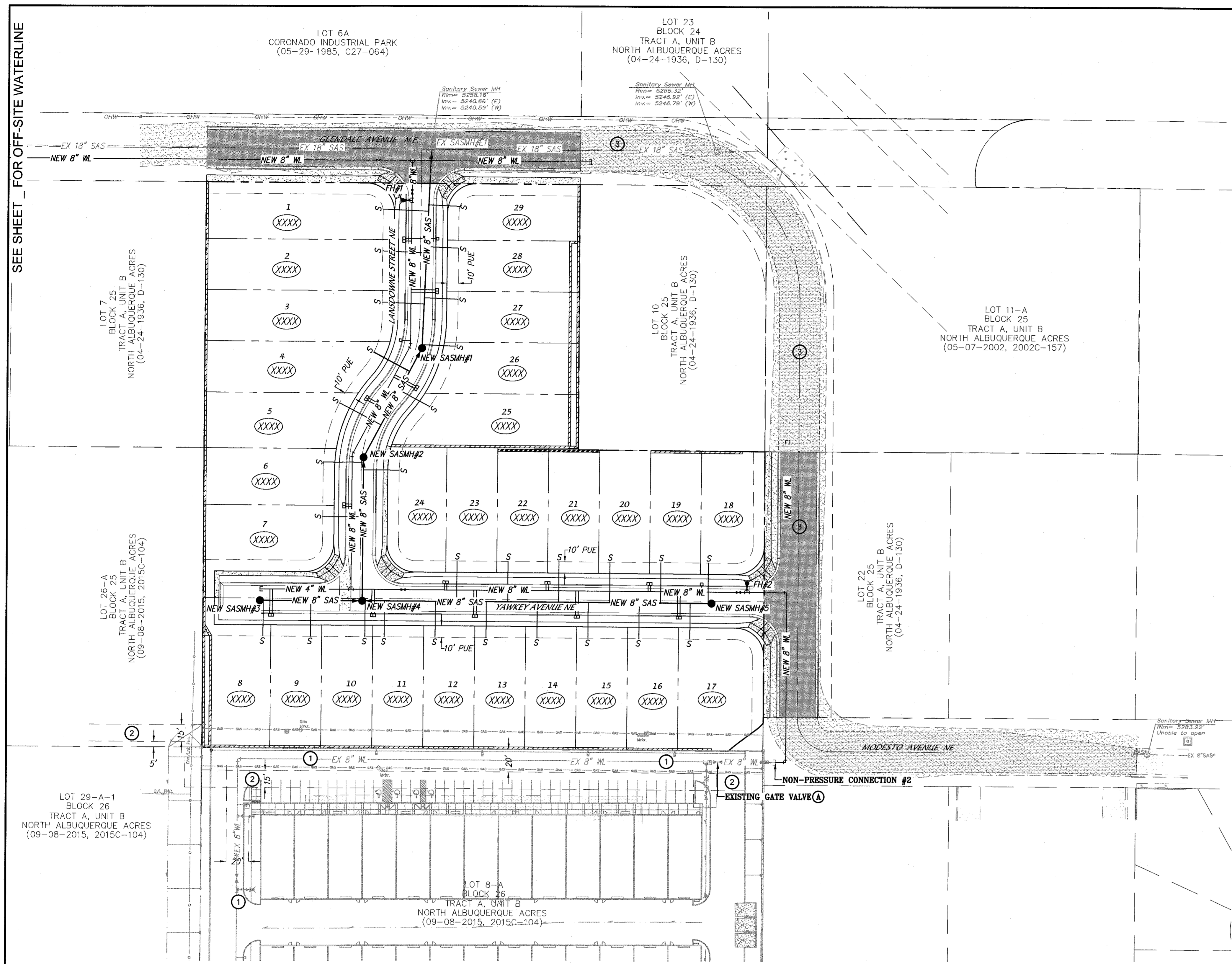


SEE SHEET FOR OFF-SITE WATERLINE



LEGEND

[Symbol]	EXISTING ASPHALT PAVEMENT
[Symbol]	EXISTING ELECTRIC TRANSFORMER
[Symbol]	EXISTING OVERHEAD ELECTRIC LINE
[Symbol]	EXISTING POWER POLE
[Symbol]	EXISTING LIGHT POLE
[Symbol]	EXISTING TRAFFIC SIGNAL PULLBOX
[Symbol]	EXISTING CATV PEDESTAL
[Symbol]	EXISTING UTILITY PEDESTAL
[Symbol]	EXISTING DROP INLET
[Symbol]	EXISTING STORM DRAIN
[Symbol]	EXISTING STORM DRAIN MANHOLE
[Symbol]	EXISTING SANITARY SEWER MANHOLE
[Symbol]	EXISTING SANITARY SEWER LINE
[Symbol]	EXISTING WATER LINE
[Symbol]	EXISTING GATE VALVE & BOX
[Symbol]	EXISTING FIRE HYDRANT
[Symbol]	NEW RIGHT-OF-WAY
[Symbol]	NEW CENTERLINE
[Symbol]	NEW LOT LINES
[Symbol]	NEW EASEMENTS
[Symbol]	NEW STORM DRAIN INLET
[Symbol]	NEW STORM DRAIN
[Symbol]	NEW STORM DRAIN MANHOLE
[Symbol]	NEW SANITARY SEWER LINE
[Symbol]	NEW SANITARY SEWER MANHOLE
[Symbol]	NEW SANITARY SEWER FLOW DIRECTION
[Symbol]	NEW SANITARY SEWER SERVICE LINE
[Symbol]	NEW WATERLINE
[Symbol]	NEW FIRE HYDRANT
[Symbol]	NEW GATE VALVE & BOX
[Symbol]	NEW WATERLINE TEE
[Symbol]	NEW WATERLINE CAP
[Symbol]	NEW WATERLINE BEND
[Symbol]	NEW WATER METER SERVICES *
[Symbol]	NEW STREET LIGHT
[Symbol]	NEW LOT ADDRESS

AS-BUILT INFORMATION	
CONTRACTOR	DATE
WORK PERFORMED BY	DATE
INSPECTOR'S ACCEPTANCE BY	DATE
VERIFICATION BY	DATE
DRAWINGS	DATE
ISSUED BY	DATE
MICRO-FILM INFORMATION	DATE
RECORDED BY	NO.

BENCH MARKS	
AGRS Brass Cap stamped "10-C18"	DATE
Elevation, in feet (MAD88)-5222.000	DATE

SURVEY INFORMATION	
FIELD NOTES	DATE
NO.	DATE

ENGINEER'S SEAL	
NO.	DATE
REMARKS	BY
REVISIONS	DATE
DESIGN	DATE
DESIGNED BY DLH	DATE 06/16
DRAWN BY DER	DATE 06/16
CHECKED BY DMG	DATE 06/16

- NOTES**
1. ALL FIRE HYDRANTS ARE 4' BURY UNLESS OTHERWISE SPECIFIED.
 2. ALL METER BOXES ADJACENT TO MOUNTABLE CURB SHALL HAVE DUCTILE IRON METER BOX COVER & LID PER ABCWUA STD. DWG 2368; WATER METER BOX PER ABCWUA STD. DWG #2366; WATER SERVICE PER ABCWUA STD. DWG #2362.
 3. ALL FIRE HYDRANTS PER ABCWUA STD. 2340.
 4. ALL FIRE HYDRANTS TO HAVE A 6" GATE VALVE & BOX PER ABCWUA STD. DWG #2326; CONTRACTOR TO USE POLY COATED CAP FOR VALVE BOXES.
 5. CONTRACTOR IS NOT TO INSTALL THE STEPS IN THE SAS MANHOLES.
 6. ALL SANITARY SEWER MANHOLES PER ABCWUA STD. DWG #2101, #2107 AND #2109.

RESTRAINED JOINT LENGTH FOR TEES (FT.)

PIPE SIZE	RUN	BRANCH
8"x8"x8"	13'	3'
8"x8"x6"	7'	5'

RESTRAINED JOINT LENGTH FOR BENDS, VALVES, DEAD ENDS (FT.)

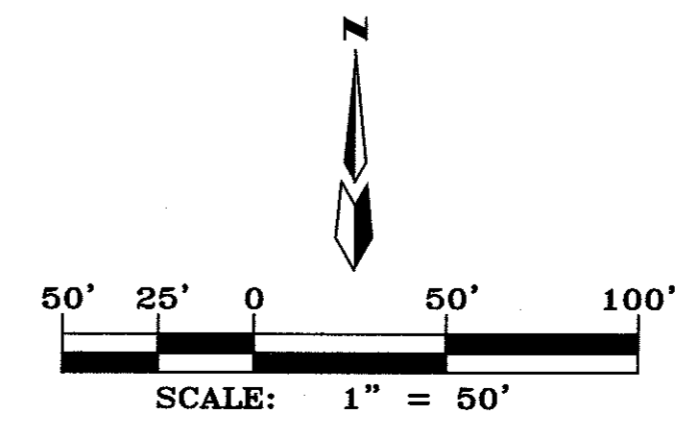
PIPE SIZE	90°	45°	22.5°	11.25°	VALVE
12"	30'	12'	6'	3'	85'
8"	22'	9'	4'	2'	60'
6"	17'	7'	3'	2'	46'
4"	12'	5'	2'	1'	32'

- WATER SHUT-OFF PLAN**
1. CONTRACTOR SHALL MAKE SHUT OFF REQUEST ONLINE AT <http://abcwua.org/content/view/full/463/729/>.
 2. VALVES SHALL ONLY BE OPERATED BY WATER AUTHORITY EMPLOYEES.
 3. FOR PRESSURE CONNECTION #1, ON SAN PEDRO, SHUT-OFF GATE VALVES "B", "C" & "D".
 4. FOR NON-PRESSURE CONNECTION #2, SHUT-OFF EXISTING GATE VALVE "A".

RESTRAINED JOINT LENGTHS FOR REDUCERS (FT.)

PIPE SIZE	LARGE SIDE	SMALL SIDE
12" X 8"	45'	68'
8" X 6"	25'	33'

LENGTH OF RESTRAINED PIPE ON EACH SIDE OF THE BEND. RESTRAIN BRANCH AT FITTING ONLY MINIMUM ATTACHED PIPE LENGTH, RUN SIDE OF TEE: 10.00 FEET.



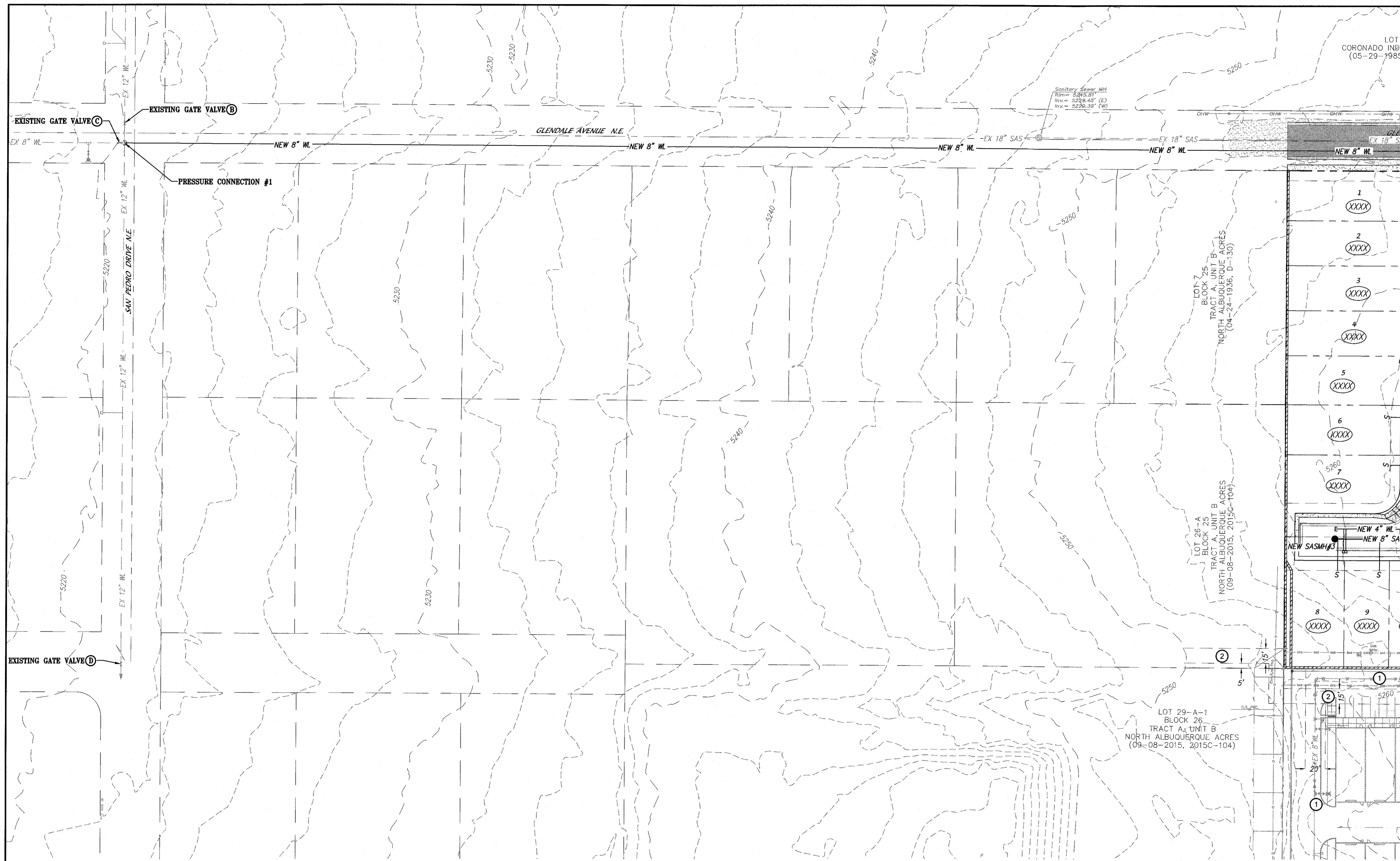
dmg MARK GOODWIN & ASSOCIATES, P.A.
CONSULTING ENGINEERS
P.O. BOX 90606
ALBUQUERQUE, NEW MEXICO 87199
OFFICE (505) 828-2200, FAX (505) 797-9539

**CITY OF ALBUQUERQUE
PUBLIC WORKS DEPARTMENT**

TITLE: **GLENDесто SUBDIVISION
MASTER UTILITY PLAN**

DESIGN REVIEW COMMITTEE	CITY ENGINEER APPROVAL	MO./DAY/YR.	MO./DAY/YR.

CITY PROJECT NO. _____ ZONE MAP NO. **B-18-Z** SHEET **5** OF **X**



SEE SHEET _ FOR ON-SITE UTILITIES

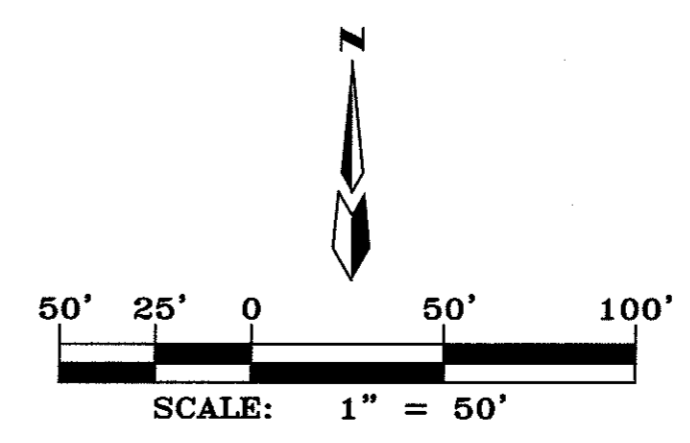
dmg MARK GOODWIN & ASSOCIATES, P.A.
 CONSULTING ENGINEERS
 P.O. BOX 90606
 ALBUQUERQUE, NEW MEXICO 87199
 OFFICE (505) 828-2200, FAX (505) 797-9539

**CITY OF ALBUQUERQUE
 PUBLIC WORKS DEPARTMENT**

TITLE: **GLEDESTO SUBDIVISION
 MASTER UTILITY PLAN**

DESIGN REVIEW COMMITTEE	CITY ENGINEER APPROVAL	MO./DAY/YR.	MO./DAY/YR.
LAST DESIGN UPDATE			

CITY PROJECT NO. _____ ZONE MAP NO. **B-18-Z** SHEET OF **5B X**



AS BUILT INFORMATION	
CONTRACTOR	DATE
WORKED BY	DATE
INSPECTOR'S ACCEPTANCE BY	DATE
VEGETATION BY	DATE
DRAWINGS CORRECTED BY	DATE
MICRO-FILM INFORMATION	
RECORDED BY	DATE
NO.	

BENCH MARKS	
NO.	DATE
AGRS Brass Cap stamped "10-C18" Elevation, in feet (NAD83)-5222.080	
1	XXXX
2	XXXX
3	XXXX
4	XXXX
5	XXXX
6	XXXX
7	XXXX
8	XXXX
9	XXXX

SURVEY INFORMATION	
FIELD NOTES	DATE
NO.	BY

ENGINEER'S SEAL	
NO.	DATE

REVISIONS	
NO.	DATE
1	06/16
2	06/16
3	06/16