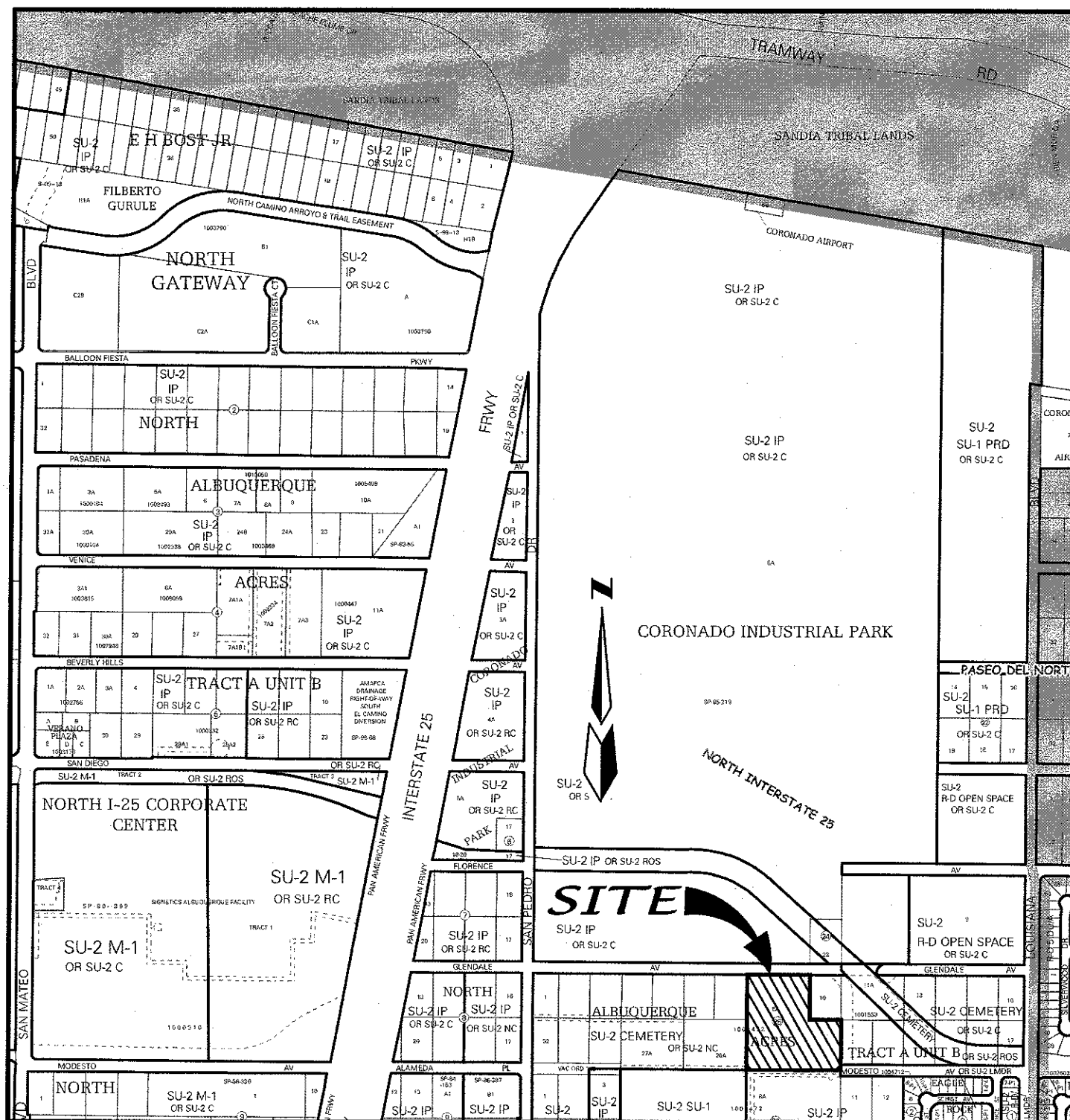


SKETCH PLAT
 GLENDESTO SUBDIVISION
 WITHIN
 PROJECTED SECTION 12 AND 13
 TOWNSHIP 11 NORTH, RANGE 3 EAST, NMPM
 ELENA GALLEGOS GRANT
 CITY OF ALBUQUERQUE
 BERNALILLO COUNTY, NEW MEXICO
 APRIL, 2016



VICINITY MAP (NTS) ZONE ATLAS MAP B-18

LEGAL DESCRIPTION

TRACT OF LAND SITUATE WITHIN PROJECT SECTIONS 12 AND 13, TOWNSHIP 11 NORTH, RANGE 3 EAST, NEW MEXICO PRINCIPAL MERIDIAN, THE ELENA GALLEGOS GRANT, CITY OF ALBUQUERQUE, BERNALILLO COUNTY, NEW MEXICO BEING ALL OF LOT 8-A, BLOCK 25, TRACT A, UNIT B, NORTH ALBUQUERQUE ACRES AS THE SAME IS SHOWN AND DESIGNATED ON SAID PLAT FILED FOR RECORD IN THE OFFICE OF THE COUNTY CLERK OF BERNALILLO COUNTY, NEW MEXICO ON SEPTEMBER 08, 2015 IN BOOK 2015C, PAGE 104 AND CONTAINS 4.7683 ACRES MORE OR LESS.

SUBDIVISION DATA

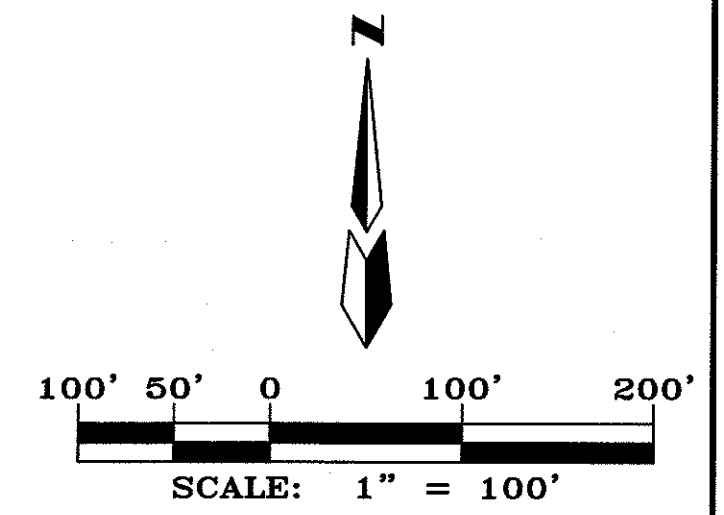
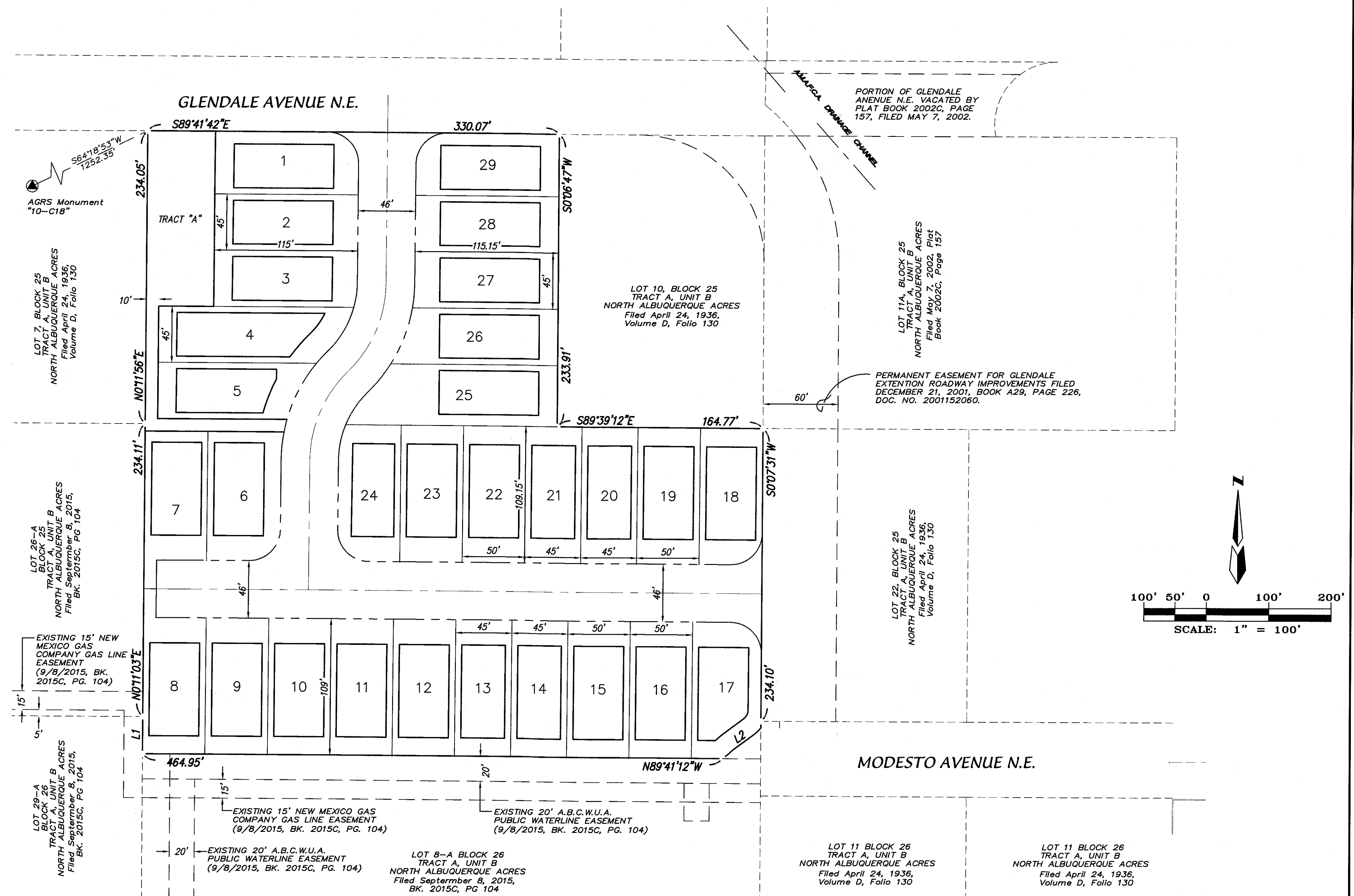
GROSS ACREAGE	4.7683 Ac.
ZONE ATLAS NO.	B-18-Z
NO. OF LOTS CREATED	29 LOTS

PURPOSE OF PLAT

- SUBDIVIDE LOT "8-A" BLOCK 25, TRACT A, UNIT B, NORTH ALBUQUERQUE ACRES INTO 29 RESIDENTIAL LOTS.
- DEDICATE RIGHT-OF-WAY AS SHOWN.
- GRANT NEW EASEMENTS AS SHOWN.

SITE BENCHMARK

AGRS MONUMENT
 "10-C18"
 ELEVATION=5222.090
 (NAVD 1988)



ENGINEERS	SURVEYOR	OWNERS
D. MARK GOODWIN & ASSOCIATES, P.A. CONSULTING ENGINEERS P.O. BOX 90606 ALBUQUERQUE, N.M. 87199 (505) 828-2200	ALDRICH LAND SURVEY P.O. BOX 30701 ALBUQUERQUE, N.M. 87190-0701 (505) 884-1990	DOUBLE EAGLE REAL ESTATE 5600 EUBANK BLVD NE ALBUQUERQUE, N.M. 87111 (505) 883-1414

dmg MARK GOODWIN & ASSOCIATES, P.A.
 CONSULTING ENGINEERS
 P.O. BOX 90606
 ALBUQUERQUE, NEW MEXICO 87199
 (505) 828-2200, FAX (505) 797-9539

Designed: DMG	Drawn: SPS	Checked: DMG	Sheet 1 of 1
Scale: 1" = 50'	Date: 4/28/2016	Job: A16006	