

94C-334(2)

94C-334(2)

NOTES CONT.

94120549

DOCUMENTS USED TO DETERMINE BOUNDARY

- 1.) SUBDIVISION PLAT ENTITLED "TRACT A-UNIT B NORTH ALBUQUERQUE ACRES" FILED: 1936, VOL. D, FOLIO 130.
- 2.) PLAT ENTITLED "CITY OF ALBUQUERQUE FIRE STATION SITE NUMBER 19" FILED: JAN. 6, 1983, VOL. C20, FOLIO 137.
- 3.) PLAT ENTITLED "SUMMARY PLAT LOTS 32-A & 32-B, BLOCK 30, TRACT A, UNIT B OF NORTH ALBUQUERQUE ACRES" FILED: DEC. 15, 1980, VOL. C17, FOLIO 162.

11. PUBLIC WATER, SEWER AND DRAINAGE EASEMENTS -
 DECLARANT HEREBY GRANTS PERPETUAL, NONEXCLUSIVE EASEMENTS FOR THE BENEFIT OF THE DECLARANT OR ITS DESIGNEES, UPON, ACROSS, OVER, THROUGH AND UNDER ANY PORTION OF THE LOTS DESIGNATED ON THIS PLAT AS AREAS FOR PUBLIC WATER, PUBLIC SEWER AND PUBLIC DRAINAGE EASEMENTS FOR THE PURPOSE OF INTERFESS, EGRESS, INSTALLATION, REPLACEMENT REPAIR, MAINTENANCE, TRIMMING OR REMOVING OF INTERFERING TREES OR SHRUBS, USE AND OPERATION OF ALL PUBLIC UTILITIES.

NO RESIDENCE, OBSTACLE OR OTHER TYPE OF CONSTRUCTION SHALL BE ERRECTED, PLACED ALTERED OR PERMITTED TO REMAIN UPON ANY LOT WHICH IS SUBJECT TO A PUBLIC WATER, PUBLIC SEWER OR PUBLIC DRAINAGE EASEMENT WHICH WOULD IN ANY WAY INTERFERE WITH THE USE OF SUCH EASEMENT; NOR SHALL ANY TREE BE PLANTED WHICH WOULD INTERFERE WITH THE INTENDED USE OF THE UTILITY.

SONORA SUBDIVISION
 FORMERLY LOTS 9 THRU 24 INCLUSIVE
 TRACT A, UNIT B, BLOCK 30
 NORTH ALBUQUERQUE ACRES

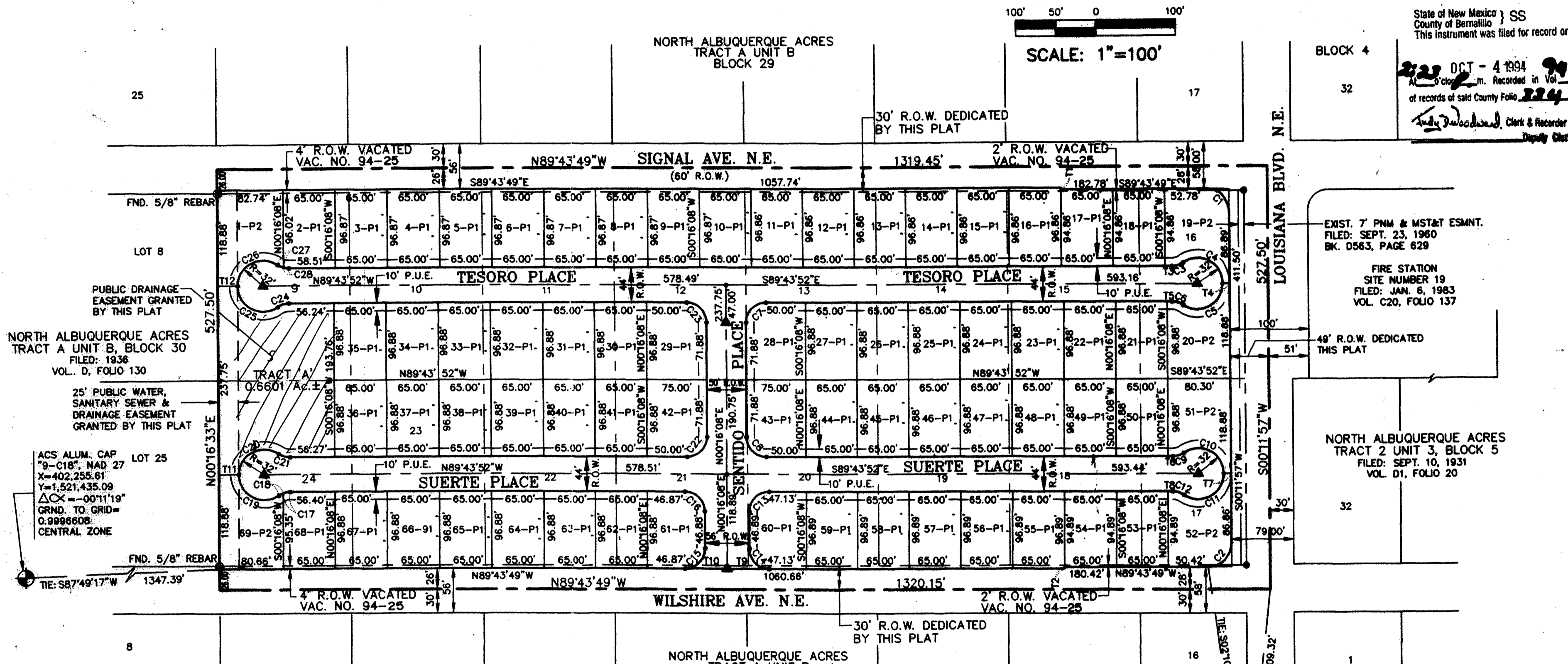
ELENA GALLEGOS GRANT
 BERNALILLO COUNTY
 ALBUQUERQUE, NEW MEXICO
 JULY, 1994

State of New Mexico } SS
 County of Bernalillo
 This instrument was filed for record on

223 OCT - 4 1994
 of records of said County Folio 224
 Clerk & Recorder
 Deputy Clerk

LOT AREAS

LOT NO.	ACRES±
1-P2	0.1905
2-P1	0.1445
3-P1	0.1446
4-P1	0.1446
5-P1	0.1445
6-P1	0.1445
7-P1	0.1445
8-P1	0.1445
9-P1	0.1445
10-P1	0.1445
11-P1	0.1445
12-P1	0.1445
13-P1	0.1445
14-P1	0.1445
15-P1	0.1445
16-P1	0.1445
17-P1	0.1415
18-P1	0.1415
19-P2	0.1748
20-P2	0.1773
21-P1	0.1446
22-P1	0.1446
23-P1	0.1446
24-P1	0.1446
25-P1	0.1446
26-P1	0.1446
27-P1	0.1446
28-P1	0.1837
29-P1	0.1837
30-P1	0.1446
31-P1	0.1446
32-P1	0.1446
33-P1	0.1446
34-P1	0.1446
35-P1	0.1446
36-P1	0.1446
37-P1	0.1446
38-P1	0.1446
39-P1	0.1446
40-P1	0.1446
41-P1	0.1446
42-P1	0.1837
43-P1	0.1837
44-P1	0.1446
45-P1	0.1446
46-P1	0.1446
47-P1	0.1446
48-P1	0.1446
49-P1	0.1446
50-P1	0.1446
51-P2	0.1776
52-P2	0.1898
53-P1	0.1416
54-P1	0.1416
55-P1	0.1446
56-P1	0.1446
57-P1	0.1446
58-P1	0.1446
59-P1	0.1446
60-P1	0.1543
61-P1	0.1837
62-P1	0.1446
63-P1	0.1446
64-P1	0.1446
65-P1	0.1446
66-P1	0.1446
67-P1	0.1446
68-P1	0.1445
69-P2	0.1858
TRACT A'	0.8801



CURVE DATA

CURVE	RADIUS	LENGTH	TANGENT	CHORD	BEARING	DELTA
C1	30.00'	47.09'	29.96'	42.40'	S44°45'56"E	89°58'46"
C2	30.00'	47.16'	30.04'	42.45'	S45°14'04"W	90°04'14"
C3	25.00'	15.03'	7.75'	14.81'	S73°02'27"W	34°27'21"
C4	32.00'	69.51'	60.77'	56.63'	N61°57'33"W	124°27'21"
C5	32.00'	69.51'	60.77'	56.63'	N62°29'48"E	124°27'21"
C6	25.00'	15.03'	7.75'	14.81'	S72°30'12"E	34°27'21"
C7	25.00'	39.27'	25.00'	35.36'	N45°16'08"E	90°00'00"
C8	25.00'	39.27'	25.00'	35.36'	N44°43'52"W	90°00'00"
C9	25.00'	15.03'	7.75'	14.81'	S73°02'27"W	34°27'21"
C10	32.00'	69.51'	60.77'	56.63'	N61°57'33"W	124°27'21"
C11	32.00'	69.51'	60.77'	56.63'	N62°29'48"E	124°27'21"
C12	25.00'	15.03'	7.75'	14.81'	S72°30'12"E	34°27'21"
C13	25.00'	39.27'	25.00'	35.36'	N45°16'08"E	90°00'00"
C14	25.00'	39.27'	25.00'	35.36'	N44°43'51"W	89°59'57"
C15	25.00'	39.27'	25.00'	35.36'	S45°16'09"W	90°00'03"
C16	25.00'	39.27'	25.00'	35.36'	S44°43'52"E	90°00'00"
C17	25.00'	8.78'	4.44'	8.74'	N80°12'10"E	20°07'56"
C18	25.00'	8.25'	3.14'	8.23'	N62°58'29"E	14°19'25"
C19	32.00'	69.51'	60.77'	56.63'	S61°57'33"E	124°27'21"
C20	32.00'	69.51'	60.77'	56.63'	S62°29'48"W	124°27'21"
C21	25.00'	15.03'	7.75'	14.81'	N72°30'12"W	34°27'21"
C22	25.00'	39.27'	25.00'	35.36'	S45°16'08"W	90°00'00"
C23	25.00'	39.27'	25.00'	35.36'	S44°43'52"E	90°00'00"
C24	25.00'	15.03'	7.75'	14.81'	N73°02'27"E	34°27'21"
C25	32.00'	69.51'	60.77'	56.63'	S61°57'33"E	124°27'21"
C26	32.00'	69.51'	60.77'	56.63'	S62°29'48"W	124°27'21"
C27	25.00'	8.46'	4.27'	8.42'	N64°58'30"W	19°23'58"
C28	25.00'	6.57'	3.30'	6.55'	N82°12'10"W	15°03'24"

TANGENT DATA

LINE	DIRECTION	DISTANCE
T1	S00°16'08"W	2.00'
T2	S00°16'08"W	2.00'
T3	N89°43'52"W	8.64'
T4	N89°43'52"W	10.00'
T5	N89°43'52"W	5.91'
T6	N89°43'52"W	6.19'
T7	N89°43'52"W	10.00'
T8	S89°43'52"E	6.06'
T9	N89°43'49"W	53.00'
T10	N89°43'49"W	53.00'
T11	S89°43'52"E	25.00'
T12	N89°43'52"W	25.00'

LEGEND

- DENOTES ORIGINAL LOT LINES, LOTS 9 THROUGH 24, BLOCK 30, TRACT A UNIT B NORTH ALBUQUERQUE ACRES
- - - DENOTES BOUNDARY SONORA SUBDIVISION
- - - DENOTES EASEMENT GRANTED

ACS ALUM. CAP
 "1-C19", NAD 27
 X=404,941.91
 Y=1,518,845.74
 ΔCX = -0°11'00"
 GRND. TO GRID =
 0.99965598
 CENTRAL ZONE

DATE: JULY 22, 1994
 AVID JOB No. 4008.470

AVID ENGINEERING, INC.
 Civil • Structural • Transportation
 1000 Central Expressway, Suite 100
 Alhambra, CA 91801 • (626) 811-4321

94C-334(2)

94C-334(2)