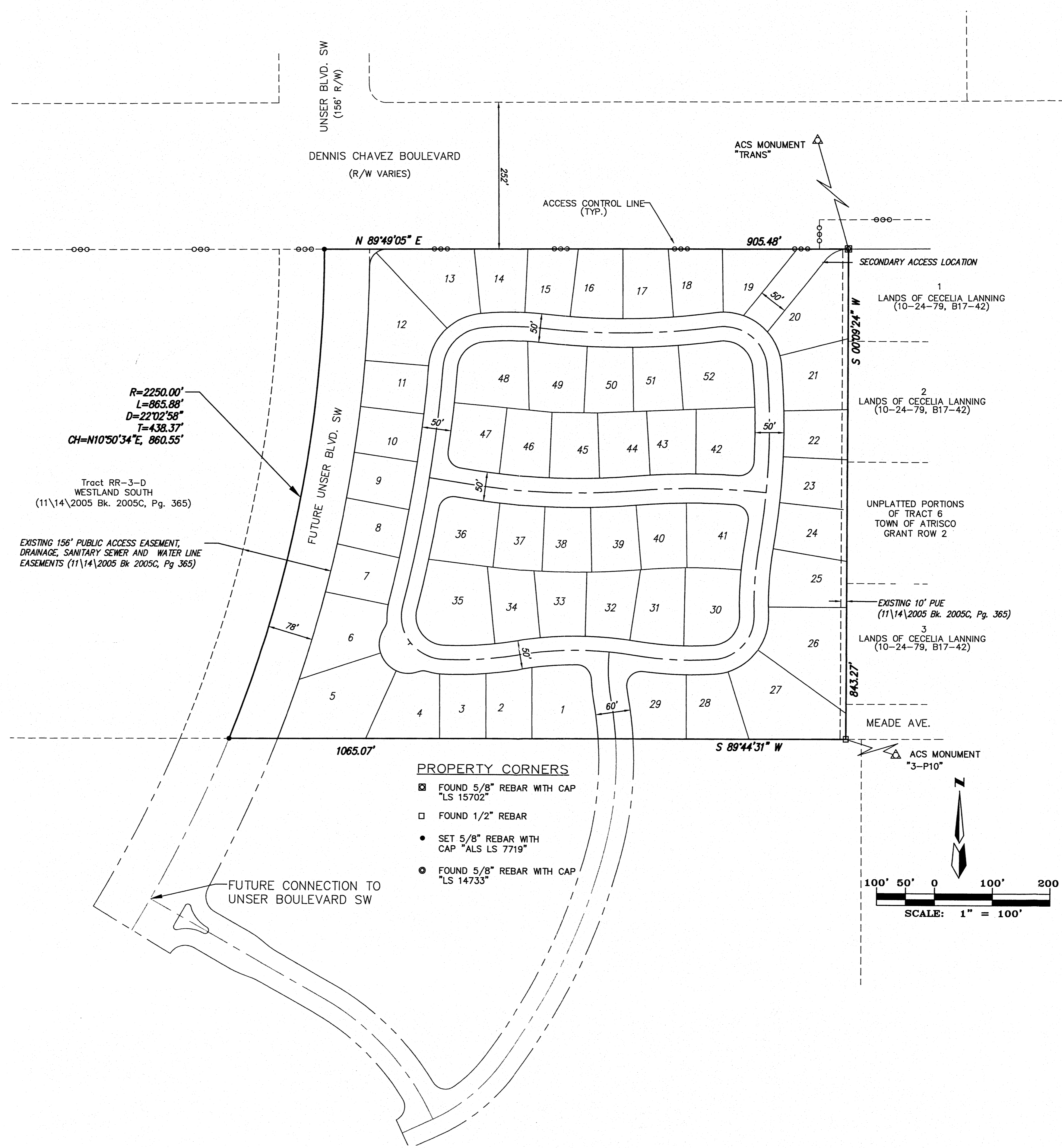
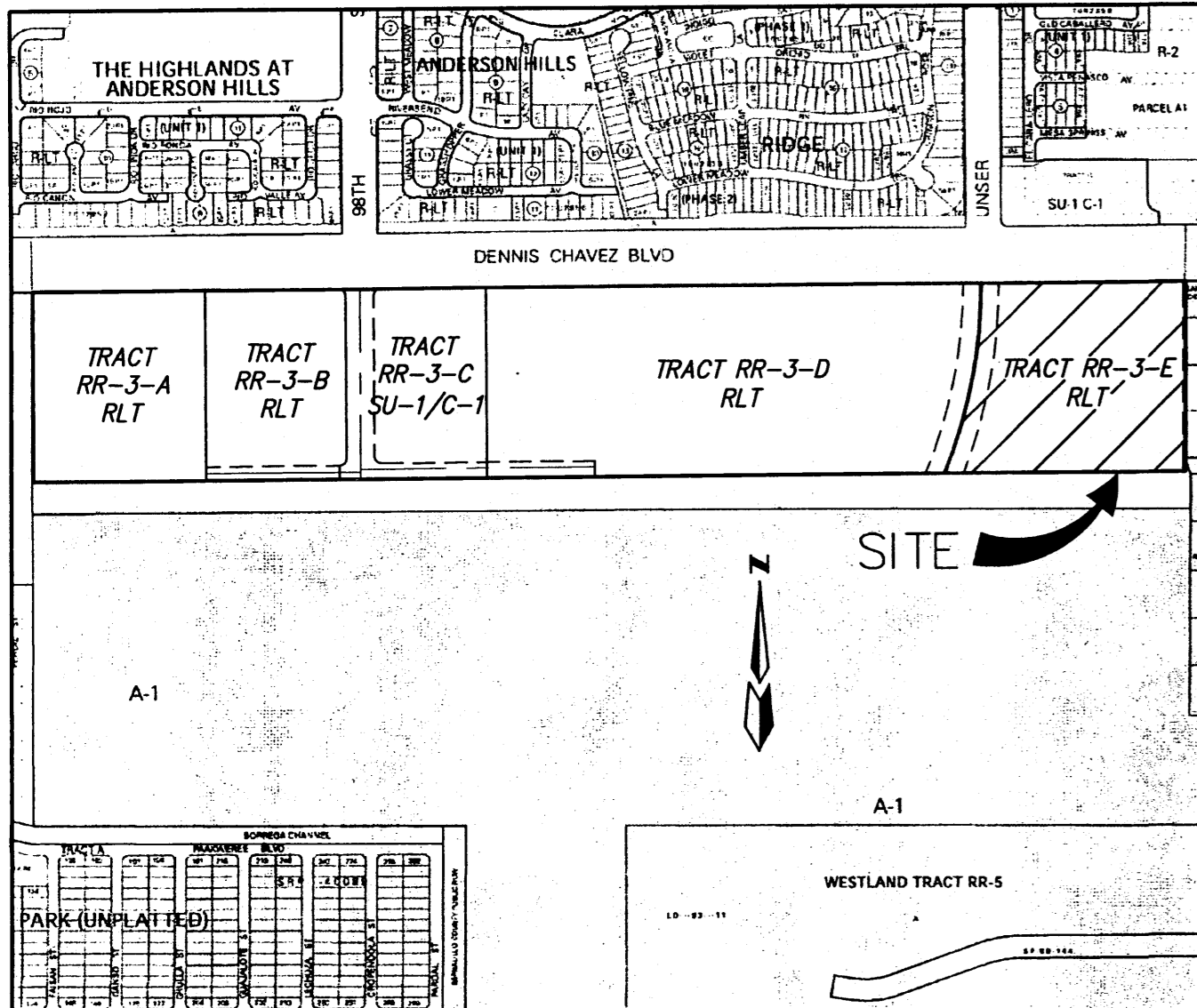


SKETCH PLAT
 CEJA VISTA, UNIT 1
 WITHIN THE
 TOWN OF ATRISCO GRANT
 PROJECTED SECTION 9
 TOWNSHIP 9 NORTH, RANGE 2 EAST, NMPM
 CITY OF ALBUQUERQUE
 BERNALILLO COUNTY, NEW MEXICO
 JANUARY, 2006



ZONE ATLAS P-9 SCALE 1"=750'

SUBDIVISION DATA

GROSS ACREAGE 18.5401 AC
 EXISTING TRACTS 1 TRACT
 LOTS CREATED 52 LOTS
 DATE OF SURVEY NOVEMBER, 2004
 TYPICAL LOT SIZE80x110'

DESCRIPTION

A tract of land within the Town of Atrisco Grant, projected Section 9, Township 9 North, Range 2 East, New Mexico Principal Meridian, City of Albuquerque, Bernalillo County, New Mexico being all of TRACTS RR-3-E, WESTLAND SOUTH as the same is shown and designated on said plat filed for record in the office of the County Clerk of Bernalillo County, New Mexico on November 14, 2005 in Book 2005C, Page 365 and containing 18.5401 acres more or less

$R=2250.00'$
 $L=865.88'$
 $D=22'02.58"$
 $T=438.37'$
 $CH=N10^{\circ}50'34"E, 860.55'$

Tract RR-3-D
 WESTLAND SOUTH
 (11\14\2005 Bk. 2005C, Pg. 365)

EXISTING 156' PUBLIC ACCESS EASEMENT,
 DRAINAGE, SANITARY SEWER AND WATER LINE
 EASEMENTS (11\14\2005 Bk 2005C, Pg 365)

PROPERTY CORNERS

- ☒ FOUND 5/8" REBAR WITH CAP "LS 15702"
- ☐ FOUND 1/2" REBAR
- SET 5/8" REBAR WITH CAP "ALS LS 7719"
- FOUND 5/8" REBAR WITH CAP "LS 14733"

SITE BENCHMARK

ACS MONUMENT
 "3-P10"
 ELEVATION=4935.735
 (SLD 1929)

SURVEYOR
 ALDRICH LAND SURVEYING
 P.O. BOX 30701
 ALBUQUERQUE, N.M. 87190
 (505) 884-1990

OWNERS
 ALBUQUERQUE RIO BRAVO PARTNERS LLC
 PO BOX 2758
 CORRALES, N.M. 87048
 (505) 440-7262

ENGINEERS
 D. MARK GOODWIN & ASSOCIATES, P.A.
 CONSULTING ENGINEERS
 P.O. BOX 90606
 ALBUQUERQUE, NEW MEXICO 87199
 (505) 828-2200

SKETCH PLAT
 CEJA VISTA, UNIT 1

dmg MARK GOODWIN & ASSOCIATES, P.A.
 CONSULTING ENGINEERS
 P.O. BOX 90606
 ALBUQUERQUE, NEW MEXICO 87199
 (505)828-2200, FAX (505)797-9539

Dwg: SKETCH1.dwg	Drawn: DIANE	Checked: DMG	Sheet 1 of 1
Scale: 1"=100'	Date: 01/16/06	Job: A04095	

1004652