

**GENERAL NOTES**

A. PROVIDE ONE H.C. RESERVED PARKING SIGN AT EACH H.C. PARKING SPACE, PER DETAIL A4/AS-403.

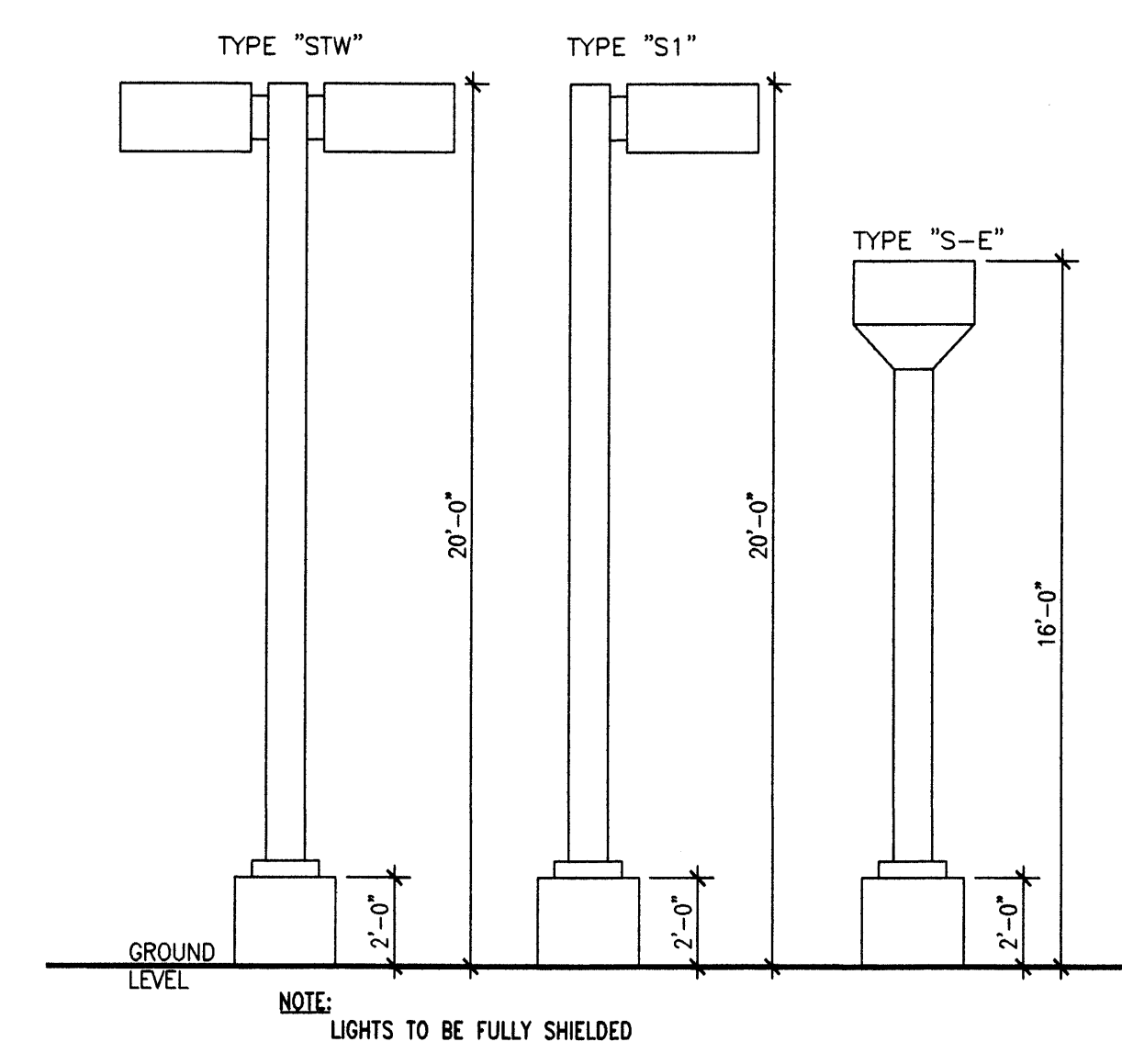
**SITE CALCULATIONS**

BUILDING SQUARE FOOTAGE	PARKING SPACES REQUIRED
1ST FLOOR TOTAL GROSS SF = 52,588 SF	263 SPACES @ 1 SPACE/200 SF
1ST FLOOR TOTAL NET SF = 50,726 SF	
2ND FLOOR TOTAL GROSS SF = 51,490 SF	172 SPACES @ 1 SPACE/300 SF
2ND FLOOR TOTAL NET SF = 48,413 SF	
3RD FLOOR TOTAL GROSS SF = 50,148 SF	167 SPACES @ 1 SPACE/300 SF
3RD FLOOR TOTAL NET SF = 47,652 SF	
	TOTAL REQUIRED = 602 SPACES
	TOTAL PROVIDED = 704 SPACES
	HC PROVIDED = 20 SPACES
	SMALL CAR SPACES PROVIDED = 159 SPACES OR 22% OF TOTAL

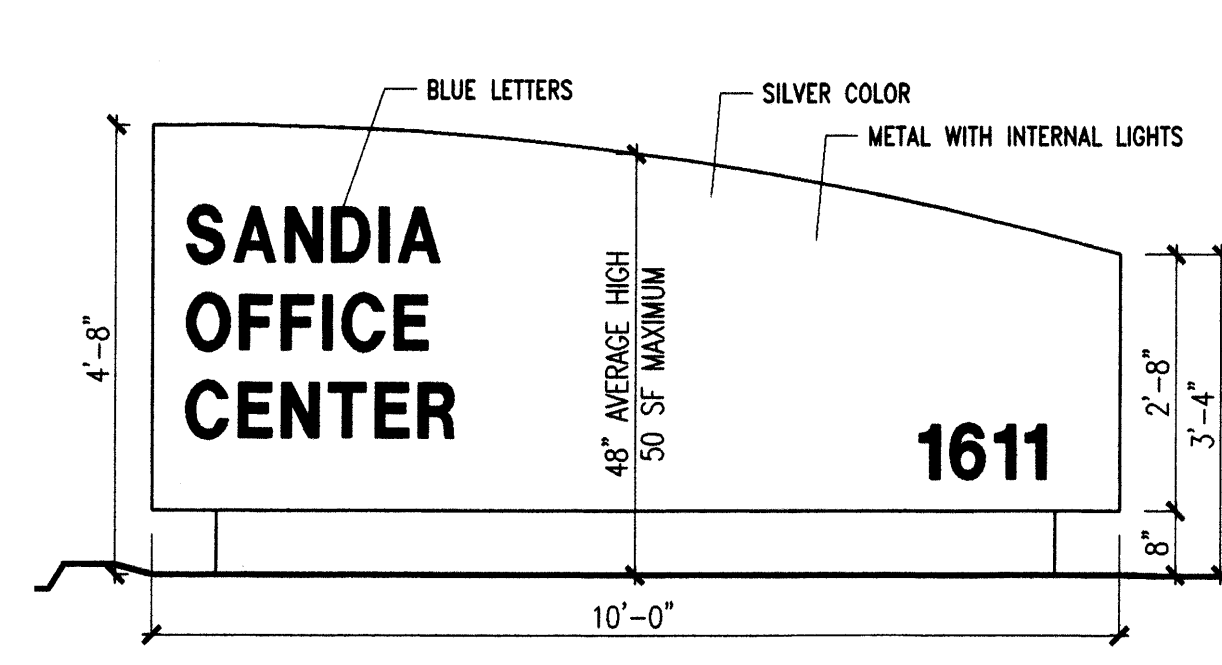
NOTE:  
INTERIOR BIKE STORAGE AREA IS PROVIDED (200 SF) AND 1 SHOWER/SEX IS PROVIDED ON THE GROUND FLOOR.

**SITE DATA**

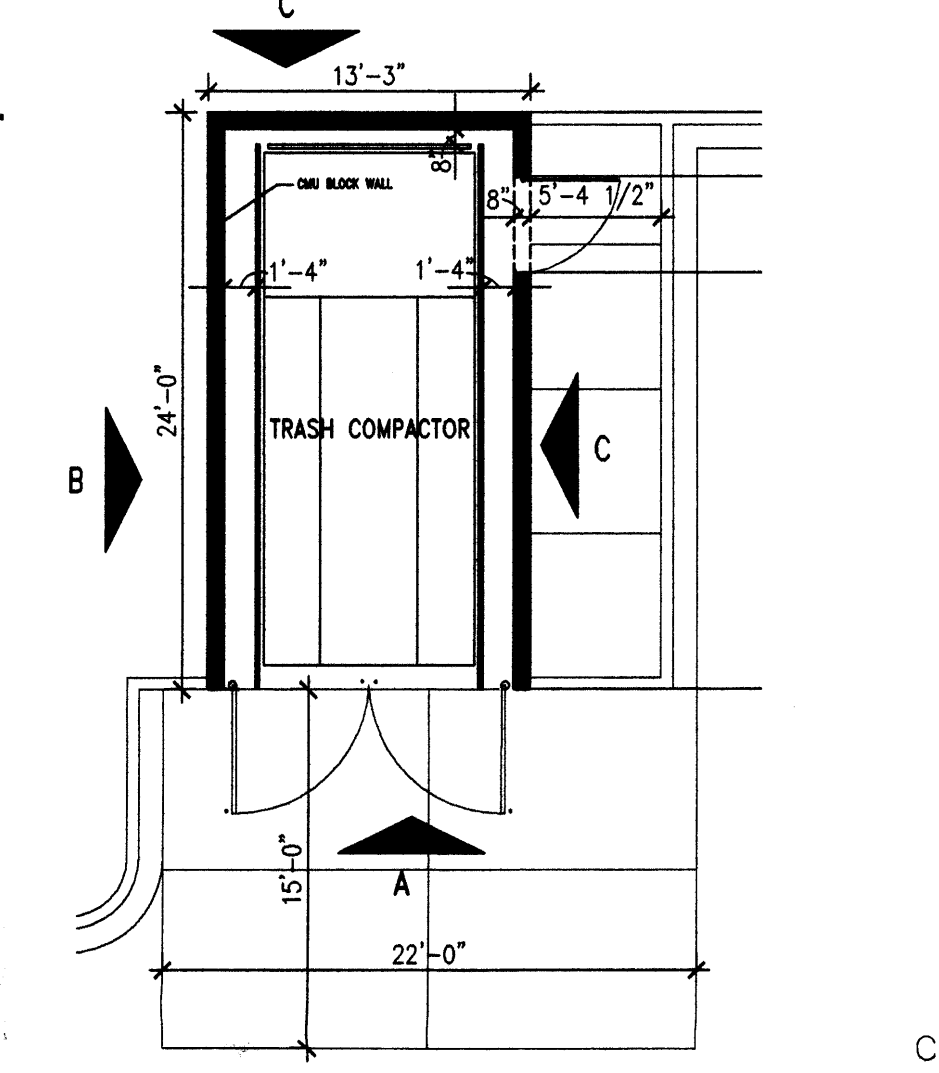
TOTAL SITE AREA, LESS 60' R.O.W. FOR INNOVATION PARKWAY	= 401,465 SF (9.22 ACRES)
BUILDING FOOTPRINT	= 52,588 SF
LANDSCAPE AREA	= 86,520 SF OR 21.55% OF TOTAL SITE AREA



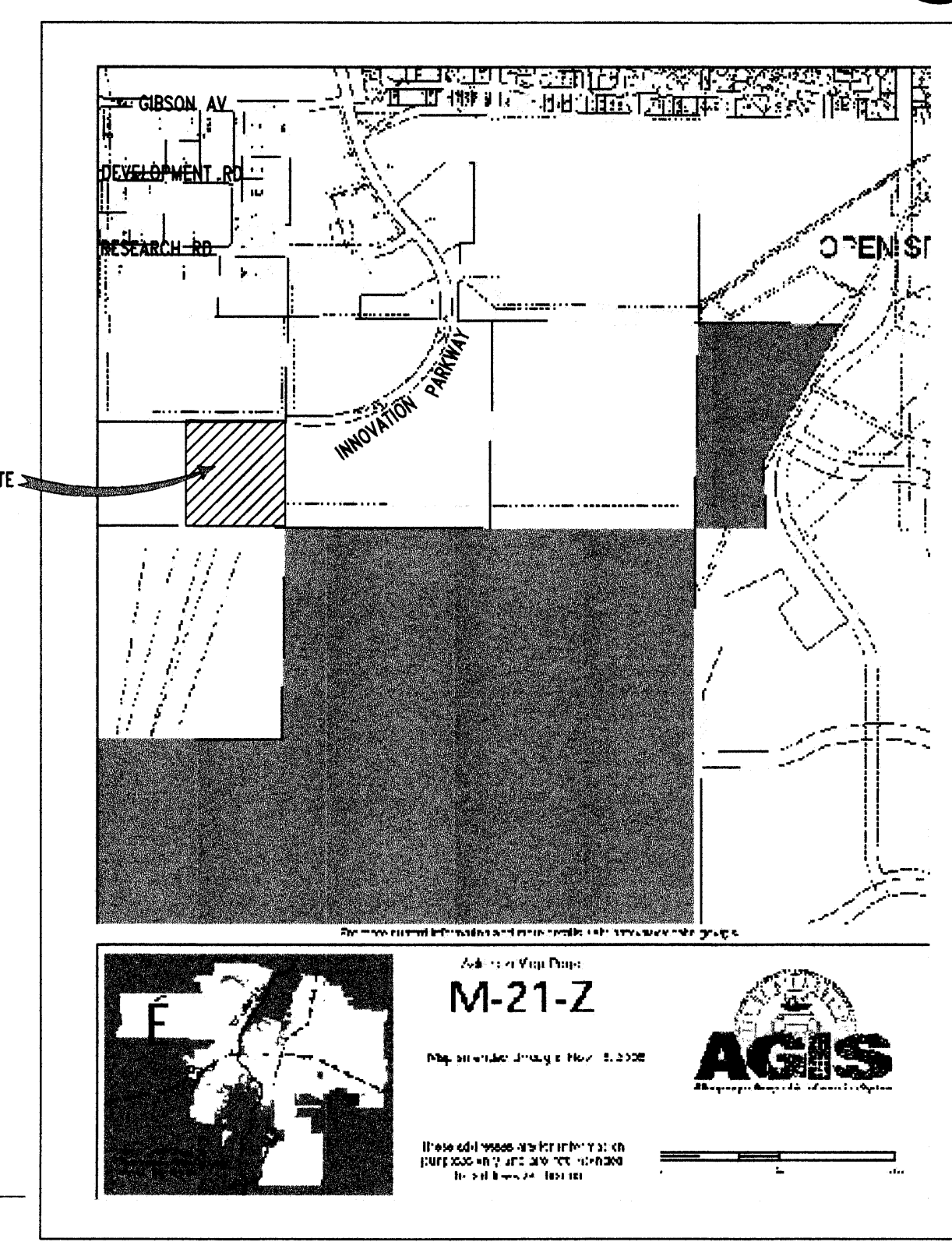
**D5 SITE LIGHTING MAXIMUM MOUNTING HEIGHTS**  
SCALE 1/4"=1'-0"



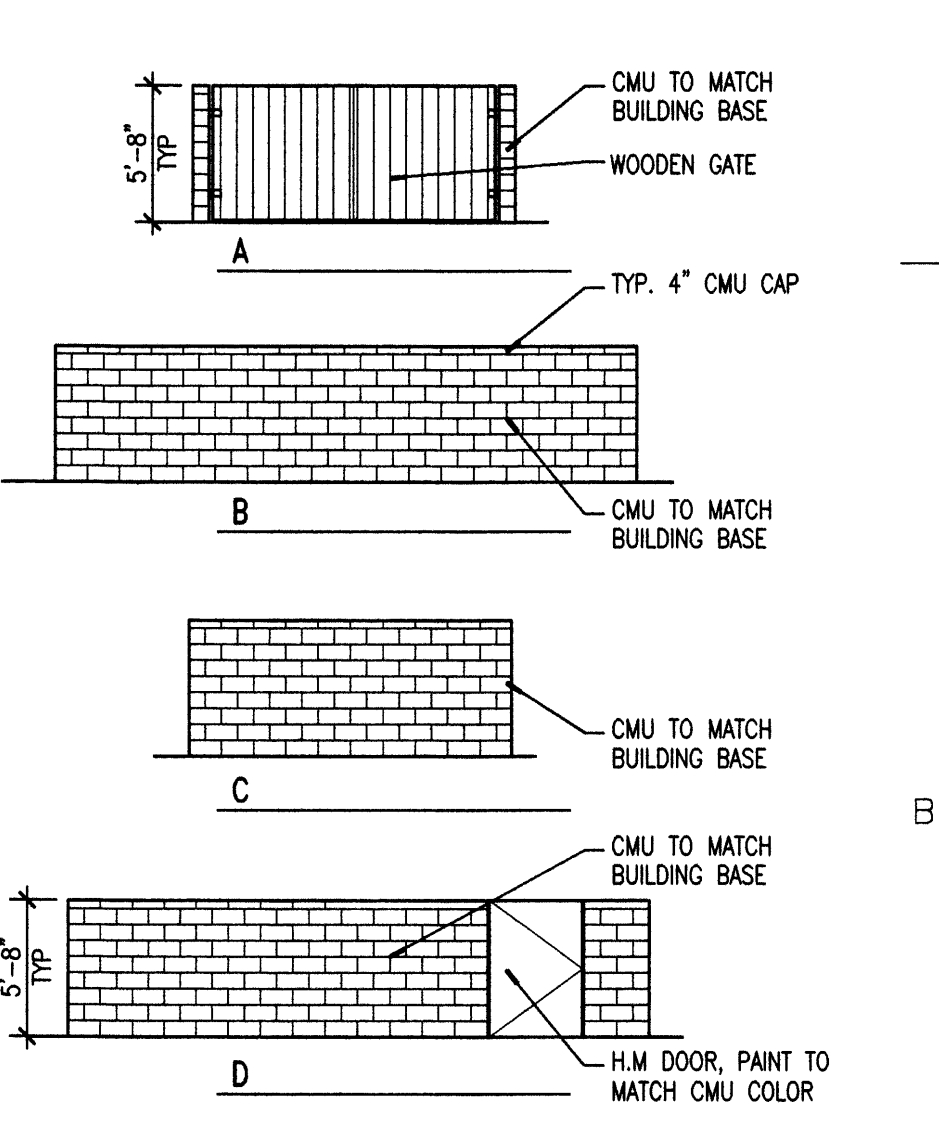
**C5 MONUMENT SIGN ELEVATION**  
SCALE 1/2"=1'-0"



**C6 TRASH COMPACTOR ENLARGED PLAN**  
SCALE 1/8"=1'-0"



**B5 VICINITY MAP**  
NTS



**B6 TRASH COMPACTOR ELEV.**  
1/8"=1'-0"

**C1 OVERALL SITE PLAN**  
SCALE 1"=30'-0"

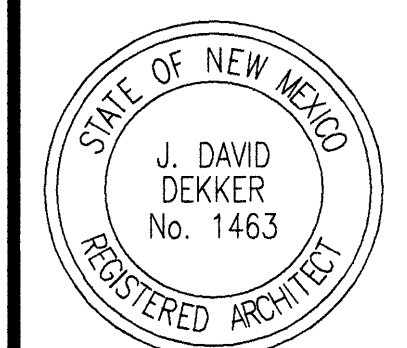


DESIGN COLLABORATIVE SOUTHWEST, INC.  
320 Central Ave., SW, Albuquerque, NM 87102  
505.843.9639 Fax: 505.843.9683  
Web Site: www.dcswarearchitects.com  
E-Mail: dcsaw@dcswarearchitects.com



CONSULTANTS

OWNER



Architect Engineer

**NOT FOR CONSTRUCTION**

150,000 SF LEASED OFFICE SPACE

SANDIA NATIONAL LABORATORIES  
RFQ# 7784

MARK	DATE	DESCRIPTION
ISSUE:	95% CD SET	
PROJECT NO:	0520	
CAD DWG FILE:	0520AS-101.dwg	
DRAWN BY:	DGP	
CHECKED BY:	DD	
DATE:	2/6/2006	

SHEET TITLE  
OVERALL SITE PLAN  
for BUILDING PERMIT

**AS-101**

PROJECT NUMBER: 1004665  
Application Number: 06DRB-00110  
Date: 2-27-06  
Date: [Signature]

#1004665



CONSULTANTS

OWNER

Architect Engineer

150,000 SF  
LEASED  
OFFICE SPACE

SANDIA NATIONAL  
LABORATORIES

RFQ# 7784

MARK	DATE	DESCRIPTION
		ISSUE: 95% CD SET
		PROJECT NO: 0520
		CAD DWG FILE:
		DRAWN BY: LF
		CHECKED BY: CG
		DATE: 2/6/2006

SHEET TITLE  
LANDSCAPE PLAN

L-101

PLANT LEGEND

Qty.	Symbol	Scientific Name 1.	Common Name	Size	Installed Size	Mature Size	Water Use
<b>Trees</b>							
35	○	<i>Chitalpa tashkentensis</i>	Chitalpa	2" B4B	8' ht. x 4' spr.	30' ht. x 30' spr.	Medium
20	○	<i>Fraxinus oxycarpa</i>	'Raywood' Raywood Ash	2" B4B	14' ht. x 6' spr.	35' ht. x 30' spr.	Medium+
19	○	<i>Fraxinus velutina</i>	'Modesto' Modesto Ash	2" B4B	14' ht. x 6' spr.	40' ht. x 35' spr.	Medium+
41	○	<i>Koeleruteria paniculata</i>	Goldenrain Tree	2" B4B	14' ht. x 6' spr.	25' ht. x 25' spr.	Medium
45	○	<i>Lagerstroemia indica</i>	Crape Myrtle	15-Gal.	8' ht. x 4' spr.	15' ht. x 15' spr.	Medium +
21	○	<i>Pinus nigra</i>	Austrian Pine	B4B	8' min. ht.	35' ht. x 25' spr.	Medium
8	○	<i>Pistachia chinensis</i>	Chinese Pistache	2" B4B	14' ht. x 6' spr.	60' ht. x 60' spr.	Medium +
12	○	<i>Tilia cordata</i>	Little-leaf Linden	2" B4B	14' ht. x 5' spr.	40' ht. x 30' spr.	Low
15	○	<i>Vitex agnus-castus</i>	Chaste Tree	15-Gal.	6-8' ht. x 4' spr.	20' ht. x 20' spr.	Medium
<b>Shrubs/Groundcovers</b>							
88	○	<i>Baccharis 'Starn'</i>	Thompson Baccharis	5-Gal.	4' o.c.	2' ht. x 4' spr.	Low +
123	○	<i>Buddleia davidii</i>	'Black Knight' Butterfly Bush	5-Gal.	5' o.c.	5' ht. x 5' spr.	Medium
126	○	<i>Caryopteris clandonensis</i>	Blue Mist	5-Gal.	3' o.c.	3' ht. x 3' spr.	Medium
41	○	<i>Cassipouia gilliesii</i>	Yellow Bird of Paradise	5-Gal.	8' o.c.	8' ht. x 8' spr.	Low
32	○	<i>Chrysothamnus nauseosus</i>	Chamisa	1-Gal.	5' o.c.	4' ht. x 4' spr.	Low
109	○	<i>Cotoneaster apiculatus</i>	Cranberry Cotoneaster	5-Gal.	4' o.c.	3' ht. x 4' spr.	Medium
124	○	<i>Ericameria laricina</i>	'Aglirre' Turpentine Bush	1-Gal.	2' o.c.	2' ht. x 2' spr.	Low
138	○	<i>Eurotia lanata</i>	Winterfat	1-Gal.	3' o.c.	2' ht. x 3' spr.	Low
130	○	<i>Fallugia paradoxa</i>	Apache Plume	1-Gal.	5' o.c.	4' ht. x 4' spr.	Low
158	○	<i>Hesperaloe parviflora</i>	Red Yucca	1-Gal.	3' o.c.	3' ht. x 3' spr.	Medium
121	○	<i>Penstemon ambiguus</i>	Sand Penstemon	1-Gal.	2' o.c.	2' ht. x 2' spr.	Low
51	○	<i>Perovskia atriplicifolia</i>	Russian Sage	1-Gal.	5' o.c.	4' ht. x 5' spr.	Medium
68	○	<i>Potentilla fruticosa</i>	Shrubby Cinquefoil	1-Gal.	3' o.c.	3' ht. x 3' spr.	Low +
43	○	<i>Rhus trilobata</i>	Three-leaf Sumac	5-Gal.	4' o.c.	4' ht. x 4' spr.	Low+
116	○	<i>Rosmarinus officinalis</i>	Rosemary	1-Gal.	3' o.c.	3' ht. x 3' spr.	Low +
92	○	<i>Salvia greggii</i>	Cherry Sage	1-Gal.	3' o.c.	3' ht. x 3' spr.	Medium
100	○	<i>Santolina chamaecyparissus</i>	Gray Lavender Cotton	5-Gal.	6' o.c.	2' ht. x 5' spr.	Low
<b>Ornamental Grasses</b>							
104	○	<i>Muhlenbergia cap. 'Regal Mist'</i>	Muhly Grass	5-Gal.	3' o.c.	3' ht. x 3' spr.	Medium
88	○	<i>Nassella tenuissima</i>	Threadgrass	1-Gal.	3' o.c.	3' ht. x 3' spr.	Low +
<b>Native Turf Grass Mix</b>							
10,768 SF (12%)		<i>Bouteloua gracilis</i> / Blue Grama					Low+
		<i>Buchloe dactyloides</i> / Buffalo Grass					Low+
<b>Park Blend Turf Grass Mix</b>							
10,661 SF (12%)		<i>Festuca elatior</i> / Tall Fescue					High
		<i>Lolium perenne</i> / Ryegrass					High
		<i>Poa pratensis</i> / Kentucky Bluegrass					High
7,748 SF		Cobble (2"-4" Santa Ana Tan)					
68		Moss Rock Boulder (3' min. dia.)					

**MULCHES**  
All shrub planting areas shall be top dressed with Santa Fe Brown 4 Santa Ana Tan (1:1 ratio) Crusher Fines unless specified as Cobble (2" - 4" Santa Ana Tan).

**IRRIGATION SYSTEM**  
Irrigation system standards outlined in the Water Conservation Landscaping and Water Waste Ordinance shall be strictly adhered to. A fully automated Irrigation system will be used to irrigate tree, shrub and groundcover planting areas.

**MAINTENANCE RESPONSIBILITY**  
Maintenance of the landscaping and Irrigation system, including those areas within the public ROW, shall be the responsibility of the Owner.

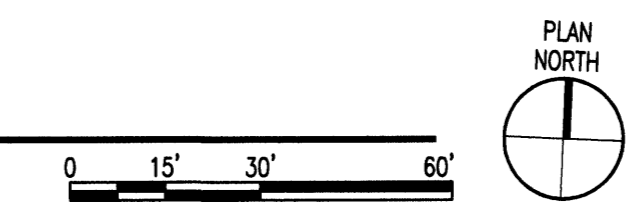
**STATEMENT OF WATER WASTE**  
The Landscape Plan for this site shall limit the provision of high water use turf to a maximum of 20 percent of the provided landscape area.

**DETENTION FOND**  
Fond shall be surrounded by a 4' wrought Iron fence as defined in the site plan details.

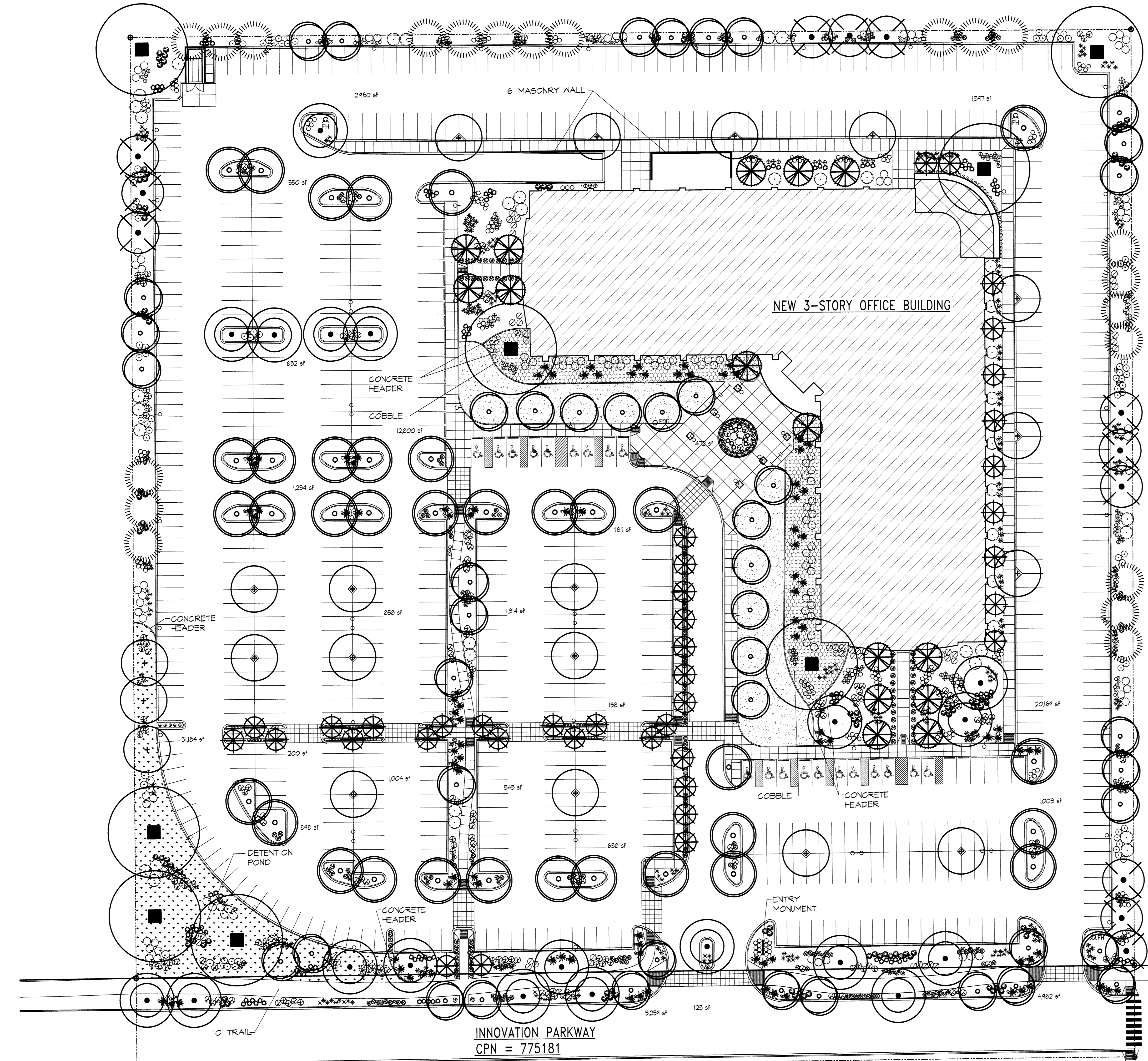
**LANDSCAPE REQUIREMENTS**

Site Area:	10.13 acres	44113 SF
Building Total Area:		150,000 SF
Building Footprint:		52,592 SF
Total Area:		388,521 SF
Required Landscape %:		.15
Landscape Area Required:		58,278 SF
Landscape Area Provided:		(23%) 89,381 SF
Outdoor Patio Area Required:		(minimum) 250 SF
Outdoor Patio Area Provided:		1,501 SF

1 tree per 20' along Innovation Parkway Required and Provided



**CONSENSUS PLANNING, INC.**  
Planning / Landscape Architecture  
302 Eighth Street NW  
Albuquerque, NM 87102  
(505) 764-9801 Fax 842-5495  
e-mail: cp@consensusplanning.com



CONSULTANTS

OWNER

Architect Engineer

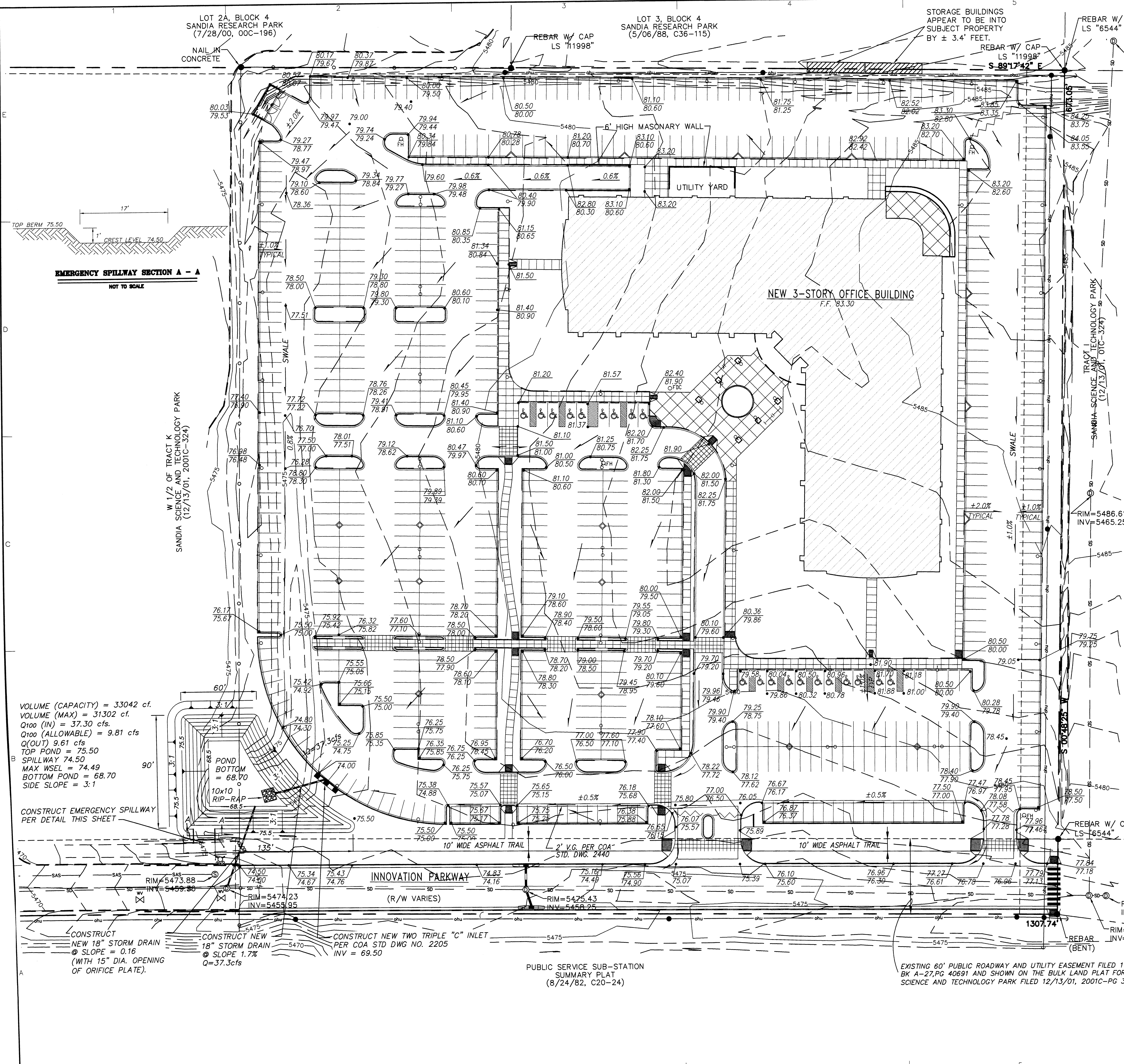
150,000 SF  
LEASED  
OFFICE SPACE

SANDIA NATIONAL LABORATORIES

RFQ# 7784

MARK	DATE	DESCRIPTION
ISSUE:	95% CD SET	
PROJECT NO:	0520	
CAD DWG FILE:		
DRAWN BY:	CAD	
CHECKED BY:	PROJECT ARCH	
DATE:	2/6/2006	

SHEET TITLE  
GRADING AND DRAINAGE PLAN



**SITE**

**VICINITY MAP** ZONE MAP: M-21

**NOTICE TO CONTRACTORS**

1. AN EXCAVATION/CONSTRUCTION PERMIT WILL BE REQUIRED BEFORE BEGINNING ANY WORK WITHIN CITY RIGHT OF WAY.
2. ALL WORK DETAILED ON THESE PLANS TO BE PERFORMED, EXCEPT AS OTHERWISE STATED OR PROVIDED HEREON, SHALL BE CONSTRUCTED IN ACCORDANCE WITH "CITY OF ALBUQUERQUE STANDARD SPECIFICATIONS FOR PUBLIC WORKS CONSTRUCTION" (1985 EDITION).
3. TWO WORKING DAYS PRIOR TO ANY EXCAVATION, CONTRACTOR MUST CONTACT THE LINE LOCATING SERVICE, 765-1234, FOR LOCATION OF EXISTING UTILITIES.
4. PRIOR TO CONSTRUCTION, THE CONTRACTOR SHALL EXCAVATE AND VERIFY THE HORIZONTAL AND VERTICAL LOCATIONS OF ALL OBSTRUCTIONS. SHOULD A CONFLICT EXIST, THE CONTRACTOR SHALL NOTIFY THE ENGINEER SO THAT THE CONFLICT CAN BE RESOLVED WITH A MINIMUM AMOUNT OF DELAY.
5. BACKFILL COMPACTION SHALL BE ACCORDING TO TRAFFIC/STREET USE.
6. MAINTENANCE OF THESE FACILITIES SHALL BE THE RESPONSIBILITY OF THE OWNER OF THE PROPERTY SERVED.
7. WORK ON ARTERIAL STREETS SHALL BE PERFORMED ON A 24 HOUR BASIS.

**ACS BENCHMARK**

ACS MONUMENT "7-120" HAVING AN ELEVATION OF 5468.798 FEET.

**LEGAL DESCRIPTION**

TRACT K, SANDIA SCIENCE AND TECHNOLOGY PARK, AS THE SAME IS SHOWN AND DESIGNATED ON THE MAP OF SAID ADDITION, FILED IN THE OFFICE OF THE COUNTY CLERK OF BERNALILLO COUNTY, NEW MEXICO ON DECEMBER 13, 2001, IN BK. 2001C, PAGE 324.

**LEGEND**

- EXISTING CONTOUR MAJOR
- EXISTING CONTOUR MINOR
- EXISTING SPOT ELEVATIONS
- EXISTING GUARDRAIL
- EXISTING CURB
- EXISTING OVERHEAD ELECTRIC
- PROPOSED CURB & GUTTER
- EXISTING EASEMENT
- PROPERTY LINE
- FOUND AS INDICATED
- WATER VALVE
- SANITARY SEWER MANHOLE
- STORM DRAIN MANHOLE
- FIRE HYDRANT
- OVERHEAD UTILITY LINES
- UTILITY POLE
- GUY WIRE
- CHAIN LINK FENCE
- EXISTING STORM DRAIN
- WATER BLOCK
- STREET LIGHT

**SANDIA NATIONAL LAB OFFICE BLDG**

**SANDIA SCIENCE & TECH PARK**

**GRADING & DRAINAGE PLAN**

**dmg** MARK GOODWIN & ASSOCIATES, P.A.  
CONSULTING ENGINEERS  
P.O. BOX 90608  
ALBUQUERQUE, NEW MEXICO 87199  
(505)828-2200, FAX (505)797-9539

THIS CONTRACT

WORK IN R/W TO BE COMPLETED UNDER CPN 775181 (SHOWN FOR INFORMATION ONLY)

RIM=5477.77  
INV=5463.64

RIM=5477.70  
INV=5462.76

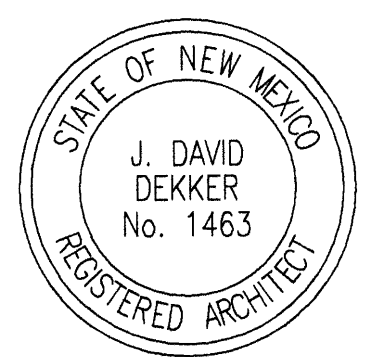
SHEET TITLE

GRADING AND DRAINAGE PLAN

SCALE: 1" = 30'

CONSULTANTS

OWNER



Architect Engineer

150,000 SF  
LEASED  
OFFICE SPACE

SANDIA NATIONAL  
LABORATORIES

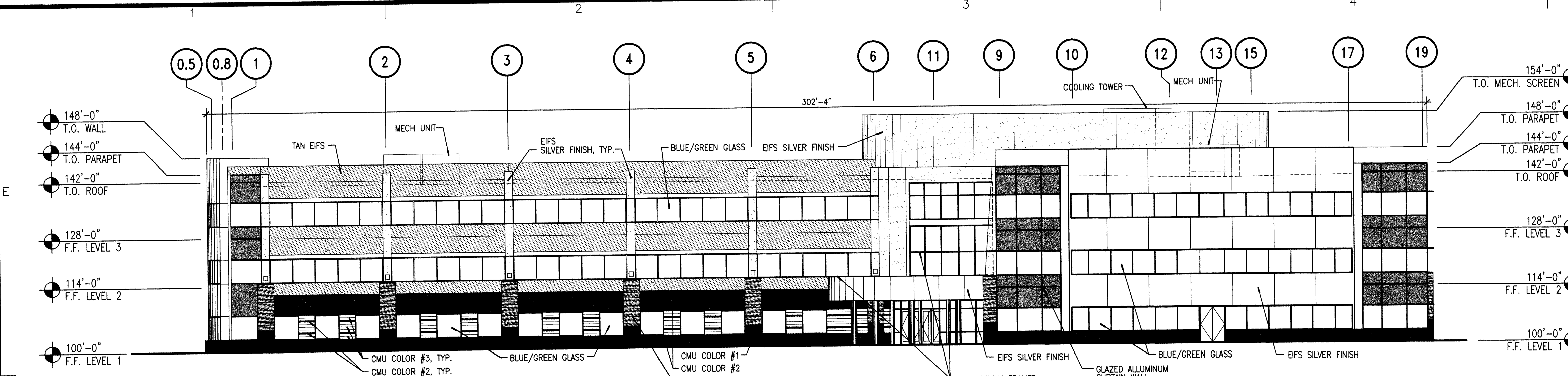
RFQ# 7784

MARK	DATE	DESCRIPTION
		ISSUE: 95% CD SET
		PROJECT NO: 0520
		CAD DWG FILE:
		DRAWN BY:
		CHECKED BY:
		DATE: 2/6/2006

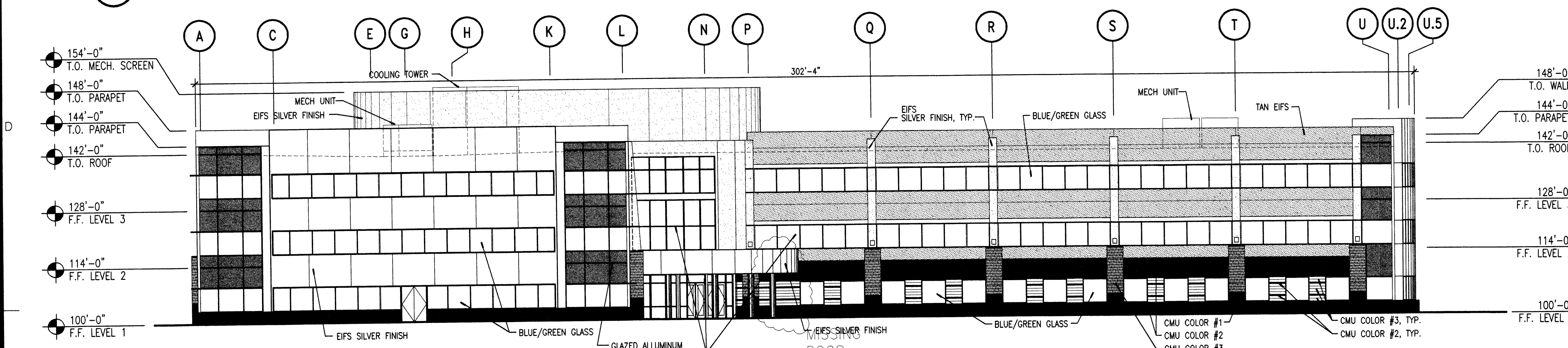
SHEET TITLE

OVERALL BUILDING  
ELEVATIONS

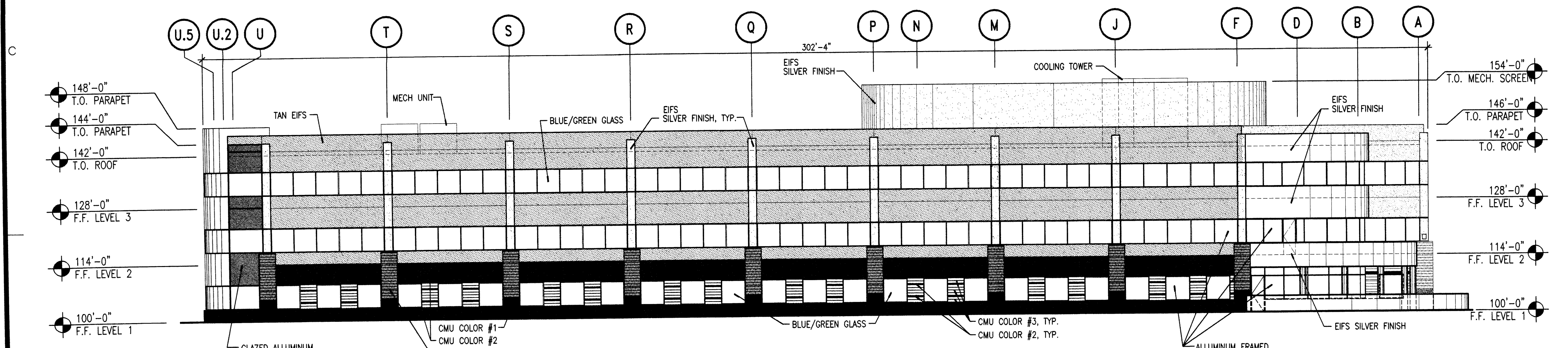
**A-201**



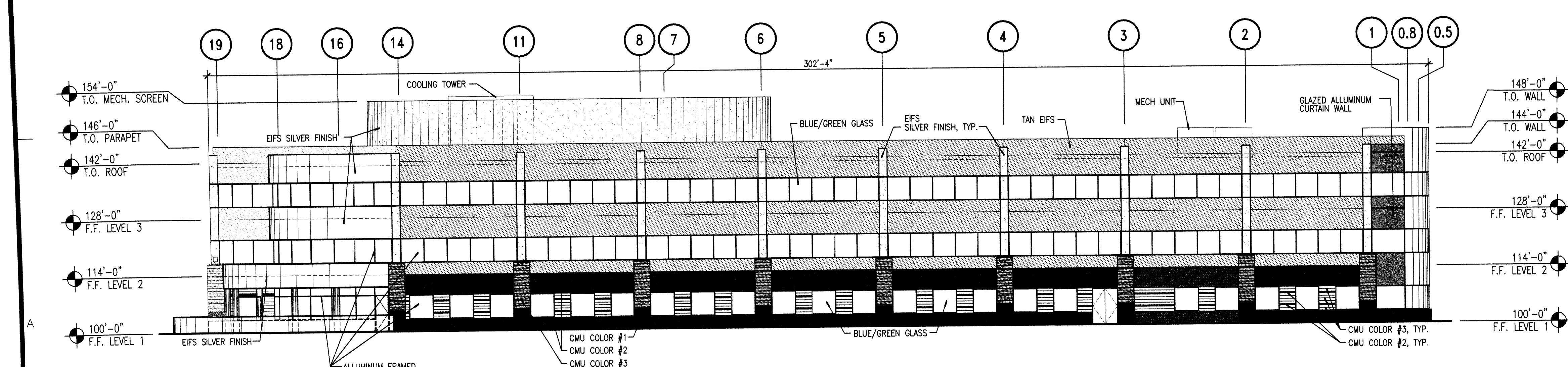
**D1 SOUTH ELEVATION**  
1/16" = 1'-0"



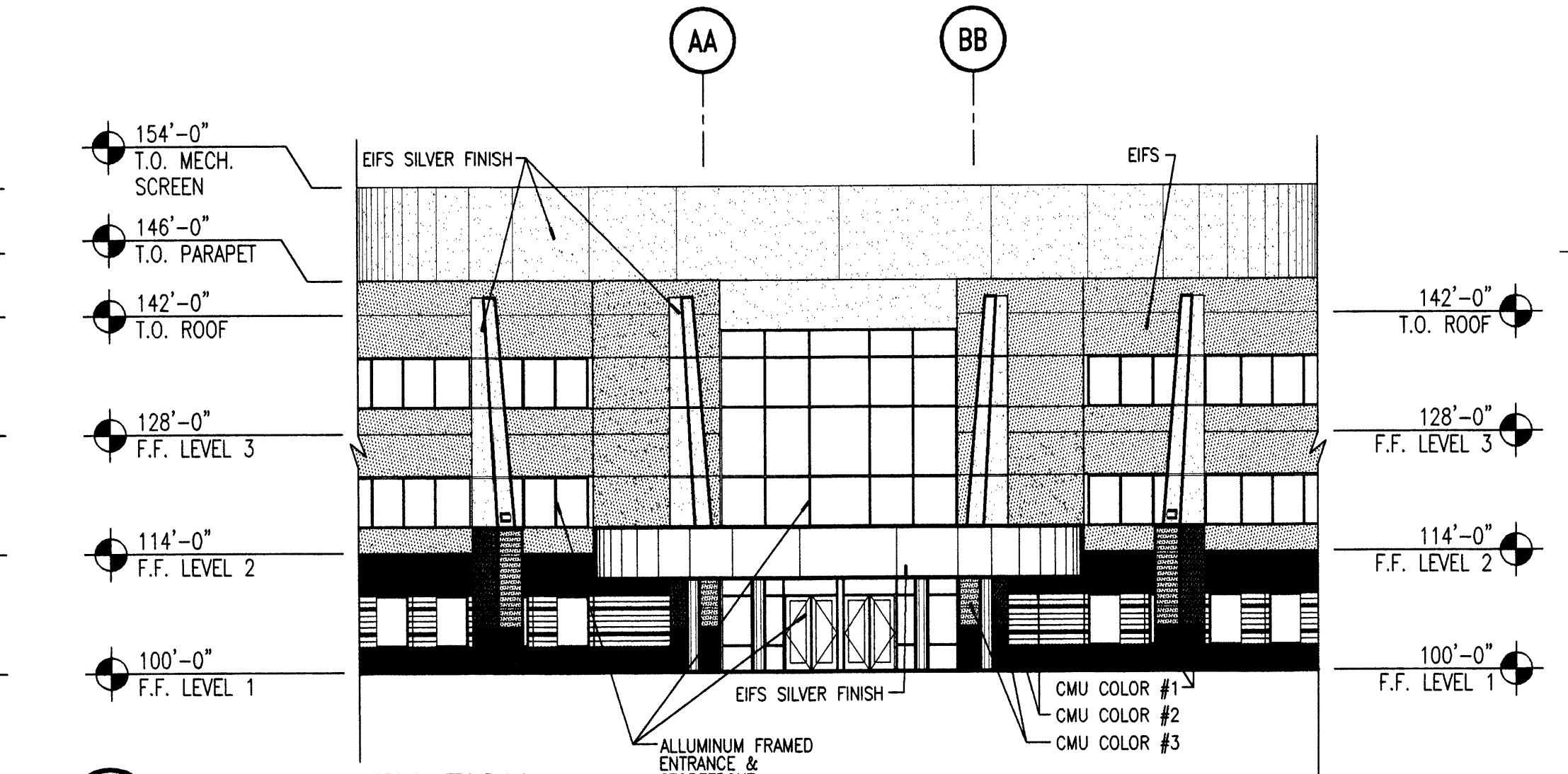
**C1 WEST ELEVATION**  
1/16" = 1'-0"



**B1 EAST ELEVATION**  
1/16" = 1'-0"



**A1 NORTH ELEVATION**  
1/16" = 1'-0"



**A5 ENTRY ELEVATION**  
1/16" = 1'-0"

CMU COLOR KEY UTILITY BLOCK COMPANY INC.	
	CMU COLOR 1 - 810 DOMINO
	CMU COLOR 2 - 260 CHESNUT
	CMU COLOR 3 - 920 RIO PUERCO

