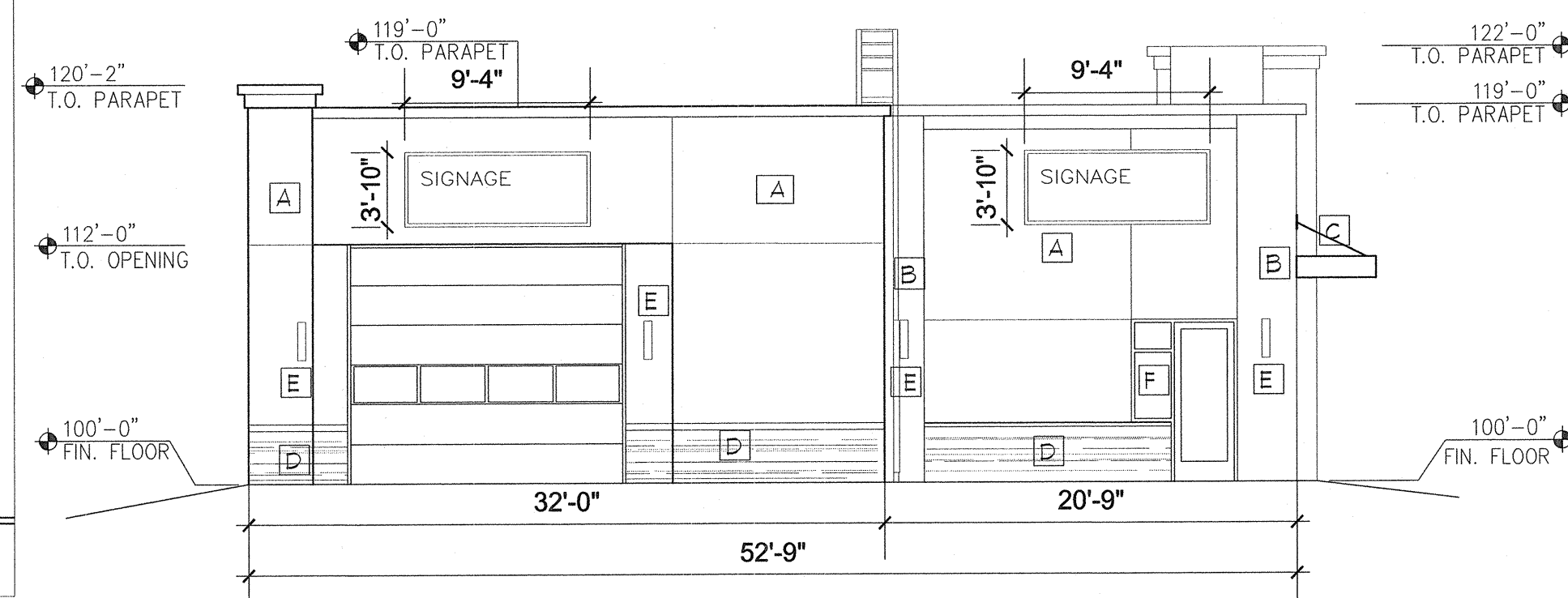


DUMPSTER ENCLOSURE
1/4" = 1'-0"

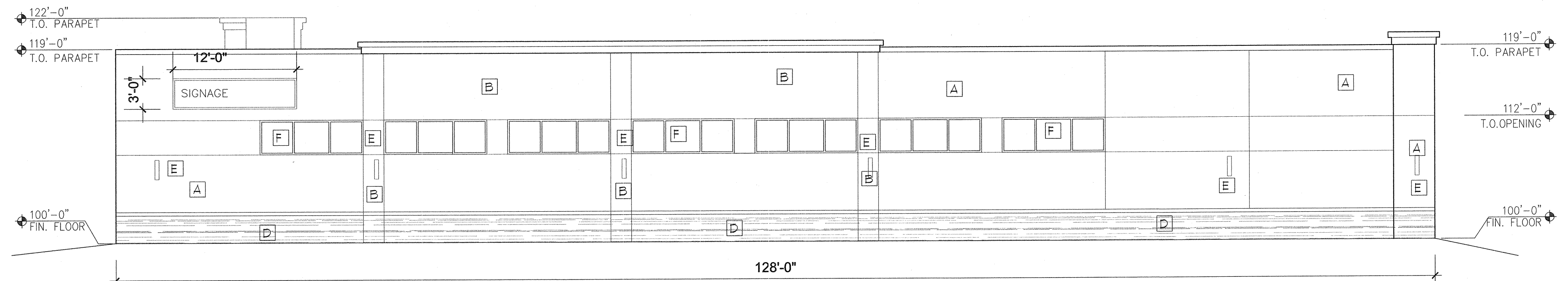


TYP. BIKE LOOP
NTS

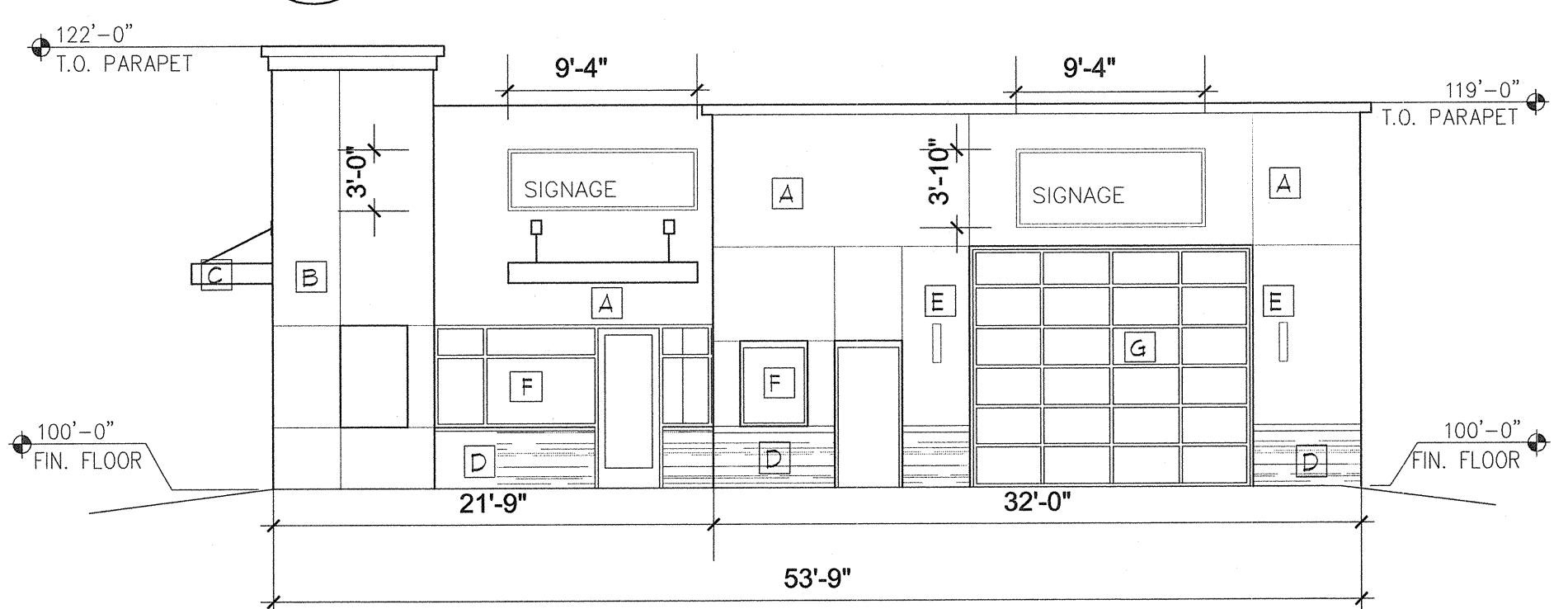


CARWASH NORTH ELEVATION
1/8" = 1'-0"

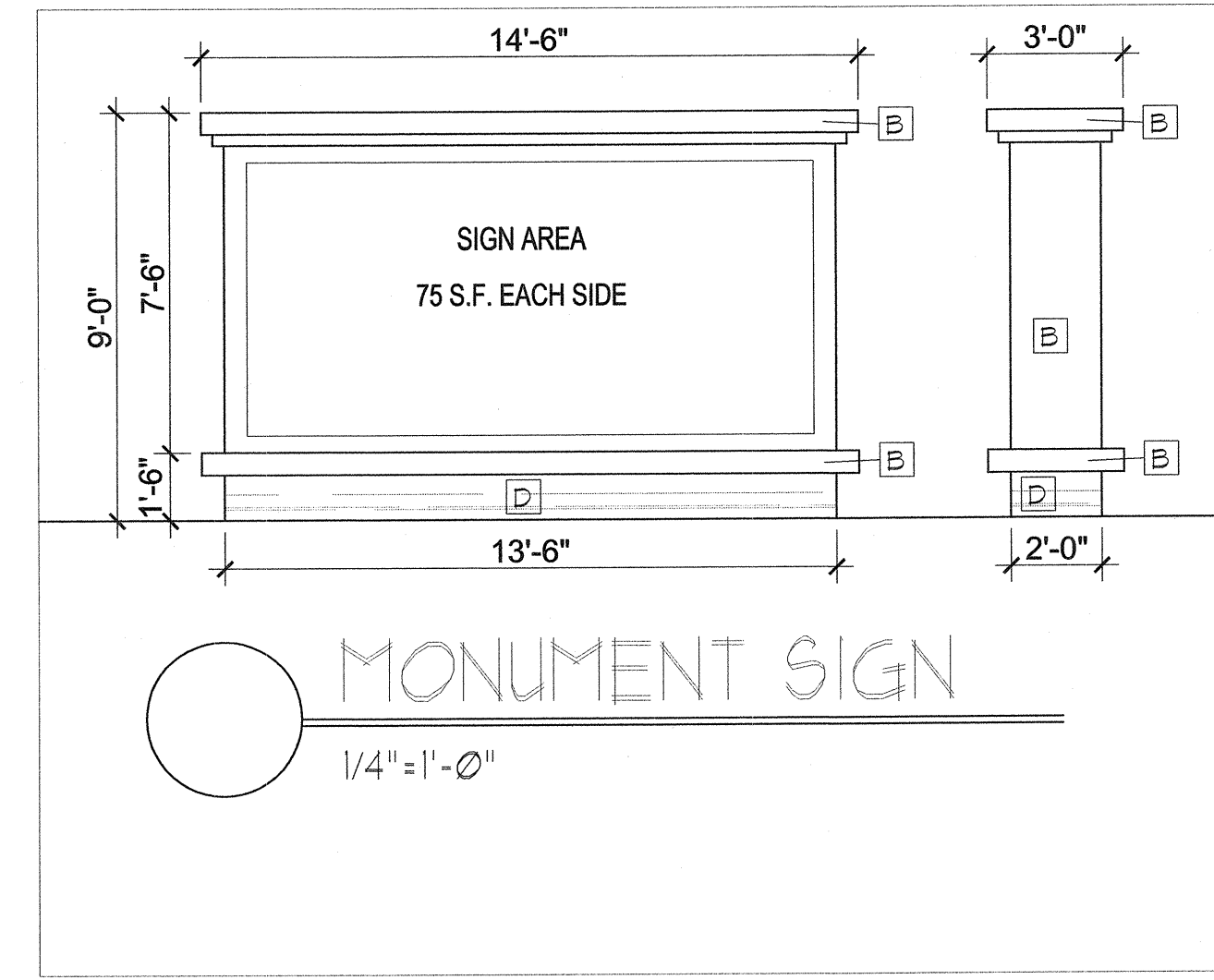
MATERIAL	SPEC	COMMON COLOR
A	STUCCO MATCH SW7004 SNOWBOUND	LIGHT TAN
B	STUCCO MATCH SW6332 CORAL ISLAND	LIGHT WARM BROWN
C	PAINTED METAL SHADING DEVICE MATCH SW6332 CORAL ISLAND	WARM BROWN
D	CULTURED STONE PRO-FIT LEDGESTONE AUTUMN	LIGHT TAN
E	LIGHT FIXTURE	LIGHT TAN
F	ALUMINUM FRAMED STOREFRONT	CLEAR ANODIZED FRAME CLEAR INSULATED GLASS UNIT OR OPAQUE SPANDREL
G	ALUMINUM FRAMED COILING DOOR	CLEAR ANODIZED FRAME CLEAR INSULATED GLASS UNIT OR OPAQUE SPANDREL



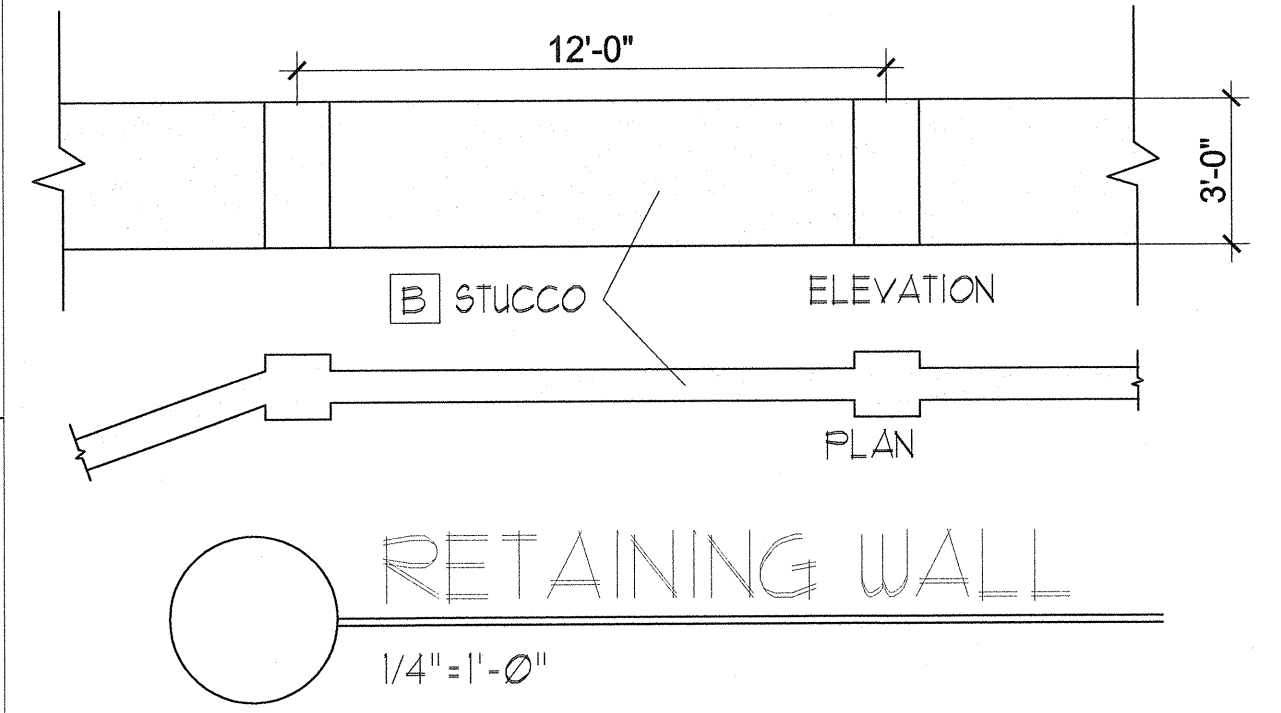
CARWASH EAST ELEVATION
1/8" = 1'-0"



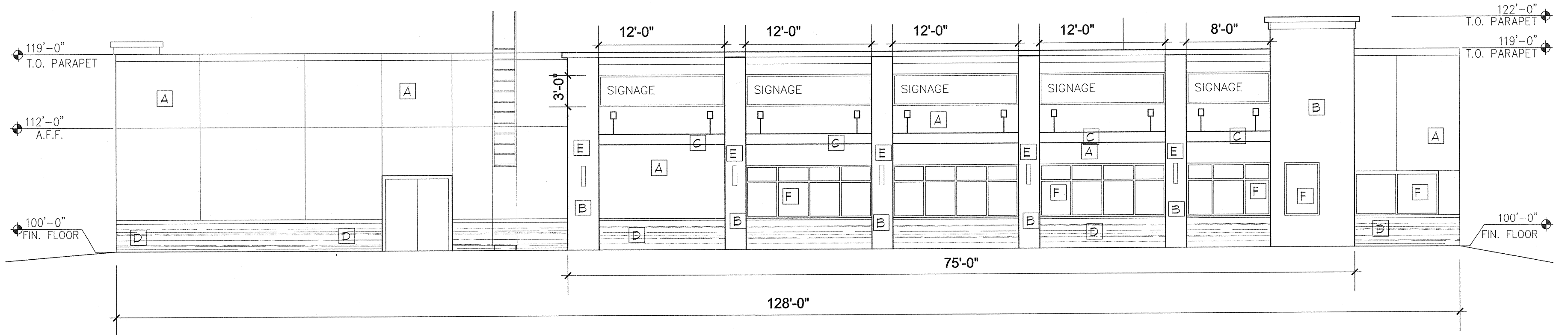
CARWASH SOUTH ELEVATION
1/8" = 1'-0"



MONUMENT SIGN
1/4" = 1'-0"



RETAINING WALL
1/4" = 1'-0"



CARWASH WEST ELEVATION
1/8" = 1'-0"

WALL MOUNTED SIGNS SHALL NOT EXCEED 8% OF EACH FACADE



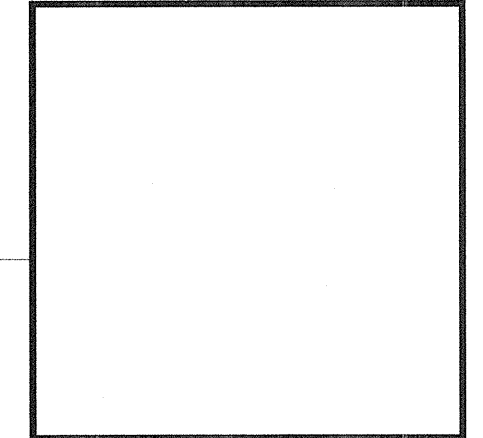
TYP. OUTDOOR BENCH
NTS



TYP. OUTDOOR TABLES/CHAIRS
NTS

REVISION	BY	DATE
1		
2		
3		
4		
5		

MODULUS ARCHITECTS
220 COPPER AVE. N.W. SUITE 350
ALBUQUERQUE, NEW MEXICO 87102
PHONE (505) 338-1499 FAX (505) 338-1498



PROJECT TITLE	5401 SEVILLA AVE. NW
COOR. & SEVILLA	ALBUQUERQUE, NY
PROJECT MANAGER	JONATHAN STERN
DRAWN BY	JS
JOB NO.	
SHEET TITLE	ELEVATIONS AND DETAILS

DATE	6/15/16
SCALE	AS NOTED
SHEET	A1