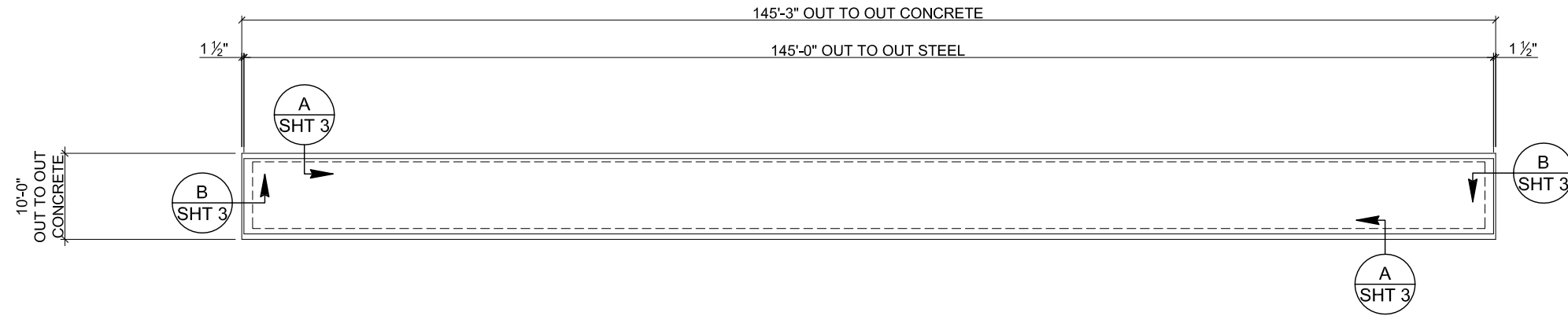
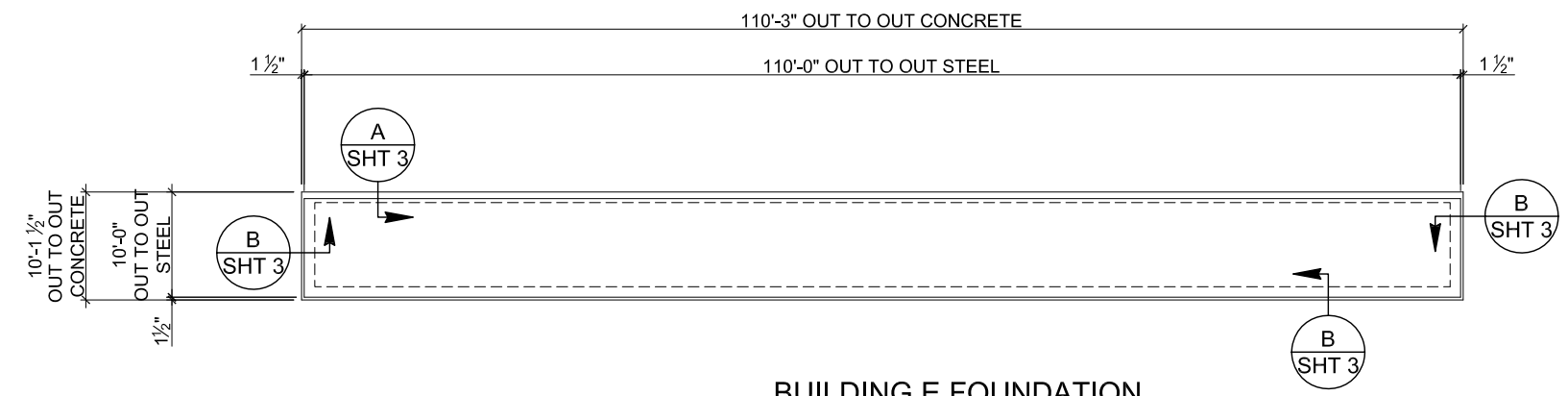


BUILDING A FOUNDATION



BUILDING D FOUNDATION



BUILDING E FOUNDATION

ENGINEER: T. Blake Wilson
 REGISTERED PROFESSIONAL ENGINEER
 NEW MEXICO
 13174
 DATE: 10-13-14
 SHEET: SHT # 1 OF 15

PROJECT INFO:
NORTH COORS STORAGE
 615 COORS ROAD NW
 ALBUQUERQUE, NM

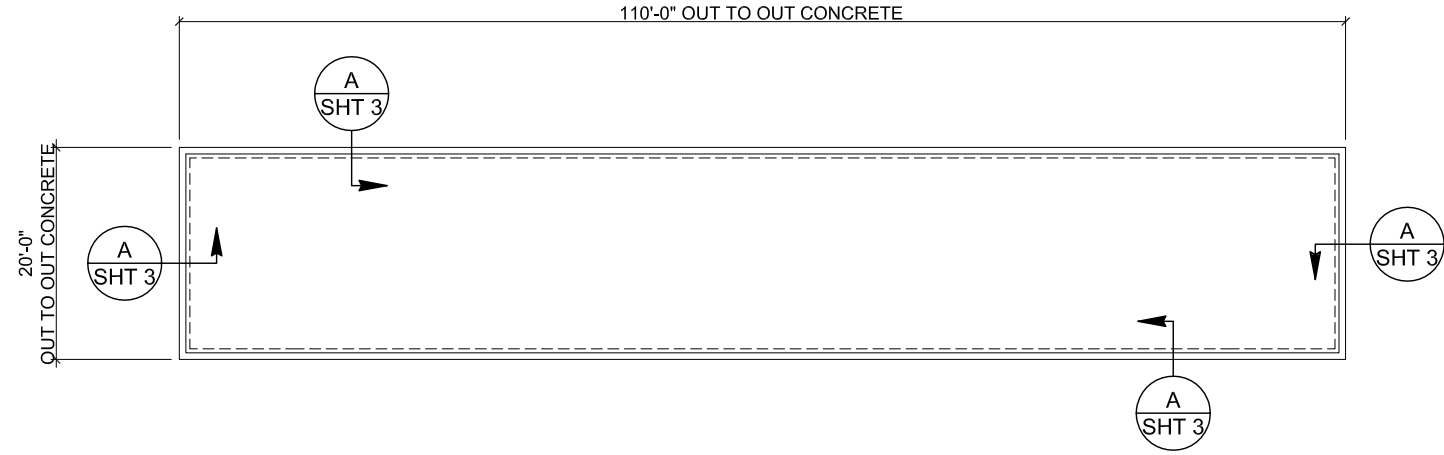
FOUNDATION PLAN

REVISION	DESCRIPTION
10-13-14	For Design

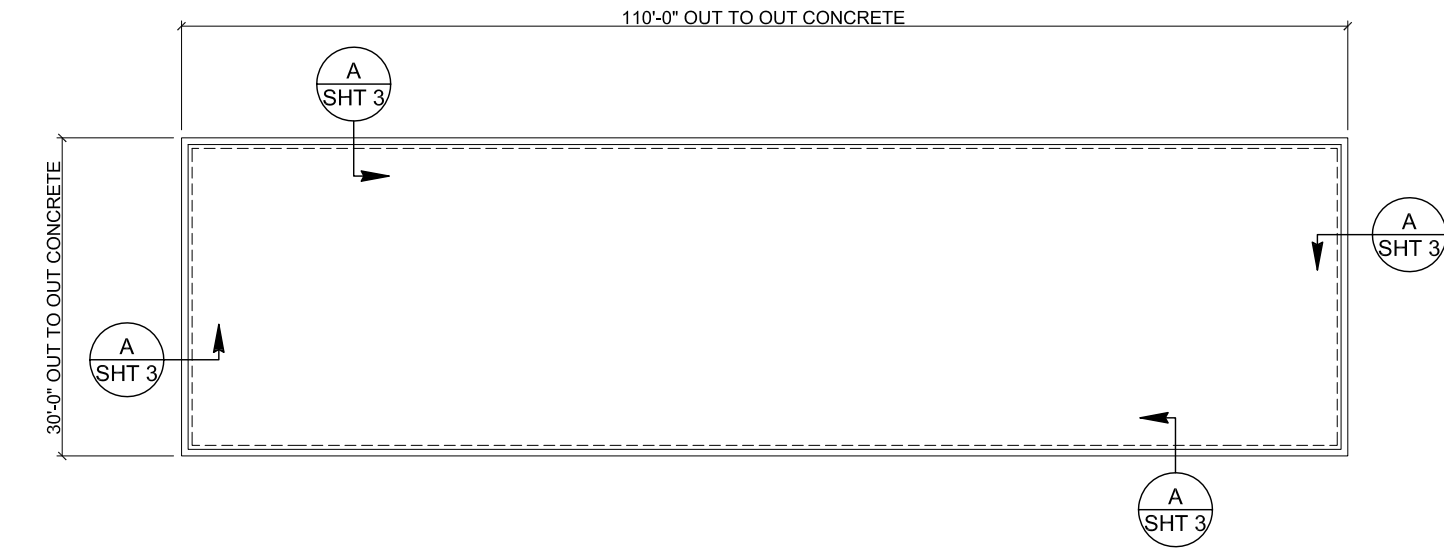
Pre-engineered Buildings
 Self-Storage Facilities
 1304 State Road 209 • CLOVIS, N.M. 88101
 PHONE: (575) 763-1150 FAX: (575) 763-1155

GMB
 CONSOLIDATED METAL BUILDERS

CONFIDENTIAL: THIS DOCUMENT AND THE INFORMATION CONTAINED HEREIN ARE THE PROPERTY OF GMB. UNAUTHORIZED COPYING, DISCLOSURE OR OTHER UNAUTHORIZED USES ARE PROHIBITED.



BUILDING C FOUNDATION



BUILDING B FOUNDATION



Pre-engineered Buildings
Self-Storage Facilities
1304 State Road 209 • CLOVIS, N.M. 88101
PHONE: (575) 763-1150 FAX: (575) 763-1155

CONFIDENTIAL: THIS DOCUMENT AND THE INFORMATION CONTAINED HEREIN ARE THE PROPERTY OF CMB. UNAUTHORIZED COPYING, DISCLOSURE OR OTHER UNAUTHORIZED USES ARE PROHIBITED.

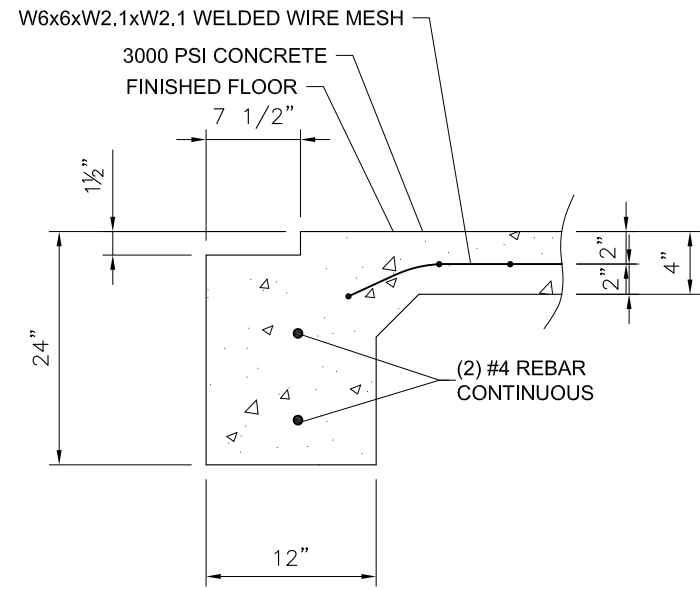
REVISION	DESCRIPTION
10-13-14	For Design

PROJECT INFO:
NORTH COORS STORAGE
615 COORS ROAD NW
ALBUQUERQUE, NM

SHEET TITLE:
FOUNDATION PLAN

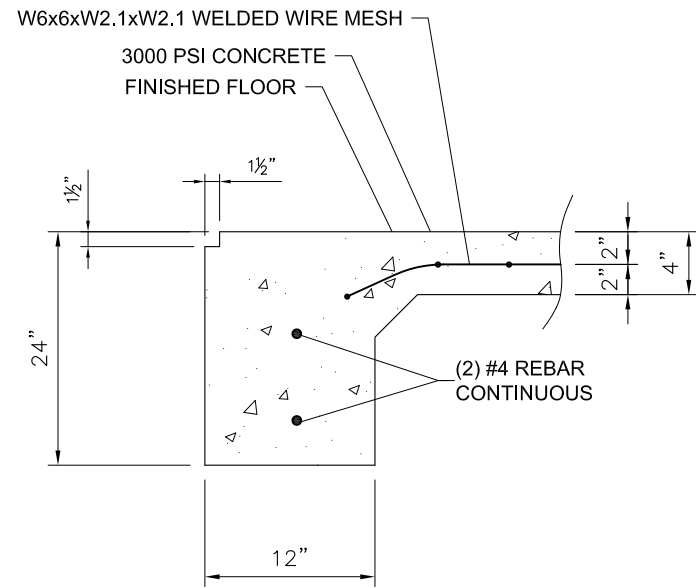
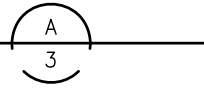
ENGINEER: **T. Blake Wilson**
REGISTERED PROFESSIONAL ENGINEER
NEW MEXICO
13174
11/04/14

DATE: 10-13-14
SHEET: SHT # 2 OF 15



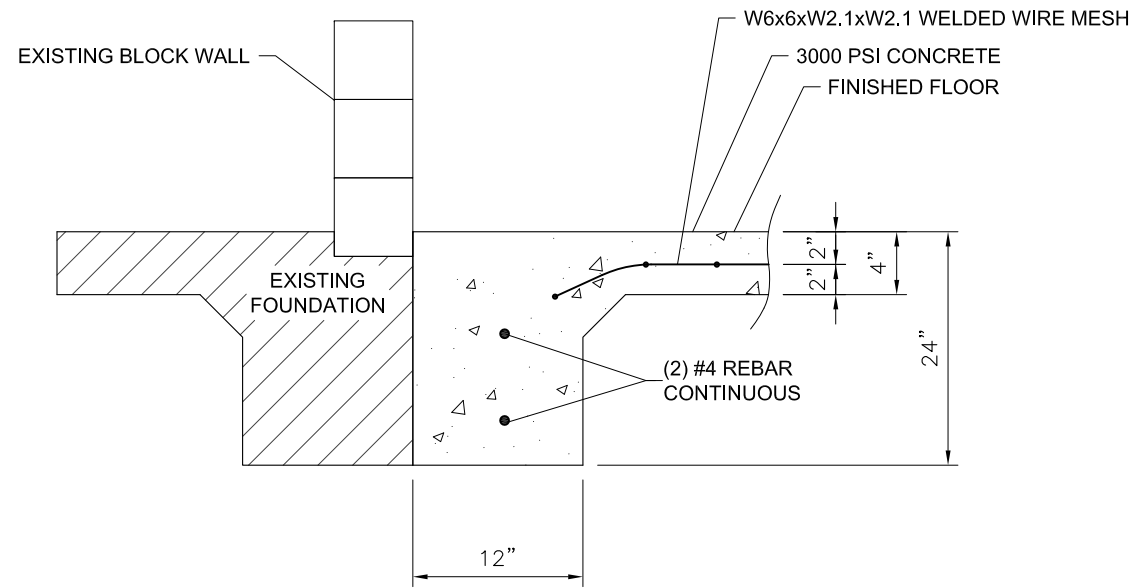
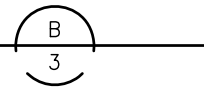
DOOR RECESS DETAIL

SCALE: NOT TO SCALE



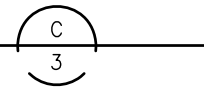
SHEETING NOTCH DETAIL

SCALE: NOT TO SCALE



SHEETING NOTCH DETAIL

SCALE: NOT TO SCALE



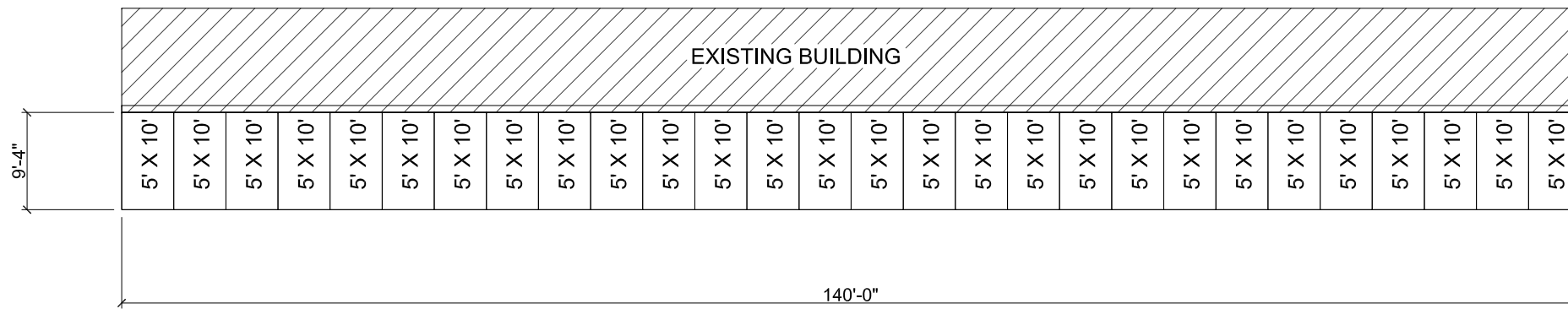
ENGINEER: T. BLAKE WILSON
 REGISTERED PROFESSIONAL ENGINEER
 NEW MEXICO
 13174
 T. Blake Wilson
 11/04/14
 DATE: 10-13-14
 SHEET: SHT # 3 OF 15

PROJECT INFO:
NORTH COORS STORAGE
 615 COORS ROAD NW
 ALBUQUERQUE, NM
 SHEET TITLE: FOUNDATION PLAN

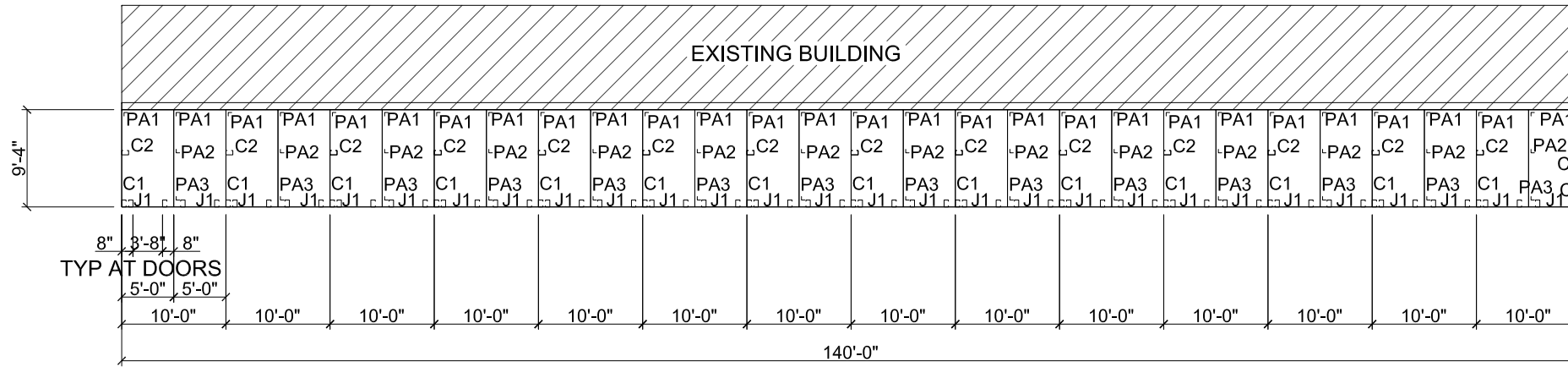
REVISION	DESCRIPTION
10-13-14	For Design

Pre-engineered Buildings
 Self-Storage Facilities
 1304 State Road 209 • CLOVIS, N.M. 88101
 PHONE: (575) 763-1150 FAX: (575) 763-1155

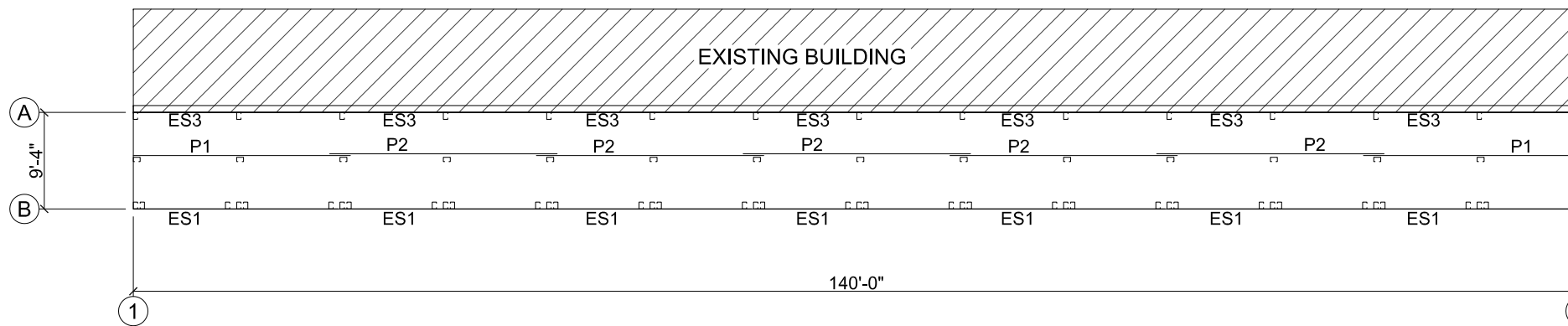
CONFIDENTIAL: THIS DOCUMENT AND THE INFORMATION CONTAINED HEREIN ARE THE PROPERTY OF CMB. UNAUTHORIZED COPYING, DISCLOSURE OR OTHER UNAUTHORIZED USES ARE PROHIBITED.



BUILDING A LAYOUT



BUILDING A FRAMING PLAN



BUILDING A ROOF FRAMING PLAN

ENGINEER: T. BLAKE WILSON
 NEW MEXICO
 13174
 REGISTERED PROFESSIONAL ENGINEER
 T. Blake Wilson
 11/04/14

DATE: 10-13-14
 SHEET: SHT #4 OF 15

PROJECT INFO:
 NORTH COORS STORAGE
 615 COORS ROAD NW
 ALBUQUERQUE, NM

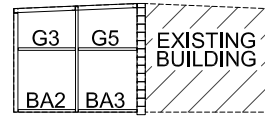
SHEET TITLE:
 FLOOR PLAN

REVISION	DESCRIPTION
10-13-14	For Design

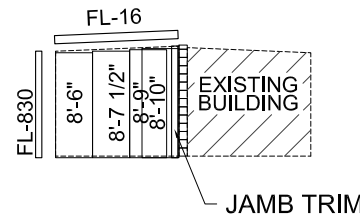
Pre-engineered Buildings
 Self-Storage Facilities
 1304 State Road 209 • CLOVIS, N.M. 88101
 PHONE: (575) 763-1150 FAX: (575) 763-1155

CONFIDENTIAL: THIS DOCUMENT AND THE INFORMATION CONTAINED HEREIN ARE THE PROPERTY OF CMB. UNAUTHORIZED COPYING, DISCLOSURE OR OTHER UNAUTHORIZED USES ARE PROHIBITED.

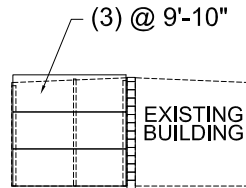
MEMBER SCHEDULE		
C1 THRU C2	COLUMNS	4" x 2 1/2" C 16ga. H (MAX) = 12'-0" TALL
G3 & G5	GIRTS	4" x 2 1/2" C 16ga.
BC & TC	BASE CHANNEL	2" [4 7/8] 2" 16ga.
	RAKE ANGLE	2" x 4" 16ga.
	ROOF SHEETS	26ga. "PBR" Color
	WALL SHEETS	26ga. "PBR" Color
PA	PARTITION SHEETS	26ga. "PBU" Galv.
	PARTITION ANGLE	2" x 4" 16ga.
P1-P2	PURLINS	4" x 2 1/2" Z 16ga. 10'-0" (MAX SPAN)
ES1 & ES3	EAVE STRUT	4" x 4" x 4" 16ga.
H2	HEADER	4" x 2 1/2" C 16ga. 12'-0" (MAX SPAN)



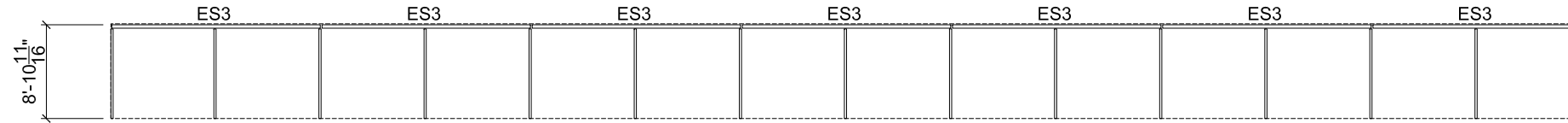
**SIDEWALL FRAMING LINE 16
LINE 1 OPPOSITE**



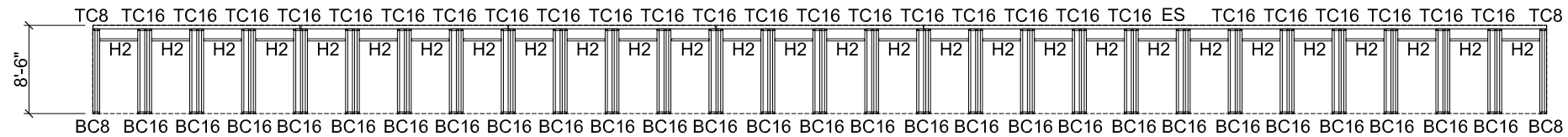
**SIDEWALL SHEETING LINE 16
LINE 1 OPPOSITE**



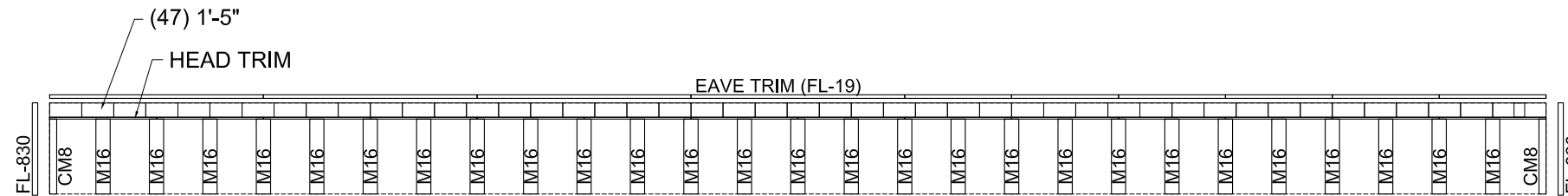
**PARTITION
TYP. OF 14**



SIDEWALL FRAMING LINE A



SIDEWALL FRAMING LINE B



SIDEWALL SHEETING LINE B

ENGINEER: **T. Blake Wilson**
 REGISTERED PROFESSIONAL ENGINEER
 NEW MEXICO
 13174
 DATE: 10-13-14
 SHEET: **SHT # 5 OF 15**

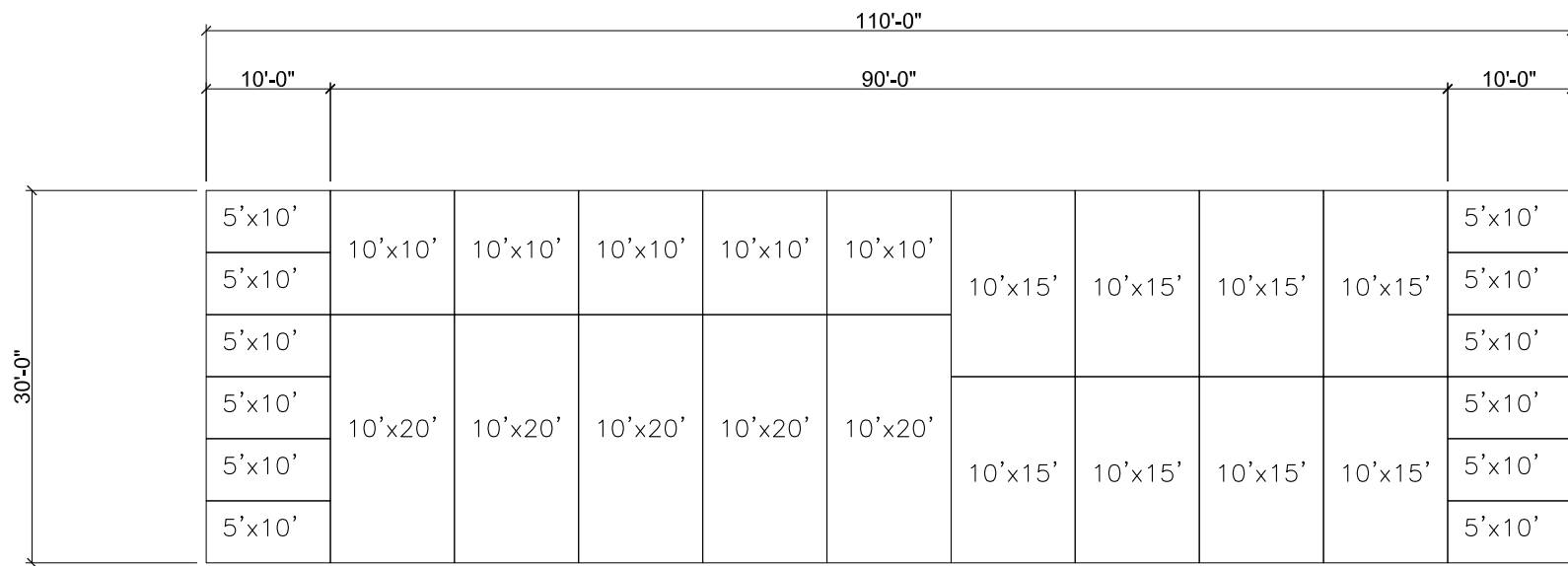
PROJECT INFO:
NORTH COORS STORAGE
615 COORS ROAD NW
ALBUQUERQUE, NM

SHEET TITLE:
FRAMING PLAN

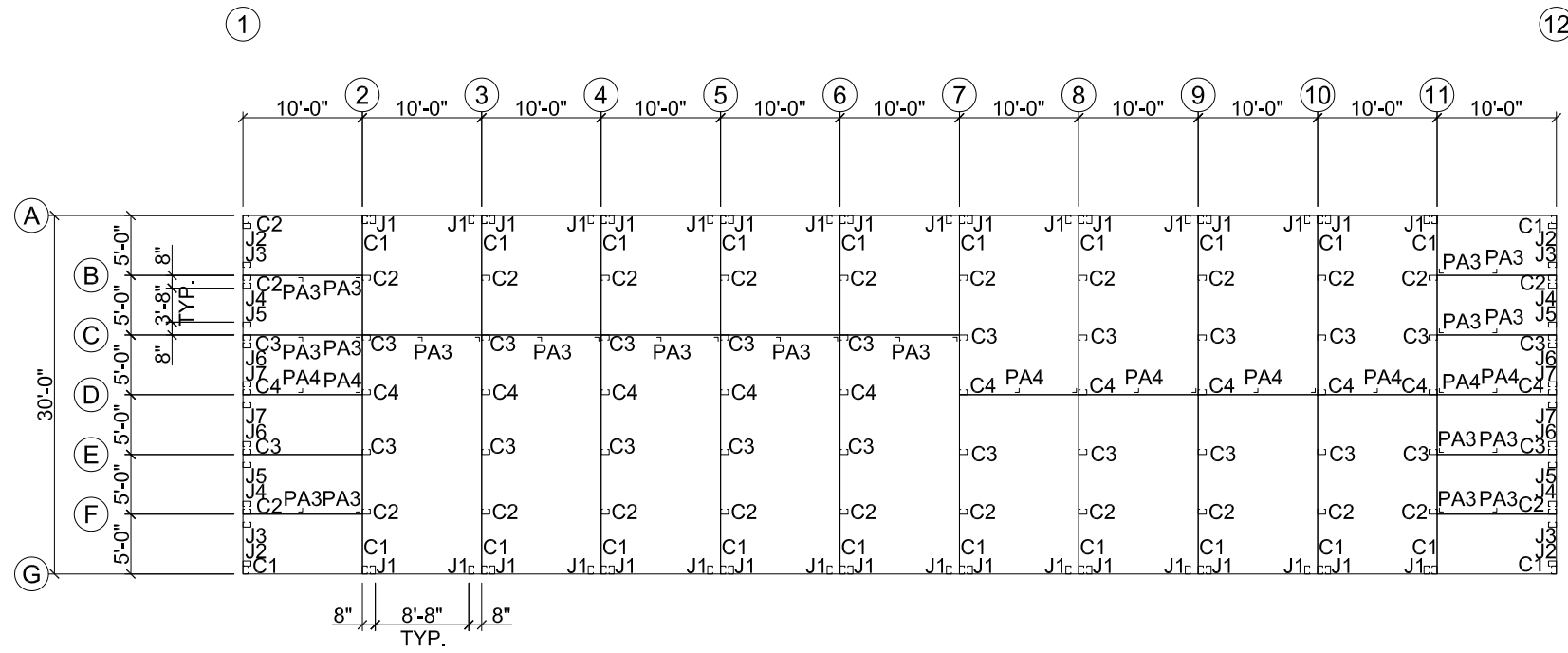
REVISION	DESCRIPTION
10-13-14	For Design

Pre-engineered Buildings
 Self-Storage Facilities
 1304 State Road 209 • CLOVIS, N.M. 88101
 PHONE: (575) 763-1150 FAX: (575) 763-1155

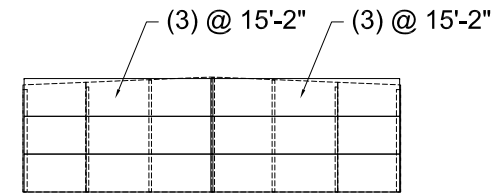
CONFIDENTIAL: THIS DOCUMENT AND THE INFORMATION CONTAINED HEREIN ARE THE PROPERTY OF CMB. UNAUTHORIZED COPYING, DISCLOSURE OR OTHER UNAUTHORIZED USES ARE PROHIBITED.



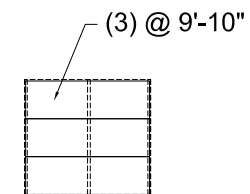
BUILDING B LAYOUT



BUILDING B FRAMING PLAN



PARTITION LINES 2 - 11



**TRANSVERSE PARTITION
TYP. OF 15**

ENGINEER: **T. BLAKE WILSON**
 REGISTERED PROFESSIONAL ENGINEER
 NEW MEXICO
 13174
 DATE: 10-13-14
 SHEET: **SHT # 6 OF 15**

PROJECT INFO:
NORTH COORS STORAGE
615 COORS ROAD NW
ALBUQUERQUE, NM

DESCRIPTION: For Design

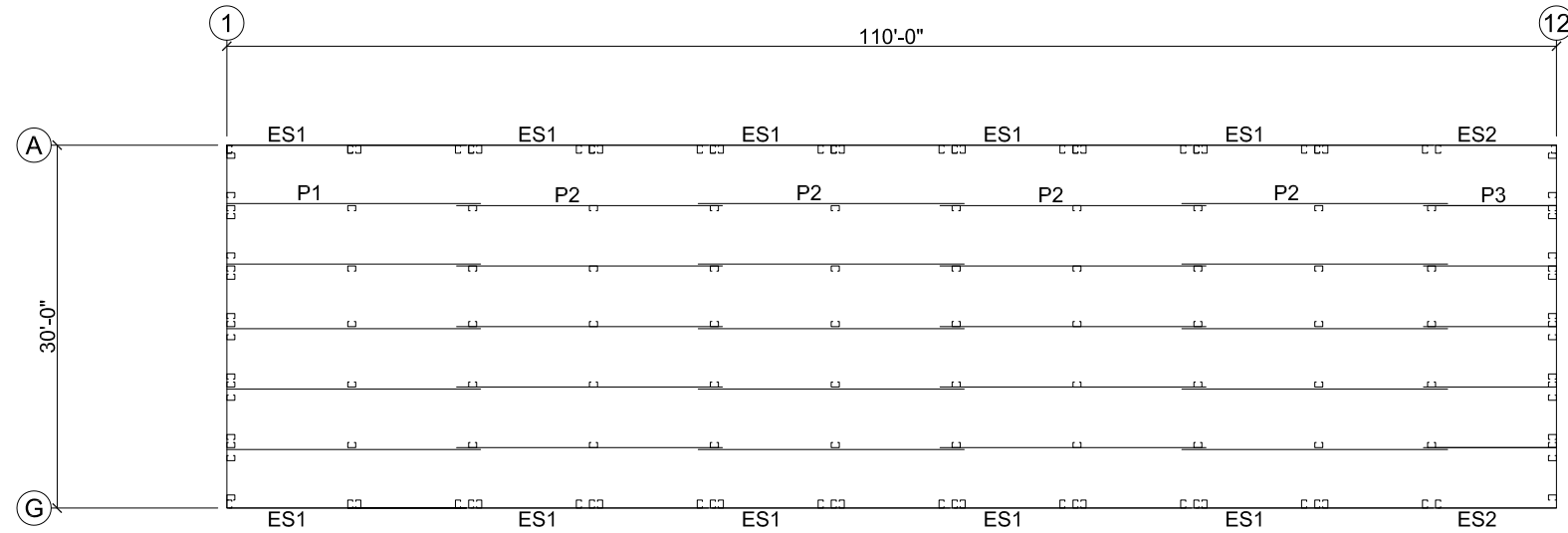
REVISION: 10-13-14

SHEET TITLE: **ROOF FRAMING PLAN**

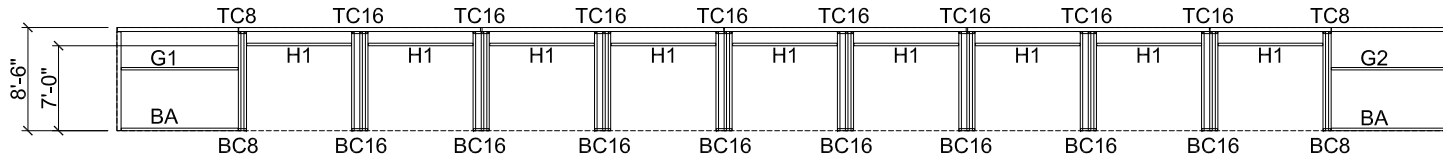
Pre-engineered Buildings
 Self-Storage Facilities
 1304 State Road 209 • CLOVIS, N.M. 88101
 PHONE: (575) 763-1150 FAX: (575) 763-1155

CONFIDENTIAL: THIS DOCUMENT AND THE INFORMATION CONTAINED HEREIN ARE THE PROPERTY OF CMB. UNAUTHORIZED COPYING, DISCLOSURE OR OTHER UNAUTHORIZED USES ARE PROHIBITED.

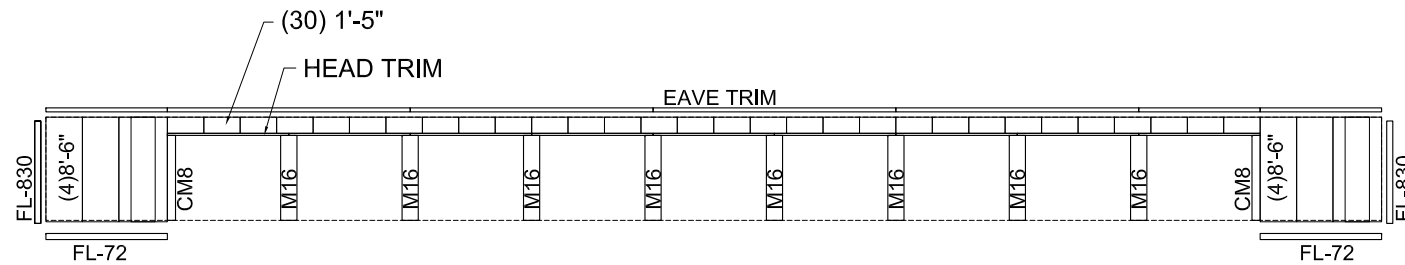
MEMBER SCHEDULE			
C1 THRU C4	COLUMNS	4" x 2 1/2" C 16ga.	H (MAX) = 12'-0" TALL
G1 & G2	GIRTS	4" x 2 1/2" C 16ga.	
BC & TC	BASE CHANNEL	2" L 4 1/8" J 2"	16ga.
	RAKE ANGLE	2" x 4" 16ga.	
PA	ROOF SHEETS	26ga. "PBR" Color	
	WALL SHEETS	26ga. "PBR" Color	
	PARTITION SHEETS	26ga. "PBU" Galv.	
P1, P2 & P3	PURLINS	4" x 2 1/2" Z 16ga.	10'-0" (MAX SPAN)
ES1 & ES2	EAVE STRUT	4" x 4" x 4" 16ga.	
H1-H2	HEADER	4" x 2 1/2" C 16ga.	12'-0" (MAX SPAN)



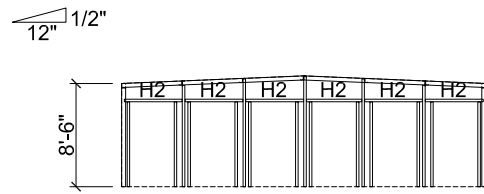
BUILDING B ROOF FRAMING PLAN



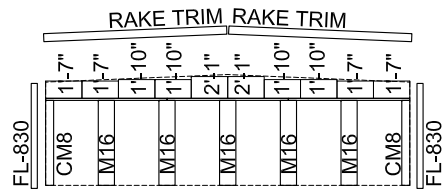
**SIDEWALL FRAMING LINE G
LINE A OPPOSITE**



**SIDEWALL SHEETING LINE G
LINE A OPPOSITE**



**ENDWALL FRAMING LINE 1
LINE 12 OPPOSITE**



**ENDWALL SHEETING LINE 1
LINE 12 OPPOSITE**

ENGINEER: **T. Blake Wilson**
 REGISTERED PROFESSIONAL ENGINEER
 NEW MEXICO
 13174
 DATE: 10-13-14
 SHEET: **SHT # 7 OF 15**

PROJECT INFO:
NORTH COORS STORAGE
 615 COORS ROAD NW
 ALBUQUERQUE, NM

DESCRIPTION: For Design

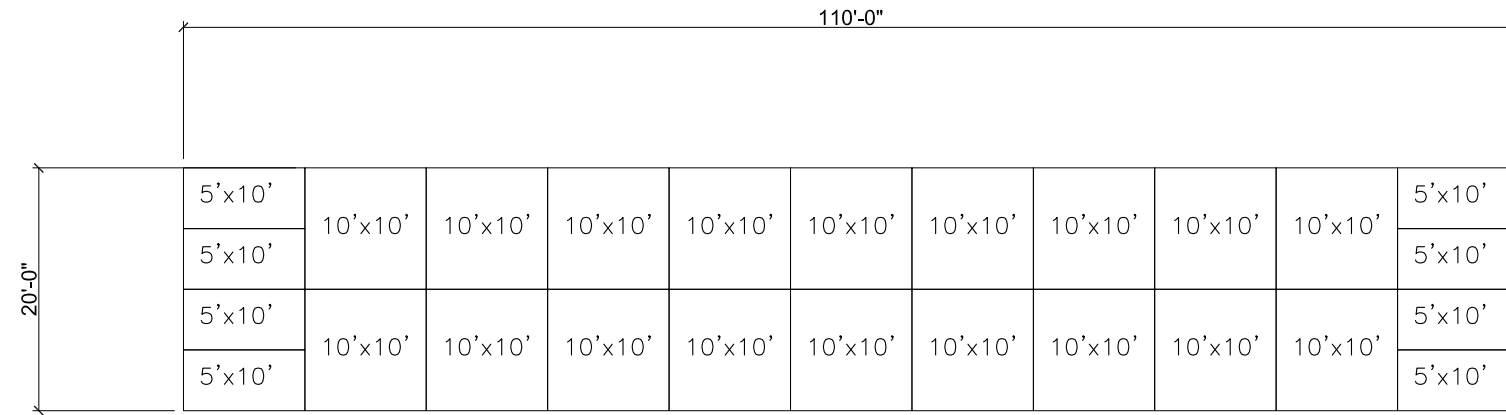
REVISION: 10-13-14

DATE: 10-13-14

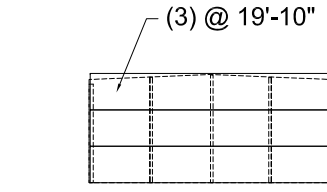
SHEET TITLE: WALL ELEVATIONS

Pre-engineered Buildings
 Self-Storage Facilities
 1304 State Road 209 • CLOVIS, N.M. 88101
 PHONE: (575) 763-1150 FAX: (575) 763-1155

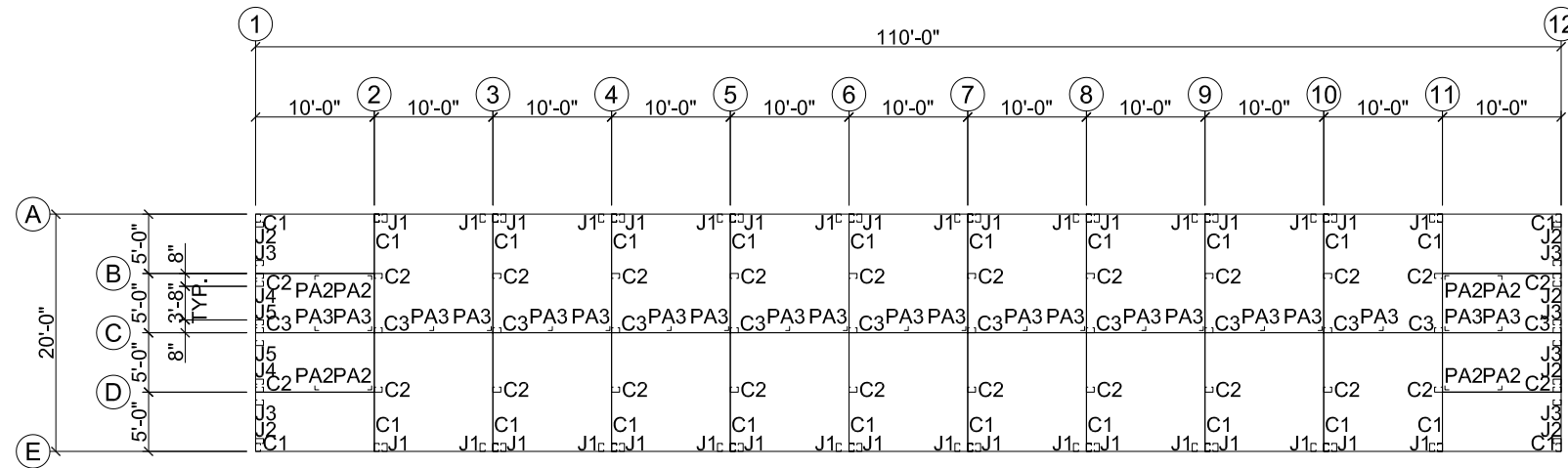
CONFIDENTIAL: THIS DOCUMENT AND THE INFORMATION CONTAINED HEREIN ARE THE PROPERTY OF CMB. UNAUTHORIZED COPYING, DISCLOSURE OR OTHER UNAUTHORIZED USES ARE PROHIBITED.



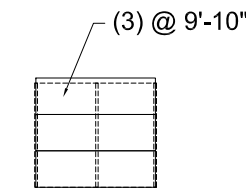
BUILDING C LAYOUT



PARTITION LINES 2 - 11



BUILDING C FRAMING PLAN



**TRANSVERSE PARTITION
TYP. OF 15**

ENGINEER: **T. Blake Wilson**
 REGISTERED PROFESSIONAL ENGINEER
 NEW MEXICO
 13174
 DATE: 10-13-14
 SHEET: **SHT # 8 OF 15**

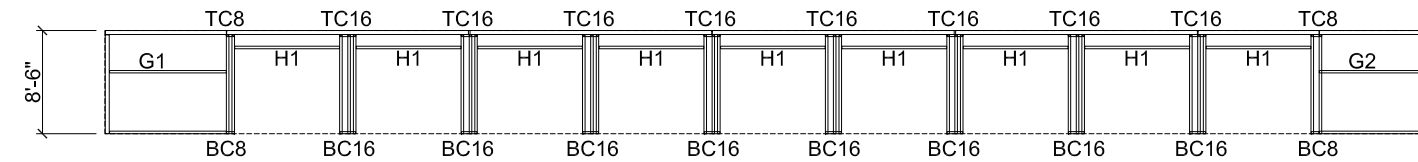
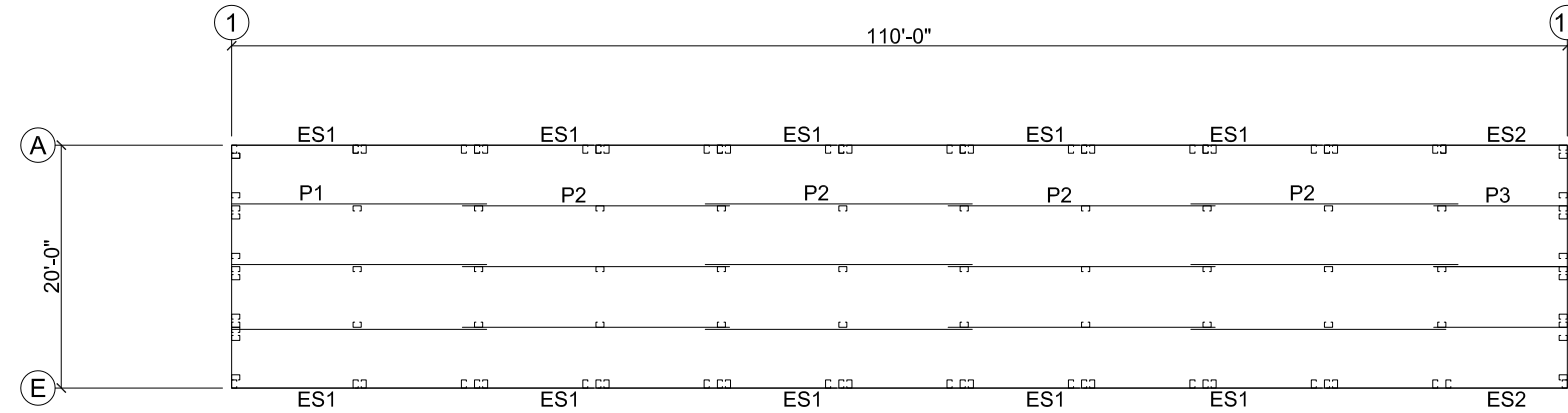
PROJECT INFO:
NORTH COORS STORAGE
615 COORS ROAD NW
ALBUQUERQUE, NM
 SHEET TITLE: Building C

REVISION	DESCRIPTION
10-13-14	For Design

Pre-engineered Buildings
 Self-Storage Facilities
 1304 State Road 209 • CLOVIS, N.M. 88101
 PHONE: (575) 763-1150 FAX: (575) 763-1155

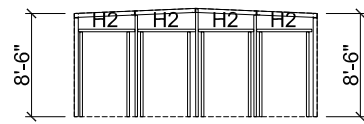
CONFIDENTIAL: THIS DOCUMENT AND THE INFORMATION CONTAINED HEREIN ARE THE PROPERTY OF GMB. UNAUTHORIZED COPYING, DISCLOSURE OR OTHER UNAUTHORIZED USES ARE PROHIBITED.

MEMBER SCHEDULE			
C1 THRU C4	COLUMNS	4" x 2 1/2" C 16ga.	H (MAX) = 12'-0" TALL
G1 & G2	GIRTS	4" x 2 1/2" C 16ga.	
BC & TC	BASE CHANNEL	2" x 4 1/8" x 2" 16ga.	
	RAKE ANGLE	2" x 4" 16ga.	
	ROOF SHEETS	26ga. "PBR" Color	
	WALL SHEETS	26ga. "PBR" Color	
PA	PARTITION SHEETS	26ga. "PBU" Galv.	
	PARTITION ANGLE	2" x 4" 16ga.	
P1, P2 & P3	PURLINS	4" x 2 1/2" Z 16ga.	10'-0" (MAX SPAN)
ES1 & ES2	EAVE STRUT	4" x 4" x 4" 16ga.	
H1-H2	HEADER	4" x 2 1/2" C 16ga.	12'-0" (MAX SPAN)

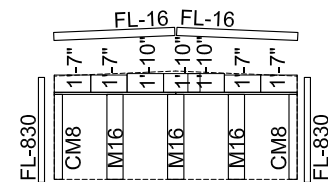


**SIDEWALL FRAMING LINE E
LINE A OPPOSITE**

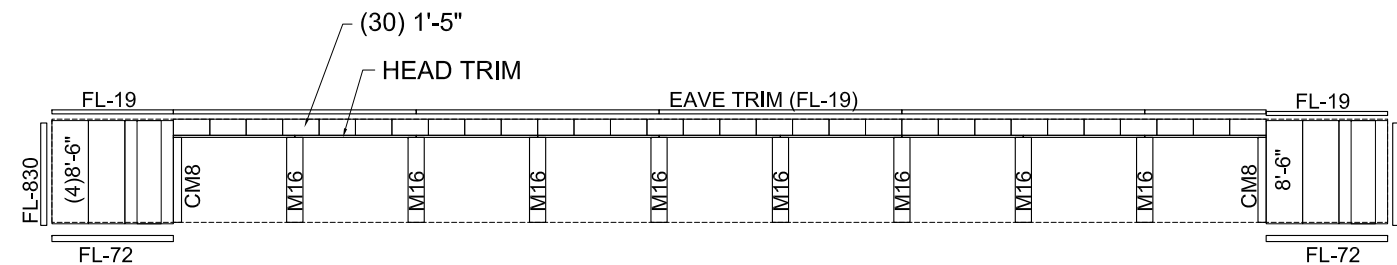
12" = 1/2"



**ENDWALL FRAMING LINE 1
LINE 12 OPPOSITE**



**ENDWALL SHEETING LINE 1
LINE 12 OPPOSITE**



**SIDEWALL SHEETING LINE E
LINE A OPPOSITE**

ENGINEER: **T. BLAKE WILSON**
 REGISTERED PROFESSIONAL ENGINEER
 NEW MEXICO
 13174
T. Blake Wilson
 11/04/14

DATE: 10-13-14
 SHEET: **SHT # 9 OF 15**

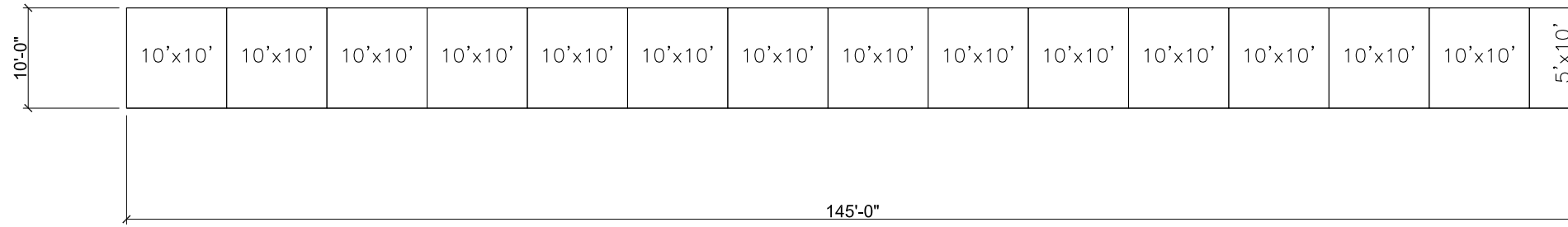
PROJECT INFO:
NORTH COORS STORAGE
615 COORS ROAD NW
ALBUQUERQUE, NM

SHEET TITLE:
 Building C

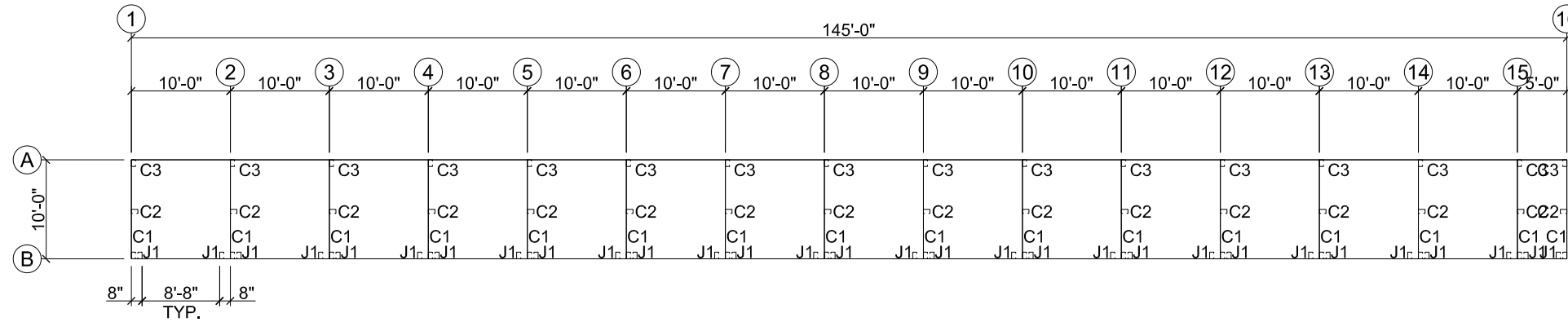
REVISION	DESCRIPTION
10-13-14	For Design

Pre-engineered Buildings
 Self-Storage Facilities
 1304 State Road 209 • CLOVIS, N.M. 88101
 PHONE: (575) 763-1150 FAX: (575) 763-1155

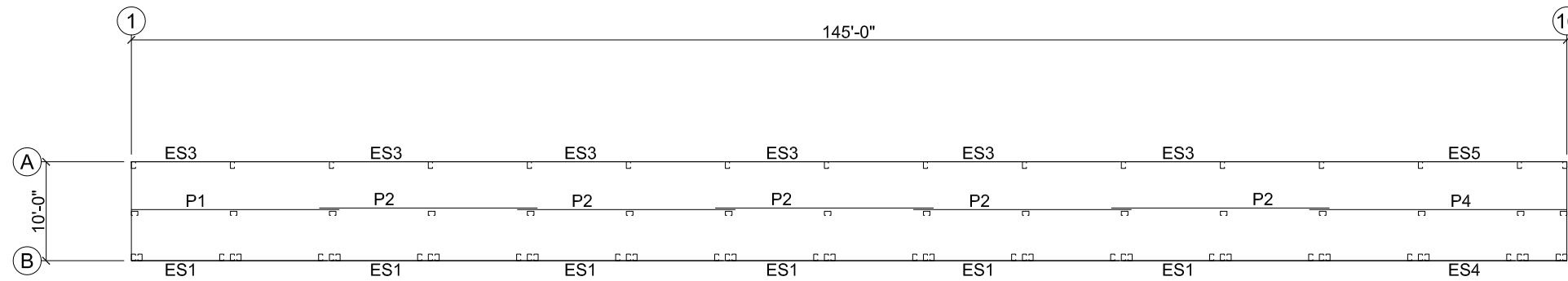
CONFIDENTIAL: THIS DOCUMENT AND THE INFORMATION CONTAINED HEREIN ARE THE PROPERTY OF CMB. UNAUTHORIZED COPYING, DISCLOSURE OR OTHER UNAUTHORIZED USES ARE PROHIBITED.



BUILDING D LAYOUT



BUILDING D FRAMING PLAN



BUILDING D ROOF FRAMING PLAN

ENGINEER: **T. BLAKE WILSON**
 REGISTERED PROFESSIONAL ENGINEER
 NEW MEXICO
 13174
T. Blake Wilson
 11/04/14

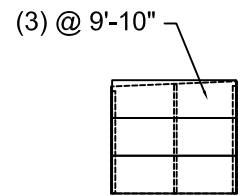
DATE: 10-13-14
 SHEET: SHT # 10 OF 15

PROJECT INFO:
NORTH COORS STORAGE
615 COORS ROAD NW
ALBUQUERQUE, NM
 Building D

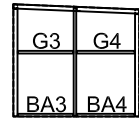
REVISION	DESCRIPTION
10-13-14	For Design

Pre-engineered Buildings
 Self-Storage Facilities
 1304 State Road 209 • CLOVIS, N.M. 88101
 PHONE: (575) 763-1150 FAX: (575) 763-1155

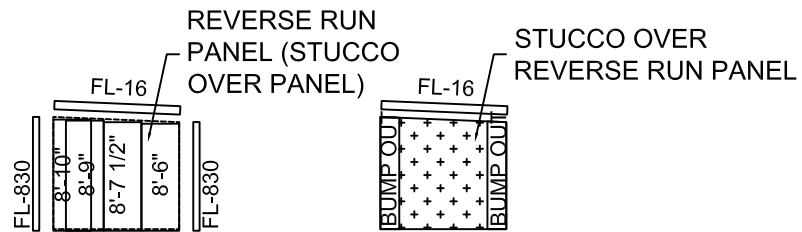
CONFIDENTIAL: THIS DOCUMENT AND THE INFORMATION CONTAINED HEREIN ARE THE PROPERTY OF CMB. UNAUTHORIZED COPYING, DISCLOSURE OR OTHER UNAUTHORIZED USES ARE PROHIBITED.



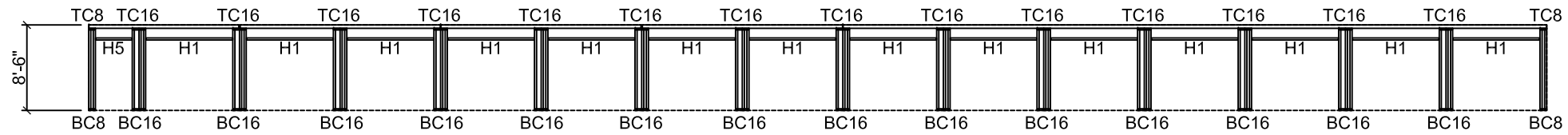
**PARTITION
TYP. OF 14**



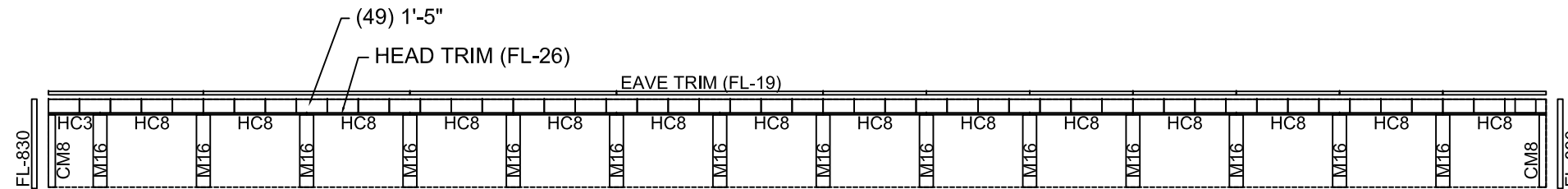
**ENDWALL
FRAMING LINE 1
LINE 16 OPPOSITE**



**ENDWALL SHEETING LINE 1
LINE 16 OPPOSITE**



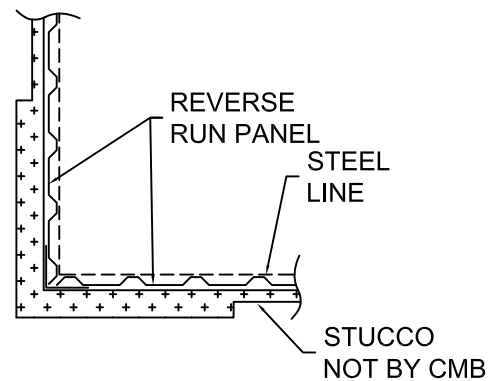
SIDEWALL FRAMING LINE A



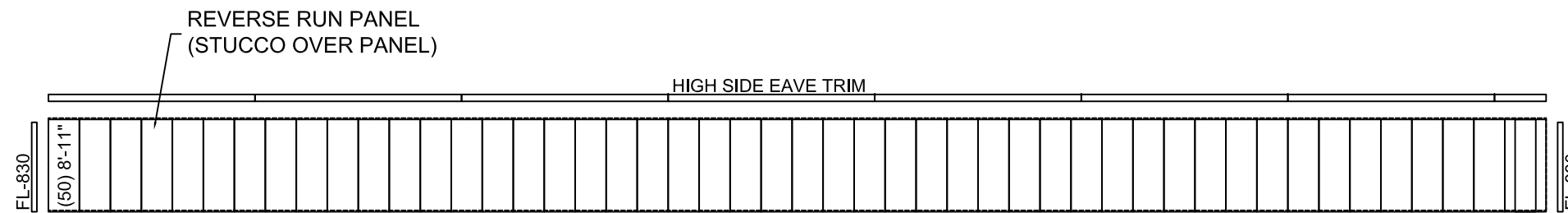
SIDEWALL SHEETING LINE A

G	G	G	G	G	G	G	G	G	G	G	G	G	G	G
BA	BA	BA	BA	BA	BA	BA	BA	BA	BA	BA	BA	BA	BA	BA

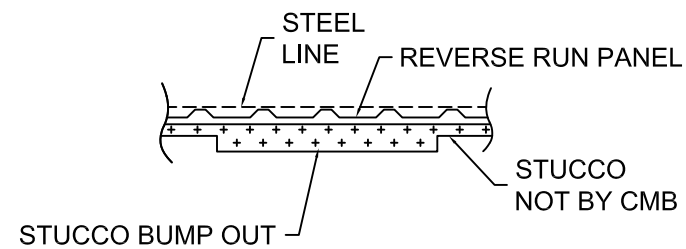
SIDEWALL FRAMING LINE B



SECTION "D"



SIDEWALL SHEETING LINE B



SECTION "E"



SIDEWALL SHEETING LINE B

PROJECT INFO:
NORTH COORS STORAGE
615 COORS ROAD NW
ALBUQUERQUE, NM

REVISION:

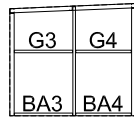
10-13-14	For Design
2-3-15	For Construction

DATE: 10-13-14
SHEET: SHT# 11 OF 15
DATE: 10-13-14
SHEET TITLE: Building D

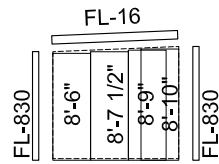
Pre-engineered Buildings
Self-Storage Facilities
 1304 State Road 209 • CLOVIS, N.M. 88101
 PHONE: (575) 763-1150 FAX: (575) 763-1155

CONFIDENTIAL: THIS DOCUMENT AND THE INFORMATION CONTAINED HEREIN ARE THE PROPERTY OF CMB. UNAUTHORIZED COPYING, DISCLOSURE OR OTHER UNAUTHORIZED USES ARE PROHIBITED.

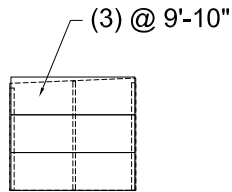
MEMBER SCHEDULE			
C1 THRU C3	COLUMNS	4" x 2 1/2" C 16ga.	H (MAX) = 12'-0" TALL
G1 THRU G4	GIRTS	4" x 2 1/2" C 16ga.	
BC & TC	BASE CHANNEL	2" x 4 7/8" x 2" 16ga.	
	RAKE ANGLE	2" x 4" 16ga.	
	ROOF SHEETS	26ga. "PBR" Color	
	WALL SHEETS	26ga. "PBR" Color	
	PARTITION SHEETS	26ga. "PBU" Galv.	
P1-P3	PURLINS	4" x 2 1/2" Z 16ga.	10'-0" (MAX SPAN)
ES	EAVE STRUT	4" x 4" x 4" 16ga.	
H1	HEADER	4" x 2 1/2" C 16ga.	12'-0" (MAX SPAN)



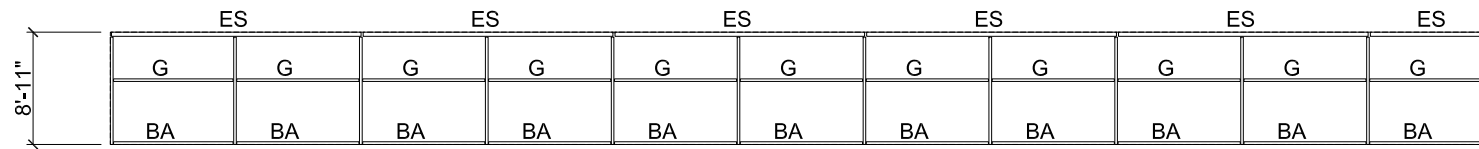
SIDEWALL FRAMING LINE 16
LINE 1 OPPOSITE



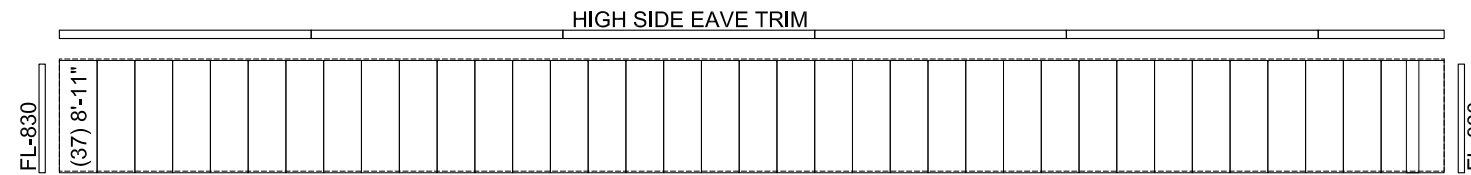
SIDEWALL SHEETING LINE 16
LINE 1 OPPOSITE



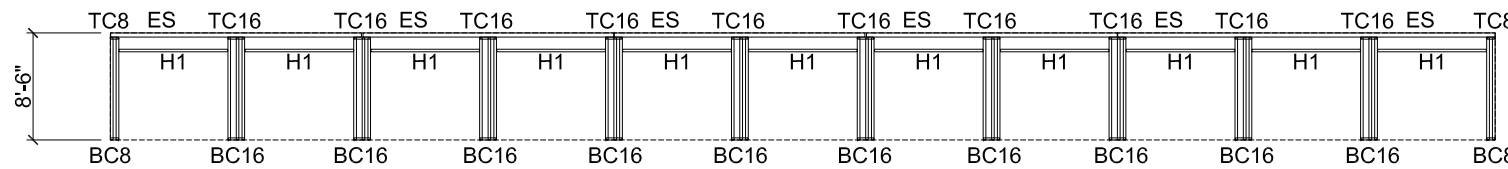
PARTITION
TYP. OF 10



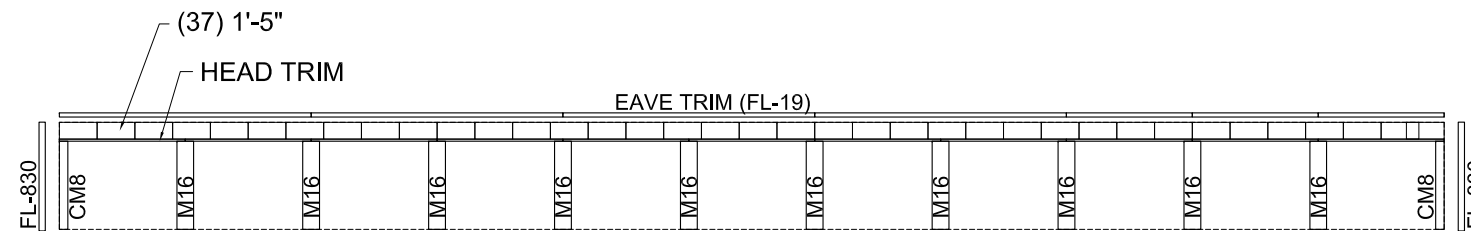
SIDEWALL FRAMING LINE A



SIDEWALL SHEETING LINE A



SIDEWALL FRAMING LINE B



SIDEWALL SHEETING LINE B

ENGINEER: **T. BLAKE WILSON**
NEW MEXICO
REGISTERED PROFESSIONAL ENGINEER
13174
T. Blake Wilson
11/04/14

DATE: 10-13-14
SHEET: SHT# 13 OF 15

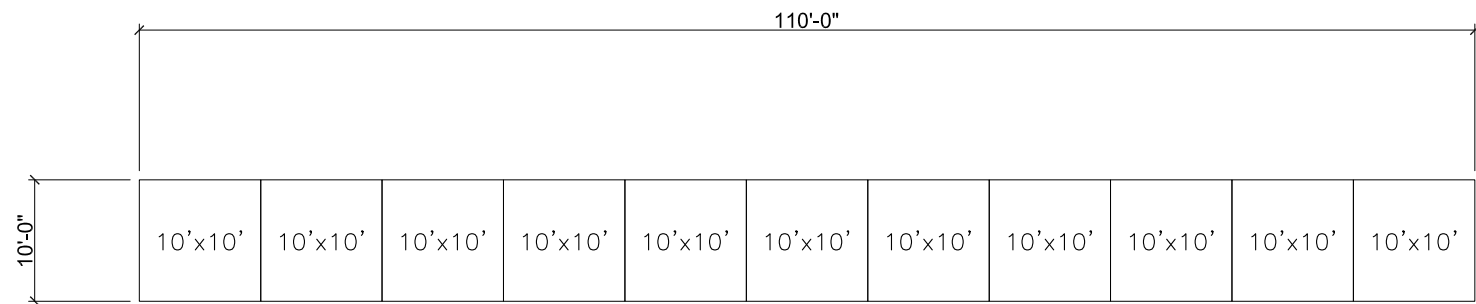
PROJECT INFO:
NORTH COORS STORAGE
615 COORS ROAD NW
ALBUQUERQUE, NM

SHEET TITLE:
Building E

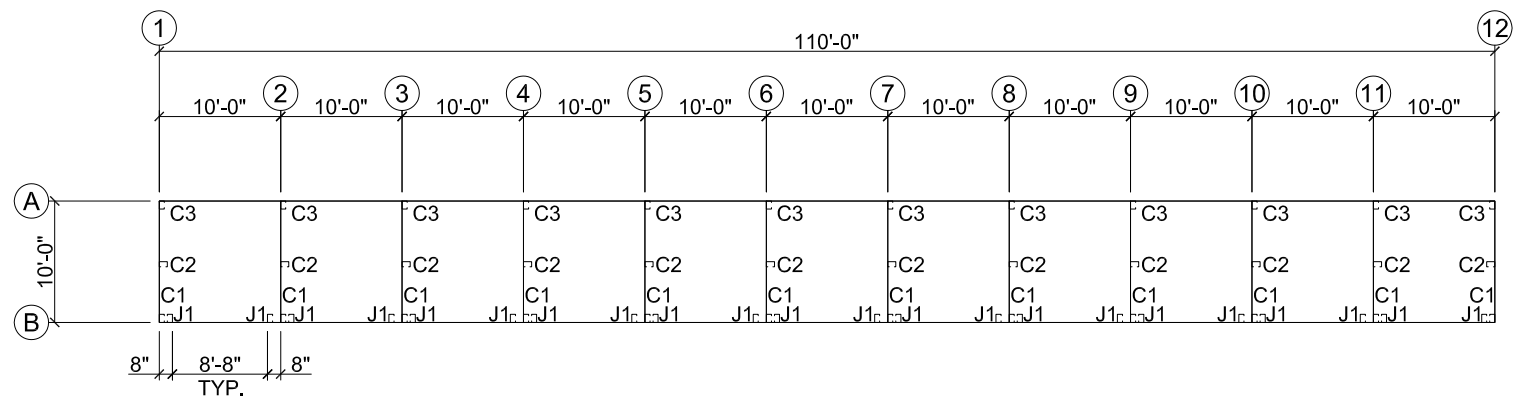
REVISION	DESCRIPTION
10-13-14	For Design

Pre-engineered Buildings
Self-Storage Facilities
1304 State Road 209 • CLOVIS, N.M. 88101
PHONE: (575) 763-1150 FAX: (575) 763-1155

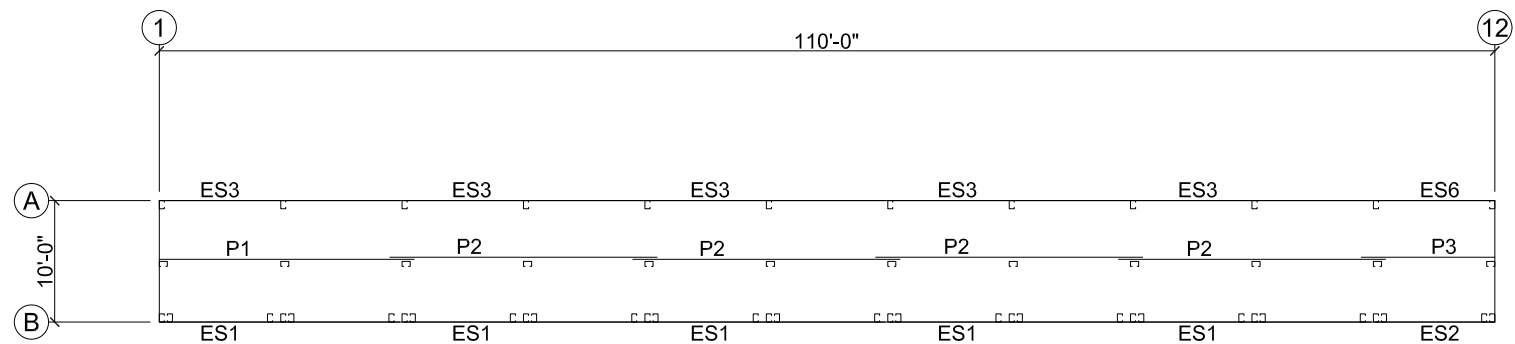
CONFIDENTIAL: THIS DOCUMENT AND THE INFORMATION CONTAINED HEREIN ARE THE PROPERTY OF CMB. UNAUTHORIZED COPYING, DISCLOSURE OR OTHER UNAUTHORIZED USES ARE PROHIBITED.



BUILDING E LAYOUT



BUILDING E FRAMING PLAN



BUILDING E ROOF FRAMING PLAN

ENGINEER: T. BLAKE WILSON
 REGISTERED PROFESSIONAL ENGINEER
 NEW MEXICO
 13174
 T. Blake Wilson
 11/04/14

DATE: 10-13-14
 SHEET: SHT # 13 OF 15

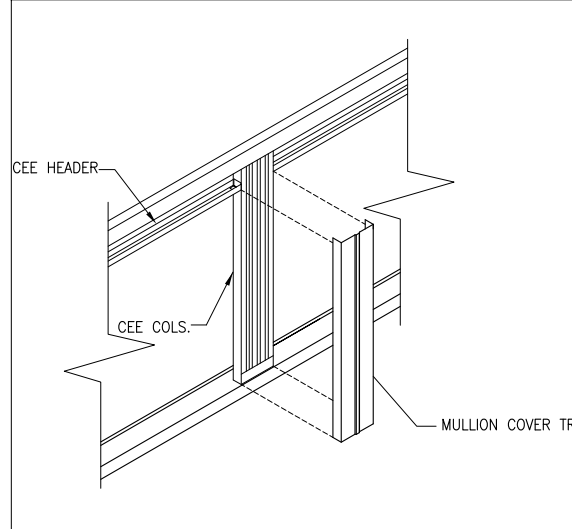
PROJECT INFO:
NORTH COORS STORAGE
 615 COORS ROAD NW
 ALBUQUERQUE, NM

SHEET TITLE:
 Building E

REVISION	DESCRIPTION
10-13-14	For Design

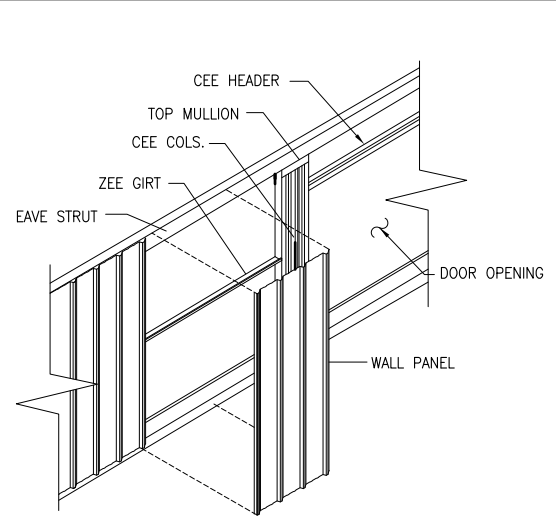
Pre-engineered Buildings
 Self-Storage Facilities
 1304 State Road 209 • CLOVIS, N.M. 88101
 PHONE: (575) 763-1150 FAX: (575) 763-1155

CONFIDENTIAL: THIS DOCUMENT AND THE INFORMATION CONTAINED HEREIN ARE THE PROPERTY OF CMB. UNAUTHORIZED COPYING, DISCLOSURE OR OTHER UNAUTHORIZED USES ARE PROHIBITED.



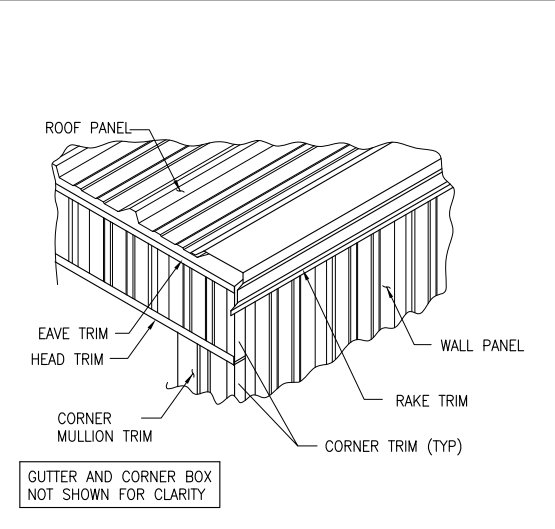
MULLION DETAIL
 SCALE: 1 1/2"=1'-0"

6



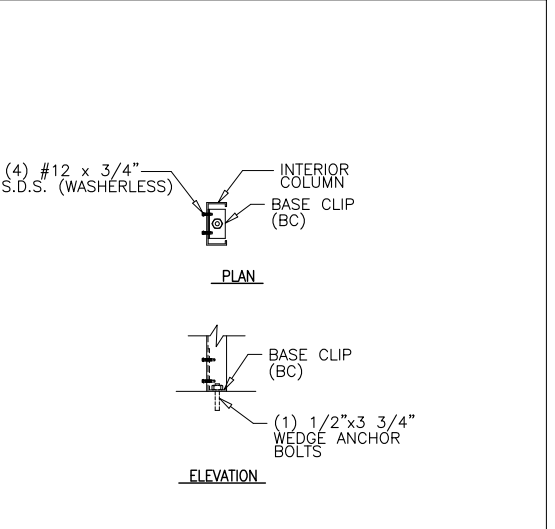
WALL PANEL DETAIL
 SCALE: 1 1/2"=1'-0"

7



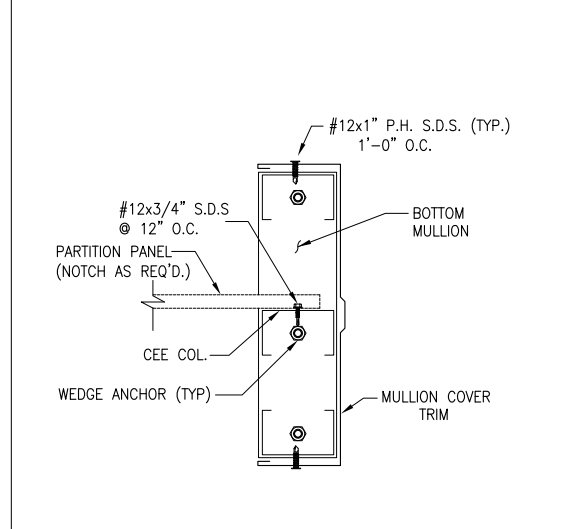
BUILDING CORNER TYP. TRIM DETAIL
 SCALE: 1 1/2"=1'-0"

8



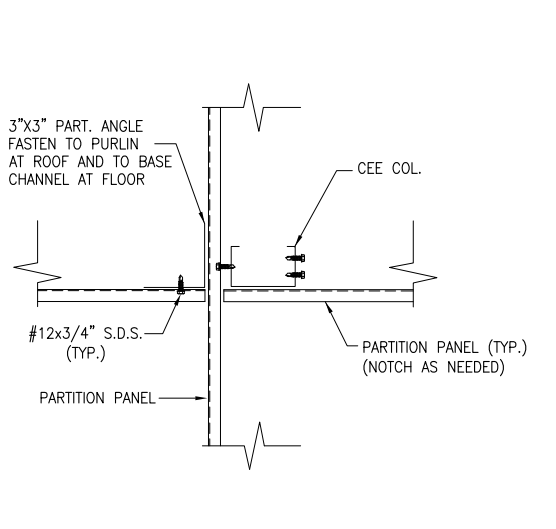
INTERIOR COLUMN ANCHORAGE DETAIL
 SCALE: 1 1/2"=1'-0"

9



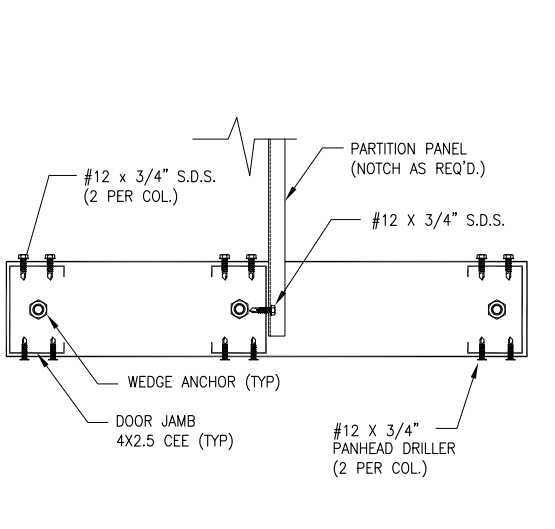
PIER CONNECTION DETAIL
 SCALE: 1 1/2"=1'-0"

10



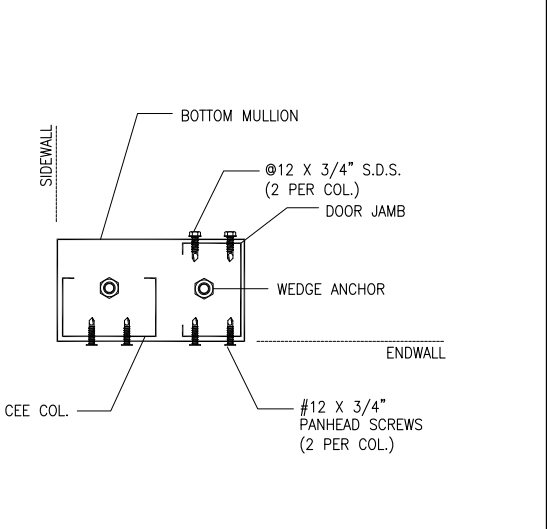
PARTITION/DIVIDER DETAIL
 SCALE: 1 1/2"=1'-0"

11



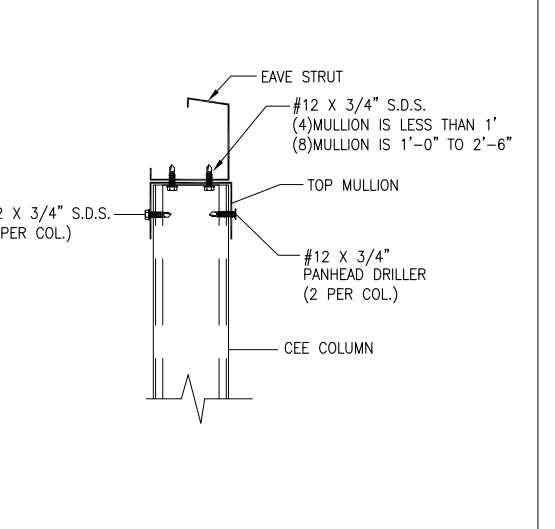
STRUCTURAL PIER DETAIL
 SCALE: 1 1/2"=1'-0"

12



CORNER PIER STRUCTURAL DETAIL
 SCALE: 1 1/2"=1'-0"

13



EAVE STRUT SECTION DETAIL
 SCALE: 1 1/2"=1'-0"

14

PROJECT INFO:
NORTH COORS STORAGE
615 COORS ROAD NW
ALBUQUERQUE, NM

DESCRIPTION: For Design

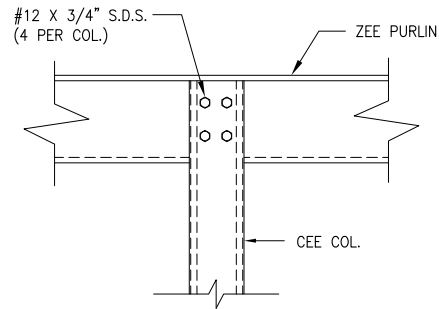
REVISION: 10-8-14

SHEET TITLE: DETAILS

Pre-engineered Buildings
 Self-Storage Facilities
 1304 State Road 209 • CLOVIS, N.M. 88101
 PHONE: (575) 763-1150 FAX: (575) 763-1155

CONFIDENTIAL: THIS DOCUMENT AND THE INFORMATION CONTAINED HEREIN ARE THE PROPERTY OF CMB. UNAUTHORIZED COPYING, DISCLOSURE OR OTHER UNAUTHORIZED USES ARE PROHIBITED.

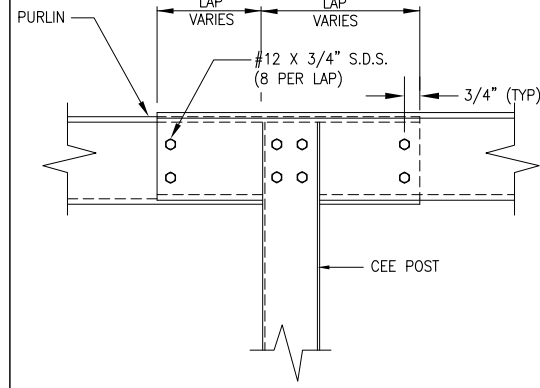




PURLIN COLUMN CONNECTION DETAIL

SCALE: 1 1/2"=1'-0"

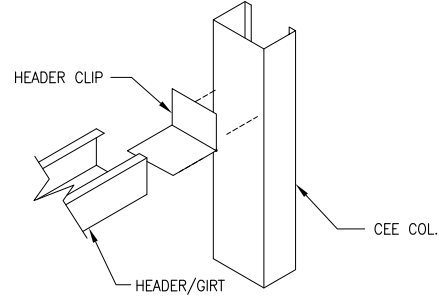
15



PURLIN LAP DETAIL

SCALE: 1 1/2"=1'-0"

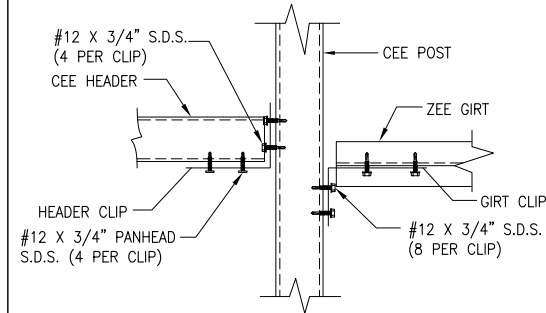
16



HEADER/GIRT CONNECTION DETAIL

SCALE: 1 1/2"=1'-0"

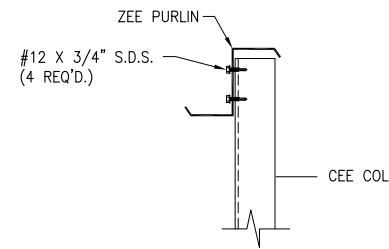
17



HEADER/GIRT CONNECTION VIEW DETAIL

SCALE: 1 1/2"=1'-0"

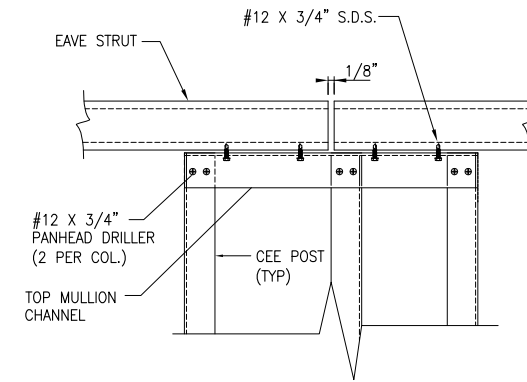
18



PURLIN ATTACHMENT SECTION DETAIL

SCALE: 1 1/2"=1'-0"

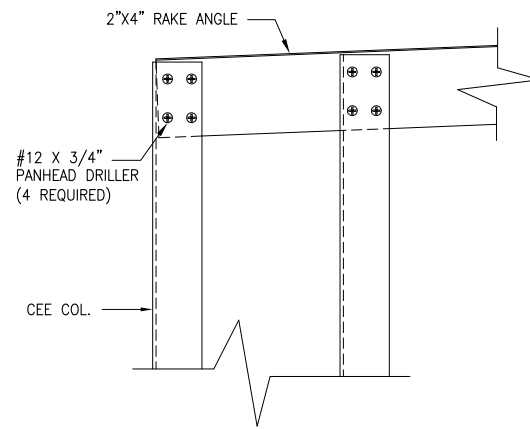
20



EAVE STRUT/PIER ASSEMBLY DETAIL

SCALE: 1 1/2"=1'-0"

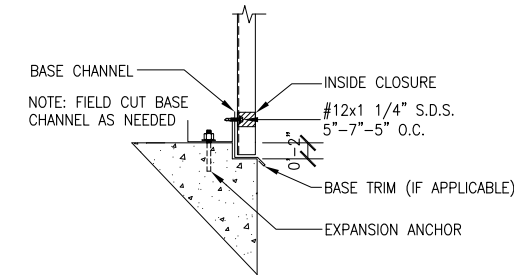
21



RAKE ANGLE DETAIL

SCALE: 1 1/2"=1'-0"

24



DETAIL AT SHEETING NOTCH

SCALE: 1 1/2"=1'-0"

25

ENGINEER: T. BLAKE WILSON
 REGISTERED PROFESSIONAL ENGINEER
 NEW MEXICO
 13174
 T. Blake Wilson
 11/04/14

DATE: 10-13-14
 SHEET: SHT # 15 OF 15

PROJECT INFO:
NORTH COORS STORAGE
615 COORS ROAD NW
ALBUQUERQUE, NM

DESCRIPTION: For Design

REVISION: 10-8-14

SHEET TITLE: DETAILS

Pre-engineered Buildings
 Self-Storage Facilities
 1304 State Road 209 • CLOVIS, N.M. 88101
 PHONE: (575) 763-1150 FAX: (575) 763-1155

CONFIDENTIAL: THIS DOCUMENT AND THE INFORMATION CONTAINED HEREIN ARE THE PROPERTY OF CMB. UNAUTHORIZED COPYING, DISCLOSURE OR OTHER UNAUTHORIZED USES ARE PROHIBITED.