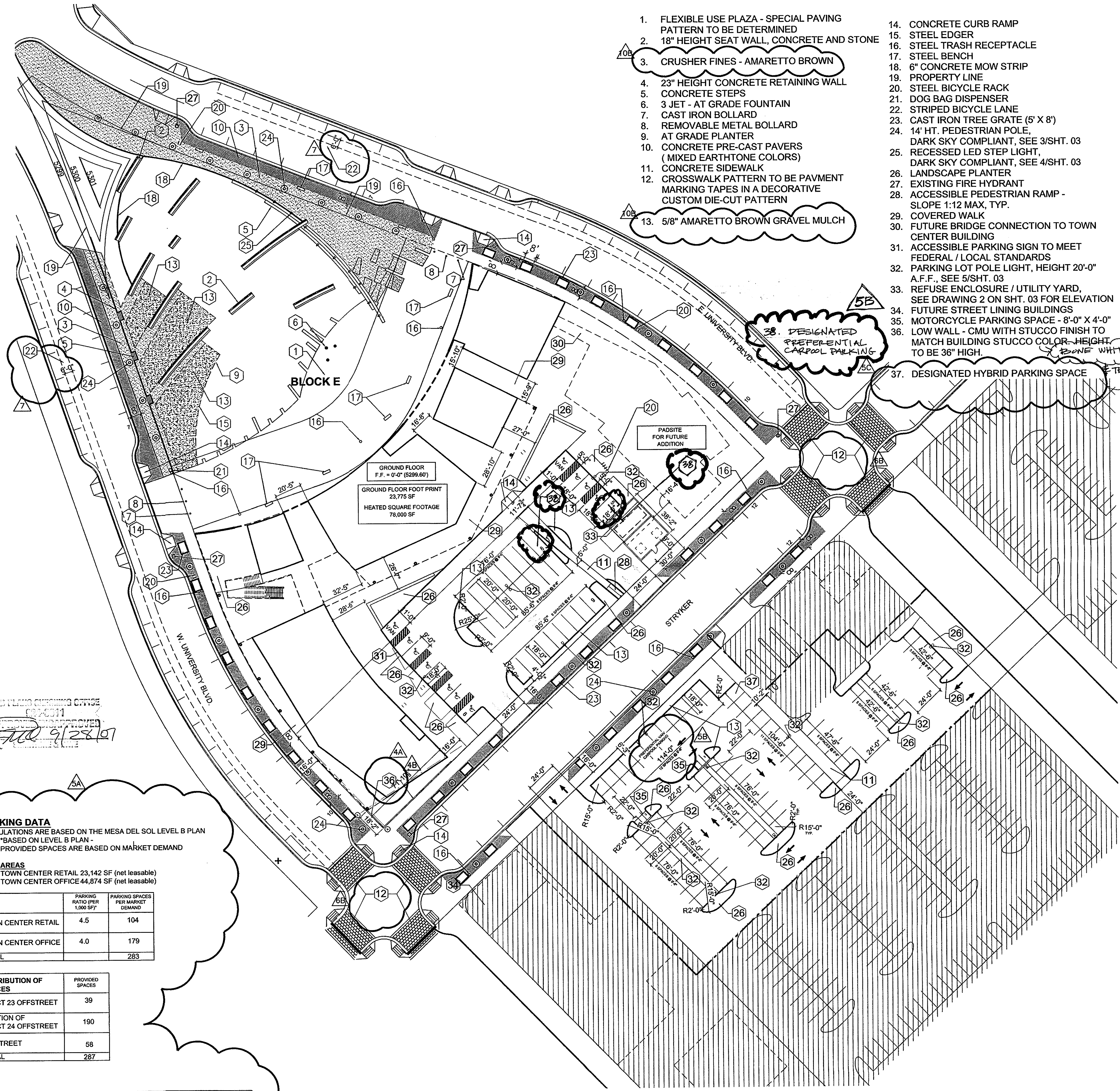


KEYED NOTES:

1. FLEXIBLE USE PLAZA - SPECIAL PAVING PATTERN TO BE DETERMINED
2. 18" HEIGHT SEAT WALL, CONCRETE AND STONE
3. CRUSHER FINES - AMARETTO BROWN
4. 23" HEIGHT CONCRETE RETAINING WALL
5. CONCRETE STEPS
6. 3 JET - AT GRADE FOUNTAIN
7. CAST IRON BOLLARD
8. REMOVABLE METAL BOLLARD
9. AT GRADE PLANTER
10. CONCRETE PRE-CAST PAVERS (MIXED EARTHTONE COLORS)
11. CONCRETE SIDEWALK
12. CROSSWALK PATTERN TO BE PAVMENT MARKING TAPES IN A DECORATIVE CUSTOM DIE-CUT PATTERN
13. 5/8" AMARETTO BROWN GRAVEL MULCH
14. CONCRETE CURB RAMP
15. STEEL EDGER
16. STEEL TRASH RECEPTACLE
17. STEEL BENCH
18. 6" CONCRETE MOW STRIP
19. PROPERTY LINE
20. STEEL BICYCLE RACK
21. DOG BAG DISPENSER
22. STRIPED BICYCLE LANE
23. CAST IRON TREE GRATE (5' X 8')
24. 14' HT. PEDESTRIAN POLE, DARK SKY COMPLIANT, SEE 3/SHT. 03
25. RECESSED LED STEP LIGHT, DARK SKY COMPLIANT, SEE 4/SHT. 03
26. LANDSCAPE PLANTER
27. EXISTING FIRE HYDRANT
28. ACCESSIBLE PEDESTRIAN RAMP - SLOPE 1:12 MAX, TYP.
29. COVERED WALK
30. FUTURE BRIDGE CONNECTION TO TOWN CENTER BUILDING
31. ACCESSIBLE PARKING SIGN TO MEET FEDERAL / LOCAL STANDARDS
32. PARKING LOT POLE LIGHT, HEIGHT 20'-0" A.F.F., SEE 5/SHT. 03
33. REFUSE ENCLOSURE / UTILITY YARD, SEE DRAWING 2 ON SHT. 03 FOR ELEVATION
34. FUTURE STREET LINING BUILDINGS
35. MOTORCYCLE PARKING SPACE - 8'-0" X 4'-0" LOW WALL - CMU WITH STUCCO FINISH TO MATCH BUILDING STUCCO COLOR - HEIGHT TO BE 36" HIGH
36. DESIGNATED PREFERENTIAL CARPOOL PARKING
37. DESIGNATED HYBRID PARKING SPACE



PROJECT NUMBER: #1004873
Application Number: 07DRB-70283

This plan is consistent with the specific Site Development Plan approved by the Environmental Planning Commission (EPC), dated 6/23/06 and the Findings and Conditions in the Official Notification of Decision are satisfied.

Is an Infrastructure List required? () Yes () No If yes, then a set of approved DRC plans with a work order is required for any construction within Public Right-of-Way or for construction of public improvements.

DRB SITE DEVELOPMENT PLAN SIGNOFF APPROVAL:

<i>[Signature]</i> Traffic Engineering/Transportation Division Roger A. Shwan Water-Utility-Department / F.B.C.S.A.	6-17-07 Date
<i>[Signature]</i> Parks and Recreation Department Christina Sandoval	10/17/07 Date
<i>[Signature]</i> City Engineer Bradley L. Bingham	12/10/07 Date
<i>[Signature]</i> Solid Waste Management Michael Holten (3rd Compaction)	9/28/07 Date
<i>[Signature]</i> DRB Chairperson, Planning Department Catalina Lehner-10-16-07	12/10/07 Date

PARKING DATA
 CALCULATIONS ARE BASED ON THE MESA DEL SOL LEVEL B PLAN
 *BASED ON LEVEL B PLAN - PROVIDED SPACES ARE BASED ON MARKET DEMAND

AREAS
 TOWN CENTER RETAIL 23,142 SF (net leasable)
 TOWN CENTER OFFICE 44,874 SF (net leasable)

	PARKING RATIO PER 1,000 SF*	PARKING SPACES PER MARKET DEMAND
TOWN CENTER RETAIL	4.5	104
TOWN CENTER OFFICE	4.0	179
TOTAL		283

DISTRIBUTION OF SPACES	PROVIDED SPACES
TRACT 23 OFFSTREET	39
PORTION OF TRACT 24 OFFSTREET	190
ON STREET	58
TOTAL	287

REQUIRED ACCESSIBLE SPACES	PROVIDED ACCESSIBLE SPACES	Rq. Bike Spaces	Prov. Bike Spaces	Motorcycle spaces	Preferential Car/Van Pool Spaces
8	12	14	20	6	12

design architect
antoine predock architect PC
 300 12th street nw
 albuquerque, nm 87102
 505 843 7390 p
 505 243 6254 f

executive architect
jon anderson architect
 912 roma avenue nw
 albuquerque, nm 87102
 505 764 8306 p
 505 764 2879 f

landscape architect
edaw inc
 1809 blake street
 suite 200
 denver, co 80202
 303 595 4522 p
 303 595 4434 f

civil
urs
 6501 americas parkway ne
 suite 900
 albuquerque, nm 87110
 505 855 7500 p
 505 855 7555 f

PROJECT # 1004873

**MESA DEL SOL
 COMMUNITY CENTER
 BUILDING A
 ALBUQUERQUE, NEW MEXICO**

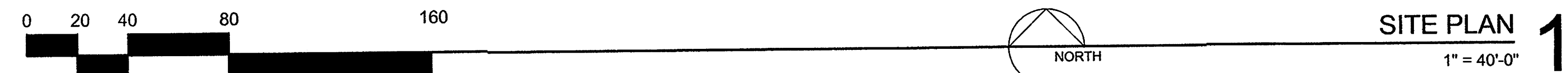
DRB SUBMITTAL

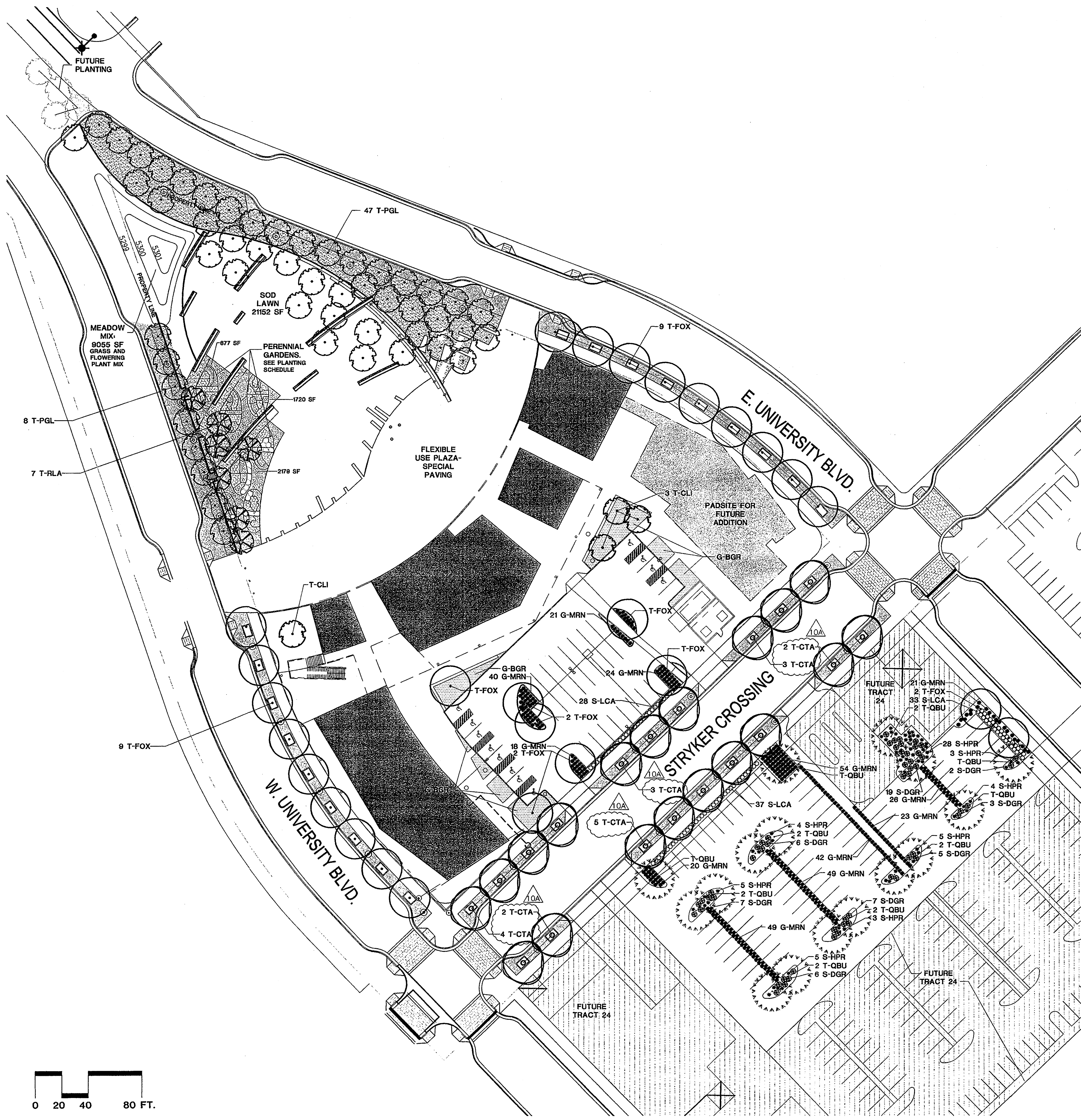
STATE OF NEW MEXICO
[Signature]
JON ANDERSON
 No. 1100
 9/25/07
 REGISTERED ARCHITECT

DATE: SEPTEMBER 25, 2007

SHEET TITLE:
 SITE DEVELOPMENT PLAN
 FOR BUILDING PERMIT
 SHEET NUMBER:

01





PLANT SCHEDULE

DECIDUOUS TREES							
Abbr.	No.	Genus	Species	Common Name	Min. Size	Min. Spacing	Notes
T-CL	4	Chilopsis	linearis	Desert Willow	24" box	as shown	*
T-CTA	19	Chitalpa	tashkentensis	Chitalpa	2.5" cal.	as shown	* replace with R. pseudoacacia
T-FOX	27	Fraxinus	oxycarpa	Roywood Ash	2.5" cal.	as shown	
T-PGL	55	Prosopis	glandulosa	Honey Mesquite	2.5" cal.	as shown	
T-QBU	16	Quercus	buckleyi	Texas Red Oak	2.5" cal.	as shown	
T-RLA	7	Rhus	lanceolata	Prairie Flameleaf Sumac	24" box	as shown	
T-RPS	-	Robinia	pseudoacacia	Black Locust	2.5" cal.	as shown	

DECIDUOUS SHRUBS							
Abbr.	No.	Genus	Species	Common Name	Min. Size	Min. Spacing	Notes
S-ATH	8	Anisacanthus	thurberi	Chuparosa	5 GAL	as shown	
S-DFO	11	Dolea	formosa	Feather Dolea	5 GAL	as shown	
S-DGR	55	Dolea	greggii	Trailing Indigo Bush	5 GAL	as shown	
S-GSA	19	Gutierrezia	sarothrae	Sierra Negra	5 GAL	as shown	
S-HPR	61	Hesperaloe	pervillora	Red Yucca	5 GAL	as shown	
S-KLA	24	Krascheninnikovia	lanata	Winterfat	5 GAL	as shown	
S-LCA	98	Leucophyllum	candidum	Thunder Cloud Silverleaf Ranger	5 GAL	as shown	

PERENNIALS							
Abbr.	No.	Genus	Species	Common Name	Min. Size	Min. Spacing	Notes
P-AFR	18	Abronia	fragrans	Sand Verbena	1 GAL	as shown	*
P-ACO	43	Aconitum	columbianum	Monkshood	1 GAL	as shown	*
P-ACE	25	Allium	cernuum	Nodding Onion	1 GAL	as shown	*
P-AL	32	Aquilegia	alpina	Alpine Columbine	1 GAL	as shown	*
P-AO	36	Aster	oolongensis	Sky-blue Aster	1 GAL	as shown	*
P-BMU	17	Baileya	multiradiata	Desert Marigold	1 GAL	18" O.C.	* meadow mix
P-CSC	21	Camassia	scilloides	Wild Hyacinth	1 GAL	as shown	*
P-CIN	25	Castilleja	integra	Indian Paintbrush	1 GAL	as shown	*
P-CMO	30	Centaurea	montana	Corn Flower	1 GAL	as shown	*
P-DFL	38	Delosperma	floribundum	Starburst Iceplant	1 GAL	as shown	*
P-EPU	32	Echinacea	purpurea	Purple Coneflower	1 GAL	18" O.C.	*
P-EDI	40	Erigeron	divergens	Fleabane Daisy	1 GAL	as shown	*
P-GPU	37	Gaillardia	pulchella	Blanket Flower	1 GAL	as shown	meadow mix
P-GAL	20	Gentiana	algida	Gentian	1 GAL	as shown	*
P-HPE	24	Helianthus	petiolaris	Plains Sunflower	1 GAL	as shown	*
P-HDE	16	Hibiscus	denudatus	Desert Rose-mallow	1 GAL	as shown	*
P-KOD	16	Kniphofia	corallina	Torch Lily	1 GAL	as shown	*
P-LPU	25	Liatris	punctata	Gayfeather	1 GAL	as shown	*
P-MLI	12	Mentzelia	lindleyi	Blazing Star	1 GAL	as shown	meadow mix
P-MCA	30	Mimulus	cardinalis	Crimson Monkeyflower	1 GAL	as shown	*
P-MMU	42	Mirabilis	multiflora	4 o'clock	1 GAL	as shown	*
P-MME	20	Monarda	menthaefolia	Bee Balm	1 GAL	as shown	*
P-NXF	26	Nepeta	x fausseni	Catmint	1 GAL	as shown	*
P-PSP	15	Penstemon	barbatulus	Scarley Bugler Penstemon	1 GAL	18" O.C.	meadow mix
P-PST	15	Penstemon	strictus	Penstemon	1 GAL	as shown	* meadow mix
P-PPU	15	Petalostemum	purpureum	Purple Prairie Clover	1 GAL	as shown	*
P-RCO	16	Ratibida	columifera	Prairie Coneflower	1 GAL	as shown	meadow mix
P-ROF	18	Rosmarinus	officinalis	Rosemary	1 GAL	as shown	*
P-SDO	16	Salvia	dorrii	Desert Sage	1 GAL	as shown	*
P-SPI	23	Stanleya	pinnata	Prince's Plume	1 GAL	as shown	*
P-VSP	28	Veronica	spicata	Red Fox Speedwell	1 GAL	as shown	*
P-WSC	12	Wyethia	scabra	Desert Mule's Ear	1 GAL	as shown	*

ORNAMENTAL GRASSES							
Abbr.	No.	Genus	Species	Common Name	Min. Size	Min. Spacing	Notes
G-AMO	91	Achillea	montana	Mountain Kidney Vetch	1 GAL	as shown	
G-ASMI	65	Angropyron	smithii	Western Wheatgrass	1 GAL	as shown	
G-BER	86	Bouteloua	eripoda	Black Grama	1 GAL	as shown	meadow mix
G-BGR	49	Bouteloua	gracilis	Blue Grama	1 GAL	as shown	meadow mix
G-BMI	89	Briza	minor	Big Quaking Grass	1 GAL	as shown	*
G-CMI	23	Carex	microptera	Smoothing Sedge	1 GAL	as shown	*
G-HIA	58	Hilaria	jamesii	Galleta	1 GAL	as shown	*
G-MEM	84	Muhlenbergia	emersleyi 'El Toro'	Bull Grass	1 GAL	as shown	*
G-MRN	388	Muhlenbergia	rigida 'Nashville'	Purple Muhly	1 GAL	as shown	*
G-PVI	102	Panicum	virgatum	Switchgrass	1 GAL	as shown	*
G-SSC	-	Schizachrium	scoparium	Little Bluestem	1 GAL	as shown	*

GROUND COVER - SOD							
Abbr.	No.	Genus	Species	Common Name	Min. Size	Min. Spacing	Notes
PPR	-	Poa	pratensis	Kentucky Bluegrass			sod lawn

NOTES:

- QUANTITIES IN THE SCHEDULE ARE FOR REFERENCE ONLY. CONTRACTOR SHALL VERIFY ALL QUANTITIES ON PLANS.
- MEADOW SEED MIX = 50% SOUTHWEST NATIVE GRASS MIXTURE (4 LBS./ACRE), 50% SOUTHWEST NATIVE WILDFLOWER MIXTURE (8 LBS./ACRE), BOTH AS SUPPLIED BY APPLEWOOD SEED CO..
- AN AUTOMATIC IRRIGATION SYSTEM SHALL BE PROVIDED.
- LANDSCAPE MAINTENANCE SHALL BE PROVIDED BY PARCEL OWNER.
- THIS LANDSCAPE PLAN COMPLIES WITH THE WATER CONSERVATION ORDINANCE AND ARTICLE 6-1-1-1.
- THERE ARE NO EXISTING TREES OR SHRUBS ON THE SITE. ALL PLANTS SHOWN ARE PROPOSED.
- PLANTS NOTED WITH "*" ARE SENSITIVE TO SALT AND ARE SUBJECT TO CHANGE IF FUTURE NON-POTABLE WATER IS HIGH IN SALTS.

TALL FESCUE BLEND SOD
10.12.2007

LANDSCAPE CALCULATIONS:

Tract 23: PARK & BUILDING A
 Site Area: 92,767 SF
 Landscape Area Requirement: 13,915 SF [15% Net Site Area]
 Provided Landscape Area: 43,341 SF [47% Net Site Area]
 Turf Area: 21,152 SF, [23% Net Site Area]

Portion of Tract 24: PARKING LOT
 Site Area: 38,676 SF
 Landscape Area Requirement: 5,801 SF [15% Net Site Area]
 Provided Landscape Area: 5,884 SF [15% Net Site Area]

Total Site Area: 131,443 SF
 Landscape Area Requirement: 19,716 SF [15% Net Site Area]
 Provided Landscape Area: 46,721 SF [36% Net Site Area]

IRRIGATION:

A REUSE WATER SYSTEM WILL EVENTUALLY SUPPLY THE ANTICIPATED IRRIGATION SYSTEMS. UNTIL THE REUSE SYSTEM IS OPERATIONAL, THE IRRIGATION WILL BE HOOKED UP TO A POTABLE WATER LINE FROM THE CITY. QUICK COUPLING VALVES ARE TO BE LOCATED AT APPROXIMATELY 200 FOOT INTERVALS TO PROVIDE INCIDENTAL WATERING OF TREES, SHRUBS AND TEMPORARY PLANTINGS. GATE VALVES INSTALLED THROUGHOUT WILL ALLOW MAINTENANCE WITH A PARTIAL SYSTEM SHUTDOWN.

MASTER VALVES AND FLOW SENSORS WILL PROVIDE PRESSURE REGULATION AND CONTROL OF UNWANTED FLOW. THE AUTOMATIC IRRIGATION CONTROL SYSTEMS WILL BE CAPABLE OF SEASONAL (DAILY) SCHEDULING ADJUSTMENTS. RAIN SHUT-OFF DEVICES WILL BE PROVIDED.

EACH LANDSCAPE HYDROZONE WILL BE WATERED SEPARATELY TO MATCH ITS SPECIFIC NEEDS. MASS LANDSCAPE SHRUB AND GROUND COVER PLANTING WILL BE IRRIGATED BY DRIFTLINE TUBING PLACED IN A GRID PATTERN. TREES WILL BE PROVIDED WITH DRIFLINE LOOPS, DISPERSED LOW-WATER USE SHRUBS AND GRASSES WILL BE IRRIGATED WITH POINT SOURCE DRIP EMITTERS. POP-UP SPRINKLERS WILL IRRIGATE TURF AND NATIVE GRASSES, DESIGNED TO ALLOW A DISTRIBUTION UNIFORMITY OF 75% OR BETTER.

design architect
antoine predeck architect PC
 300 12th street nw
 albuquerque, nm 87102
 505 843 7390 p
 505 243 6254 f

executive architect
jon anderson architect
 912 roma avenue nw
 albuquerque, nm 87102
 505 764 8306 p
 505 764 2879 f

landscape architect
edaw inc
 1809 blake street
 suite 200
 denver, co 80202
 303 595 4522 p
 303 595 4434 f

civil
urs
 6501 americas parkway ne
 suite 900
 albuquerque, nm 87110
 505 855 7500 p
 505 855 7555 f

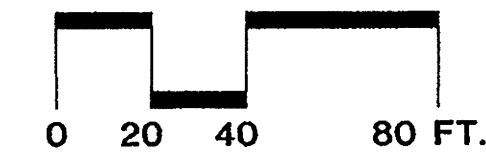
**MESA DEL SOL
 COMMUNITY CENTER
 BUILDING A
 ALBUQUERQUE, NEW MEXICO**

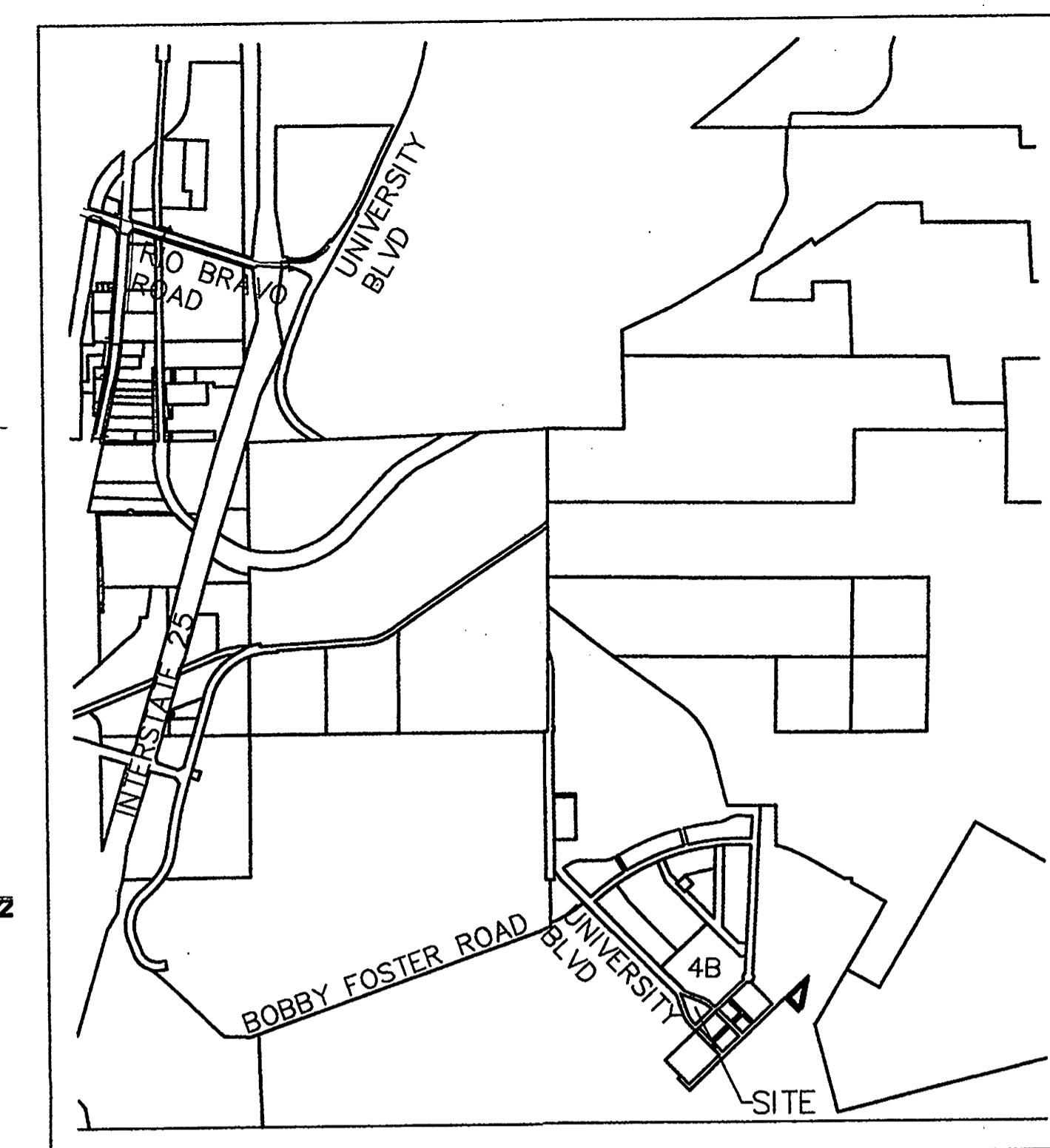
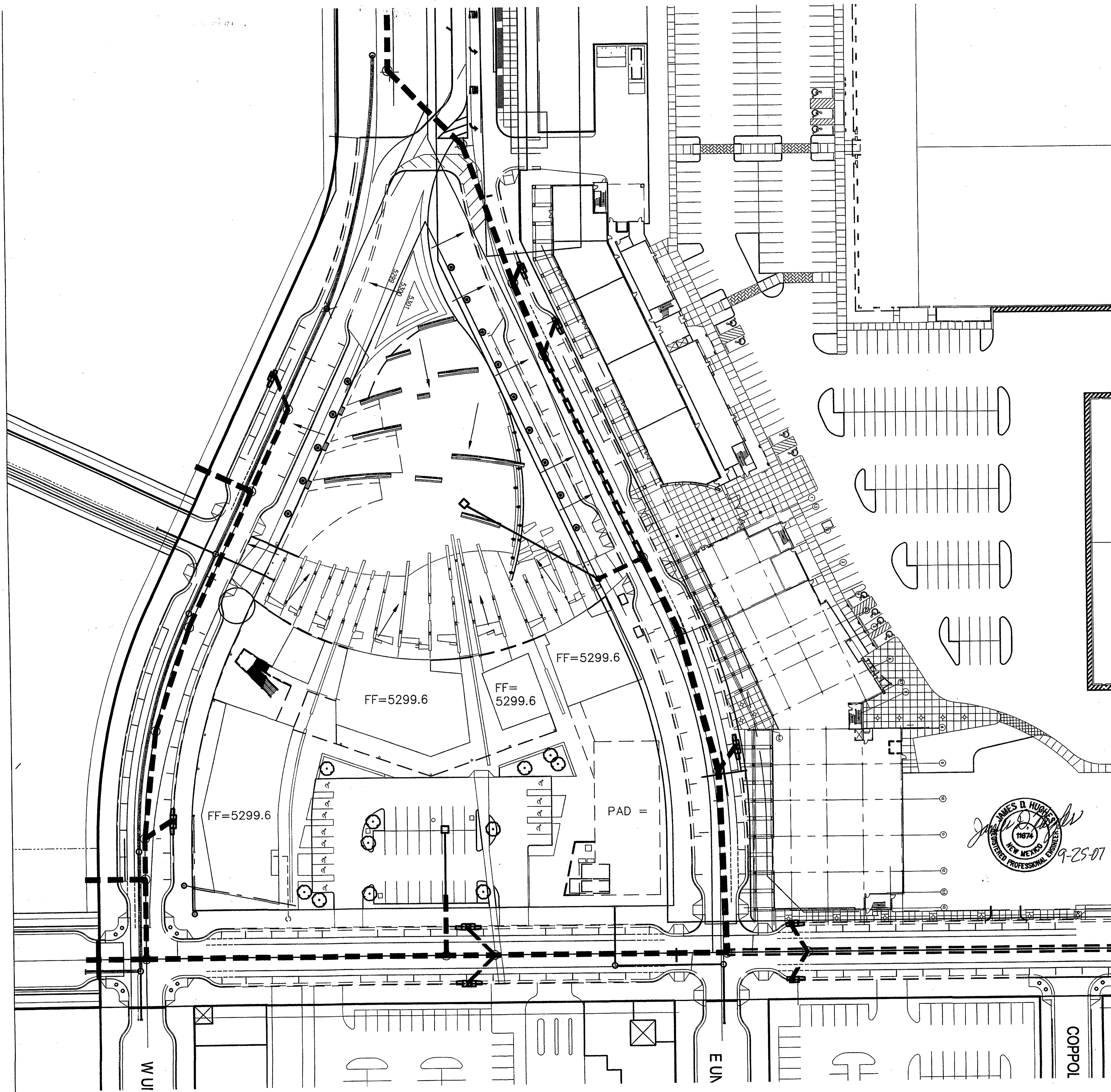
**DRB
 SUBMITTAL**

STATE OF NEW MEXICO
 RUSSELL L. BUTLER
 318
 REGISTERED
 LANDSCAPE ARCHITECT
 27-21-07

DATE: SEPTEMBER 25, 2007

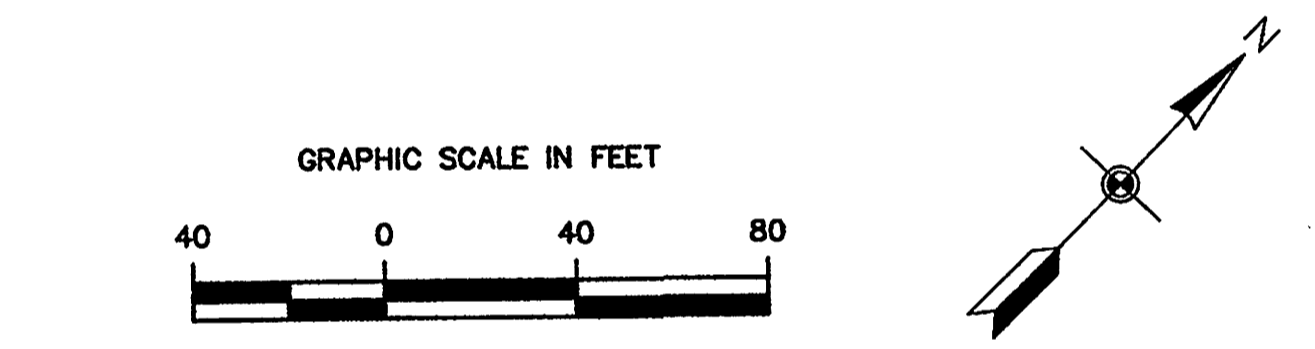
SHEET TITLE:
**LANDSCAPE PLAN
 FOR BUILDING PERMIT**
 SHEET NUMBER:





NORTH
VICINITY MAP 1
1" = 2500'-0"

CITY ZONE ATLAS MAP #R-16
LEGAL DESCRIPTION
TRACK 23 OF THE BULK LAND PLAT FOR MESA del SOL
INNOVATION PARK CONTAINING 3.3268 Ac. AS RECORDED
9/13/07, BOOK 2007C, Pg. 259.



DRAINAGE MANAGEMENT PLAN

THE SUSTAINABILITY GOAL OF WATER QUALITY IS MET BY CAPTURING ALL STORMWATER FROM ONSITE AND ADJACENT PUBLIC STREETS IN AN OFFSITE PRIVATE RETENTION POND (EXISTING) WHICH IS DESIGNED TO INFILTRATE THUS ALSO RECHARGING GROUNDWATER. THE SUSTAINABILITY GOAL OF UTILIZING STORM WATER TO IRRIGATE LANDSCAPING ONSITE WILL BE ACCOMPLISHED BY DIRECTING DRAINAGE FROM ROOFS SIDEWALKS AND PARKING AREAS INTO DEPRESSED PLANTER AREAS AND GRASS SWALES. EXCESS RUNOFF FROM LARGE RAIN EVENTS THAT OVERWHELM THE DRAINAGE CAPACITY OF THE LANDSCAPE AREAS WILL OVERFLOW INTO A SUBSURFACE DRAINAGE SYSTEM WHICH CARRIES THE EXCESS TO THE OFFSITE PRIVATE RETENTION POND WHERE POLUTANTS ARE ALLOWED TO SETTLE AND THE EXCESS STORM WATER IS ENCOURAGED TO INFILTRATE TO REPLENISH GROUND WATER. EXCESS RUNOFF WILL FREE DISCHARGE TO THE STORM SEWER SYSTEM CURRENTLY UNDER CONSTRUCTION WITH CITY PROJECT #775482 "UNIVERSITY BLVD. EXTENSION - PHASE 1B" IN ACCORDANCE WITH THE "MESA DEL SOL (REVISED) PHASE 1B...DRAINAGE ANALYSIS REPORT", DATED 8-15-07. ON SITE SURFACE DRAINAGE WILL BE COLLECTED IN ON SITE STORM PIPES AND CONNECTED TO THE PUBLIC PIPES IN UNIVERSITY BLVD. AND STRYKER RD. AS PLANNED.



MESA DEL SOL
COMMUNITY CENTER
BUILDING A
ALBUQUERQUE, NEW MEXICO

DRB
SUBMITTAL

DATE: SEPTEMBER 25, 2007

SHEET TITLE:
BLOCK E CONCEPTUAL
GRADING AND DRAINAGE PLAN
SHEET NUMBER: 4 of 6

design architect
antoine prodeck architect PC
300 12th street nw
albuquerque, nm 87102
505 843 7390 p
505 243 6254 f

executive architect
jon anderson architect
912 roma avenue nw
albuquerque, nm 87102
505 764 8306 p
505 764 2879 f

landscape architect
edaw inc
1809 blake street
suite 200
denver, co 80202
303 595 4522 p
303 595 4434 f

civil
urs
6501 americas parkway ne
suite 900
albuquerque, nm 87110
505 855 7500 p
505 855 7555 f

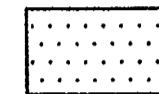
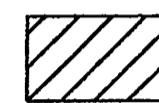
DRAINAGE MANAGEMENT PLAN

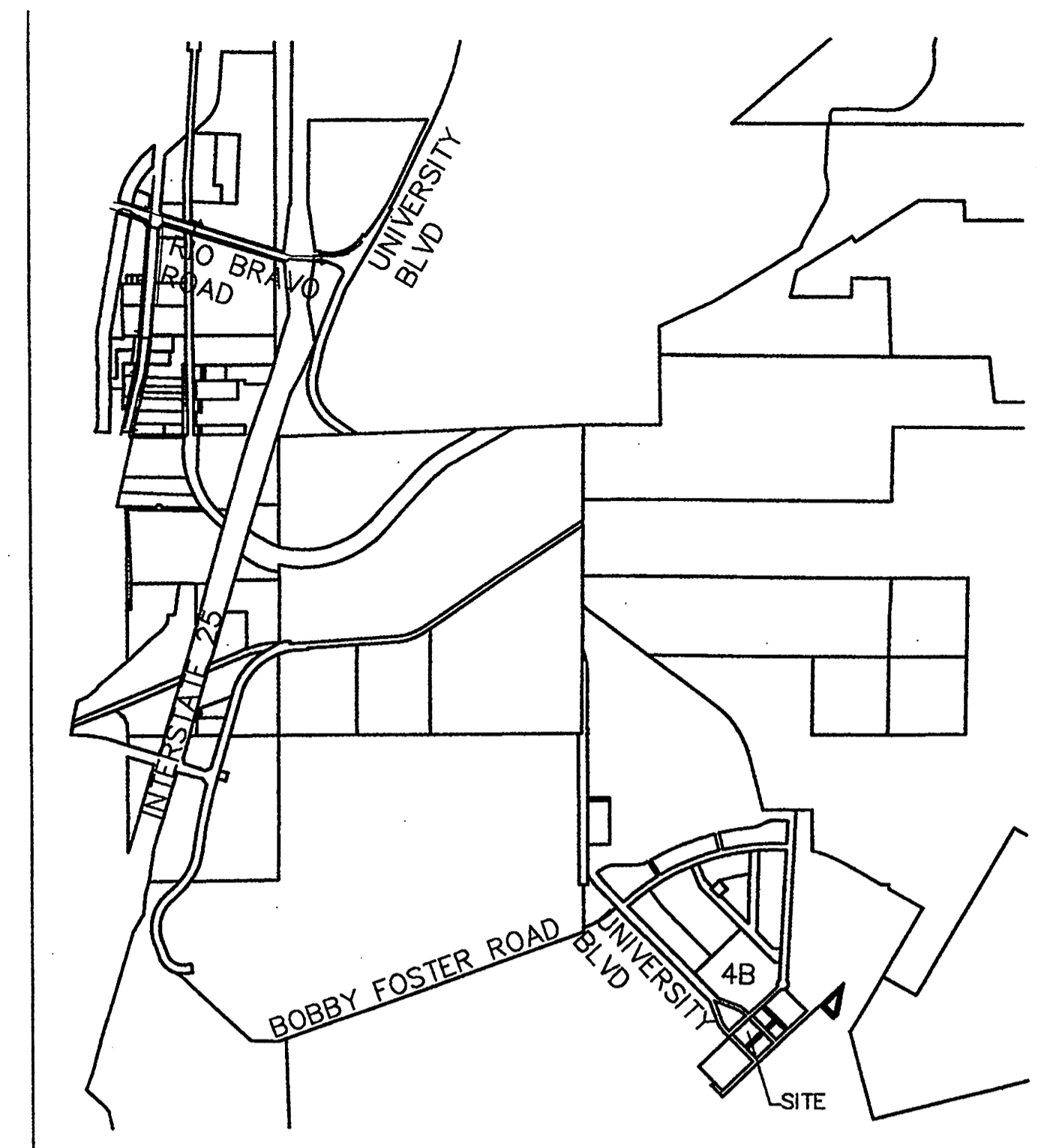
THIS SITE WILL FREE DISCHARGE SURFACE DRAINAGE TO THE ADJACENT STREETS (FUTURE BY SEPARATE PROJECT) TO BE ROUGH GRADED THIS PROJECT WHICH WILL CONVEY STORMWATER RUNOFF TO A PERMANENT OFFSITE PRIVATE RETENTION POND LOCATION, ALSO TO BE ROUGH GRADED THIS PROJECT.

THE FUTURE STREETS AND OFFSITE POND WILL BE CONSTRUCTED WITH THE SUBDIVISION OF TOWN CENTER UNITS 1 & 2 AT MESA DEL SOL. SUSTAINABILITY GOALS WILL BE MET TO THE EXTENT POSSIBLE BY DIRECTING STORMWATER FROM THE IMPERVIOUS SURFACES INTO THE VEGETATED LANDSCAPE AREAS WHICH WILL REMOVE SOME OF THE POLLUTANTS AND CONSERVE WATER. WATERING OF THE LANDSCAPE AREA WILL BE SUPPLEMENTED BY IRRIGATION TO SUSTAIN THE VEGETATION DURING THE DRY SEASONS AND WILL BE EQUIPPED WITH RAIN SENSORS TO SHUT OFF IRRIGATION WHEN RAIN MEETS THE IRRIGATION NEEDS. GROUND WATER RECHARGE AND SUSTAINABILITY GOALS OF WATER QUALITY ARE FURTHER MET BY THE PRIVATE RETENTION POND.

THE PRIVATE RETENTION POND WILL REMOVE THE REMAINING POLLUTANTS FROM WATER NOT PASSED OVER THE BIO-RETENTION LANDSCAPE STRIPS SO THAT NO POLLUTANTS WILL BE CARRIED OFF SITE BY STORMWATER AND THE POND LANDSCAPING WILL BE SUSTAINED LARGELY BY STORMWATER RUNOFF.

LEGEND

-  AREA TO BE ROUGH GRADED
-  PAVING THIS PROJECT

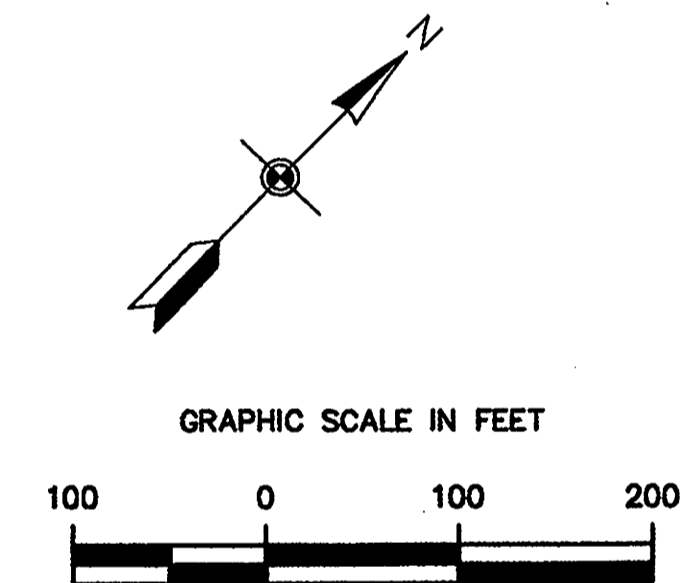


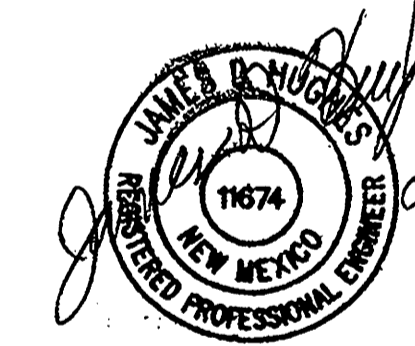
VICINITY MAP 1
1" = 2500'-0"

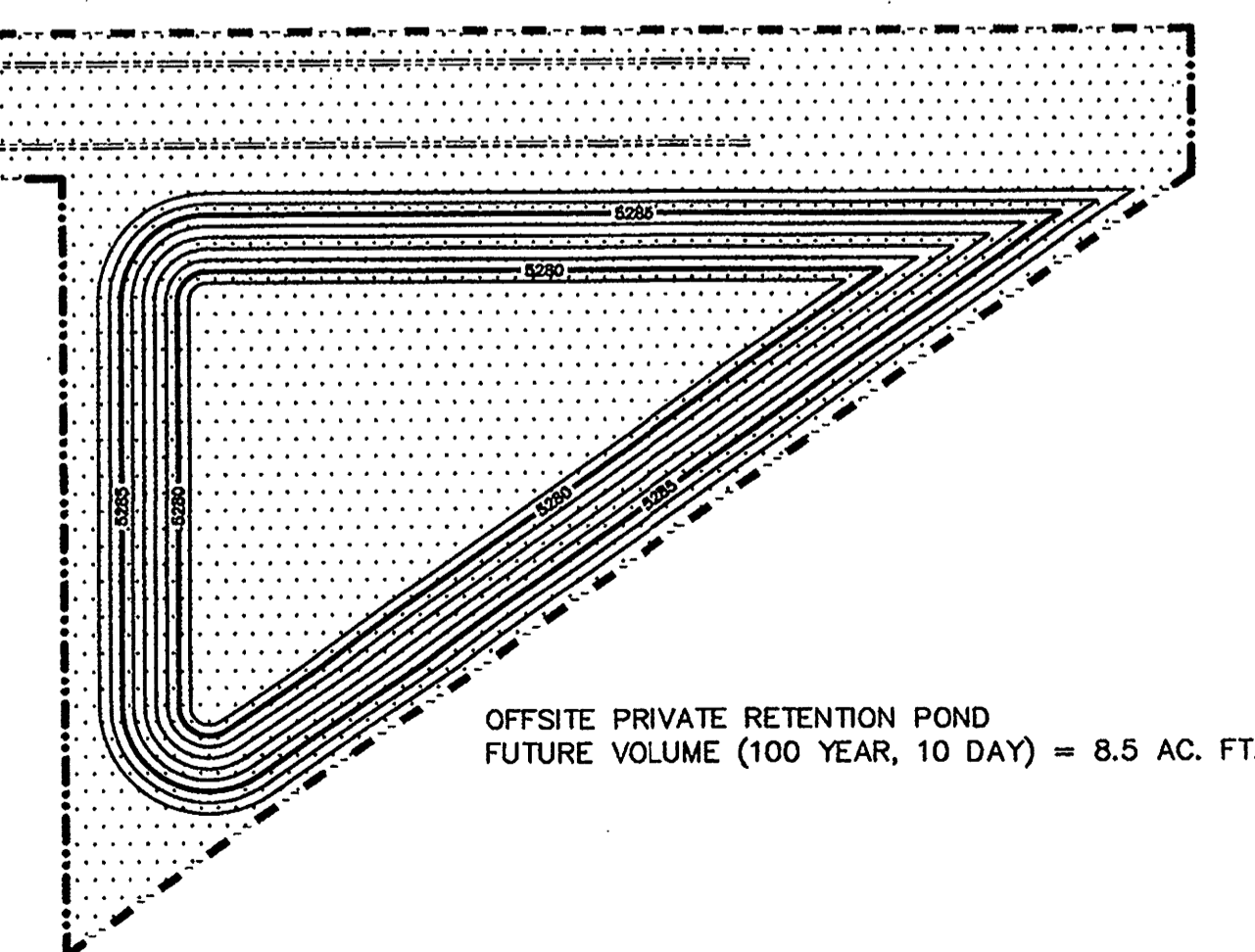
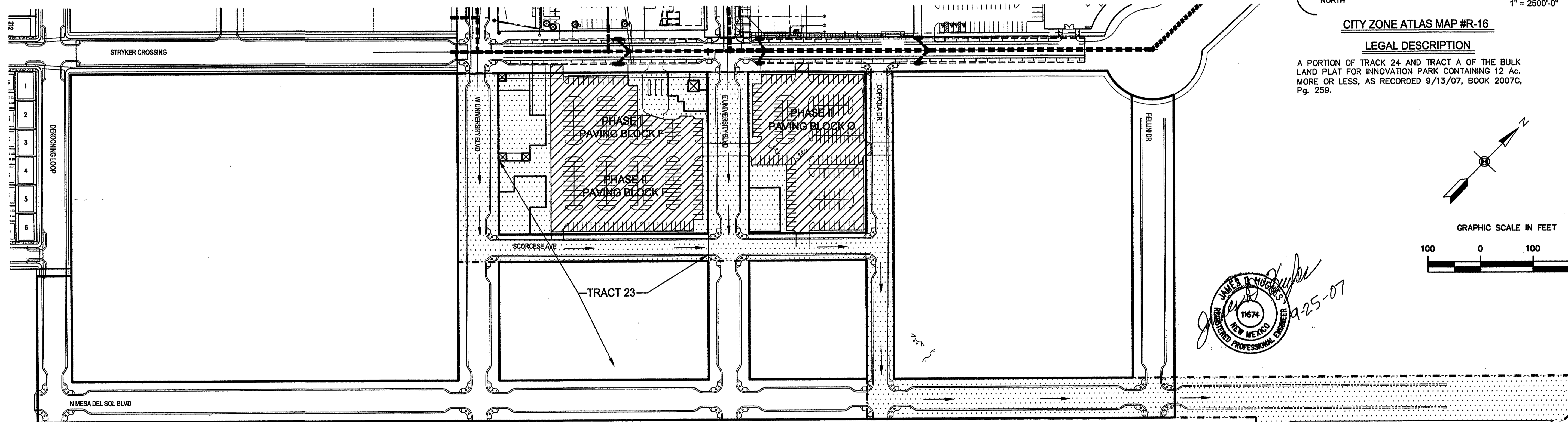
CITY ZONE ATLAS MAP #R-16

LEGAL DESCRIPTION

A PORTION OF TRACK 24 AND TRACT A OF THE BULK LAND PLAT FOR INNOVATION PARK CONTAINING 12 AC. MORE OR LESS, AS RECORDED 9/13/07, BOOK 2007C, Pg. 259.



James R. Hughes

 9-25-07



OFFSITE PRIVATE RETENTION POND
 FUTURE VOLUME (100 YEAR, 10 DAY) = 8.5 AC. FT.

MESA DEL SOL
 COMMUNITY CENTER
 BUILDING A
 ALBUQUERQUE, NEW MEXICO

DRB
 SUBMITTAL

DATE: SEPTEMBER 25, 2007

SHEET TITLE:
 BLOCK F CONCEPTUAL
 GRADING AND DRAINAGE PLAN
 SHEET NUMBER:

design architect
 antoine predock architect PC
 300 12th street nw
 albuquerque, nm 87102
 505 843 7390 p
 505 243 6254 f

executive architect
 jon anderson architect
 912 roma avenue nw
 albuquerque, nm 87102
 505 764 8306 p
 505 764 2879 f

landscape architect
 edaw inc
 1809 blake street
 suite 200
 denver, co 80202
 303 595 4522 p
 303 595 4434 f

civil
 urs
 6501 americas parkway ne
 suite 900
 albuquerque, nm 87110
 505 855 7500 p
 505 855 7555 f

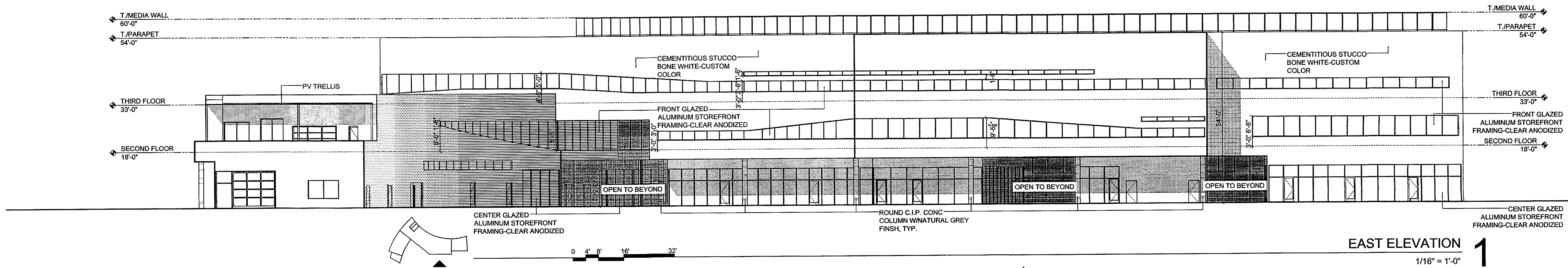
design architect
antoine predock architect PC
 300 12th street nw
 albuquerque, nm 87102
 505 843 7390 p
 505 243 6254 f

executive architect
jon anderson architect
 912 roma avenue nw
 albuquerque, nm 87102
 505 764 8306 p
 505 764 2879 f

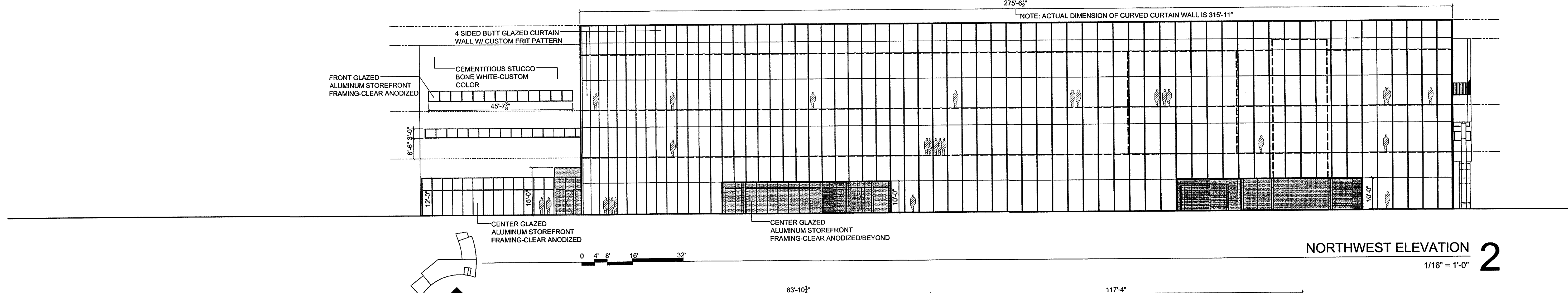
landscape architect
edaw inc
 1809 blake street
 suite 200
 denver, co 80202
 303 595 4522 p
 303 595 4434 f

civil
urs
 6501 americas parkway ne
 suite 900
 albuquerque, nm 87110
 505 855 7500 p
 505 855 7555 f

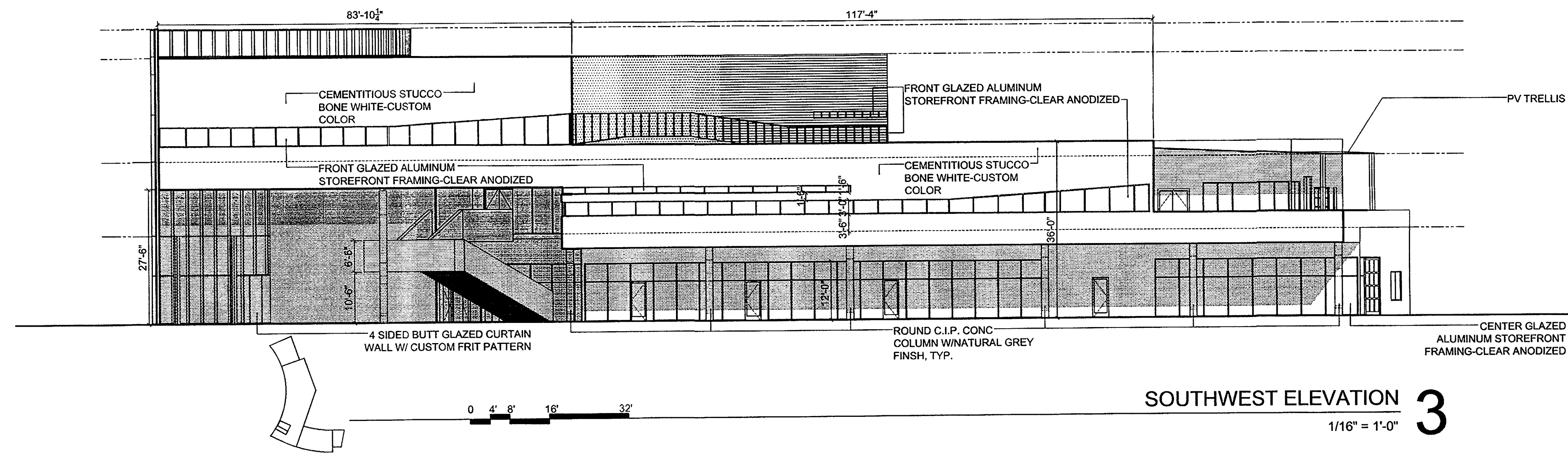
MESA DEL SOL
 COMMUNITY CENTER
 BUILDING A
 ALBUQUERQUE, NEW MEXICO



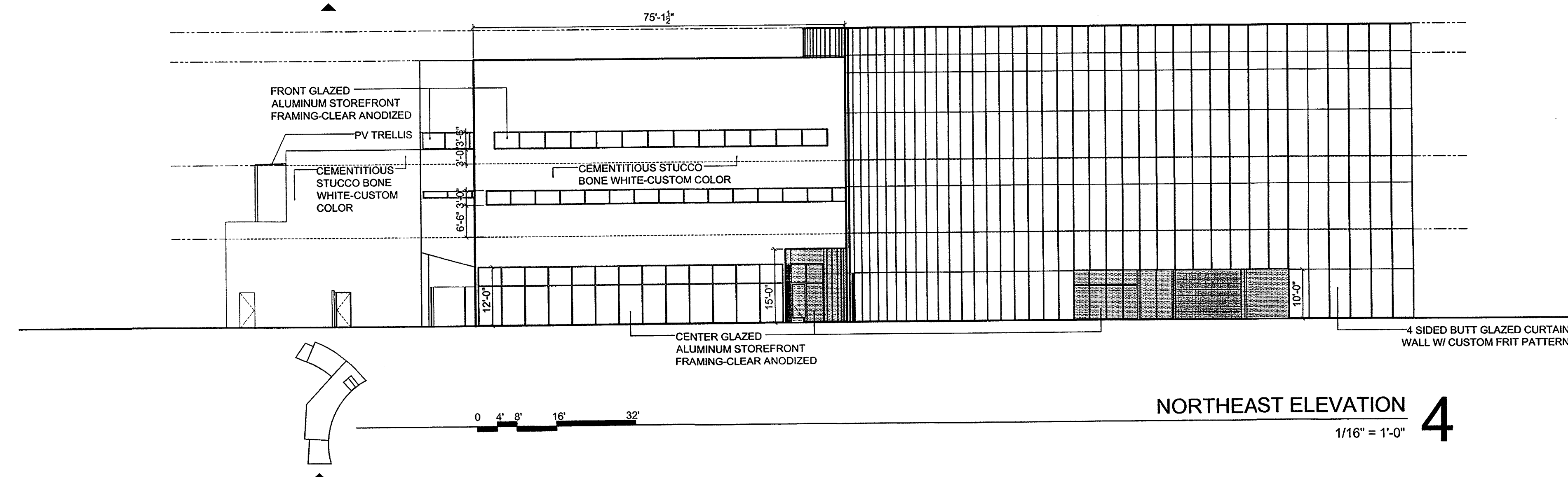
EAST ELEVATION 1
 1/16" = 1'-0"



NORTHWEST ELEVATION 2
 1/16" = 1'-0"

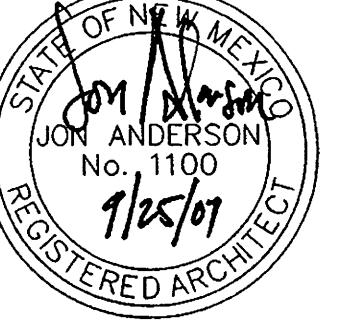


SOUTHWEST ELEVATION 3
 1/16" = 1'-0"



NORTHEAST ELEVATION 4
 1/16" = 1'-0"

**DRB
 SUBMITTAL**

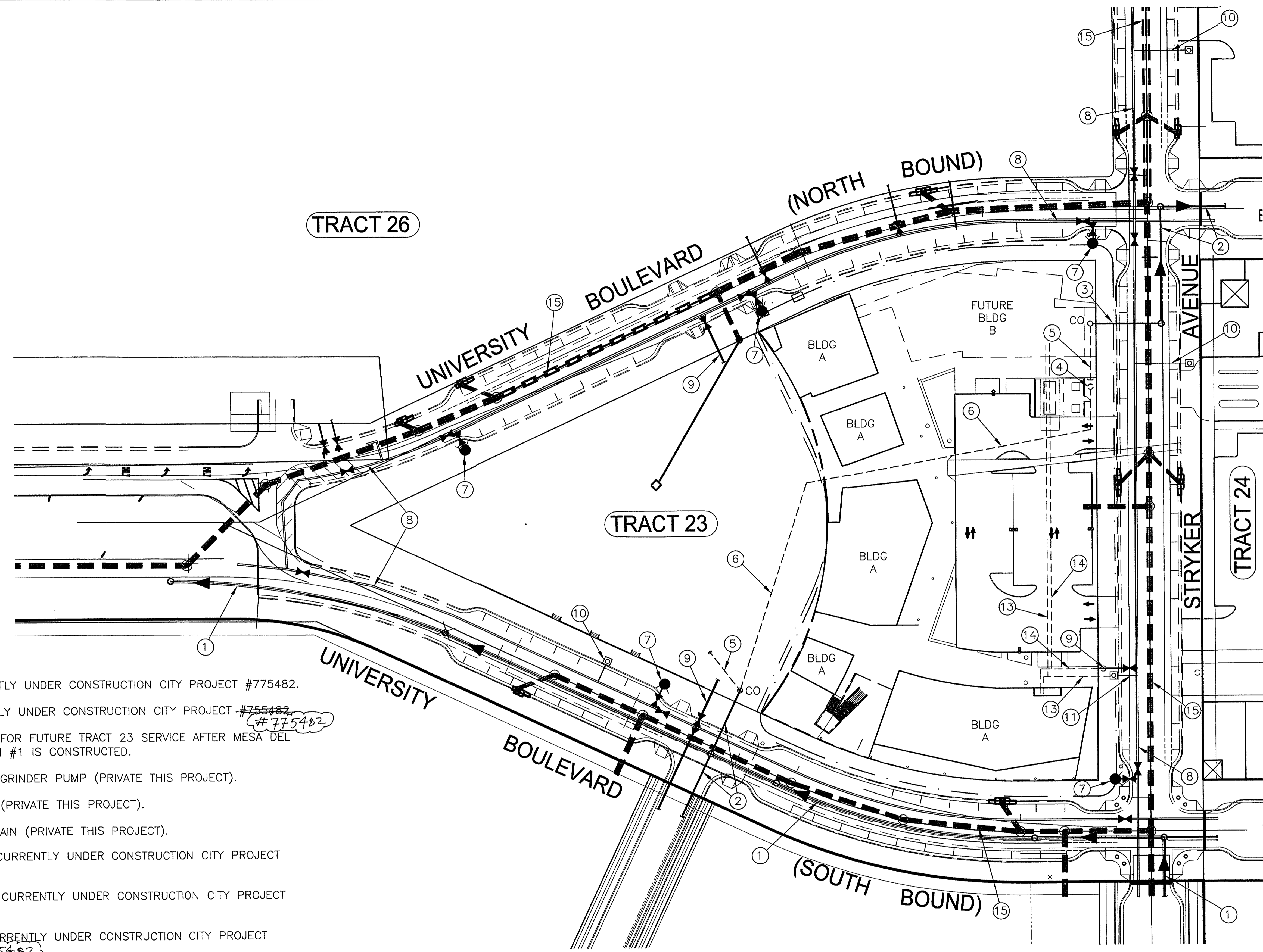


DATE: SEPTEMBER 25, 2007

SHEET TITLE:
 BUILDING ELEVATIONS

SHEET NUMBER:

06



KEYED NOTES

- ① 24" SAS CURRENTLY UNDER CONSTRUCTION CITY PROJECT #775482.
- ② 8" SAS CURRENTLY UNDER CONSTRUCTION CITY PROJECT #755482
#775482
- ③ 6" SAS SERVICE FOR FUTURE TRACT 23 SERVICE AFTER MESA DEL SOL LIFT STATION #1 IS CONSTRUCTED.
- ④ TEMPORARY SAS GRINDER PUMP (PRIVATE THIS PROJECT).
- ⑤ 4" SAS SERVICE (PRIVATE THIS PROJECT).
- ⑥ 2" SAS FORCE MAIN (PRIVATE THIS PROJECT).
- ⑦ FIRE HYDRANTS CURRENTLY UNDER CONSTRUCTION CITY PROJECT #775482.
- ⑧ 12" WATER LINE CURRENTLY UNDER CONSTRUCTION CITY PROJECT #775482.
- ⑨ 6" FIRE LINE CURRENTLY UNDER CONSTRUCTION CITY PROJECT #755482, #775482
- ⑩ 1 1/2" WATER SERVICE CURRENTLY UNDER CONSTRUCTION CITY PROJECT #755482, #775482
- ⑪ 2" WATER SERVICE CURRENTLY UNDER CONSTRUCTION CITY PROJECT #755482, #775482
- ⑫ NOT USED
- ⑬ PRIVATE 2 1/2" WATER LINE THIS PROJECT.
- ⑭ PRIVATE 6" FIRE LINE THIS PROJECT.
- ⑮ STORM SEWER CURRENTLY UNDER CONSTRUCTION CITY PROJECT #755482.

design architect
antoine predock architect PC
 300 12th street nw
 albuquerque, nm 87102
 505 843 7390 p
 505 243 6254 f

executive architect
jon anderson architect
 912 roma avenue nw
 albuquerque, nm 87102
 505 764 8306 p
 505 764 2879 f

landscape architect
edaw inc
 1809 blake street
 suite 200
 denver, co 80202
 303 595 4522 p
 303 595 4434 f

civil
 urs
 6501 americas parkway ne
 suite 900
 albuquerque, nm 87110
 505 855 7500 p
 505 855 7555 f

MESA DEL SOL
COMMUNITY CENTER
BUILDING 1
ALBUQUERQUE, NEW MEXICO

DRB
 SUBMITTAL

DATE: SEPTEMBER 25, 2007

SHEET TITLE:
 UTILITY PLAN

SHEET NUMBER: 7 of 7

