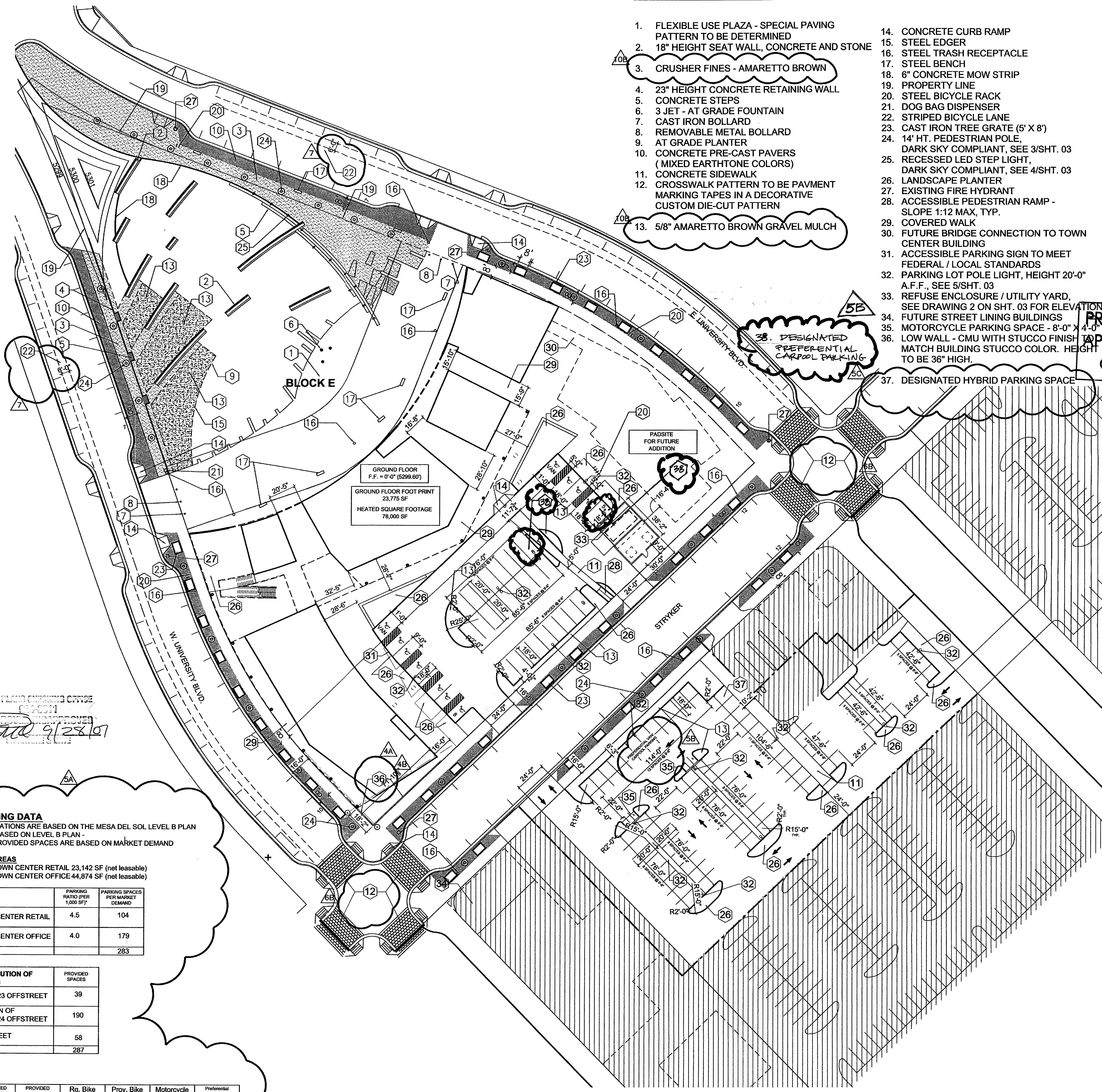


KEYED NOTES:

1. FLEXIBLE USE PLAZA - SPECIAL PAVING PATTERN TO BE DETERMINED
2. 18" HEIGHT SEAT WALL, CONCRETE AND STONE
3. CRUSHER FINES - AMARETTO BROWN
4. 23" HEIGHT CONCRETE RETAINING WALL
5. CONCRETE STEPS
6. 3 JET - AT GRADE FOUNTAIN
7. CAST IRON BOLLARD
8. REMOVABLE METAL BOLLARD
9. AT GRADE PLANTER
10. CONCRETE PRE-CAST PAVERS (MIXED EARTHTONE COLORS)
11. CONCRETE SIDEWALK
12. CROSSWALK PATTERN TO BE PAVMENT MARKING TAPES IN A DECORATIVE CUSTOM DIE-CUT PATTERN
13. 5/8" AMARETTO BROWN GRAVEL MULCH
14. CONCRETE CURB RAMP
15. STEEL EDGER
16. STEEL TRASH RECEPTACLE
17. STEEL BENCH
18. 6" CONCRETE MOW STRIP
19. PROPERTY LINE
20. STEEL BICYCLE RACK
21. DOG BAG DISPENSER
22. STRIPED BICYCLE LANE
23. CAST IRON TREE GRATE (5' X 8')
24. 14' HT. PEDESTRIAN POLE, DARK SKY COMPLIANT, SEE 3/SHT. 03
25. RECESSED LED STEP LIGHT, DARK SKY COMPLIANT, SEE 4/SHT. 03
26. LANDSCAPE PLANTER
27. EXISTING FIRE HYDRANT
28. ACCESSIBLE PEDESTRIAN RAMP - SLOPE 1:12 MAX, TYP.
29. COVERED WALK
30. FUTURE BRIDGE CONNECTION TO TOWN CENTER BUILDING
31. ACCESSIBLE PARKING SIGN TO MEET FEDERAL / LOCAL STANDARDS
32. PARKING LOT POLE LIGHT, HEIGHT 20'-0" A.F.F., SEE 5/SHT. 03
33. REFUSE ENCLOSURE / UTILITY YARD, SEE DRAWING 2 ON SHT. 03 FOR ELEVATION
34. FUTURE STREET LINING BUILDINGS
35. MOTORCYCLE PARKING SPACE - 8'-0" X 4'-0"
36. LOW WALL - CMU WITH STUCCO FINISH - MATCH BUILDING STUCCO COLOR. HEIGHT TO BE 36" HIGH.
37. DESIGNATED HYBRID PARKING SPACE
38. DESIGNATED PREFERENTIAL CARPOOL PARKING



PROJECT NUMBER: _____

Application Number: _____

This plan is consistent with the specific Site Development Plan approved by the Environmental Planning Commission (EPC), dated 8/24/07 and the Findings and Conditions in the Official Notification of Decision are satisfied.

Is an Infrastructure List required? Yes () No If yes, then a set of approved DRB plans with a work order is required for any construction within Public Right-of-Way or for construction of public improvements.

DRB SITE DEVELOPMENT PLAN SIGNOFF APPROVAL:

_____	Date _____
Traffic Engineering Transportation Division	
_____	Date _____
Water Utility Department	
_____	Date _____
Parks and Recreation Department	
_____	Date _____
City Engineer	
<u>Michael Holtz (3rd Compaction)</u>	<u>9/28/07</u>
Solid Waste Management	Date
_____	Date _____
DRB Chairperson, Planning Department	

PARKING DATA
CALCULATIONS ARE BASED ON THE MESA DEL SOL LEVEL B PLAN
*BASED ON LEVEL B PLAN - PROVIDED SPACES ARE BASED ON MARKET DEMAND

AREAS
TOWN CENTER RETAIL 23,142 SF (net leasable)
TOWN CENTER OFFICE 44,874 SF (net leasable)

	PARKING RATIO (PER 1,000-SF)	PARKING SPACES PER MARKET DEMAND
TOWN CENTER RETAIL	4.5	104
TOWN CENTER OFFICE	4.0	179
TOTAL		283

DISTRIBUTION OF SPACES	PROVIDED SPACES
TRACT 23 OFFSTREET	39
PORTION OF TRACT 24 OFFSTREET	190
ON STREET	58
TOTAL	287

REQUIRED ACCESSIBLE SPACES	PROVIDED ACCESSIBLE SPACES	Rq. Bike Spaces	Prov. Bike Spaces	Motorcycle spaces	Preferential Car/Van Pool Spaces
8	12	14	20	6	12

design architect
antoine predock architect PC
300 12th street nw
albuquerque, nm 87102
505 843 7390 p
505 243 6254 f

executive architect
jon anderson architect
912 roma avenue nw
albuquerque, nm 87102
505 764 8306 p
505 764 2879 f

landscape architect
edaw inc
1809 blake street
suite 200
denver, co 80202
303 595 4522 p
303 595 4434 f

civil
urs
6501 americas parkway ne
suite 900
albuquerque, nm 87110
505 855 7500 p
505 855 7555 f

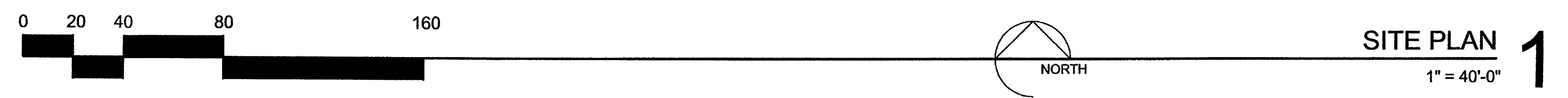
Revised
SPBP
PRELIMINARY PLAN
APPROVED BY DRB
ON _____

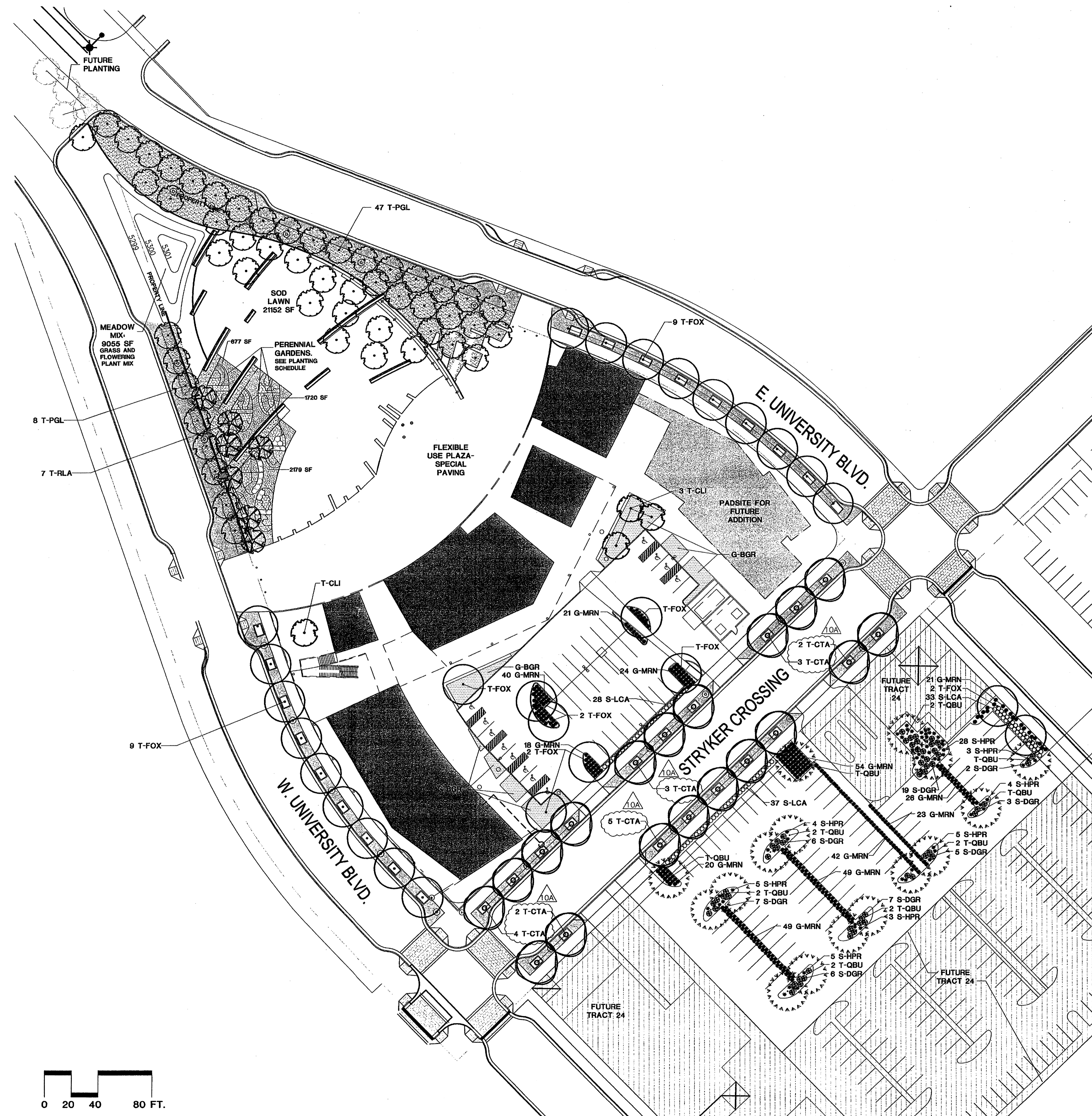
MESA DEL SOL
COMMUNITY CENTER
BUILDING A
ALBUQUERQUE, NEW MEXICO

DRB SUBMITTAL

DATE: SEPTEMBER 25, 2007

SHEET TITLE:
SITE DEVELOPMENT PLAN
FOR BUILDING PERMIT
SHEET NUMBER:





PLANT SCHEDULE

DECIDUOUS TREES							
Abbr.	No.	Genus	Species	Common Name	Min. Size	Min. Spacing	Notes
T-CL	4	Chilopsis	linearis	Desert Willow	24" box	as shown	*
T-CTA	19	Chitipa	tashkentensis	Chitipa	2.5' cal.	as shown	* replace with R. pseudoacacia
T-FOX	27	Fraxinus	oxycarpa	Rowwood Ash	2.5' cal.	as shown	
T-PGL	55	Prosopis	glandulosa	Honey Mesquite	2.5' cal.	as shown	
T-QBU	16	Quercus	buckleyi	Texas Red Oak	2.5' cal.	as shown	
T-RLA	7	Rhus	lanceolata	Prairie Flameleaf Sumac	24" box	as shown	
T-RPS	-	Robinia	pseudoacacia	Black Locust	2.5' cal.	as shown	

DECIDUOUS SHRUBS							
Abbr.	No.	Genus	Species	Common Name	Min. Size	Min. Spacing	Notes
S-ATH	8	Anisacanthus	thurberi	Chuparosa	5 GAL.	as shown	
S-DFO	11	Dalea	formosa	Feather Dalea	5 GAL.	as shown	
S-DGR	55	Dalea	greggii	Trailing Indigo Bush	5 GAL.	as shown	
S-GSA	19	Gutierrezia	sorothroae	Sierra Negra	5 GAL.	as shown	
S-HPR	61	Hesperaloe	parviflora	Red Yucca	5 GAL.	as shown	
S-KLA	24	Krascheninnikovia	lanata	Winterfat	5 GAL.	as shown	
S-LCA	98	Leucophyllum	candidum	Thunder Cloud Silverleaf Ranger	5 GAL.	as shown	

PERENNIALS							
Abbr.	No.	Genus	Species	Common Name	Min. Size	Min. Spacing	Notes
P-AFR	18	Abronia	fragrans	Sand Verbena	1 GAL.	as shown	*
P-ACO	43	Aconitum	columbianum	Monkshood	1 GAL.	as shown	*
P-ACE	25	Allium	cernuum	Nodding Onion	1 GAL.	as shown	*
P-AAL	32	Aquilegia	alpina	Alpine Columbine	1 GAL.	as shown	*
P-AOO	36	Aster	oolongensis	Sky-blue Aster	1 GAL.	as shown	*
P-BMU	17	Baileya	multiradiata	Desert Marigold	1 GAL.	18" O.C.	* meadow mix
P-CSC	21	Cassia	scilloides	Wild Hyacinth	1 GAL.	as shown	*
P-CIN	25	Castilleja	integra	Indian Paintbrush	1 GAL.	as shown	*
P-CMO	30	Centaurea	montana	Corn Flower	1 GAL.	as shown	*
P-DFL	38	Delosperma	floribundum	Starburst Iceplant	1 GAL.	as shown	*
P-EPU	32	Echinocoea	purpurea	Purple Coneflower	1 GAL.	18" O.C.	*
P-EDI	40	Eriogonum	divergens	Fleabane Daisy	1 GAL.	as shown	*
P-GPU	37	Gaillardia	pulchella	Blanket Flower	1 GAL.	as shown	meadow mix
P-GAL	20	Gentiana	algida	Gentian	1 GAL.	as shown	*
P-HPE	24	Helianthus	petiolaris	Plains Sunflower	1 GAL.	as shown	*
P-HDE	16	Hibiscus	denudatus	Desert Rose-mallow	1 GAL.	as shown	*
P-KCO	16	Kniphofia	'Corallina'	Torch Lily	1 GAL.	as shown	*
P-LPU	25	Liatris	punctata	Goyfeather	1 GAL.	as shown	*
P-MJ	12	Mentzelia	viridifolia	Blazing Star	1 GAL.	as shown	meadow mix
P-MCA	30	Mimulus	cardinalis	Crimson Monkeyflower	1 GAL.	as shown	*
P-MM	42	Mirabilis	multiflora	4 o'clock	1 GAL.	as shown	*
P-MME	20	Monarda	menthaefolia	Bea Balm	1 GAL.	as shown	*
P-NXF	26	Nepeta	x faassanii	Catmint	1 GAL.	as shown	*
P-PSF	15	Penstemon	barbatulus	Scarley Bugler Penstemon	1 GAL.	18" O.C.	meadow mix
P-PST	15	Penstemon	strictus	Penstemon	1 GAL.	as shown	meadow mix
P-PPU	15	Petalostemum	purpureum	Purple Prairie Clover	1 GAL.	as shown	*
P-RCD	16	Ratibida	columifera	Prairie Coneflower	1 GAL.	as shown	meadow mix
P-ROF	18	Rosmarinus	officialis	Rosemary	1 GAL.	as shown	*
P-SDO	16	Salvia	dorrii	Desert Sage	1 GAL.	as shown	*
P-SPI	23	Stanleya	pinnata	Prince's Plume	1 GAL.	as shown	*
P-VSP	28	Veronica	spicata 'Red Fox'	Red Fox Speedwell	1 GAL.	as shown	*
P-WSC	12	Wythia	scabra	Desert Mule's Ear	1 GAL.	as shown	*

ORNAMENTAL GRASSES							
Abbr.	No.	Genus	Species	Common Name	Min. Size	Min. Spacing	Notes
G-AMG	91	Achillea	montana	Mountain Kidney Vetch	1 GAL.	as shown	*
G-ASM	65	Anagyron	smithii	Western Wheatgrass	1 GAL.	as shown	*
G-BER	86	Bouteloua	eriopoda	Black Grama	1 GAL.	as shown	meadow mix
G-BGR	49	Bouteloua	gracilis	Blue Grama	1 GAL.	as shown	meadow mix
G-BM	89	Briza	minor	Big Quaking Grass	1 GAL.	as shown	*
G-CM	23	Carex	microptera	Smallwing Sedge	1 GAL.	as shown	*
G-HJA	58	Hilaria	jamesii	Galleta	1 GAL.	as shown	*
G-MEM	84	Muhlenbergia	emmerleyi 'El Toro'	Bull Grass	1 GAL.	as shown	*
G-MRN	388	Muhlenbergia	rigida 'Nashville'	Purple Muhly	1 GAL.	as shown	*
G-PV	102	Panicum	virgatum	Switchgrass	1 GAL.	as shown	*
G-SSC	-	Schizachrium	scoparium	Little Bluestem	1 GAL.	as shown	*

GROUND COVER - SOD							
Abbr.	No.	Genus	Species	Common Name	Min. Size	Min. Spacing	Notes
PPR	-	Poa	protensis	Kentucky Bluegrass	-	-	sod lawn

NOTES:

- QUANTITIES IN THE SCHEDULE ARE FOR REFERENCE ONLY. CONTRACTOR SHALL VERIFY ALL QUANTITIES ON PLANS.
- MEADOW SEED MIX = 50% SOUTHWEST NATIVE GRASS MIXTURE (4 LBS./ACRE), 50% SOUTHWEST NATIVE WILDFLOWER MIXTURE (8 LBS./ACRE), BOTH AS SUPPLIED BY APPELWOOD SEED CO.
- AN AUTOMATIC IRRIGATION SYSTEM SHALL BE PROVIDED.
- LANDSCAPE MAINTENANCE SHALL BE PROVIDED BY PARCEL OWNER.
- THIS LANDSCAPE PLAN COMPLIES WITH THE WATER CONSERVATION ORDINANCE AND ARTICLE 6-1-1-1.
- THERE ARE NO EXISTING TREES OR SHRUBS ON THE SITE. ALL PLANTS SHOWN ARE PROPOSED.
- PLANTS NOTED WITH "*" ARE SENSITIVE TO SALT AND ARE SUBJECT TO CHANGE IF FUTURE NON-POTABLE WATER IS HIGH IN SALTS.

LANDSCAPE CALCULATIONS:

Tract 23: PARK & BUILDING A
 Site Area: 92,767 SF
 Landscape Area Requirement: 13,915 SF [15% Net Site Area]
 Provided Landscape Area: 43,341 SF [47% Net Site Area]
 Turf Area: 21,152 SF, [23% Net Site Area]

Portion of Tract 24: PARKING LOT
 Site Area: 38,676 SF
 Landscape Area Requirement: 5,801 SF [15% Net Site Area]
 Provided Landscape Area: 5,884 SF [15% Net Site Area]

Total Site Area: 131,443 SF
 Landscape Area Requirement: 19,716 SF [15% Net Site Area]
 Provided Landscape Area: 46,721 SF [36% Net Site Area]

IRRIGATION:

A REUSE WATER SYSTEM WILL EVENTUALLY SUPPLY THE ANTICIPATED IRRIGATION SYSTEMS. UNTIL THE REUSE SYSTEM IS OPERATIONAL, THE IRRIGATION WILL BE HOOKED UP TO A POTABLE WATER LINE FROM THE CITY. QUICK COUPLING VALVES ARE TO BE LOCATED AT APPROXIMATELY 200 FOOT INTERVALS TO PROVIDE INCIDENTAL WATERING OF TREES, SHRUBS AND TEMPORARY PLANTINGS. GATE VALVES INSTALLED THROUGHOUT WILL ALLOW MAINTENANCE WITH A PARTIAL SYSTEM SHUTDOWN.

MASTER VALVES AND FLOW SENSORS WILL PROVIDE PRESSURE REGULATION AND CONTROL OF UNWANTED FLOW. THE AUTOMATIC IRRIGATION CONTROL SYSTEMS WILL BE CAPABLE OF SEASONAL (DAILY) SCHEDULING ADJUSTMENTS. RAIN SHUT-OFF DEVICES WILL BE PROVIDED.

EACH LANDSCAPE HYDROZONE WILL BE WATERED SEPARATELY TO MATCH ITS SPECIFIC NEEDS. MASS LANDSCAPE SHRUB AND GROUND COVER PLANTING WILL BE IRRIGATED BY DRIPLINE TUBING PLACED IN A GRID PATTERN. TREES WILL BE PROVIDED WITH DRIPLINE LOOPS. DISPERSED LOW-WATER USE SHRUBS AND GRASSES WILL BE IRRIGATED WITH POINT SOURCE DRIP EMITTERS. POP-UP SPRINKLERS WILL IRRIGATE TURF AND NATIVE GRASSES, DESIGNED TO ALLOW A DISTRIBUTION UNIFORMITY OF 75% OR BETTER.

design architect
antoino predock architect PC
 300 12th street nw
 albuquerque, nm 87102
 505 843 7390 p
 505 243 6254 f

executive architect
jon anderson architect
 912 roma avenue nw
 albuquerque, nm 87102
 505 764 8306 p
 505 764 2879 f

landscape architect
edaw inc
 1809 blake street
 suite 200
 denver, co 80202
 303 595 4522 p
 303 595 4434 f

civil
urs
 6501 americas parkway ne
 suite 900
 albuquerque, nm 87110
 505 855 7500 p
 505 855 7555 f

**MESA DEL SOL
 COMMUNITY CENTER
 BUILDING A
 ALBUQUERQUE, NEW MEXICO**

**DRB
 SUBMITTAL**



DATE: SEPTEMBER 25, 2007

SHEET TITLE:
**LANDSCAPE PLAN
 FOR BUILDING PERMIT
 SHEET NUMBER:**

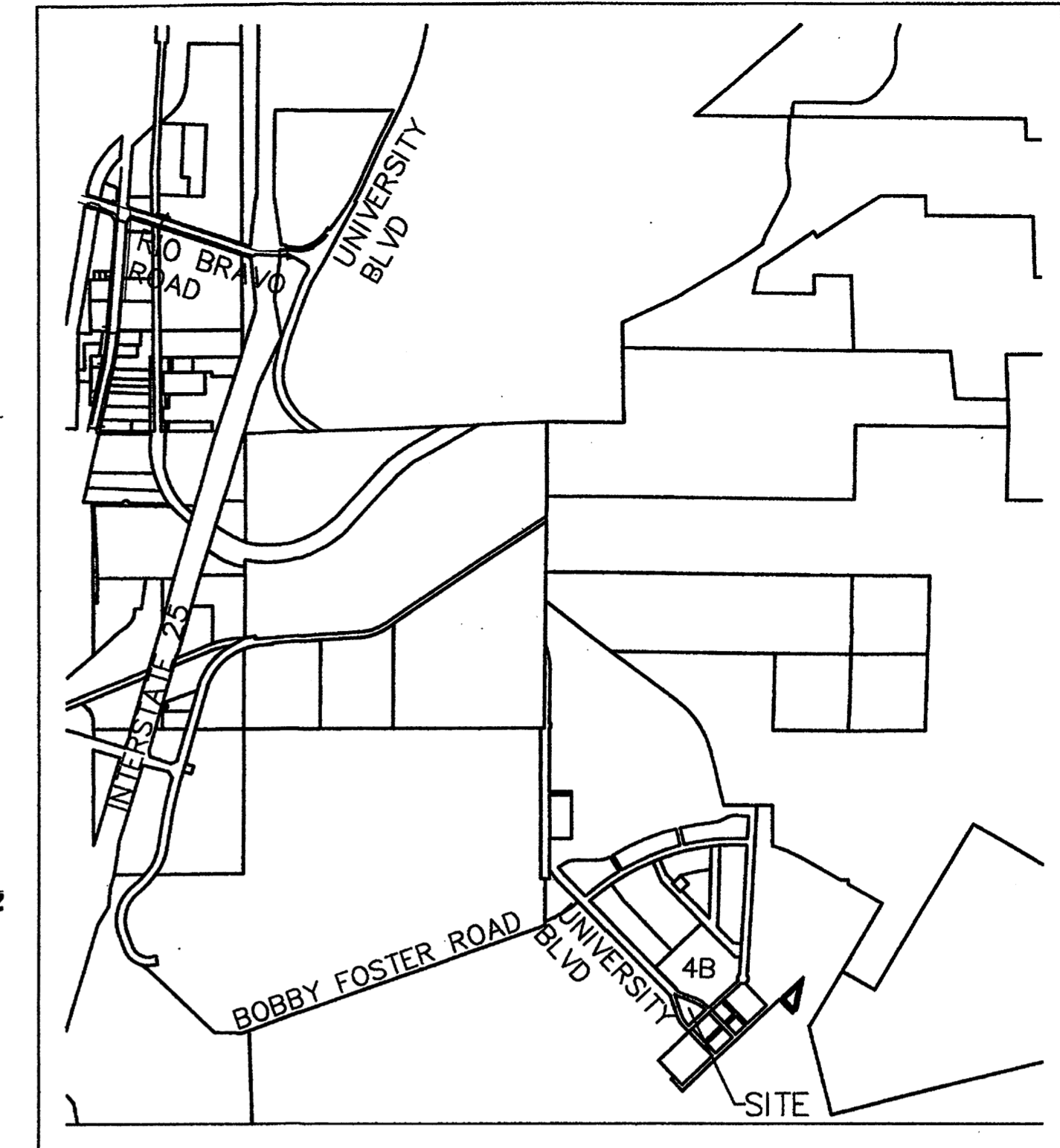
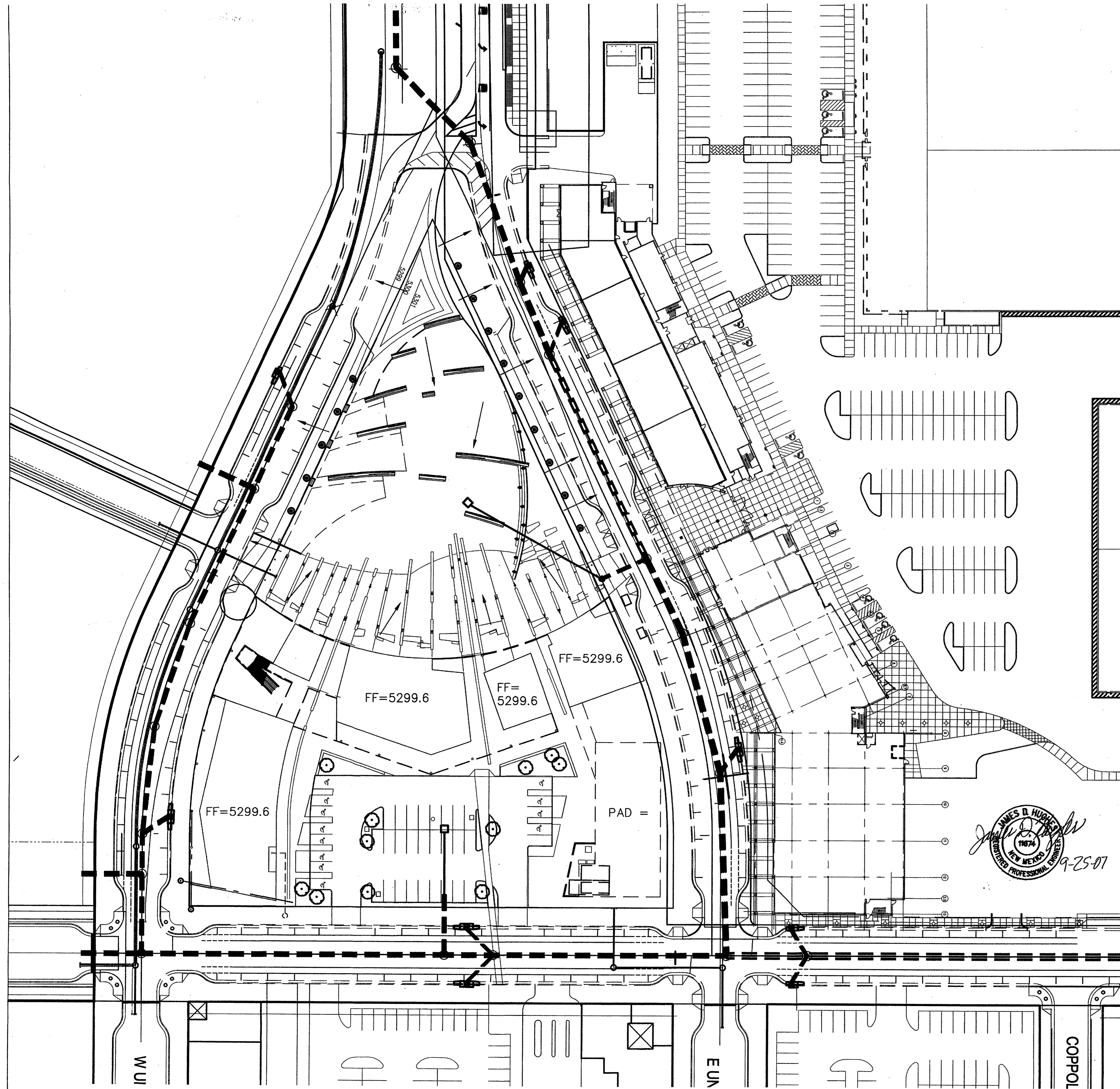
02

LANDSCAPE PLAN

1

1" = 40'-0"

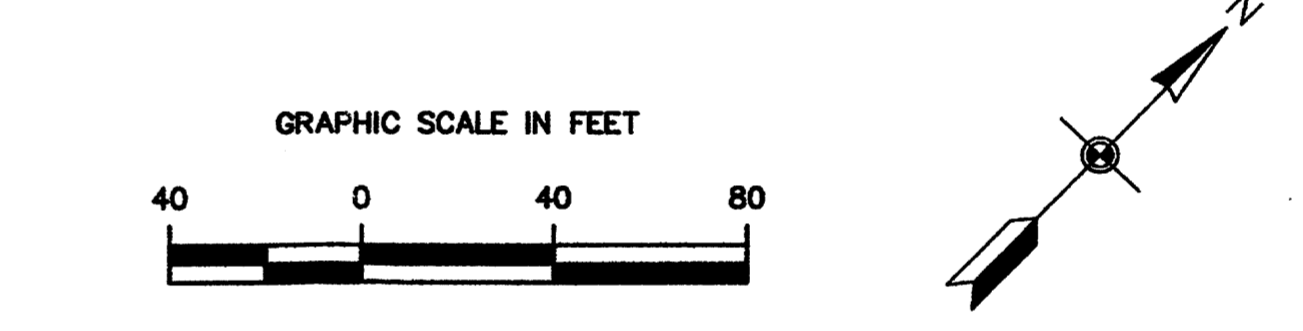




VICINITY MAP 1
1" = 2500'-0"

CITY ZONE ATLAS MAP #R-16
LEGAL DESCRIPTION

TRACK 23 OF THE BULK LAND PLAT FOR MESA del SOL
INNOVATION PARK CONTAINING 3.3268 Ac. AS RECORDED
9/13/07, BOOK 2007C, Pg. 259.



DRAINAGE MANAGEMENT PLAN

THE SUSTAINABILITY GOAL OF WATER QUALITY IS MET BY CAPTURING ALL STORMWATER FROM ONSITE AND ADJACENT PUBLIC STREETS IN AN OFFSITE PRIVATE RETENTION POND (EXISTING) WHICH IS DESIGNED TO INFILTRATE THUS ALSO RECHARGING GROUNDWATER. THE SUSTAINABILITY GOAL OF UTILIZING STORM WATER TO IRRIGATE LANDSCAPING ONSITE WILL BE ACCOMPLISHED BY DIRECTING DRAINAGE FROM ROOFS SIDEWALKS AND PARKING AREAS INTO DEPRESSED PLANTER AREAS AND GRASS SWALES. EXCESS RUNOFF FROM LARGE RAIN EVENTS THAT OVERWHELM THE DRAINAGE CAPACITY OF THE LANDSCAPE AREAS WILL OVERFLOW INTO A SUBSURFACE DRAINAGE SYSTEM WHICH CARRIES THE EXCESS TO THE OFFSITE PRIVATE RETENTION POND WHERE POLUTANTS ARE ALLOWED TO SETTLE AND THE EXCESS STORM WATER IS ENCOURAGED TO INFILTRATE TO REPLENISH GROUND WATER. EXCESS RUNOFF WILL FREE DISCHARGE TO THE STORM SEWER SYSTEM CURRENTLY UNDER CONSTRUCTION WITH CITY PROJECT #775482 "UNIVERSITY BLVD. EXTENSION - PHASE 1B" IN ACCORDANCE WITH THE "MESA DEL SOL (REVISED) PHASE 1B...DRAINAGE ANALYSIS REPORT", DATED 8-15-07. ON SITE SURFACE DRAINAGE WILL BE COLLECTED IN ON SITE STORM PIPES AND CONNECTED TO THE PUBLIC PIPES IN UNIVERSITY BLVD. AND STRYKER RD. AS PLANNED.

James B. Huggins

 9-25-07

design architect
 antoine predock architect PC
 300 12th street nw
 albuquerque, nm 87102
 505 843 7390 p
 505 243 6254 f

executive architect
 jon anderson architect
 912 roma avenue nw
 albuquerque, nm 87102
 505 764 8306 p
 505 764 2879 f

landscape architect
 edaw inc
 1809 blake street
 suite 200
 denver, co 80202
 303 595 4522 p
 303 595 4434 f

civil
 urs
 6501 americas parkway ne
 suite 900
 albuquerque, nm 87110
 505 855 7500 p
 505 855 7555 f

MESA DEL SOL
 COMMUNITY CENTER
 BUILDING A
 ALBUQUERQUE, NEW MEXICO

DRB
 SUBMITTAL

DATE: SEPTEMBER 25, 2007

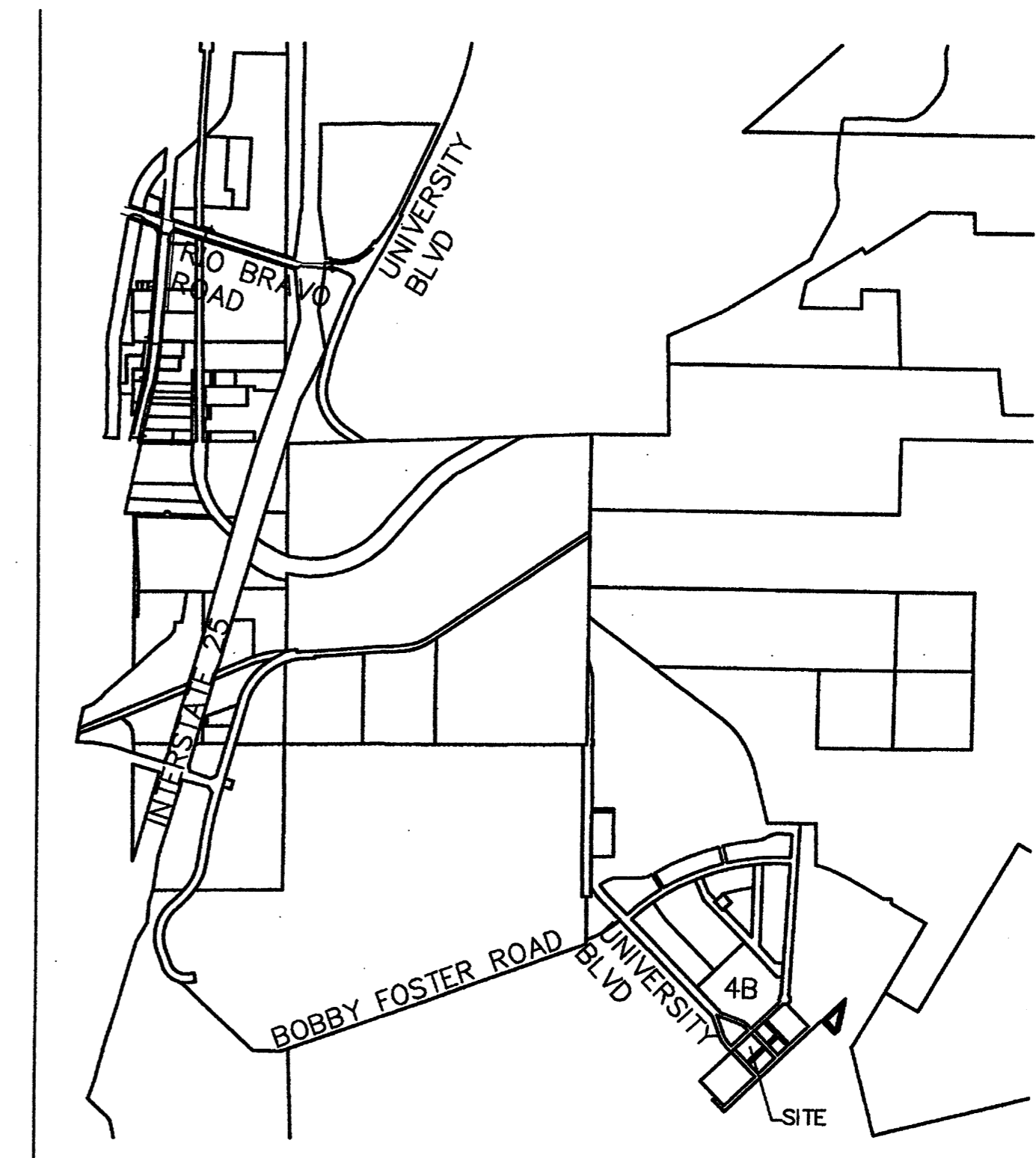
SHEET TITLE:
 BLOCK E CONCEPTUAL
 GRADING AND DRAINAGE PLAN
 SHEET NUMBER: 4 of 6

DRAINAGE MANAGEMENT PLAN

THIS SITE WILL FREE DISCHARGE SURFACE DRAINAGE TO THE ADJACENT STREETS (FUTURE BY SEPARATE PROJECT) TO BE ROUGH GRADED THIS PROJECT WHICH WILL CONVEY STORMWATER RUNOFF TO A PERMANENT OFFSITE PRIVATE RETENTION POND LOCATION, ALSO TO BE ROUGH GRADED THIS PROJECT.

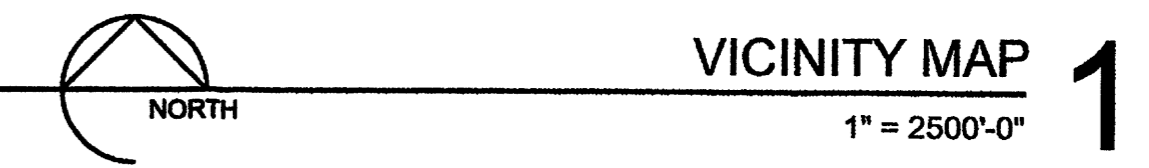
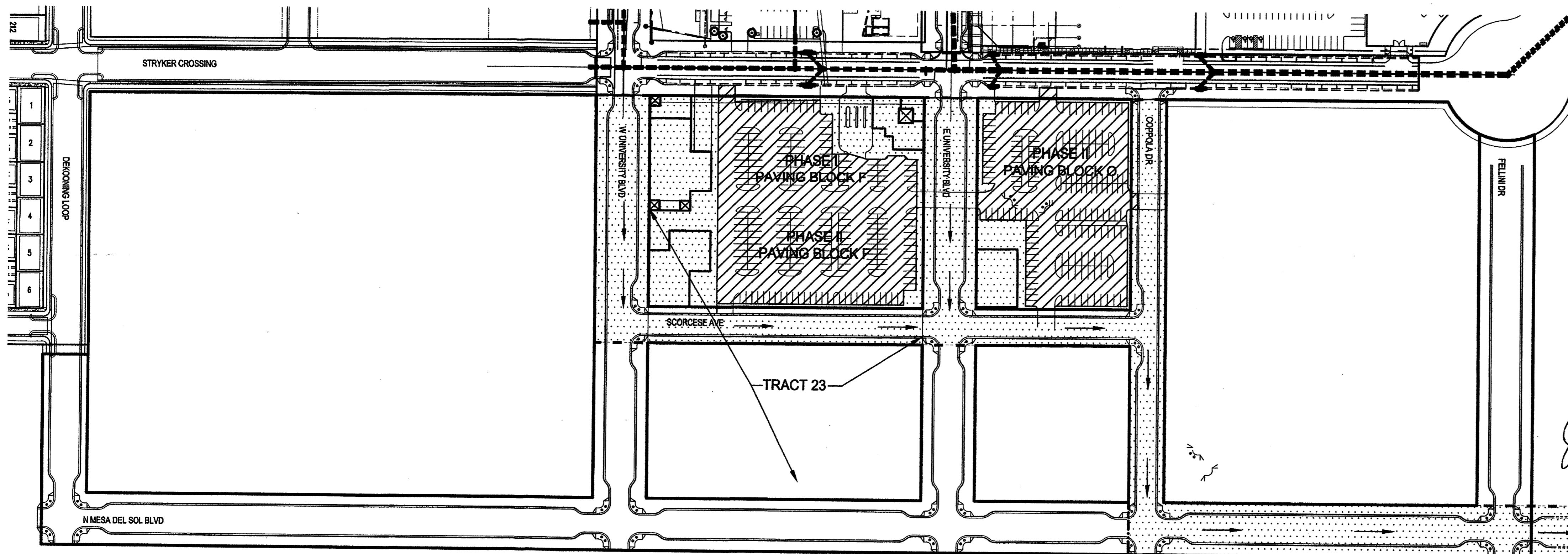
THE FUTURE STREETS AND OFFSITE POND WILL BE CONSTRUCTED WITH THE SUBDIVISION OF TOWN CENTER UNITS 1 & 2 AT MESA DEL SOL. SUSTAINABILITY GOALS WILL BE MET TO THE EXTENT POSSIBLE BY DIRECTING STORMWATER FROM THE IMPERVIOUS SURFACES INTO THE VEGETATED LANDSCAPE AREAS WHICH WILL REMOVE SOME OF THE POLLUTANTS AND CONSERVE WATER. WATERING OF THE LANDSCAPE AREA WILL BE SUPPLEMENTED BY IRRIGATION TO SUSTAIN THE VEGETATION DURING THE DRY SEASONS AND WILL BE EQUIPPED WITH RAIN SENSORS TO SHUT OFF IRRIGATION WHEN RAIN MEETS THE IRRIGATION NEEDS. GROUND WATER RECHARGE AND SUSTAINABILITY GOALS OF WATER QUALITY ARE FURTHER MET BY THE PRIVATE RETENTION POND.

THE PRIVATE RETENTION POND WILL REMOVE THE REMAINING POLLUTANTS FROM WATER NOT PASSED OVER THE BIO-RETENTION LANDSCAPE STRIPS SO THAT NO POLLUTANTS WILL BE CARRIED OFF SITE BY STORMWATER AND THE POND LANDSCAPING WILL BE SUSTAINED LARGELY BY STORMWATER RUNOFF.

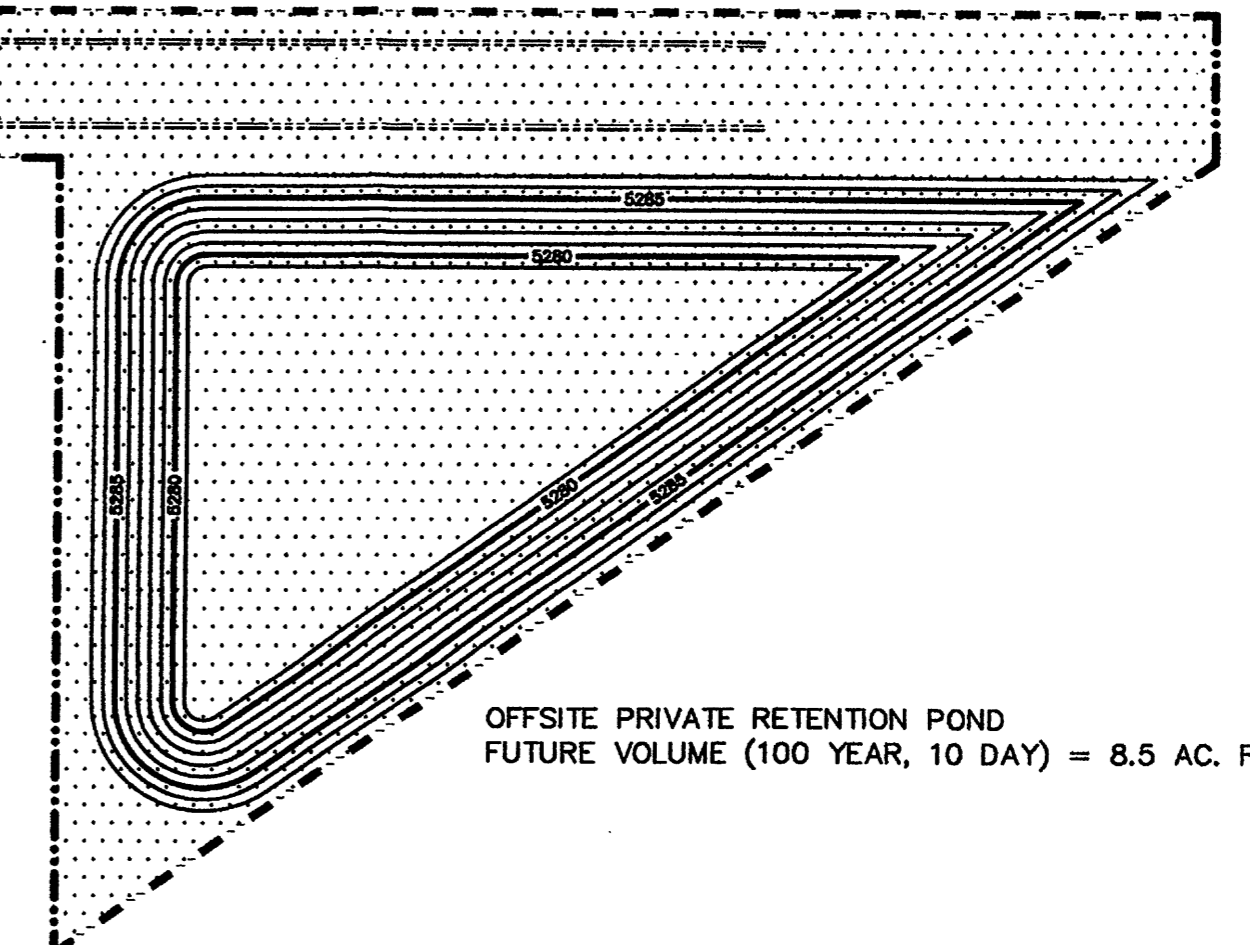
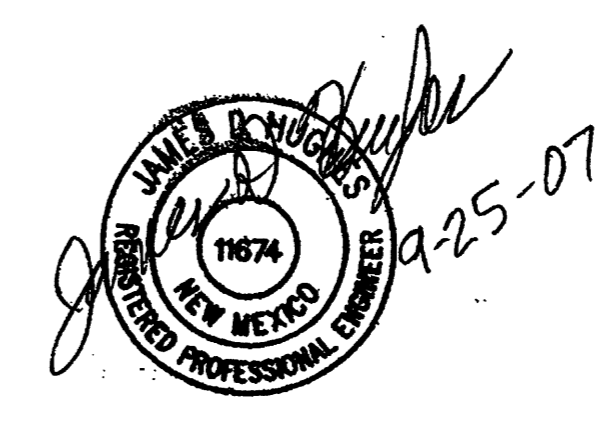
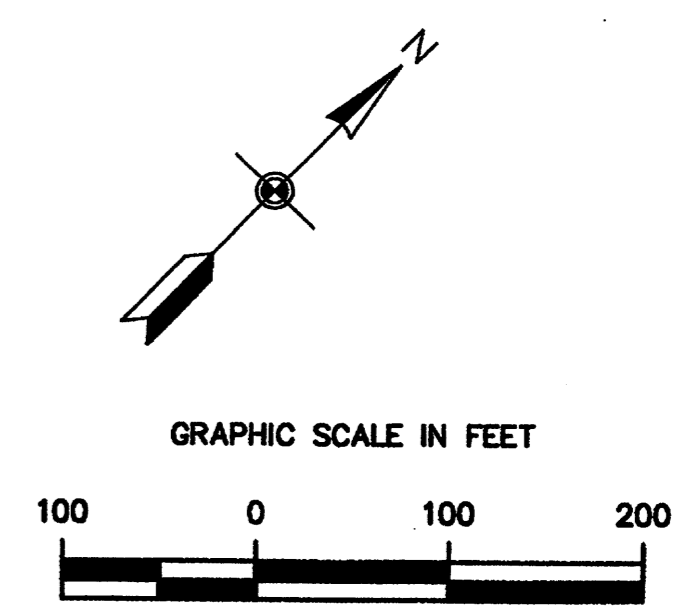


LEGEND

- AREA TO BE ROUGH GRADED
- PAVING THIS PROJECT



CITY ZONE ATLAS MAP #R-16
LEGAL DESCRIPTION
A PORTION OF TRACK 24 AND TRACT A OF THE BULK LAND PLAT FOR INNOVATION PARK CONTAINING 12 AC. MORE OR LESS, AS RECORDED 9/13/07, BOOK 2007C, Pg. 259.



MESA DEL SOL
 COMMUNITY CENTER
 BUILDING A
 ALBUQUERQUE, NEW MEXICO

DRB
SUBMITTAL

DATE: SEPTEMBER 25, 2007

SHEET TITLE:
BLOCK F CONCEPTUAL
GRADING AND DRAINAGE PLAN
SHEET NUMBER:

design architect
antoine predock architect PC
300 12th street nw
albuquerque, nm 87102
505 843 7390 p
505 243 6254 f

executive architect
jon anderson architect
912 roma avenue nw
albuquerque, nm 87102
505 784 8308 p
505 764 2879 f

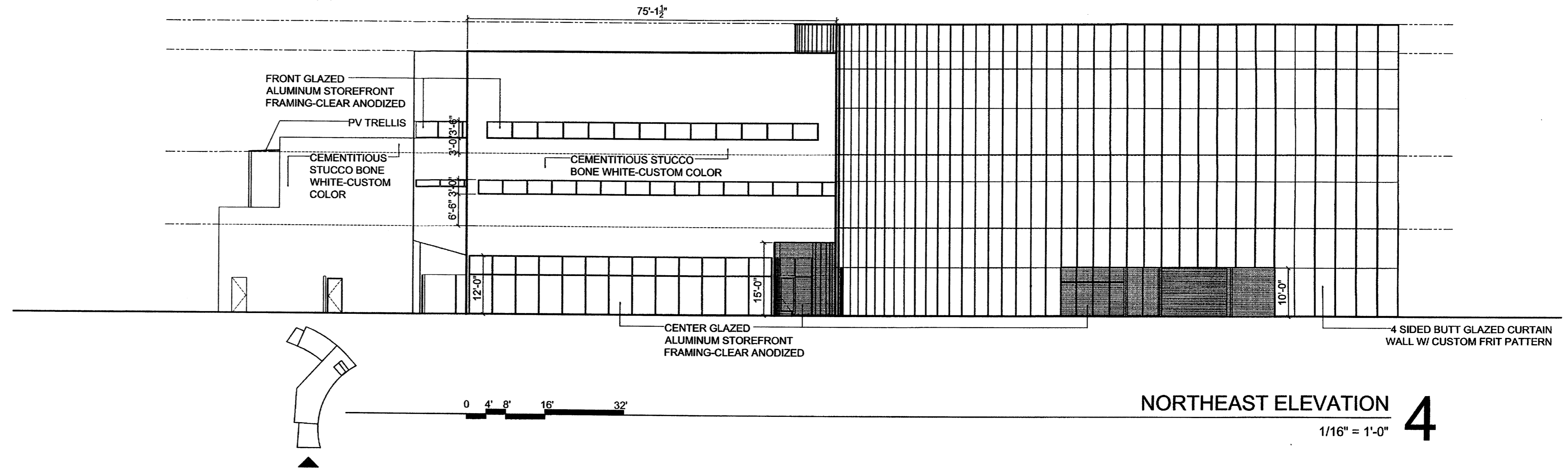
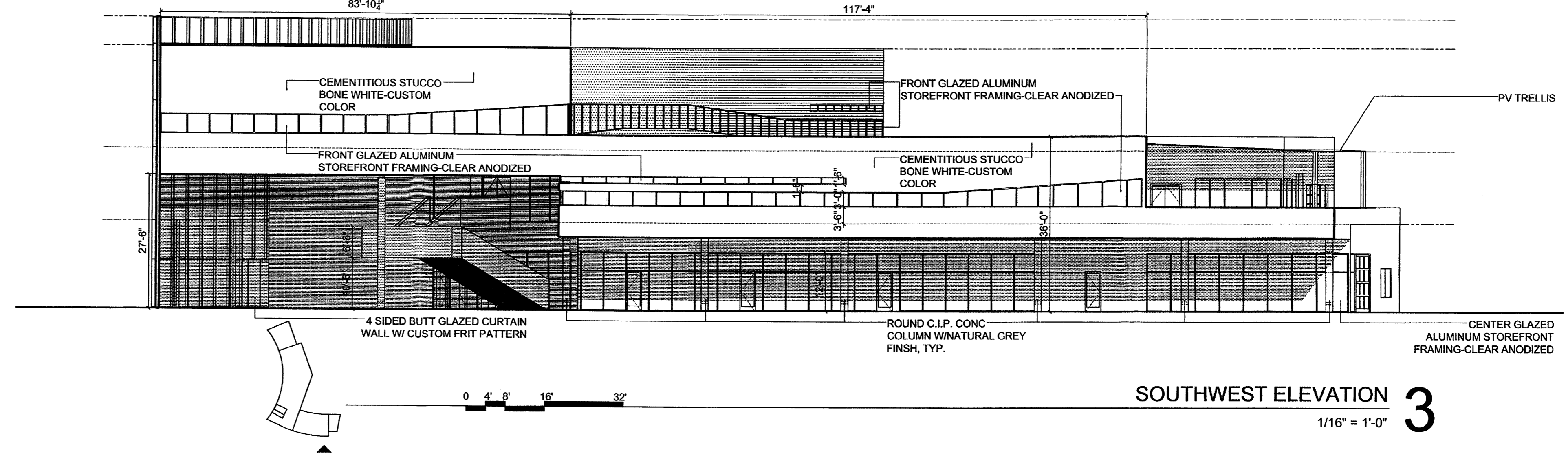
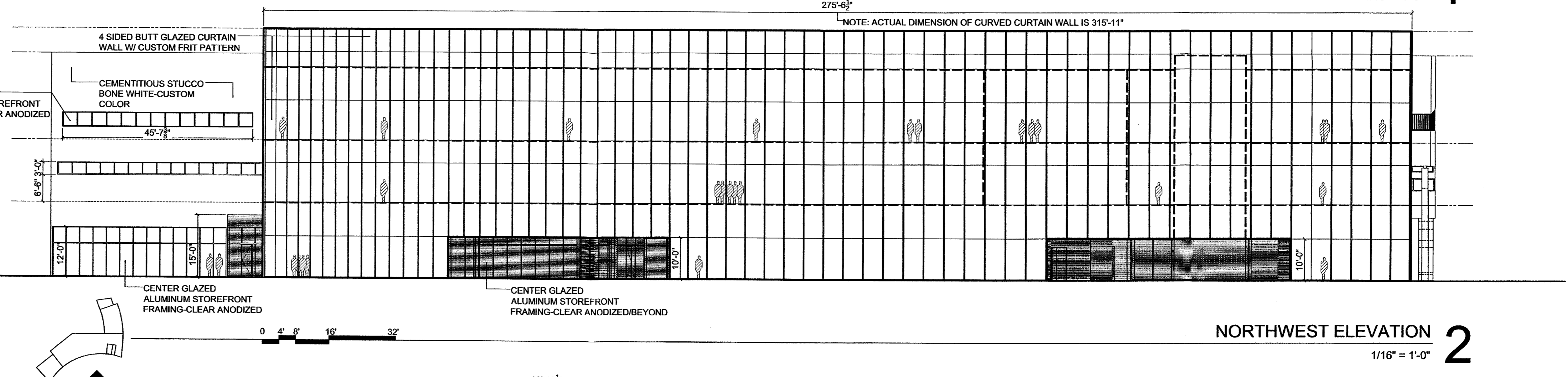
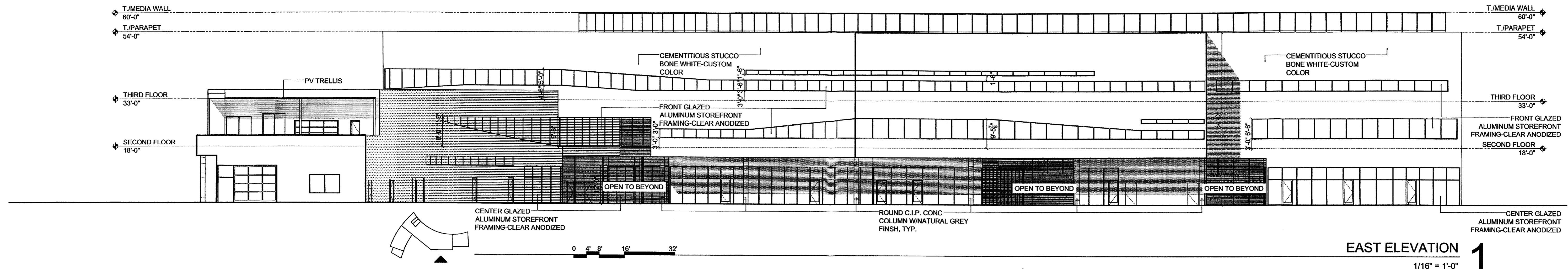
landscape architect
edaw inc
1809 blake street
suite 200
denver, co 80202
303 595 4522 p
303 595 4434 f

civil
urs
6501 americas parkway ne
suite 900
albuquerque, nm 87110
505 855 7500 p
505 855 7555 f

S MESA DEL SOL BLVD

TRACT A

KUBRICK AVE



design architect
antone predock architect PC
 300 12th street nw
 albuquerque, nm 87102
 505 843 7390 p
 505 243 6254 f

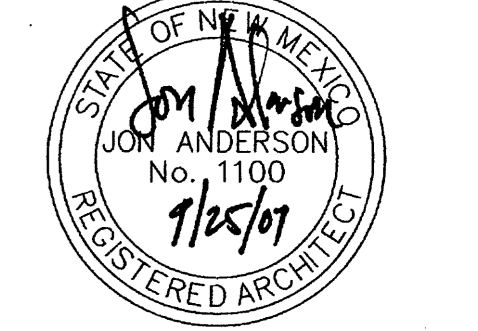
executive architect
jon anderson architect
 912 roma avenue nw
 albuquerque, nm 87102
 505 764 8306 p
 505 764 2879 f

landscape architect
edaw inc
 1809 blake street
 suite 200
 denver, co 80202
 303 595 4522 p
 303 595 4434 f

civil
urs
 6501 americas parkway ne
 suite 900
 albuquerque, nm 87110
 505 855 7500 p
 505 855 7555 f

MESA DEL SOL
 COMMUNITY CENTER
 BUILDING A
 ALBUQUERQUE, NEW MEXICO

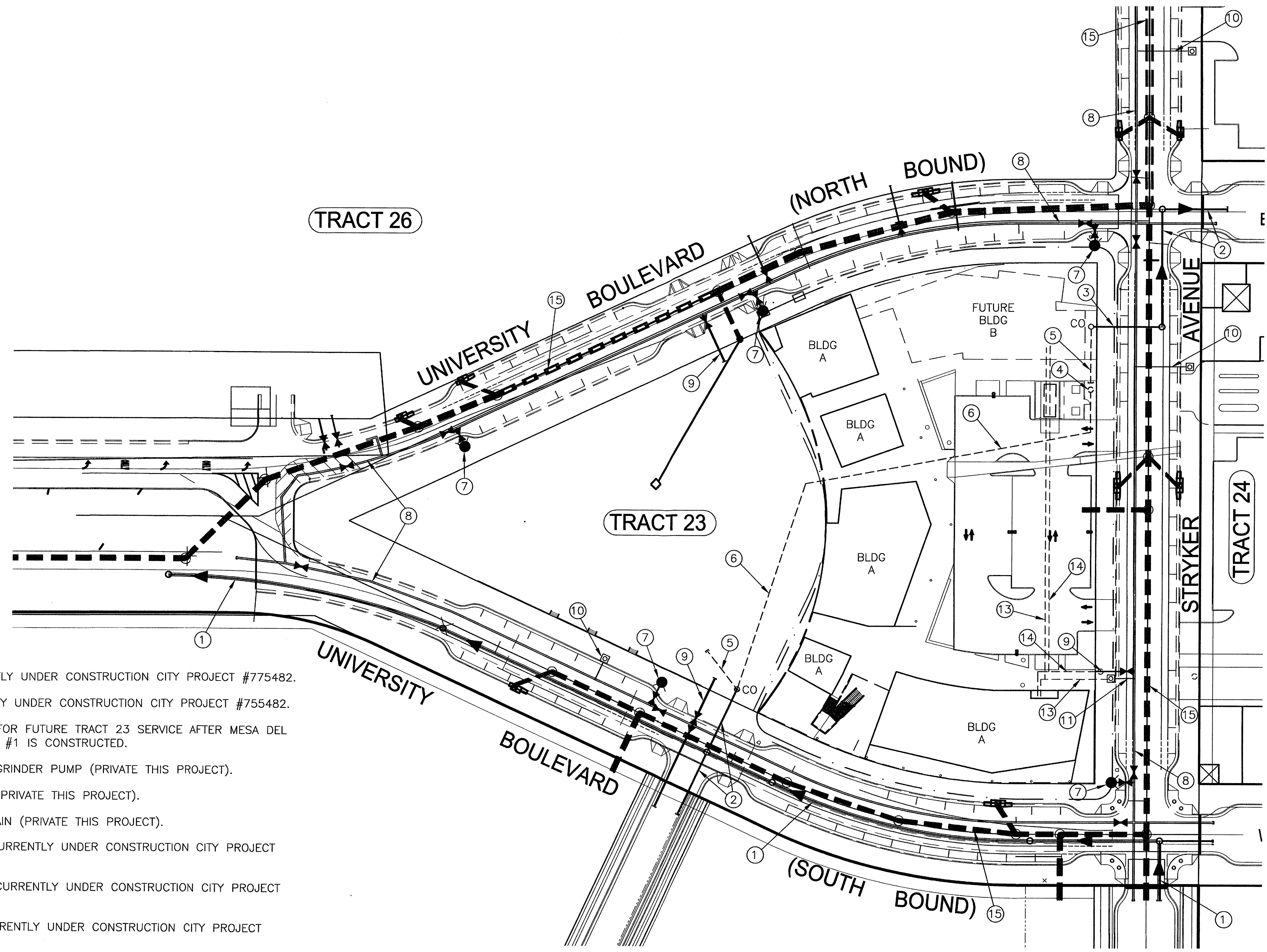
DRB
 SUBMITTAL



DATE: SEPTEMBER 25, 2007

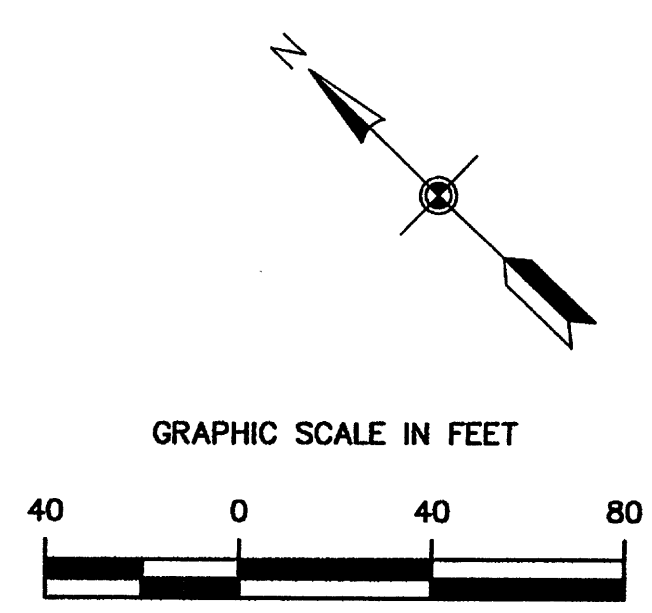
SHEET TITLE:
 BUILDING ELEVATIONS
 SHEET NUMBER:

06



KEYED NOTES

- ① 24" SAS CURRENTLY UNDER CONSTRUCTION CITY PROJECT #775482.
- ② 8" SAS CURRENTLY UNDER CONSTRUCTION CITY PROJECT #755482.
- ③ 6" SAS SERVICE FOR FUTURE TRACT 23 SERVICE AFTER MESA DEL SOL LIFT STATION #1 IS CONSTRUCTED.
- ④ TEMPORARY SAS GRINDER PUMP (PRIVATE THIS PROJECT).
- ⑤ 4" SAS SERVICE (PRIVATE THIS PROJECT).
- ⑥ 2" SAS FORCE MAIN (PRIVATE THIS PROJECT).
- ⑦ FIRE HYDRANTS CURRENTLY UNDER CONSTRUCTION CITY PROJECT #775482.
- ⑧ 12" WATER LINE CURRENTLY UNDER CONSTRUCTION CITY PROJECT #775482.
- ⑨ 6" FIRE LINE CURRENTLY UNDER CONSTRUCTION CITY PROJECT #755482.
- ⑩ 1 1/2" WATER SERVICE CURRENTLY UNDER CONSTRUCTION CITY PROJECT #755482.
- ⑪ 2" WATER SERVICE CURRENTLY UNDER CONSTRUCTION CITY PROJECT #755482.
- ⑫ NOT USED
- ⑬ PRIVATE 2 1/2" WATER LINE THIS PROJECT.
- ⑭ PRIVATE 6" FIRE LINE THIS PROJECT.
- ⑮ STORM SEWER CURRENTLY UNDER CONSTRUCTION CITY PROJECT #755482.



design architect
antoine predock architect PC
 300 12th street nw
 albuquerque, nm 87102
 505 843 7390 p
 505 243 6254 f

executive architect
jon anderson architect
 912 roma avenue nw
 albuquerque, nm 87102
 505 764 8306 p
 505 764 2879 f

landscape architect
edaw inc
 1809 blake street
 suite 200
 denver, co 80202
 303 595 4522 p
 303 595 4434 f

civil
urs
 6501 americas parkway ne
 suite 900
 albuquerque, nm 87110
 505 855 7500 p
 505 855 7555 f

**MESA DEL SOL
 COMMUNITY CENTER
 BUILDING 1
 ALBUQUERQUE, NEW MEXICO**

**DRB
 SUBMITTAL**

James D. Hughes
 1974
 NEW MEXICO
 REGISTERED PROFESSIONAL ENGINEER

DATE: SEPTEMBER 25, 2007

SHEET TITLE:
 UTILITY PLAN

SHEET NUMBER: 7 of 7