

PROJECT # 1005023

PROJECT NUMBER: **1005023**

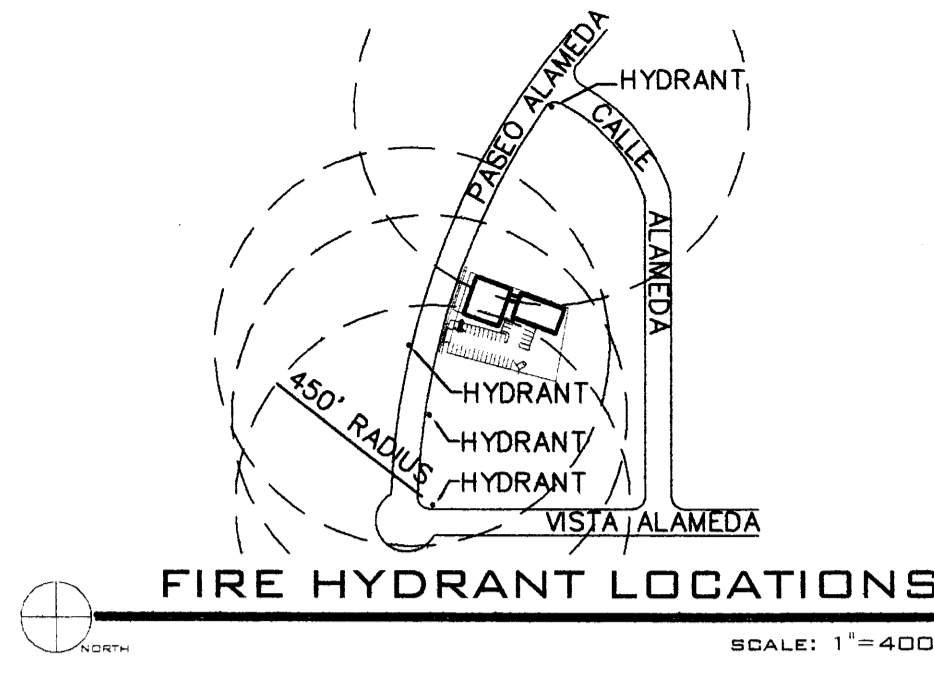
Application Number: **06 DRB - 01010**

DRB SITE DEVELOPMENT PLAN APPROVAL:

Is an Infrastructure List required? () Yes () No If yes, then a set of approved DRC plans with a work order is required for any construction within Public Right-Of-Way or for construction of public improvements.

Traffic Engineering, Transportation Division
 Water Utility Department
 Parks and Recreation Department
 City Engineer
 *Environmental Health (conditional)
 Solid Waste Management
 DRB Chairperson, Planning Department

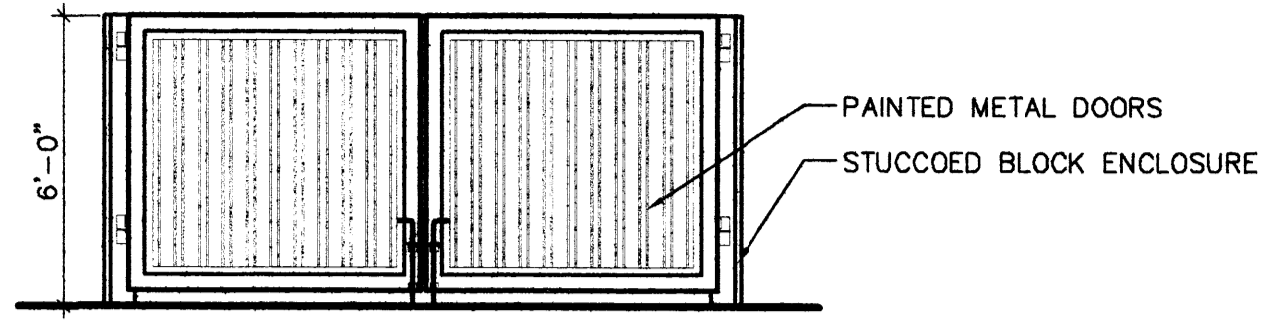
7-20-06
 Date
 7-19-06
 Date
 7/19/06
 Date
 7/19/06
 Date
 Date
 07/20/06
 Date



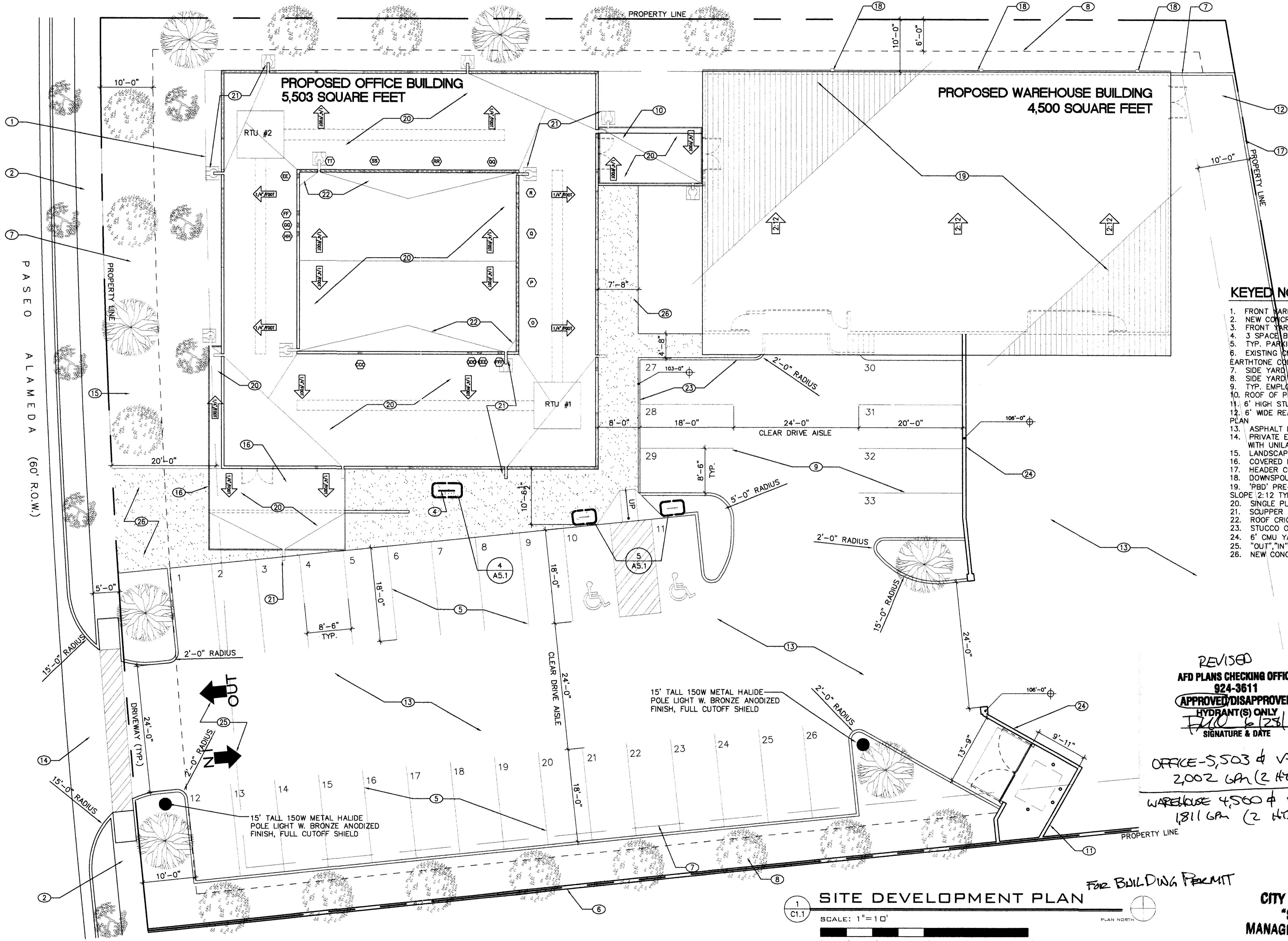
FIRE HYDRANT LOCATIONS
 SCALE: 1"=400'

5,503 SF OFFICE / 1 SPACE PER 200 SF = 27.51 SPACES
 4,500 SF WAREHOUSE / 1 SPACE PER 2,000 SF = 2.25 SPACES
 30 SPACES REQUIRED, 33 SPACES PROVIDED
 2 ACCESSIBLE SPACES REQUIRED AND PROVIDED
 BICYCLE SPACES REQUIRED (1 SPACE / 20 VEHICULAR SPACES): 2
 2 BICYCLE SPACES REQUIRED, 3 PROVIDED

PARKING CALCULATION
 N.T.S.

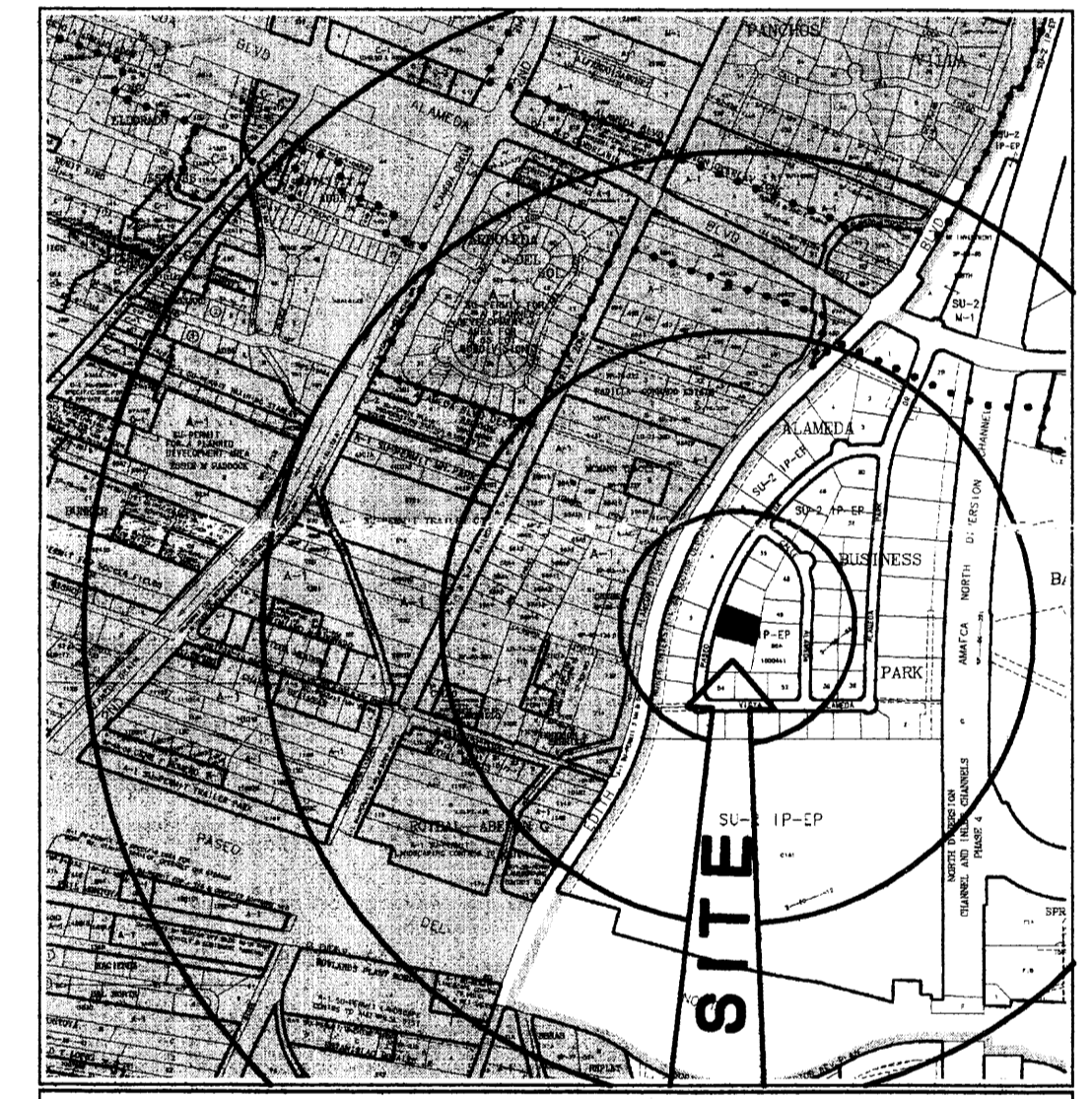


DUMPSTER ENCLOSURE ELEVATION
 SCALE: 1/4"=1'-0"



KEYED NOTES

1. FRONT YARD BUILDING SETBACK
2. NEW CONCRETE SIDEWALK, PER STANDARD DWG 2430
3. FRONT YARD LANDSCAPING BUFFER
4. 3 SPACES BICYCLE RACK
5. TYP. PARKING STALL
6. EXISTING CMU WALL TO REMAIN-NEW STUCCO (LIGHT EARTHSTONE COLOR)
7. SIDE YARD BUILDING SETBACK
8. SIDE YARD LANDSCAPING BUFFER
9. TYP. EMPLOYEE PARKING STALL
10. ROOF OF PEDESTRIAN WALK
11. 6" HIGH STUCCO TRASH ENCLOSURE
12. 6' WIDE REAR YARD PLANTING BUFFER PER LANDSCAPE PLAN
13. ASPHALT DRIVE LOT
14. PRIVATE ENTRANCE DETAIL PER COA STD DWG 2426 WITH UNILATERAL ACCESS RAMPS.
15. LANDSCAPE AREA
16. COVERED ENTRY
17. HEADER CURB
18. DOWNSPOUT AND GUTTER, TYP.
19. 'PBD' PRE-FINISHED METAL ROOF PANEL SYSTEM. SLOPE 2:12 TYP.
20. SINGLE PLY MODIFIED BITUMEN ROOFING.
21. SQUIPPER WITH FLASHBLOCK BELOW.
22. ROOF CRICKET
23. STUCCO ON CAST-IN-PLACE CONCRETE
24. 6" CMU YARD WALL, STUCCO.
25. "OUT" IN ARROWS AND TEXT PAINTED ON PAVING.
26. NEW CONCRETE SIDEWALK



ZONE ATLAS MAP
 GRAPHIC SCALE IN FEET
 0 50 100
 1/2" = 1 MILE
 TRUE NORTH
 Zone Atlas Page
C-16-Z
 City of Albuquerque
 Department of Planning and Economic Development

REVISED
 AFD PLANS CHECKING OFFICE
 924-3611
 APPROVED/DISAPPROVED
 HYDRANT(S) ONLY
 Signature & Date
 6/23/06

OFFICE-5,503 & VB
 2,002 GA (2 HTDS)
 WAREHOUSE 4,500 & V-B
 1,811 GA (2 HTDS)

AFD PLANS CHECKING OFFICE
 924-3611
 APPROVED/DISAPPROVED
 HYDRANT(S) ONLY
 Signature & Date
 6/27/06

VB Count
 2,700 gpm
 3 hydrants.
 1000312

Cheshire Office/Warehouse
 8516 Paseo Alameda N.E.
 Albuquerque, NM

SITE DEVELOPMENT PLAN

SCALE: 1"=10'
 0 5' 10' 20' 40'

CITY OF ALBUQUERQUE
 "SOLID WASTE"
 MANAGEMENT DEPARTMENT
 APPROVED 6/28/06
 H.H.

G. DONALD DUDLEY AIA
ARCHITECT
 SILMS TOWER STUDIO 850
 400 GOLD AVENUE SW
 ALBUQUERQUE, NEW MEXICO
 8 7 1 0 2
 TEL 505.243.8100
 FAX 505.843.6820

date: JULY 10, 2006
 drawn by: GDD, eh
DRB-1
 sequence no. 06