

STORMCLOUD SUBDIVISION UNIT 5

(BEING A REPLAT OF TRACTS B AND J, THE CROSSING AND TRACT R, STORMCLOUD SUBDIVISION, UNIT 3)

THE TOWN OF ATRISCO GRANT

PROJECTED SECTION 9
TOWNSHIP 10 NORTH, RANGE 2 EAST
NEW MEXICO PRINCIPAL MERIDIAN
CITY OF ALBUQUERQUE
BERNALILLO COUNTY, NEW MEXICO
MARCH, 2015

PROJECT NUMBER: 1005029

Application Number:

PLAT APPROVAL

UTILITY APPROVALS

- Public Service Company of New Mexico
Date: 9/14/2015
- New Mexico Gas Company
Date: 4/14/2015
- Qwest Corporation
Date: 4/14/15
- Comcast
Date: 4/14/15

CITY APPROVALS

- City of Albuquerque, Department of Municipal Development
Date: 9/17/15
- Real Property Division
Date: _____
- Environmental Health Department
Date: 5/16/15
- Public Engineering, Transportation Division
Date: 05/16/15
- Parks and Recreation Department
Date: 5/16/15
- AMA/CA
Date: _____
- City Engineer
Date: _____
- DRP Chairperson, Planning Department
Date: _____

SURVOTEK, INC.
Consulting Surveyors
3304 Taylor Street, N.E. Albuquerque, New Mexico 87110 Phone: 505-497-5866 Fax: 505-877-3077

110445 UNIT 5-3-15.dwg

TREASURERS CERTIFICATION

This is to certify that taxes are current and paid on the following:

Bernalillo County Treasurer	Date
-----------------------------	------

PUBLIC UTILITY EASEMENTS

PUBLIC UTILITY EASEMENTS shown on this plat are granted for the common and joint use of:

- Public Service Company of New Mexico (PSCN), a New Mexico corporation, for the installation, maintenance, and other purposes of overhead electrical lines, transformers, and other equipment and related facilities reasonably necessary to provide electrical service.
 - New Mexico Gas Company for installation, maintenance, and service of natural gas lines, valves, and related facilities reasonably necessary to provide natural gas services.
 - Qwest Corporation 5/8/3 Century Link, DC for the installation, maintenance, and service of such facilities reasonably necessary to provide communication services.
 - Cable TV for the installation, maintenance, and service of such facilities, and other related equipment and facilities reasonably necessary to provide cable service.
- Included, is the right to build, rebuild, construct, reconstruct, locate, relocate, change, improve, repair, alter, together with the right to enter upon, and over, said easements, with the right to place, install, and maintain, and to use, and with the right to utilize for the purpose of extending, repairing, and maintaining, electric transmission lines, including sufficient privileges to trim and cut trees, shrubs or bushes which interfere with the purposes set forth herein. No building, sign, pole (aboveground or subsurface), hot tub, concrete pad, or other structure shall be erected or constructed on said easements, nor shall any well be drilled or operated thereon. Property owners shall be solely responsible for correcting any violations. No structures adjacent to or near easements shown on this plat.
- Easements for electric transformers/switchboxes, as installed, shall be set forth in front of transformer/switchgear doors and five (5) feet on each side.

DISCLAIMER

In approving this plat, Public Service Company of New Mexico (PSCN), New Mexico Gas Company (NMGCC) and Qwest Corporation (Qwest) have conducted a Title Search of the 1/8/3 Century Link (DC) did not conduct a Title Search of the properties shown hereon. Consequently, no warranties which may have been granted by prior plat, register or other document and which are not shown on this plat.

PURPOSE OF PLAT

The purpose of this plat is to:

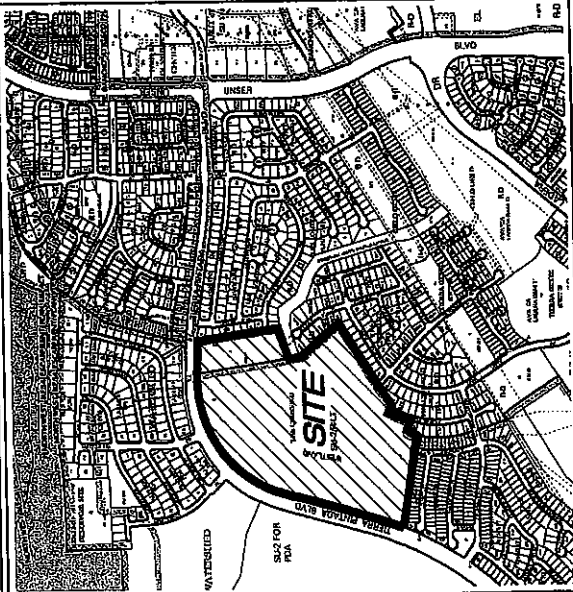
- Create 87 New Lots and 12 Tracts as shown hereon.
- Dedicate the Public Street right of way as shown hereon.
- Show the Easements Vacated by 15098-70067.
- Dedicate Tract "O" as shown hereon to A.M.A.F.C.A. in fee along with special warranty covenants for Drainage right of way.

SURVEYORS CERTIFICATION

I, Russ P. Hugg, New Mexico Professional Surveyor Number 9750, hereby certify that the above plat was prepared by me or under my supervision, that it meets the Standards for Land Surveying as adopted by the Board of Land Surveyors and Professional Surveyors, and that it meets the minimum requirements for surveys and monuments of the Albuquerque Subdivision. I believe that it is true and correct to the best of my knowledge and belief.



Russ P. Hugg
New Mexico Professional Surveyor
March 3, 2015



VICINITY MAP
ZONE ATLAS PAGE H-9-2
Not To Scale

GENERAL NOTES

- Bearings are old and based on the New Mexico State Plane Coordinate System, Central Zone (NAD83).
- Distances are ground.
- Distances along curved lines are arc lengths.
- Record Plat or Deed bearings and distances, where they differ from those established by this field survey, are shown in parentheses ().
- All corners found in place and held were topped with a brass disk stamped "HUGG L.S. 9750" unless otherwise indicated.
- All corners that were set are either a 5/8" rebar with cap stamped "HUGG L.S. 9750" or a concrete nail with brass disk stamped "HUGG L.S. 9750" unless otherwise indicated.
- All street PC, PTs, angle points and street intersections and stationing were established by the standard four line monument "DO NOT DISTURB" PS Number 9750" and will be set flush with the final asphalt lift.
- City of Albuquerque Zone Atlas Page H-9-2.
- No lot shall have direct access to Tierra Pintada Blvd. N.M.
- Any existing open space requirement is met via the provision of detached open space per the provisions of Section 14-16-3-8(A)(3).

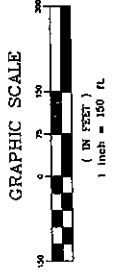
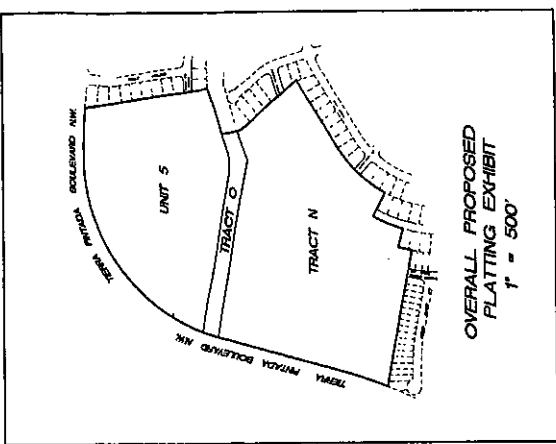
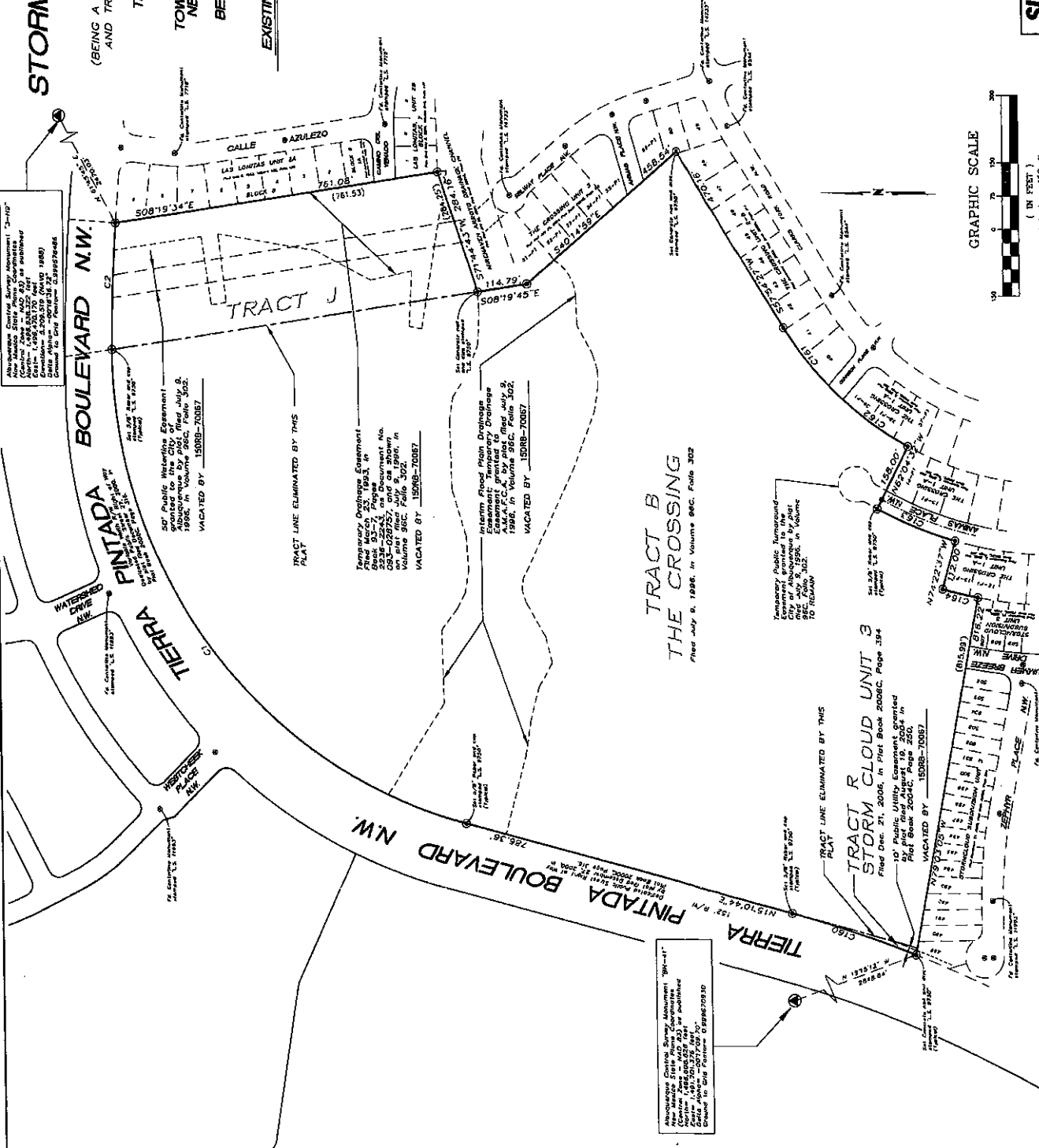
SUBDIVISION DATA

- Total number of existing Tracts: 3
- Total number of lots created: 87
- Total number of Tracts created: 12
- Public Street right of way dedicated by this plat: 5,292.2 Ac.
- Gross Subdivision acreage: 85,241.6 Ac.
- Total miles of new right of way: 0.05 mi.

SHEET INDEX

- Sheet 1 of 9 Approvals, General Notes, Purpose of plat
- Sheet 2 of 9 Legal Description, Fee Consent & Dedication
- Sheet 3 of 9 Overall Existing Plat, Tracts and Vacated Easements and overall proposed platting exhibit
- Sheets 4-8 New Subdivision Lots, Tracts, right of ways and easements
- Sheet 9 of 9 Curve and Line Tables, Easement Details

FLAT OF
STORMCLOUD SUBDIVISION
UNIT 5
 (BEING A REPLAT OF TRACTS B AND J, THE CROSSING
 AND TRACT R, STORMCLOUD SUBDIVISION, UNIT 3)
 SITUATE WITHIN
 THE TOWN OF ATRISCO GRANT
 PROJECTED SECTION 9
 TOWNSHIP 10 NORTH, RANGE 2 EAST
 NEW MEXICO PRINCIPAL MERIDIAN
 CITY OF ALBUQUERQUE
 BERNALILLO COUNTY, NEW MEXICO
 MARCH, 2015
 EXISTING TRACTS AND EASEMENTS VACATED



110445 UNIT 5_3-3-15_SHT3.dwg

Albuquerque Civil Survey Monument 13-1107
 New Mexico State Survey Commission
 Monument No. 1388, Section 9, T10N, R2E, S15E
 Original Monument No. 1388, Section 9, T10N, R2E, S15E
 Elevation 5,200.070 (NAD 83)
 Date of Monument 03/08/2008
 Created in Solid File 03/08/2008

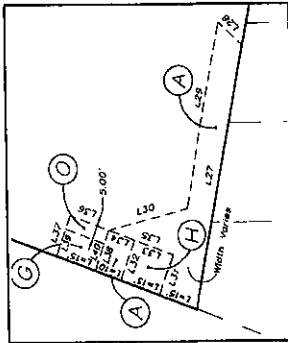
Albuquerque Civil Survey Monument 10-1107
 New Mexico State Survey Commission
 Monument No. 1388, Section 9, T10N, R2E, S15E
 Original Monument No. 1388, Section 9, T10N, R2E, S15E
 Elevation 5,207.000
 Date of Monument 03/08/2008
 Created in Solid File 03/08/2008

PLAT OF STORMCLOUD SUBDIVISION UNIT 5

(BEING A REPLAT OF TRACTS B AND J, THE CROSSING
AND TRACT R, STORMCLOUD SUBDIVISION, UNIT 3)

SITUATE WITHIN
THE TOWN OF ATRISCO GRANT

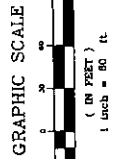
PROJECTED SECTION 9
TOWNSHIP 10 NORTH, RANGE 2 EAST
NEW MEXICO PRINCIPAL MERIDIAN
CITY OF ALBUQUERQUE
BERNALILLO COUNTY, NEW MEXICO
MARCH, 2015



DETAIL 'D' 1" = 30'

LINE	LENGTH	BEARING
L27	84.70	S72°33'05"E
L28	11.78	S45°23'27"E
L29	66.58	N72°33'05"W
L30	23.05	N12°27'30"W
L31	15.01	S68°38'20"E
L32	15.01	N20°23'40"E
L33	10.00	N20°23'40"E
L34	25.00	N40°23'40"E
L35	15.00	N68°38'20"W
L36	15.02	S68°38'20"E
L37	10.09	S68°38'20"E
L40	10.02	S68°38'20"E

Notwithstanding to whom any right or interest in the above described land may hereafter come, the same shall be held subject to the provisions of the original plat of the Stormcloud Subdivision, Unit 3, as recorded in the Public Records of Bernalillo County, New Mexico, Book 10, Page 100.



SEE SHEET 8

NEW EASEMENTS

- 1) Public Utility Easement granted by this plat.
- 2) 10' Public Pedestrian Easement
- 3) Public Waterline Easement granted to A.B.C.W.U.A. by this plat.
- 4) Storm Drain Easement granted to the City of Albuquerque by this plat.
- 5) Maintenance Access Easement granted to A.M.A.F.C.A. by this plat.
- 6) Public Waterline Easement granted to A.B.C.W.U.A. by this plat.
- 7) Public Waterline Easement granted to A.B.C.W.U.A. by this plat. (over all Tract G)
- 8) Public Waterline Easement granted to A.B.C.W.U.A. by this plat. (over all Tract H)
- 9) Public Utility Easement granted to CenturLink by this plat.
- 10) Public Utility Easement granted to PNM by this plat.
- 11) Maintenance Access Easement granted to A.M.A.F.C.A. by this plat.
- 12) Public Waterline Easement granted to A.B.C.W.U.A. by this plat.
- 13) Public Storm Drain Easement granted to the City of Albuquerque by this plat.
- 14) Public Utility Easement granted by this plat.
- 15) 7' x 2' Public Utility Easement granted by this plat.
- 16) Public Utility Easement granted to Comcast by this plat.
- 17) Public Waterline and Sanitary Sewer line easement granted to A.B.C.W.U.A. by this plat.
- 18) Public Waterline and Sanitary Sewer line easement granted to A.B.C.W.U.A. by this plat.
- 19) Public Utility Easement granted to A.B.C.W.U.A. by this plat. (Over all of Tract K)

SIDEWALK CULVERT MAINTENANCE NOTE
SIDEWALK CULVERTS INSTALLED ADJACENT TO TRACT E SHALL BE MAINTAINED BY THE HOMEOWNERS' ASSOCIATION SINCE ESTABLISHED.

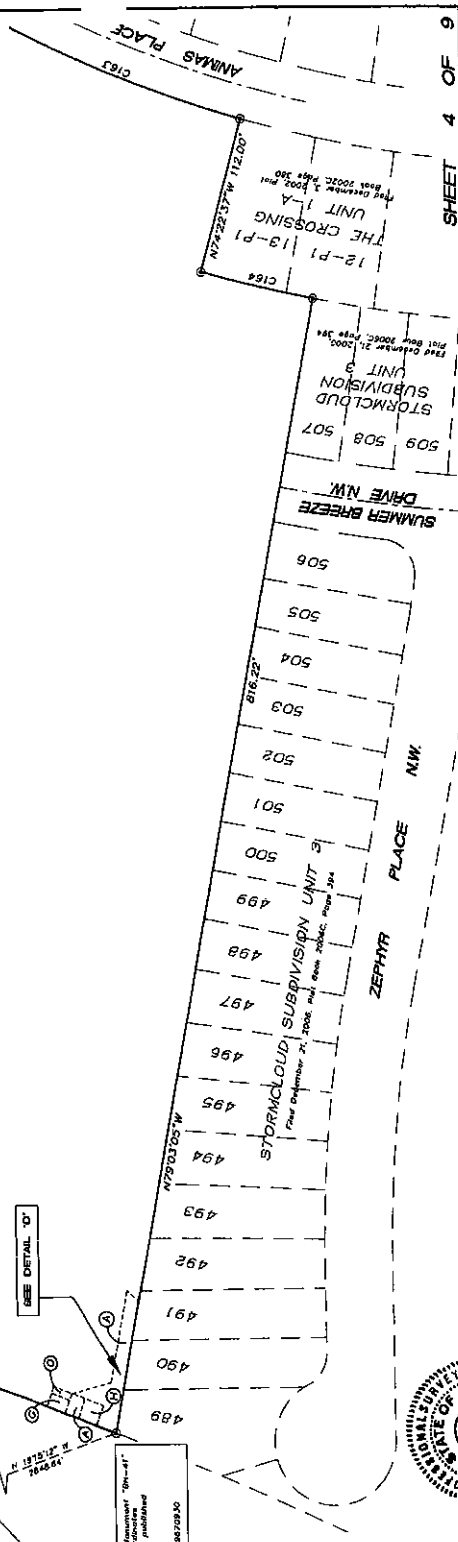
TRACT DESIGNATIONS

TRACTS A THROUGH K SHALL BE CONVEYED TO THE HOMEOWNERS' ASSOCIATION ONCE ESTABLISHED. THESE TRACTS SHALL BE MAINTAINED BY SAID ASSOCIATION. USES FOR TRACTS ARE LISTED BELOW.

- | TRACT | USE |
|-------|--|
| A | LANDSCAPING |
| B | LANDSCAPING |
| C | MAINTENANCE ACCESS ROAD FOR COA, ABCWA AND AMAFCA/WATERLINE AND STORM DRAIN EASEMENT |
| D | WATERLINE EASEMENT/AMAFCA MAINTENANCE ACCESS EASEMENT |
| E | PRIVATE PARK |
| F | LANDSCAPING/PUBLIC PEDESTRIAN ACCESS EASEMENT |
| G | WATERLINE EASEMENT FOR A.B.C.W.U.A. VAULT AND VAULT |
| H | WATERLINE EASEMENT FOR A.B.C.W.U.A. WATERLINE AND VAULT |
| J | PNM, COMCAST, AND CENTURLINK SURFACE EQUIPMENT/PUE. |
| K | LANDSCAPING/WATERLINE AND SANITARY SEWER LINE EASEMENT/DRAINAGE EASEMENT AND PUBLIC UTILITY EASEMENT |
| N | TO BE RETAINED BY OWNER FOR FUTURE DEVELOPMENT |
| O | TO BE DEDICATED TO A.M.A.F.C.A. FOR DRAINAGE CHANNEL |

TRACT N
31.0361 AC.

SEE SHEET 9



SURVOTEK, INC.

Professional Surveyors
6001 Valley View Drive, N.W. Albuquerque, New Mexico 87114
Phone: 505-997-3366
Fax: 505-997-8577

110445 UNIT 5_3-3-15.dwg

SHEET 4 OF 9

SEE SHEET 6

SEE SHEET 8

SIDEWALK CULVERT MAINTENANCE NOTE

SIDEWALK CULVERTS INSTALLED ADJACENT TO TRACT E SHALL BE MAINTAINED BY THE HOMEOWNERS' ASSOCIATION ONCE ESTABLISHED.

TRACT DESIGNATIONS

TRACTS A THROUGH K SHALL BE CONVEYED TO THE HOMEOWNERS' ASSOCIATION ONCE ESTABLISHED. THESE TRACTS SHALL BE MAINTAINED BY SAID ASSOCIATION. USES FOR TRACTS ARE LISTED BELOW.

TRACT USE

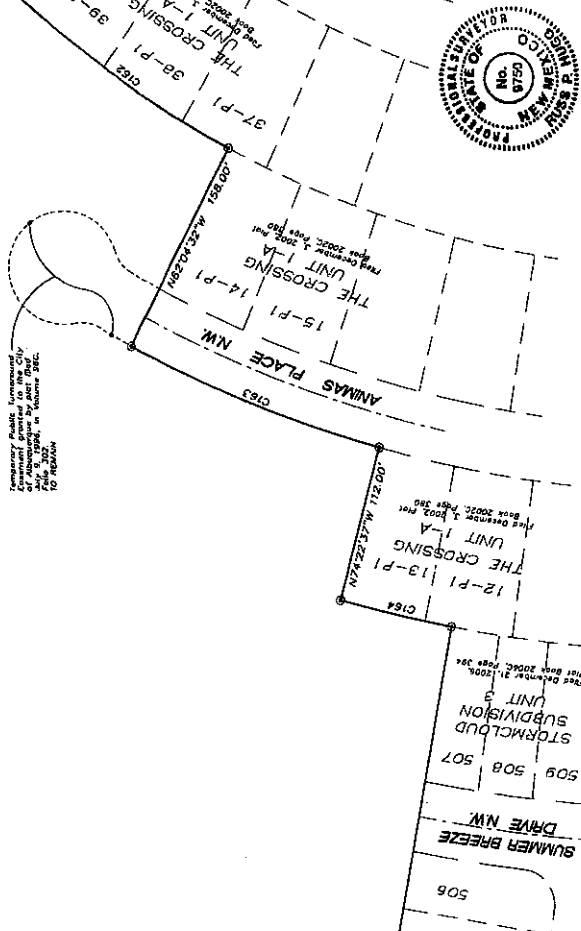
- A LANDSCAPING
- B LANDSCAPING
- C MAINTENANCE ACCESS ROAD FOR COA, ABCWUA AND A.M.A.F.C.A./WATERLINE AND STORM DRAIN EASEMENT
- D WATERLINE EASEMENT/A.M.A.F.C.A. MAINTENANCE ACCESS EASEMENT
- E PRIVATE PARK
- F LANDSCAPING/PUBLIC PEDESTRIAN ACCESS EASEMENT
- G WATERLINE EASEMENT FOR A.B.C.W.U.A. VAULT AND VAULT
- H WATERLINE EASEMENT FOR A.B.C.W.U.A. WATERLINE EQUIPMENT/PVE
- J PNM, COMCAST AND CENTURYLINK SURFACE LANDSCAPING/WATERLINE AND SANITARY SEWER LINE EASEMENT/ DRAINAGE EASEMENT AND PUBLIC UTILITY EASEMENT
- K TO BE REVISION BY OWNER FOR FUTURE CHANNEL
- O TO BE DEDICATED TO A.M.A.F.C.A. FOR DRAINAGE

NEW EASEMENTS

- 10' Public Utility Easement granted by this plot.
- 10' Public Pedestrian Easement
- Public Waterline Easement granted to A.B.C.W.U.A. by this Public Storm Drain Easement granted to the City of Albuquerque by this plot.
- Public Access Easement granted to A.M.A.F.C.A. by this plot.
- Public Waterline and Sanitary Sewer Easement granted to A.B.C.W.U.A. by this plot.
- Public Waterline Easement granted to A.B.C.W.U.A. by this plot. (Over all Tract G)
- Public Waterline Easement granted to A.B.C.W.U.A. by this plot. (Over all Tract H)
- Public Utility Easement granted to CenturyLink by this plot.
- Public Utility Easement granted to PNM by this plot.
- Maintenance Access Easement granted to A.M.A.F.C.A. by this plot.
- Public Waterline Easement granted to A.B.C.W.U.A. by this plot.
- Public Storm Drain Easement granted to the City of Albuquerque by this plot.
- 8' Public Utility Easement granted by this plot.
- 7' x 2' Public Utility Easement granted by this plot.
- Public Utility Easement granted to Comcast by this plot.
- Public Waterline and Sanitary Sewer line easement granted to A.B.C.W.U.A. by this plot.
- Public Utility Easement granted to the City of Albuquerque and Public Utility Easement granted to this plot. (Over all of Tract K)

TRACT N
31.0361 AC.

Consent of the City of Albuquerque to the City of Albuquerque to be recorded on 10/18/2014.



FLAT OF STORMCLOUD SUBDIVISION UNIT 5

(BEING A REPLAT OF TRACTS B AND J, THE CROSSING AND TRACT R, STORMCLOUD SUBDIVISION, UNIT 3) SITUATE WITHIN THE TOWN OF ATRISCO GRANT PROJECTED SECTION 9 TOWNSHIP 10 NORTH RANGE 2 EAST NEW MEXICO PRINCIPAL MERIDIAN CITY OF ALBUQUERQUE BERNALILLO COUNTY NEW MEXICO MARCH, 2015

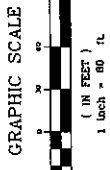
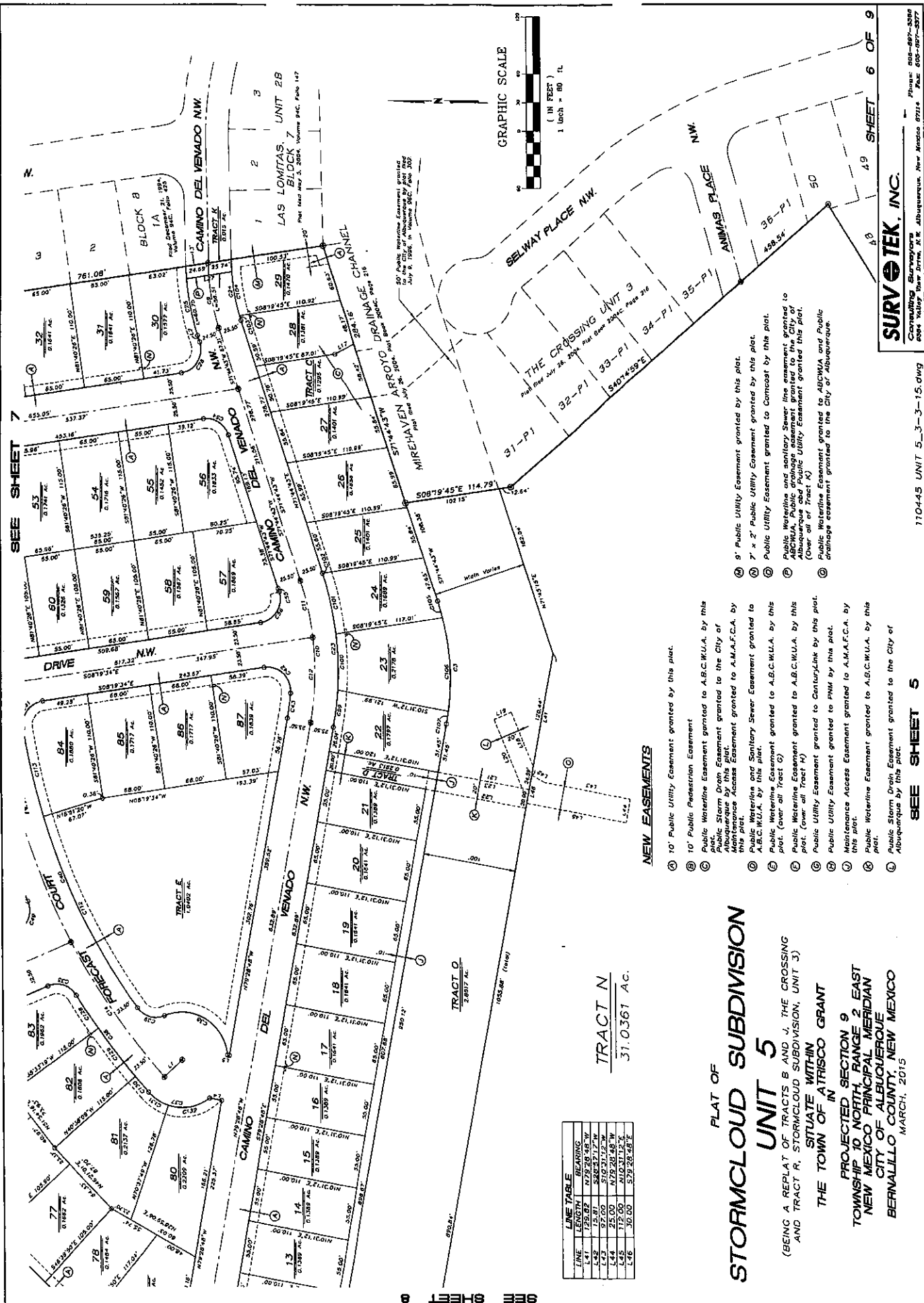
SHEET 5 OF 9

SURVOTEK, INC.

Consulting Surveyors
8000 Valley View Drive, N.W. Albuquerque, New Mexico 87114
Phone: 505-877-8882 Fax: 505-877-3872

110445 UNIT 5_3-3-15.dwg

SEE SHEET 4



LINE	LENGTH	BEARING
L-41	125.82	S78°28'48"W
L-42	15.81	S88°57'17"W
L-43	25.00	S78°28'48"W
L-44	25.00	N10°21'12"E
L-45	112.00	N10°21'12"E
L-46	30.00	S78°28'48"E

TRACT N
31.0361 AC.

FLAT OF
STORMCLOUD SUBDIVISION
UNIT 5

(BEING A REPLAT OF TRACTS B AND J, THE CROSSING AND TRACT R, STORMCLOUD SUBDIVISION, UNIT 3) SITUATE WITHIN THE TOWN OF ATRISCO GRANT PROJECTED SECTION 9 TOWNSHIP 10 NORTH, RANGE 2 EAST NEW MEXICO PRINCIPAL MERIDIAN CITY OF ALBUQUERQUE BERNALILLO COUNTY, NEW MEXICO MARCH, 2015

NEW EASEMENTS

- 10' Public Utility Easement granted by this plot.
- Public Waterline Easement granted to A.B.C.W.U.A. by this plot.
- Public Storm Drain Easement granted to the City of Albuquerque by this plot.
- Maintenance Access Easement granted to A.M.A.F.C.A. by this plot.
- Public Waterline and Sanitary Sewer Easement granted to A.B.C.W.U.A. by this plot.
- Public Waterline Easement granted to A.B.C.W.U.A. by this plot. (over all Tract C)
- Public Waterline Easement granted to A.B.C.W.U.A. by this plot. (over all Tract H)
- Public Utility Easement granted to CenturyLink by this plot.
- Public Utility Easement granted to PNM by this plot.
- Maintenance Access Easement granted to A.M.A.F.C.A. by this plot.
- Public Waterline Easement granted to A.B.C.W.U.A. by this plot.
- Public Storm Drain Easement granted to the City of Albuquerque by this plot.

- 9' Public Utility Easement granted by this plot.
- 7' x 2' Public Utility Easement granted to Comcast by this plot.
- Public Utility Easement granted to Comcast by this plot.
- Public Waterline and Sanitary Sewer line easement granted to ABCWA. Public drainage easement granted to the City of Albuquerque and Public Utility Easement granted to this plot. (Over all of Tract K)
- Public Waterline Easement granted to ABCWA and Public Drainage easement granted to the City of Albuquerque.

SURVTEK, INC.
Consulting Surveyors
605 Valley Road Drive, N.E. Albuquerque, New Mexico 87114
Phone: 505-887-3388
Fax: 505-887-3377

110445 UNIT 5_3-3-15.dwg

SEE SHEET 5

6 OF 9

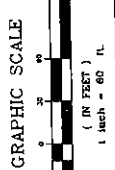
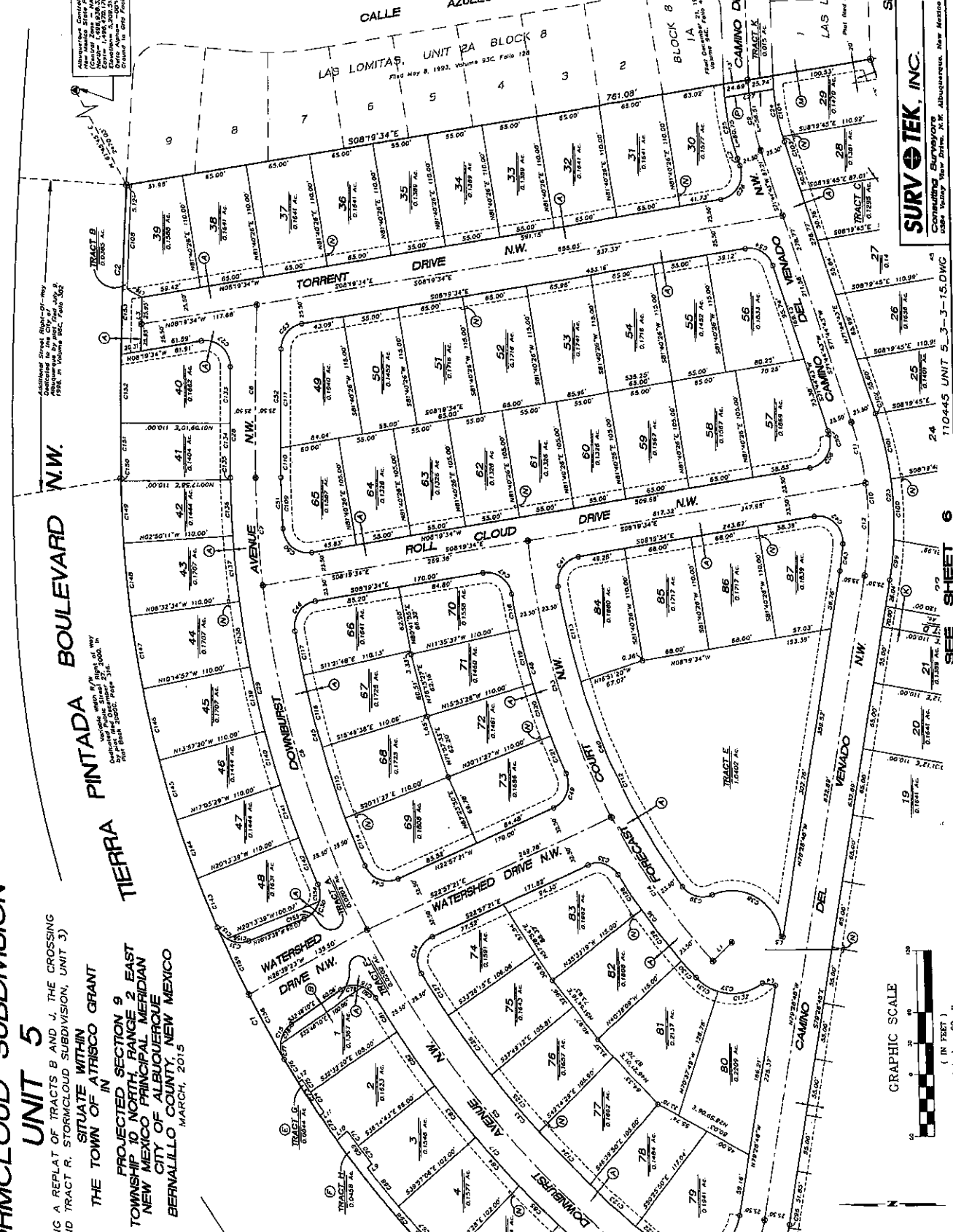
FLAT OF STORMCLOUD SUBDIVISION UNIT 5

(BEING A REPLAT OF TRACTS B AND J, THE CROSSING AND TRACT R, STORMCLOUD SUBDIVISION, UNIT 3)
SITUATE WITHIN
THE TOWN OF ATRISCO GRANT
PROJECTED SECTION 9
TOWNSHIP 10 NORTH, RANGE 2 EAST
NEW MEXICO PRINCIPAL MERIDIAN
NEW CITY OF ALBUQUERQUE
BERNALILLO COUNTY, NEW MEXICO
MARCH, 2015

Albuquerque, New Mexico
New Mexico State Public, Chartered
Surveyors License No. 11592
Professional Seal
Elevation 5,302.51' (NAVD 1983)
Distance to Grid Point: 0.98887846

Address: Street Right-of-Way
Abandonment by City and County
1988, in Volume 80C, Page 502

Volume 100, Page 100
New Mexico State Public, Chartered
Surveyors License No. 11592
Professional Seal
Elevation 5,302.51' (NAVD 1983)
Distance to Grid Point: 0.98887846



SURVOTEK, INC.
Consulting Surveyors
2000 University Blvd., N.W., Albuquerque, New Mexico 87114
Phone: 505-897-5308
Fax: 505-897-1877

SEE SHEET 6
SEE SHEET 7 of 9

SEE SHEET 8
SEE SHEET 9

FLAT OF STORMCLOUD SUBDIVISION UNIT 5

(BEING A REPLAT OF TRACTS B AND J, THE CROSSING AND TRACT R, STORMCLOUD SUBDIVISION, UNIT 3) SITUATE WITHIN THE TOWN OF ATRISCO GRANT

PROJECTED SECTION 9 TOWNSHIP 10 NORTH, RANGE 2 EAST NEW MEXICO PRINCIPAL MERIDIAN CITY OF ALBUQUERQUE BERNALILLO COUNTY, NEW MEXICO MARCH, 2015

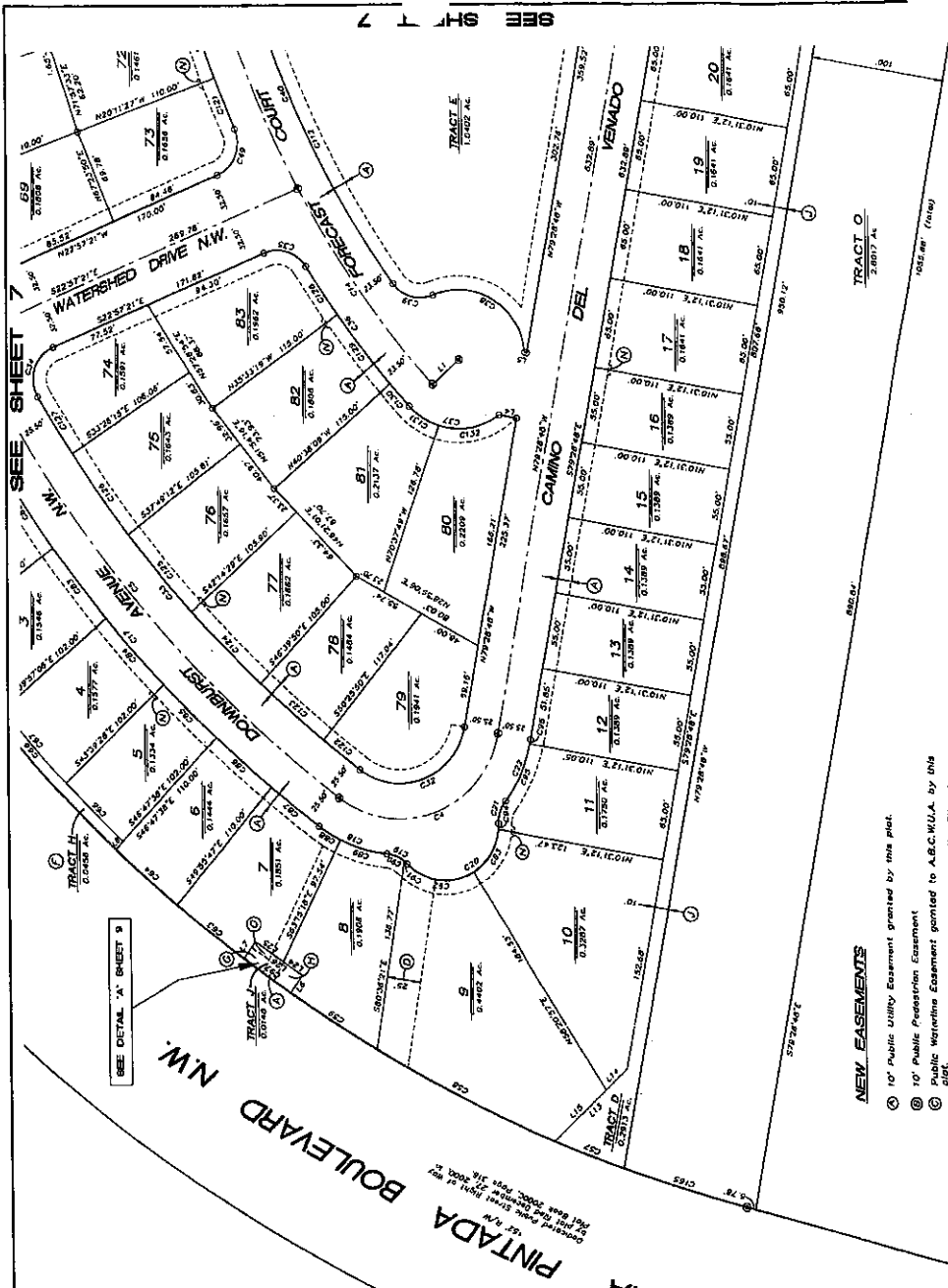
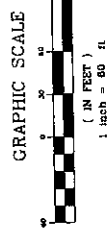
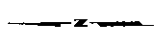
SIDEWALK CULVERT MAINTENANCE NOTE

SIDEWALK CULVERTS INSTALLED ADJACENT TO TRACT E OWNERSHIP WILL BE MAINTAINED BY THE HOMEOWNERS' ASSOCIATION ONCE ESTABLISHED.

TRACT DESIGNATIONS

TRACTS A THROUGH K SHALL BE CONVEYED TO THE HOMEOWNERS' ASSOCIATION ONCE ESTABLISHED. THESE TRACTS ARE LISTED BELOW.

- TRACT USE
- A. LANDSCAPING
 - B. MAINTENANCE ACCESS ROAD FOR COAL, ARROWIA AND AMAFCA/WATERLINE AND STORM DRAIN EASEMENT
 - C. WATERLINE EASEMENT/AMAFCA MAINTENANCE ACCESS EASEMENT
 - D. PRIVATE PARK
 - E. LANDSCAPING/PUBLIC PEDESTRIAN ACCESS EASEMENT
 - F. WATERLINE EASEMENT FOR A.B.C.W.U.A. VAULT AND VAULT
 - G. PAUL COMCAST AND CENTURYLINK SURFACE EQUIPMENT/PUE.
 - H. LANDSCAPING/WATERLINE AND SANITARY SEWER UTILITY SEWERAGE EASEMENT AND PUBLIC UTILITY SEWERAGE
 - I. TO BE RETAINED BY OWNER FOR FUTURE DEVELOPMENT
 - J. TO BE DEDICATED TO A.M.A.F.C.A. FOR DRAINAGE CHANNEL.



NEW EASEMENTS

- 10' Public Utility Easement granted by this plat.
- 10' Public Pedestrian Easement
- Public Waterline Easement granted to A.B.C.W.U.A. by this plat.
- Public Sewer Easement granted to A.M.A.F.C.A. by this plat.
- Maintenance Access Easement granted to A.M.A.F.C.A. by this plat.
- Public Waterline and Sanitary Sewer Easement granted to A.B.C.W.U.A. by this plat.
- Public Waterline Easement granted to A.B.C.W.U.A. by this plat. (over all Tract G)
- Public Waterline Easement granted to A.B.C.W.U.A. by this plat. (over all Tract H)
- Public Utility Easement granted to CenturyLink by this plat.
- Public Utility Easement granted to PMM by this plat.
- Maintenance Access Easement granted to A.M.A.F.C.A. by this plat.
- Public Waterline Easement granted to A.B.C.W.U.A. by this plat.
- Public Sewer Easement granted to the City of Albuquerque by this plat.
- 9' Public Utility Easement granted by this plat.
- 7' x 2' Public Utility Easement granted by this plat.
- Public Utility Easement granted to Comcast by this plat.
- Public Waterline and sanitary Sewer line easement granted to A.B.C.W.U.A. by this plat.
- Public Utility Easement granted to PMM by this plat.
- Abandonment and Public Utility Easement granted this plat. (Over all of Tract K)

TRACT N
31.0361 AC.



SURVOTEK, INC.
Consulting Surveyors
888 Valley View Drive, N.E. Albuquerque, New Mexico 87114 Phone: 505-884-0800
Fax: 505-884-5877

STORMCLOUD SUBDIVISION

UNIT 5

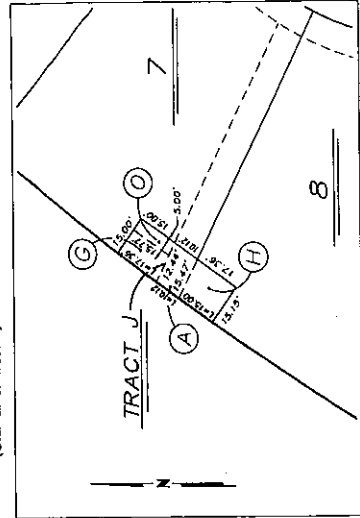
(BEING A REPLAT OF TRACTS B AND J, THE CROSSING AND TRACT R, STORMCLOUD SUBDIVISION, UNIT 3)

SITUATE WITHIN THE TOWN OF ATRISCO GRANT

PROJECTED SECTION 9 TOWNSHIP 10 NORTH, RANGE 2 EAST NEW MEXICO PRINCIPAL MERIDIAN CITY OF ALBUQUERQUE BERNALILLO COUNTY, NEW MEXICO MARCH, 2015

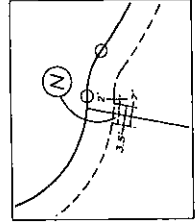
NEW EASEMENTS

- 10' Public Utility Easement granted by this plat.
- 10' Public Pedestrian Easement
- Public Waterline Easement granted to A.B.C.W.U.A. by this plat.
- Public Storm Drain Easement granted to the City of Albuquerque by this plat.
- Public Waterline Easement granted to A.A.A.F.C.A. by this plat.
- Public Waterline and Sanitary Sewer Easement granted to A.B.C.W.U.A. by this plat.
- Public Waterline Easement granted to A.B.C.W.U.A. by this plat. (over all Tract G)
- Public Waterline Easement granted to A.B.C.W.U.A. by this plat. (over all Tract H)
- Public Utility Easement granted to CenturyLink by this plat.
- Public Utility Easement granted to PNM by this plat.
- Maintenance Access Easement granted to A.A.A.F.C.A. by this plat.
- Public Waterline Easement granted to A.B.C.W.U.A. by this plat.
- Public Storm Drain Easement granted to the City of Albuquerque by this plat.
- Public Utility Easement granted by this plat.
- 7 x 2' Public Utility Easement granted by this plat.
- Public Utility Easement granted to Comcast by this plat.
- Public Waterline and Sanitary Sewer Easement granted to the City of Albuquerque and Public Utility Easement granted by this plat. (Over all of Tract K)

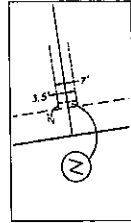


DETAIL 'A' 1" = 30'
(FROM SHEET 8)

CURVE	LENGTH	RADIUS	TANGENT	CHORD	CHORD BEARING	DELTA
C101	65.28	322.50	32.75	65.17	N77.31.56 E	1129.27
C102	0.24	328.50	0.12	0.24	N71.35.58 E	1.28.02
C103	5.74	260.00	5.74	5.74	S81.26.35 W	16.24.54
C104	18.24	260.00	9.12	18.24	N73.45.17 E	4.01.07
C105	98.78	260.00	49.39	98.78	S85.58.54 E	21.46.08
C106	12.55	260.00	6.28	12.55	S80.50.25 E	1.95.13
C107	102.14	454.11	51.07	102.14	S88.54.25 W	3.01.47
C108	48.90	474.00	24.45	48.90	N89.24.40 W	1.30.59
C109	82.90	474.00	41.45	82.90	S83.30.02 W	19.10.01
C110	59.10	674.00	29.55	59.10	S77.05.35 W	16.33.48
C111	50.33	674.00	25.17	50.33	S72.00.58 W	14.24.48
C112	21.33	674.00	10.67	21.33	S72.00.58 W	4.24.48
C113	21.33	674.00	10.67	21.33	S72.00.58 W	4.24.48
C114	43.67	338.00	21.84	43.67	S79.58.08 W	2.39.53
C115	35.28	718.00	17.63	35.28	S79.46.40 W	1.47.55
C116	65.33	718.00	32.67	65.33	S71.52.11 W	4.17.55
C117	34.36	718.00	17.18	34.36	S69.14.33 W	2.06.09
C118	34.46	938.00	17.23	34.46	S48.31.05 W	3.46.00
C119	61.73	938.00	30.88	61.73	S41.27.10 W	3.46.00
C120	74.48	938.00	36.24	74.48	S45.35.70 W	4.22.17
C121	74.48	938.00	36.24	74.48	S45.35.70 W	4.22.17
C122	44.36	938.00	22.18	44.36	S44.21.12 W	4.22.57
C123	41.85	718.00	20.93	41.85	S48.02.17 W	2.37.04
C124	63.76	718.00	31.88	63.76	S46.08.43 W	3.20.04
C125	21.83	718.00	10.92	21.83	S51.54.16 W	1.04.50
C126	32.52	500.00	16.26	32.52	S32.42.51 W	2.84.12
C127	54.65	4125.00	27.33	54.65	S69.22.35 E	5.43.17
C128	24.19	950.00	12.10	24.19	N89.12.57 W	0.43.54
C129	24.19	950.00	12.10	24.19	N89.12.57 W	0.43.54
C130	84.18	950.00	42.09	84.18	S85.58.33 W	3.00.10
C131	84.04	950.00	42.03	84.04	S81.36.15 W	3.42.23
C132	54.19	950.00	27.10	54.19	S77.53.52 W	3.42.23
C133	54.19	950.00	27.10	54.19	S77.53.52 W	3.42.23
C134	51.61	1100.00	25.81	51.61	S64.21.18 W	2.49.24
C135	60.21	1100.00	30.11	60.21	S69.26.23 W	2.39.57
C136	60.21	1100.00	30.11	60.21	S71.20.26 W	3.09.10
C137	71.16	1100.00	35.58	71.16	S74.28.36 W	3.08.10
C138	71.16	1100.00	35.58	71.16	S77.53.52 W	3.42.23
C139	71.16	1100.00	35.58	71.16	S77.53.52 W	3.42.23
C140	60.31	1100.00	30.15	60.31	S68.94.54 W	3.02.17
C141	54.07	4546.13	27.04	54.07	N89.12.57 W	0.43.54
C142	66.36	4546.13	33.18	66.36	N89.12.57 W	0.43.54
C143	16.62	4546.13	8.31	16.62	N88.47.45 E	5.04.10
C144	23.14	250.00	11.57	23.14	S48.42.33 E	3.94.17
C145	23.14	250.00	11.57	23.14	S48.42.33 E	3.94.17
C146	23.14	250.00	11.57	23.14	S48.42.33 E	3.94.17
C147	54.92	250.00	27.46	54.92	S66.20.15 E	5.10.74
C148	71.81	1100.00	35.91	71.81	S60.20.17 W	3.42.14
C149	71.81	1100.00	35.91	71.81	S60.20.17 W	3.42.14
C150	72.08	1000.00	36.04	72.08	S59.72.59 W	3.45.53
C151	100.45	1000.00	50.23	100.45	S59.72.59 W	5.50.25
C152	100.45	1000.00	50.23	100.45	S50.44.51 W	1.47.19
C153	208.45	762.00	104.23	208.45	S45.45.31 W	15.50.28
C154	197.52	950.00	98.74	197.52	S41.16.45 W	4.44.18
C155	93.89	1100.00	47.03	93.89	S17.37.37 W	4.53.45



DETAIL 'B' 1" = 30'



DETAIL 'C' 1" = 30'

CURVE	LENGTH	RADIUS	TANGENT	CHORD	CHORD BEARING	DELTA
C156	62.23	1100.00	31.12	62.23	S36.26.58 W	3.14.29
C157	60.21	1100.00	30.11	60.21	S41.39.17 W	3.08.10
C158	178.74	1092.00	89.37	178.74	S47.58.25 W	3.00.10
C159	58.77	1092.00	29.39	58.77	S48.11.43 W	3.42.23
C160	48.33	1092.00	24.17	48.33	S51.16.50 W	2.32.09
C161	48.00	1098.00	24.00	48.00	S53.58.17 W	2.05.37
C162	28.21	1098.00	14.11	28.21	S53.10.08 W	1.33.18
C163	17.76	1098.00	8.89	17.76	S55.26.49 W	0.75.18
C164	34.00	1095.00	16.00	34.00	S57.33.06 W	1.59.19
C165	23.64	1095.00	11.82	23.64	S58.50.34 W	1.14.13
C166	14.38	1095.00	7.19	14.38	S59.25.01 W	0.45.10
C167	26.56	1090.00	13.28	26.56	S60.58.18 W	1.17.11
C168	35.00	1095.00	17.50	35.00	S62.58.58 W	1.33.18
C169	23.18	250.00	11.59	23.18	S65.14.18 W	3.42.23
C170	23.18	250.00	11.59	23.18	S65.14.18 W	3.42.23
C171	23.18	250.00	11.59	23.18	S65.14.18 W	3.42.23
C172	23.18	250.00	11.59	23.18	S65.14.18 W	3.42.23
C173	64.04	950.00	32.03	64.04	S48.11.43 W	3.42.23
C174	54.19	950.00	27.10	54.19	S44.46.27 W	3.08.10
C175	54.19	950.00	27.10	54.19	S41.39.17 W	2.32.09
C176	100.45	1000.00	50.23	100.45	S33.02.20 W	10.43.21
C177	96.38	1000.00	48.19	96.38	S12.22.52 W	20.43.46
C178	18.25	250.00	7.33	18.25	S62.26.57 E	3.39.48
C179	3.02	250.00	1.51	3.02	S64.59.18 E	2.71.57
C180	53.93	400.00	26.98	53.93	S58.16.34 E	5.31.41
C181	4.35	400.00	2.18	4.35	S66.00.42 E	6.13.55
C182	43.86	100.50	21.94	43.86	S62.36.49 E	28.28.86
C183	3.15	100.50	1.57	3.15	S78.34.58 E	1.17.44
C184	42.48	1100.00	21.24	42.48	S48.35.16 W	11.22.49
C185	59.05	1100.00	29.53	59.05	S62.55.02 E	6.52.46
C186	58.00	250.50	29.01	58.00	N66.27.42 E	10.22.06

110445 UNIT 5_3-3-15.dwg

SURV TEK, INC.
Consulting Surveyors
8085 Valley View Drive, N.E. Albuquerque, New Mexico 87114

Phone: 505-887-3888
Fax: 505-887-3877