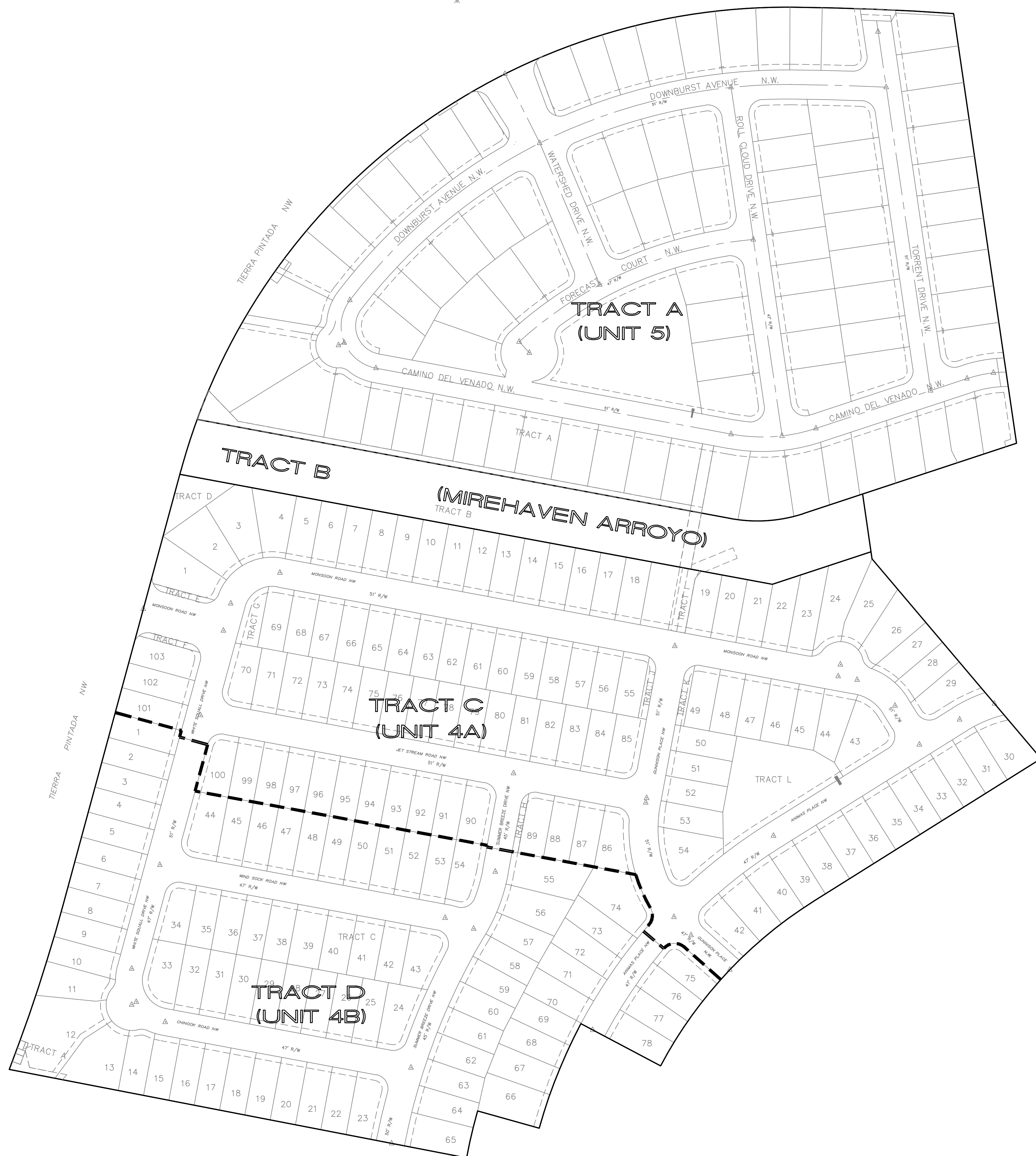
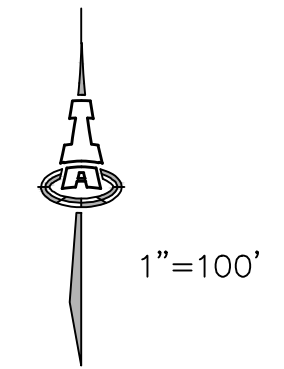


STORMCLOUD UNITS 4 & 5  
DRB #1005029

SKETCH PLAT

7/12/16



NOTES:

1. BULK LAND PLAT WOULD CREATE TRACTS A-D. MIREHAVEN ARROYO IMPROVEMENTS WOULD BE TIED TO THE TRACT THAT DEVELOPS FIRST.
2. UNIT 5 PRELIMINARY PLAT LAYOUT ON FILE WILL NOT CHANGE. THE FINAL PLAT WILL BE AMENDED TO SHOW NEW LEGAL DESCRIPTION (REPLAT OF TRACT A)
3. UNIT 4 PRELIMINARY PLAT LAYOUT ON FILE WILL BE REVISED SHOWING TWO UNITS--4A & 4B. THERE WILL BE 27 ADDITIONAL LOTS IN THE NEW LAYOUT. THE ROADWAY ALIGNMENTS WILL REMAIN THE SAME. A NEW PRELIMINARY PLAT APPLICATION WILL BE SUBMITTED TO DRB. A STIPULATION THAT UNIT 4A SHALL BE DEVELOPED BEFORE UNIT 5A SHALL BE NOTED ON THE PLAT.