

DRB #1005029



**ISAACSON & AREFMAN, P.A.**  
 Consulting Engineering Associates  
 128 Monroe Street N.E.  
 Albuquerque, New Mexico 87108  
 Ph. 505-268-8828 [www.iacivil.com](http://www.iacivil.com)  
 1821 C-701-PERIM WALL.dwg Aug 11, 2016

**STORMCLOUD  
 UNITS 4A & 4B  
 SUPPLEMENTAL  
 PERIMETER WALL PLAN**

REVISED WALL PATTERN AT TIERRA PINTADA  
 DUE TO SHIFT IN ENTRANCE LOCATION.

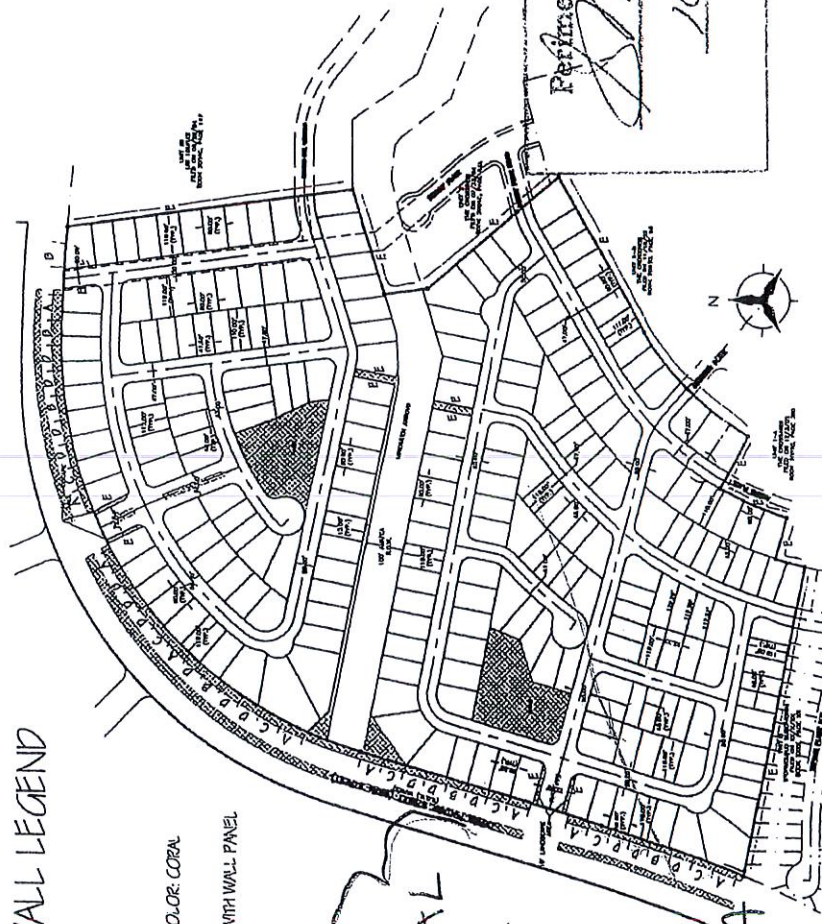
# STORMCLOUD PERIMETER WALL LEGEND

- A STORMCLOUD ACCENT-I PANEL
- B STORMCLOUD ACCENT-II PANEL
- C STORMCLOUD ACCENT-III PANEL
- D STORMCLOUD PLAN WALL PANEL
- E STORMCLOUD GARDEN WALL - SMOOTH CONCRETE BLOCK COLOR CORAL

NOTE: FUTURE PERIMETER WALL LANDSCAPE PLANS WILL COORDINATE WITH WALL PANEL DESIGNS



LANDSCAPE AREAS



Perimeter Wall Approved

*[Signature]*

DEB Chair  
10/11/2016

ADVANTAGE  
 ENGINEERING  
 and CONSULTING, LLC  
10000 W. 10th Ave. Suite 1000, Denver, CO 80202

SEE  
SUPPLEMENTAL  
PERIMETER  
WALL SHEET  
FOR UNIT A  
PERIMETER  
WALL ALONG  
TIERRA PINTADA  
(due to shift in  
entrance location)

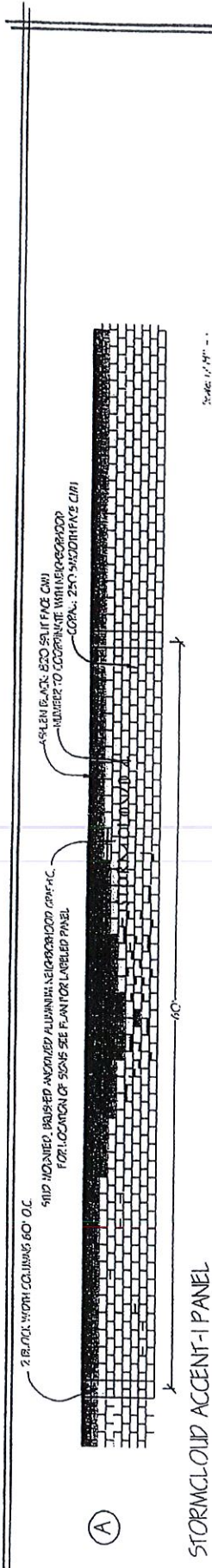
**DRB**  
**1005029**  
 MacIsland Development Co. Inc.

Scale: 1" = 40'  
 Stormcloud 4 & 5  
 ZONE ATLAS PVP'S H.P. - 4-B & J.P.  
 10/11/2016

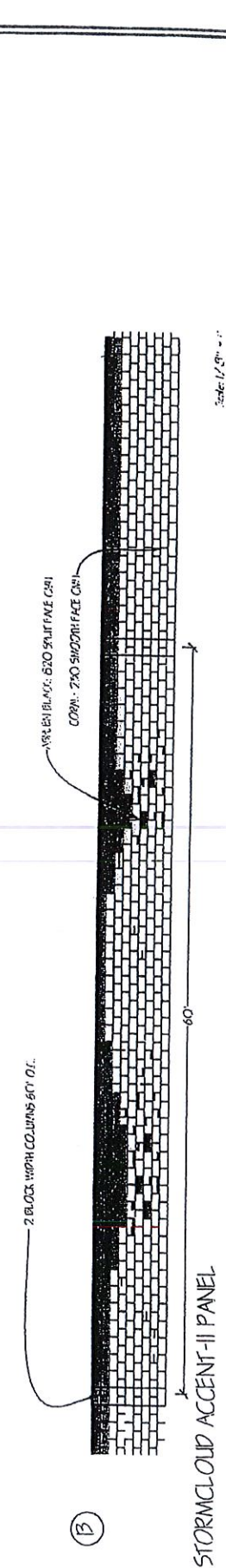
Scale set for Unit A  
 Annex 25, 2005

Approved:

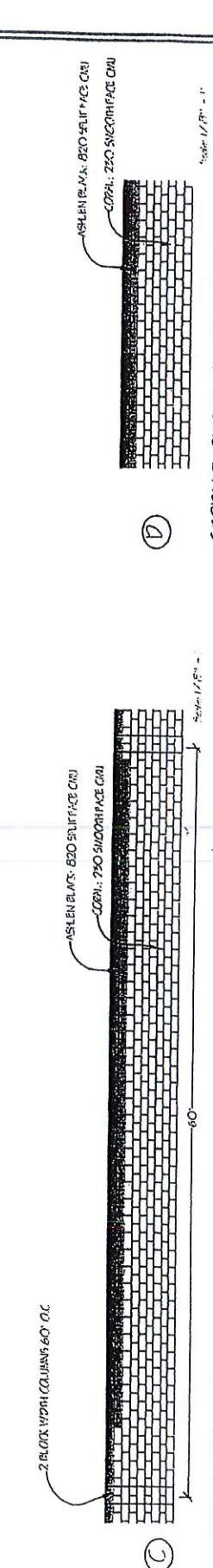




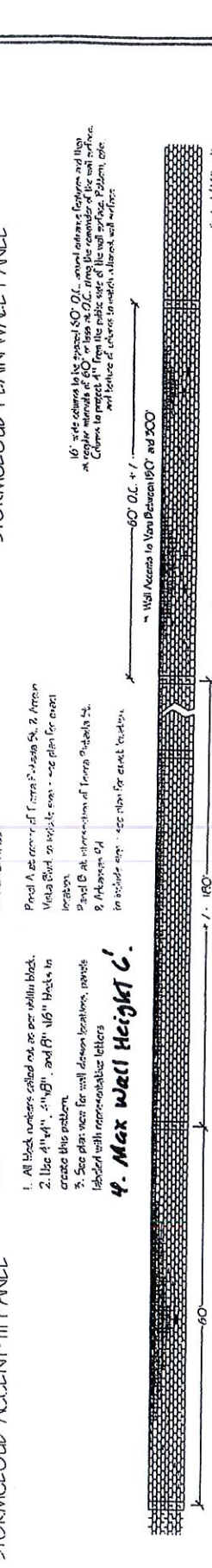
STORMCLOUD ACCENT-I PANEL



STORMCLOUD ACCENT-II PANEL



STORMCLOUD ACCENT-III PANEL



STORMCLOUD PLAIN WALL PANEL

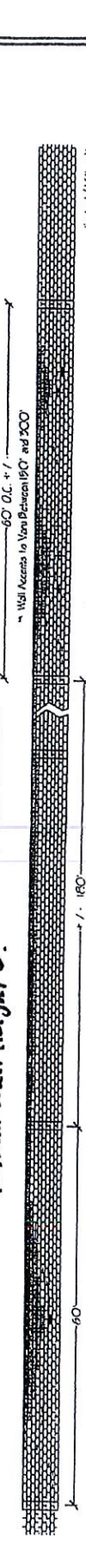
16" wide columns to be spaced 50' O.C. around entrance features and they are regular intervals of 60' or less at O.C. along the remainder of the wall surface. Columns to project 4" from the public side of the wall surface. Pattern, color and texture of colors to match adjacent wall surface.

Additional Notes:

- Panel A at corner of Terra P. Mason Co. 2. Terra P. Mason Co. in visible exp. - see plan for exact location.
- Panel B at intersection of Terra P. Mason Co. 2. Terra P. Mason Co. in visible exp. - see plan for exact location.

- 1. All block numbers called out are per wall in block.
- 2. Use 4 1/4", 5 1/4", and 6 1/4" blocks to create this pattern.
- 3. See plan view for wall design locations, provide labeled with representative letters.

4. Max Wall Height 6'



STORMCLOUD 300' WALL SECTION WITH ENTRANCE AND ACCENT PANELS

Scale set for 11/17  
August 25, 2008

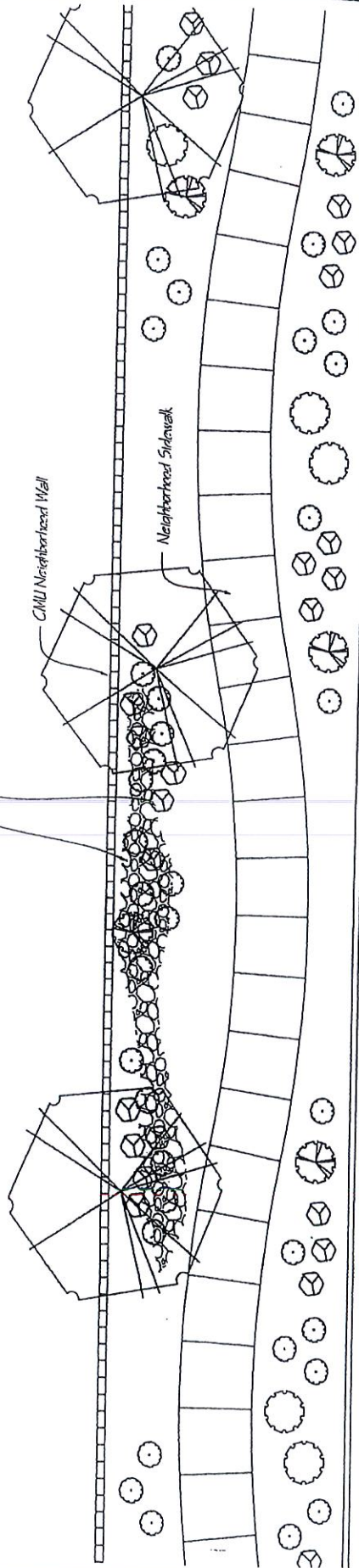
STORMCLOUD 4 & 5

Zone 4 & 5 11/17/08 JPH & LJO



Westland Development Co. Inc.

River rettable swale at stormcloud design features  
Native and/or Low Water Use Plant Materials



**SUGGESTED PLANT LIST**

1. *Panicum Viride* (L), *Grass* (L), *Prickly Pear* (L), *Little Leaf Sumac* (L), *Sumac* (L), *Clematis* (L), *Sumac* (L)
2. *Chloris* (L), *Black of Pines* (L), *Fern* (L), *Orange* (L), *Sonchum* (L), *Sonchum* (L)
3. *Grass* (L), *Black of Pines* (L), *Black of Pines* (L), *Black of Pines* (L), *Black of Pines* (L), *Black of Pines* (L)
4. *Grass* (L), *Black of Pines* (L), *Black of Pines* (L), *Black of Pines* (L), *Black of Pines* (L), *Black of Pines* (L)
5. *Grass* (L), *Black of Pines* (L), *Black of Pines* (L), *Black of Pines* (L), *Black of Pines* (L), *Black of Pines* (L)

Notes:  
- Plant Materials Association will be responsible for irrigation and maintenance.  
- Plant Materials will be located along entire stretch of wall, not just at each  
- A combination of vegetation and wall material types will be used in each  
- Stormcloud design features.

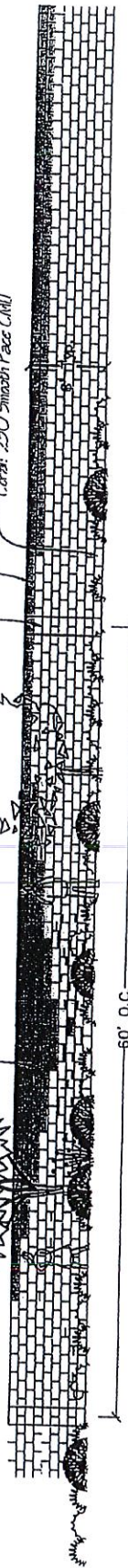
**Wall / Landscape Plan**



16" wide columns to be spaced 60" O.C. around wave design features and then at regular intervals of 60" or less O.C. along the remainder of the wall surface. Columns to project 4" from the public side of the wall surface. Pattern, color, and texture of columns to match adjacent wall surface.

Aetlon Black Split Face CMU  
Local: 250 Smooth Face CMU

Aetlon Black: B20 Split Face CMU



**Wall / Landscape Elevation**

Scale: set for 1/4" = 1'-0"  
August 25, 2008

STORMCLOUD 4 & 5  
2008 AUGUST 25, 2008 08:00

Metalland Development Co. Inc

