

DRB #1005029

ISAACSON & AREFMAN, P.A.
 Consulting Engineering Associates
 128 Monroe Street N.E.
 Albuquerque, New Mexico 87108
 Ph. 505-268-8828 www.iacivil.com
 1821 C-701-PERIM WALL.dwg Aug 11, 2016

**STORMCLOUD
 UNITS 4A & 4B
 SUPPLEMENTAL
 PERIMETER WALL PLAN**

REVISED WALL PATTERN AT TIERRA PINTADA
 DUE TO SHIFT IN ENTRANCE LOCATION.

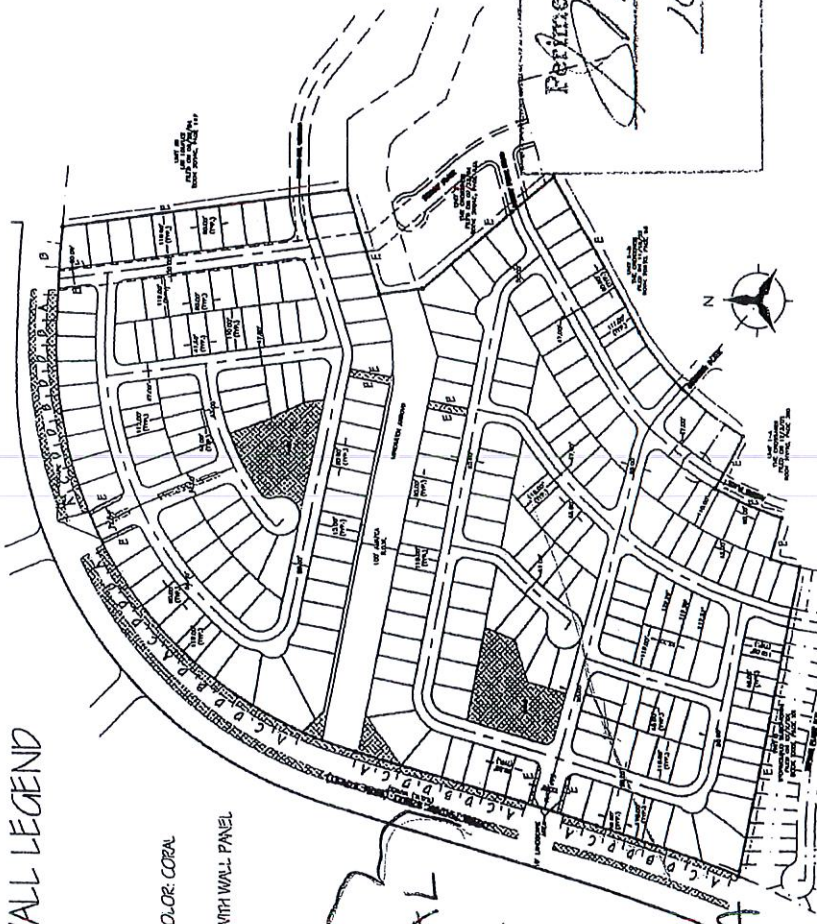
STORMCLOUD PERIMETER WALL LEGEND

- A STORMCLOUD ACCENT-I PANEL
- B STORMCLOUD ACCENT-II PANEL
- C STORMCLOUD ACCENT-III PANEL
- D STORMCLOUD PLAN WALL PANEL
- E STORMCLOUD GARDEN WALL - SMOOTH CONCRETE BLOCK COLOR CORAL

NOTE: FUTURE PERIMETER WALL LANDSCAPE PLANS WILL COORDINATE WITH WALL PANEL DESIGNS



LANDSCAPE AREAS



SEE SUPPLEMENTAL PERIMETER WALL SHEET FOR UNIT A PERIMETER WALL ALONG TIERRA PINTADA (due to shift in entrance location)

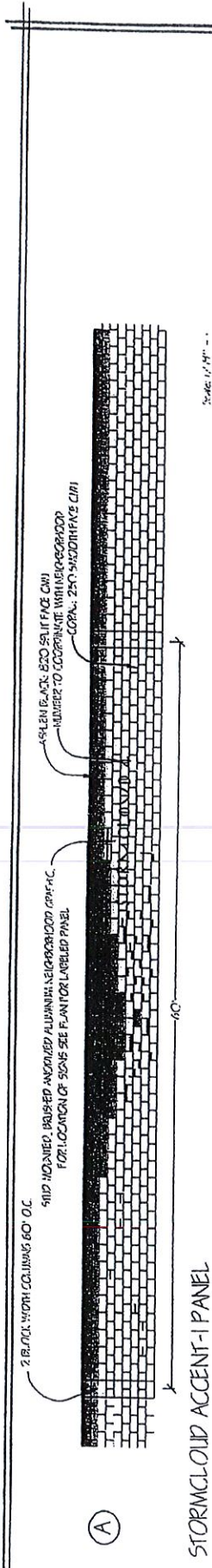
Perimeter Wall Approved
[Signature]
 DRB Chair
 10/11/2016
 ADVANTAGE ENGINEERING and CONSULTING, LLC
 1005029

DRB
 1005029
 MacIsland Development Co. Inc.

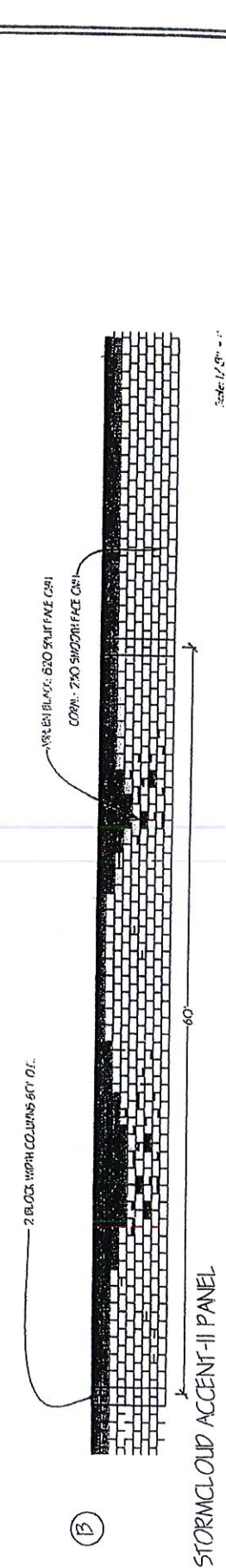
Scale: 1" = 40'
 N
 STORMCLOUD 4 & 5
 ZONE ATLAS PVP'S H.P., J.P. & J.P.
 10/11/2016

Scale set for UNIT
 Annex 25, 2005

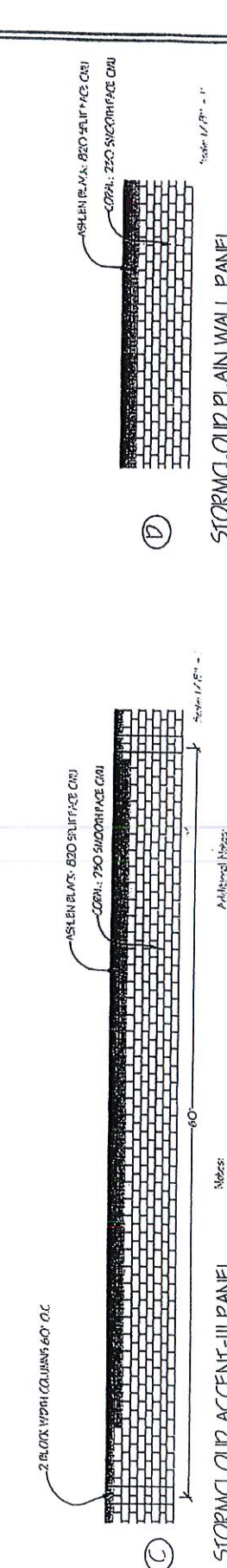
Approved:



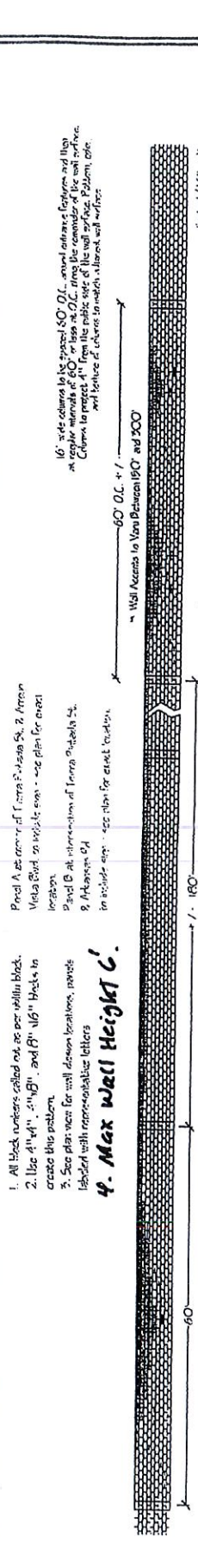
STORMCLOUD ACCENT-I PANEL



STORMCLOUD ACCENT-II PANEL



STORMCLOUD ACCENT-III PANEL



STORMCLOUD PLAIN WALL PANEL

Notes:

1. All block numbers called out are per Walling block.
2. Use 4 1/4", 5 1/4", and 6 1/4" blocks to create this pattern.
3. See plan view for wall design locations, provide labeled with representative letters

4. Max Wall Height 6'

Additional Notes:

- Panel A at corner of Terra P. Mason Co. 2. Terra P. Mason Co. on visible exp. - see plan for exact location.
- Panel B at intersection of Terra P. Mason Co. & Arkansas St. in include exp. - see plan for exact location.

16" wide columns to be spaced 60' O.C. around entrance features and they are regular intervals of 60' or less at O.C. along the remainder of the wall surface. Columns to project 4" from the public side of the wall surface. Pattern, color and texture of colors to match adjacent wall surface.

