

96c 302

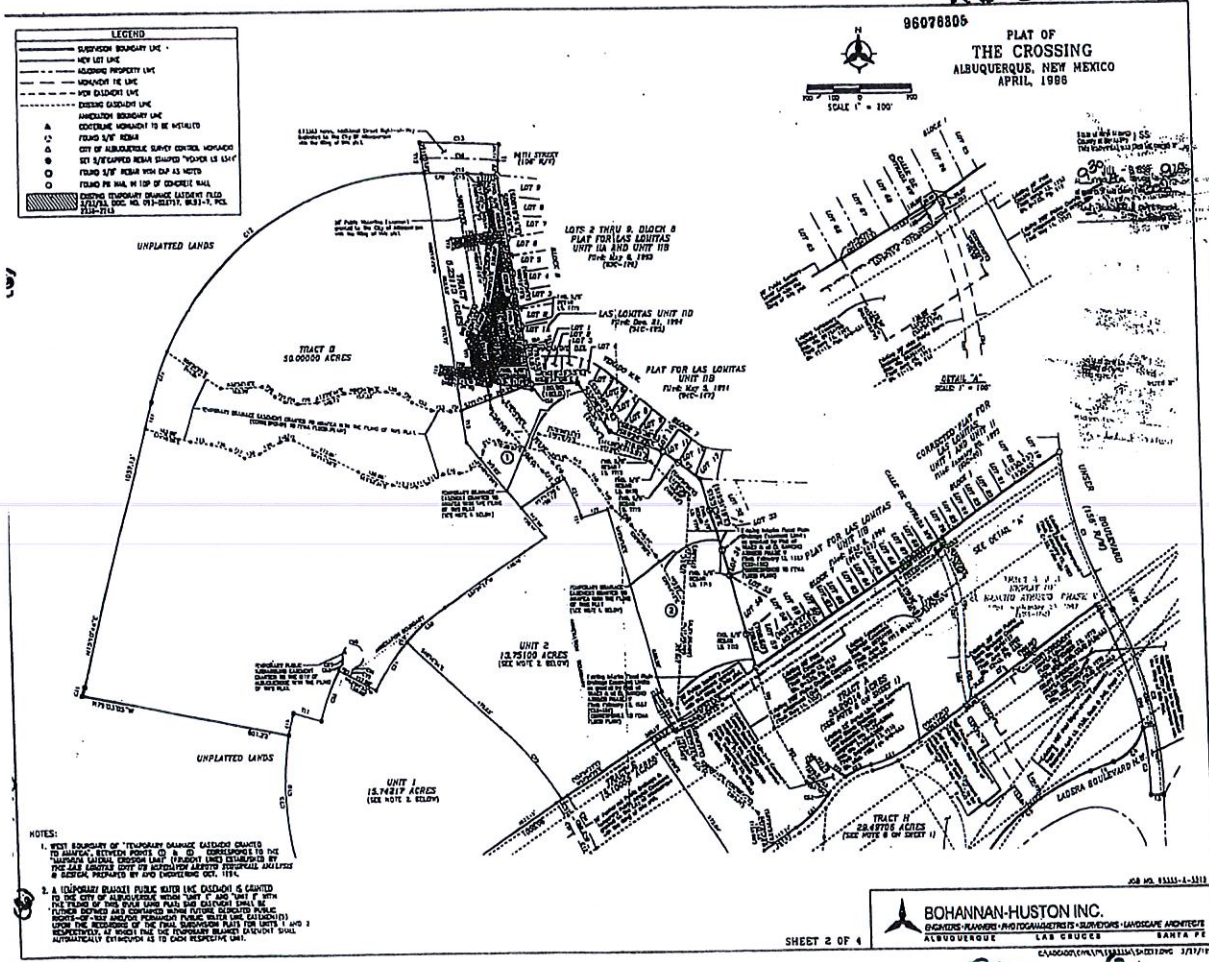
96078805

**PLAT OF  
THE CROSSING**  
ALBUQUERQUE, NEW MEXICO  
APRIL, 1988



**LEGEND**

-----	SUBDIVISION BOUNDARY LINE
-----	KEY LOT LINE
-----	ADJOINING PROPERTY LINE
-----	MONUMENT BY LINE
-----	POW. ELEMENT LINE
-----	EXISTING GROUNDWATER LINE
-----	INCLINATION BOUNDARY LINE
-----	COVERLINE MONUMENT TO BE INSTALLED
-----	FOUND 1/4" NEAR
-----	OUT OF ALIBERTS BOUNDARY CONTROL MONUMENT
-----	SET 1/4" REAR NEAR SHEDS
-----	FOUND 1/4" NEAR WEA DAM AS MON
-----	FOUND 1/4" NEAR WEA DAM AS MON
-----	EXISTING GROUNDWATER MONUMENT (AUGUST 1988)
-----	(1) (2) (3) (4) (5) (6) (7) (8) (9) (10) (11) (12) (13) (14) (15) (16) (17) (18) (19) (20) (21) (22) (23) (24) (25) (26) (27) (28) (29) (30) (31) (32) (33) (34) (35) (36) (37) (38) (39) (40) (41) (42) (43) (44) (45) (46) (47) (48) (49) (50) (51) (52) (53) (54) (55) (56) (57) (58) (59) (60) (61) (62) (63) (64) (65) (66) (67) (68) (69) (70) (71) (72) (73) (74) (75) (76) (77) (78) (79) (80) (81) (82) (83) (84) (85) (86) (87) (88) (89) (90) (91) (92) (93) (94) (95) (96) (97) (98) (99) (100)



**NOTES:**

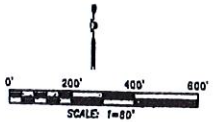
1. WEST BOUNDARY OF "TEMPORARY DAMAGE OUTSIDE CURB" TO BE ADJUSTED BETWEEN POINTS (1) & (2) ESTABLISHED TO THE "TEMPORARY DAMAGE OUTSIDE CURB" (TRADITION UNIT) ESTABLISHED BY THE SALE AGREEMENT TO BE CONSIDERED AFFECTED TEMPORAL ANALYSIS & SURVEY PREPARED BY A/D (NOVEMBER OCT. 1984).

2. A TEMPORARY DAMAGE PUBLIC WATER LINE (DASHED) IS SHOWN TO THE CITY OF ALBUQUERQUE, WATER TRACT (1) AND (2) 1984. THESE BOUNDARIES AND CORNERS SHALL BE CONSIDERED PUBLIC BOUNDARIES OF RECORD FOR THE PUBLIC WATER LINE (DASHED) UNDER THE REQUIREMENTS OF THE FINAL SUBDIVISION PLAT FOR UNITS 1 AND 2 RESPECTIVELY, IN WHICH THE TEMPORARY DAMAGE (DASHED) SHALL AUTOMATICALLY EXTEND AS TO EACH RESPECTIVE UNIT.

BOHANNAN-HUSTON INC.  
 ENGINEERS-PLANNERS-PHOTOGRAMMETRISTS-SURVEYORS-LANDSCAPE ARCHITECTS  
 ALBUQUERQUE LAS CRUCES SANTA FE  
 SHEET 2 OF 4

JOB NO. 85333-A-3311

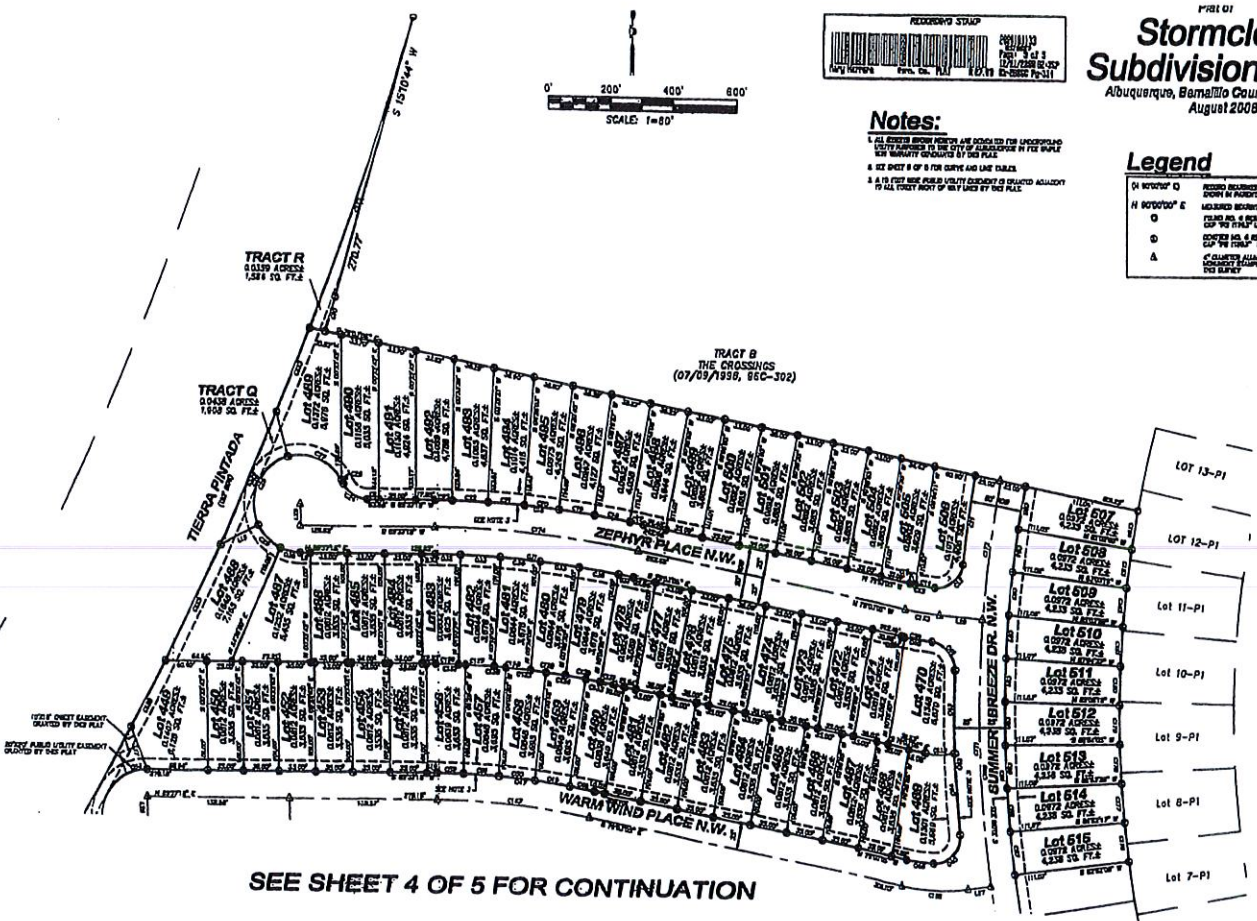
178101  
**Stormcloud  
 Subdivision Unit 3**  
 Albuquerque, Bernalillo County, New Mexico  
 August 2008



**Notes:**  
 1. ALL EASEMENTS SHOWN HEREIN ARE GRANTED FOR UNDERGROUND UTILITY PURPOSES TO THE CITY OF ALBUQUERQUE IN THE SCALE AND QUANTITY INDICATED BY THE PLAN.  
 2. SEE SHEET 4 OF 5 FOR CURVE AND LINE DATA.  
 3. A TO THE WEST SIDE OF THE UTILITY EASEMENT IS RESERVED FOR THE CITY OF ALBUQUERQUE TO BE USED BY THE CITY.

**Legend**

(H) INTERIOR	RESERVED EASEMENTS AND RESERVED RIGHTS IN UNDERGROUNDS
(H) INTERIOR	RESERVED EASEMENTS AND RESERVED RIGHTS IN UNDERGROUNDS
(O)	PLANS AND A RECORD WITH YELLOW PLATES FOR THE TRAFFIC SIGNALS (CONCRETE SIGNAL)
(C)	CONCRETE SIG. & SIGNAL IN YELLOW PLATE FOR THE TRAFFIC SIGNALS (CONCRETE SIGNAL)
(A)	CONCRETE SIGNALS IN YELLOW PLATE FOR THE TRAFFIC SIGNALS (CONCRETE SIGNAL)



SEE SHEET 4 OF 5 FOR CONTINUATION

**PRECISION SURVEYS, INC.**  
 8500-A Jefferson Street, NE  
 Albuquerque, NM 87113

INCLUDED IS THE RIGHT TO BUILD, REBUILD, CONSTRUCT, RECONSTRUCT, LOCATE, RELOCATE, MAINTAIN, REPAIR, MODIFY, REPAIR, UPDATE, AND MAINTAIN FACILITIES FOR THE PURPOSES DESCRIBED ABOVE, TOGETHER WITH

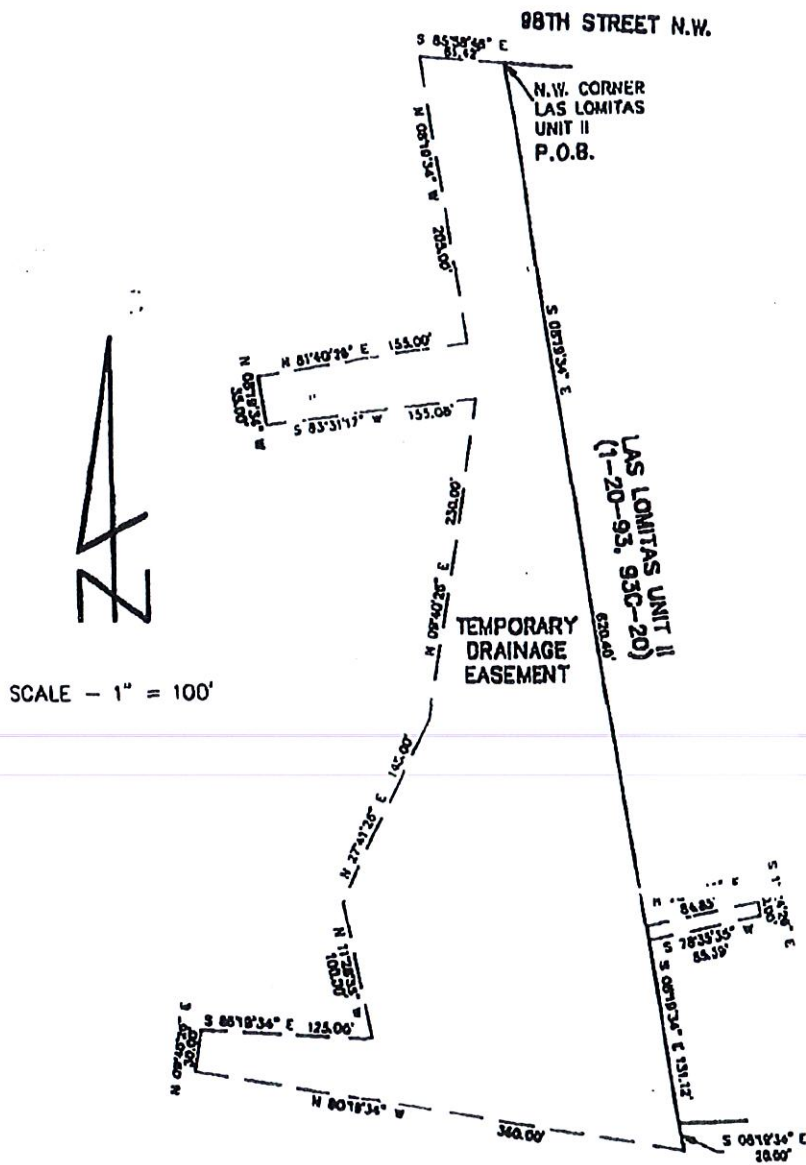
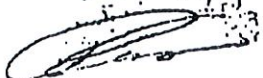
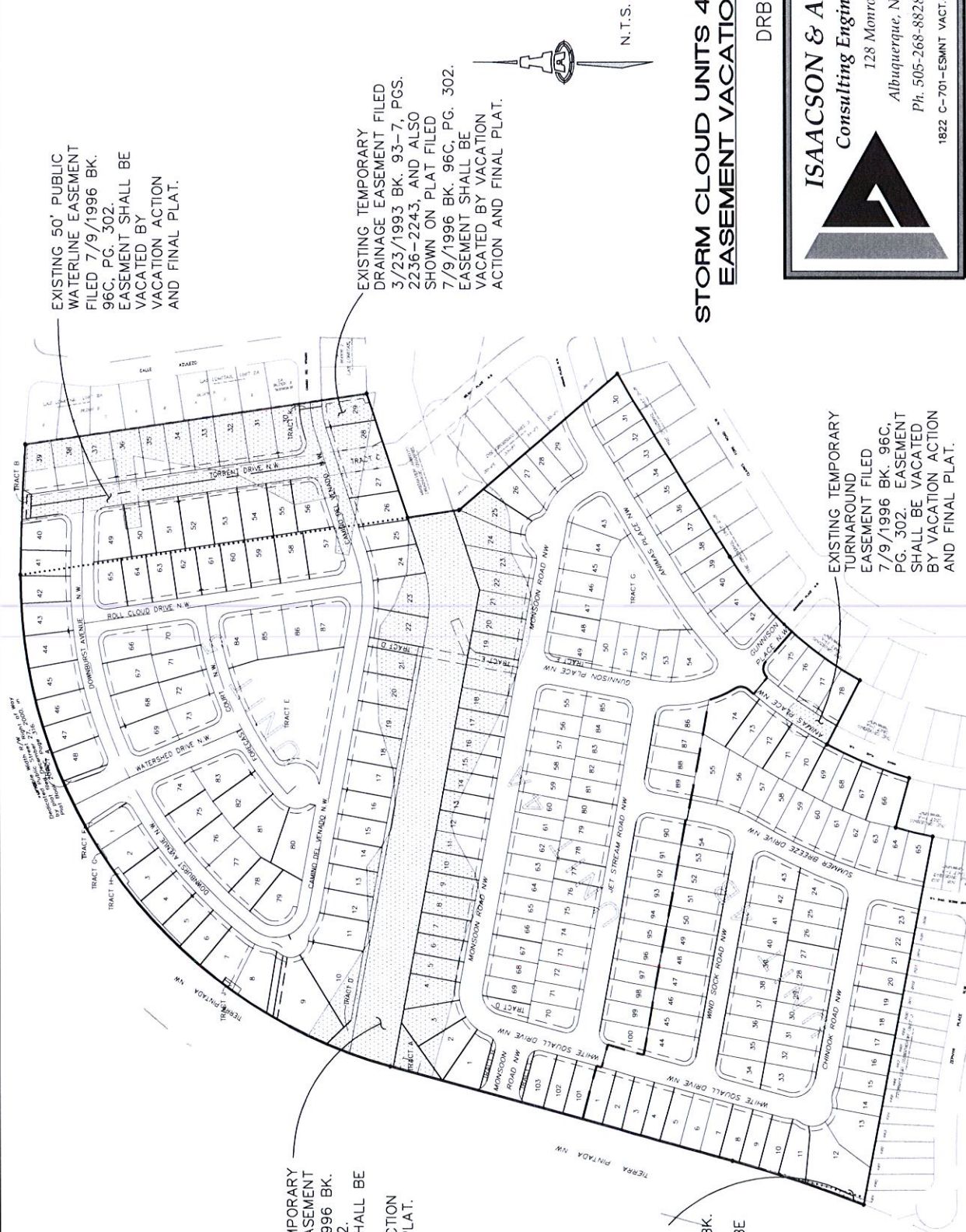


EXHIBIT B

0002243

Land situated within projected Section 9, Township 10 North, Range 2 East, New Mexico Principal Meridian, within the Town of Atrisco Grant, City of Albuquerque, Bernalillo County, New Mexico, being within unplatted Lands of Westland Development Company, Inc. and Las Lomitas Unit II as the same is shown and designated on said plat filed for record in the office of the County Clerk of Bernalillo County, New Mexico on January 20, 1993 in Volume 93C, Folio 20.

EXHIBIT C  
SEAL OF BERNALILLO COUNTY  
53 MAR 23 1110: 19  
93-7 2236-2243  




EXISTING 50' PUBLIC WATERLINE EASEMENT FILED 7/9/1996 BK. 96C, PG. 302. EASEMENT SHALL BE VACATED BY VACATION ACTION AND FINAL PLAT.

EXISTING TEMPORARY DRAINAGE EASEMENT FILED 7/9/1996 BK. 96C, PG. 302. EASEMENT SHALL BE VACATED BY VACATION ACTION AND FINAL PLAT.

EXISTING TEMPORARY DRAINAGE EASEMENT FILED 3/23/1993 BK. 93-7, PGS. 2236-2243, AND ALSO SHOWN ON PLAT FILED 7/9/1996 BK. 96C, PG. 302. EASEMENT SHALL BE VACATED BY VACATION ACTION AND FINAL PLAT.

N.T.S.

EXISTING PUBLIC UTILITY EASEMENT FILED 8/19/2004 BK. 2004C, PG. 250. EASEMENT SHALL BE VACATED BY VACATION ACTION AND FINAL PLAT.

EXISTING TEMPORARY TURNAROUND EASEMENT FILED 7/9/1996 BK. 96C, PG. 302. EASEMENT SHALL BE VACATED BY VACATION ACTION AND FINAL PLAT.

**STORM CLOUD UNITS 4A, 4B AND 5 EASEMENT VACATION EXHIBIT**

DRB #1005029

**ISAACSON & ARFMAN, P.A.**  
 Consulting Engineering Associates  
 128 Monroe Street N.E.  
 Albuquerque, New Mexico 87108  
 Ph. 505-268-8828 [www.iactril.com](http://www.iactril.com)  
 1822 C-701-ESMNT VACT.dwg Aug 10, 2016