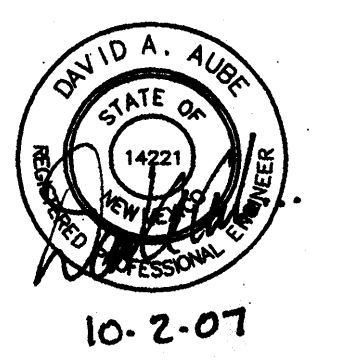




THE HARTMAN + MAJEWSKI DESIGN GROUP

Architects Engineers Interior Design
Planners Urban designers LEEDS
202 Central Avenue SE, Suite 200
Albuquerque, New Mexico 87102
Tel 505.242.6880 - Fax 505.242.6881
www.designgroupnm.com



Consultant
Address
Address
Phone
Fax
e-mail

Bernitsky Eye Facility
6401 Holly Ave. NE
Albuquerque, NM 87113

SPBP
PRELIMINARY PLAT
APPROVED BY DRB
ON 10/17/09

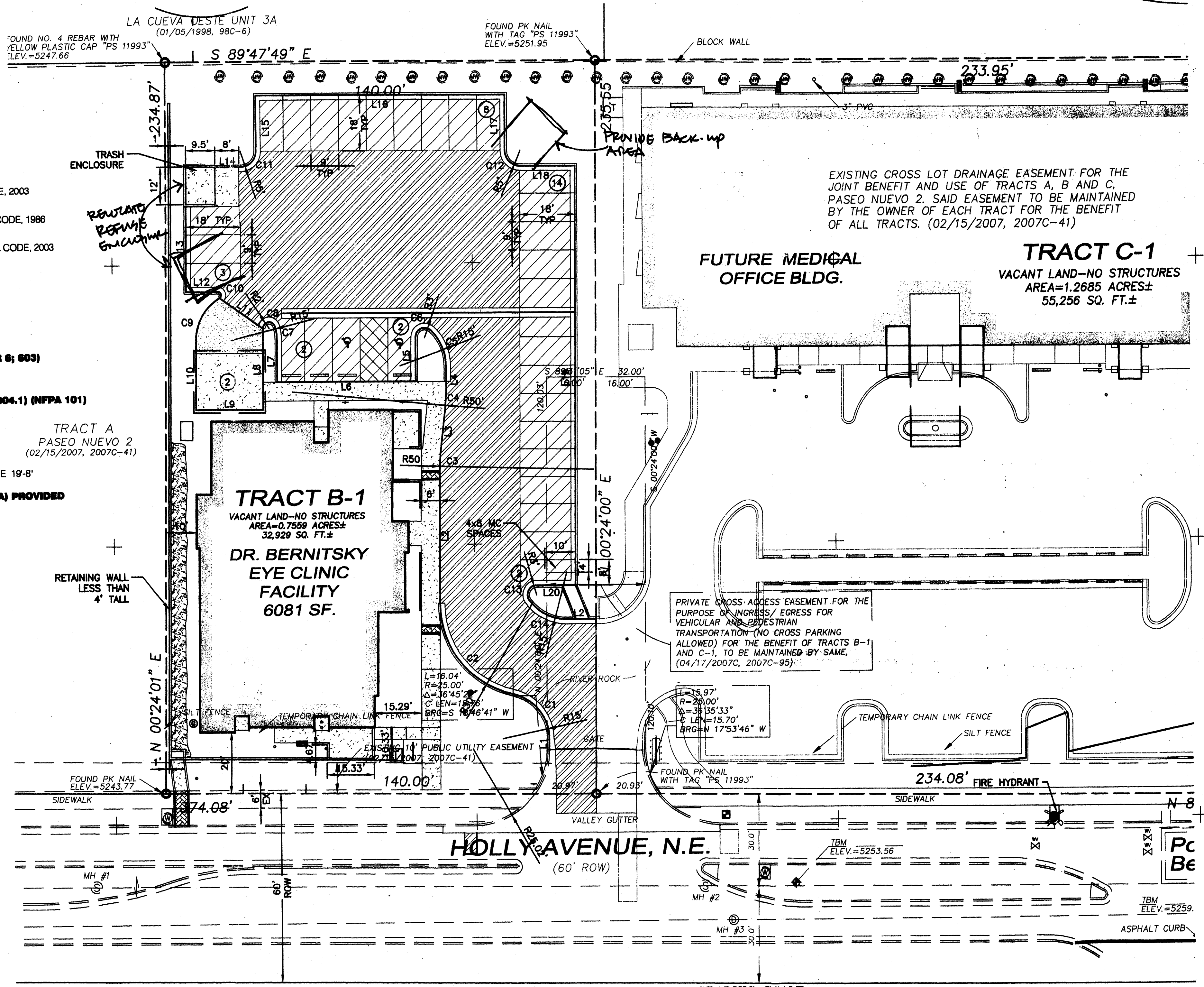
David Bernitsky, M.D.

No.	Description	Date

SITE DEVELOPMENT PLAN FOR BUILDING PERMIT

Project number: 2335
Date: 9-20-2007
Drawn by: DAA
Checked by: DAA

C101



- I. APPLICABLE CODES AND REGULATIONS**
 - A. NEW MEXICO COMMERCIAL BUILDING CODE, 2003
 - B. INTERNATIONAL BUILDING CODE, 2003
 - C. INTERNATIONAL ENERGY CONSERVATION CODE, 1986
 - D. ICC/ANSI A117.1 - 2003
 - E. NEW MEXICO PLUMBING AND MECHANICAL CODE, 2003
 - F. UNIFORM MECHANICAL CODE, 2003
 - G. UNIFORM PLUMBING CODE, 2003
 - H. NEW MEXICO ELECTRICAL CODE, 2002
 - I. NATIONAL ELECTRICAL CODE, 2002
 - J. NATIONAL ELECTRICAL SAFETY CODE, 2002
 - K. LIFE SAFETY CODE / NFPA 101, 2000
- II. TYPE OF CONSTRUCTION (IBC CHAPTER 6; 603)**

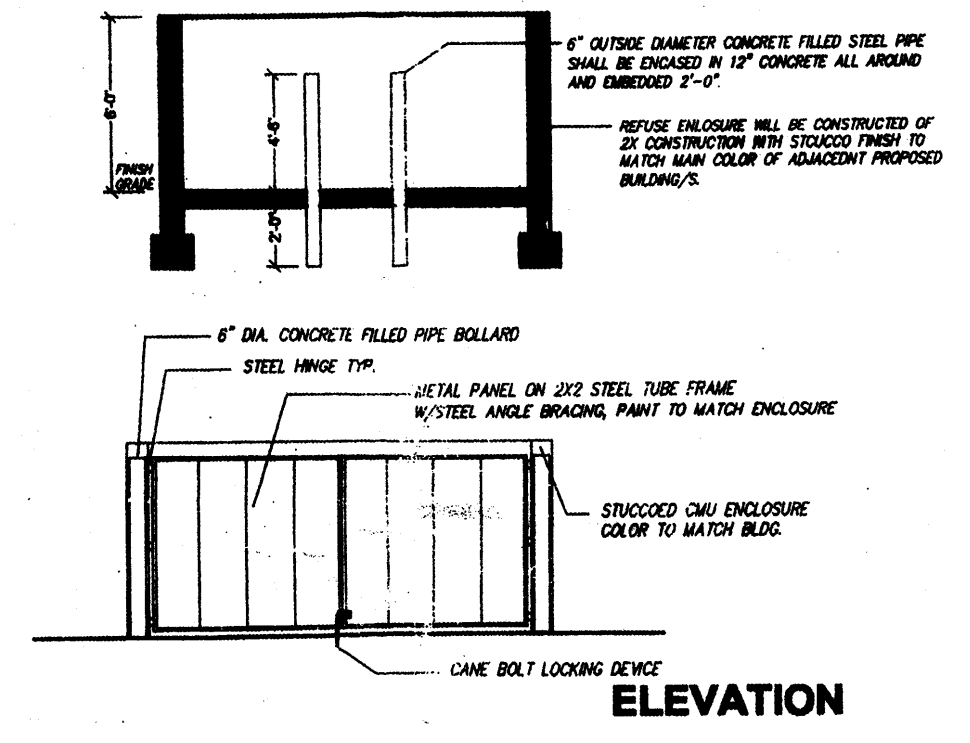
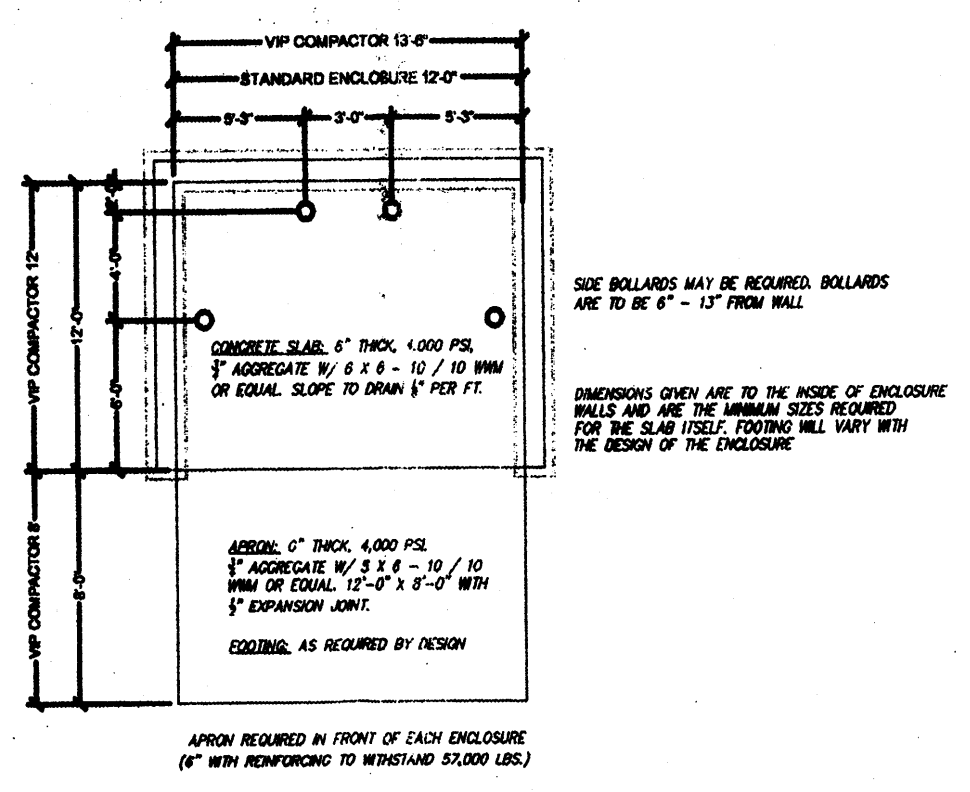
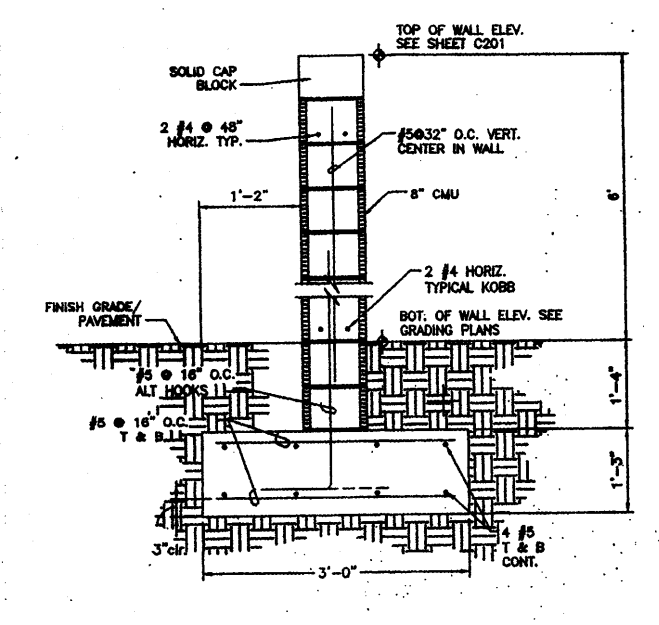
TYPE V-B
- III. OCCUPANCY GROUP (IBC CHAPTER 3; 304.1) (NFPA 101)**

GROUP B - BUSINESS
- IV. NUMBER OF STORIES / SIZE**

ONE (1) STORY
HIGHEST STRUCTURAL ELEMENT ABOVE GRADE 19'-8"
- V. TOTAL AREA (IBC 502.1, BUILDING AREA) PROVIDED**

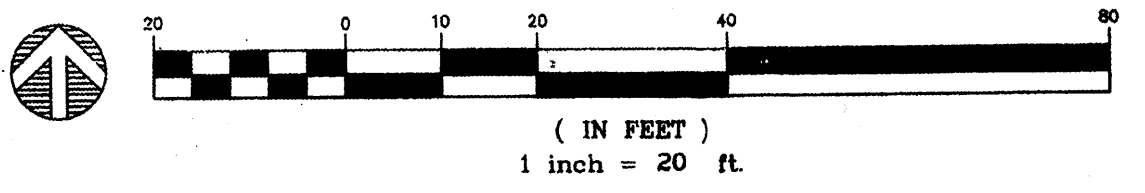
6,081 SQUARE FOOT BUILDING
+ 691 SQUARE FOOT CANOPIES
6,772 SQUARE FEET TOTAL
- VI. FIRE PROTECTION**

FULLY SPRINKLERED
SMOKE DETECTION
FIRE ALARM AND COMMUNICATION SYSTEM
RM #109, #112 NON-SPRINKLED EXEMPTION



A1 SITE DEVELOPMENT PLAN FOR SUBDIVISION

SCALE: 1" = 20'-0"



LEGEND

- NEW ASPHALT PAVING
- NEW ASPHALT DRIVE LANES
- NEW SIDEWALK
- NEW LIGHT POLE 24' TALL

CURVE	LENGTH	RADIUS	TANGENT	DELTA
C1	20.33	15.00	12.07	77.39°24"
C2	40.61	30.00	24.10	77.33°06"
C3	5.30	50.00	2.65	6°04°08"
C4	5.20	50.00	2.60	5°57°50"
C5	12.62	15.00	6.71	48°11°23"
C6	6.90	3.00	6.71	131°48°37"
C7	4.33	15.00	2.18	16°32°41"
C8	5.71	2.00	13.76	163°27°18"
C9	15.98	15.00	8.84	61°02°42"
C10	2.64	1.00	3.67	151°02°42"
C11	7.84	5.00	4.98	89°48°10"
C12	7.84	5.00	4.98	89°48°10"
C13	6.61	3.00	5.93	126°19°38"
C14	14.10	15.00	7.62	53°52°11"

LINE	LENGTH	BEARING
L1	3.85	N00°24'00"E
L2	43.03	S02°17'42"W
L3	14.86	S06°21'50"W
L4	8.34	S00°24'00"W
L5	13.93	S00°24'00"W
L6	45.00	S89°47'49"E
L7	13.20	S00°24'00"W
L8	25.84	S02°21'11"E
L9	22.00	N89°35'59"W
L10	22.14	S00°24'01"W
L11	17.09	S89°08'47"E
L12	10.47	N89°35'59"W
L13	27.03	N00°24'01"E
L14	8.50	S89°47'49"E
L15	18.00	N00°21'11"E
L16	81.00	S89°47'49"E
L17	18.00	S00°12'11"W
L18	17.75	S89°36'00"E
L19	134.00	S00°24'01"W
L20	12.67	S89°36'00"E
L21	9.57	S89°47'49"E

PROJECT NUMBER: 1005132
APPLICATION NUMBER: 07DRB-70305

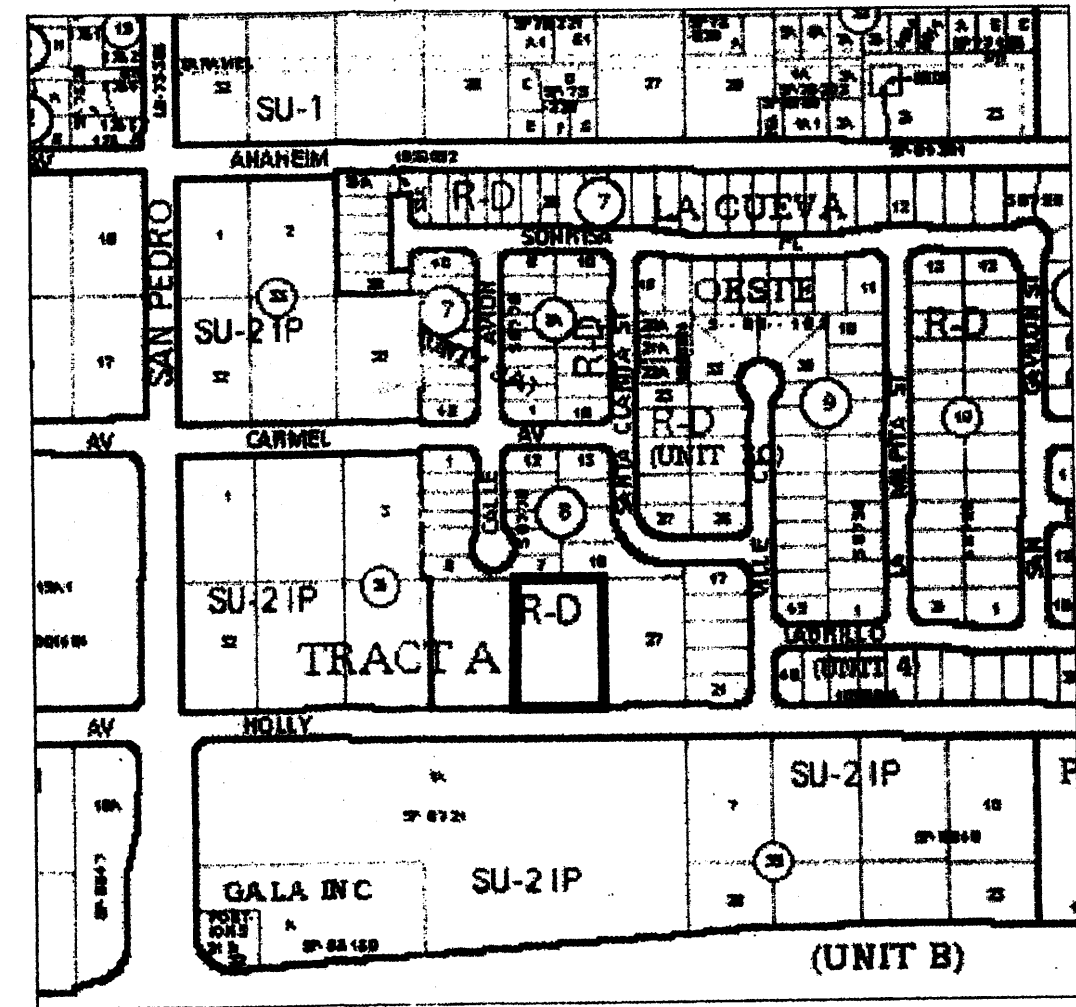
This plan is consistent with the specific site development plan approved by the Environmental Planning Commission (EPC) on [] and the findings and conditions in the Official Notification of Decision are satisfied.

Is an Infrastructure List required? () YES () NO If yes, then a set of approved DRB plans with a work order is required for any construction within Public Right-of-Way or for construction of public improvements.

DRB SITE DEVELOPMENT PLAN SIGNOFF-APPROVAL

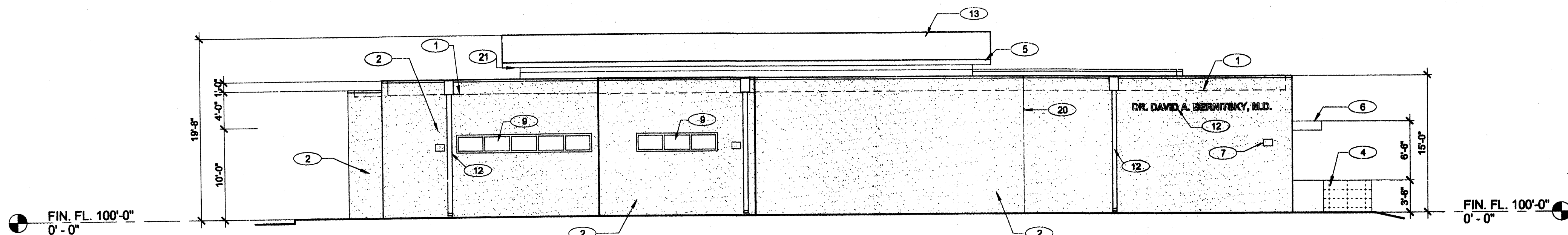
Signature	Date
[Signature]	4/17/08
[Signature]	10/17/07
[Signature]	10/17/07
[Signature]	10/17/07
[Signature]	4/17/08
[Signature]	4/17/08
[Signature]	4/21/08

* Environmental Health, if necessary

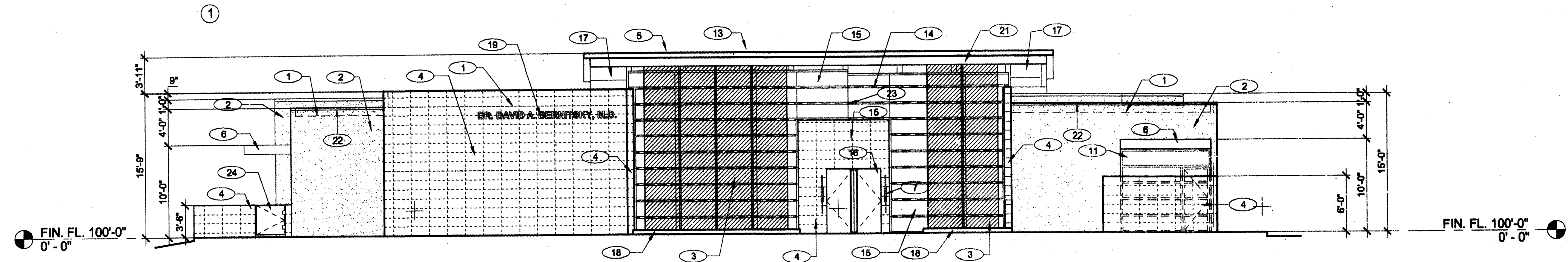


B6 VICINITY MAP
SCALE: NOT TO SCALE C-18

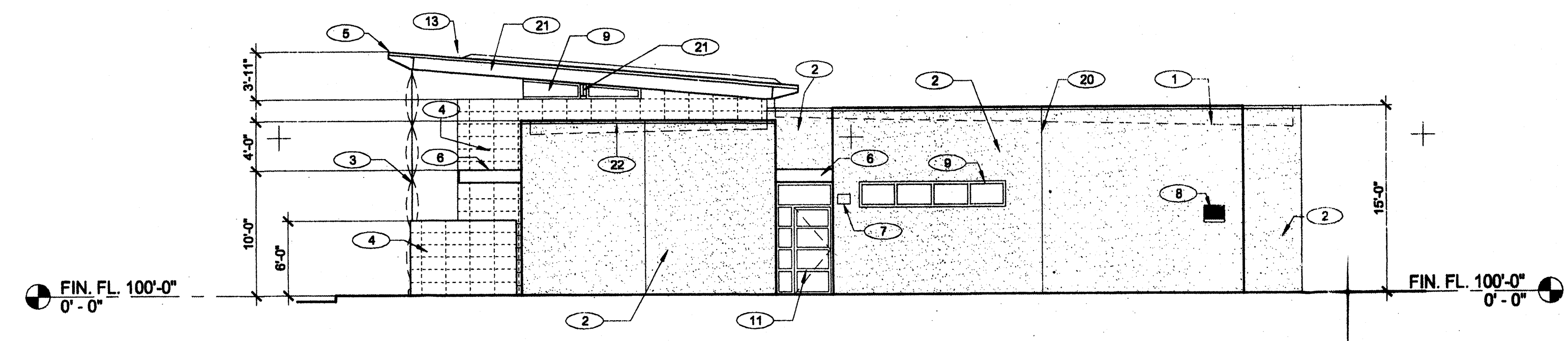
1005132



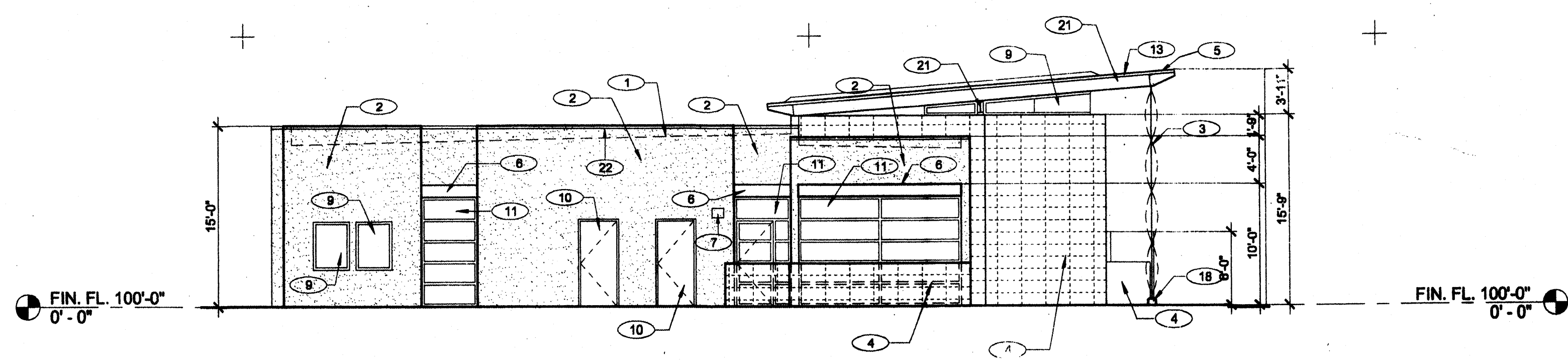
West Elevation
1/8" = 1'-0"



East Elevation
1/8" = 1'-0"



North Elevation
1/8" = 1'-0"



South Elevation
1/8" = 1'-0"

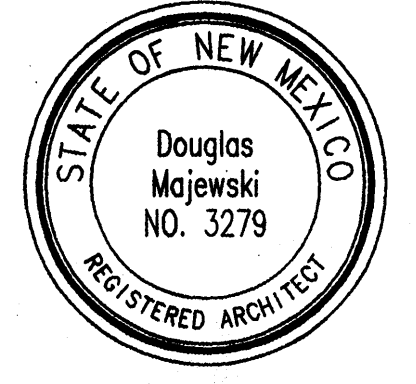
KEYED NOTES

- 1 LINE OF ROOF BEHIND PARAPET
- 2 EIFS FINISH SYSTEM
- 3 CURVED METAL ARCHITECTURAL SCREEN
- 4 STONE VENEER
- 5 ALUMINUM FLASHING
- 6 STEEL FRAME CANOPY
- 7 EXTERIOR SURFACE MOUNTED FIXTURE
- 8 AIR VENT LOUVER
- 9 WINDOW AND FRAME AS SCHEDULED
- 10 DOORS AND FRAMES AS SCHEDULED
- 11 METAL-FRAMED STOREFRONT
- 12 SCUPPER AND DOWNSPOUT
- 13 MEMBRANE ROOF
- 14 18" METAL SUNSHADE
- 15 METAL FRAME CURTAINWALL SYSTEM
- 16 FRAMELESS GLASS ENTRY DOOR
- 17 EXPOSED METAL DECK
- 18 CONCRETE SLAB - SEE STRUCTURAL
- 19 BUILDING MOUNTED SIGN (O.F.C.I.)
- 20 EXPANSION JOINT
- 21 BEAM - SEE STRUCTURAL
- 22 METAL CAP
- 23 CHANGE IN WALL PLANE
- 24 METAL GATE



**THE HARTMAN + MAJEWSKI
DESIGN GROUP**

Architects Engineers Interior Design
Planners Urban designers LEED
202 Central Avenue SE, Suite 200
Albuquerque, New Mexico 87102
Tel 505.242.6880 - Fax 505.442.6881
www.designgroupnm.com



Bernitsky Eye Facility

6401 Holly Ave. NE
Albuquerque, NM 87113

David Bernitsky, M.D.

No.	Description	Date

EXTERIOR ELEVATIONS

Project number	2335
Date	9-20-07
Drawn by	RGM
Checked by	RAT

A200