

COORS BOULEVARD, N.W.
(156' R.O.W.)

NOT A PART
TRACT A
WESTWOOD RANCH
(06/06/1996, 96C-247)

PAD-B
PROPOSED
SHOPS-1
20,000 SF
LAND AREA
86,539 SF
F.A.R. .23

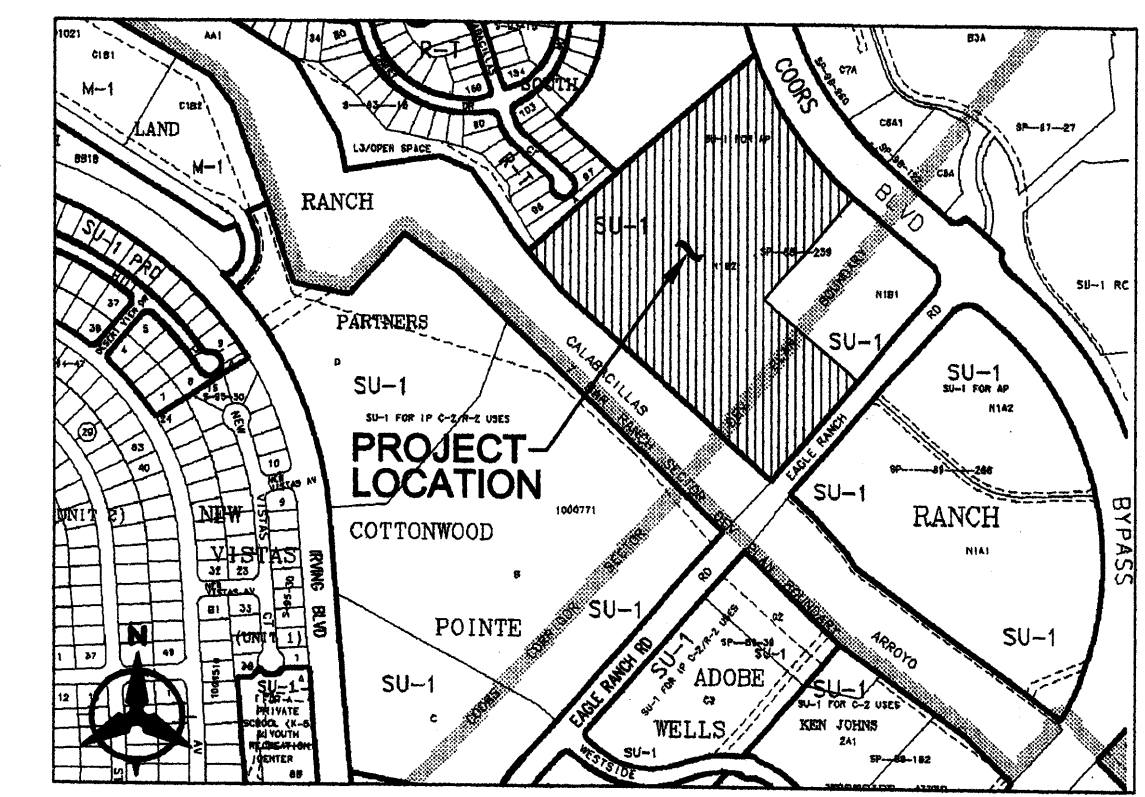
PROPOSED
SHOPS-7
8,800 SF
LAND AREA
39,820 SF
F.A.R. .21

NOT A PART
TRACT N-1B-1
SEVEN-BAR RANCH
(08/12/88, C37-35)

PROPOSED
COSTCO WHOLESALE
160,000 SF
LAND AREA
615,161 SF

TRACT N-1-B-2

ARROYO DE LAS CALABACILLAS
SUMMARY PLAT SEVEN-BAR RANCH
(FOR ANNEXATION)
(6/8/81, C18-96)



PROJECT NUMBER: 1005133
APPLICATION NUMBER: 27DRB-00487

This plan is consistent with the specific site development plan approved by the Environmental Planning Commission (EPC) on the findings and conditions in the Official Notification of Decision on whether to issue a final site plan for the construction of public improvements.

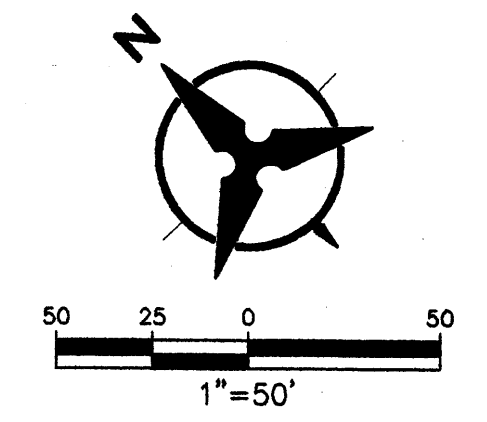
DRB SITE DEVELOPMENT PLAN SUBJECT APPROVAL

City Engineer	4-25-07
City Planner	4-25-07
City Clerk	4-25-07
City Manager	4-25-07
City Council	4-25-07
City Commission	4-25-07
City Board	4-25-07
City Department	4-25-07
City Office	4-25-07

* Environmental Health, if necessary

LEGAL DESCRIPTION	SITE DATA TABLE		
	TRACT N-1-B-2	PAD B(SHOPS-1)	PAD C(SHOPS-2)
TOTAL ACRES:	14.1221 AC	1.9866 AC	.6409 AC
EXISTING ZONING:	SU-1 FOR AUTO PARK		
PROPOSED ZONING:	SU-1 FOR C-2 PERMISSIVE USES TO INCLUDE A COSTCO RETAIL WAREHOUSE		
BUILDING SIZE:	160,000 SF	20,000 SF	6,800 SF
FAR:	.26	.23	.21
PROPOSED USE:	RETAIL WAREHOUSE	RETAIL SHOPS	RETAIL SHOPS/W DRIVE THRU
TOTAL PARKING PROVIDED:	624 SPACES	105 SPACES (11 SMALL CARS)	33 SPACES (1 MOTOR CYCLE)
TOTAL PARKING REQ (INCLUDING EMPLOYEE):	588 SPACES re: detailed calc below	100 SPACES (1 car per 200sf)	33 SPACES (1 car per 200sf)
H.C PROVIDED:	16 H.C (INCLUDING 2 VAN ACCES.)	4 H.C (INCLUDING 2 VAN ACCESSIBLE)	4 H.C (INCLUDING 2 VAN ACCESSIBLE)
H.C REQUIRED:	16 H.C SPACES	3 H.C SPACES	3 H.C SPACES
BIKE SPACES PROVIDED:	45 BIKE SPACES	5 BIKE SPACES	2 BIKE SPACES
BIKE SPACES REQUIRED:	45 BIKE SPACES	5 BIKE SPACES	2 BIKE SPACES
SHOWER SPACES PROVIDED:	NOT REQUIRED	NOT REQUIRED	NOT REQUIRED
SHOWER SPACES REQUIRED:	NOT REQUIRED	NOT REQUIRED	NOT REQUIRED
MAX BUILDING HT	40'	37'	32'

1 SITE DATA TABLE
Scale: N.T.S.
COSTCO DETAILED PARKING CALC
0-15,000 SF RETAIL AREA= 75 CARS
15,000-60,000 SF RETAIL AREA= 180 CARS
60,000-100,000 SF RETAIL AREA= 333 CARS
TOTAL REQUIRED CARS(COSTCO PARCEL) = 588



Galabacillas Court, N.W.
(50' R.O.W.)

NOT A PART
THE TRAILS AT SEVEN-BAR SOUTH
PHASE II SEVEN-BAR RANCH
(9/13/94, 94C-305)

NOT A PART
TRACT "A"
(08/12/88, C37-35)

EAGLE RANCH RD
(86' R.O.W.)

NOT A PART
TRACT N-1A-1
SEVEN-BAR RANCH
(11/01/89, C40-34)

Bohannon & Huston
Court yard | 7500 Jefferson St. NE Albuquerque, NM 87109-4335
ENGINEERING • SPATIAL DATA • ADVANCED TECHNOLOGIES

COSTCO WHOLESALE
ALBUQUERQUE III

SWC OF COORS BLVD BYPASS
AND EAGLE RANCH RD

COSTCO WHOLESALE CORPORATION
999 LAKE DRIVE
ISSAQUAH, WA 98027
T: 425.313.8100
www.costco.com

MULVANNY G2

1110 112TH AVE. NE | SUITE 500
BELLEVUE, WA | 98004
t 425.463.2000 | f 425.463.2002

MulvannyG2.com

DRB SUBMITTAL

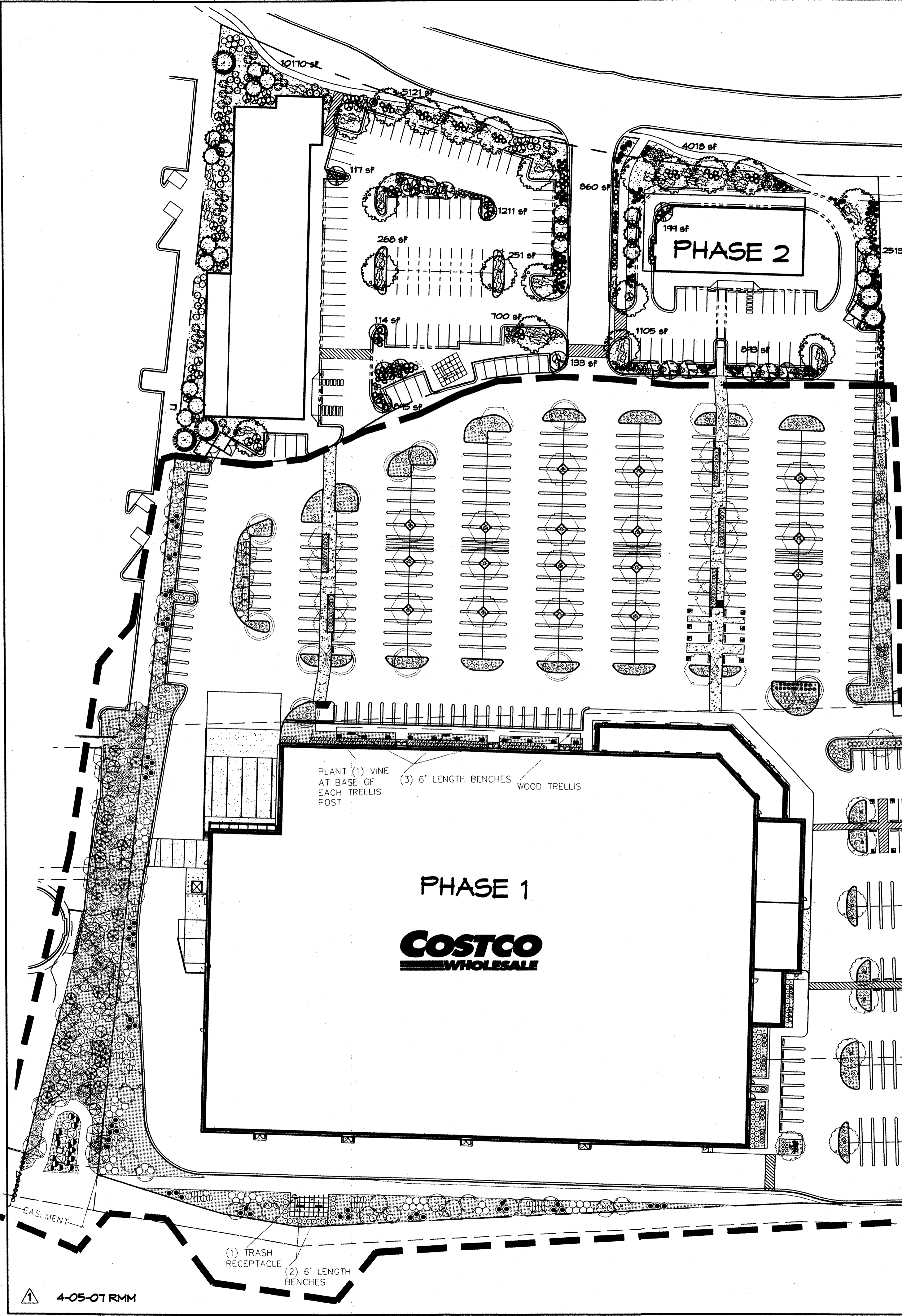
© MulvannyG2 Architecture
All rights reserved. No part of this document may be reproduced in any form or by any means without permission in writing from MulvannyG2 Architecture.

DATE	DESCRIPTION

05-0374-01
PM: GLENN BROUGHTON
DRAWN: B. ORTEGA
MARCH 20, 2007

SITE PLAN FOR SUBDIVISION

C-1.1



NOTE TO CLIENT:
Should The Hilltop not receive a Grading and Drainage plan during the design process or the on-site grades differ from the Grading and Drainage plan received, The Hilltop reserves the right to apply slope stabilization materials where the specified gravel will not be suitable. Gravel smaller than 2-4" cobblestone will not stay on a slope greater than 3:1. If the grades are greater than what was originally designed, we will request an infield change-order to lay cobblestone or rip-rap. In lieu of the specified gravel, to stabilize the slope. All vegetative material shall remain per plan.

PLANT LEGEND

- ARIZONA ASH (M) 20
Fraxinus velutina
2" Cal.
- DESERT WILLOW (L) 21
Chilopsis linearis
5 Gal. 225 sf
- RED YUCCA (L) 6
Hesperaloe parviflora
5 Gal. 45f
- REGAL MIST (M) 46
Muhlenbergia capillaris
5 Gal. 45f
- RUSSIAN SAGE (M) 21
Perovskia atriplicifolia
1 Gal. 36sf
- ARP ROSEMARY (M) 42
Rosmarinus officinalis
5 Gal. 25sf
- HONEYSUCKLE (M) 58
Lonicera japonica 'Halliana'
1 Gal. 144sf
Unstaked-Groundcover
- CREEPING ROSEMARY (L) 84
Rosmarinus officinalis 'Prostrata'
1 Gal. 36sf
Symbol indicates 3 plants
- ~ COMMERCIAL GRADE
STEEL EDGING
- SANTA FE BROWN GRAVEL
WITH FILTER FABRIC
- AUSTRIAN PINE (M) 5
Pinus nigra
6"-8"
- FLOWERING PEAR (M+) 17
Pyrus calleryana
2" Cal.
- APACHE PLUME (L) 11
Fallugia paradoxa
5 Gal. 25sf
- BLUE MIST SPIREA (M) 44
Caryopteris clandonensis
5 Gal. 45f
- LANAS/ SCOTCH BROOM (M) 59
Cytisus scoparius/
Genista hispanica
5 Gal. 16sf
- LAVENDER (M) 57
Lavandula angustifolia
1 Gal. 45f
- CHAMISA (L) 29
Chrysothamnus nauseosus
1 Gal. 25sf
- WILDFLOWER 40
1 Gal. 45f
- THREADGRASS (M) 37
Stipa tenuissima
1 Gal. 45f

LANDSCAPE CALCULATIONS

TOTAL LOT AREA	132381	square feet
TOTAL BUILDINGS AREA	26787	square feet
OFFSITE AREA	0	square feet
NET LOT AREA	105594	square feet
LANDSCAPE REQUIREMENT	15%	
TOTAL LANDSCAPE REQUIREMENT	15839	square feet
TOTAL BED PROVIDED	28568	square feet
GROUNDCOVER REQ.	75%	square feet
TOTAL GROUNDCOVER REQUIREMENT	21426	square feet
TOTAL GROUNDCOVER PROVIDED	21536 (75%)	square feet
TOTAL SOD AREA (max. 20% of landscape required)	0	square feet
TOTAL LANDSCAPE PROVIDED	28568 (21%)	square feet

LANDSCAPE NOTES:
Landscape maintenance shall be the responsibility of the Property Owner.

It is the Intent of this plan to comply with the City of Albuquerque Water Conservation Landscaping and Water Waste Ordinance planting restriction approach. Approval of this plan does not constitute or imply exemption from water waste provisions of the Water Conservation Landscaping and Water Waste Ordinance.

Water management is the sole responsibility of the Property Owner. All landscaping will be in conformance with the City of Albuquerque Zoning Code, Street Tree Ordinance, Pollen Ordinance, and Water Conservation Landscaping and Water Waste Ordinance. In general, water conservative, environmentally sound landscape principles will be followed in design and installation.

Plant beds shall achieve 75% live ground cover at maturity.

Santa Fe Brown Gravel over Filter Fabric shall be placed in all landscape areas which are not designated to receive native seed.

IRRIGATION NOTES:
Irrigation shall be a complete underground system with Trees to receive (5) 1.0 GPH Drip Emitters and Shrubs to receive (2) 1.0 GPH Drip Emitters. Drip and Bubbler systems to be tied to 1/2" poly pipe with flush caps at each end.

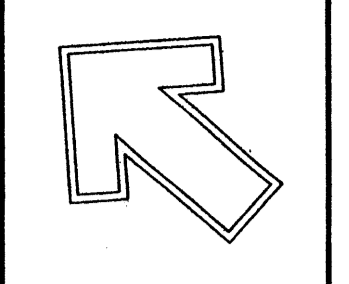
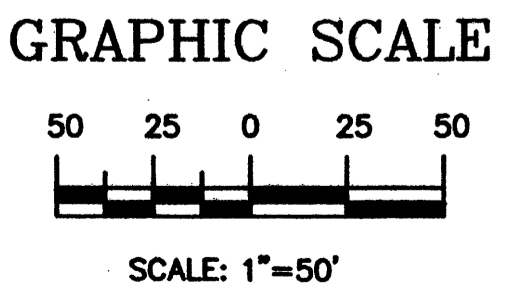
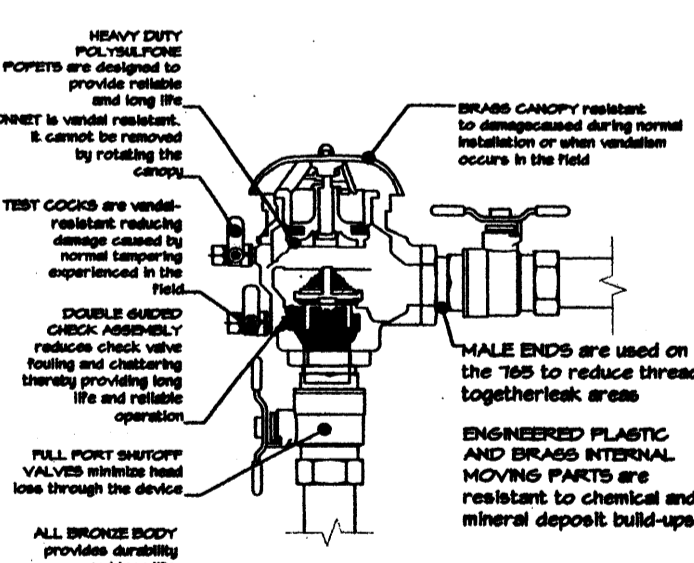
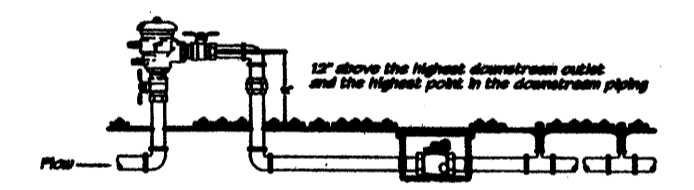
Run time per each drip valve will be approximately 15 minutes per day, to be adjusted according to the season.

Point of connection for irrigation system is unknown at current time and will be coordinated in the field. Irrigation will be operated by automatic controller.

Location of controller to be field determined and power source for controller to be provided by others.

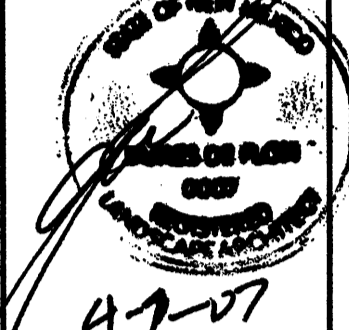
Irrigation maintenance shall be the responsibility of the Property Owner.

Water and Power source shall be the responsibility of the Developer/Builder.



Cont. Lic. #26458
7909 Edith N.E.
Albuquerque, NM 87184
Ph. (505) 898-9690
Fax (505) 898-7737
cmj@hilltoplandscaping.com

LANDSCAPE ARCHITECT'S SEAL



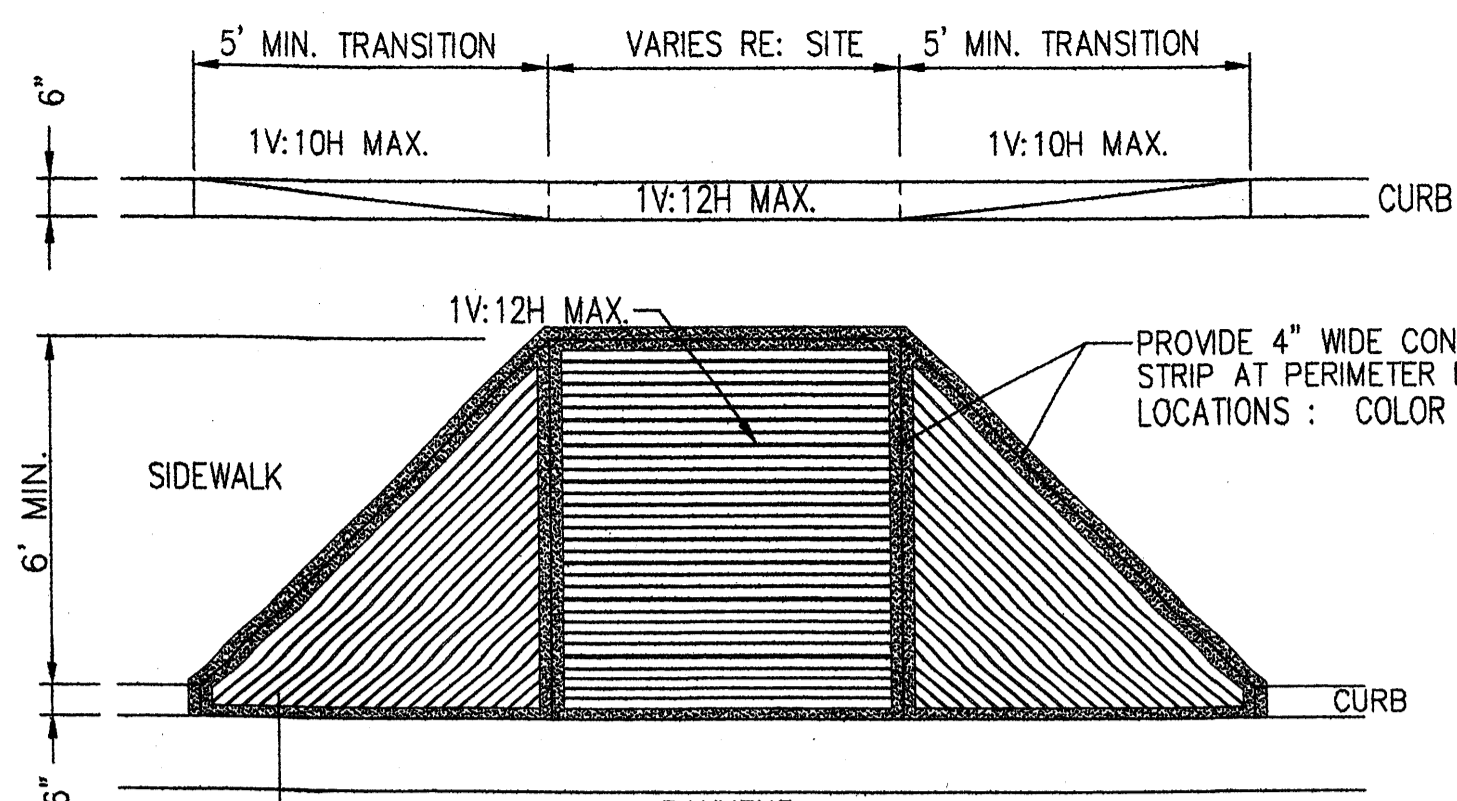
JAMES DE FLON
#0007

**COSTCO - OUTLOTS ONLY
COORS-BY-PASS
ALBUQUERQUE, NM
LANDSCAPE PLAN**

All creative ideas contained herein remain the property of The Hilltop Landscape Architects and are not to be reproduced or copied without the written consent of The Hilltop Landscape Architects. This is an original design and must be retained or copied unless applicable fees have been paid or job order placed.

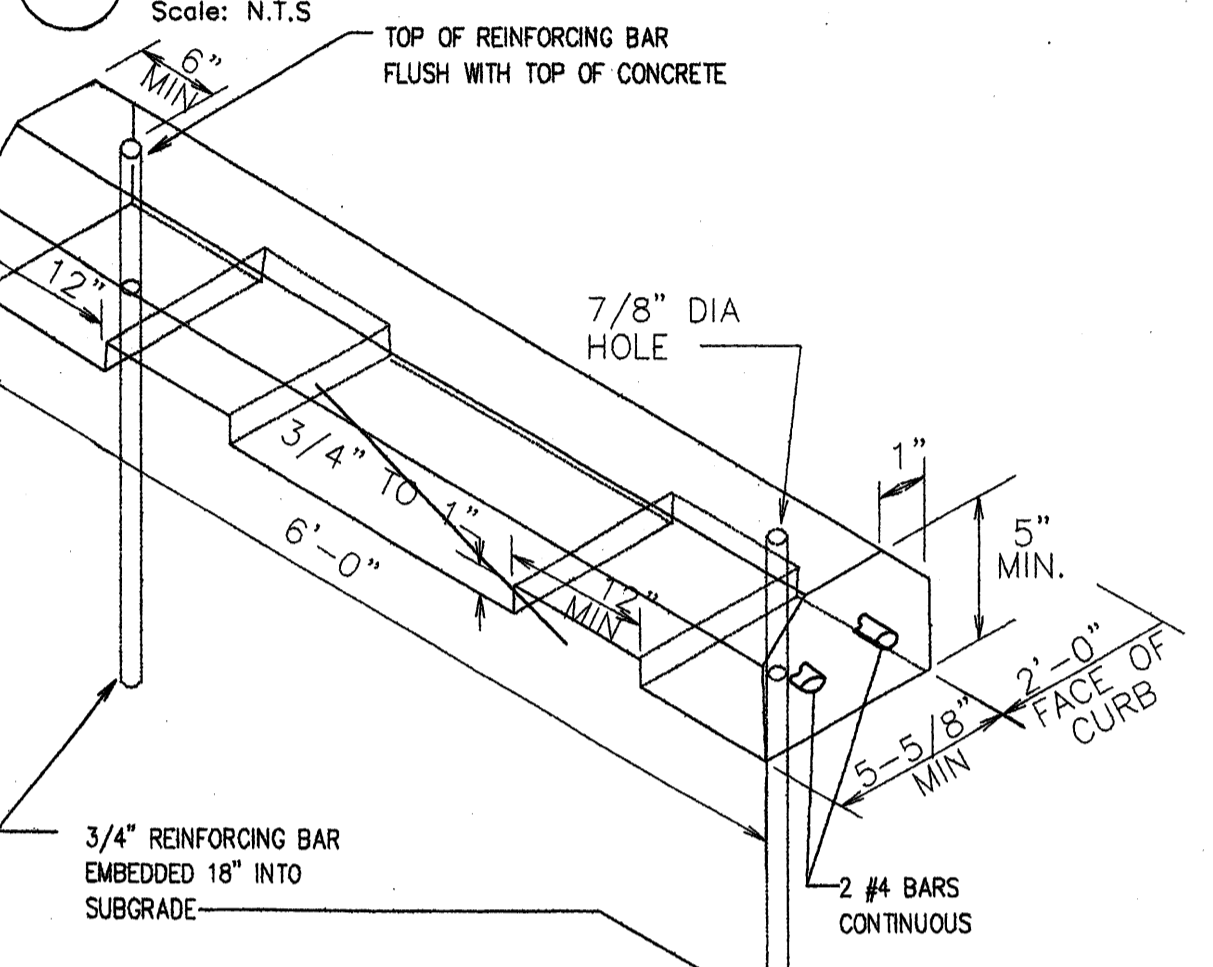
The Hilltop
LANDSCAPE ARCHITECTS & CONTRACTORS

DRAWN BY: ADF
REVISION # 1
DATE 9-6-06
SHEET # L1 OF L1

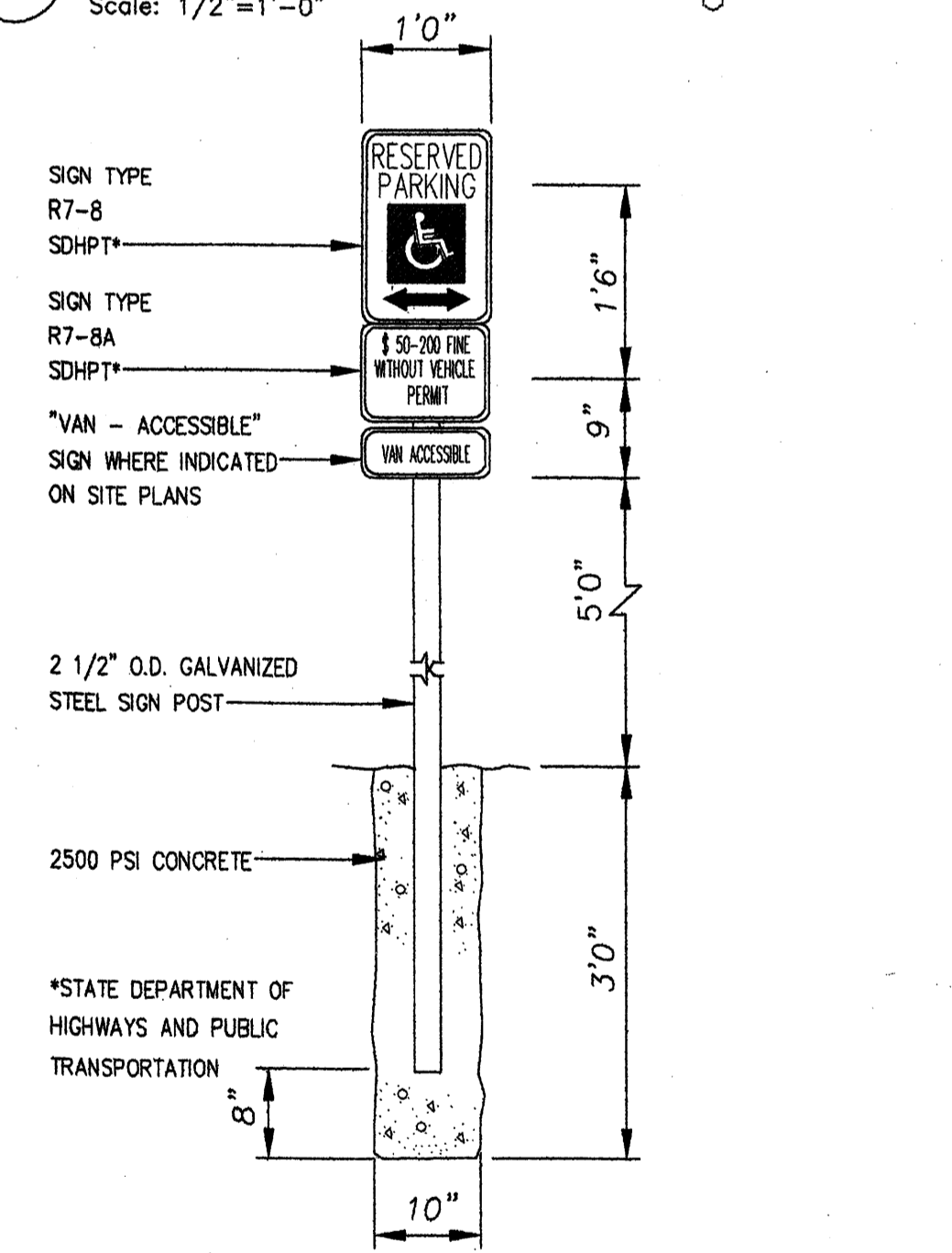


- KEYED NOTES**
- 8" CMU WALL WITH TEXTURED PAINT PAPER. COLOR TO BE BASKET BEIGE SW 6143 7.
 - FINISH GRADE.
 - SLOPE STUCCO CAP.
 - 4-#4 BARS CONT. @ BOTTOM OF FOOTING #4 @ 16" O.C. ACROSS BOTTOM OF FOOTING.
 - 2-#5 BARS @ TOP KNOCK-OUT BLOCK BOND BEAM. CONTINUOUS: #5 BARS @ 32" O.C. VERTICAL. GROUT REINFORCED CELLS, DURAWALL @ 16" O.C. HORIZONTAL.
 - 1/2" EXPANSION JOINT MATERIAL
 - 4" CONCRETE SLAB 3000 PSI 3/4" AGGREGATE WITH 6X6 - 10X10 W/M.
 - 6" CONCRETE APRON 3000 PSI 3/4" AGGREGATE WITH 6X6 - 10X10 W/M W/ TURNDOWN EDGE.
 - 6" CONCRETE FILLED PIPE IN 16" DIA. X 2'-6" DEEP CONC. FOOTING. PAINT TO MATCH STUCCO FINISH.
 - ASPHALT PAVING
 - GROUT ALL CELLS SOLID BELOW GRADE, TYPICAL.

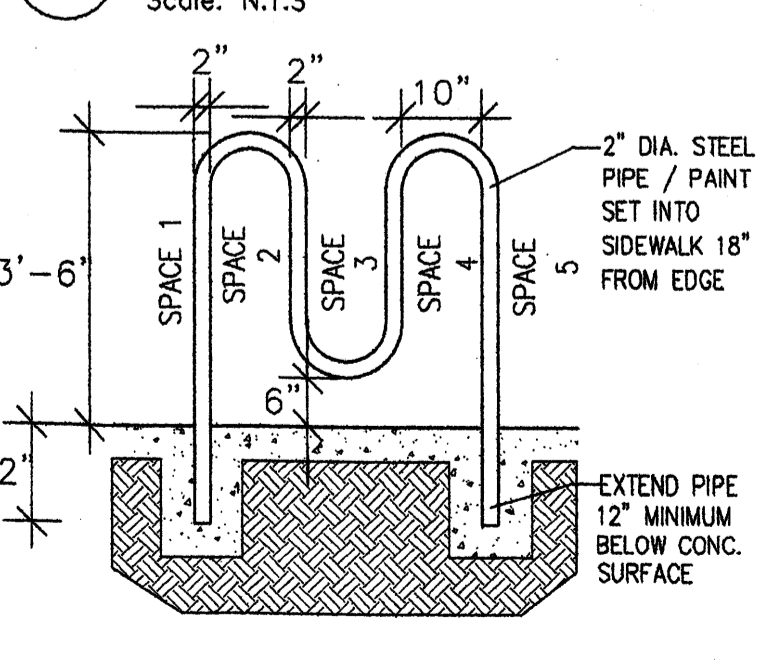
1 H.C RAMP



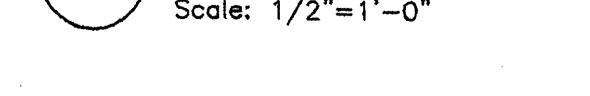
2 BOLLARD DETAIL



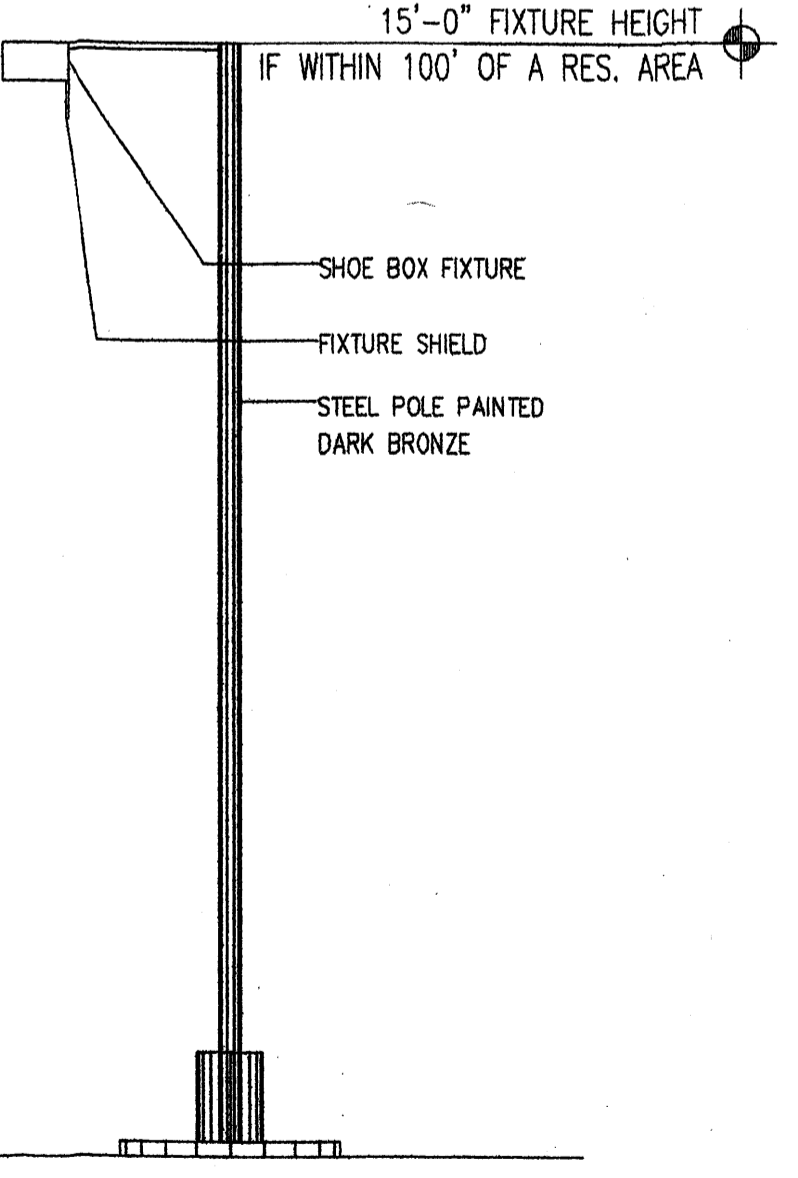
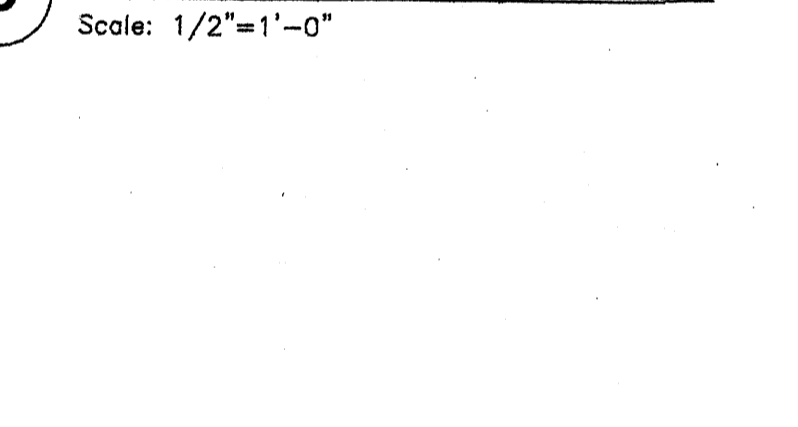
3 H.C SIGN DETAIL



4 BIKE RACK



5 BOLLARD DETAIL

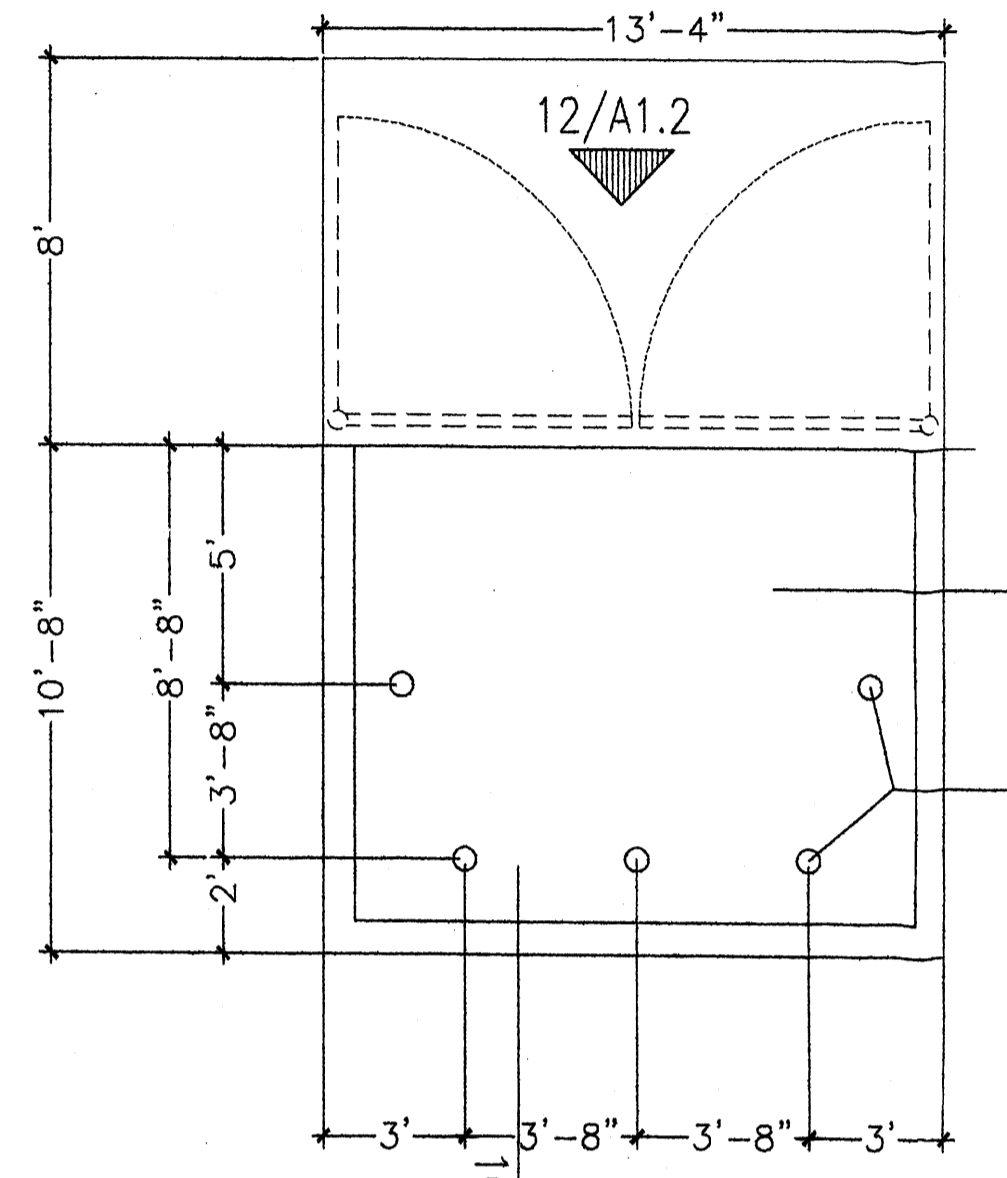


6 LIGHT POLE DETAIL



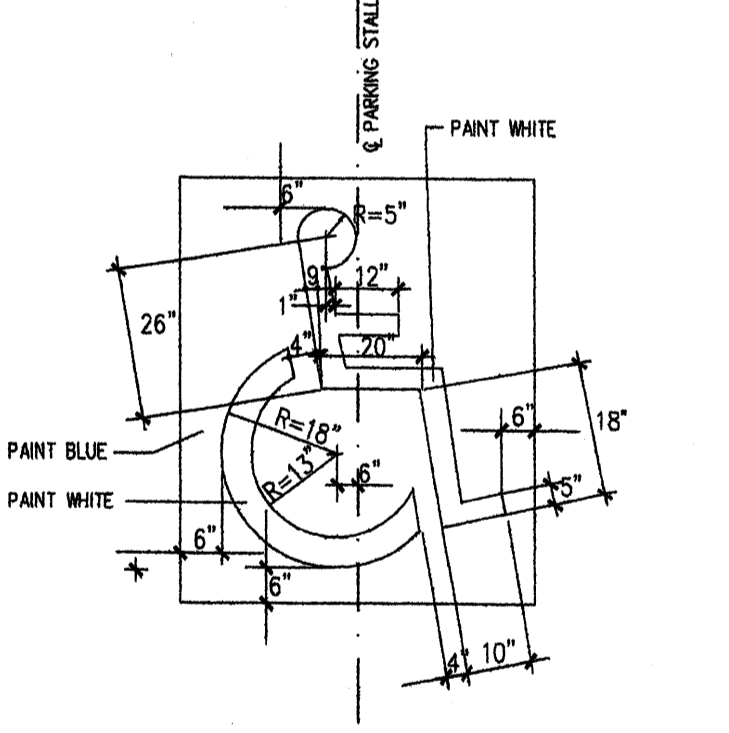
7 ENCLOSURE NOTES

Scale: N.T.S.



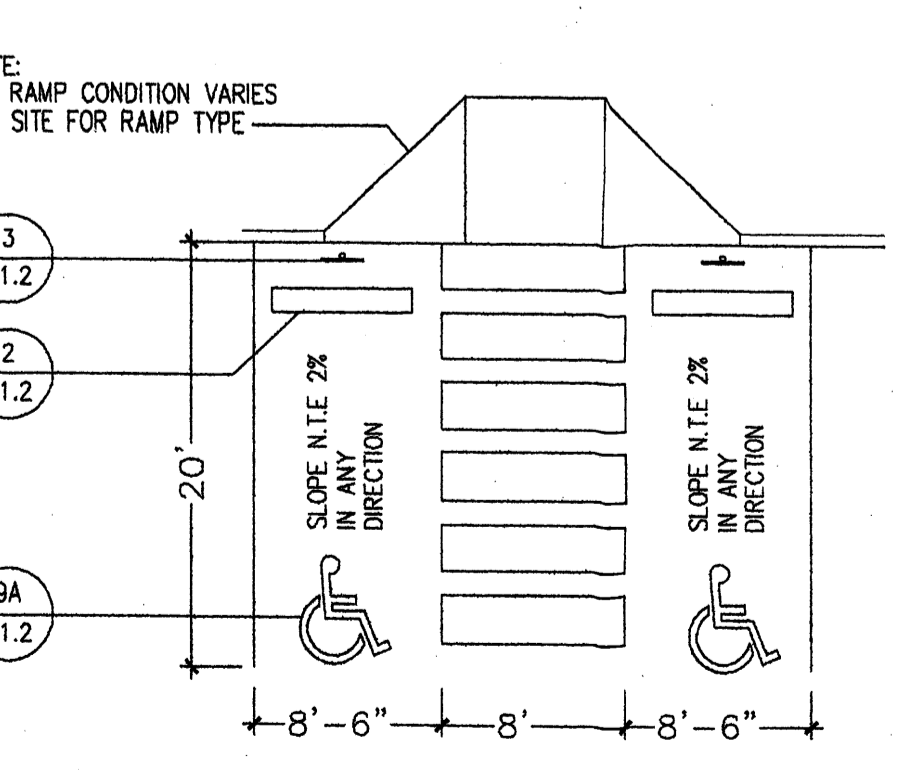
8 DUMPSTER PLAN

Scale: 1/2"=1'-0"



9A H.C SYMBOL

Scale: N.T.S.

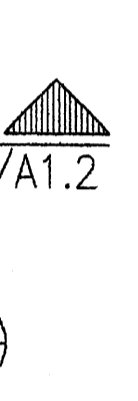


9 H.C TYP. PARKING DET.



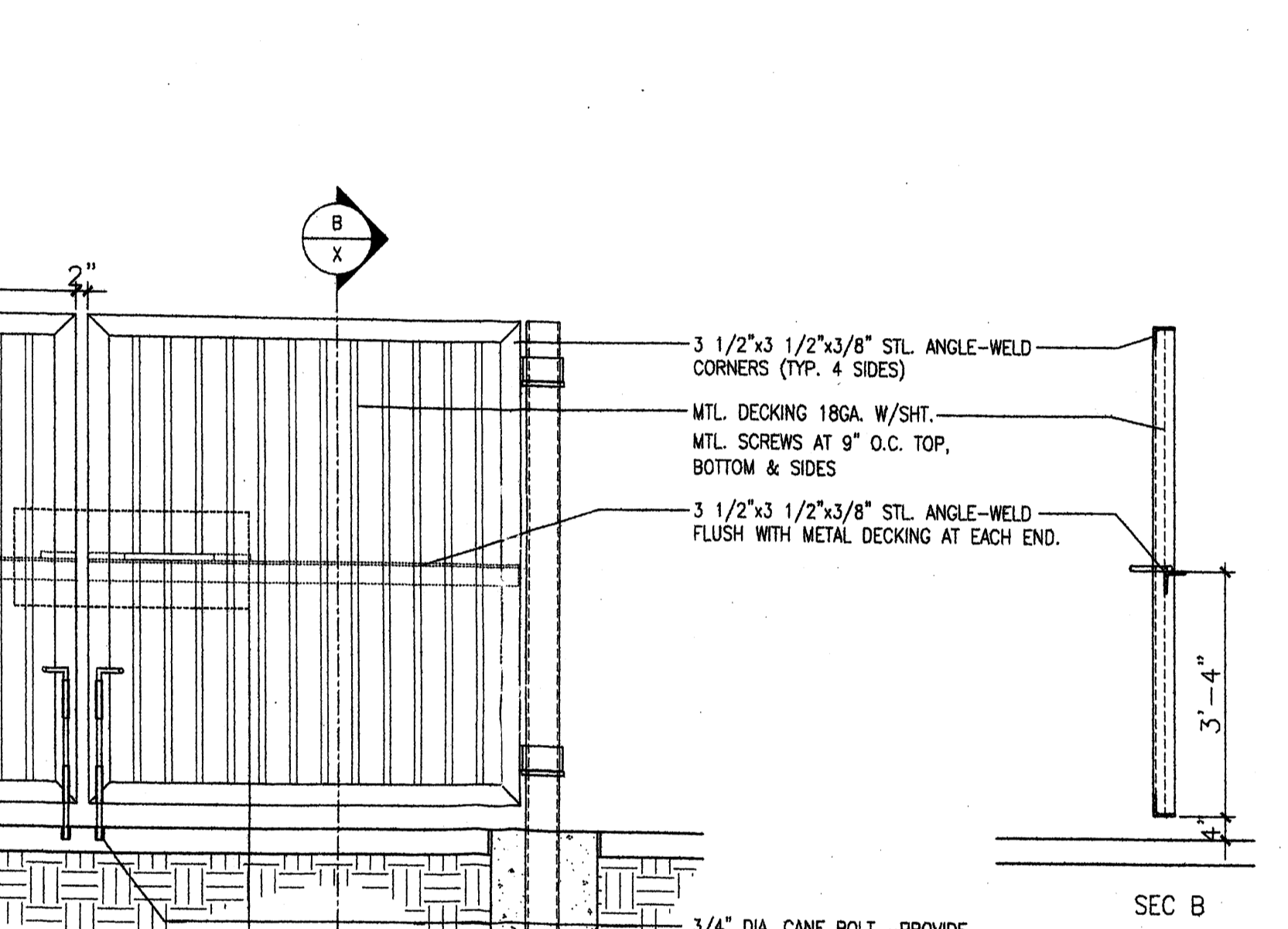
10 DUMPSTER SEC

Scale: 1/2"=1'-0"



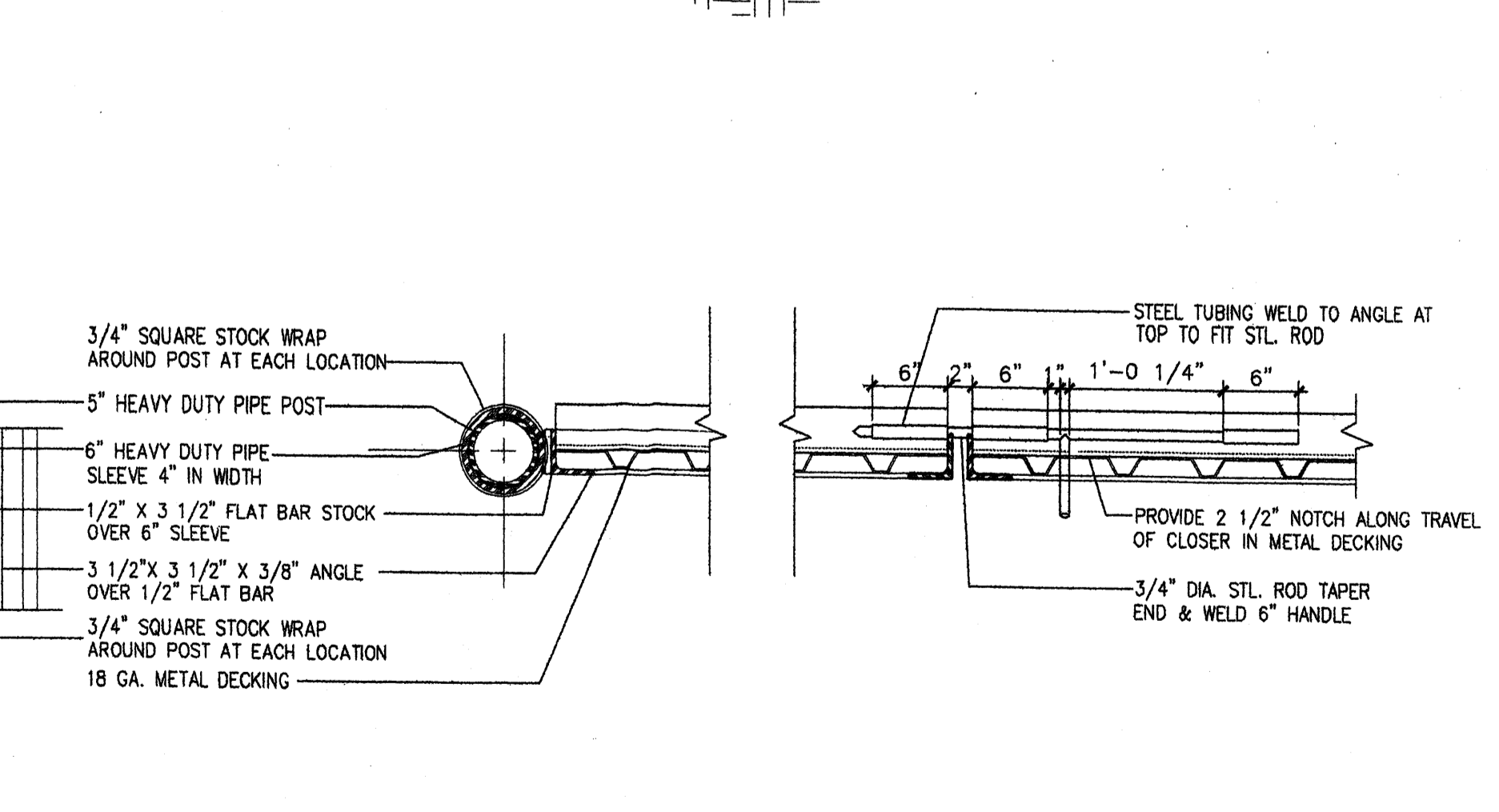
11 DUMPSTER SEC

Scale: 1/2"=1'-0"



12 GATE ELEV.

Scale: 1/2"=1'-0"



13 GATE POST/SLIDE BOLT DET.

Scale: 1"=1'-0"



REV	DATE	BY	REVISION

GEORGE RAINHART ARCHITECT AND ASSOCIATES PC
 2325 SAN PEDRO NE. SUITE 2-B
 ALBUQUERQUE, NEW MEXICO 87110
 PHONE (505) 864-9110 FAX (505) 837-9877

PROJECT TITLE
COSTCO DEVELOPMENT
 N.W.C. OF COORS BYPASS-EAGLE RANCH RD.
 ALBUQUERQUE, NEW MEXICO

PROJECT MANAGER
 STEPHEN DUNBAR AA

DRAWN BY:
 SD

JOB NO.
 SD

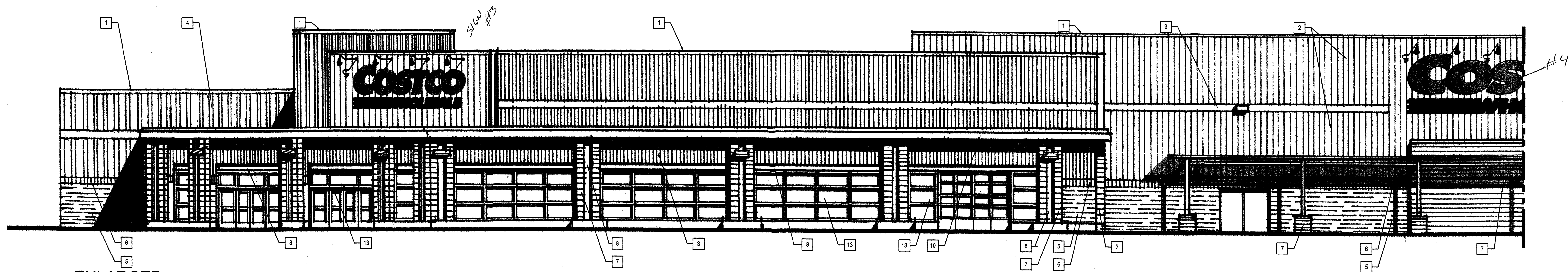
SHEET TITLE
SITE DETAIL PLAN

DATE:
 10/10/04

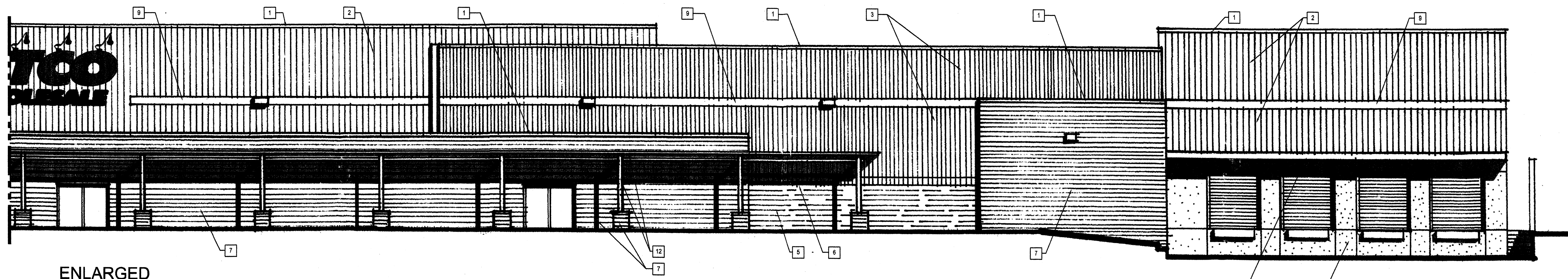
SCALE:
 1/8"=1'-0"

sheet-
A1.2

of-



1
ENLARGED NORTH ELEVATION
SCALE: 1/8"=1'-0"



2
ENLARGED NORTH ELEVATION
SCALE: 1/8"=1'-0"

EXTERIOR FINISH SCHEDULE					
#	ITEM	MATERIAL	FINISH	COLOR	NOTES
1	COPIING	METAL	KYNAR 500	DARK BRONZE	
2	UPPER WALL	ARCHITECTURAL PANEL	PRE-FINISHED	LIGHT TAN	
3	UPPER WALL	ARCHITECTURAL PANEL	PRE-FINISHED	DARK BRONZE	
4	UPPER WALL	ARCHITECTURAL PANEL	PRE-FINISHED	TERRACOTTA	
5	LOWER WALL	CMU	SPLIT FACE	DARK BROWN	
6	ACCENT BAND	CMU	SMOOTH FACE	DARK BROWN	
7	ACCENT LOWER WALL	CMU	SPLIT FACE	DARK TAN	
8	METAL ACCENT	STEEL	PAINT	DARK BROWN	
9	STRIPES	ARCHITECTURAL PANEL	PRE-FINISHED	RED	
10	CANOPY	METAL ROOFING	PRE-FINISHED	DARK BROWN	
11	LOWER WALL	CONCRETE	PAINT	GRAY	
12	TRELLIS	WOOD	STAIN, SEAL		
13	STOREFRONT	GLAZING, ALUMINUM	PREFINISHED		

SWC COORS BLVD. BYPASS AND EAGLE RANCH ROAD



1110 112TH AVE. NE | SUITE 500
BELLEVUE, WA | 98004
1.425.463.2000 | 1.425.463.2002

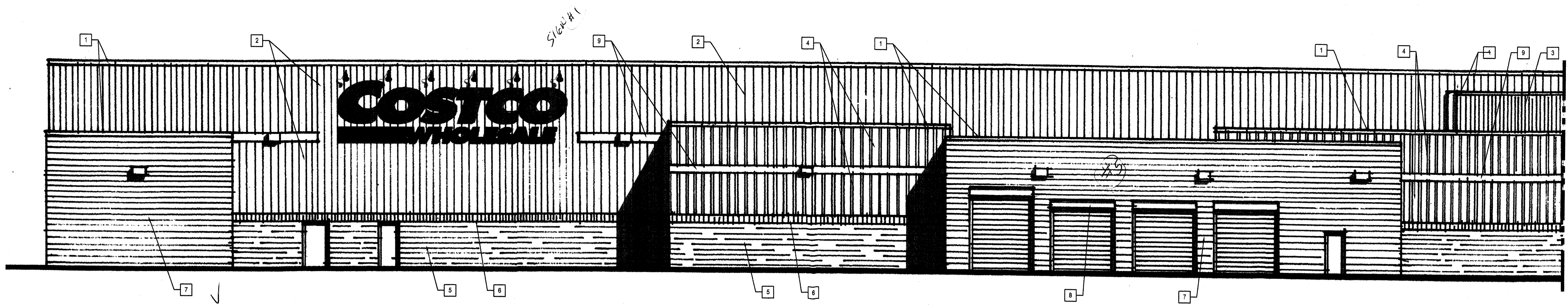
MulvannyG2.com

05-0374-01
APRIL 03, 2007
CONCEPT ELEVATIONS

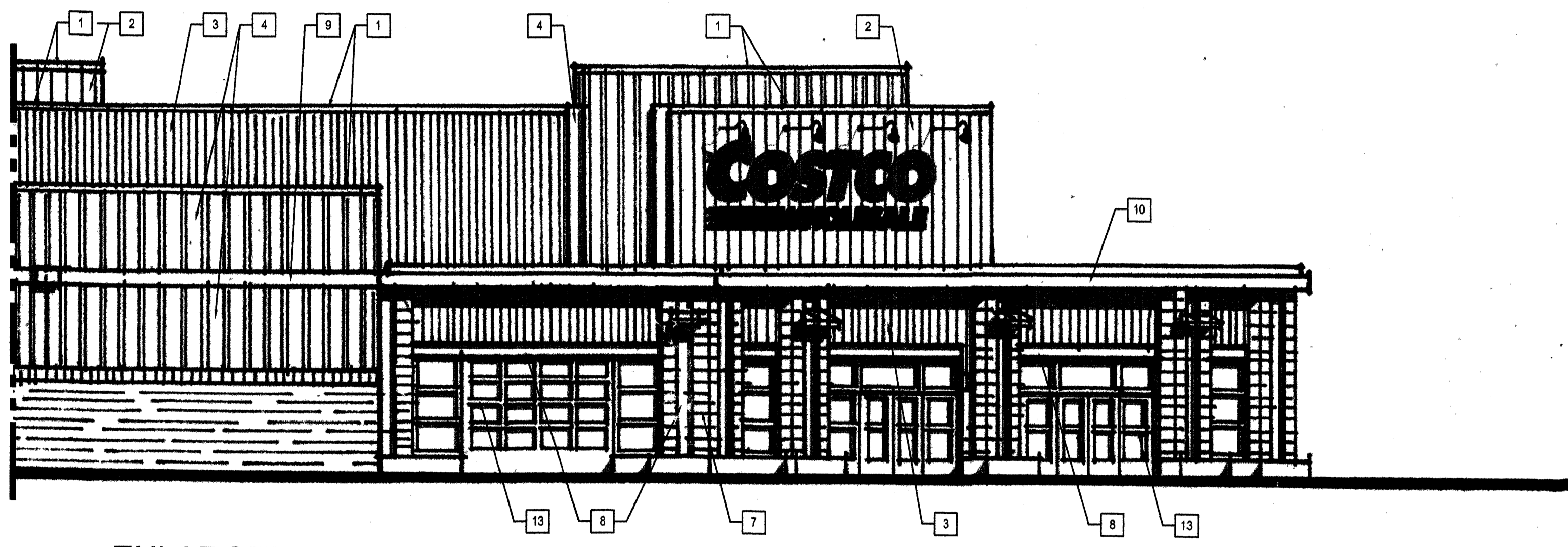
DD3.2-01

COSTCO WHOLESALE
ALBUQUERQUE, NEW MEXICO

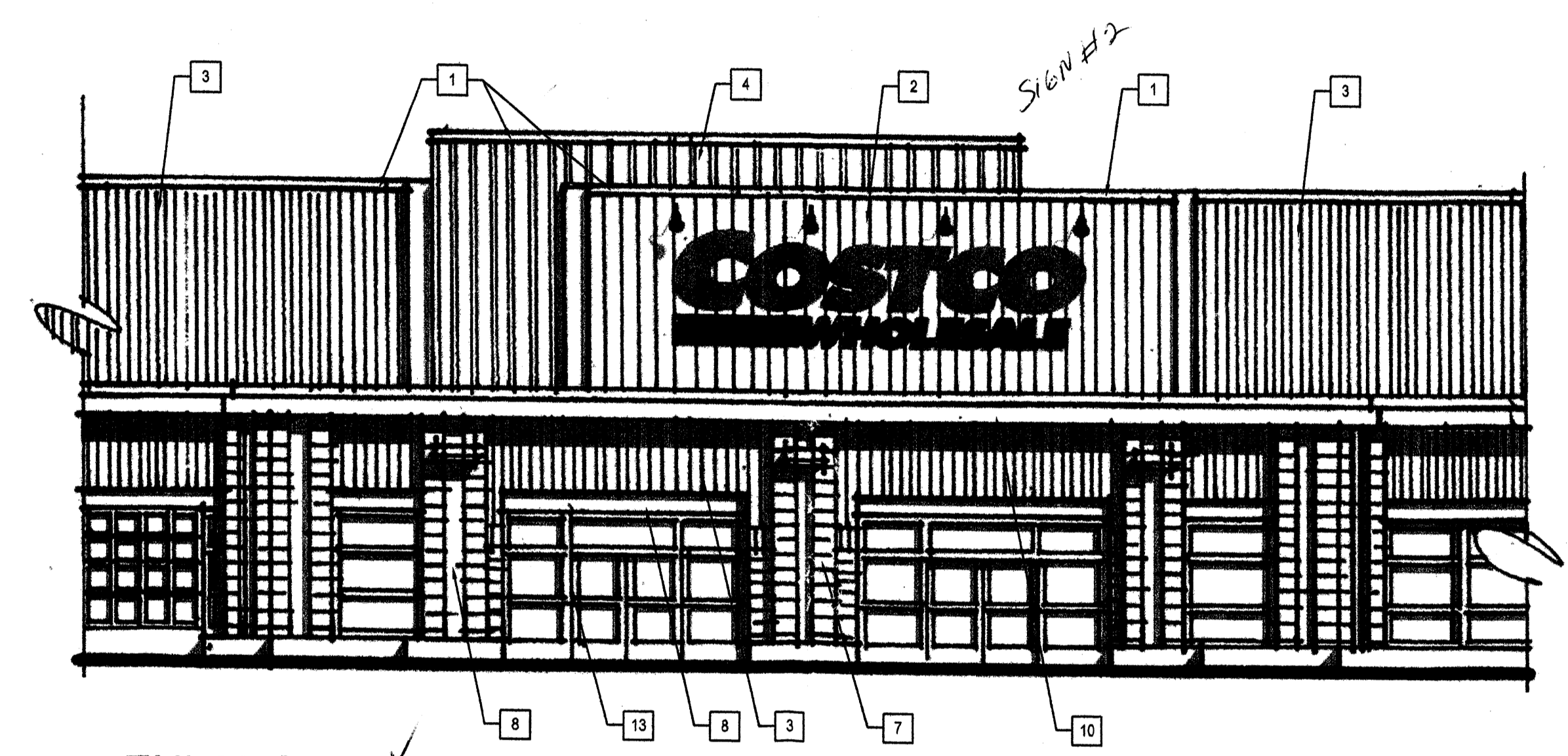
CONCEPT ELEVATIONS
APRIL 03, 2007



1 ENLARGED EAST ELEVATION
SCALE: 1/8"=1'-0"



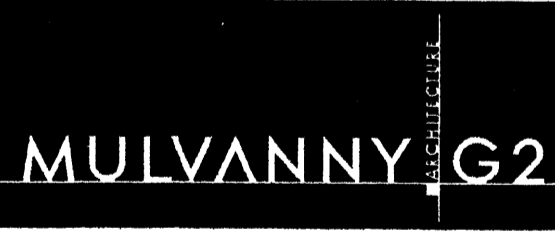
2 ENLARGED EAST ELEVATION
SCALE: 1/8"=1'-0"



3 ENLARGED ENTRANCE ELEVATION
SCALE: 1/8"=1'-0"

EXTERIOR FINISH SCHEDULE					
#	ITEM	MATERIAL	FINISH	COLOR	NOTES
1	COPING	METAL	KYNAR 500	DARK BRONZE	
2	UPPER WALL	ARCHITECTURAL PANEL	PRE-FINISHED	LIGHT TAN	
3	UPPER WALL	ARCHITECTURAL PANEL	PRE-FINISHED	DARK BRONZE	
4	UPPER WALL	ARCHITECTURAL PANEL	PRE-FINISHED	TERRACOTTA	
5	LOWER WALL	CMU	SPLIT FACE	DARK BROWN	
6	ACCENT BAND	CMU	SMOOTH FACE	DARK BROWN	
7	ACCENT LOWER WALL	CMU	SPLIT FACE	DARK TAN	
8	METAL ACCENT	STEEL	PAINT	DARK BROWN	
9	STRIPE	ARCHITECTURAL PANEL	PRE-FINISHED	RED	
10	CANOPY	METAL ROOFING	PRE-FINISHED	DARK BROWN	
11	LOWER WALL	CONCRETE	PAINT	GRAY	
12	TRELLIS	WOOD	STAIN, SEAL		
13	STOREFRONT	GLAZING, ALUMINUM	PREFINISHED		

SWC COORS BLVD. BYPASS AND EAGLE RANCH ROAD



1110 112TH AVE. NE | SUITE 500
BELLEVUE, WA | 98004
1.425.463.2000 | 1.425.463.2002

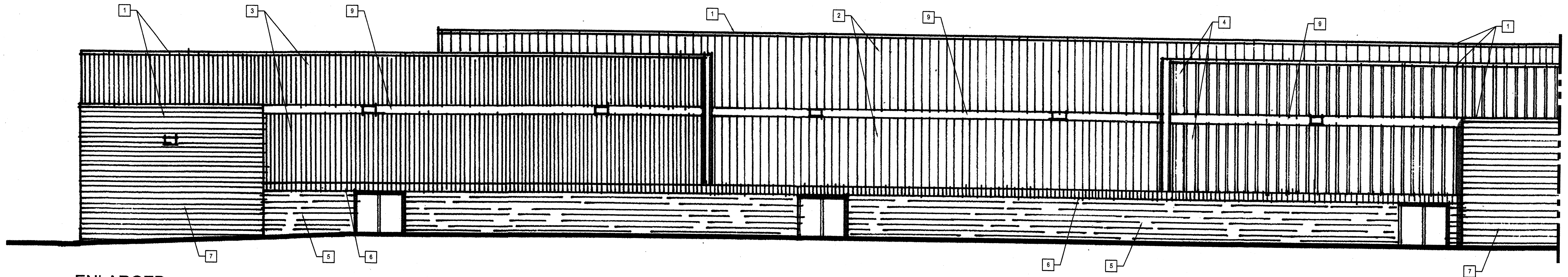
MulvannyG2.com

05-0374-01
APRIL 03, 2007
CONCEPT ELEVATIONS

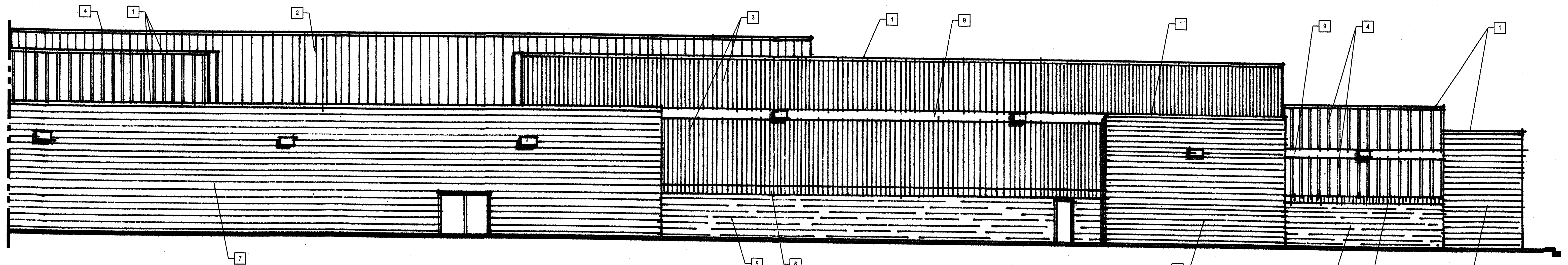
COSTCO WHOLESALE
ALBUQUERQUE, NEW MEXICO

CONCEPT ELEVATIONS
APRIL 03, 2007

DD3.3-01



1 ENLARGED SOUTH ELEVATION
SCALE: 1/8"=1'-0"



2 ENLARGED SOUTH ELEVATION
SCALE: 1/8"=1'-0"

EXTERIOR FINISH SCHEDULE					
#	ITEM	MATERIAL	FINISH	COLOR	NOTES
1	COPING	METAL	KYNAR 500	DARK BRONZE	
2	UPPER WALL	ARCHITECTURAL PANEL	PRE-FINISHED	LIGHT TAN	
3	UPPER WALL	ARCHITECTURAL PANEL	PRE-FINISHED	DARK BRONZE	
4	UPPER WALL	ARCHITECTURAL PANEL	PRE-FINISHED	TERRACOTTA	
5	LOWER WALL	CMU	SPLIT FACE	DARK BROWN	
6	ACCENT BAND	CMU	SMOOTH FACE	DARK BROWN	
7	ACCENT LOWER WALL	CMU	SPLIT FACE	DARK TAN	
8	METAL ACCENT	STEEL	PAINT	DARK BROWN	
9	STRIPE	ARCHITECTURAL PANEL	PRE-FINISHED	RED	
10	CANOPY	METAL ROOFING	PRE-FINISHED	DARK BROWN	
11	LOWER WALL	CONCRETE	PAINT	GRAY	
12	TRELLIS	WOOD	STAIN, SEAL		
13	STOREFRONT	GLAZING, ALUMINUM	PREFINISHED		

SWC COORS BLVD. BYPASS
AND EAGLE RANCH ROAD

MULVANNY G2

1110 112TH AVE. NE | SUITE 500
BELLEVUE, WA | 98004
t 425.463.2000 | f 425.463.2002

MulvannyG2.com

05-0374-01
APRIL 03, 2007

CONCEPT
ELEVATIONS

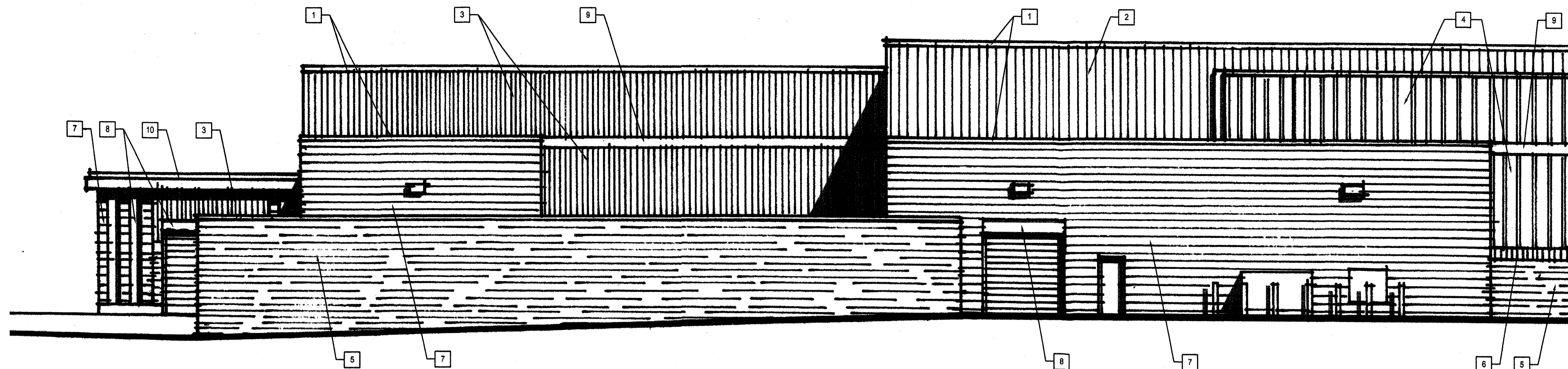
DD3.4-01

COSTCO WHOLESALE

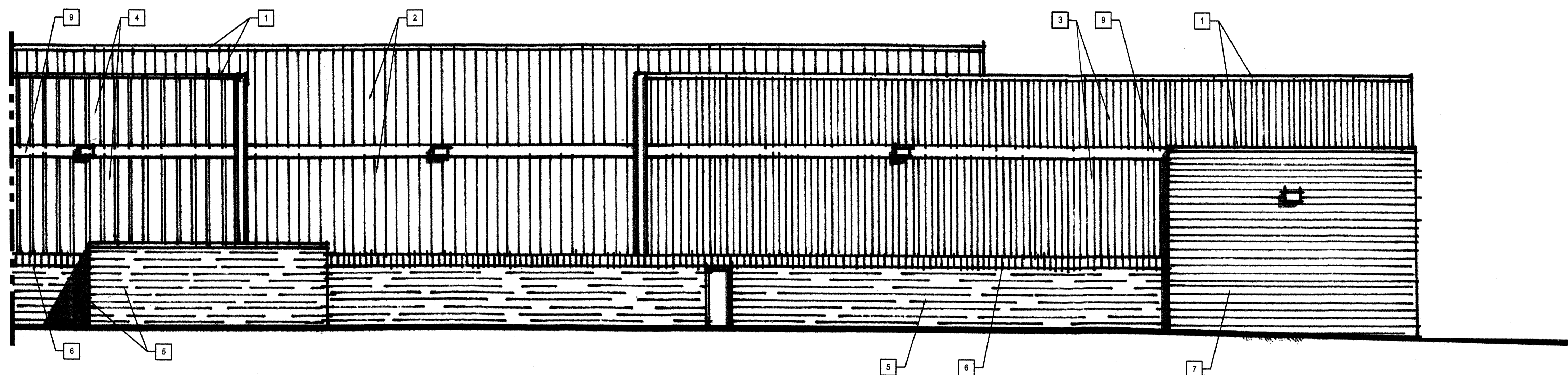
ALBUQUERQUE, NEW MEXICO

CONCEPT ELEVATIONS

APRIL 03, 2007



ENLARGED
WEST ELEVATION
①
SCALE: 1/8"=1'-0"



ENLARGED
WEST ELEVATION
②
SCALE: 1/8"=1'-0"

EXTERIOR FINISH SCHEDULE					
#	ITEM	MATERIAL	FINISH	COLOR	NOTES
1	COPING	METAL	KYNAR 500	DARK BRONZE	
2	UPPER WALL	ARCHITECTURAL PANEL	PRE-FINISHED	LIGHT TAN	
3	UPPER WALL	ARCHITECTURAL PANEL	PRE-FINISHED	DARK BRONZE	
4	UPPER WALL	ARCHITECTURAL PANEL	PRE-FINISHED	TERRACOTTA	
5	LOWER WALL	CMU	SPLIT FACE	DARK BROWN	
6	ACCENT BAND	CMU	SMOOTH FACE	DARK BROWN	
7	ACCENT LOWER WALL	CMU	SPLIT FACE	DARK TAN	
8	METAL ACCENT	STEEL	PAINT	DARK BROWN	
9	STRIPE	ARCHITECTURAL PANEL	PRE-FINISHED	RED	
10	CANOPY	METAL ROOFING	PRE-FINISHED	DARK BROWN	
11	LOWER WALL	CONCRETE	PAINT	GRAY	
12	TRELLIS	WOOD	STAIN, SEAL		
13	STOREFRONT	GLAZING, ALUMINUM	PRE-FINISHED		

SWC COORS BLVD. BYPASS
AND EAGLE RANCH ROAD

MULVANNY G2

1110 112TH AVE. NE | SUITE 500
BELLEVUE, WA | 98004
t 425.463.2000 | f 425.463.2002

MulvannyG2.com

05-0374-01
APRIL 03, 2007
CONCEPT
ELEVATIONS

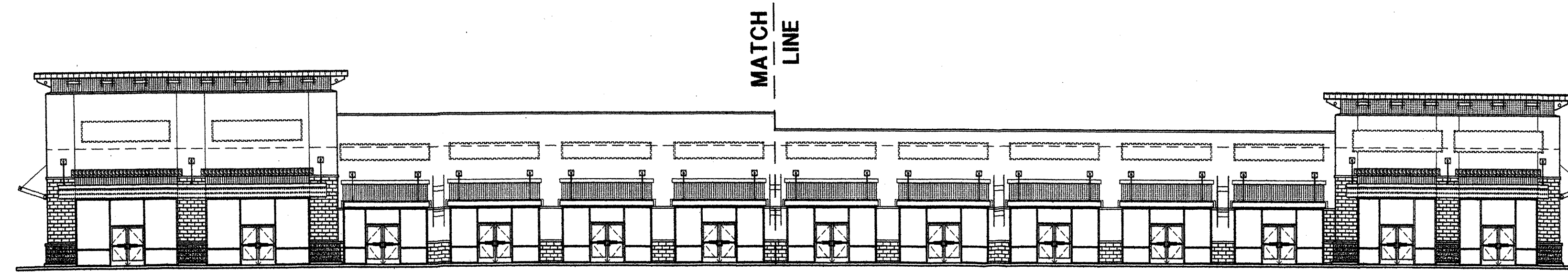
DD3.5-01

COSTCO WHOLESAL

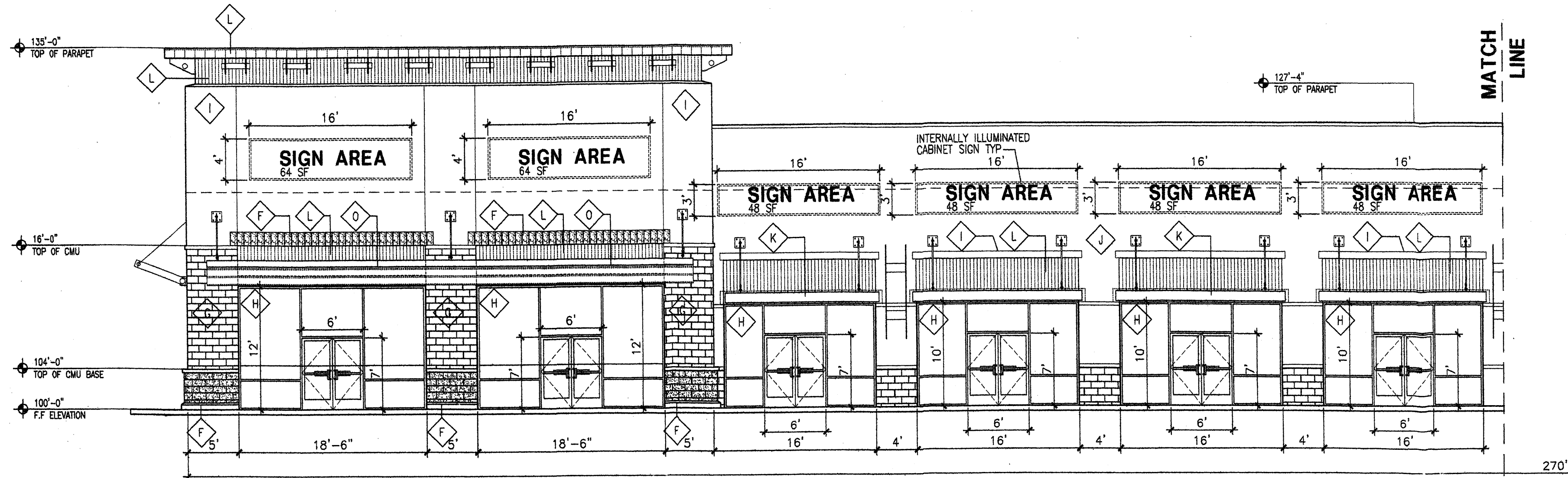
ALBUQUERQUE, NEW MEXICO

CONCEPT ELEVATIONS

APRIL 03, 2007

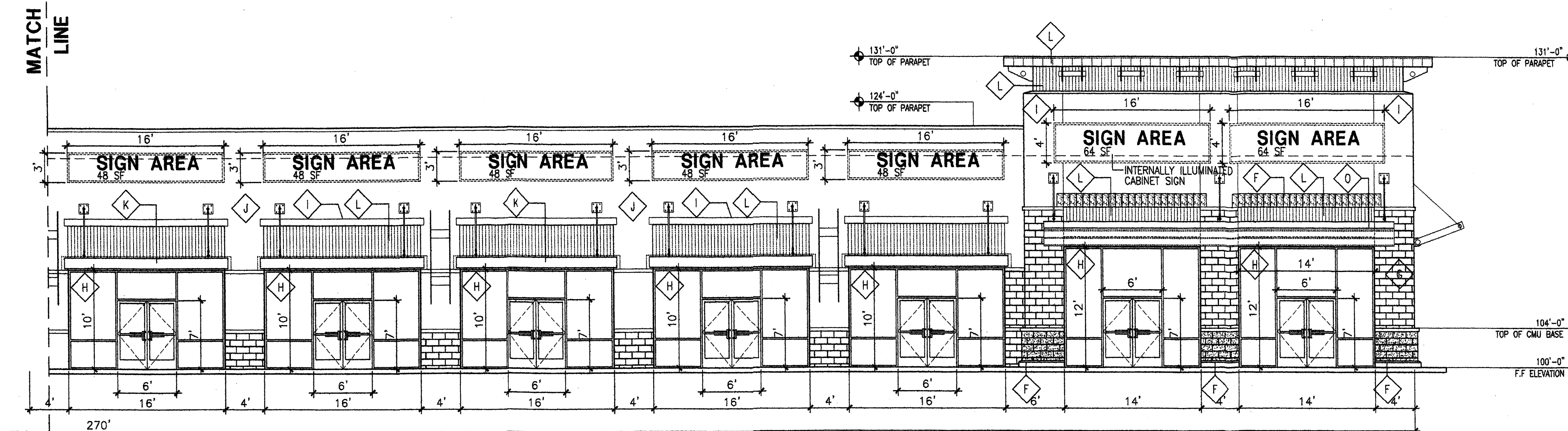


1 EASTERN OVERALL ELEVATION (REFERENCE)
Scale: 1/16"=1'



1 EASTERN ELEVATION
Scale: 1/8"=1'

Keyed Color / Material Schedule	
Ⓐ	CMU BLOCK UTILITY BLOCK COMPANY SPLIT FACE BLOCK COLOR #110 YBOULDER(GREY COLOR)
Ⓑ	CMU BLOCK UTILITY BLOCK COMPANY SPLIT FACE BLOCK COLOR #940 YELLOW SAGE(LIGHT TAN COLOR)
Ⓒ	CMU BLOCK UTILITY BLOCK COMPANY SPLIT FACE BLOCK COLOR #220 ELKHORN(LIGHT BROWN COLOR)
Ⓓ	CMU BLOCK UTILITY BLOCK COMPANY SPLIT FACE BLOCK COLOR #280 CHESTNUT(DARK BROWN COLOR)
Ⓔ	CMU BLOCK UTILITY BLOCK COMPANY SPLIT FACE BLOCK COLOR #280 CHESTNUT(DARK BROWN COLOR)
Ⓕ	CMU BLOCK UTILITY BLOCK COMPANY SPLIT FACE BLOCK COLOR #310 FIRE AND ICE(RED COLOR)
Ⓖ	CMU BLOCK UTILITY BLOCK COMPANY SPLIT FACE BLOCK COLOR #810 DOMINO(BLACK COLOR)
Ⓗ	STOREFRONT CLEAR ANNOZIED ALUMINUM(SILVER COLOR)
Ⓘ	WALL FINISH COLOR SHERWIN WILLIAMS BASKET BEIGE SW 6143(DARK TAN)
Ⓝ	WALL FINISH COLOR SHERWIN WILLIAMS WOOL SKEIN SW 6148(LIGHT TAN)
Ⓚ	WALL FINISH COLOR SHERWIN WILLIAMS PACER WHITE SW 6098(WHITE)
Ⓛ	WALL FINISH MATERIAL STYLE WALL II FLUTED ARCHITECTURAL 16" WALL PANEL COLOR SHELL GREY (GREY COLOR)
Ⓜ	WALL FINISH MATERIAL T10D 36" ARCHITECTURAL METAL PANNEL COLOR BURGUNDY
Ⓝ	WALL FINISH MATERIAL T10B 36" ARCHITECTURAL METAL PANNEL COLOR MESI GREY (BROWN)
Ⓞ	WALL FINISH COLOR SHERWIN WILLIAMS COLOR RO WATCH FIRE AND ICE(RED)

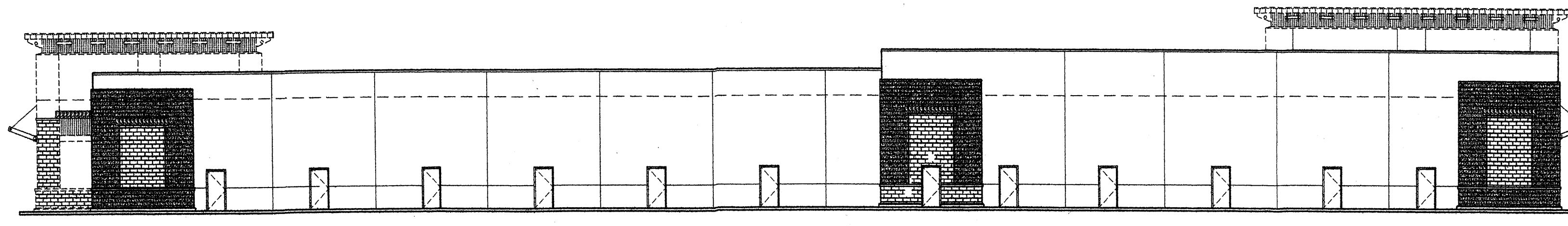


1A EASTERN ELEVATION
Scale: 1/8"=1'

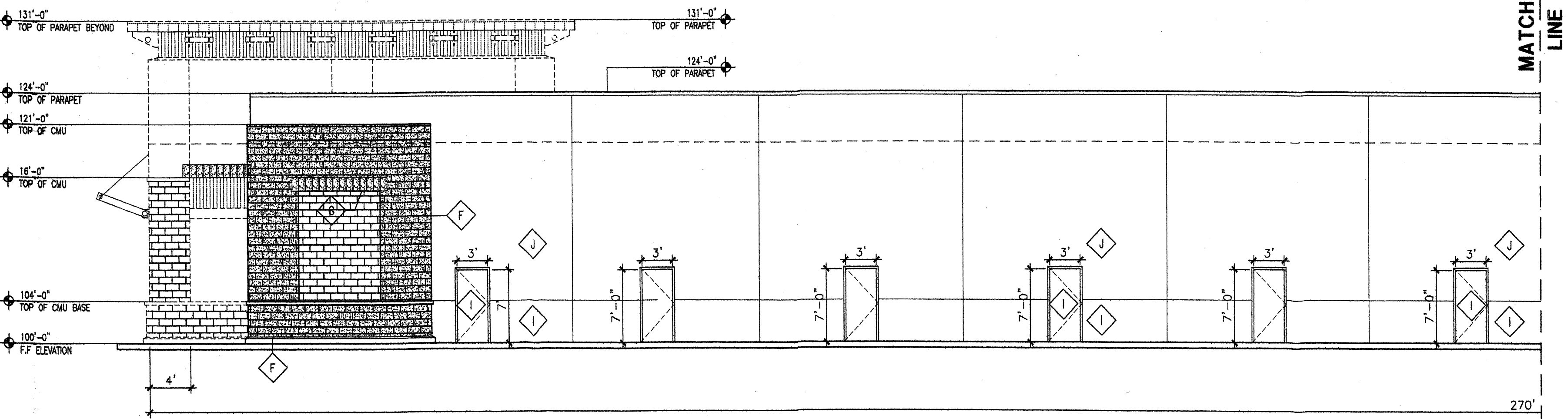
REV	DATE	BY	REVISION

GEORGE RAINHART ARCHITECT AND ASSOCIATES PC
2325 SAN PEDRO N.E. SUITE 2-B
ALBUQUERQUE, NEW MEXICO 87110
PHONE (505) 884-9110 FAX (505) 837-9877

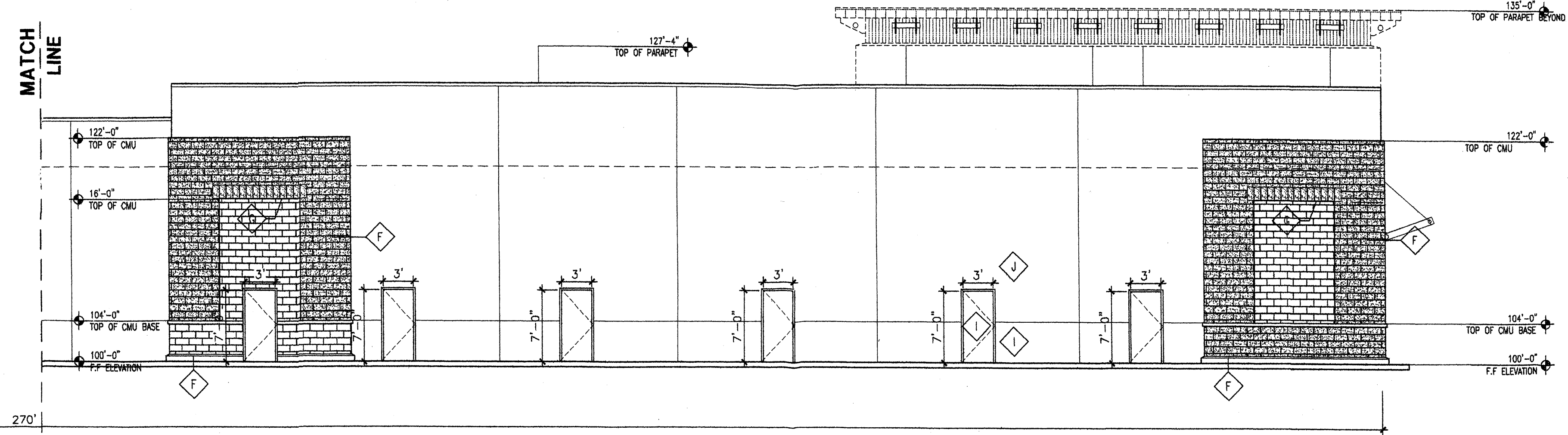
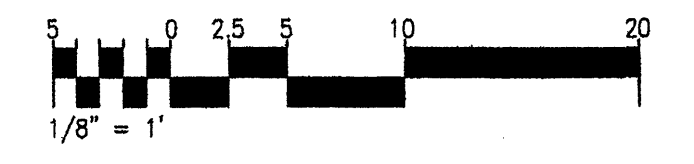
PROJECT TITLE SHOPS-IGOSTCO DEVELOPMENT N.W.C. OF COORS, BYPASS-EAGLE RANCH RD. ALBUQUERQUE NEW MEXICO		DRAWN BY: SD	
PROJECT MANAGER STEPHEN DUNBAR AIA		JOB NO.	
SHEET TITLE CONCEPT ELEVATIONS		DATE: 10/10/04	
SCALE: 1/8"=1'-0"		sheet- A4.4	



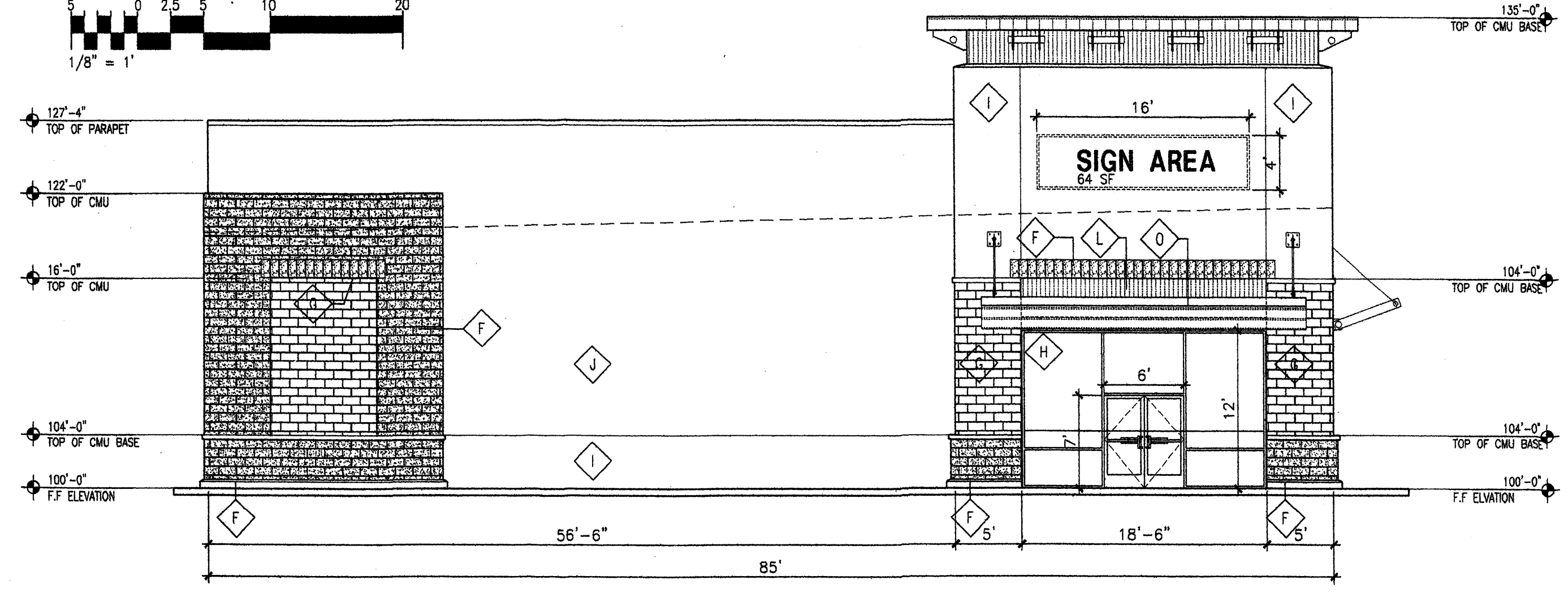
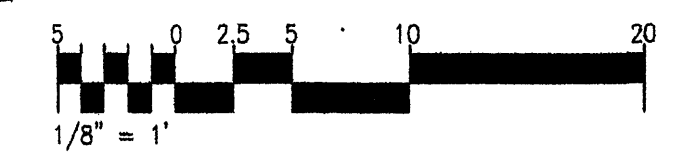
1 WESTERN OVERALL ELEVATION (REFERENCE)
Scale: 1/16"=1'



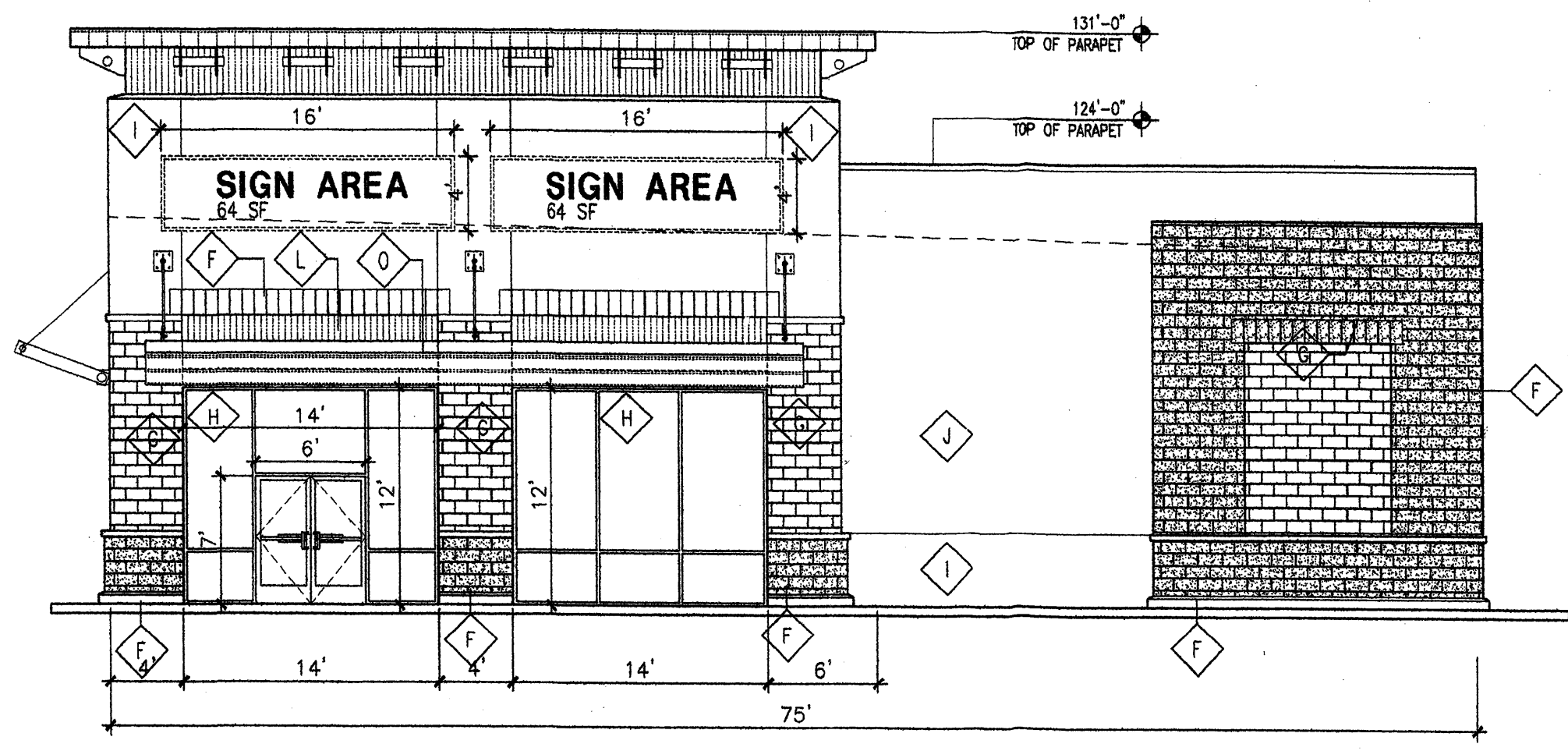
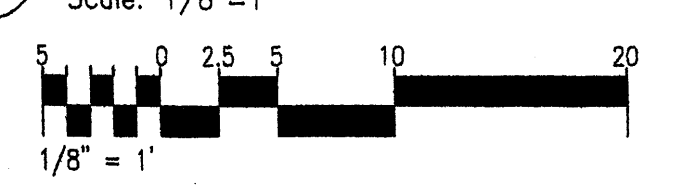
1 WESTERN ELEVATION
Scale: 1/8"=1'



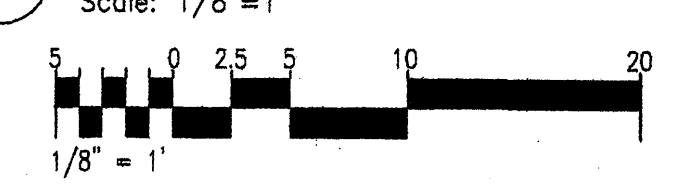
1A WESTERN ELEVATION
Scale: 1/8"=1'



2 SOUTHERN ELEVATION
Scale: 1/8"=1'



3 NORTHERN ELEVATION
Scale: 1/8"=1'



Keyed Color / Material Schedule	
A	CMU BLOCK UTILITY BLOCK COMPANY SPLIT FACE BLOCK COLOR #110 YBOULDER(GREY COLOR)
B	CMU BLOCK UTILITY BLOCK COMPANY SPLIT FACE BLOCK COLOR #940 YELLOW SAGE(LIGHT TAN COLOR)
C	CMU BLOCK UTILITY BLOCK COMPANY SPLIT FACE BLOCK COLOR #220 ELKHORN(LIGHT BROWN COLOR)
D	CMU BLOCK UTILITY BLOCK COMPANY SPLIT FACE BLOCK COLOR #260 CHESTNUT(DARK BROWN COLOR)
E	CMU BLOCK UTILITY BLOCK COMPANY SPLIT FACE BLOCK COLOR #260 CHESTNUT(DARK BROWN COLOR)
F	CMU BLOCK UTILITY BLOCK COMPANY SPLIT FACE BLOCK COLOR #310 FIRE AND ICE(RED COLOR)
G	CMU BLOCK UTILITY BLOCK COMPANY SPLIT FACE BLOCK COLOR #810 DOMINO(BLACK COLOR)
H	STOREFRONT CLEAR ANNOIDIZED ALUMINUM(SILVER COLOR)
I	WALL FINISH COLOR SHERWIN WILLIAMS BASKET BEIGE SW 6143(DARK TAN)
J	WALL FINISH COLOR SHERWIN WILLIAMS WOOL SKEIN SW 6148(LIGHT TAN)
K	WALL FINISH COLOR SHERWIN WILLIAMS PACER WHITE SW 6098(WHITE)
L	WALL FINISH MATERIAL STYLE WALL II FLUTED ARCHITECTURAL 16" WALL PANEL COLOR SHELL GREY (GREY COLOR)
M	WALL FINISH MATERIAL T100 36" ARCHITECTURAL METAL PANNEL COLOR BURGUNDY
N	WALL FINISH MATERIAL T108 36" ARCHITECTURAL METAL PANNEL COLOR MESA GREY (BROWN)
O	WALL FINISH COLOR SHERWIN WILLIAMS COLOR RO MATCH FIRE AND ICE(RED)

REV	DATE	BY	REVISION
1			

GEORGE RAINHART ARCHITECT AND ASSOCIATES PC
2325 SAN PEDRO N.E. SUITE 2-B
ALBUQUERQUE, NEW MEXICO 87110
PHONE (505) 884-9110 FAX (505) 837-9877

PROJECT TITLE
SHOPS-110STCO DEVELOPMENT
N.W.C. OF COORS BYPASS-EAGLE RANCH RD.
ALBUQUERQUE, NEW MEXICO

PROJECT MANAGER
STEPHEN DUNBAR AIA

JOB NO.
SD

DRAWN BY
SD

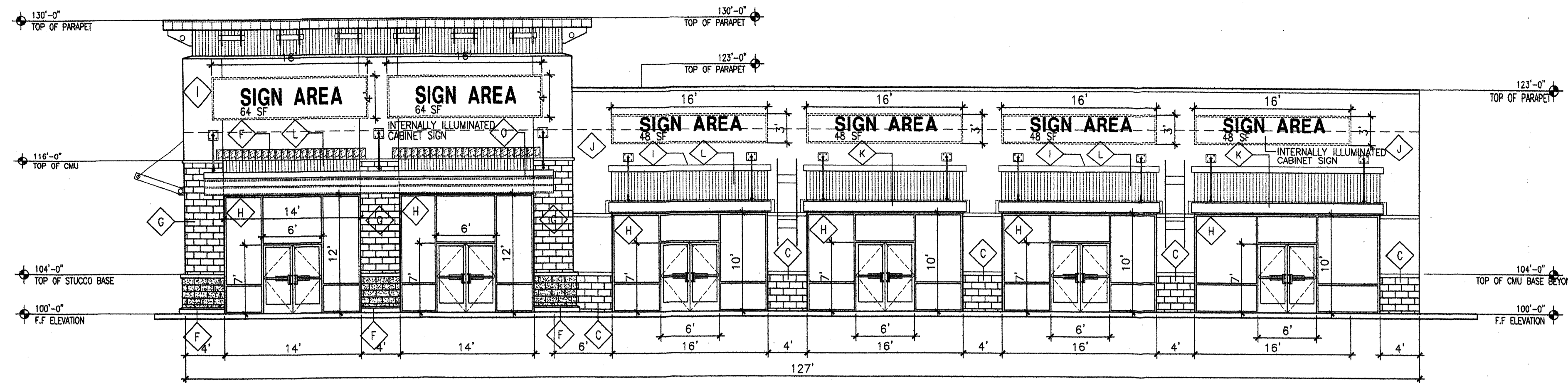
SHEET TITLE
CONCEPT ELEVATIONS

DATE
10/10/04

SCALE
1/8"=1'-0"

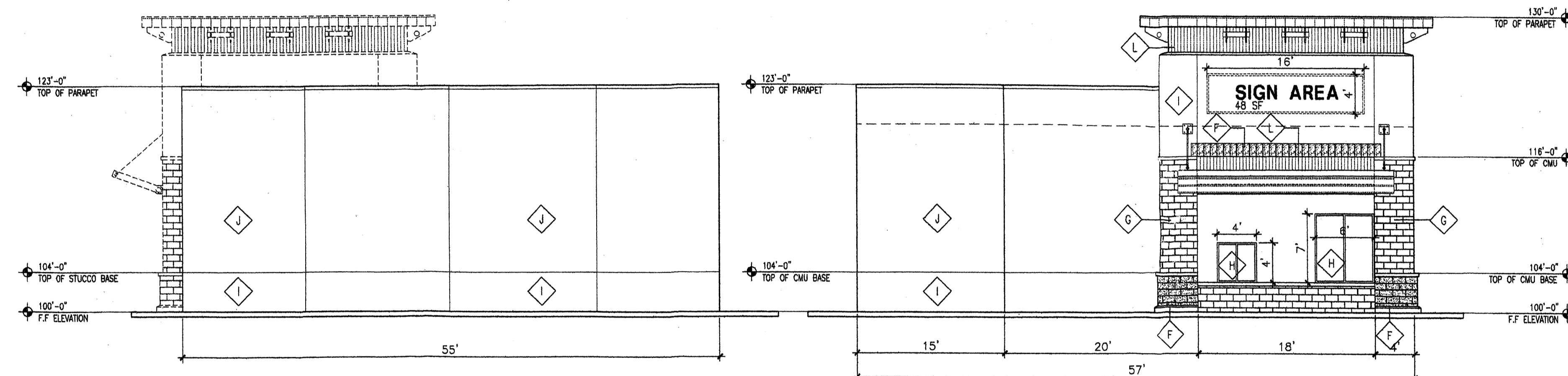
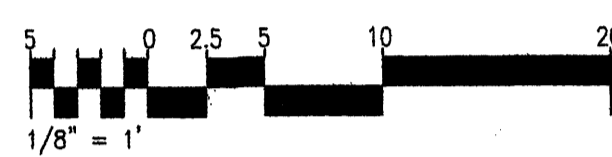
sheet-
A4.5

of-



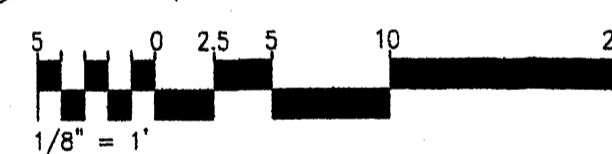
1 SOUTHERN ELEVATION

Scale: 1/8"=1'



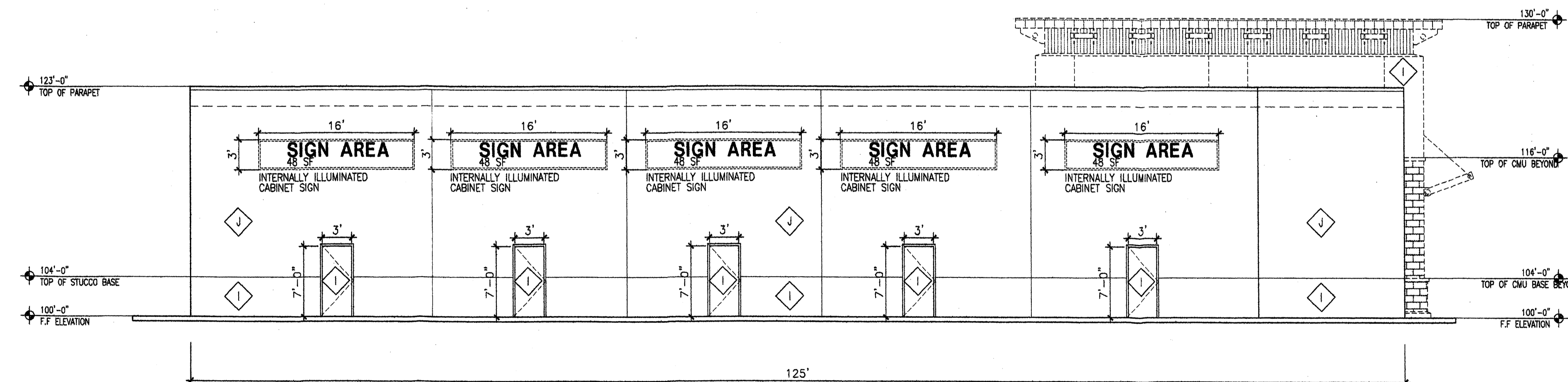
2 EASTERN ELEVATION

Scale: 1/8"=1'



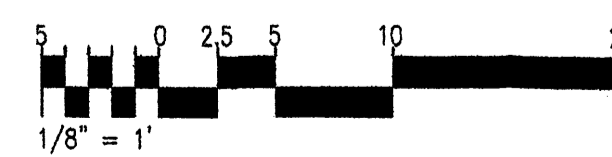
3 WESTERN ELEVATION

Scale: 1/8"=1'



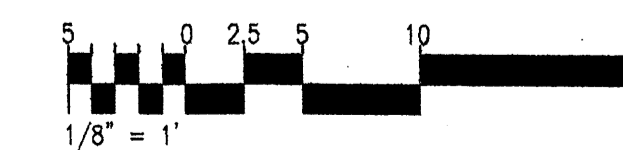
4 NORTHERN ELEVATION

Scale: 1/8"=1'



Keyed Color / Material Schedule

A	CMU BLOCK	UTILITY BLOCK COMPANY SPLIT FACE BLOCK COLOR #110 YBOULDER(GREY COLOR)
B	CMU BLOCK	UTILITY BLOCK COMPANY SPLIT FACE BLOCK COLOR #940 YELLOW SAGE(LIGHT TAN COLOR)
C	CMU BLOCK	UTILITY BLOCK COMPANY SPLIT FACE BLOCK COLOR #220 ELKHORN(LIGHT BROWN COLOR)
D	CMU BLOCK	UTILITY BLOCK COMPANY SPLIT FACE BLOCK COLOR #260 CHESTNUT(DARK BROWN COLOR)
E	CMU BLOCK	UTILITY BLOCK COMPANY SPLIT FACE BLOCK COLOR #260 CHESTNUT(DARK BROWN COLOR)
F	CMU BLOCK	UTILITY BLOCK COMPANY SPLIT FACE BLOCK COLOR #310 FIRE AND ICE(RED COLOR)
G	CMU BLOCK	UTILITY BLOCK COMPANY SPLIT FACE BLOCK COLOR #810 DOMINO(BLACK COLOR)
H	STOREFRONT	CLEAR ANNOZIZED ALUMINUM(SILVER COLOR)
I	WALL FINISH COLOR	SHERWIN WILLIAMS BASKET BEIGE SW 6143(DARK TAN)
J	WALL FINISH COLOR	SHERWIN WILLIAMS WOOL SKEIN SW 6148(LIGHT TAN)
K	WALL FINISH COLOR	SHERWIN WILLIAMS PACER WHITE SW 6088(WHITE)
L	WALL FINISH MATERIAL	STYLE WALL II FLUTED ARCHITECTURAL 16" WALL PANNEL COLOR SHELL GREY (GREY COLOR)
M	WALL FINISH MATERIAL	T100 36" ARCHITECTURAL METAL PANNEL COLOR BURGUNDY
N	WALL FINISH MATERIAL	T100 36" ARCHITECTURAL METAL PANNEL COLOR MESA GREY (BROWN)
O	WALL FINISH COLOR	SHERWIN WILLIAMS COLOR RO MATCH FIRE AND ICE(RED)



REV	DATE	BY	REVISION



GEORGE RAINHART ARCHITECT AND ASSOCIATES PC
 2325 SAN PEDRO NE. SUITE 2-B
 ALBUQUERQUE, NEW MEXICO 87110
 PHONE (505) 884-9110 FAX (505) 837-9877

PROJECT TITLE
SHOPS-2ICOSTCO DEVELOPMENT
 N.W.C. OF COORS BYPASS-EAGLE RANCH RD.
 ALBUQUERQUE NEW MEXICO

PROJECT MANAGER
 STEPHEN DUNBAR, AIA

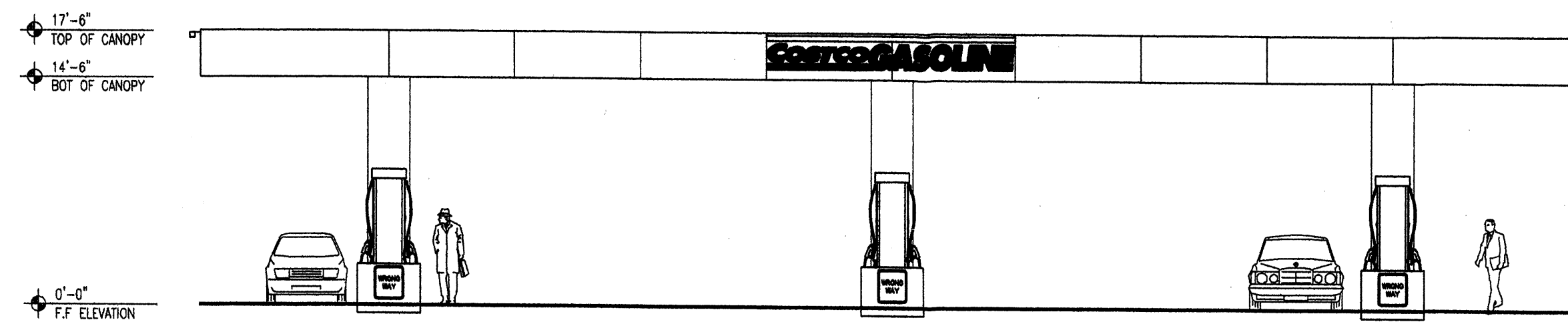
JOB NO.
 DRAWN BY
 SD

SHEET TITLE
CONCEPT ELEVATIONS

DATE:
 10/10/04

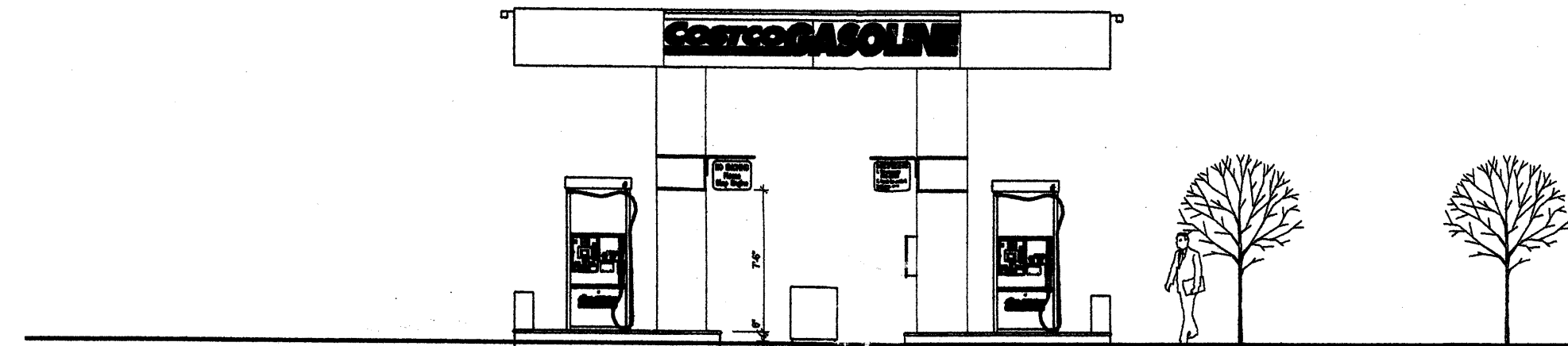
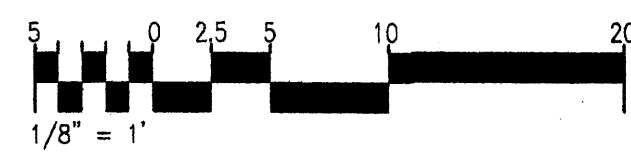
SCALE:
 1/8"=1'-0"

sheet-
A4.6
 of-



1 NORTH AND SOUTH ELEVATION

Scale: 1/8"=1'



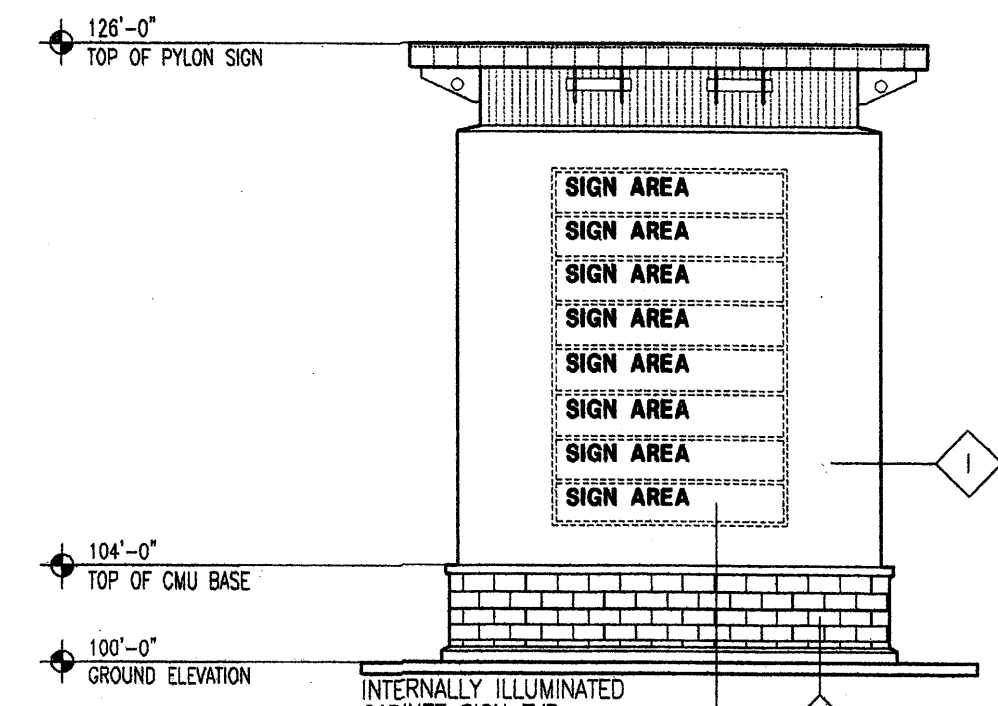
2 EAST AND WEST ELEVATION

Scale: 1/8"=1'



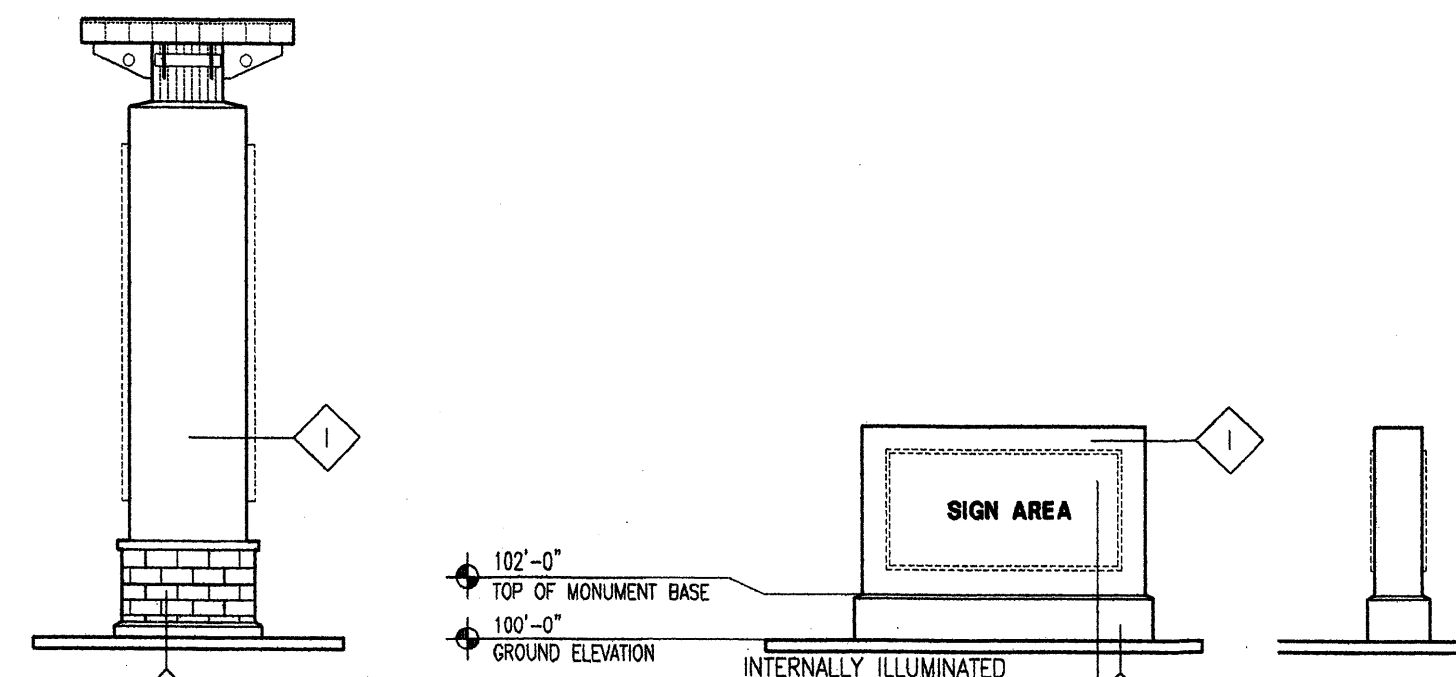
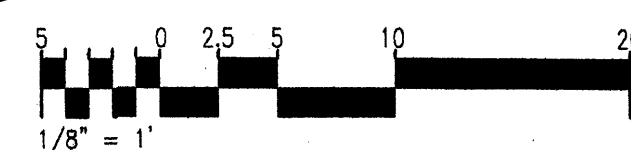
Keyed Color / Material Schedule

◇ A	CMU BLOCK	UTILITY BLOCK COMPANY SPLIT FACE BLOCK COLOR #110 YBOULDER(GREY COLOR)
◇ B	CMU BLOCK	UTILITY BLOCK COMPANY SPLIT FACE BLOCK COLOR #940 YELLOW SAGE(LIGHT TAN COLOR)
◇ C	CMU BLOCK	UTILITY BLOCK COMPANY SPLIT FACE BLOCK COLOR #220 ELKHORN(LIGHT BROWN COLOR)
◇ D	CMU BLOCK	UTILITY BLOCK COMPANY SPLIT FACE BLOCK COLOR #260 CHESTNUT(DARK BROWN COLOR)
◇ E	CMU BLOCK	UTILITY BLOCK COMPANY SPLIT FACE BLOCK COLOR #260 CHESTNUT(DARK BROWN COLOR)
◇ F	CMU BLOCK	UTILITY BLOCK COMPANY SPLIT FACE BLOCK COLOR #310 FIRE AND ICE(RED COLOR)
◇ G	CMU BLOCK	UTILITY BLOCK COMPANY SPLIT FACE BLOCK COLOR #810 DOMINO(BLACK COLOR)
◇ H	STOREFRONT	CLEAR ANNOXIDIZED ALUMINUM(SILVER COLOR)
◇ I	WALL FINISH COLOR	SHERWIN WILLIAMS BASKET BEIGE SW 6143
◇ J	WALL FINISH COLOR	SHERWIN WILLIAMS WOOL SKEIN SW 6148
◇ K	WALL FINISH COLOR MISC METAL	SHERWIN WILLIAMS PACER WHITE SW 6098
◇ L	WALL FINISH MATERIAL	STYLE WALL II FLUTED ARCHITECTURAL 16" WALL PANNEL COLOR SHELL GREY (GREY COLOR)
◇ M	WALL FINISH MATERIAL	T10D 36" ARCHITECTURAL METAL PANNEL COLOR BURGUNDY
◇ N	WALL FINISH MATERIAL	T10B 36" ARCHITECTURAL METAL PANNEL COLOR MESA GREY (BROWN)



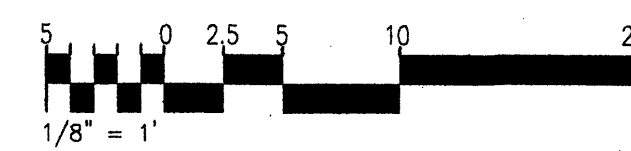
3 PYLON SIGN

Scale: 1/8"=1'

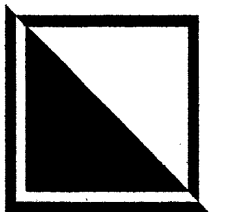


4 MONUMENT SIGN

Scale: 1/8"=1'



REV	DATE	BY	REVISION
6			



GEORGE RAINHART ARCHITECT AND ASSOCIATES PC
 2325 SAN PEDRO NE. SUITE 2-B
 ALBUQUERQUE, NEW MEXICO 87110
 PHONE (505) 884-9110 FAX (505) 837-9877

PROJECT TITLE
GAS CANOPY - SIGNAGE (COSTCO DEVELOPMENT)

N.W.C. OF COORS BYPASS-EAGLE RANCH RD.
 ALBUQUERQUE, NEW MEXICO

PROJECT MANAGER
 STEPHEN DUNBAR AIA

JOB NO.

DRAWN BY:
 SD

SHEET TITLE
CONCEPT ELEVATIONS

DATE:

10/10/04

SCALE:

1/8"=1'-0"

sheet-

A4.7

of