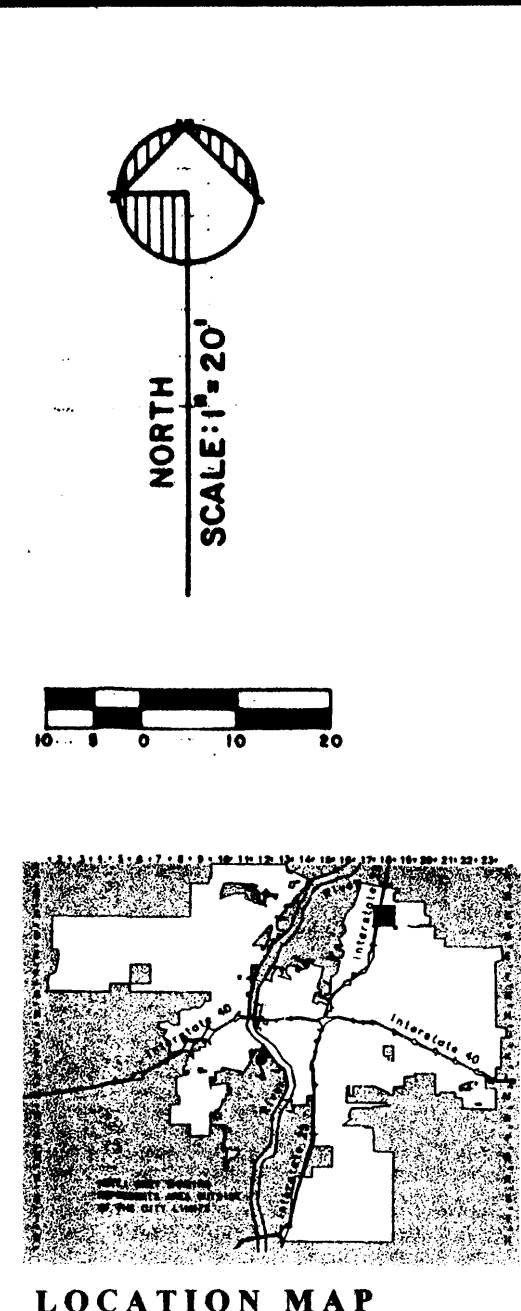
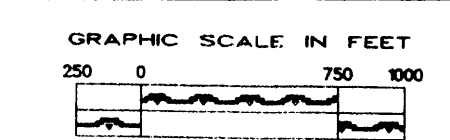
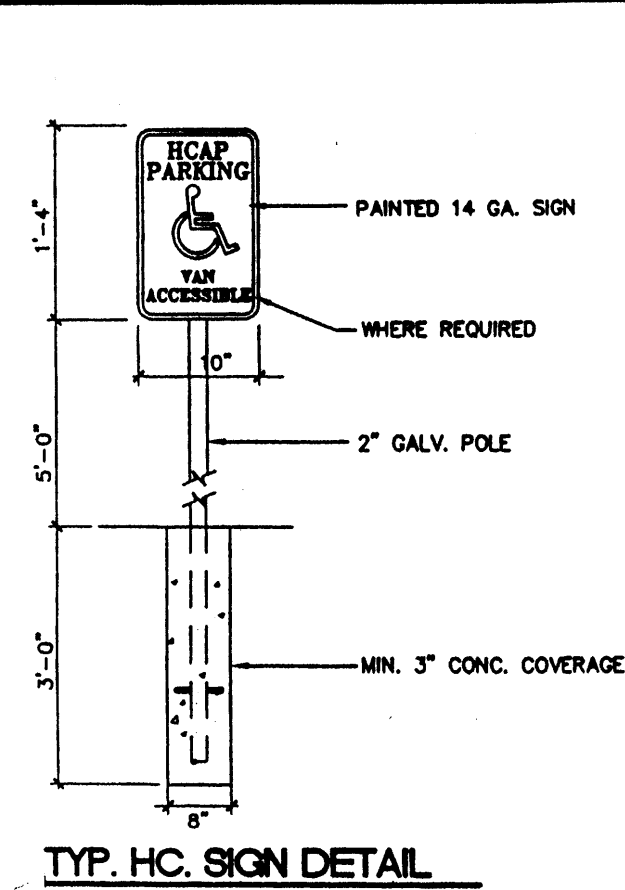


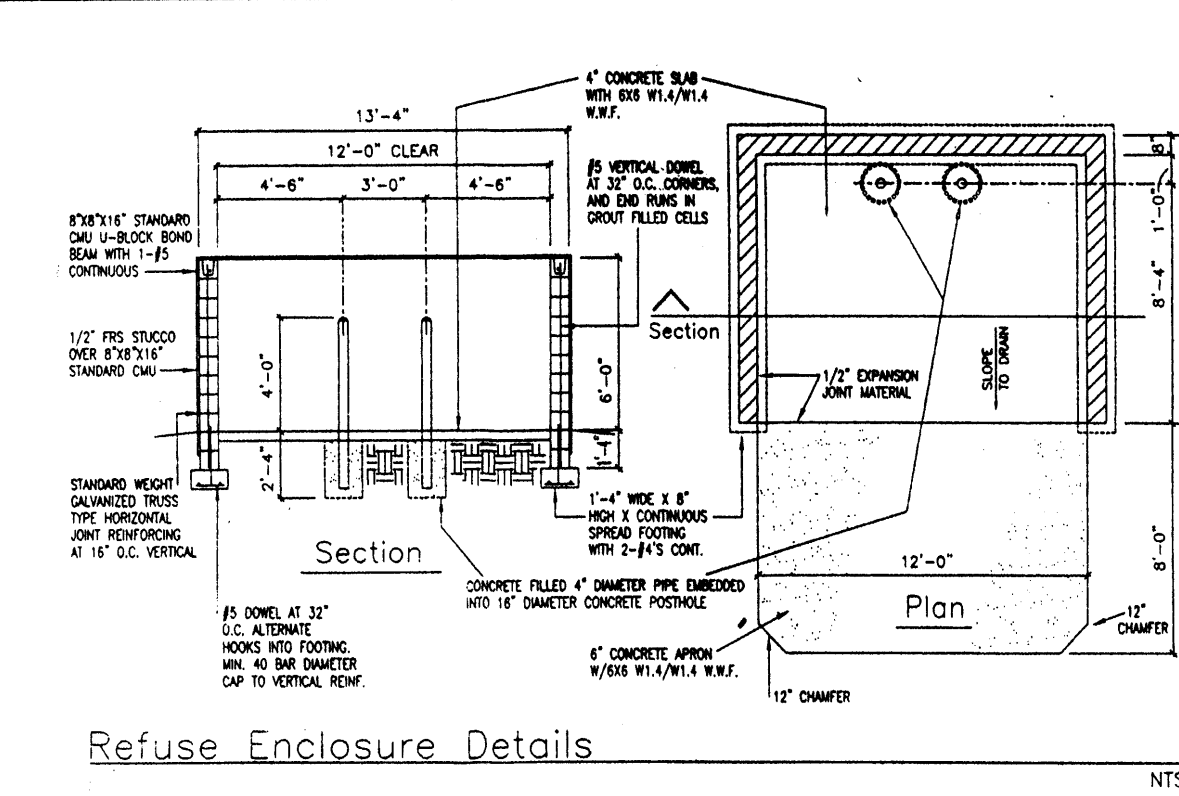
VICINITY MAP **C-18-Z**



LOCATION MAP



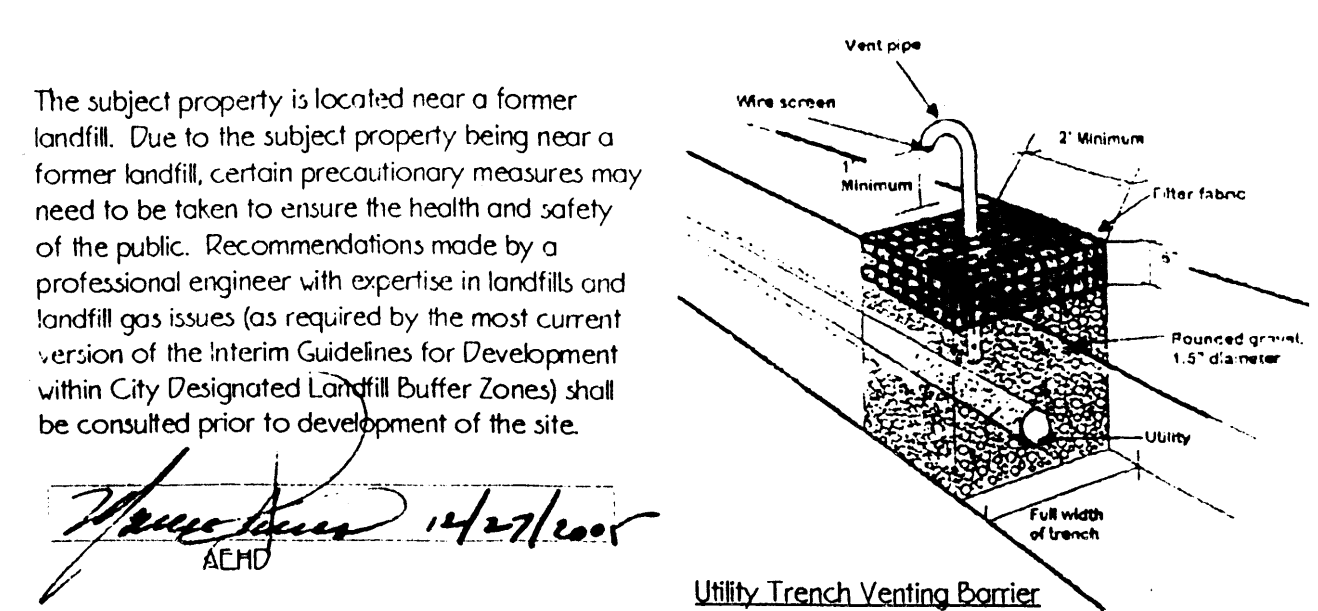
TYP. H.C. SIGN DETAIL
SCALE: 1" = 1'-0"



Refuse Enclosure Details
N.T.S.

Detail Notes

- Utility trench venting barriers shall consist of a gravel plug that measures a minimum of 2-feet along the length of the trench, and extends the full width and the full height of the trench.
- The gravel shall be rounded (not crushed) 1.5-inch diameter rock.
- Seven-ounce non-woven filter fabric should be placed over the gravel and overlap the sides of the gravel plug by a minimum of 6-inches.
- Landscaping material (gravel, bark, etc) should be placed over the filter fabric.
- A 2-inch diameter perforated vent pipe (UV resistant PVC or galvanized metal) shall extend to approximately the mid-point of the gravel barrier.
- Below grade, perforations shall be 1/2-inch diameter (maximum) on 6-inch centers all around the pipe at approximately 120°.
- The vent pipe shall terminate in a gooseneck that opens between 1 and 3 feet above grade.
- The gooseneck pipe opening should be covered with wire screen.
- The utility line should be placed on a bed of at least 2 inches of gravel at the bottom of the trench.
- The locations (B) for the utility trench venting barriers are indicated on sheet 1 of the site plan.
- A MINIMUM OF ONE SET OF FOUR UTILITIES SHALL BE PROVIDED

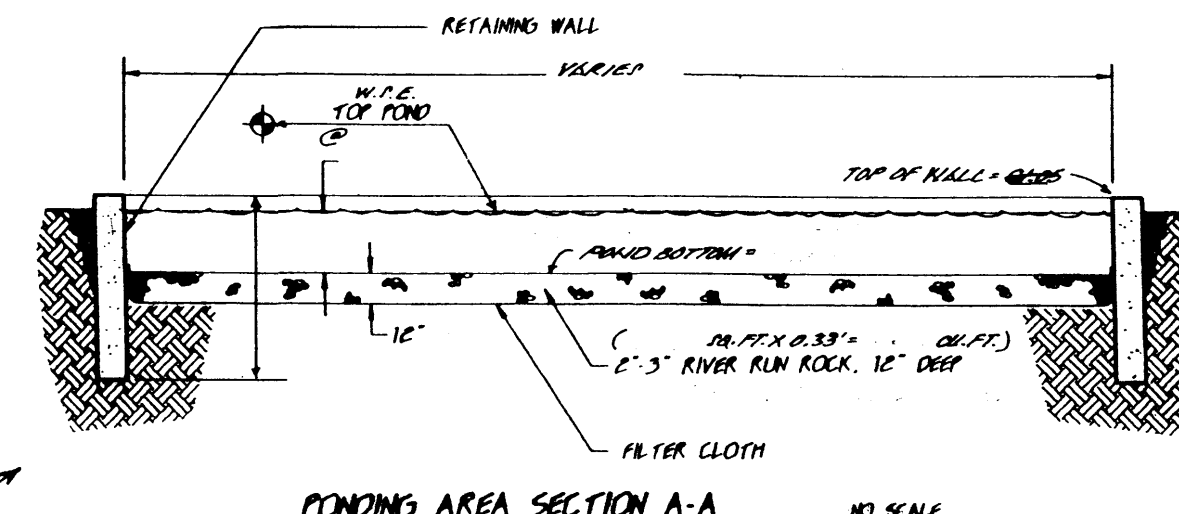


Utility Trench Venting Barrier

NOTES: (THIS SHEET)

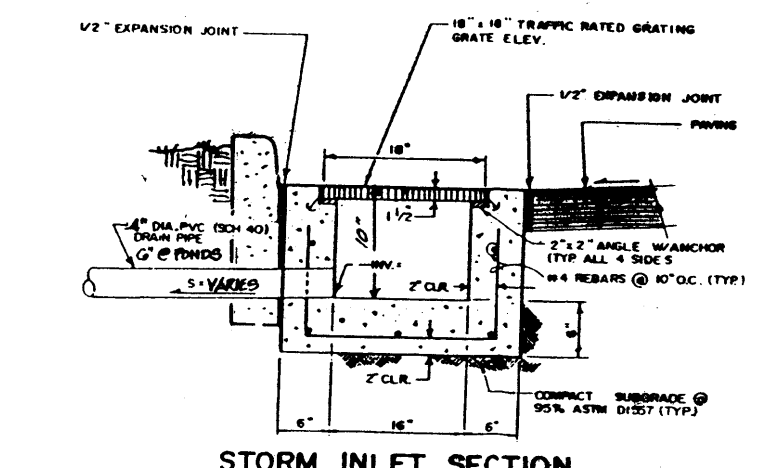
- LANDSCAPING SHALL BE PER "PLANTING RESTRICTIONS APPROACH":
 - MEDIUM AND LOW WATER USE TREES/PLANTS 80% (MINIMUM) OF LANDSCAPED AREA.
 - WATER REQUIREMENTS, (H) = HIGH, (M) = MEDIUM, (L) = LOW, AS NOTED ON SCHEDULE IS PER ALBUQUERQUE PLANT LIST.
- GENERAL:
 - LANDSCAPED AREAS: SHALL BE PREPARED WITH REQUIRED AND SUITABLE AMENDMENTS FOR PLANTING AND MAINTAINING SOD, TREES, SHRUBS, ETC. EXCAVATE TO NATURAL SUBSOIL LEVEL. FILL WITH CLEAN SUBSOIL AND 4" TOPSOIL (MINIMUM) CONTAINING HUMUS, (FREE OF DEBRIS, WEEDS, FIELD GRASSES, ETC.).
 - TREES: SHALL BE 2" O CALIPER (MINIMUM) AT 2'-0" ABOVE GROUND AND SHALL BE 10'-0" (MINIMUM) IN HEIGHT.
 - PLANTS/SHRUBS: SHALL BE 5 GALLON (MINIMUM).
 - GROUND COVER: SHALL BE ESTABLISHED WITHIN ONE (1) YEAR OF PLANTING (MAXIMUM). SOD, PLANTINGS, SHREDDED BARK, RIVER RUN GRAVEL SHALL BE OVER SOIL TREATED FOR WEED CONTROL.
 - IRRIGATION: UNDERGROUND SPRINKLER AND DRIP SYSTEM AS FOLLOWS: (CONTRACTOR SHALL SUBMIT PLAN AND SPECIFICATIONS FOR SYSTEM PROPOSED):
 - VALVE BOXES: PRESSURE LINES: SCHEDULE 40 PVC. LATERAL AND DISTRIBUTION LINES: CLASS 200 PVC HEADS: POP-UP TYPE INSTALLED IN LAWN AREAS. CONTROL WIRE: SOLID COPPER, UL APPROVED.
 - NOTE: OWNER(S) SHALL MAINTAIN LANDSCAPING
- AREA:

1	1,200 SF
2	3,130 SF
3	— SF
4	— SF
5	— SF
TOTAL	4,330 SF.

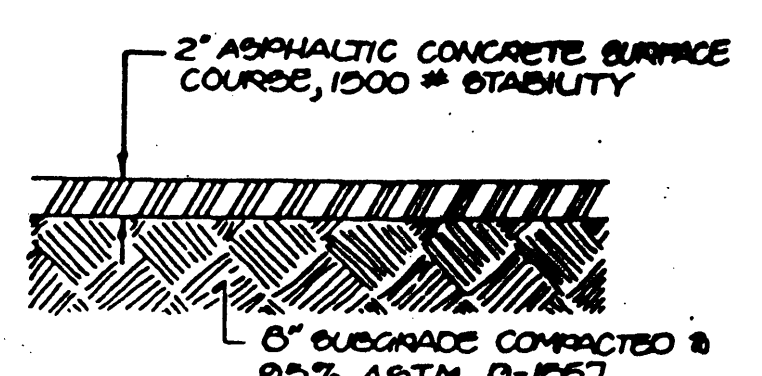


FONDING AREA SECTION A-A
N.T.S.

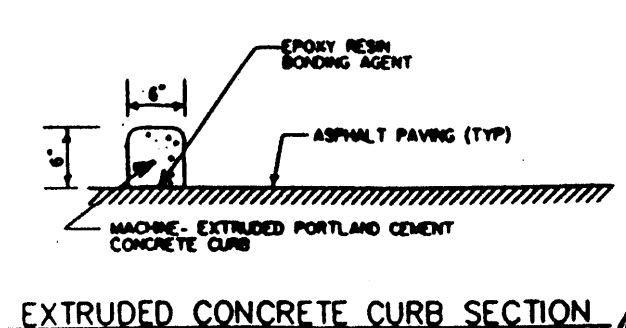
NOTE: REFER TO "GRADING AND DRAINAGE PLAN" FOR DETAILS



STORM INLET SECTION
N.T.S.

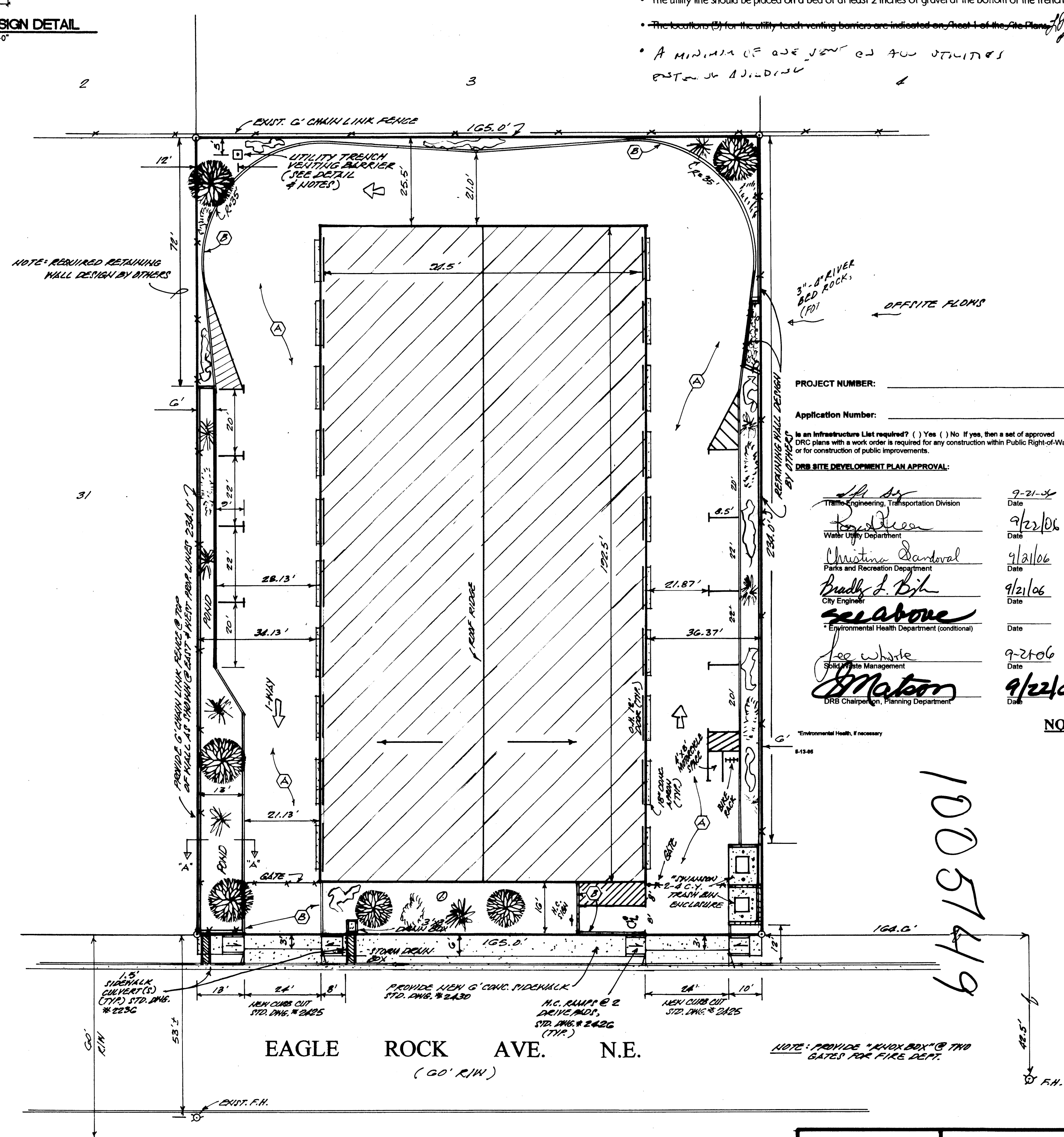


TYPICAL PAVEMENT SECTION
SCALE: 1" = 1'-0"



EXTRUDED CONCRETE CURB SECTION
SCALE: 1" = 1'-0"

REQ. LANDSCAPE = 3,063.0 SQ. FT. (15%)
PROVIDED LANDSCAPE = 4,330.0 SQ. FT.



EAGLE ROCK AVE. N.E.
(60' R.W.)

REQUIRED PARKING: BUILDING AREA = 18,191.3 SQ. FT.
ZONED: SU-2/141
2000 = 9.0 SPACES
9.0 SPACES PROVIDED

PROJECT NUMBER: _____
Application Number: _____

Is an Infrastructure List required? () Yes () No. If yes, then a set of approved DRG plans with a work order is required for any construction within Public Right-of-Way or for construction of public improvements.

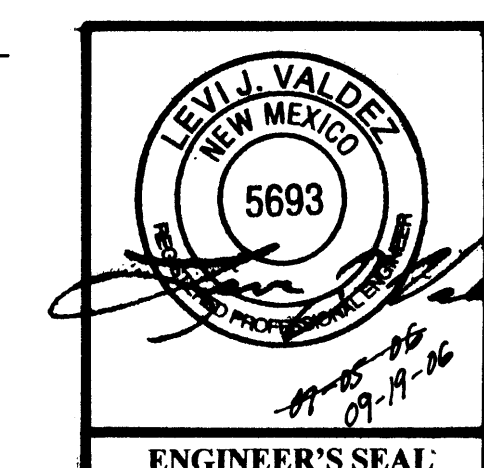
DRB SITE DEVELOPMENT PLAN APPROVAL:

Thomas Engineering, Transportation Division	9-21-06
Water Utility Department	9/22/06
Christina Dandoval Parks and Recreation Department	9/21/06
Bradley D. Bish City Engineer	9/21/06
See Above Environmental Health Department (conditional)	
Joe White Solid Waste Management	9-21-06
Matthew DRB Chairperson, Planning Department	9/22/06

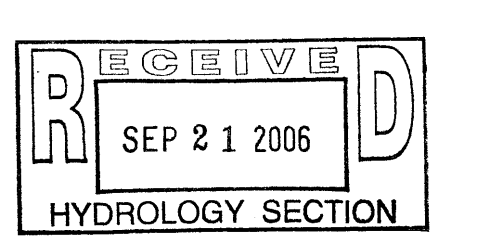
NOTE: LANDSCAPING PLAN SHALL BE IN COMPLIANCE WITH THE CITY OF ALBUQUERQUE WATER CONSERVATION, POLLUTION, AND WASTE WATER ORDINANCE.

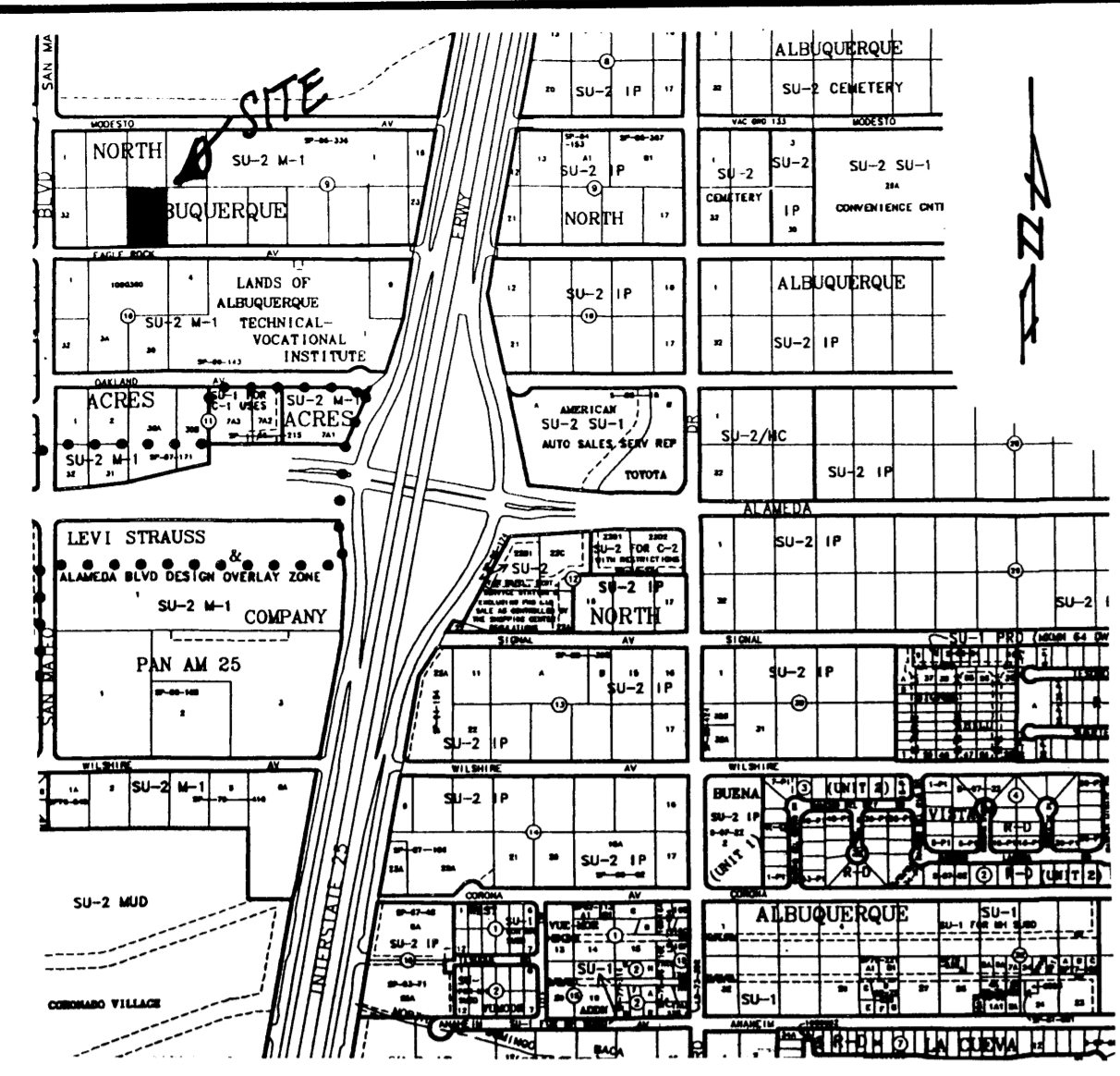
- LEGEND:**
- LEISOURA ARB (PAVILION PLUM)
 - ARTEMISIA CANA (SILVER CHALK)
 - YUCCA PENDULA
 - PURPLE ICE PLANT
 - * GRAVEL MULCH (3/4" SANTA FE BROWN)
 - GRASS COVER

SITE/LANDSCAPE PLAN

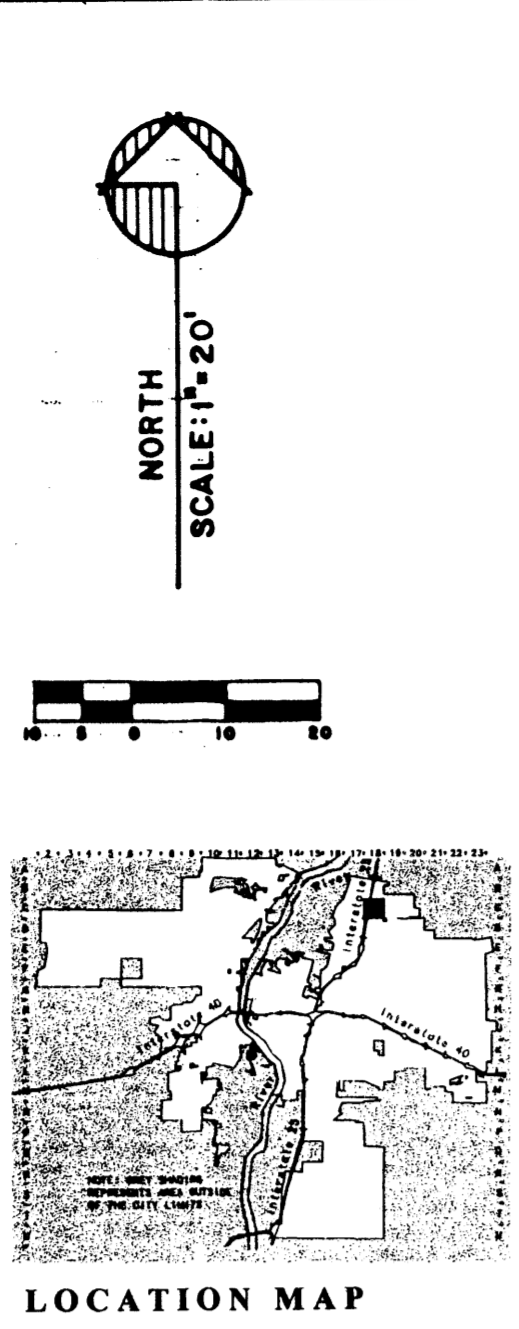
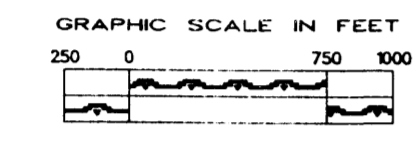


A PROPOSED PLAN FOR
LOT THIRTY (30)
BLOCK 9, TRACT 'A', UNIT 'B'
NORTH ALBUQUERQUE ACRES
ALBUQUERQUE, NEW MEXICO
MAY, 2006

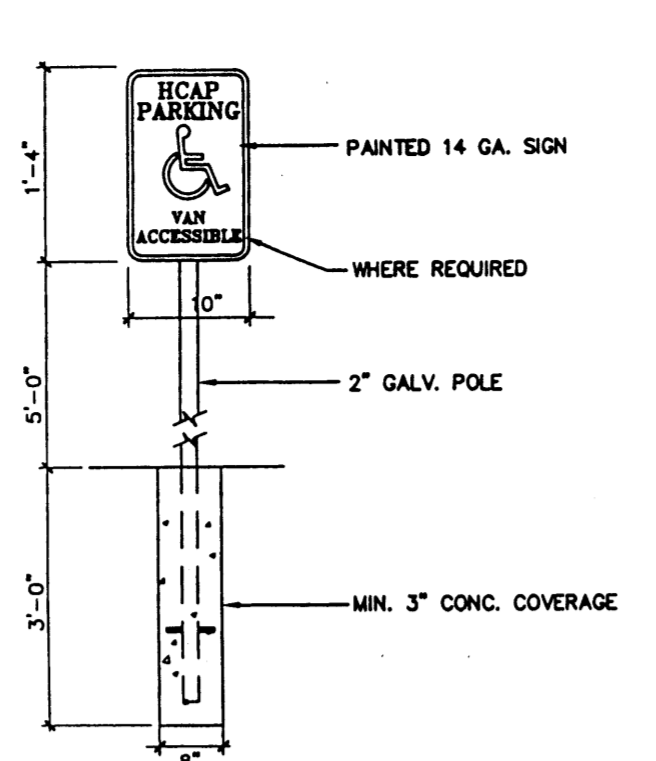




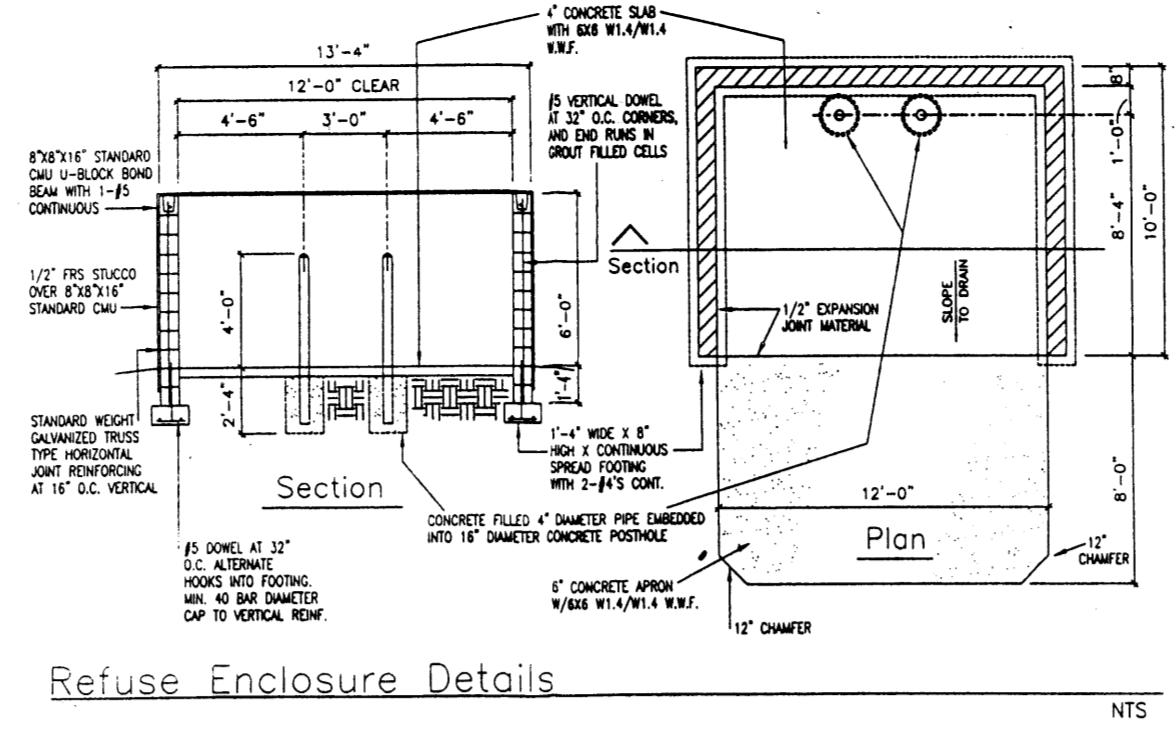
VICINITY MAP **C-18-Z**



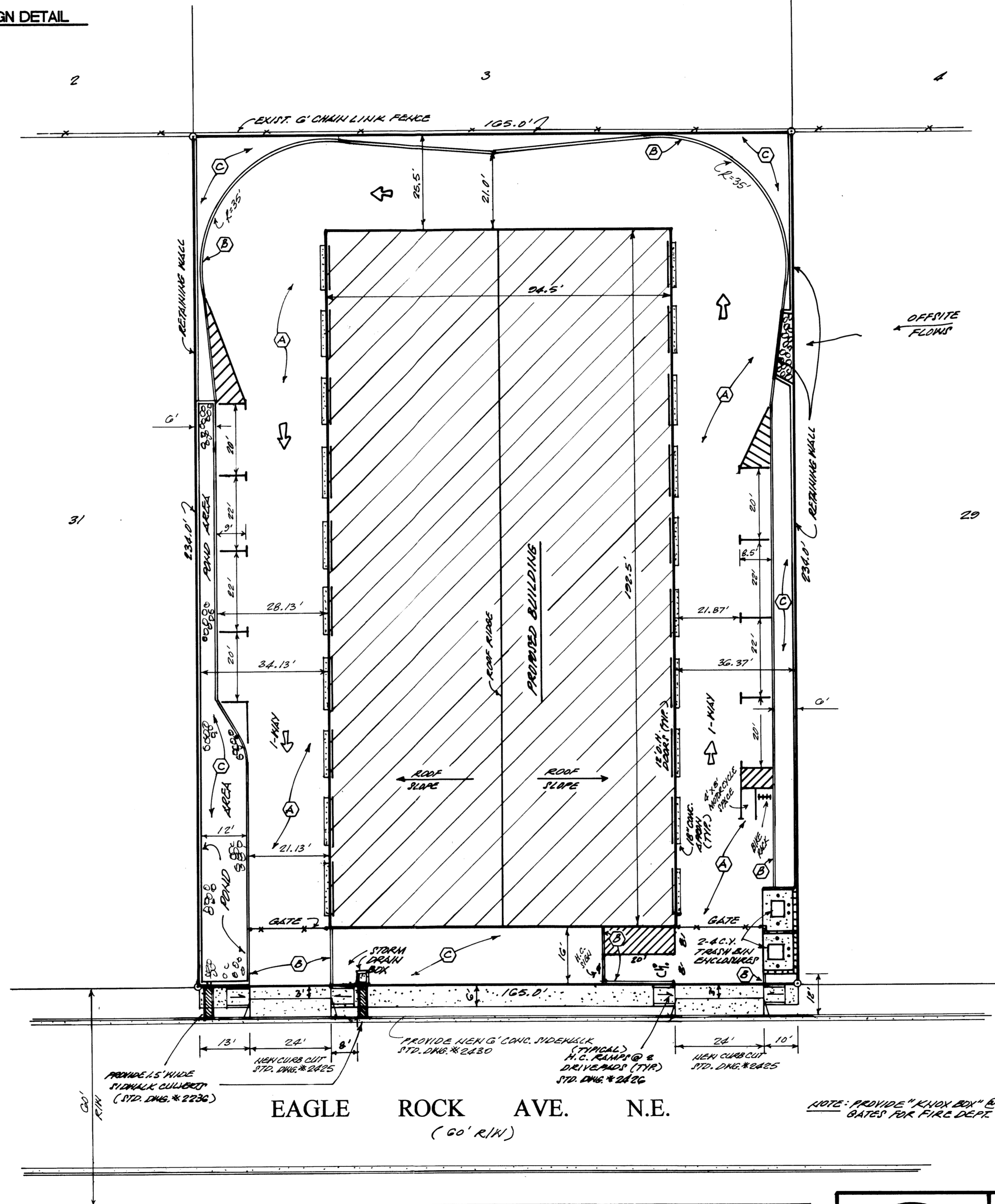
LOCATION MAP



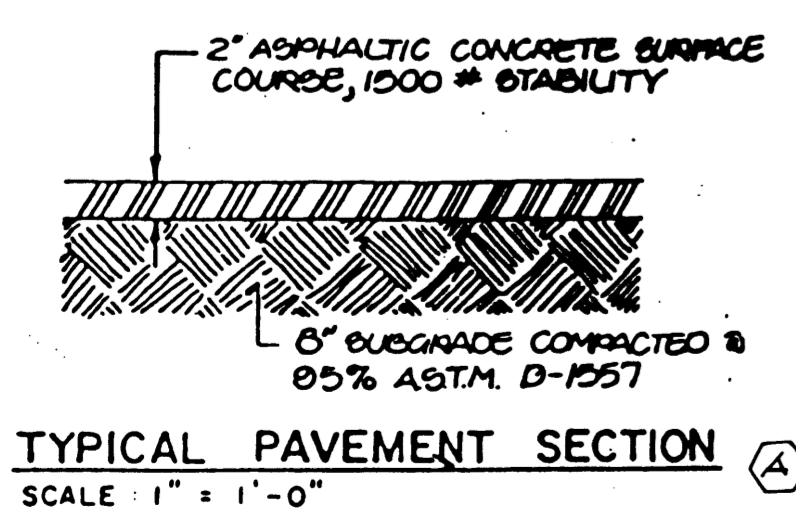
TYP. HC. SIGN DETAIL
SCALE: 1" = 1'-0"



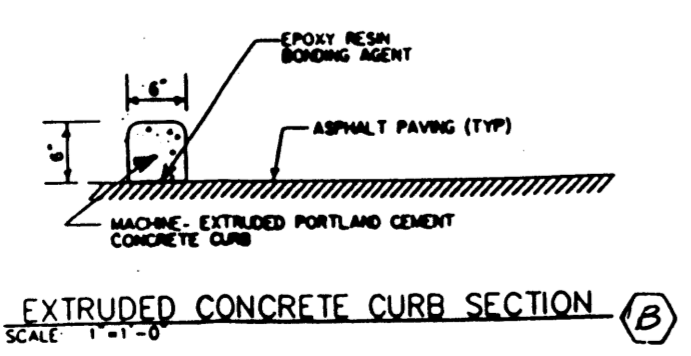
Refuse Enclosure Details



REQUIRED PARKING: (ZONED: SU-2(M))
 BUILDING AREA = 18,191.3 SQ. FT. ÷ 2000 = 9.0 SPACES (REQ.)
 9.0 SPACES (PROVIDED)

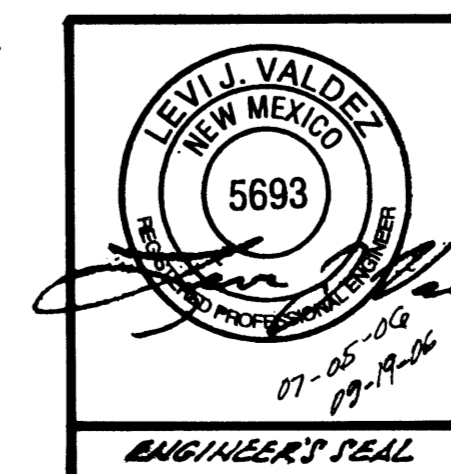


TYPICAL PAVEMENT SECTION
SCALE: 1" = 1'-0"



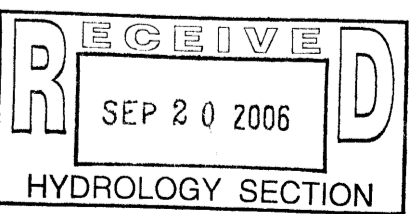
EXTRUDED CONCRETE CURB SECTION
SCALE: 1" = 1'-0"

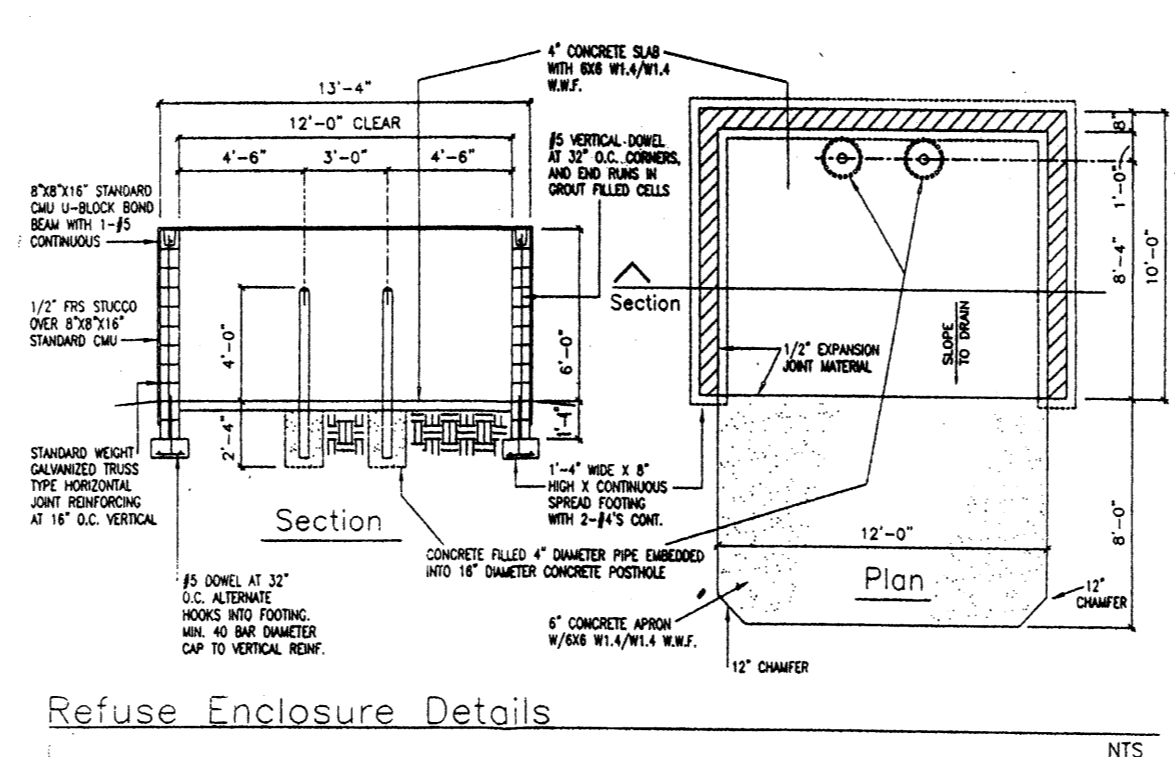
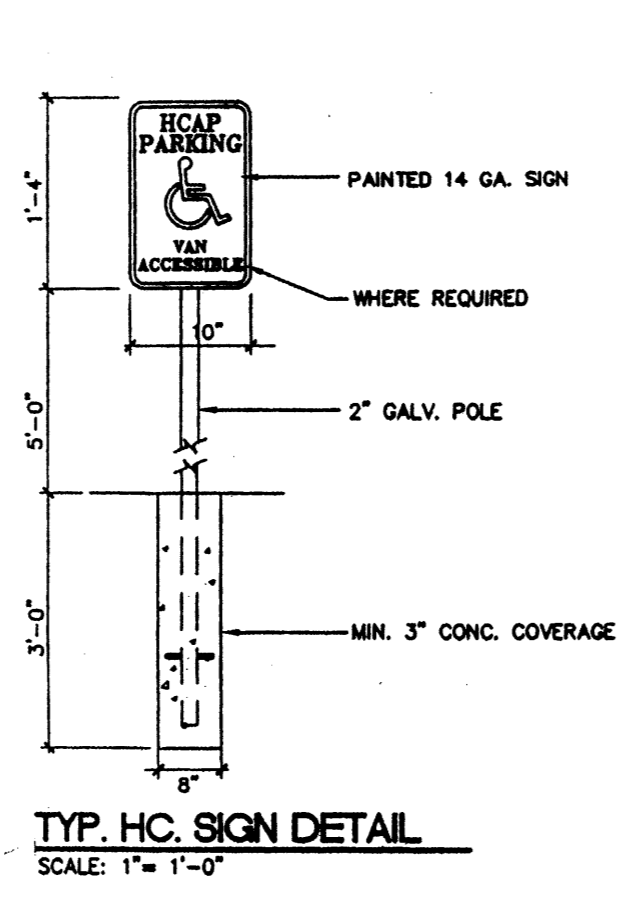
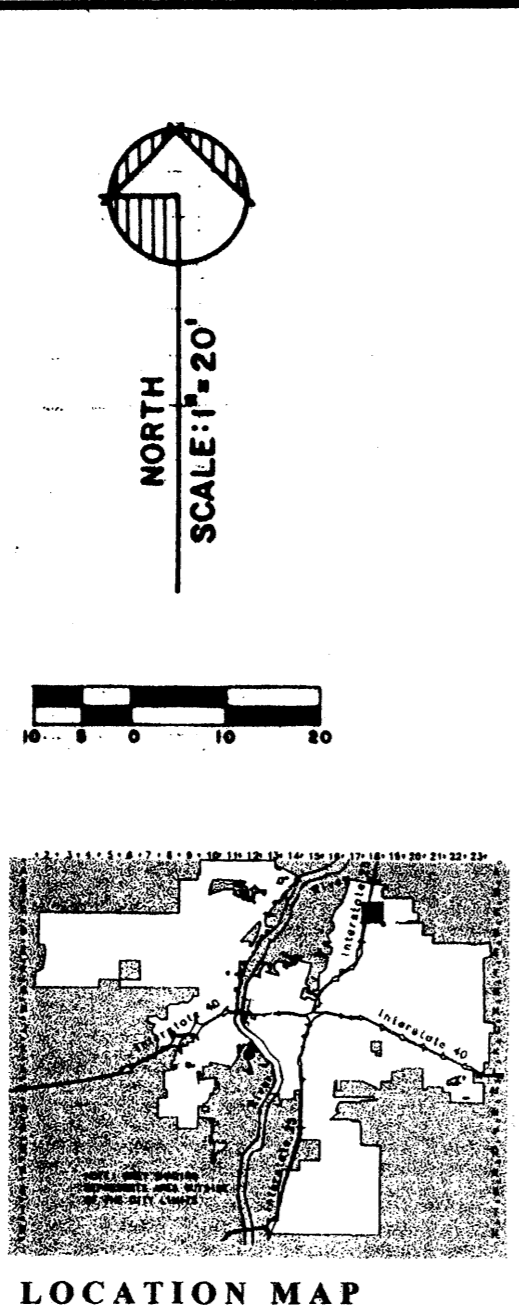
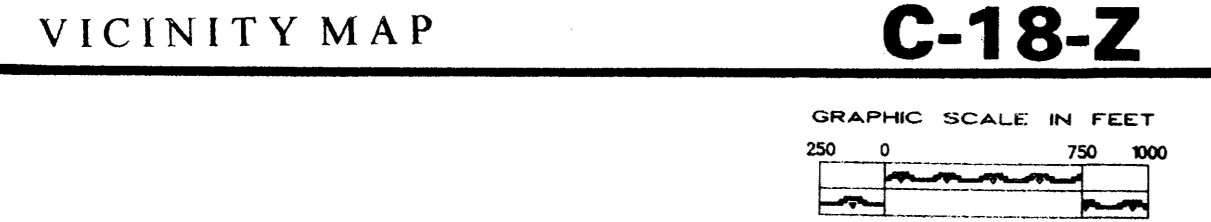
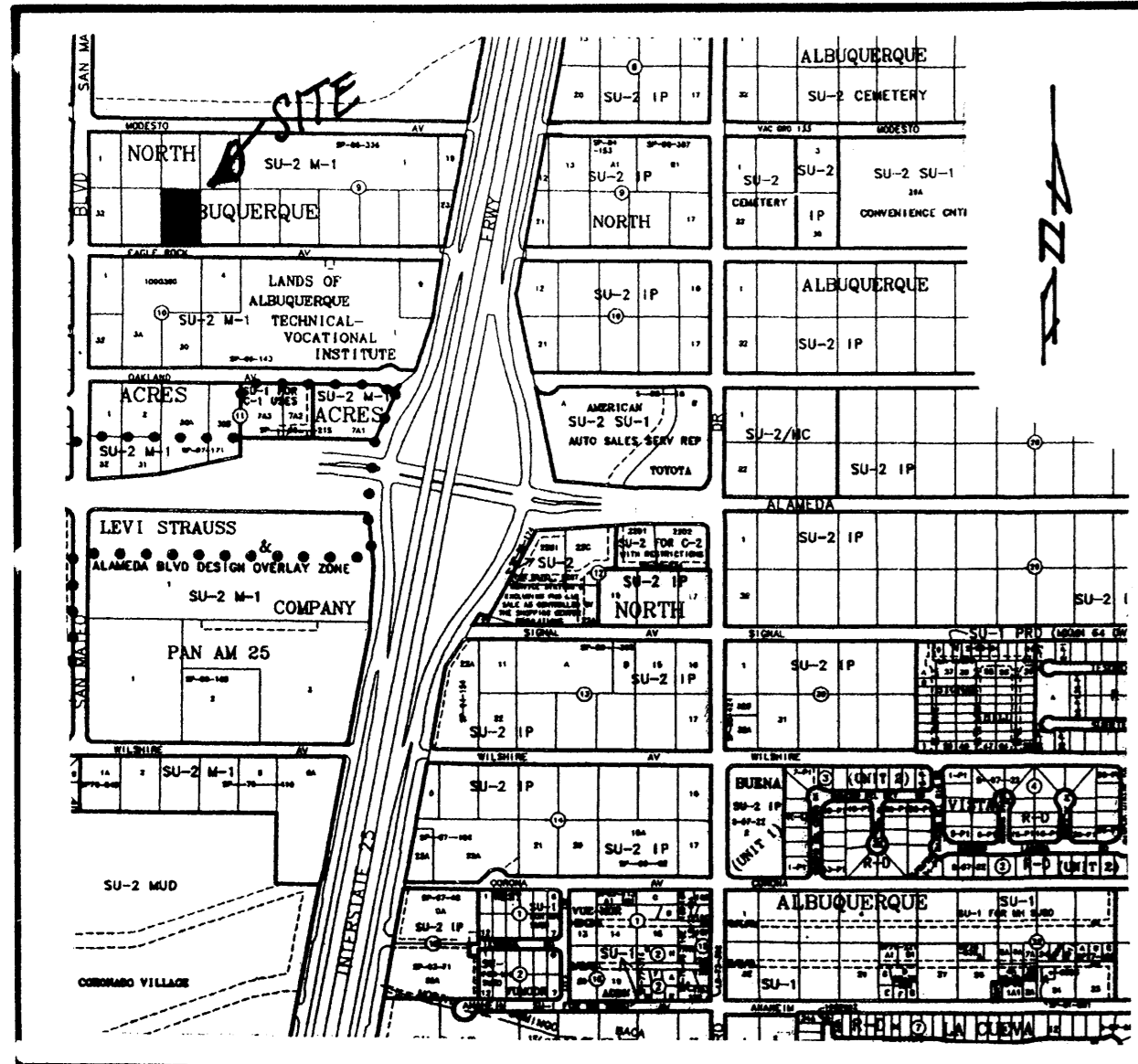
(C) LANDSCAPE AREA



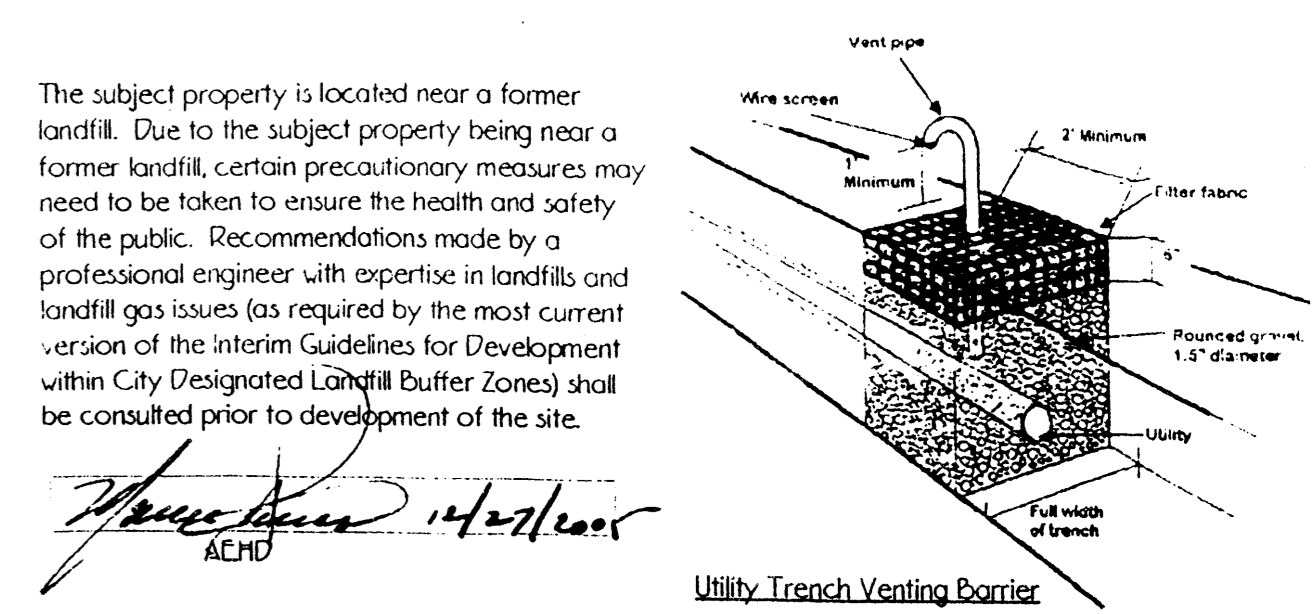
TRAFFIC CIRCULATION LAYOUT

A PROPOSED PLAN
 FOR
 LOT THIRTY (30)
 BLOCK 9, TRACT 'A', UNIT 'B'
 NORTH ALBUQUERQUE ACRES
 ALBUQUERQUE, NEW MEXICO
 MAY, 2006

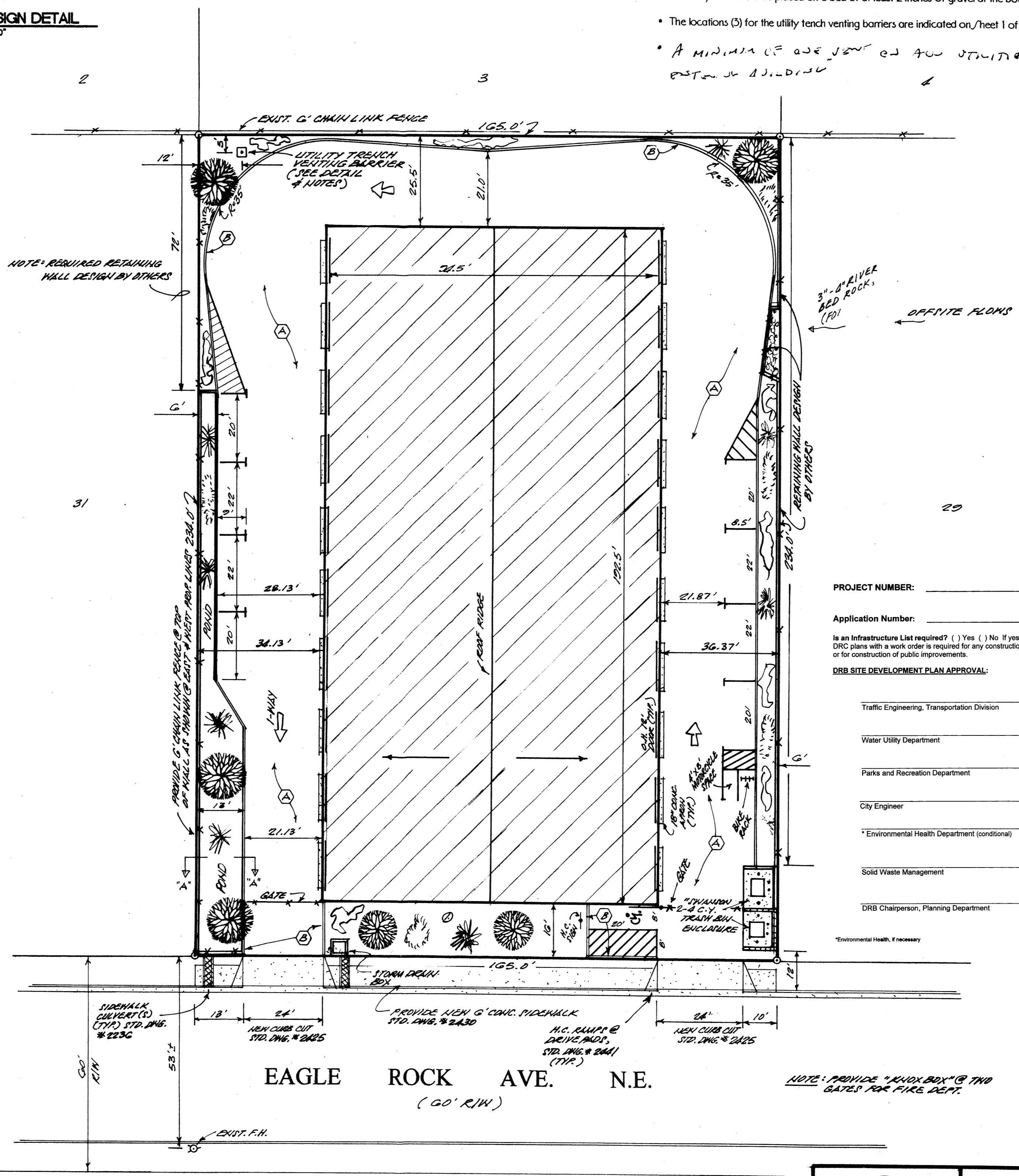
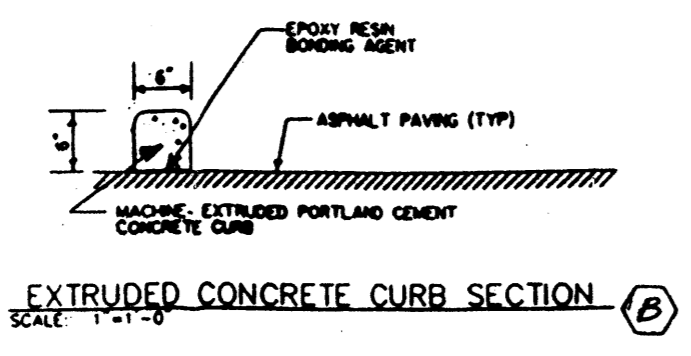
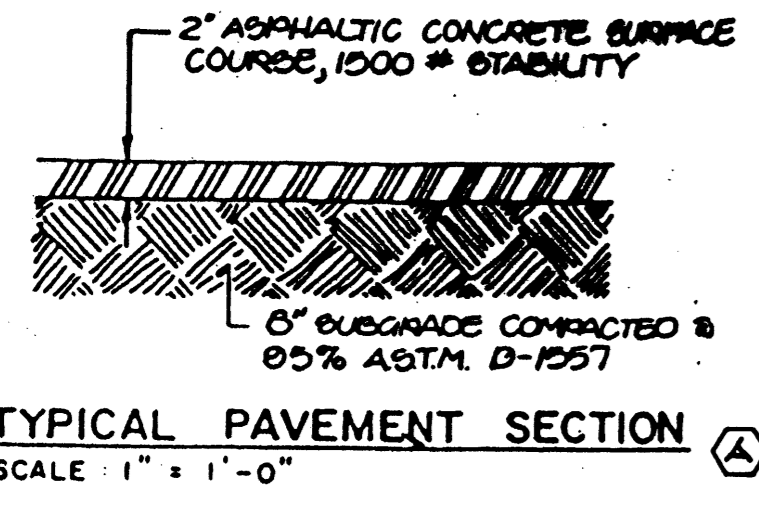
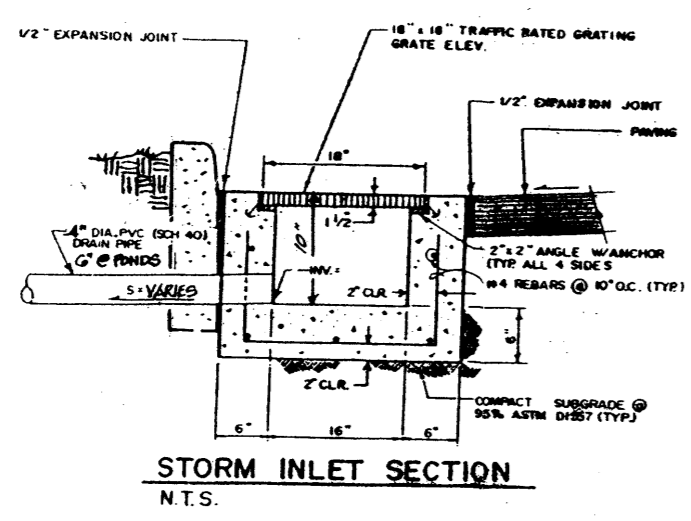
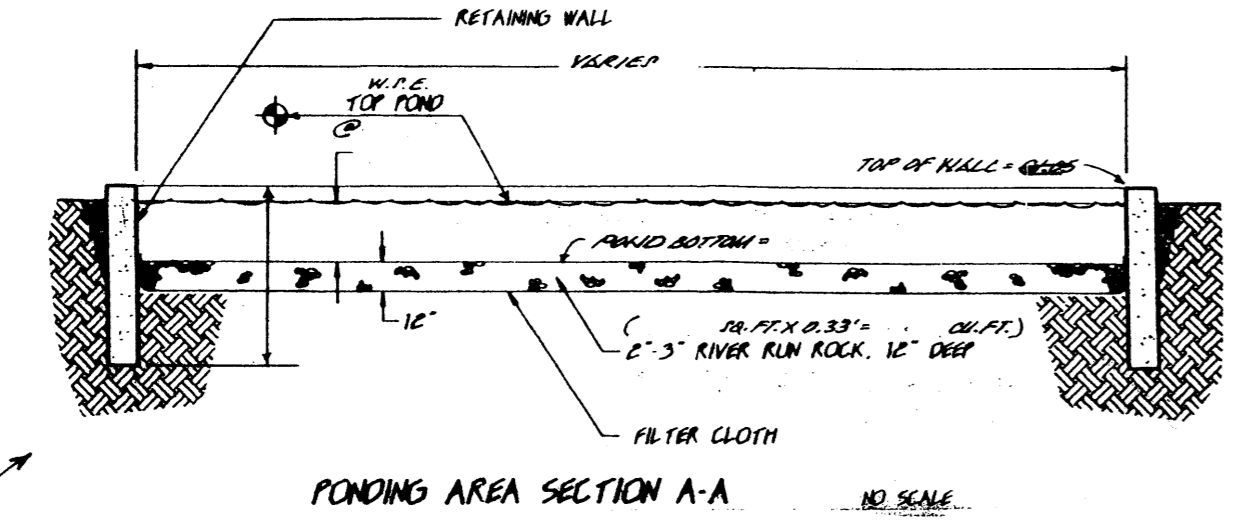




- Detail Notes**
- Utility trench venting barriers shall consist of a gravel plug that measures a minimum of 2-feet along the length of the trench, and extends the full width and the full height of the trench.
 - The gravel shall be rounded (not crushed) 1.5-inch diameter rock.
 - Even-ounce non-woven filter fabric should be placed over the gravel and overlap the sides of the gravel plug by a minimum of 6-inches.
 - Landscaping material (gravel, bark, etc) should be placed over the filter fabric.
 - A 2-inch diameter perforated vent pipe (UV resistant PVC or galvanized metal) shall extend to approximately the mid-point of the gravel barrier.
 - Below grade, perforations shall be 1/2-inch diameter (maximum) on 6-inch centers all around the pipe at approximately 120°.
 - The vent pipe shall terminate in a gooseneck that opens between 1 and 3 feet above grade.
 - The gooseneck pipe opening should be covered with wire screen.
 - The utility line should be placed on a bed of at least 2 inches of gravel at the bottom of the trench.
 - The locations (S) for the utility trench venting barriers are indicated on sheet 1 of the site Plans.
- A MINIMUM OF ONE SET OF TWO UTILITIES SHALL BE PROVIDED*



- NOTES: (THIS SHEET)**
- LANDSCAPING SHALL BE PER "PLANTING RESTRICTIONS APPROACH":
 - MEDIUM AND LOW WATER USE TREES/PLANTS 80% (MINIMUM) OF LANDSCAPED AREA.
 - WATER REQUIREMENTS, (H)= HIGH, (M)= MEDIUM, (L)= LOW, AS NOTED ON SCHEDULE IS PER ALBUQUERQUE PLANT LIST.
 - GENERAL:
 - LANDSCAPED AREAS:** SHALL BE PREPARED WITH REQUIRED AND SUITABLE AMENDMENTS FOR PLANTING AND MAINTAINING SOIL, TREES, SHRUBS, ETC. EXCAVATE TO NATURAL SUBSOIL LEVEL. FILL WITH CLEAN SUBSOIL AND 4" TOPSOIL (MINIMUM) CONTAINING HUMUS, (FREE OF DEBRIS, WEEDS, FIELD GRASSES, ETC.).
 - TREES:** SHALL BE 2" Ø CALIPER (MINIMUM) AT 2'-0" ABOVE GROUND AND SHALL BE 10'-0" (MINIMUM) IN HEIGHT.
 - PLANTS/SHRUBS:** SHALL BE 5 GALLON (MINIMUM).
 - GROUND COVER:** SHALL BE ESTABLISHED WITHIN ONE (1) YEAR OF PLANTING (MAXIMUM). SOIL, PLANTINGS, SHREDDED BARK, RIVER RUN GRAVEL SHALL BE OVER SOIL TREATED FOR WEED CONTROL.
 - IRRIGATION:** UNDERGROUND SPRINKLER AND DRIP SYSTEM AS FOLLOWS: (CONTRACTOR SHALL SUBMIT PLAN AND SPECIFICATIONS FOR SYSTEM PROPOSED).
 - VALVE BOXES: PRESSURE LINES: SCHEDULE 40 PVC. LATERAL AND DISTRIBUTION LINES: CLASS 200 PVC HEADS: POP-UP TYPE INSTALLED IN LAWN AREAS CONTROL WIRE: SOLID COPPER, UL APPROVED
- NOTE: OWNER(S) SHALL MAINTAIN LANDSCAPING**
- AREA:**
- | | |
|--------------|------------------|
| 1 | 1,200 SF |
| 2 | 3,130 SF |
| 3 | — SF |
| 4 | — SF |
| 5 | — SF |
| TOTAL | 4,330 SF. |



PROJECT NUMBER: _____
Application Number: _____

Is an Infrastructure List required? () Yes () No. If yes, then a set of approved DHC plans with a work order is required for any construction within Public Right-of-Way or for construction of public improvements.

DRB SITE DEVELOPMENT PLAN APPROVAL:

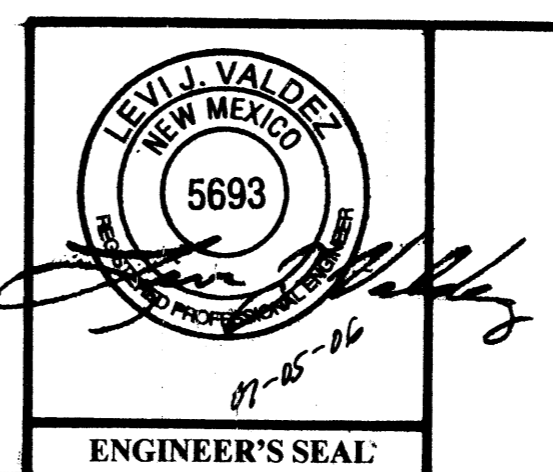
Traffic Engineering, Transportation Division	Date _____
Water Utility Department	Date _____
Parks and Recreation Department	Date _____
City Engineer	Date _____
* Environmental Health Department (conditional)	Date _____
Solid Waste Management	Date _____
DRB Chairperson, Planning Department	Date _____

*Environmental Health, if necessary

NOTE: LANDSCAPING PLAN SHALL BE IN COMPLIANCE WITH THE CITY OF ALBUQUERQUE WATER CONSERVATION, POLLUTION, AND WASTE WATER ORDINANCE.

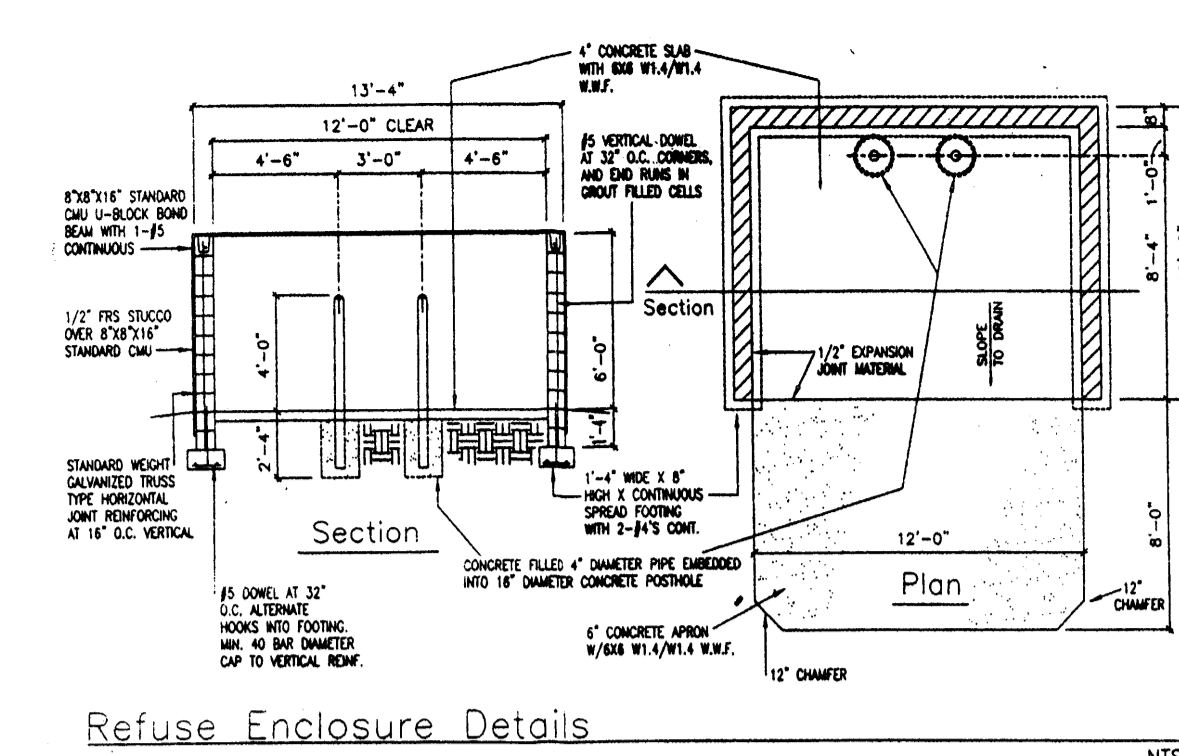
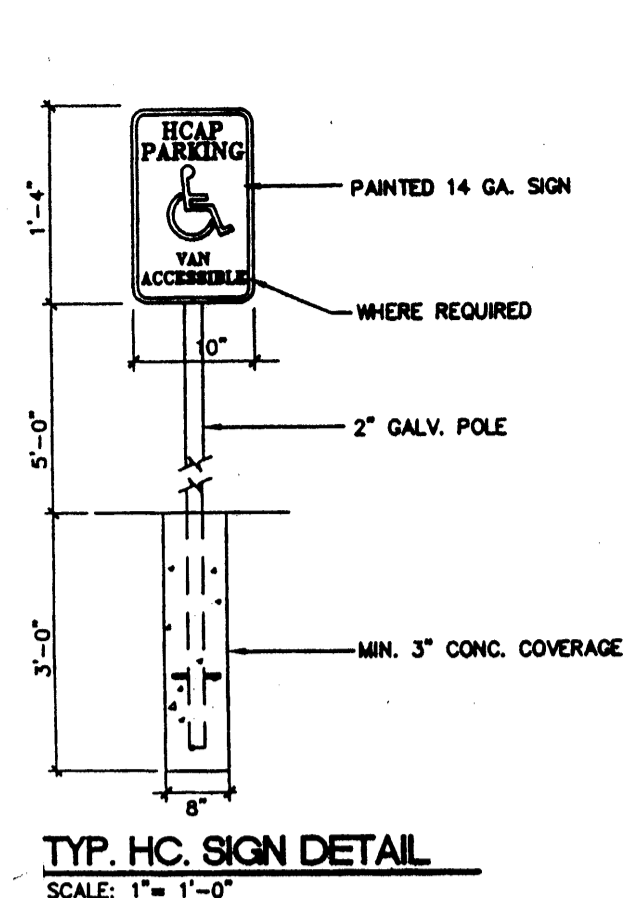
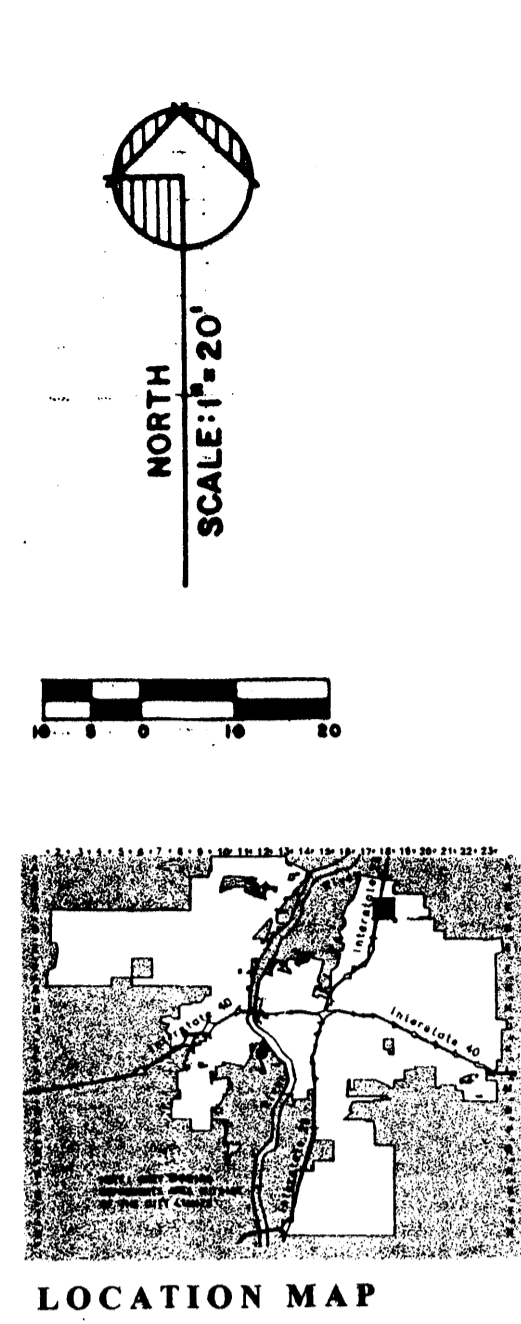
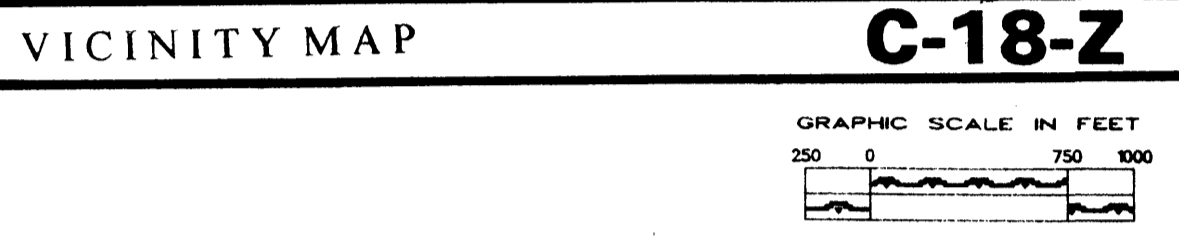
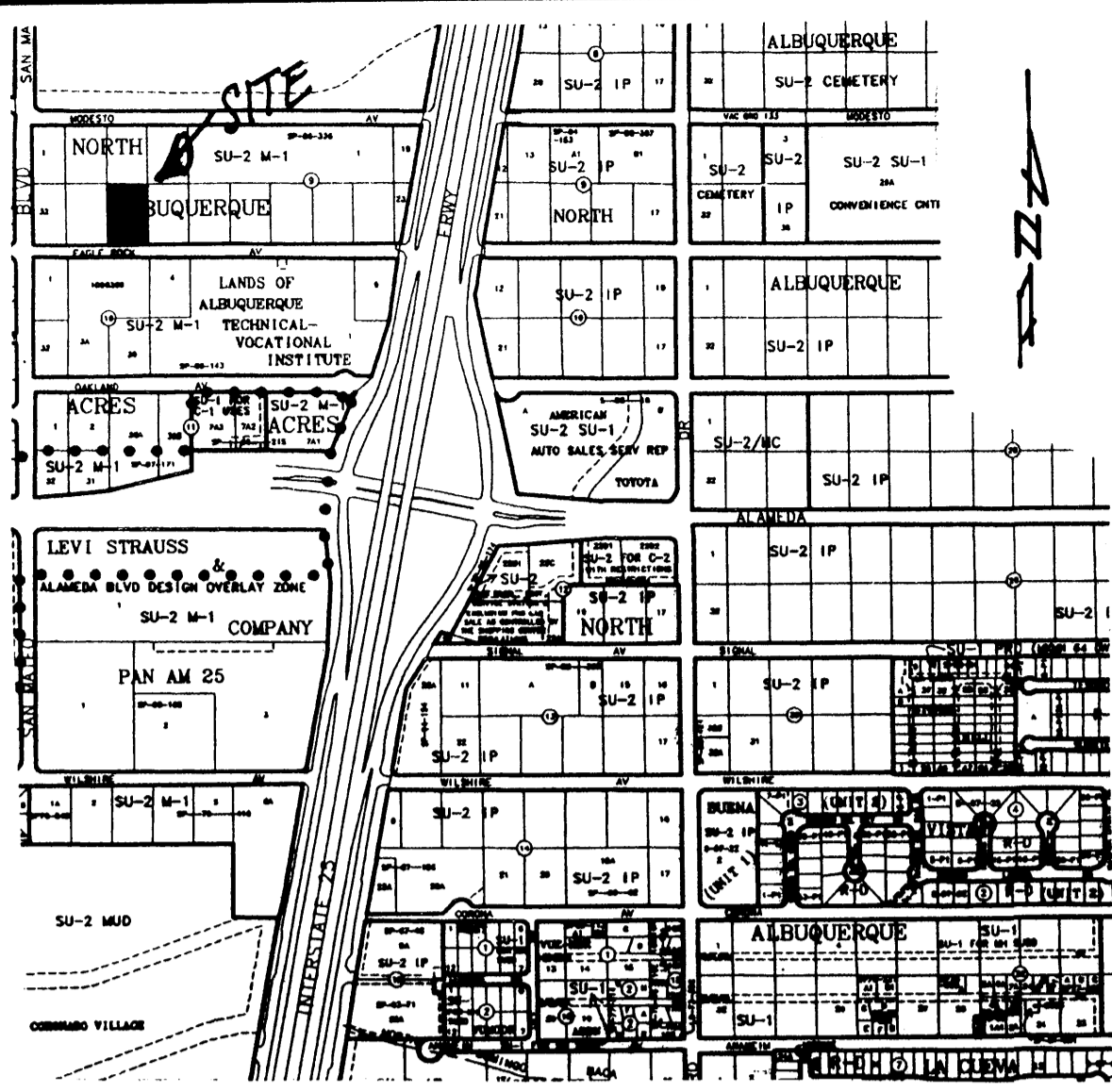
- LEGEND:**
- ARIZONA AGAVE (FRUITFUL PLANT)
 - ARTEMISIA CANA (SILVER CHUG)
 - YUCCA PENDULA
 - PURPLE ICE PLANT
 - GRAVEL MULCH (3/4" SANTA FE BROWN)
 - GROUND COVER

REQUIRED PARKING: BUILDING AREA = 18,191.3 SQ. FT. ZONED: SU-2/141
 2000 = 9.0 SPACES
 20 SPACES PROVIDED

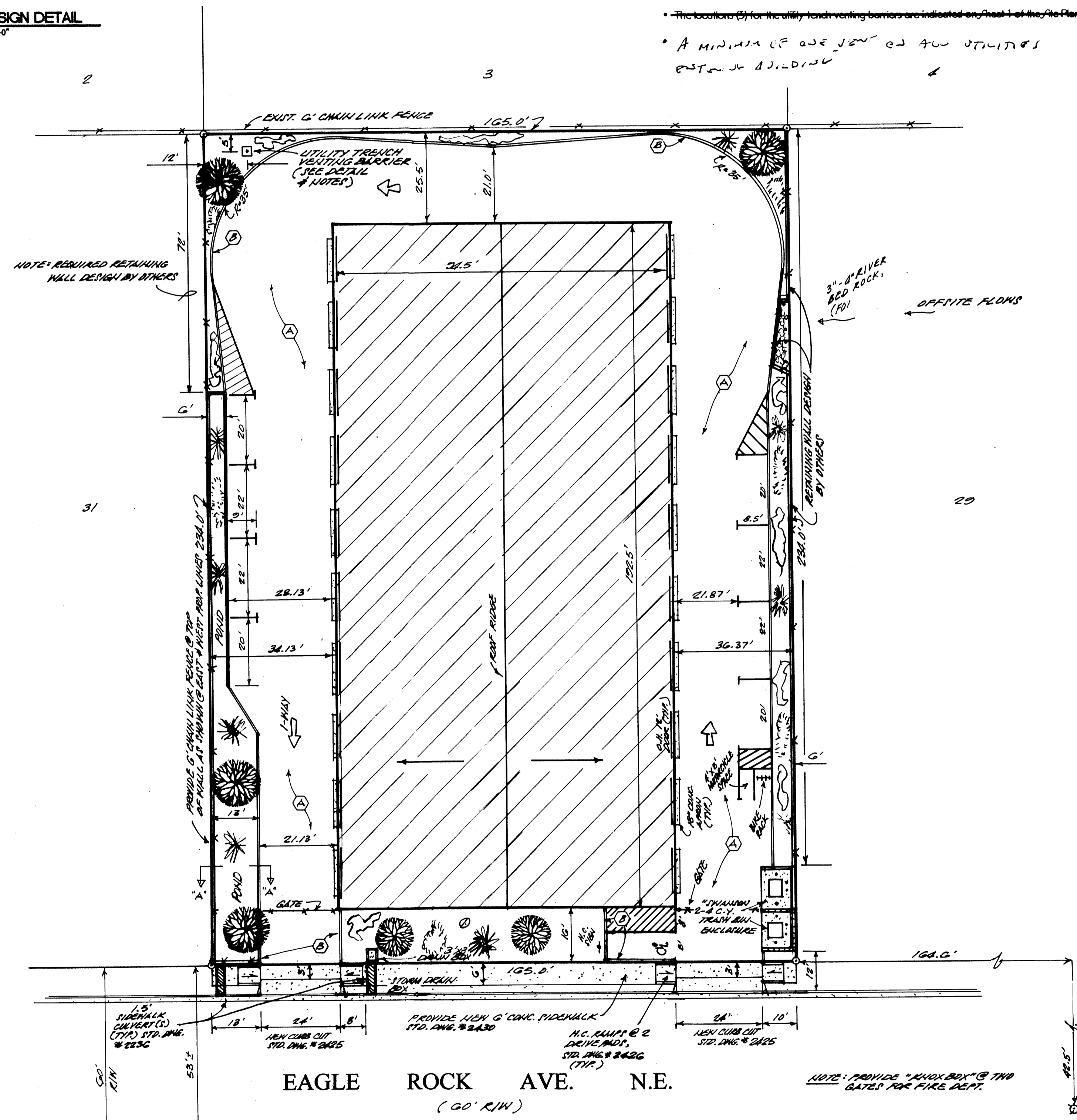
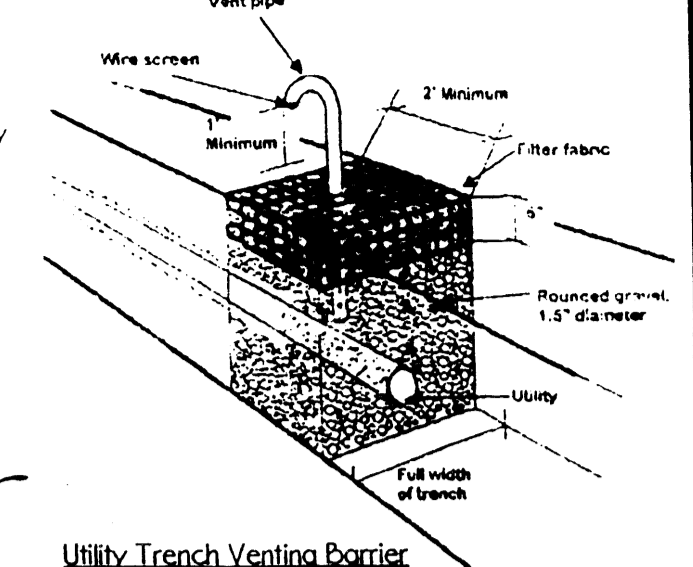


SITE/LANDSCAPE PLAN

A PROPOSED PLAN FOR LOT THIRTY (30) BLOCK 9, TRACT 'A', UNIT 'B' NORTH ALBUQUERQUE ACRES ALBUQUERQUE, NEW MEXICO MAY, 2006



- Detail Notes**
- Utility trench venting barriers shall consist of a gravel plug that measures a minimum of 2 feet along the length of the trench, and extends the full width and the full height of the trench.
 - The gravel shall be rounded (not crushed) 1.5-inch diameter rock.
 - Even-ounce non-woven filter fabric should be placed over the gravel and overlap the sides of the gravel plug by a minimum of 6-inches.
 - Landscaping material (gravel, bark, etc) should be placed over the filter fabric.
 - A 2-inch diameter perforated vent pipe (UV resistant PVC or galvanized metal) shall extend to approximately the mid-point of the gravel barrier.
 - Below grade, perforations shall be 1/2-inch diameter (maximum) on 6-inch centers all around the pipe at approximately 120°.
 - The vent pipe shall terminate in a gooseneck that opens between 1 and 3 feet above grade.
 - The gooseneck pipe opening should be covered with wire screen.
 - The utility line should be placed on a bed of at least 2 inches of gravel at the bottom of the trench.
 - The location(s) for the utility trench venting barriers are indicated on Sheet 1 of the Site Plan.



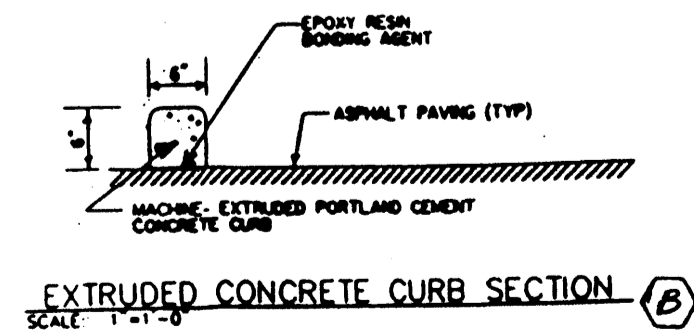
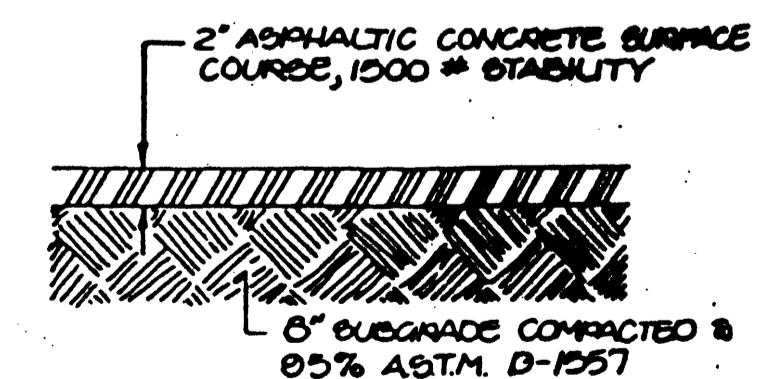
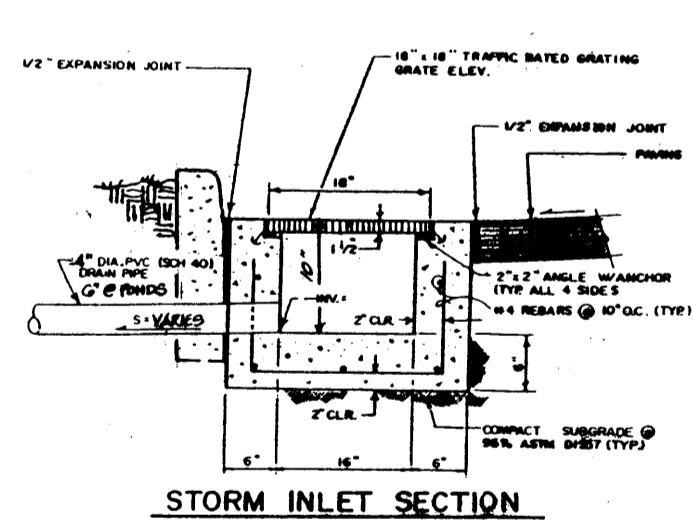
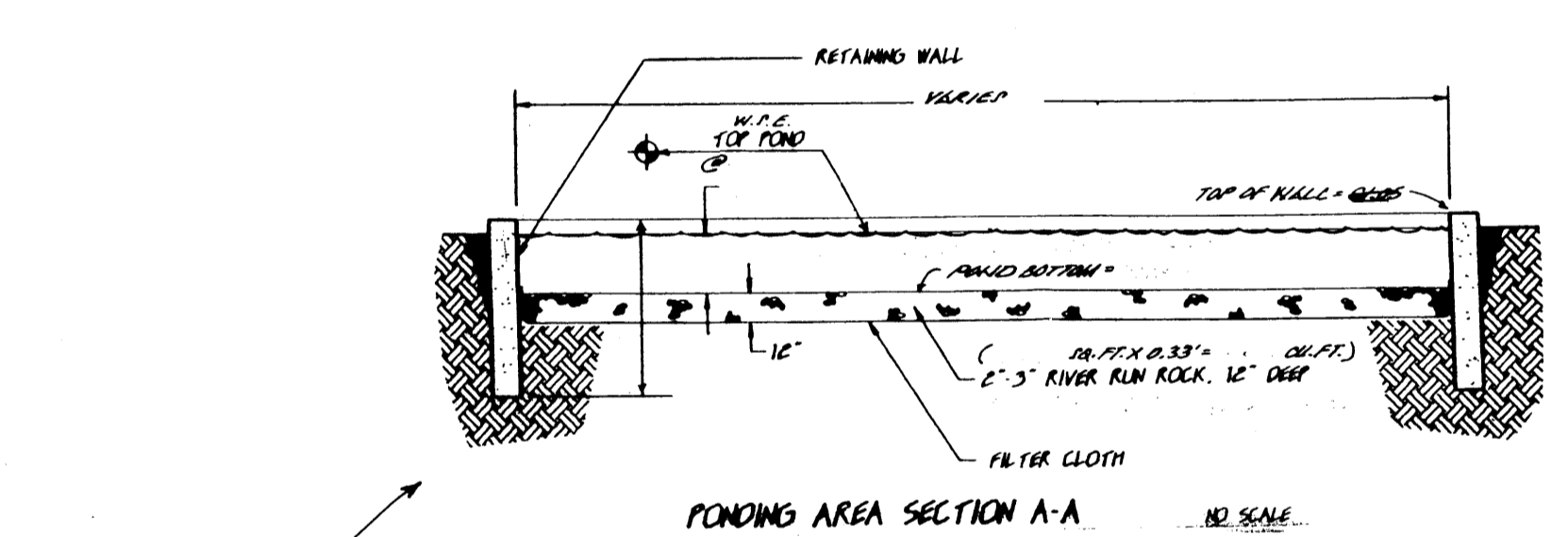
- NOTES: (THIS SHEET)**
- LANDSCAPING SHALL BE PER "PLANTING RESTRICTIONS APPROACH":
 - MEDIUM AND LOW WATER USE TREES / PLANTS 80% (MINIMUM) OF LANDSCAPED AREA.
 - WATER REQUIREMENTS, (H) = HIGH, (M) = MEDIUM, (L) = LOW, AS NOTED ON SCHEDULE IS PER ALBUQUERQUE PLANT LIST.
 - GENERAL:
 - LANDSCAPED AREAS: SHALL BE PREPARED WITH REQUIRED AND SUITABLE AMENDMENTS FOR PLANTING AND MAINTAINING SOD, TREES, SHRUBS, ETC. EXCAVATE TO NATURAL SUBSOIL LEVEL. FILL WITH CLEAN SUBSOIL AND 4" TOPSOIL (MINIMUM) CONTAINING HUMUS, (FREE OF DEBRIS, WEEDS, FIELD GRASSES, ETC.)
 - TREES: SHALL BE 2" O CALIPER (MINIMUM) AT 2'-0" ABOVE GROUND AND SHALL BE 10'-0" (MINIMUM) IN HEIGHT.
 - PLANTS / SHRUBS: SHALL BE 5 GALLON (MINIMUM).
 - GROUND COVER: SHALL BE ESTABLISHED WITHIN ONE (1) YEAR OF PLANTING (MAXIMUM). SOD, PLANTINGS, SHREDDED BARK, RIVER RUN GRAVEL SHALL BE OVER SOIL TREATED FOR WEED CONTROL.
 - IRRIGATION: UNDERGROUND SPRINKLER AND DRIP SYSTEM AS FOLLOWS: (CONTRACTOR SHALL SUBMIT PLAN AND SPECIFICATIONS FOR SYSTEM PROPOSED).
 - VALVE BOXES:
 - PRESSURE LINES: SCHEDULE 40 PVC.
 - LATERAL AND DISTRIBUTION LINES: CLASS 200 PVC
 - HEADS: POP-UP TYPE INSTALLED IN LAWN AREAS.
 - CONTROL WIRE: SOLID COPPER, UL APPROVED
 - NOTE: OWNER(S) SHALL MAINTAIN LANDSCAPING.
 - AREA:

1	1,200 SF
2	3,130 SF
3	— SF
4	— SF
5	— SF
TOTAL	4,330 SF

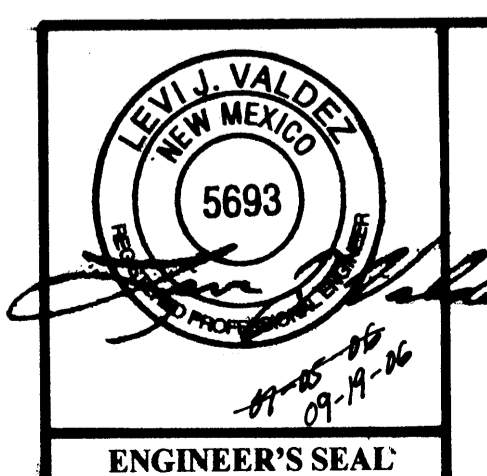
Revised

NOTE: LANDSCAPING PLAN SHALL BE IN COMPLIANCE WITH THE CITY OF ALBUQUERQUE WATER CONSERVATION, POLLUTION, AND WASTE WATER ORDINANCE.

- LEGEND:**
- ARIZONA SPH (PRAIRIE PLUM)
 - ARTEMISIA CANA (TRIFOLIUM)
 - YUCCA PENDULA
 - PURPLE ICE PLANT
 - * GRAVEL MULCH (3/4" SPLIT FE. BROWN)
 - GROUND COVER

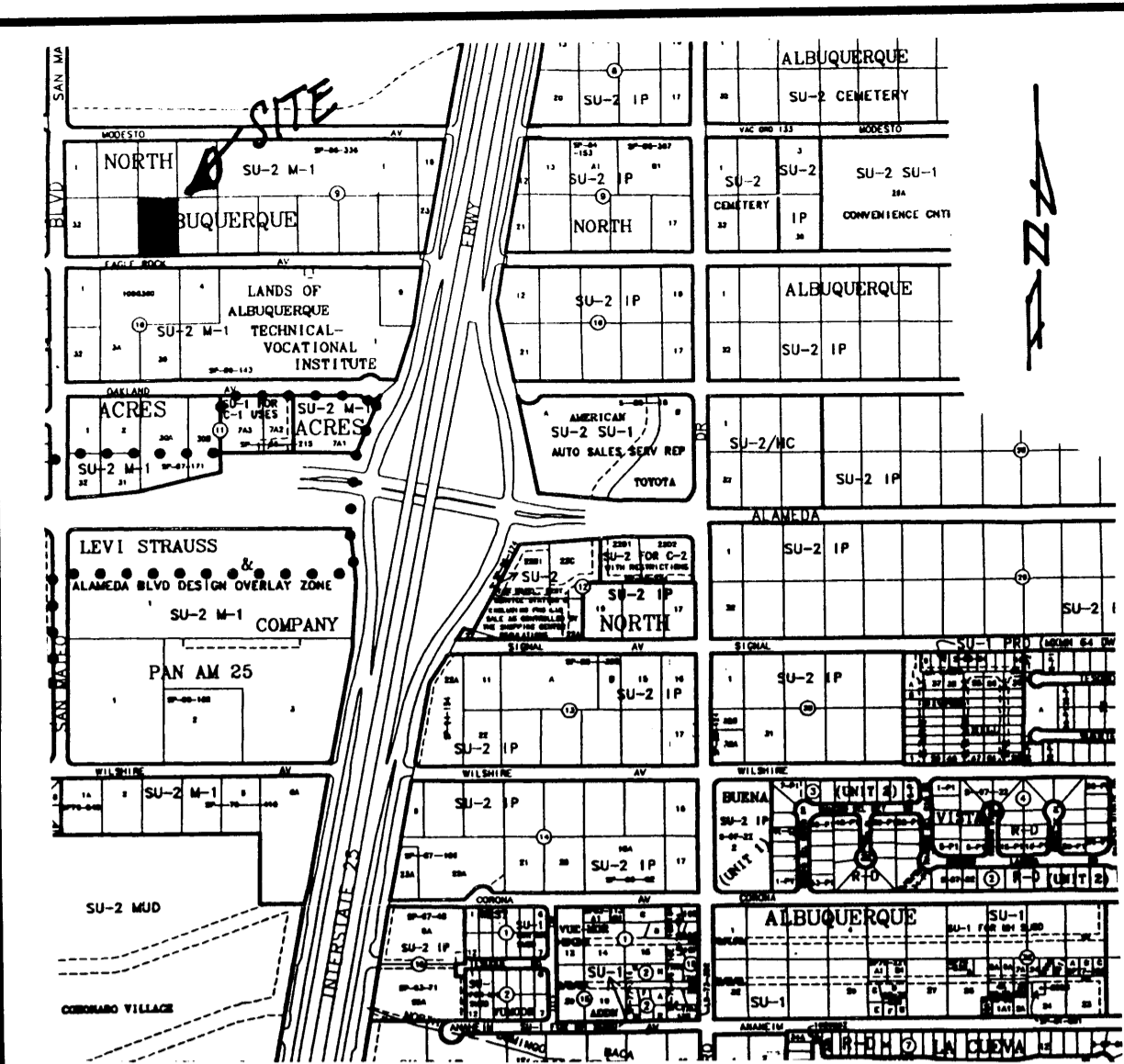


REQUIRED PARKING: BUILDING AREA = 18,191.3 SQ. FT. / 2000 = 9.0 SPACES
20 SPACES PROVIDED



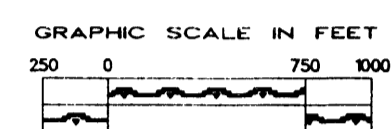
A PROPOSED PLAN FOR LOT THIRTY (30) BLOCK 9, TRACT 'A', UNIT 'B' NORTH ALBUQUERQUE ACRES ALBUQUERQUE, NEW MEXICO MAY, 2006

REG. LANDSCAPE = 3,063.0 SQ. FT. (15%)
PROVIDED LANDSCAPE = 4,330.0 SQ. FT.

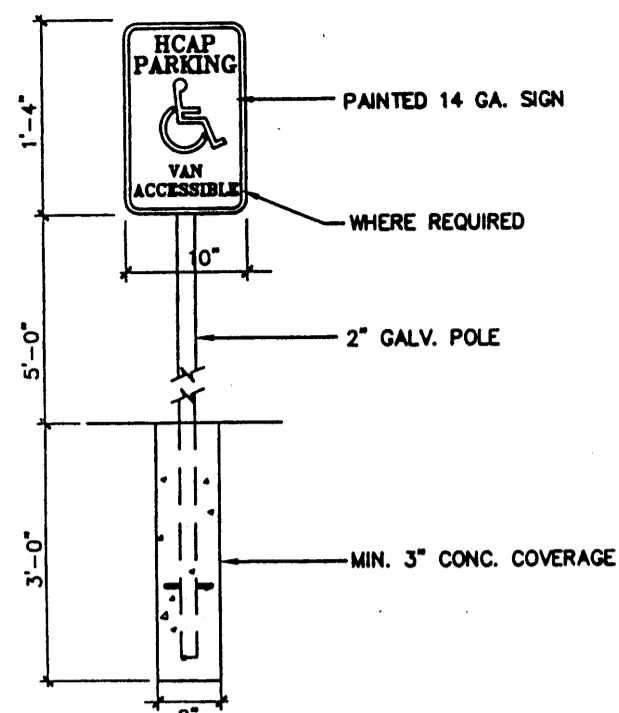
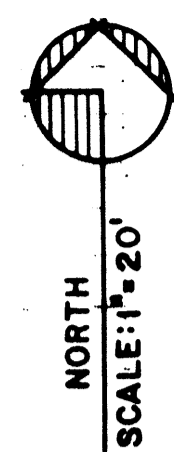
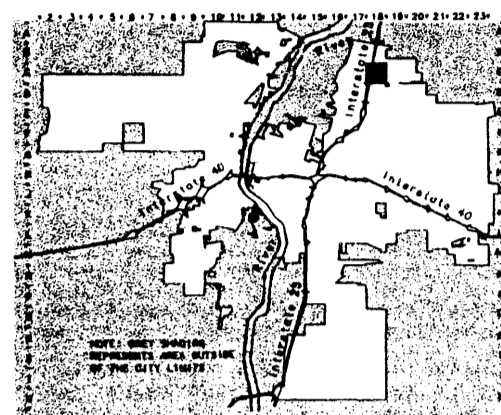


VICINITY MAP

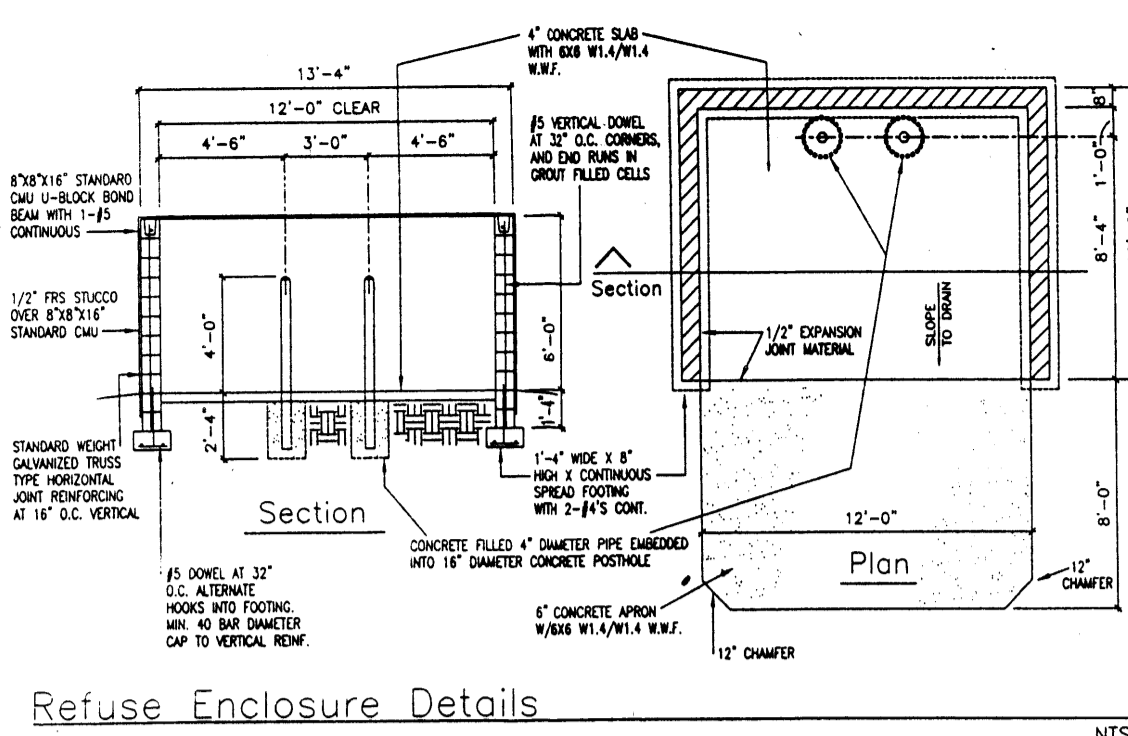
C-18-Z



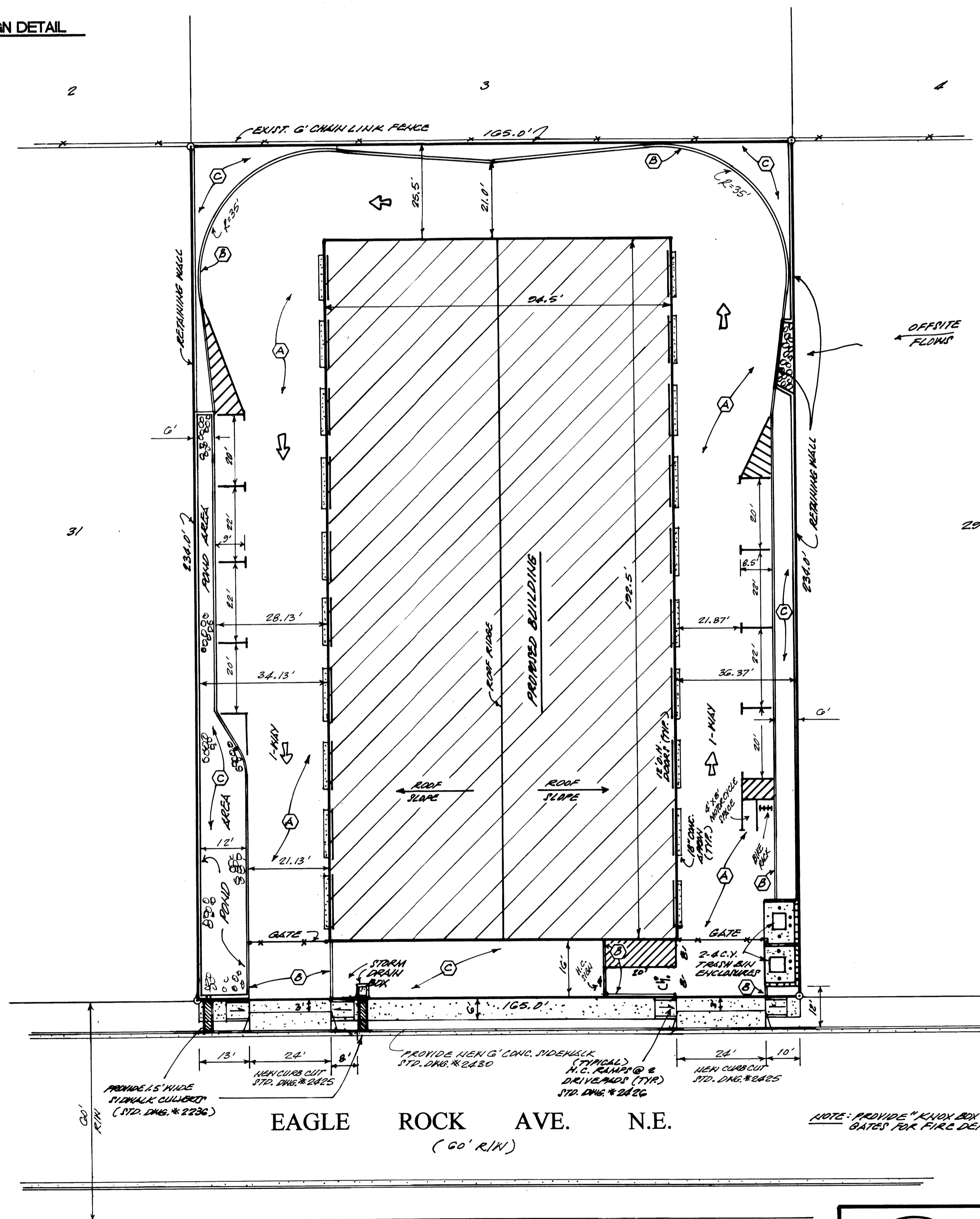
LOCATION MAP



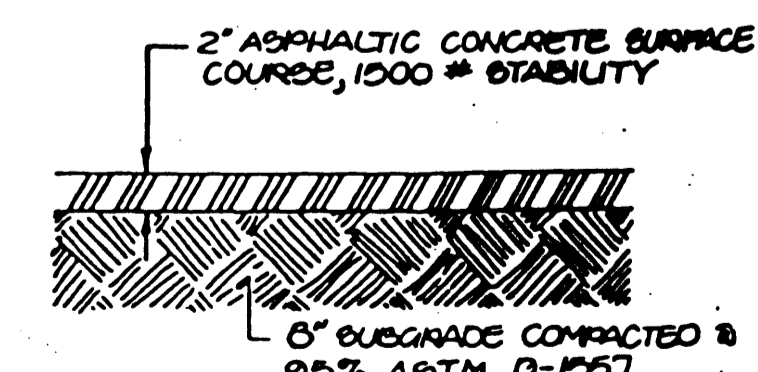
TYP. HC SIGN DETAIL
SCALE: 1" = 1'-0"



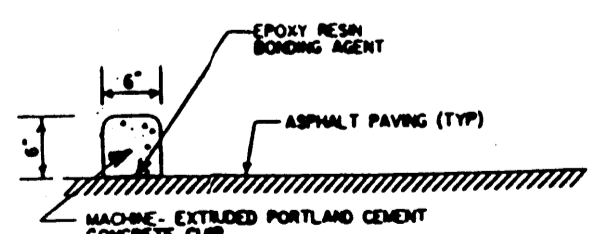
Refuse Enclosure Details



REQUIRED PARKING: (ZONED SU-2/M1)
BUILDING AREA = 18,191.3 SQ. FT. ÷ 2000 = 9.0 SPACES (REQ.)
9.0 SPACES (PROVIDED)



TYPICAL PAVEMENT SECTION
SCALE: 1" = 1'-0"

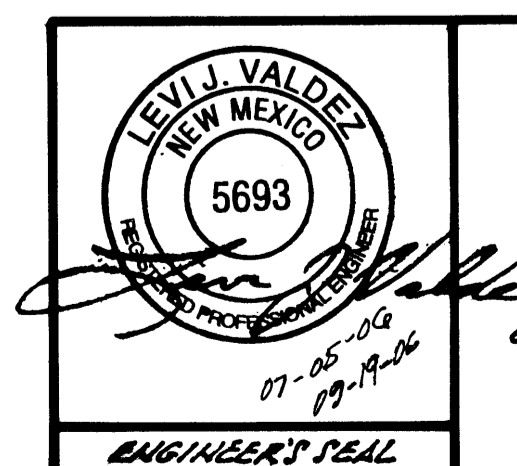


EXTRUDED CONCRETE CURB SECTION
SCALE: 1" = 1'-0"

(C) → LANDSCAPE AREA

NOTE: PROVIDE "KNOX BOX" @ TWO GATES FOR FIRE DEPT.

TRAFFIC CIRCULATION LAYOUT



A PROPOSED PLAN
FOR
LOT THIRTY (30)
BLOCK 9, TRACT 'A', UNIT 'B'
NORTH ALBUQUERQUE ACRES
ALBUQUERQUE, NEW MEXICO
MAY, 2006

