

Plat of
Tracts 1-A, 1-B, 2-A, 3-A, Unit No. 1 and 4-A, Unit No. 2
Dale J. Bellamah's
Carlisle Replat
 Section 11, Township 10 North, Range 3 East, N.M.P.M
 Albuquerque, Bernalillo County, New Mexico
 April 2017

RECORDING STAMP

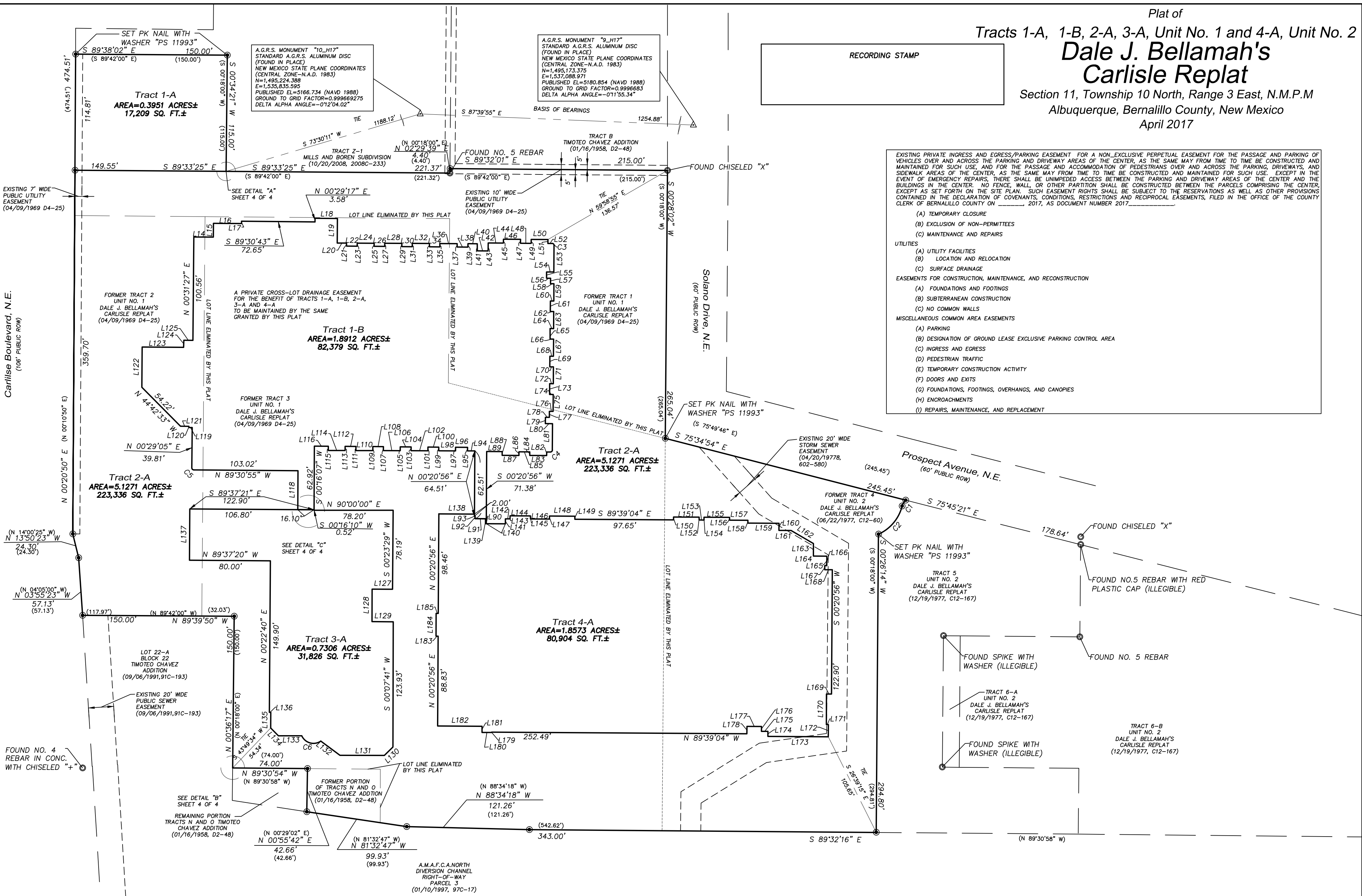
EXISTING PRIVATE INGRESS AND EGRESS/PARKING EASEMENT FOR A NON-EXCLUSIVE PERPETUAL EASEMENT FOR THE PASSAGE AND PARKING OF VEHICLES OVER AND ACROSS THE PARKING AND DRIVEWAY AREAS OF THE CENTER, AS THE SAME MAY FROM TIME TO TIME BE CONSTRUCTED AND MAINTAINED FOR SUCH USE, AND FOR THE PASSAGE AND ACCOMMODATION OF PEDESTRIANS OVER AND ACROSS THE PARKING, DRIVEWAYS, AND SIDEWALK AREAS OF THE CENTER, AS THE SAME MAY FROM TIME TO TIME BE CONSTRUCTED AND MAINTAINED FOR SUCH USE. EXCEPT IN THE EVENT OF EMERGENCY REPAIRS, THERE SHALL BE UNIMPEDED ACCESS BETWEEN THE PARKING AND DRIVEWAY AREAS OF THE CENTER AND THE BUILDINGS IN THE CENTER. NO FENCE, WALL, OR OTHER PARTITION SHALL BE CONSTRUCTED BETWEEN THE PARCELS COMPRISING THE CENTER, EXCEPT AS SET FORTH ON THE SITE PLAN. SUCH EASEMENT RIGHTS SHALL BE SUBJECT TO THE RESERVATIONS AS WELL AS OTHER PROVISIONS CONTAINED IN THE DECLARATION OF COVENANTS, RESTRICTIONS AND RECIPROCAL EASEMENTS, FILED IN THE OFFICE OF THE COUNTY CLERK OF BERNALILLO COUNTY ON _____, 2017, AS DOCUMENT NUMBER 2017-_____.

(A) TEMPORARY CLOSURE
 (B) EXCLUSION OF NON-PERMITTEES
 (C) MAINTENANCE AND REPAIRS

UTILITIES
 (A) UTILITY FACILITIES
 (B) LOCATION AND RELOCATION
 (C) SURFACE DRAINAGE

EASEMENTS FOR CONSTRUCTION, MAINTENANCE, AND RECONSTRUCTION
 (A) FOUNDATIONS AND FOOTINGS
 (B) SUBTERRANEAN CONSTRUCTION
 (C) NO COMMON WALLS

MISCELLANEOUS COMMON AREA EASEMENTS
 (A) PARKING
 (B) DESIGNATION OF GROUND LEASE EXCLUSIVE PARKING CONTROL AREA
 (C) INGRESS AND EGRESS
 (D) PEDESTRIAN TRAFFIC
 (E) TEMPORARY CONSTRUCTION ACTIVITY
 (F) DOORS AND EXITS
 (G) FOUNDATIONS, FOOTINGS, OVERHANGS, AND CANOPIES
 (H) ENCROACHMENTS
 (I) REPAIRS, MAINTENANCE, AND REPLACEMENT



Legend

N 90°00'00" E	MEASURED BEARING AND DISTANCES
(N 90°00'00" E)	RECORD BEARINGS AND DISTANCES
○	FOUND AND USED MONUMENT AS DESIGNATED
⊙	DENOTES NO. 4 REBAR WITH YELLOW PLASTIC CAP "PS 11993" SET THIS SURVEY UNLESS OTHERWISE NOTED
△	NOTE: AT PROPERTY CORNER LOCATIONS WHERE NO SYMBOL IS SHOWN DUE TO SPACE RESTRICTIONS, A CORNER WILL ALSO BE SET
△	FOUND ALUMINUM AGRS MONUMENT AS DESIGNATED

Note:
 SEE SHEET 4 OF 4 FOR LINE AND CURVE TABLES

INDEXING INFORMATION FOR COUNTY CLERK
 OWNER ROC NM 2500 CARLISLE INC
 SECTION 11, TOWNSHIP 10N, RANGE 3 E,
 SUBDIVISION DALE J. BELLAMAH'S CARLISLE REPLAT
 UPC 101705905518731030

PRECISION SURVEYS, INC.

OFFICE LOCATION:
 9200 San Mateo Boulevard, NE
 Albuquerque, NM 87113
 505.856.5700 PHONE
 505.856.7900 FAX