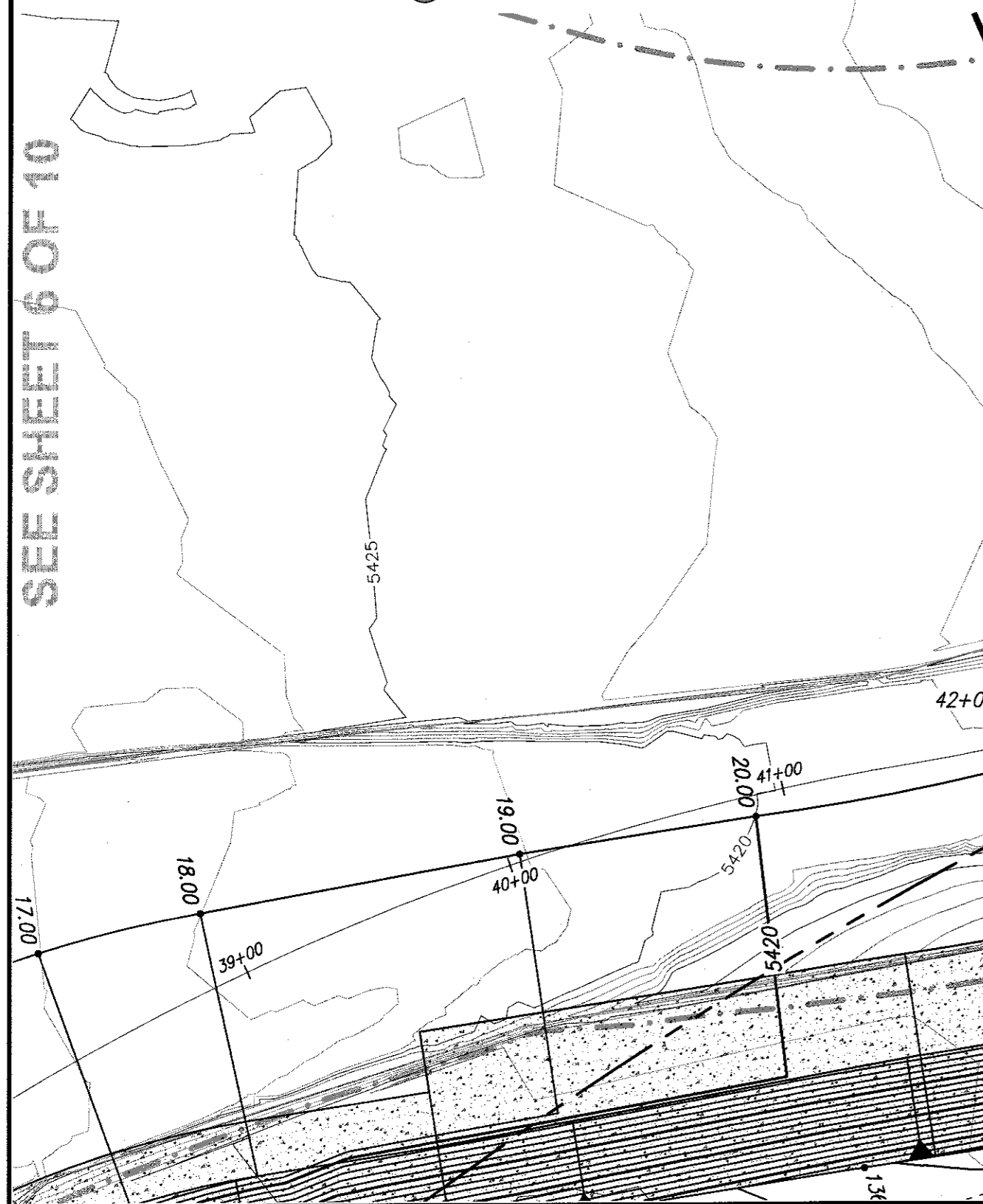


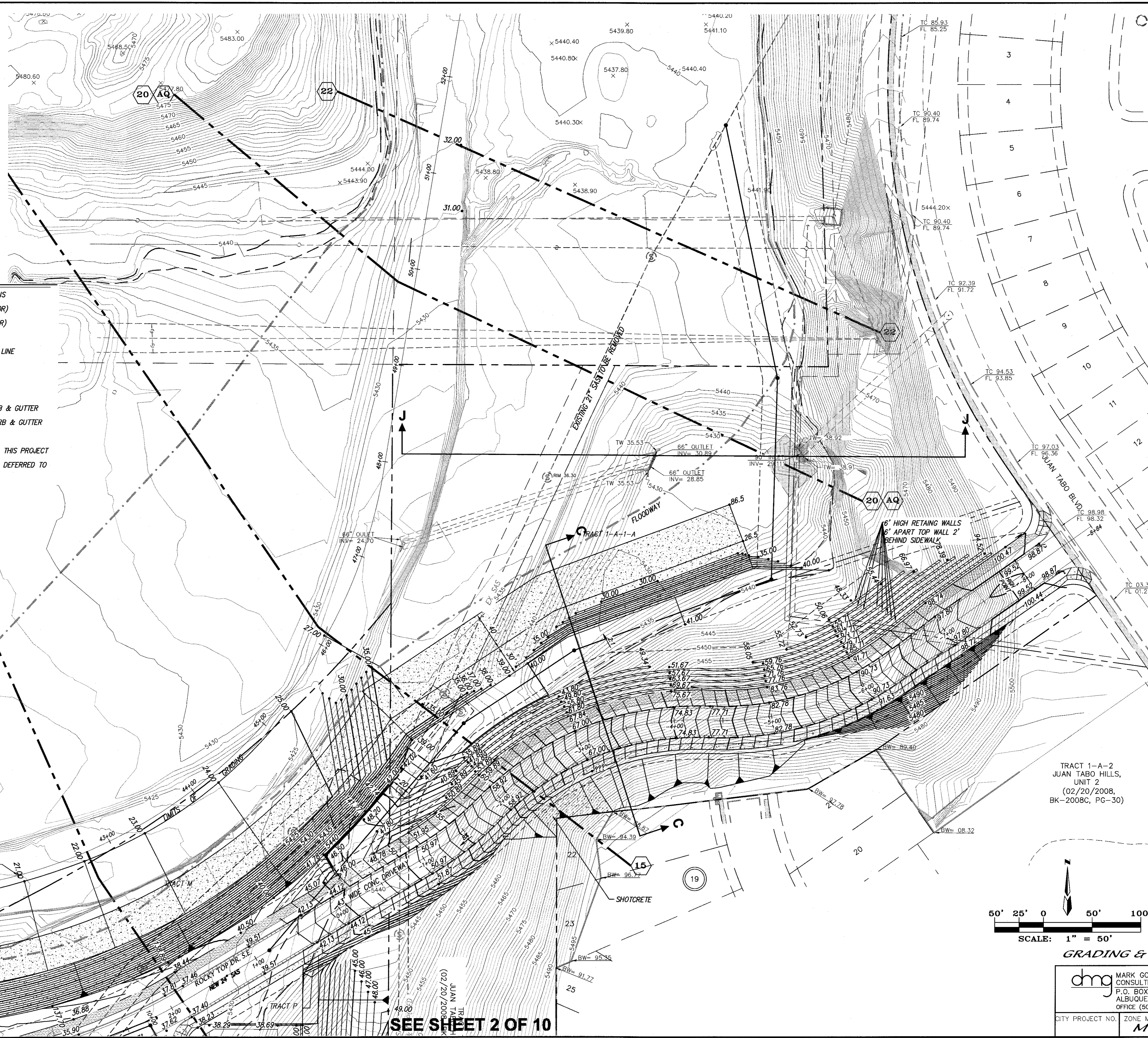
VICINITY MAP ZONE MAP: M-21

- LEGEND**
- EXIST. HANDRAIL
 - EXIST. CONCRETE CURB
 - EXIST. CONCRETE/SIDEWALK
 - EXIST. WALL OR HEAD WALL
 - EXIST. TOP CURB/FLOWLINE
 - EXIST. SPOT ELEV.
 - EXIST. GUY WIRE
 - EXIST. MONITOR WELL
 - EXIST. OVERHEAD ELECTRIC
 - EXIST. POWER POLE
 - EXIST. SANITARY SEWER MANHOLE
 - EXIST. STORM DRAIN MANHOLE
 - EXIST. WATER VALVE
 - EXIST. WATER METER
 - NEW SPOT ELEVATIONS
 - NEW CONTOUR (MAJOR)
 - NEW CONTOUR (MINOR)
 - NEW BOUNDARY LINE
 - NEW RIGHT-OF-WAY LINE
 - NEW LOT LINE
 - NEW CENTERLINE
 - NEW EASEMENT
 - NEW STANDARD CURB & GUTTER
 - NEW MOUNTABLE CURB & GUTTER
 - NEW SIDEWALK
 - NEW RETAINING WALL THIS PROJECT
 - NEW RETAINING WALL DEFERRED TO THE HOME BUILDERS

- LIMITS 100 YEAR FLOOD PLAIN
- LIMITS 500 YEAR FLOOD PLAIN
- LIMITS OF FLOODWAY
- LIMITS AD ZONE
- BLOCK NUMBER INDENTITY



SEE SHEET 6 OF 10

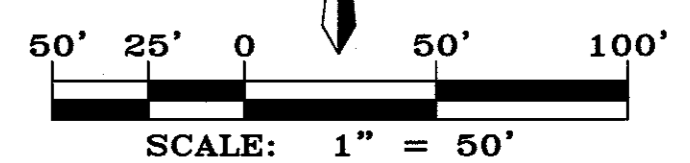


SEE SHEET 2 OF 10

AS BUILT INFORMATION	
CONTRACTOR	DATE
WORK STARTED BY	DATE
ACCEPTED BY	DATE
FIELD CHECKED BY	DATE
DRAWINGS BY	DATE
CORRECTED BY	DATE
MICRO-FILM INFORMATION	DATE
RECORDED BY	NO.

SURVEY INFORMATION	
FIELD NOTES	DATE
NO.	BY

ENGINEER'S SEAL	
NO.	DATE
REVISIONS	DATE
DESIGN	DATE
CHECKED BY	DATE

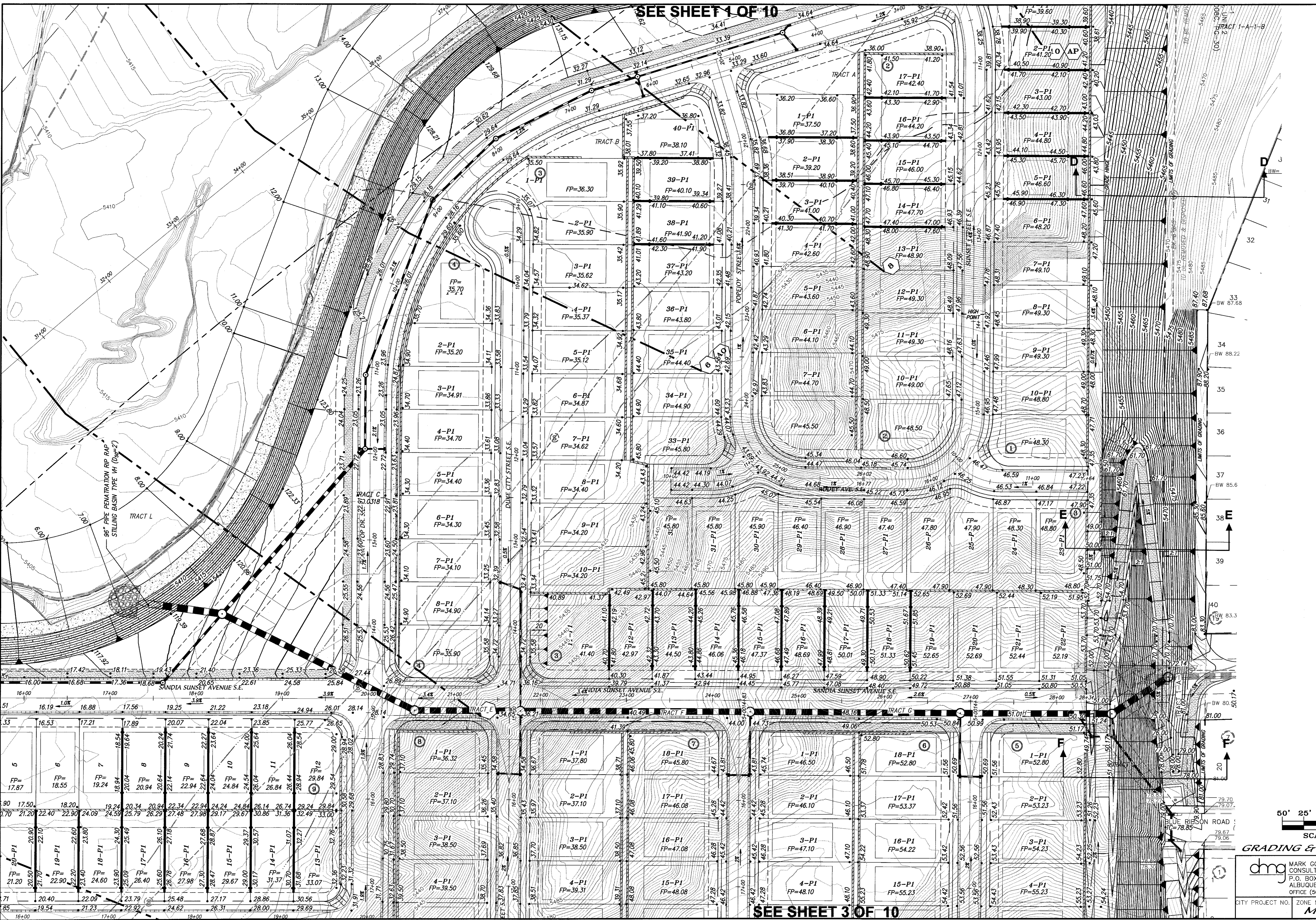


GRADING & DRAINAGE PLAN

TRACT 1-A-2
 JUAN TABO HILLS,
 UNIT 2
 (02/20/2008,
 BK-2008C, PG-30)

MARK GOODWIN & ASSOCIATES, P.A.
 CONSULTING ENGINEERS
 P.O. BOX 90606
 ALBUQUERQUE, NEW MEXICO 87199
 OFFICE (505) 828-2200, FAX (505) 797-9539

CITY PROJECT NO. ZONE MAP NO. SHEET OF
 M-21-Z 1 10



SEE SHEET 1 OF 10

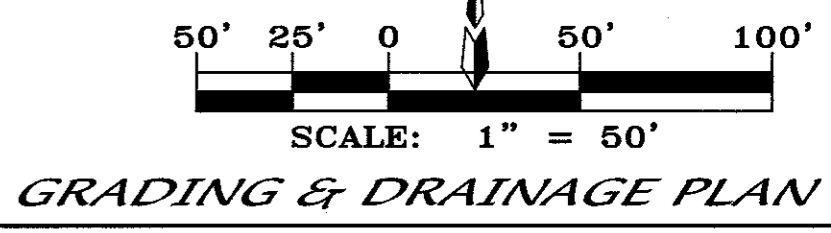
SEE SHEET 3 OF 10

AS BUILT INFORMATION	
CONTRACTOR	DATE
WORK STARTED BY	DATE
FIELD ACCEPTANCE BY	DATE
FIELD DRAWN BY	DATE
CHECKED BY	DATE
RECORDED BY	DATE

SURVEY INFORMATION	
FIELD NOTES	NO.
BY	

ENGINEER'S SEAL	
DESIGNED BY	DATE
DRAWN BY	DATE
CHECKED BY	DATE

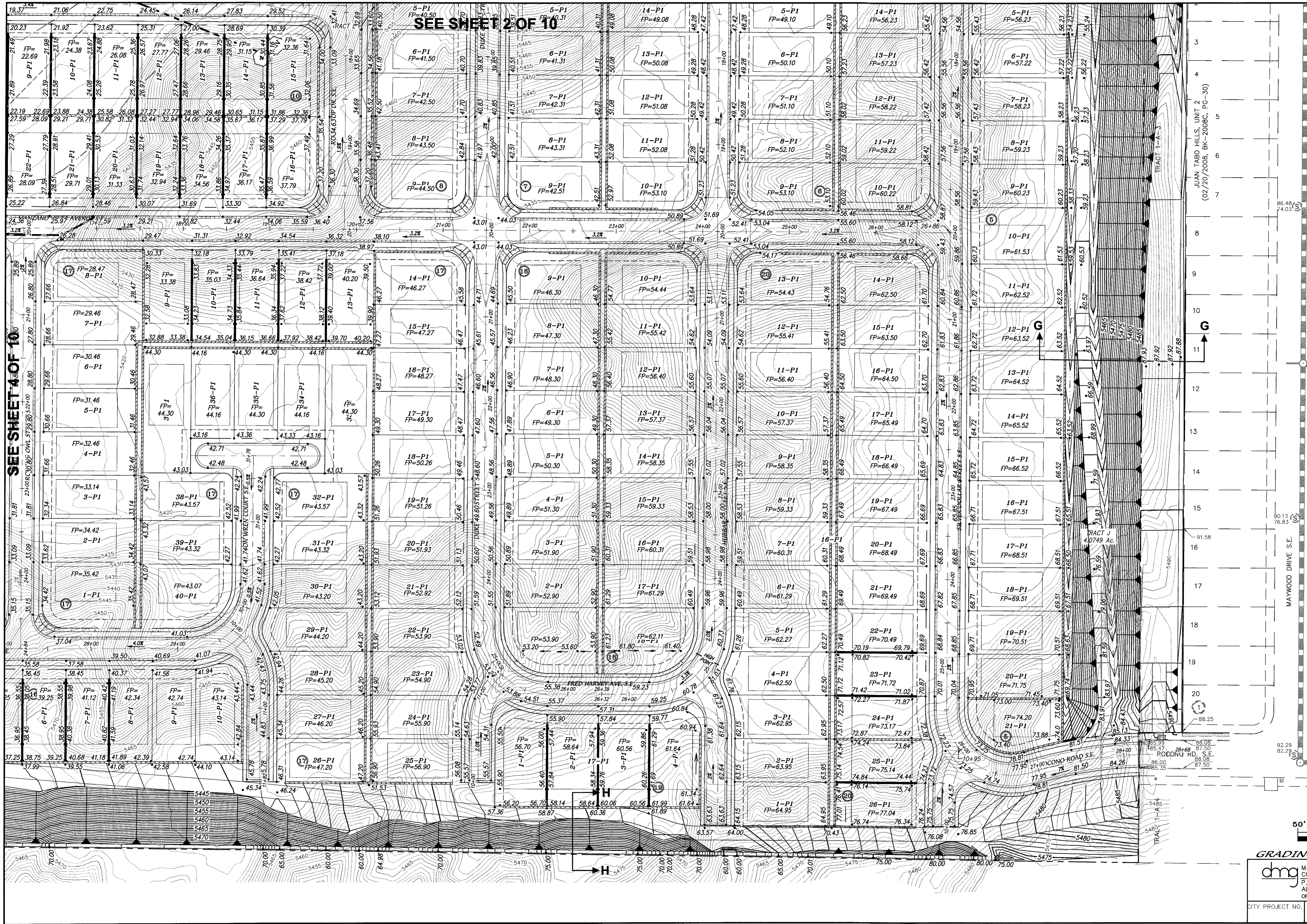
REMARKS	
NO.	DATE
1	06/14
2	06/14



GRADING & DRAINAGE PLAN

dmg MARK GOODWIN & ASSOCIATES, P.A.
CONSULTING ENGINEERS
P.O. BOX 90606
ALBUQUERQUE, NEW MEXICO 87199
OFFICE (505) 828-2200, FAX (505) 797-9539

CITY PROJECT NO. _____ ZONE MAP NO. _____ SHEET OF _____
M-21-Z 2 10



SEE SHEET 4 OF 10

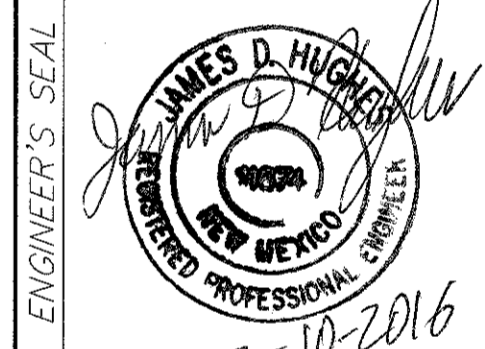
SEE SHEET 2 OF 10

SCALE: 1" = 50'

GRADING & DRAINAGE PLAN

dmg MARK GOODWIN & ASSOCIATES, P.A.
CONSULTING ENGINEERS
P.O. BOX 90606
ALBUQUERQUE, NEW MEXICO 87199
OFFICE (505) 828-2200, FAX (505) 797-9539

CITY PROJECT NO. ZONE MAP NO. SHEET OF
M-21-Z 3 10



REVISIONS	
NO.	DATE
1	06/14
2	06/14

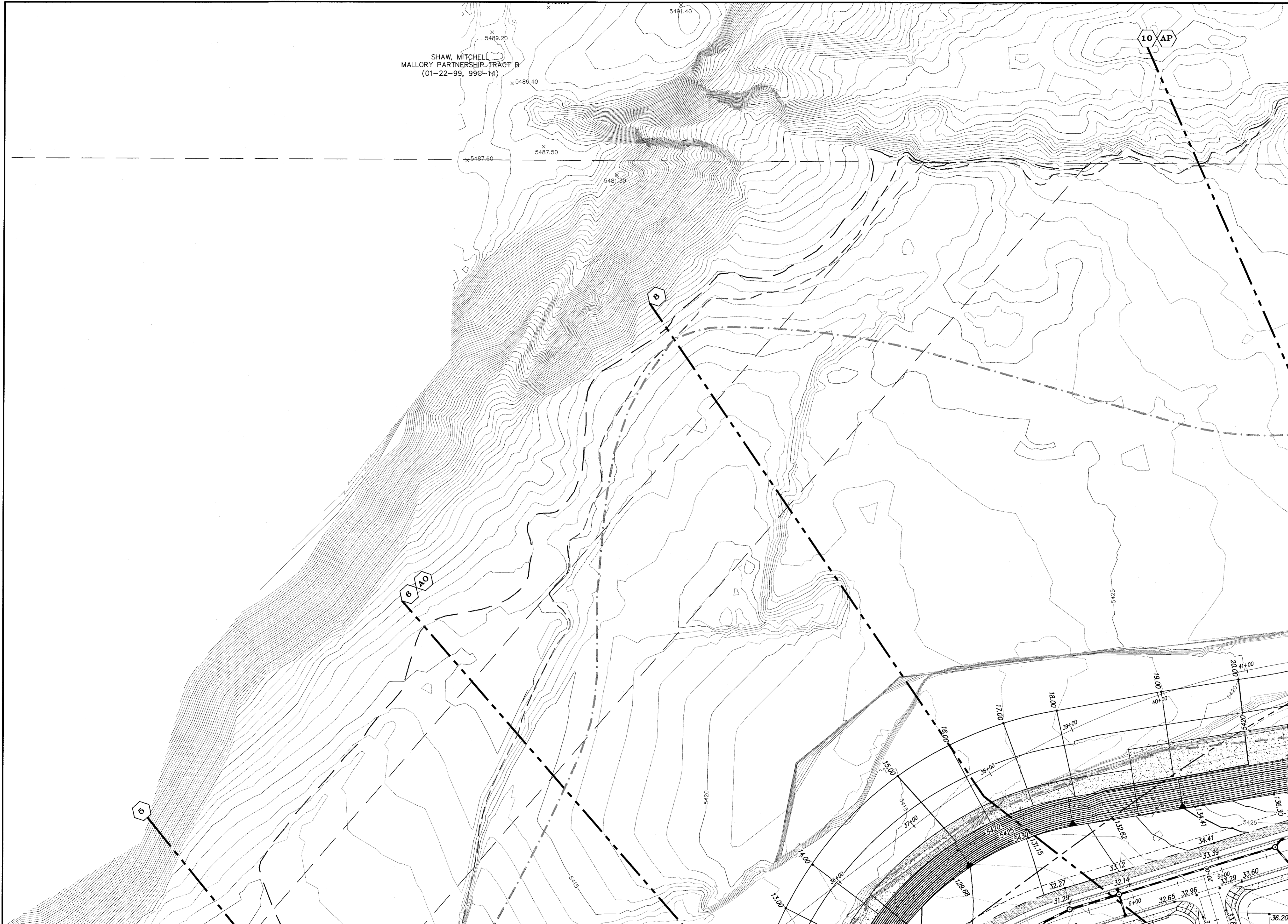
DESIGNED BY **JDH** DATE **06/14**
DRAWN BY **ACH** DATE **06/14**
CHECKED BY **DMG** DATE **06/14**

SURVEY INFORMATION	
NO.	BY
1	DMG
2	DMG
3	DMG
4	DMG
5	DMG
6	DMG
7	DMG
8	DMG
9	DMG
10	DMG
11	DMG
12	DMG
13	DMG
14	DMG
15	DMG
16	DMG
17	DMG
18	DMG
19	DMG
20	DMG

ENGINEER'S SEAL

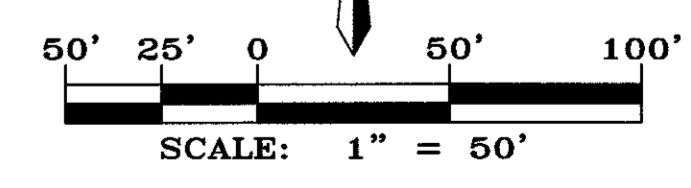
AS BUILT INFORMATION	
CONTRACTOR	DATE
MARK GOODWIN & ASSOCIATES, P.A.	06/14
INSPECTED BY	DATE
DMG	06/14
ACCEPTANCE BY	DATE
DMG	06/14
REVISIONS	DATE
DMG	06/14
DATE	DATE
06/14	06/14

STATION "5-M22" IS LOCATED 8.7 M. SE OF DOWNTOWN ALBUQUERQUE
ON THE EAST SIDE OF THE MUNICIPAL LIMITS LINE IN THE FOUR HILLS
SUBDIVISION AREA. STATION IS 600 FT. EAST OF MUNICIPAL LIMITS LINE,
77.9' SE OF POWER POLE #637 & 106.0' NW OF POWER POLE #60.
STATION IS A STANDARD ACS BRASS DISK SET IN A CONCRETE
MONUMENT IN THE GROUND. STATION IS STAMPED "5-M22".
X= 1,584,263.207, Y= 1,475,762.595, (NAD 83), Z= 5597.219 (NAVD 1989).



SEE SHEET 5 OF 10

SEE SHEET 1 OF 10



GRADING & DRAINAGE PLAN

dmg MARK GOODWIN & ASSOCIATES, P.A.
 CONSULTING ENGINEERS
 P.O. BOX 90606
 ALBUQUERQUE, NEW MEXICO 87199
 OFFICE (505) 828-2200, FAX (505) 797-9539

CITY PROJECT NO. ZONE MAP NO. SHEET OF
 M-21-Z 6 10

ENGINEER'S SEAL		SURVEY INFORMATION		AS BUILT INFORMATION	
		NO.	DATE	CONTRACTOR	DATE
		BY	DATE	WORK BY	DATE
NO.	DATE	REMARKS	NO.	DATE	NO.
DESIGNED BY	DATE	REVISIONS	NO.	DATE	NO.
DRAWN BY	DATE	DESIGN	NO.	DATE	NO.
CHECKED BY	DATE		NO.	DATE	NO.

BENCH MARKS
 STATION "5-422" IS LOCATED 8.7 M. SE OF DOWNTOWN ALBUQUERQUE ON THE EAST SIDE OF THE MUNICIPAL LIMITS LINE IN THE FOUR HILLS SUBDIVISION AREA. STATION IS 600 FT. EAST OF MUNICIPAL LIMITS LINE, 71.9' SE OF POWER POLE #8537 & 166.0' NW OF POWER POLE #60. STATION IS A STANDARD ACS BRASS DISK SET IN A CONCRETE MONUMENT IN THE GROUND. STATION IS STAMPED "5-422".
 X= 1,584,263.207, Y= 1,475,762.595, (NAD 83), Z= 5597.219 (NAVD 1989).

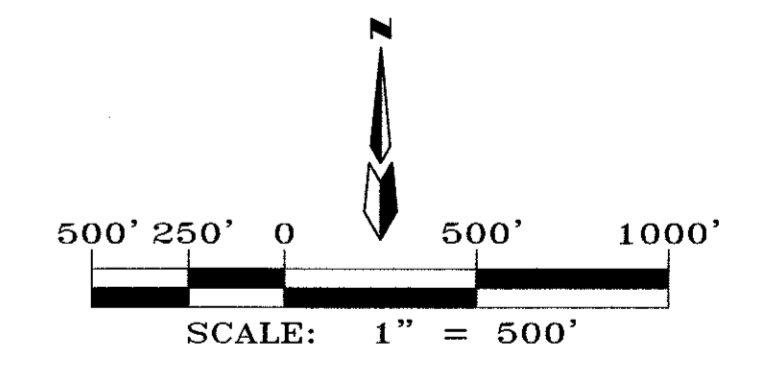


Table 1: HYDROLOGY SUMMARY TABLE

AHYMO BASIN ID	Location	AREA		Ground Cover (%)				Q ₁₀₀ (cfs)			Water Quality Volume (Ac-Ft)	
		(Ac)	(Sq mi)	A	B	C	D	Increment	Increment	Sub Total		
100	Four Hills	89.10	0.13022	8	18	35	38.7	328.22	1.3218	1.3218		
101	Juan Tabo Hills	66.80	0.10438	0	19	39	42	282.50	1.0755	1.0755		
200	Four Hills	9.00	0.01406	0	20	40	40	37.61	0.1380	1.4598		
201	Kirtland	76.30	0.01828	100	0	0	0	27.64	0.0000	0.0000		
203	Juan Tabo Hills	42.50	0.06641	0	22	45	33	172.59	0.5376	1.6131		
300	Juan Tabo Hills	22.30	0.03484	0	14	29	57	99.75	0.4873	2.1004		
400	JTH Estates	77.70	0.12141	0	9	41	50	343.61	1.4893	1.4893		
TOTALS:		383.70	0.50					1291.92		5.05		

LEGEND

- AHYMO BASIN BOUNDARY
- - - SUB-BASIN BOUNDARY
- NEW RCP STORM DRAIN
- (400) AHYMO BASIN NUMBER



ENGINEER'S SEAL		SURVEY INFORMATION		BENCH MARKS		AS BUILT INFORMATION	
	NO.	NO.	NO.	NO.	NO.	NO.	NO.
	DATE	DATE	DATE	DATE	DATE	DATE	DATE
REMARKS	BY	BY	BY	BY	BY	BY	BY
DESIGNED BY: JGH	DATE: 06/14	CONTRACTOR:	DATE:	INSPECTOR'S:	DATE:	INSPECTOR'S:	DATE:
DRAWN BY: ACH	DATE: 06/14	STATION "5-M22" IS LOCATED 8.7 MI. SE OF DOWNTOWN ALBUQUERQUE ON THE EAST SIDE OF THE MUNICIPAL LIMITS LINE IN THE FOUR HILLS SUBDIVISION AREA. STATION IS 600 FT. EAST OF MUNICIPAL LIMITS LINE, 71.9' SE. OF POWER POLE #327 & 186.0' NW OF POWER POLE #60.	DATE:	INSPECTOR'S:	DATE:	INSPECTOR'S:	DATE:
CHECKED BY: DMG	DATE: 06/14	STATION IS A STANDARD ACS BRASS DISK SET IN A CONCRETE MONUMENT IN THE GROUND. STATION IS STAMPED "5-M22".	DATE:	INSPECTOR'S:	DATE:	INSPECTOR'S:	DATE:
		Y= 1,564,263.207, X= 1,475,762.595, (MID 83), Z= 5597.219 (MID 1988)	DATE:	INSPECTOR'S:	DATE:	INSPECTOR'S:	DATE:

JUAN TABO HILLS ESTATES
DRAINAGE BASIN MAP

dmg MARK GOODWIN & ASSOCIATES, P.A.
CONSULTING ENGINEERS
P.O. BOX 90606
ALBUQUERQUE, NEW MEXICO 87199
OFFICE (505) 828-2200, FAX (505) 797-9539

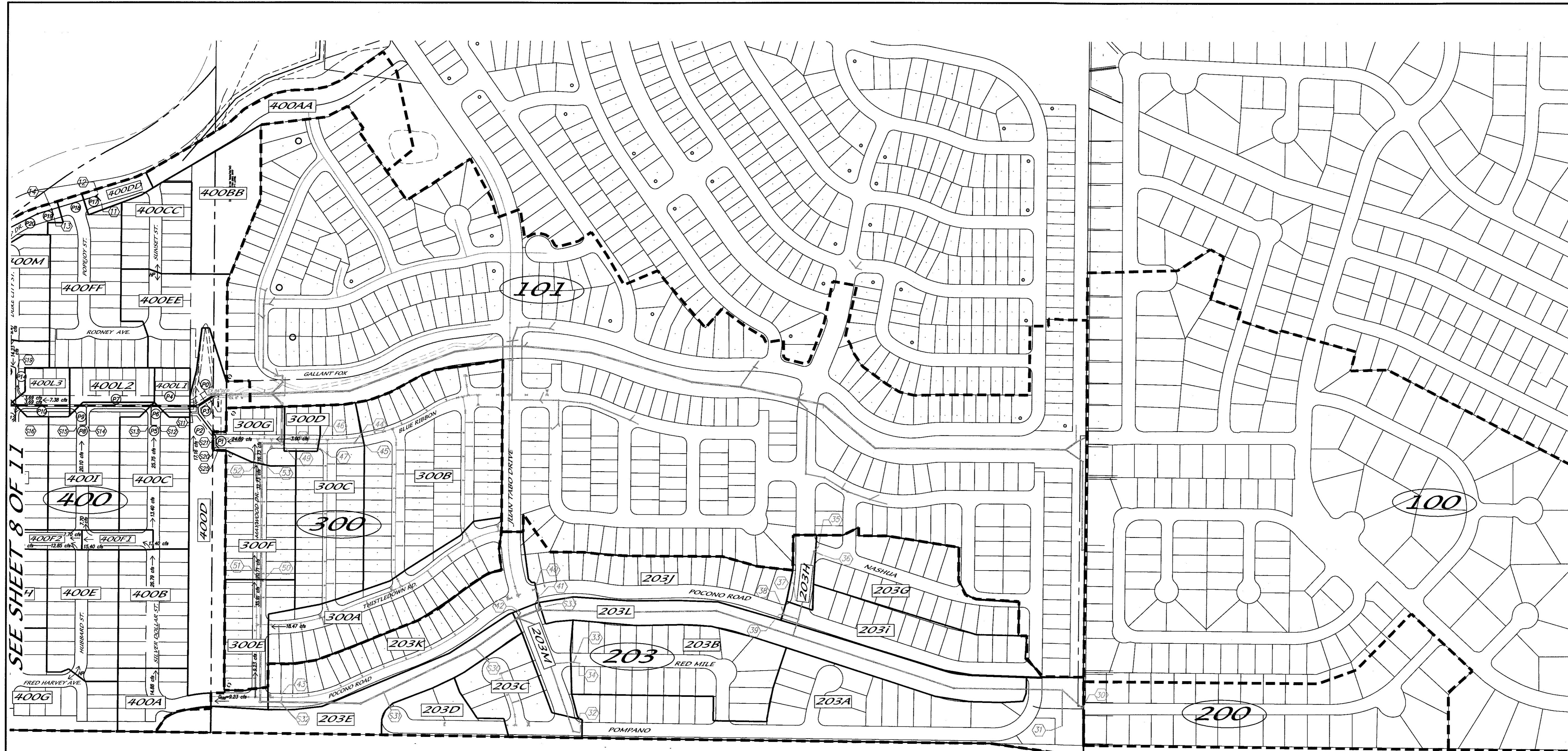
CITY PROJECT NO. ZONE MAP NO. SHEET OF
M-21-Z 7 10

HYDROLOGY SUMMARY TABLE																
HYDROLOGY				Street flows				Inlet Calcs				Split Flows				
AHYMO BASIN ID	SUB-BASIN ID	AREA (AC)	Peak 100-YR Flow Q ₁₀₀ (cfs)	Location	Curb Type	Slope (%)	Depth (ft)	Velocity (fps)	Energy (ft)	Inlet #	Intercepted (cfs)	By-pass (cfs)	Path 1 Downstrm ID	Flow (cfs)	Path 2 Downstrm ID	Flow (cfs)
400		77.70	343.61													
400AA	3.18	14.05	14.05	Rocky Top	Std. (8")	8.0	0.29	5.5	0.76	-	0.00	14.05	400DD	14.05	-	-
400BB	2.45	10.82	10.82	Trail	n/a	-	-	-	-	-	0.00	10.82	400DD	10.82	-	-
400CC	1.89	8.35	8.35	Sunset St	Roll (4")	3.6	0.23	3.8	0.45	-	0.00	8.35	400DD	8.35	-	-
400DD	0.44	1.94	35.16	Sunset St	Std. (8")	1.2	0.53	3.1	0.68	11 & 12	11.80	23.36	400FF	23.36	-	-
400EE	2.87	12.68	12.68	Sunset St	Roll (4")	1.0	0.33	2.5	0.43	-	0.00	12.68	400FF	12.68	-	-
400FF	4.13	18.24	30.92	Popejoy	Std. (8")	3.6	0.42	5.2	0.84	-	-	-	-	-	-	-
			54.28	Rocky Top	Std. (8")	1.2	0.60	4.1	0.86	13 & 14	16.00	38.28	400GG	38.28	-	-
400GG	1.16	5.12	43.40	Rocky Top	Std. (8")	2.1	0.49	4.9	0.86	-	0.00	43.40	400P	43.40	-	-
400A	1.27	5.61	14.84	Silver Dollar St	Std. (8")	2.0	0.32	3.6	0.52	-	0.00	14.84	400B	14.84	-	-
400B	2.68	11.84	26.68	Silver Dollar St	Std. (8")	2.0	0.43	4.0	0.68	-	0.00	26.68	400F1	13.34	400C	13.34
400C	2.78	12.28	25.62	Silver Dollar St	Std. (8")	2.0	0.43	4.0	0.68	S12 & S13	25.62	0.00	400L1	0.00	-	-
400D	3.96	17.05	17.05	Eastern Bndy	n/a	-	-	-	-	S11	17.05	0.00	400L1	0.00	-	-
400L1	0.55	2.43	2.43	Sandia Sunset	Roll (4")	0.5	0.22	1.4	0.25	S22	2.43	0.00	-	-	-	-
400L2	0.84	3.71	3.71	Sandia Sunset	Roll (4")	2.6	0.23	3.1	0.38	-	0.00	3.71	400L3	3.71	-	-
400L3	0.82	3.62	7.33	Sandia Sunset	Roll (4")	3.4	0.28	4.1	0.54	-	0.00	7.33	400N	3.67	400J	3.67
400E	2.89	12.77	12.77	Hubbard	Roll (4")	2.0	0.30	3.4	0.48	-	0.00	12.77	400F2	12.77	-	-
400F1	0.45	1.99	15.33	Manzano Vista	Std. (8")	3.2	0.34	4.2	0.61	-	0.00	15.33	400F2	7.66	400I	7.66
400F2	0.46	2.03	22.46	Manzano Vista	Std. (8")	3.2	0.39	4.3	0.68	-	0.00	22.46	400F3	11.23	400J	11.23
400F3	0.26	1.15	35.22	Manzano Vista	Std. (8")	3.2	0.44	4.2	0.71	-	0.00	35.22	400K1	17.61	400T	17.61
400G	3.31	14.62	14.62	Duke City	Roll (4")	2.0	0.33	3.4	0.51	-	0.00	14.62	400H	14.62	-	-
400H	1.86	8.22	22.84	Duke City	Std. (8")	2.0	0.42	3.9	0.66	-	0.00	22.84	400F3	22.84	-	-
400I	1.29	12.32	19.99	Hubbard	Std. (8")	2.0	0.40	3.8	0.62	S14 & S15	19.99	0.00	400L1	0.00	-	-
400J	2.79	12.32	27.22	Duke City	Std. (8")	4.0	0.46	4.0	0.71	S16 & S17	27.22	0.00	-	-	-	-
400K1	0.41	1.81	19.42	Rocky Top	Std. (8")	1.9	0.41	3.7	0.62	-	0.00	19.42	400K2	9.71	400AG	9.71
400K2	0.41	1.81	11.52	Rocky Top	Std. (8")	1.9	0.35	3.1	0.50	-	0.00	11.52	400P	5.76	400AJ	5.76
400M	2.13	9.41	9.41	Duke City	Roll (4")	0.5	0.33	1.8	0.38	-	0.00	9.41	400N	9.41	-	-
400N	1.07	4.73	17.80	Duke City	Std. (8")	0.5	0.44	2.0	0.50	S18 & S19	17.80	0.00	-	-	-	-
400P	0.70	3.09	52.26	Rocky Top	Sump	-	-	-	-	S1 & S2	52.26	0.00	-	-	-	-
400Q	1.93	8.53	8.53	Canyon Wren Ct	Roll (4")	0.5	0.33	1.8	0.38	-	0.00	8.53	400R	8.53	-	-
400R	2.08	9.19	17.71	Harris Hawk	Std. (8")	4.0	0.36	4.7	0.70	-	0.00	17.71	400S	8.86	400V	8.86
400S	2.17	9.59	18.44	Burrowing Owl	Roll (4")	2.0	0.35	3.6	0.55	-	0.00	18.44	400U	18.44	-	-
400T	1.90	8.39	26.00	Manzano Vista	Std. (8")	3.2	0.41	4.6	0.74	15 & 16	11.80	14.20	400U	14.20	-	-
400U	1.60	7.07	39.71	Manzano Vista	Std. (8")	3.2	0.47	5.5	0.94	17 & 18	14.20	25.51	400X	25.51	-	-
400V	3.71	16.39	25.24	White Dove	Std. (8")	2.0	0.43	4.0	0.68	-	0.00	25.24	400AC	12.62	400W	12.62
400W	0.78	3.45	16.07	White Dove	Std. (8")	2.0	0.38	3.5	0.57	-	0.00	16.07	400X	16.07	-	-
400X	0.29	1.28	42.86	Manzano Vista	Std. (8")	3.1	0.47	5.7	0.97	-	0.00	42.86	400Z	21.43	400Y	21.43
400Y	0.93	4.11	25.54	Rock Squirrel	Std. (8")	2.0	0.43	4.0	0.68	-	0.00	25.54	400AH	25.54	-	-
400Z	1.54	6.80	28.23	Manzano 40' FF	Std. (8")	1.0	0.42	4.1	0.68	-	0.00	28.23	400AF	28.23	-	-
400AB	2.98	13.16	13.16	Lobo Trot	Roll (4")	1.0	0.33	2.5	0.43	S7 & S8	13.16	0.00	-	-	-	-
400AC	1.43	6.32	18.94	Running Bear	Std. (8")	6.0	0.31	5.5	0.78	-	0.00	18.94	400AD	18.94	-	-
400AD	2.64	11.66	58.83	Cougar Run 40' FF	Std. (8")	1.0	0.61	4.0	0.86	S23 & S24	58.83	0.00	-	-	-	-
400AG	2.83	12.50	22.21	Rock Squirrel	Std. (8")	3.4	0.38	4.6	0.71	-	0.00	22.21	400AI	11.10	400AH	11.10
400AH	0.24	1.06	37.70	Rock Squirrel	Sump	-	-	-	-	S5 & S6	37.70	0.00	-	-	-	-
400AI	0.34	1.50	12.61	Sandia Sunset	Std. (8")	1.0	0.38	2.5	0.48	-	0.00	12.61	400AJ	12.61	-	-
400AJ	1.95	8.61	26.96	Sandia Sunset	Std. (8")	1.4	0.52	4.4	0.82	S3 & S4	26.96	0.00	-	-	-	-
		77.70	343.61								352.84					

LEGEND

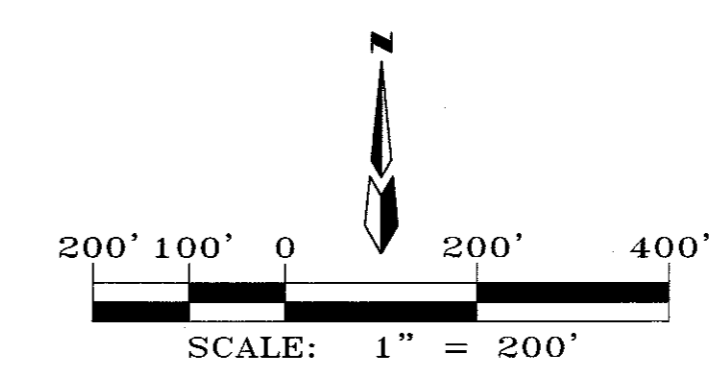
- AHYMO BASIN BOUNDARY
- SUB-BASIN BOUNDARY
- NEW RCP STORM DRAIN
- AHYMO BASIN NUMBER
- SUB-BASIN NUMBER
- NEW INLET NUMBER
- EXISTING INLET NUMBER
- NEW RCP PIPE NUMBER
- HIGH POINT (WATERBLOCK)

Storm Drain System Design									
STREET NAME	INLET #	Q (cfs)	PIPE #	SLOPE %	Q ₁₀₀ (cfs)	PIPE CAPACITY	PIPE DIA (IN)	AREA OF PIPE	VELOCITY (ft/sec)
Gallant Fox			Existing	2.12	848.57	930.11	84	38.48	22.05
Blue Ribbon	S20	12.44	P1		12.45				
Tract J	S21	12.45	P2	15.00	24.89	87.61	24	3.14	7.92
Tract J	S11	17.05	P3	1.00	41.94	66.69	36	7.07	5.93
Sandia Sunset	P4		P4	2.00	890.51	903.40	84	38.48	23.14
Silver Dollar	S12	12.81	P5	2.00	12.81	14.85	18	1.77	7.25
Silver Dollar	S13	12.81	P6	2.00	25.62	31.69	18	1.77	14.50
Sandia Sunset	P7		P7	2.20	916.13	947.49	84	38.48	23.81
Hubbard	S14	10.00	P8	2.00	10.00	14.85	18	1.77	5.66
Hubbard	S15	9.99	P9	2.00	19.99	31.99	18	1.77	11.31
Sandia Sunset	P10		P10	7.00	936.12	1690.11	84	38.48	24.32
Duke City	S16	13.61	P11	1.50	12.22	12.86	18	1.77	6.92
Duke City	S17	13.61	P12	1.20	24.44	24.78	24	3.14	7.78
Duke City	S18	8.90	P13	1.00	8.90	10.50	18	1.77	5.04
Duke City	S19	8.90	P14	1.00	17.80	22.62	24	3.14	5.67
Sandia Sunset	P15		P15	4.00	978.36	1277.60	84	38.48	25.42
Rocky Top	P16		P16	1.50	5.90	12.86	18	1.77	3.34
Rocky Top	P17		P17	2.00	11.80	14.85	24	3.14	3.76
Rocky Top	P18		P18	2.00	8.00	14.85	18	1.77	4.53
Rocky Top	P19		P19	1.50	27.80	27.70	24	3.14	8.85
Rocky Top	P20		P20	1.50	26.13	27.70	24	3.14	8.32
Rocky Top	P21		P21	0.50	80.06	101.54	48	12.57	6.37
Sandia Sunset	P22		P22	1.50	1023.05	1119.91	96	50.27	20.35
Sandia Sunset	P23		P23	1.00	13.49	22.62	24	3.14	4.29
Sandia Sunset	P24		P24	1.00	26.98	22.62	24	3.14	8.59
Sandia Sunset	P25		P25	1.00	62.35	66.69	36	7.07	8.82
Rock Squirrel	P26		P26	2.00	19.02	31.99	24	3.14	6.05
Rock Squirrel	P27		P27	1.00	100.22	100.60	42	9.62	10.42
Rock Squirrel	P28		P28	1.00	100.22	100.60	42	9.62	10.42
Manzano Vista	P29		P29	2.00	5.90	14.85	18	1.77	3.34
Manzano Vista	P30		P30	2.00	11.80	18.61	18	1.77	6.88
Manzano Vista	P31		P31	2.00	7.10	14.85	18	1.77	4.02
Manzano Vista	P32		P32	3.14	26.00	40.08	24	3.14	8.28
Manzano Vista	P33		P33	1.00	126.22	143.60	48	12.57	10.04
Lobo Trot	P34		P34	1.00	6.58	10.50	18	1.77	3.72
Lobo Trot	P35		P35	1.00	13.16	22.62	24	3.14	4.19
Manzano Vista	P36		P36	1.00	139.38	143.60	48	12.57	11.09
Cougar Run St	S23 & S24	58.83	P37	1.10	198.21	206.30	54	15.90	12.46
40' RCP into Arroyo			P40	1.00	139.94	143.60	48	12.57	11.14
SWQ @ 48" RCP			P41	1.00	58.27	66.69	36	7.07	8.24



HYDROLOGY SUMMARY TABLE																						
AHYMO BASIN ID	SUB-BASIN ID	AREA (Ac)	HYDROLOGY				Street flows				Split Flows											
			Ground Cover (%)	Peak 100-YR Flow Q ₁₀₀ (cfs)	Inlet	Surface	Slope (%)	Depth (ft)	Velocity (fps)	Energy (ft)	Inlet ID	Intercepted	By-pass	Path 1	Path 2							
100		89.10	0.13922	8	18	35	39	328.22														
101	100.1	66.80	0.10438	0	19	39	42	282.50														
200		9.00	0.01406	0	20	40	40	37.61														
201		76.30	0.01828	100	0	0	0	27.64														
203		42.50	0.06641	0	22	45	33	172.59														
203A		8.73						35.45	47.09	Pompano Pl SE	2.13	0.51	5.1	0.9	32	16.00	31.09	203M	15.54	203C	15.54	
203B		5.05						20.50	20.50	Red Mile	3.00	0.38	4.3	0.7	33 & 34	11.80	17.10	203M	17.10			
203C		2.19						8.89	16.66	Retama Ct	2.00	0.49	sump	sump	S30	16.66	0.00					
203D		1.40						5.90	13.67	Pompano Pl	4.00	0.40	sump	sump	S31	13.67	0.00					
203E		3.33						13.51	0.00	trail	-	-	sump	sump	S32	13.51	0.00					
203G		3.95						16.00	16.00	Nashua	3.00	0.36	4.0	0.6	35 & 36	9.80	6.20	203H	16.20			
203H		0.50						2.03	8.26	Timonium	1.40	0.40	3.0	0.5	37	5.10	3.16	203J	3.16			
203I		3.30						13.50	16.66	Pocono	2.00	0.39	3.5	0.6	38 & 39	13.60	3.06	203J	3.06			
203J		4.04						16.40	19.46	Pocono	4.00	0.36	4.5	0.7	40 & 41	14.00	5.46	203K	5.46			
203L		4.00						16.25	20.18	trail	-	-	sump	sump	S33	16.25	0.00					
203M		1.25						5.07	22.10	Juan Tabo Drive	1.00	0.58	4.0	0.8	42	9.80	12.30	203K	12.30			
203K		4.40						17.90	35.66	Pocono	1.00	0.46	3.2	0.6	43	17.20	18.46	300E	9.23	400A	9.23	
300		22.30	0.03484	0	14	29	57	99.75														
300A		4.13						18.47	18.47	Thistledown Rd	3.00	3.50	4.0	3.7		0.00	17.47	300E	18.47			
300B		8.00						35.78	35.78	Blue Ribbon Rd	2.00	0.49	4.6	0.8	44 & 45	18.00	17.78	300C	17.78			
300C		3.96						17.70	35.50	Pleasanton Dr	1.88	0.49	4.5	0.8	46 & 47	18.00	17.50	300D	17.50			
300D		0.52						2.33	19.80	Blue Ribbon Rd	3.43	0.38	4.5	0.7	48 & 49	16.80	3.00	300G	3.00			
300E		1.84						8.21	35.91	Maywood Dr	1.00	0.51	3.7	0.7	50 & 51	15.20	20.71	300F	20.71			
300F		2.69						12.02	32.73	Maywood Dr	1.00	0.50	3.7	0.7	52 & 53	16.00	16.73	300G	16.73			
300G		1.15						5.16	24.89	Out To Basin 400	-	-	-	-		24.89	400.00	400.00	24.89			

- LEGEND**
- AHYMO BASIN BOUNDARY
 - SUB-BASIN BOUNDARY
 - NEW RCP STORM DRAIN
 - AHYMO BASIN NUMBER
 - SUB-BASIN NUMBER
 - NEW INLET NUMBER
 - EXISTING INLET NUMBER
 - NEW RCP PIPE NUMBER
 - HIGH POINT (WATERBLOCK)

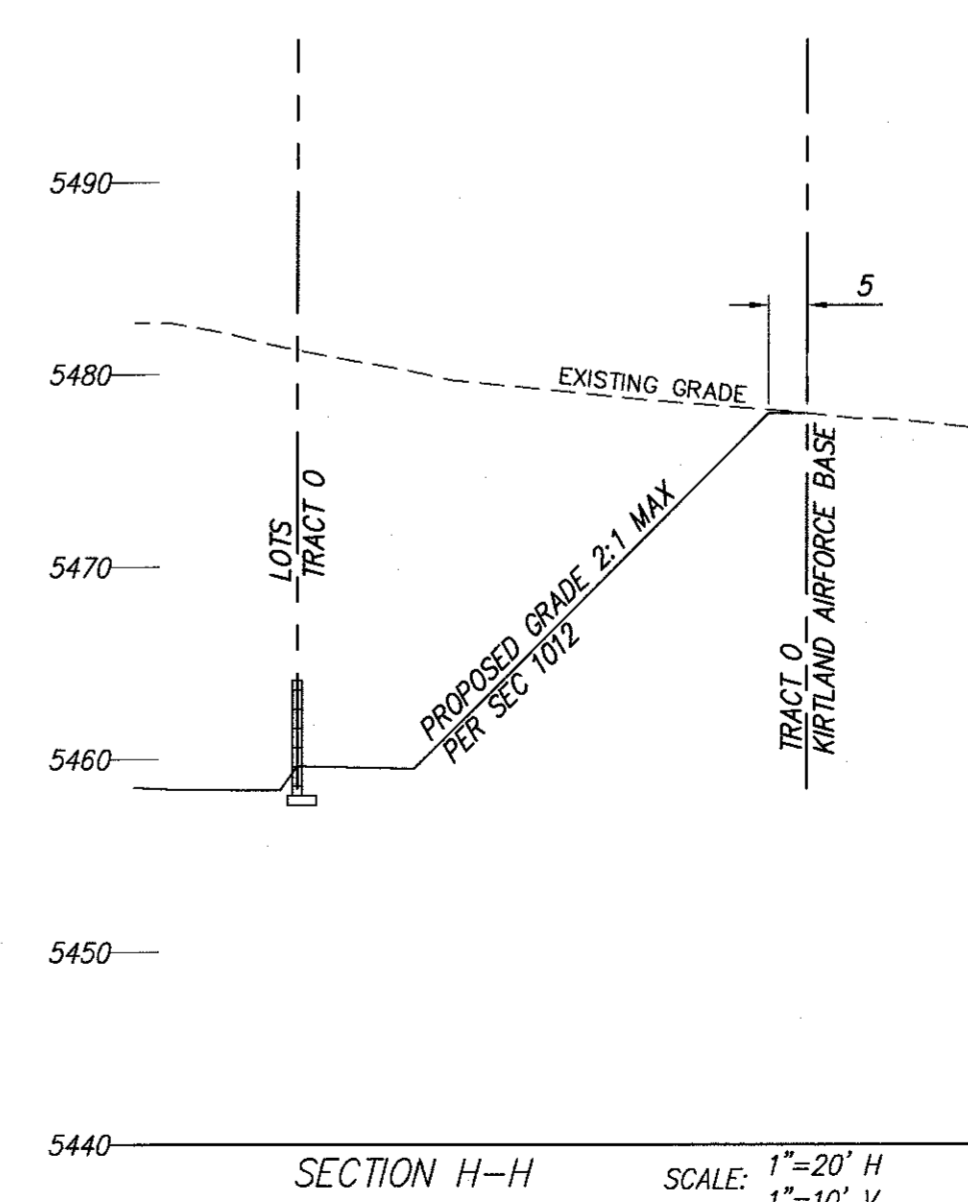
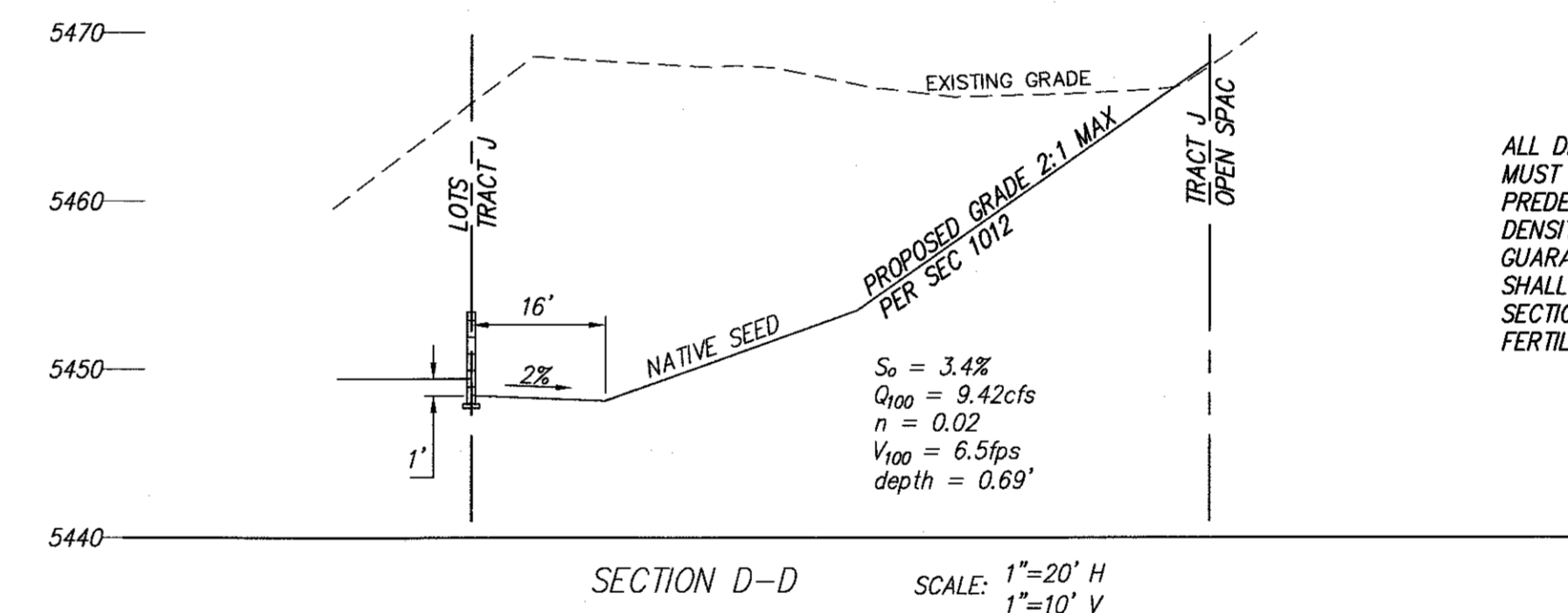
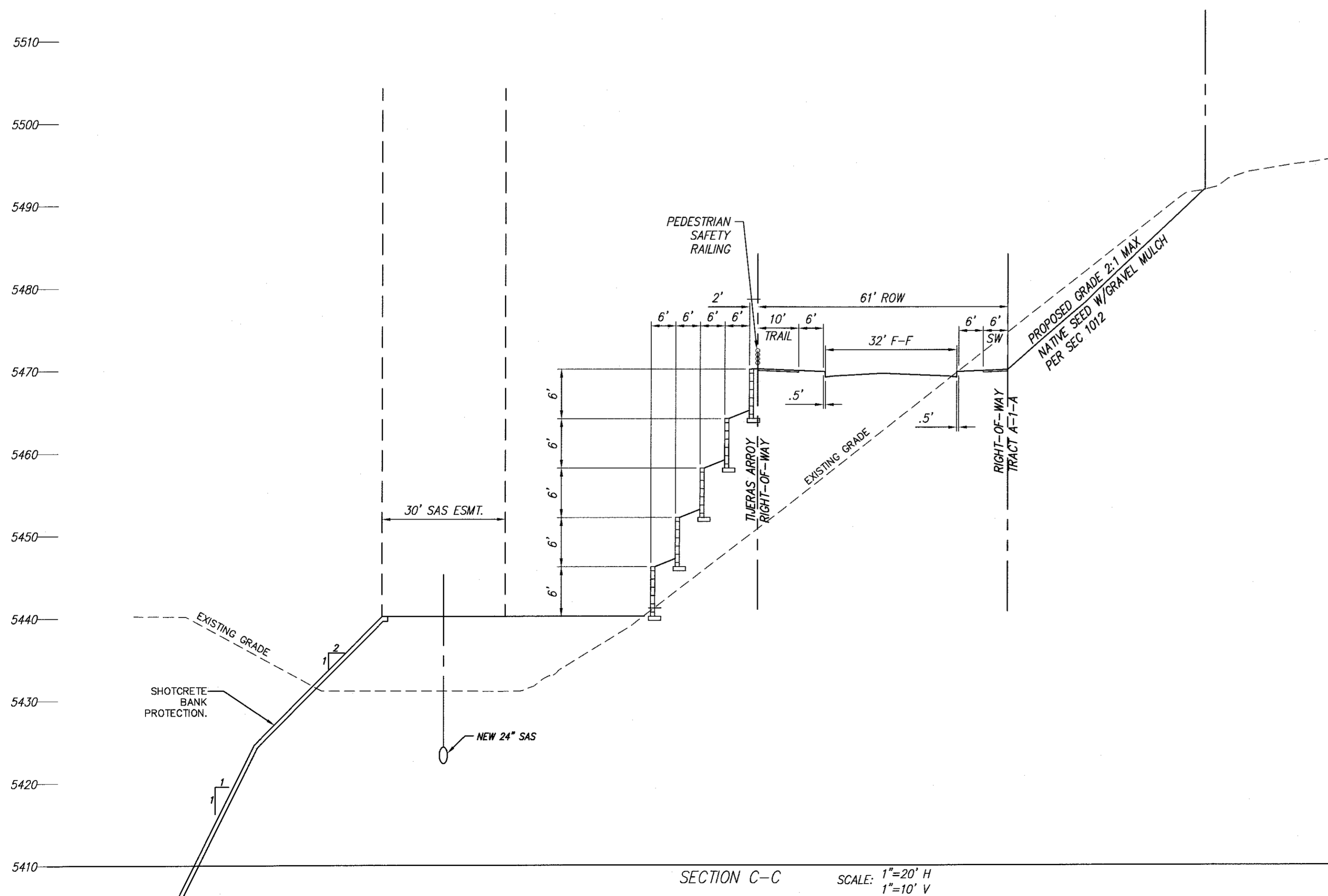
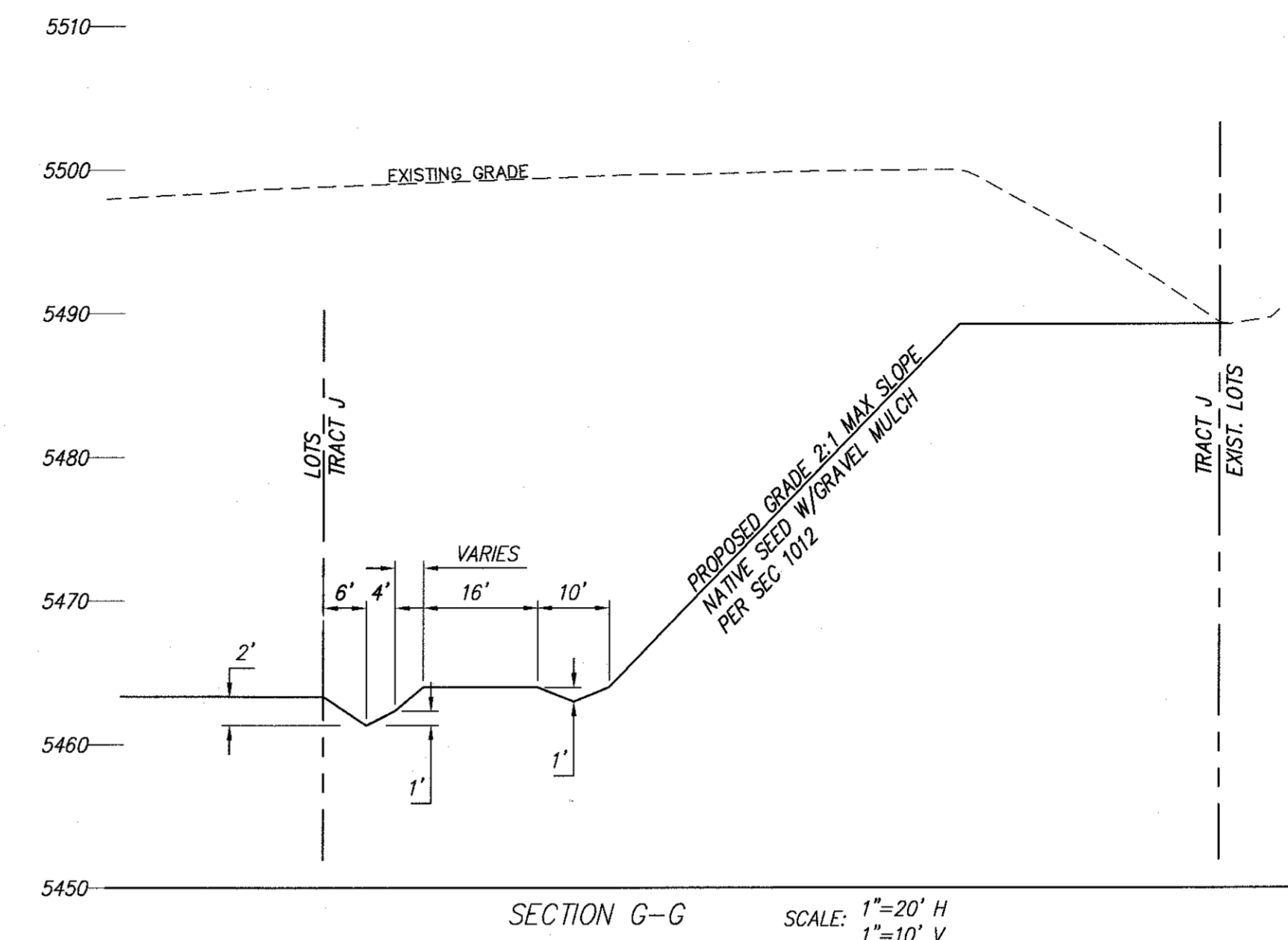
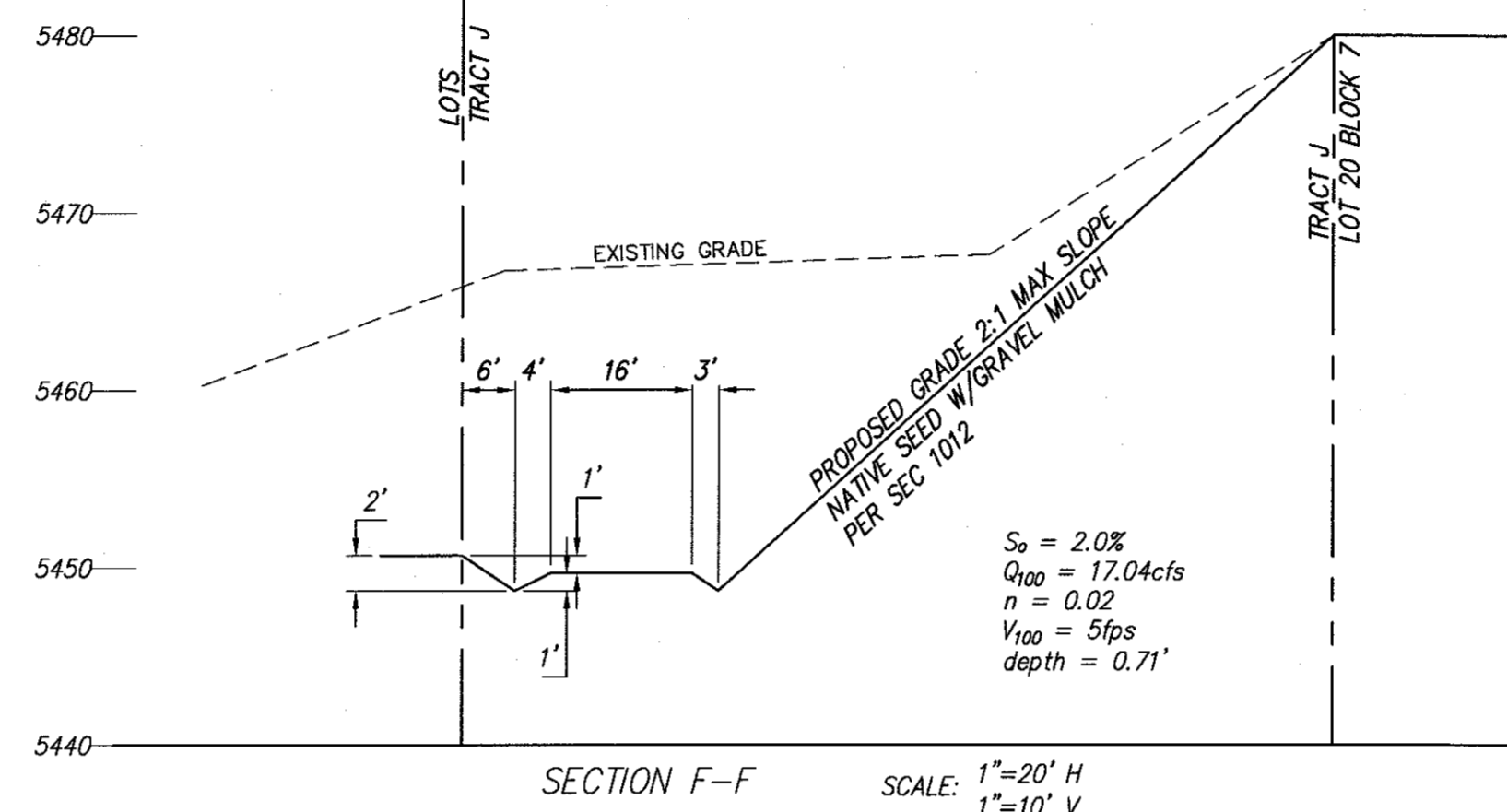
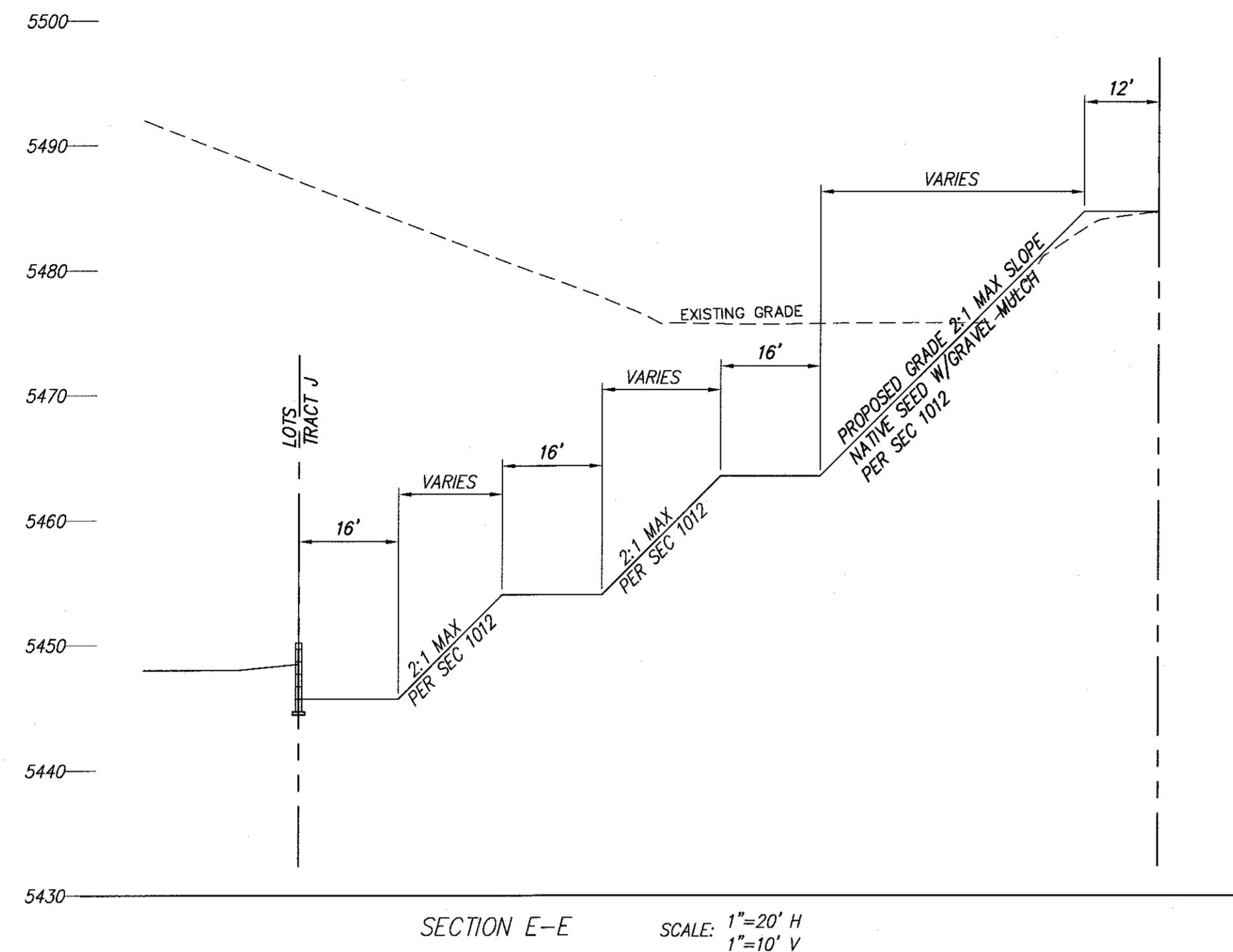


ENGINEER'S SEAL		SURVEY INFORMATION		AS BUILT INFORMATION	
	DATE	NO.	BY	CONTRACTOR	DATE
	REVISIONS	NO.	BY	STAMPED BY	DATE
DESIGNED BY	DATE	NO.	BY	FIELD CHECKED BY	DATE
DRAWN BY	DATE	NO.	BY	APPROVED BY	DATE
CHECKED BY	DATE	NO.	BY	RECORDED BY	DATE

JUAN TABO HILLS ESTATES
OFF-SITE DRAINAGE SUB-BASINS 1

dmg MARK GOODWIN & ASSOCIATES, P.A.
CONSULTING ENGINEERS
P.O. BOX 90606
ALBUQUERQUE, NEW MEXICO 87199
OFFICE (505) 828-2200, FAX (505) 797-9539

CITY PROJECT NO. _____ ZONE MAP NO. _____ SHEET OF _____
M-21-Z 9 10



ALL DISTURBED AREA IN TRACT J AND O MUST BE REVEGETATED TO 70% OF PREDEVELOPMENT GROUND COVER DENSITY PRIOR TO RELEASE OF FINANCIAL GUARANTEES. NATIVE SEED AND MULCH SHALL BE APPLIED IN ACCORDANCE WITH SECTION 1012 AND WILL INCLUDE FERTILIZER AND SUPPLEMENTAL WATER.

AS BUILT INFORMATION	
CONTRACTOR	WORK
STAMPED BY	DATE
ACCEPTANCE BY	DATE
FIELD GATION BY	DATE
DRAWINGS BY	DATE
CORRECTED BY	DATE
MICRO-FILM INFORMATION	DATE
RECORDED BY	NO.

BENCH MARKS	
STATION "5-422" IS LOCATED 8.7 M. SE OF DOWNTOWN ALBUQUERQUE ON THE EAST SIDE OF THE MUNICIPAL LIMITS LINE IN THE FOUR HILLS SUBDIVISION AREA. STATION IS 600 FT. EAST OF MUNICIPAL LIMITS LINE. 72.9' SE OF POWER POLE #6317 & 106.0' NW OF POWER POLE #60.	DATE
STATION IS A STANDARD ACS BRASS DISK SET IN A CONCRETE MONUMENT IN THE GROUND. STATION IS STAMPED "5-422".	DATE
X= 1,564,263.207, Y= 1,425,762.595, (NAD 83), Z= 5597.219 (NAVD 1989).	DATE

SURVEY INFORMATION	
FIELD NOTES	NO.
BY	DATE

ENGINEER'S SEAL	
NO.	DATE
REVISIONS	DATE
DESIGN	DATE
DESIGNED BY	DATE
DRAWN BY	DATE
CHECKED BY	DATE

JUAN TABO HILLS ESTATES
GRADING & DRAINAGE PLAN

dmg MARK GOODWIN & ASSOCIATES, P.A.
 CONSULTING ENGINEERS
 P.O. BOX 90606
 ALBUQUERQUE, NEW MEXICO 87199
 OFFICE (505) 828-2200, FAX (505) 797-9539

CITY PROJECT NO. ZONE MAP NO. SHEET OF
M-21-Z 10 10