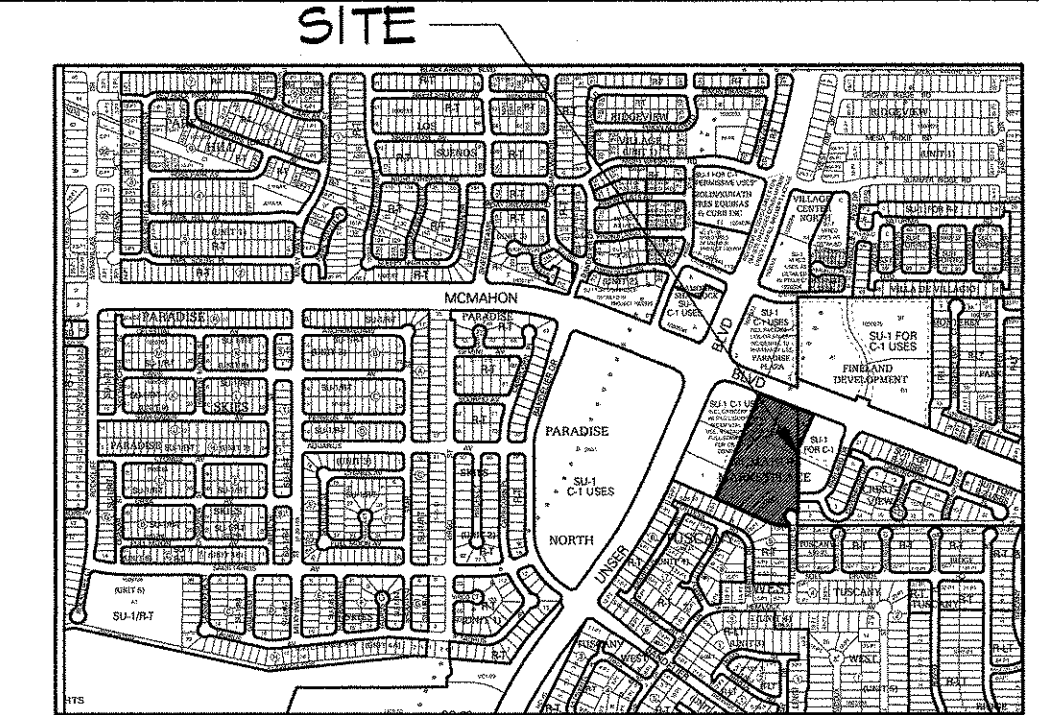
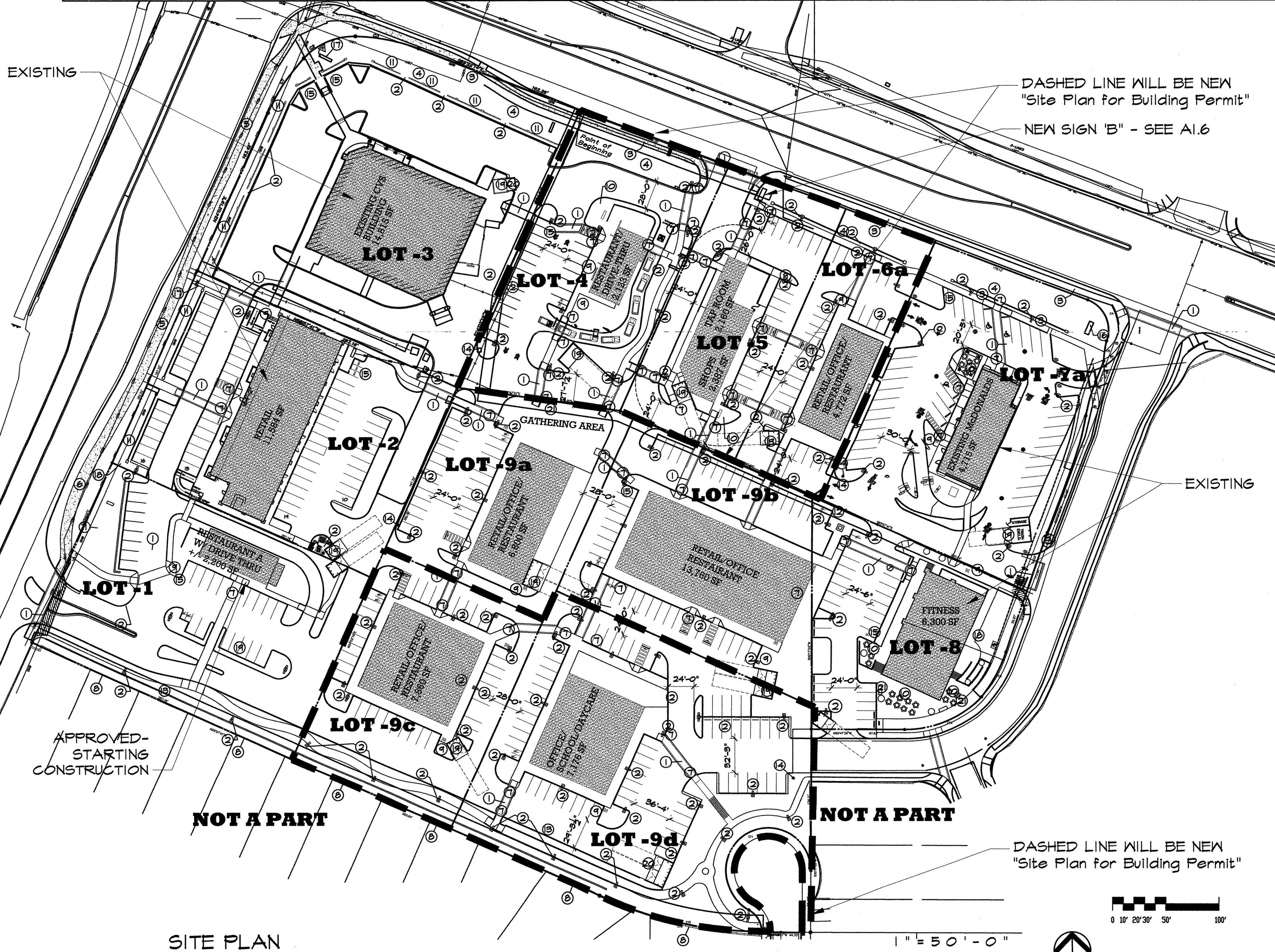


LEGAL DESCRIPTION	VARIES; REFER TO DESCRIPTION BELOW												
TRACT NUMBER	LOT-1	LOT-2	LOT-3	LOT-4	LOT-5	LOT-6a	LOT-7a	LOT-8	LOT-9a	LOT-9b	LOT-9c	LOT-9d	TOTAL
TOTAL ACRES:	AREA = 1.14 AC	AREA = 1.2049 AC	AREA = 1.6549 AC	AREA = 0.9181 AC	AREA = 0.6886 AC	AREA = 3.927 AC	AREA = 1.292 AC	AREA = 0.6767 AC	AREA = 0.7127 AC	AREA = 0.4648 AC	AREA = 0.8055 AC	AREA = 1.35 AC	
EXISTING ZONING:	VARIES; REFER TO APPLICATION PAGE												
PROPOSED ZONING:	VARIES; REFER TO APPLICATION PAGE												
BLDG. SIZE/ REG. DINING SEATS	3,000 SF / 100 SEATS	11,584 SF / NA	16,091 SF / NA	2,123 SF / 52 SEATS	4,547 SF / 80 SEATS & 1/200	4,712 SF	4,715 SF / 120 SEATS	6,500 SF / 106 CL #1/3	6,800 SF	15,160 SF	7,860 SF	7,716 SF	
FAR:	.06	.222	.222	.0785	.1516	.0448	.0878	.21	.2140	.3274	.2240	.1066	
PROPOSED # OF STRUCTURES:	1	1	1	1	1	1	1	1	1	1	1	1	
PROPOSED USE:	RESTAURANT W/ DRIVE THRU	SHOPS/RETAIL-FOOD-OFFICE	DRUG STORE	RESTAURANT W/ DRIVE THRU	SHOPS/RETAIL-FOOD-OFFICE	SHOPS/RETAIL-FOOD-OFF.	RESTAURANT W/ DRIVE THRU	FITNESS CENTER/ TENANT	SHOPS/RETAIL-FOOD-OFFICE	SHOPS/RETAIL-FOOD-OFFICE	SHOPS/RETAIL-FOOD-OFFICE	OFFICE/SCHOOL/DAYCARE	
TOTAL PARKING PROVIDED:	57 SPACES	57 SPACES	70 SPACES	20 SPACES	27 SPACES	27 SPACES	33 SPACES	27 SPACES	26 SPACES	42 SPACES	38 SPACES	63 SPACES	494 SPACES PROV.
TOTAL PARKING REQ. (INC. ENPL.):	50 SPACES	56 SPACES	75 SPACES	19 SPACES (1 PER 4 SEATS)	92 SPACES	24 SPACES	30 SPACES (1 PER 4 SEATS)	56 SPACES	54 SPACES	64 SPACES	58 SPACES	17 SPACES (241/500SF)	454 SPACES REG.
DIFFERENCE (-2):	+7 SPACES	+1 SPACES	-5 SPACES	1 SPACES	-15 SPACES	+3 SPACES	+3 SPACES	-4 SPACES	-3 SPACES	-27 SPACES	+10 SPACES	+46 SPACES	+5 SPACES
HC PROVIDED:	2 HC (INC. 2 VAN ACCESSIBLE)	4 HC (INC. 4 VAN ACCESSIBLE)	4 HC (INC. 2 VAN ACCESSIBLE)	1 HC, VAN ACCESSIBLE	4 HC (INC. 4 VAN ACCESSIBLE)	2 HC (INC. 2 VAN ACCESSIBLE)	3 HC (INC. 3 VAN ACCESSIBLE)	2 HC (INC. 2 VAN ACCESSIBLE)	10 HC (INC. 10 VAN ACCESSIBLE)	4 HC (INC. 4 VAN ACCESSIBLE)	9 HC (INC. 2 VAN ACCESSIBLE)	2 HC (INC. 2 VAN ACCESSIBLE)	41 HC PROV.
HC REQUIRED:	2 HC SPACES	4 HC SPACES	4 HC SPACES	1 HC SPACE	2 HC SPACES	1 HC SPACE	1 HC SPACE	5 HC SPACE	5 HC SPACES	4 HC SPACES	5 HC SPACES	1 HC SPACE	24 HC REQ.
BIKE SPACES PROVIDED:	5 BIKE SPACES	5 BIKE SPACES	5 BIKE SPACES	5 BIKE SPACES	4 BIKE SPACES	5 BIKE SPACES	5 BIKE SPACES	5 BIKE SPACES	5 BIKE SPACES	5 BIKE SPACES	5 BIKE SPACES	5 BIKE SPACES	62 BIKE PROV.
BIKE SPACES REQUIRED:	2 BIKE SPACES	5 BIKE SPACES	4 BIKE SPACES	1 BIKE SPACE	2 BIKE SPACES	1 BIKE SPACE	2 BIKE SPACES	2 BIKE SPACES	2 BIKE SPACES	2 BIKE SPACES	2 BIKE SPACES	2 BIKE SPACES	27 BIKE REQ.
MOTORCYCLE SPACES PROVIDED:	2 MOTORCYCLE SPACES	5 MOTORCYCLE SPACES	5 MOTORCYCLE SPACES	2 MOTORCYCLE SPACE	2 MOTORCYCLE SPACES	2 MOTORCYCLE SPACES	2 MOTORCYCLE SPACES	2 MOTORCYCLE SPACES	2 MOTORCYCLE SPACES	4 MOTORCYCLE SPACES	2 MOTORCYCLE SPACES	1 MOTORCYCLE SPACES	28 MC PROV.
MOTORCYCLE SPACES REQUIRED:	1 MOTORCYCLE SPACE	5 MOTORCYCLE SPACES	5 MOTORCYCLE SPACES	1 MOTORCYCLE SPACES	2 MOTORCYCLE SPACES	1 MOTORCYCLE SPACES	2 MOTORCYCLE SPACES	2 MOTORCYCLE SPACES	2 MOTORCYCLE SPACES	5 MOTORCYCLE SPACES	2 MOTORCYCLE SPACES	1 MOTORCYCLE SPACE	25 MC REQ.
MAX BUILDING HEIGHT:	26' TO TOP OF PARAPET	26' TO TOP OF PARAPET	26' TO TOP OF PARAPET	26' TO TOP OF PARAPET	26' TO TOP OF PARAPET	26' TO TOP OF PARAPET	26' TO TOP OF PARAPET	26' TO TOP OF PARAPET	26' TO TOP OF PARAPET	26' TO TOP OF PARAPET	26' TO TOP OF PARAPET	26' TO TOP OF PARAPET	

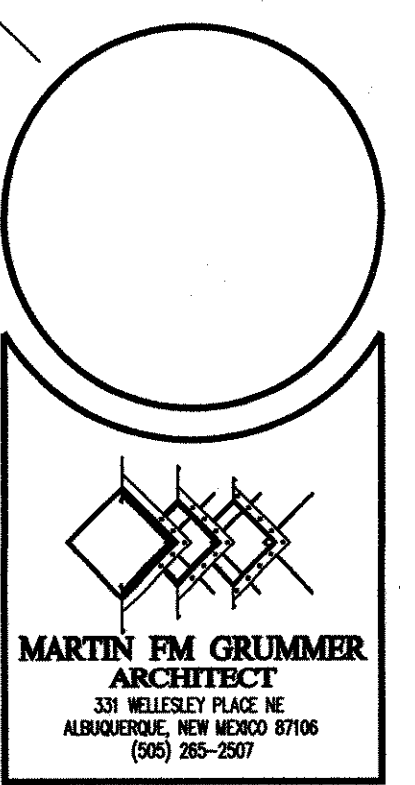
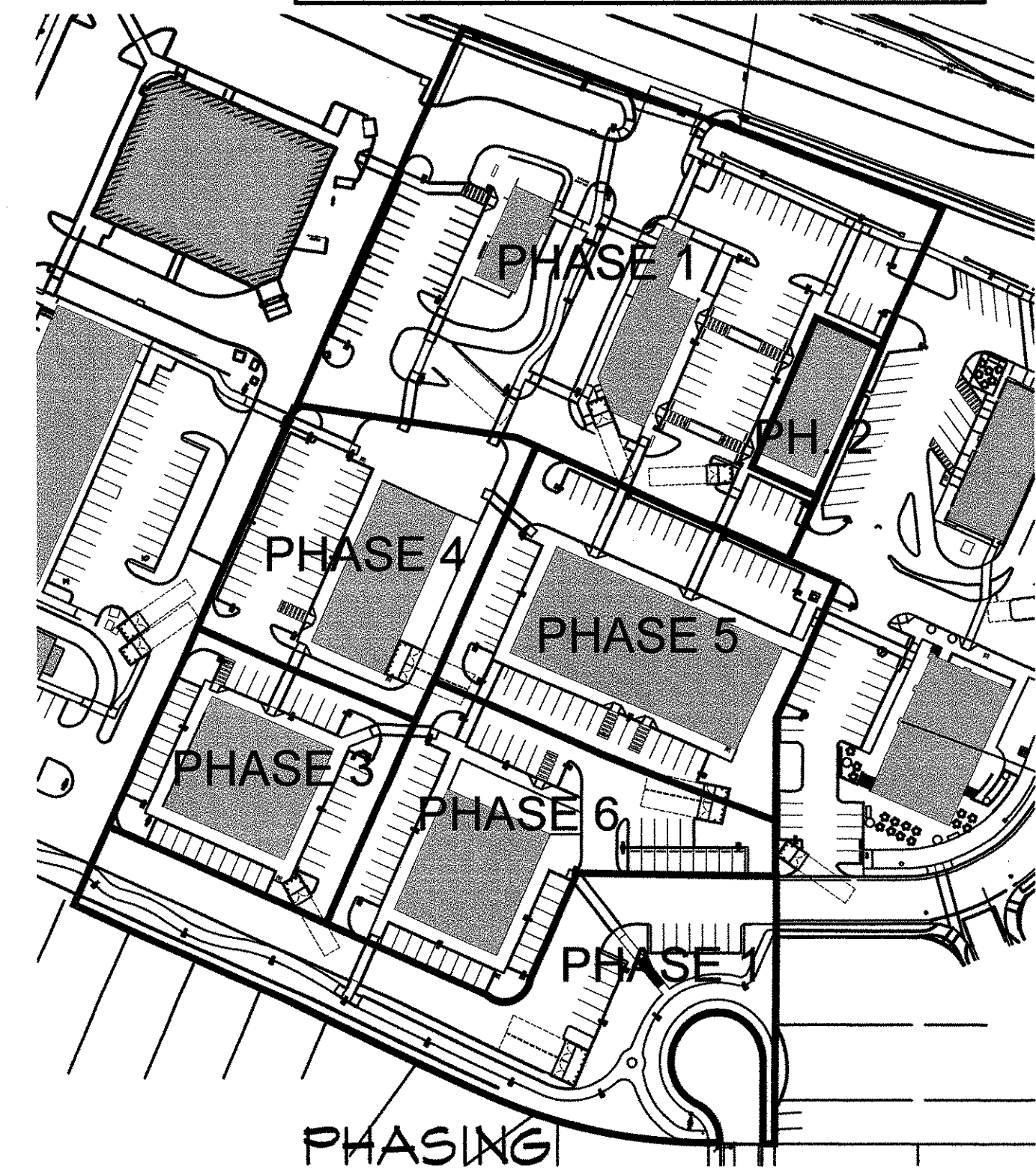


PROJECT NUMBER: 1005280
Application Number: 16 ETC-40080/17 DRB-70134

Is an Infrastructure List required? () Yes () No If yes, then a set of approved DRC plans with a work order is required for any construction within Public Right-of-Way or for construction of public improvements.

DRB SITE DEVELOPMENT PLAN APPROVAL:

<i>[Signature]</i>	8/6/17
Traffic Engineering, Transportation Division	Date
<i>[Signature]</i>	9-2-17
ABCWA	Date
<i>[Signature]</i>	8/2/17
Parks and Recreation Department	Date
<i>[Signature]</i>	9-2-2017
City Engineer	Date
<i>[Signature]</i>	8/2/2017
Environmental Health Department (conditional)	Date
<i>[Signature]</i>	7/2/17
State Waste Management	Date
<i>[Signature]</i>	8-21-2017
DRB Chairperson, Planning Department	Date



MCMAHON MARKET PLACE
 NEW SHELL BUILDING
 MCMAHON BLVD & UNSER BLVD NW
 ALBUQUERQUE, NM 87114
 SITE PLAN FOR BUILDING PERMIT

DATE: 1 AUG 2017
 DRAWN BY: MFMG
 CHECKED BY:
 VERIFIED BY:

REVISIONS

SHEET NO:
A1.1
 1 OF 18

ALL DIMENSIONS ARE TO BE FIELD VERIFIED. IF THERE ARE DISCREPANCIES, PLEASE NOTIFY THE ARCHITECT. DRAWINGS ARE NOT TO BE SCALED. USE DIMENSIONS FOR ACCURACY.