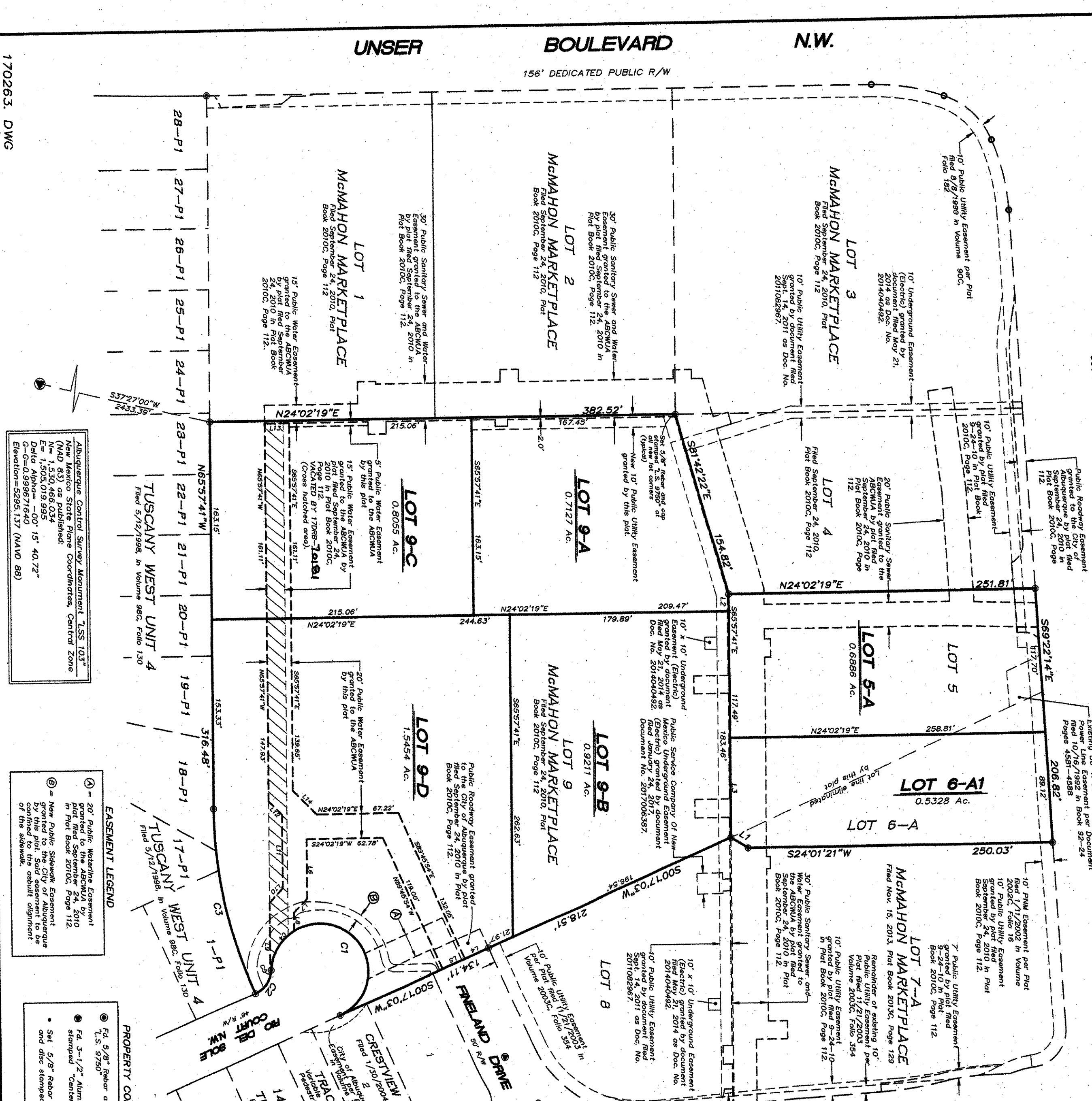


**PLAT OF
 LOTS 5-A, 6-A1 AND 9-A THRU 9-D
 McMAHON MARKETPLACE**
 (BEING A REPLAT OF LOTS 5, 6-A AND 9, McMAHON MARKETPLACE)
 WITHIN
 THE TOWN OF ALAMEDA GRANT
 IN
 PROJECTED SECTION 2, TOWNSHIP 11 NORTH, RANGE 2 EAST
 NEW MEXICO PRINCIPAL MERIDIAN
 CITY OF ALBUQUERQUE
 BERNALILLO COUNTY, NEW MEXICO
 JUNE 7, 2017



LOTS 5, 6-A AND 9, McMAHON MARKETPLACE ARE SUBJECT TO THE FOLLOWING:
 A. Covenants, Conditions, Restrictions and Cross-Easements Agreements (C), filed January 14, 2010, or their amendments, No. 201000856207, as amended by Supplemental Declaration No. 201100258389 and Amendment to Covenants, Conditions, Restrictions and Cross-Easements Agreements filed 03/09/2011, all contained in document No. 20110059254, record of Bernalillo County, New Mexico.
 B. Shared Parking Agreements, filed July 7, 2016, on Document No. 2016062771, recorded in Bernalillo County, New Mexico.

CURVE TABLE

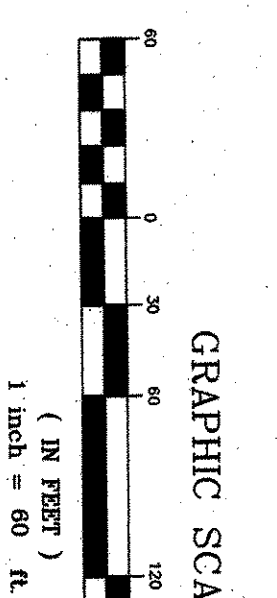
LINE	LENGTH	BEARING	DELTA
L1	16.67	S56°23'52" W	24.109°10'
L2	18.27	S58°32'28" W	53°52'28"
L3	80.11	S85°37'41" E	1°10'00"
L4	20.00	S00°17'02" W	23°38'37"
L5	48.64	S65°57'41" E	55°12'46"
L6	15.52	S20°57'41" E	12°08'05"
L7	15.52	S85°37'41" E	
L8	15.92	S85°37'41" E	
L10	15.52	N02°37'41" W	
L11	60.67	N65°37'41" W	
L12	15.52	S85°37'41" E	
L13	20.00	N24°02'19" E	
L14	27.08	N63°02'19" E	

CURVE TABLE

CURVE	LENGTH	RADIUS	TANGENT	CHORD	BEARING	DELTA
C1	26.24	25.00'	3.52	3.52	N31°18'07" W	63°39'11"
C2	156.92	580.00'	78.59	155.81'	S78°02'51" E	23°38'37"
C3	38.95	40.00'	21.8	37.43'	S34°59'14" E	55°12'46"
C5	4.61	22.00'	2.31	4.60'	N65°32'40" W	12°08'05"

EASEMENT LEGEND
 ① 30' Public Utilities Easement granted to the City of Albuquerque by Public Utility Order No. 112, dated 12/01/2006.
 ② New Public Sewer Easement granted to the City of Albuquerque by Public Utility Order No. 112, dated 12/01/2006.
 ③ 50' Public Sewer Easement granted to the City of Albuquerque by Public Utility Order No. 112, dated 12/01/2006.

PROPERTY CORNER LEGEND
 * 1/4" x 1/8" Aluminum Monument stamped 'Central-S, 12851'
 * 5/8" Rebar and cap or PK Nail and disc stamped 'L.S. 9750'



SHEET 3 OF 3
SURV-TEK, INC.
 Consulting Surveyors
 2944 Valley View Drive, N.W. Albuquerque, New Mexico 87114 Phone: 505-897-5586

170263 DWG