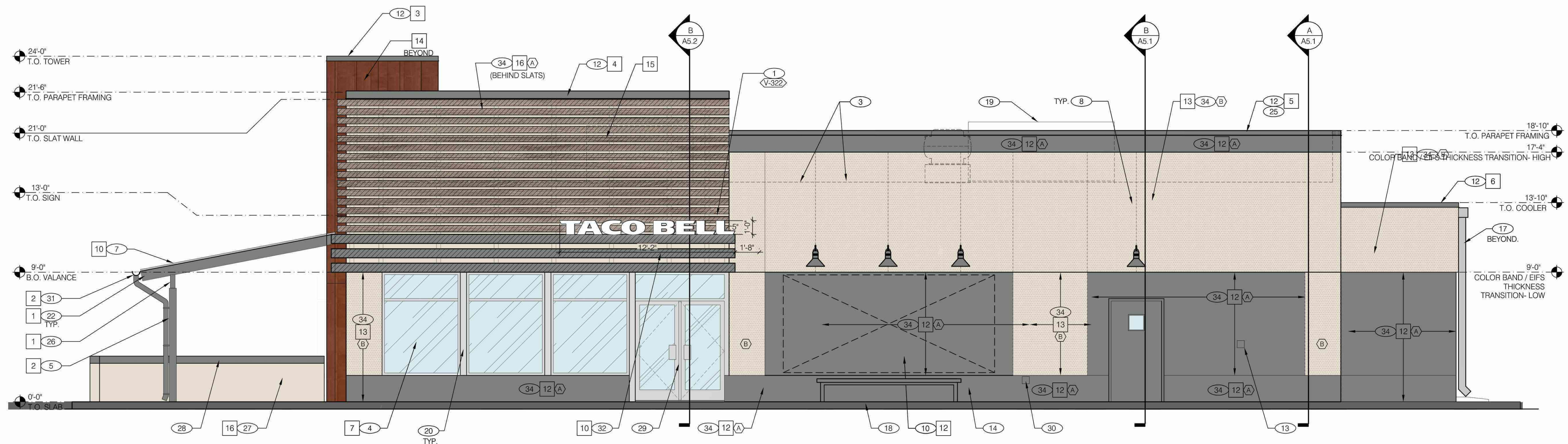


MARK D. MCCLUGGAGE AIA, CCS
 1525 E. Rte. 163, Suite 100
 Albuquerque, NM 87121
 Tel: (505) 265-5646
 Fax: (505) 265-5646
 www.gimv.com



(SOUTH) RIGHT SIDE ELEVATION 1/4"=1'-0" A

MISCELLANEOUS
 A. SEE SHT A1.1 "WINDOW TYPES" FOR WINDOW ELEVATIONS.
 B. E.I.F.S. TEXTURE SHALL BE "FINE".
 SEALERS (REFER TO SPECS):
 A. SEALANT AT ALL WALL AND ROOF PENETRATIONS.
 B. SEALANT AT ALL WINDOW AND DOOR FRAMES AT HEAD AND JAMB. DO NOT SEAL SILL @ WINDOWS.
 C. APPLY NEOPRENE GASKET (CONT.) BETWEEN BUILDING & CANOPY.
 CRITICAL DIMENSIONS:
 A. REQUIRED CLEAR OPENING WIDTH TO ENSURE COORDINATION WITH STANDARD SIGNAGE/BUILDING ELEMENTS DIMENSIONS.

NOTE: NO EXTERIOR SIGNS ARE WITHIN THE SCOPE OF WORK COVERED BY THE BUILDING PERMIT APPLICATION. THE GENERAL CONTRACTOR SHALL BE RESPONSIBLE FOR COORDINATING THE INSTALLATION OF ALL EXTERIOR SIGNS AND INSTALLATION OF REQUIRED BLOCKING AND ELECTRICAL CONNECTIONS FOR FINAL APPROVED SIGNS.
 [Pattern] DENOTES 2-1/2" THICK E.I.F.S.

(A) BASE THICKNESS - 1-1/2" THICK E.I.F.S.
 (B) BASE THICKNESS - 2-1/2" THICK E.I.F.S. [Pattern]

PROVIDE HIGH IMPACT MESH FOR E.I.F.S. THICKNESS UPTO A HEIGHT OF 5'-0"

NOT USED N.T.S. B

NOTE: SIGNAGE UNDER SEPARATE PERMIT

QTY	ITEM DESCRIPTION	ELEC
2	TACO BELL 'BELL' SIGN 4'-10 1/2"W x 4'-2"H	X
3	TACO BELL LETTERS 12" HIGH, WHITE, FLAT FACED	X

NOT USED N.T.S. E

SIGN SCHEDULE N.T.S. C

NOT USED N.T.S. I

NOT USED N.T.S. G

GENERAL NOTES F

SYMBOL	AREA	MANUFACTURER	COLOR	ALTERNATE MFR.	ALTERNATE COLOR	CONTACT INFORMATION
1	CANOPY RAFTER/ BEAM PAINT	SHERWIN WILLIAMS	SW 7018 'DOVETAIL'			SHERWIN WILLIAMS; BRAD HARRINGTON, 216-228-54988 (PHONE), BRAD.E.HARRINGTON@SHERWIN.COM (EMAIL)
2	CANOPY COLUMN PAINT	SHERWIN WILLIAMS	SW 7018 'DOVETAIL'			
3	PARAPET CAP (TOWER)	SHERWIN WILLIAMS	SW 7018 'DOVETAIL'			DURO-LAST; LEE COBB, 800-434-3876 (PHONE)
4	PARAPET CAP (FRONT)	SHERWIN WILLIAMS	SW 7018 'DOVETAIL'			
5	PARAPET CAP (SIDES)	SHERWIN WILLIAMS	SW 7018 'DOVETAIL'			
6	PARAPET CAP (COOLER)	SHERWIN WILLIAMS	SW 7018 'DOVETAIL'			
7	STOREFRONT WINDOWS	TBD	CLEAR ANODIZED			
8	PIPE BOLLARDS	STREET SMART	YELLOW - 1/4" THICK PLASTIC COVER (US.POSTMAN.COM) OR EQUAL			
9	PARAPET BACK ROOFING	DUROLAST	THE COLOR SHALL BE FACTORY COLORED "TAN." EQUAL ALTERNATE ALLOWED.			DURO-LAST; LEE COBB, 800-434-3876 (PHONE)
10	PATIO ROOF	BERRIDGE	ZEE LOCK STANDING SEAM. COLOR 'ZINC COTE' (FACTORY FINISH)			
11	VALANCE COLOR	VENDOR	SW 7018 'DOVETAIL'			
12	MAIN BUILDING COLOR	SHERWIN WILLIAMS	SW 7018 'DOVETAIL'			SHERWIN WILLIAMS; BRAD HARRINGTON, 216-341-5558 X115 (PHONE), BRAD.E.HARRINGTON@SHERWIN.COM
13	ACCENT COLOR	SHERWIN WILLIAMS	SW 6098 'PACER WHITE'			E.I.F.S. CONTACT: STO CORP.; CHUCK DUFFIN, 940-894-2092 (PHONE), 940-894-2095 (FAX), CDUFFIN@STOCORP.COM
14	METAL PANELS	WESTERN STATES METAL ROOFING	18" A606-4 RUSTWALL PANELS			
15	SLAT WALL	VENDOR	WOOD GRAIN EMBOSSED COLOR BY VENDOR			
16	WALL COLOR BEHIND SCREEN WALL	SHERWIN WILLIAMS	SW 6098 'PACER WHITE'			

EXTERIOR FINISH SCHEDULE H

- 1 BUILDING SIGN, BY VENDOR. REQUIRES ELECTRICAL, SEE ELECTRICAL PLANS.
- 2 DRIVE THRU WINDOW. SEE SHEET A1.0 AND A1.1.
- 3 DASHED LINE INDICATES ROOF BEYOND.
- 4 STOREFRONT, TYPICAL.
- 5 TUBE STEEL POST. SEE STRUCTURAL DWGS.
- 6 SWITCH GEAR. PAINT TO MATCH WALL.
- 7 CORRUGATED METAL ROOF.
- 8 GOOSENECK LAMP. (BOTTOM OF LAMP AT 9'-6").
- 9 ASSUME D/T LANE SURFACE IS 6" BELOW THE FINISH FLOOR. REFER TO GRADING & SITE PLAN.
- 10 DASHED BOX INDICATES AREA OF PAINTED 13' X 20' WALL MURAL.
- 11 TOWER WITH METAL PANEL FINISH.
- 12 PARAPET COPING. IF DURO-LAST EDGE TRIM IS USED. USE THE DURO-LAST PRE-FINISHED EDGE TRIM. SEE DETAIL 2/A6.0.
- 13 CO2 FILLER VALVE & COVER. SEE DETAIL 5/A6.2 SIM.
- 14 BENCH
- 15 GAS SERVICE.
- 16 WALL SHALL BE FINISHED PRIOR TO INSTALLATION OF SWITCHGEAR.

- 17 SCUPPER, COLLECTOR, AND VERTICAL DOWNSPOUT 6" MIN. PAINT TO MATCH ADJACENT WALL.
- 18 CONCRETE CURB.
- 19 RTU BEYOND. PAINT TO MATCH MAIN BUILDING COLOR.
- 20 BREAK METAL COVER OVER WOOD STUDS TO MATCH STOREFRONT. SEE 3/A6.1
- 21 OVERFLOW SCUPPER
- 22 WOOD RAFTERS. SEE STRUCTURAL DWGS.
- 23 BOLLARD
- 24 DUROLAST SINGLE MEMBRANE ROOFING OR EQUAL.
- 25 IF THE DURO LAST PARAPET CAP TRIM IS USED IT SHALL NOT BE PAINTED.
- 26 WOOD HEADER BEAM. SEE STRUCTURAL DWGS.
- 27 PATIO WALL. SEE DETAIL 20/A6.2
- 28 CONTINUOUS LIGHT FIXTURE RUNNER ON PATIO WALL, BY OTHERS.
- 29 STOREFRONT DOOR. REFER TO DOOR SCHEDULE.
- 30 HOSE BIBB LOCATION. REFER TO PLUMBING AND DETAIL 8/A6.2
- 31 GUTTER AND DOWNSPOUT. PAINT TO MATCH COLUMN
- 32 METAL AWNING - BY OTHERS
- 33 4" Ø BOLLARDS AT ALL DOWNSPOUTS.
- 34 E.I.F.S. (TYP). SEE 2 & 4/A6.2.
- 35 LED STRING LIGHT FIXTURE. REFER TO ELEC.

KEY NOTES D

12134.230

△ DRB 1ST SUB 09.08.16
△
△
△
△
△
△
△
△
△
△
△
△
△
△

CONTRACT DATE: --
 BUILDING TYPE: EXP. LITE MED40
 PLAN VERSION: A
 SITE NUMBER: --
 STORE NUMBER: --

TACO BELL
 UNSER BLVD NW & McMAHON BLVD. NW
 ALBUQUERQUE, NM 87114



EXTERIOR ELEVATIONS
A4.0