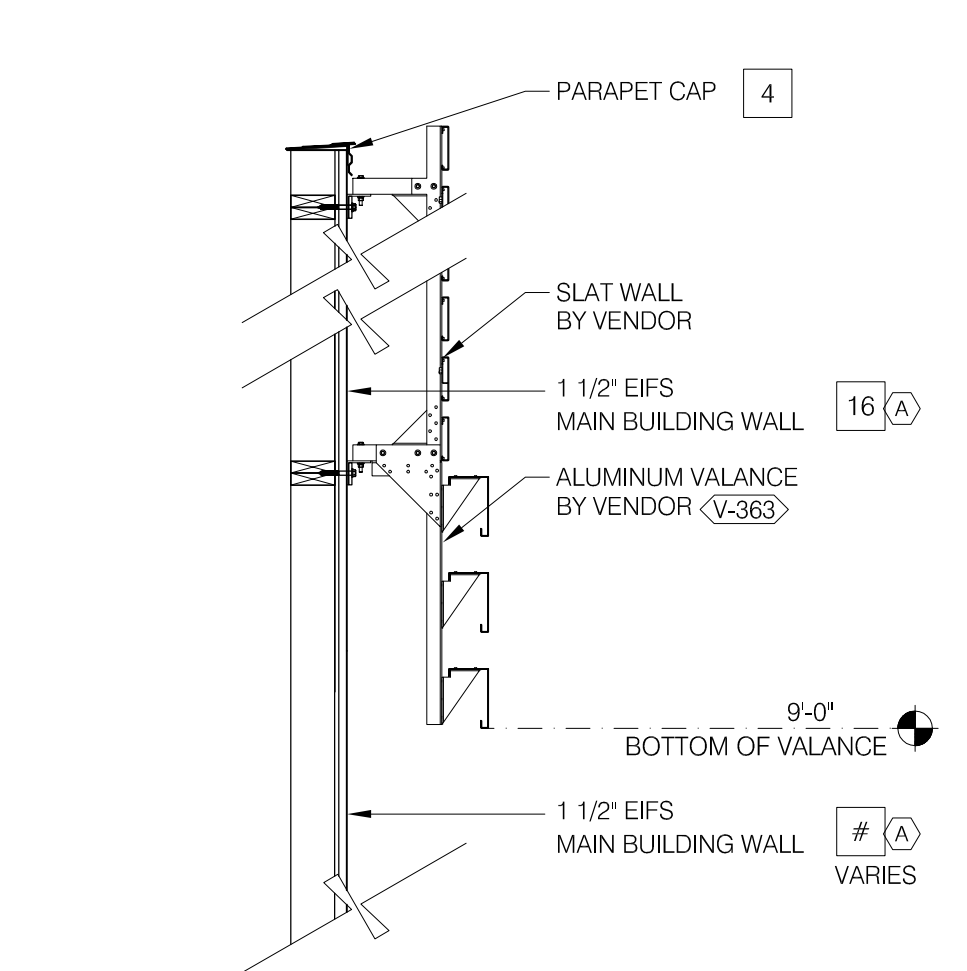
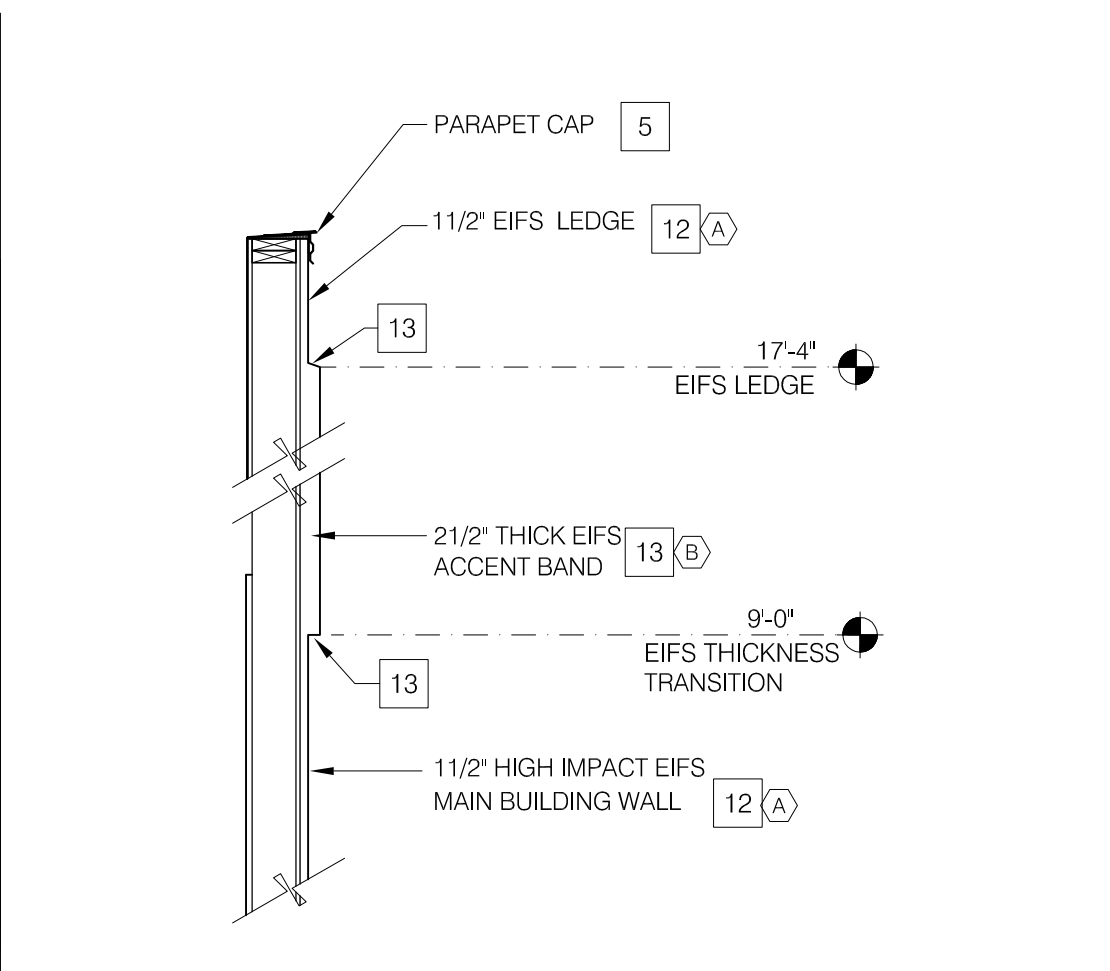


RIGHT SIDE ELEVATION 1/4"=1'-0" **A**



SLAT WALL COLOR TRANSITION N.T.S. **I**



EIFS THICKNESS COLOR TRANSITION N.T.S. **G**

MISCELLANEOUS

A. SEE SHT A1.1 "WINDOW TYPES" FOR WINDOW ELEVATIONS.
 B. EIFS. TEXTURE SHALL BE "FINE".

SEALERS (REFER TO SPECS):
 A. SEALANT AT ALL WALL AND ROOF PENETRATIONS.
 B. SEALANT AT ALL WINDOW AND DOOR FRAMES AT HEAD AND JAMB. DO NOT SEAL SILL @ WINDOWS.
 C. APPLY NEOPRENE GASKET (CONT.) BETWEEN BUILDING & CANOPY.

"CRITICAL" DIMENSIONS:
 A. REQUIRED CLEAR OPENING WIDTH TO ENSURE COORDINATION WITH STANDARD SIGNAGE/BUILDING ELEMENTS DIMENSIONS.

NOTE: NO EXTERIOR SIGNS ARE WITHIN THE SCOPE OF WORK COVERED BY THE BUILDING PERMIT APPLICATION. THE GENERAL CONTRACTOR SHALL BE RESPONSIBLE FOR COORDINATING THE INSTALLATION OF ALL EXTERIOR SIGNS AND INSTALLATION OF REQUIRED BLOCKING AND ELECTRICAL CONNECTIONS FOR FINAL APPROVED SIGNS.

DENOTES 2-1/2" THICK EIFS.

GENERAL NOTES **F**

Taco Bell
 Unser Blvd. NW & McMahon Blvd. NW
Signage Size Calculations

Sht #	Façade Mark	Façade Area (S.F.)	Signage Description	Signage Dimensions	Signage Area (S.F.)	% of Façade	Comments
A4.0	A	1493.7	Letters	1'-0" x 12'-2"	12.17	0.81%	
		1493.7	Mural	13'-0" x 6'-0"	0	0.00%	Mural is eliminated
A4.1	A	1504.4	Bell & Letters	7'-5" x 6'-2" *	45.74	3.04%	
		1504.4	Bell & Letters	(4.56'x4.88')+(12.17'x1') **	34.42	2.29%	
A4.1	B	520.3	No Sign		0	0.00%	
A4.1	C	675.5	Bell & Letters	7'-5" x 6'-2" *	45.74	6.77%	This sign can be reduced to 6'-11" x 5'-9" (39.77 s.f.) or less to achieve compliance with the 6% limit
		675.5	Bell & Letters	(4.56'x4.88')+(12.17'x1') **	34.42	5.10%	

* Calculation Method A: Area found by placing a single box around combined Bell & Words.
 ** Calculation Method B: Area found by placing individual boxes around Bell separately & Words separately.

NOT USED N.T.S. **B**

NOTE: SIGNAGE UNDER SEPARATE PERMIT

V-XXX	QTY	ITEM DESCRIPTION	ELEC
V-322	2	TACO BELL 'BELL' SIGN 4'-10 1/2"W x 4'-2"H	X
V-349	3	TACO BELL LETTERS 12" HIGH, WHITE, FLAT FACED	X

NOT USED N.T.S. **E**

NOT USED N.T.S. **C**

SYMBOL	AREA	MANUFACTURER	COLOR	ALTERNATE MFR.	ALTERNATE COLOR	CONTACT INFORMATION
1	CANOPY RAFTER/ BEAM PAINT	SHERWIN WILLIAMS	SW3022 'WOODSCAPES BLACK ALDER'			SHERWIN WILLIAMS: BRAD HARRINGTON, 216-228-54988 (PHONE), BRAD.E.HARRINGTON@SHERWIN.COM (EMAIL)
2	CANOPY COLUMN PAINT	SHERWIN WILLIAMS	SW 7062 ROCK BOTTOM			
3	PARAPET CAP (TOWER)	DUROLAST (25)	MEDIUM BRONZE (FACTORY FINISH)	SHERWIN WILLIAMS	SW 7069 'IRON ORE'	DURO-LAST: LEE COBB, 800-434-3876 (PHONE)
4	PARAPET CAP (FRONT)	DURALAST	SHERWIN WILLIAMS SW6832 'IMPULSE PURPLE: EGG SHELL (P-4)			
5	PARAPET CAP (SIDES)	DUROLAST (25)	REGAL WHITE (FACTORY FINISH)			
6	PARAPET CAP (COOLER)	DUROLAST (25)	GALVALUME PLUS (FACTORY FINISH)			
7	STOREFRONT WINDOWS	TBD	DARK BRONZE			
8	PIPE BOLLARDS	STREET SMART	YELLOW - 1/4" THICK PLASTIC COVER (US.POSTMAN.COM) OR EQUAL			
9	PARAPET BACK ROOFING	DUROLAST	THE COLOR SHALL BE FACTORY COLORED 'TAN.' EQUAL ALTERNATE ALLOWED.			DURO-LAST: LEE COBB, 800-434-3876 (PHONE)
10	PATIO ROOF	BERRIDGE	S-DECK PREWEATHERED GALVALUME			
11	SLAT WALL AND VALANCE COLOR	VENDOR	SW 7034 'STATUS BRONZE' (EQUAL)			
12	MAIN BUILDING COLOR	SHERWIN WILLIAMS	SW 7067 'CITYSCAPE'			SHERWIN WILLIAMS: BRAD HARRINGTON, 216-341-5558 X115 (PHONE), BRAD.E.HARRINGTON@SHERWIN.COM
13	ACCENT COLOR	SHERWIN WILLIAMS	SW 6098 'PACER WHITE'			EIFS CONTACT: STO CORP.; CHUCK DUFFIN, 940-894-2092 (PHONE), 940-894-2095 (FAX), CDUFFIN@STOCORP.COM
14	METAL PANELS	WESTERN STATES METAL ROOFING	18" A606-4 RUSTWALL PANELS			
15	WALL MURAL	THIS STUFF WORKS	TSW8 ACRYLI-MASTER GRAFFITI RESISTANT COATING			
16	WALL COLOR BEHIND SCREEN WALL	SHERWIN WILLIAMS	SW 6831 'CLEMATIS'			

EXTERIOR FINISH SCHEDULE **H**

KEY NOTES **D**



MARK D. MCCLURGAGE AIA, CCS
 1525 E. Douglas Wichita, KS 67211
 Tel: (316) 265-9347
 Fax: (316) 265-5646
 www.gdmv.com

12134.230

△
△
△
△
△
△
△
△
△
△
△
△
△
△
△

CONTRACT DATE: --
 BUILDING TYPE: EXP. LITE MED40
 PLAN VERSION: SEPTEMBER 2015
 SITE NUMBER: --
 STORE NUMBER: --

TACO BELL
 UNSER BLVD NW & McMAHON BLVD. NW
 ALBUQUERQUE, NM 87114



EXTERIOR ELEVATIONS
A4.0