

VICINITY MAP

**GENERAL NOTES**

- Bearings are grid, based upon the New Mexico State Plane Coordinate System, Central Zone (NAD 83).
- Distances are ground.
- Record Plat or deed bearings and distances, where they differ from those indicated by this field survey, are shown in parenthesis ( ).
- All corners that were set on a 5/8" cedar with cap stamped "4000 L.S. 9750" unless otherwise indicated hereon.
- All street centerline monumentation shall be installed at all corners. All street centerline monumentation shall be set on a standard four (4") aluminum monument stamped "City of Albuquerque Centerline Monument - Do not disturb, PS Number 9750" and will be set flush with the final asphalt lift.
- Manholes will be offset at all points of curvature, points of tangency, street intersections, and all other angle points to allow use of centerline monumentation.
- City Zone Atlas Page H-13

CURVE	LENGTH	RADIUS	TANGENT CHORD	CHORD BEARING	DELTA
C1	78.00	78.00	41.70'	76.97°	202.44°
C2	28.89'	30.00'	15.66'	27.79°	43.1613°
C3	28.89'	30.00'	15.66'	27.79°	53.1102°
C4	7.50'	30.00'	3.77'	578.34.91°E	14.19.56°
C5	56.63'	123.00'	28.83'	56.13°	267.248°
C6	16.81'	23.00'	8.18'	57.25.92°E	36.13.91°
C7	16.81'	23.00'	8.18'	58.22.40°W	62.23.00°
C8	13.45'	27.00'	6.59'	13.14°	94.710°
C9	30.46'	25.00'	17.51'	28.69°	70.0142°
C10	96.46'	45.00'	82.56'	79.02°	122.48.56°
C11	36.08'	30.00'	20.58'	33.95°	65.54.41°
C12	36.08'	30.00'	20.58'	11.39°	41.34.22°
C13	21.27'	30.00'	11.39°	12.29°	57.328.00°W

**AMENDED PRELIMINARY PLAT OF**

**HACIENDAS DON VILLEGAS**  
(BEING A REPLAT OF TRACT A, CONTRERAS ADDITION)

WITHIN

**SECTION 7, TOWNSHIP 10 NORTH, RANGE 3 EAST**  
**NEW MEXICO PRINCIPAL MERIDIAN**  
**CITY OF ALBUQUERQUE**  
**BENNALILLO COUNTY, NEW MEXICO**

MAY, 2015

**LEGAL DESCRIPTION**

Tract A, Contreras Addition as the same is shown and designated on the plat thereof filed in the office of the County Clerk of Bernalillo County, New Mexico on May 11, 2015 in Plat Book 2015C, Page 110.

Said parcel contains 1.1951 acres, more or less.

**SUBMISSION DATA**

- Total number of existing Tracts: 1
- Total number of Lots created: 6
- Total mileage of full width streets created: 0.045mile.
- Gross Subdivision acreage: 1.1951 acres.

**PURPOSE OF PLAT**

- The Purpose of this plat is to:
- Create the 6 new residential lots as shown hereon.
  - Dedicate the Public street right of way as shown hereon to the City of Albuquerque in fee simple with warranty covenants.
  - Grant the Private Easement, Water and Public Sanitary Sewer, Water and Driveway Easements as shown hereon.
  - Grant the Public Utility Easements as shown hereon.

**APPROVALS**

OWNER(S)  
Haciendas De Villegas, LLC

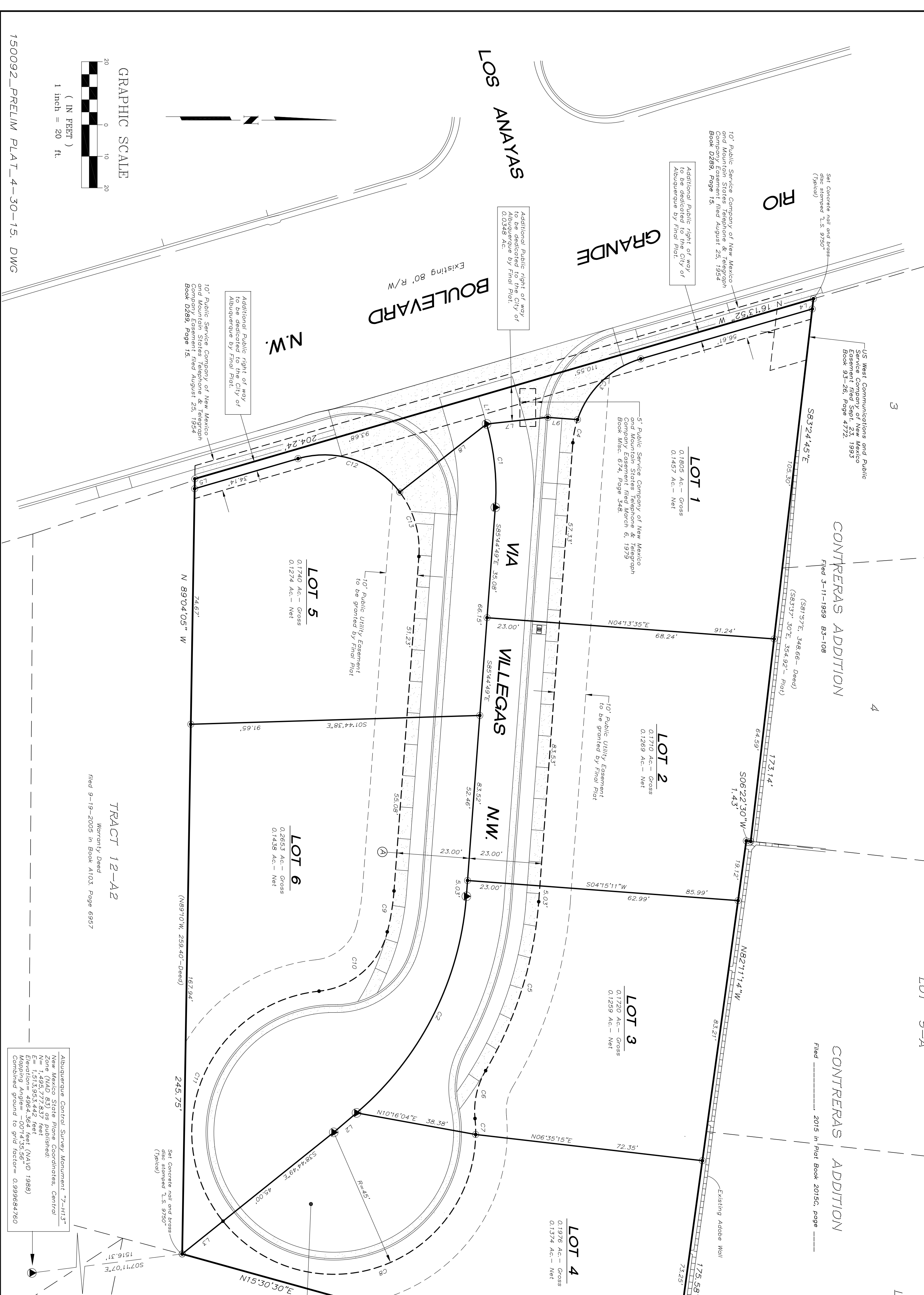
Julie W. Gutierrez, Managing Member

Approved

CITY SUPERVISOR \_\_\_\_\_ Date \_\_\_\_\_

LINE	LENGTH	BEARING
L1	9.16	N73.50.31°E
L2	9.51	S40.28.30°E
L3	16.59	S38.44.48°E
L4	14.42	S89.02.03°E
L5	3.14	S89.02.03°E
L6	9.43	S04.51.11°W
L7	19.53	S06.09.43°E
L8	34.99	S38.07.40°E

**NOTE ④**  
Private Roadway Easement granted from the 6th and 6th Subdivisions to the owners of the portion contained within their respective lots. A Public Sanitary Sewer, Water and Driveway Easement is granted to the ABCWU and the City of Albuquerque by this plat within the grossed Private Roadway Easement.



150092\_PRELIM\_PLAT\_4-30-15.DWG