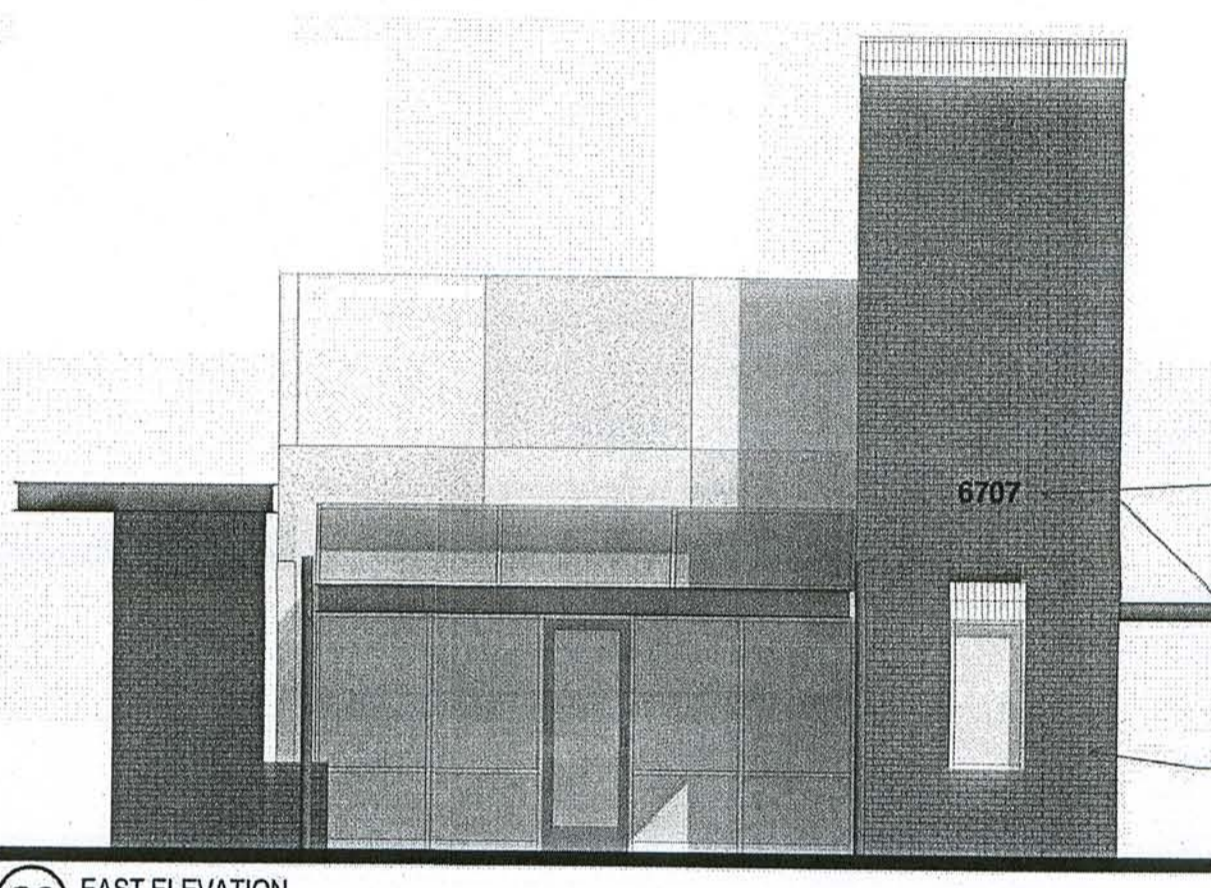


- KEYED NOTE:**
- (A) P.I.V
 - (B) EXISTING FIRE HYDRANT
 - (C) ENTRANCE
 - (D) EXIT
 - (E) FDC
 - (F) NEW FIRE HYDRANT
 - (G) CONNECT TO EXISTING 6" FIRELINE

STARBUCK'S
6707 JEFFERSON ST, NE
87109
BUILDING AREA (LOT 1): 2,000 SF
CONSTRUCTION TYPE: VB
NO SPRINKLER SYSTEM
SINGLE-STORY BUILDING
MAX HEIGHT 28'-0"

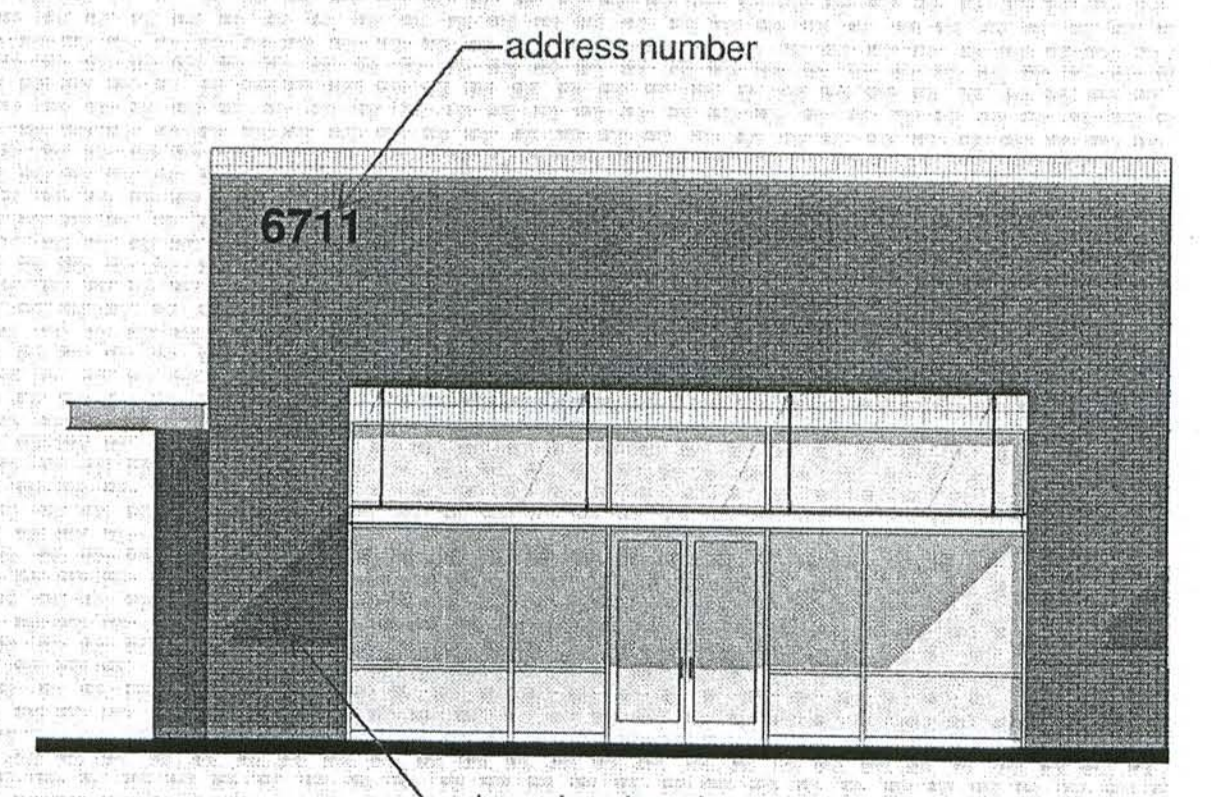
277-14
HYDRANT AND FIRE ACCESS
ALBUQUERQUE FIRE MARSHAL'S OFFICE
PLANS CHECKING DIVISION
SOFT 2002 CONSTRUCTION TYPE VB
GPM 1500 NUMBER OF HYDRANTS 1
APPROVED / DISAPPROVED
DATE 7-20-18
SIGNATURE / MAIN NUMBER / DATE



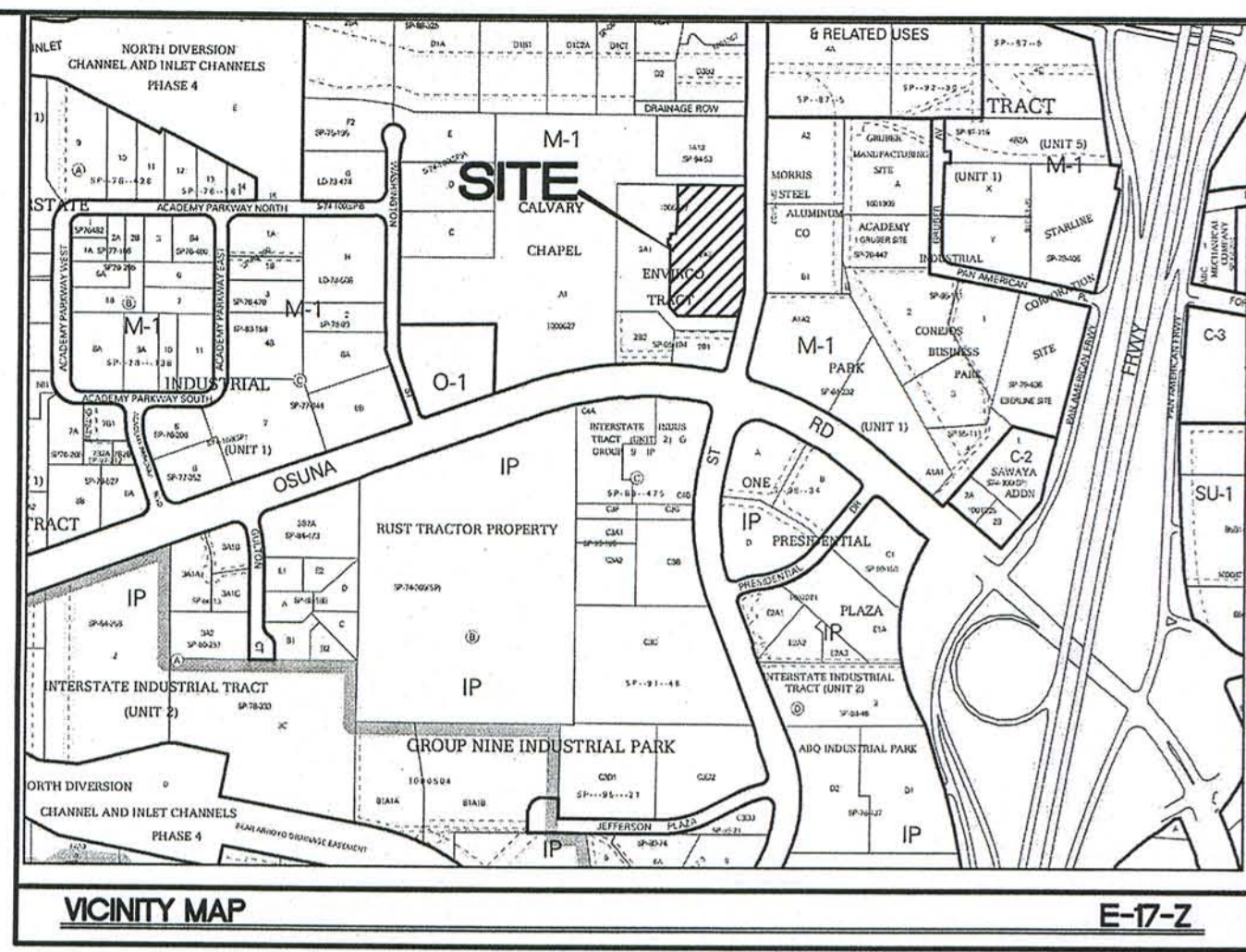
C3 EAST ELEVATION
1/8" = 1'-0"

SHOPS
6711 JEFFERSON ST, NE
87109
BUILDING AREA (LOT 2): 10,000 SF
CONSTRUCTION TYPE: IIB
AUTOMATIC SPRINKLER SYSTEM
SINGLE-STORY BUILDING
MAX HEIGHT 28'-0"

277-14
HYDRANT AND FIRE ACCESS
ALBUQUERQUE FIRE MARSHAL'S OFFICE
PLANS CHECKING DIVISION
SOFT 2002 CONSTRUCTION TYPE IIB
GPM 1500 NUMBER OF HYDRANTS 2
APPROVED / DISAPPROVED
DATE 7-20-18
SIGNATURE / MAIN NUMBER / DATE



B1 SOUTH ELEVATION
1/8" = 1'-0"



- LEGEND**
- CURB & GUTTER
 - BOUNDARY LINE
 - BUILDING
 - - - EXISTING CURB & GUTTER
 - - - EXISTING BOUNDARY LINE
 - FIRE ACCESS
 - EXISTING FIRE HYDRANT

- NOTES**
- ON SITE FIRE LANE ROAD SHALL BE MARKED ON BOTH SIDES, AS DIRECTED BY FIRE MARSHALL
 - FIRE APPARATUS ACCESS ROADS SHALL NOT EXCEED 10 PERCENT IN GRADE AND SHALL HAVE AN ASPHALT DRIVING SURFACE CAPABLE OF SUPPORTING THE IMPOSED LOAD OF FIRE APPARATUS WEIGHING AT LEAST 75000 LBS

CAUTION
ALL EXISTING UTILITIES SHOWN WERE OBTAINED FROM RESEARCH, AS-BUILTS, SURVEYS OR INFORMATION PROVIDED BY OTHERS. IT SHALL BE THE SOLE RESPONSIBILITY OF THE CONTRACTOR TO CONDUCT ALL NECESSARY FIELD INVESTIGATIONS PRIOR TO AND INCLUDING ANY EXCAVATION, TO DETERMINE THE ACTUAL LOCATION OF UTILITIES AND OTHER IMPROVEMENTS, PRIOR TO STARTING THE WORK. ANY CHANGES FROM THIS PLAN SHALL BE COORDINATED WITH AND APPROVED BY THE ENGINEER.

	ENGINEER'S SEAL INDEPENDENCE SQUARE ALBUQUERQUE, NM	DRAWN BY DY
	LOT 1 AND LOT 2 FIRE ONE PLAN	DATE 1-16-18
RONALD R. BOHANNAN P.E. #7868	TERRA WEST, LLC 5571 MIDWAY PARK PLACE NE ALBUQUERQUE, NM 87109 (505) 858-3100 www.tierrowestllc.com	2017093-FIRE ONE SHEET # F1 JOB # 2017093