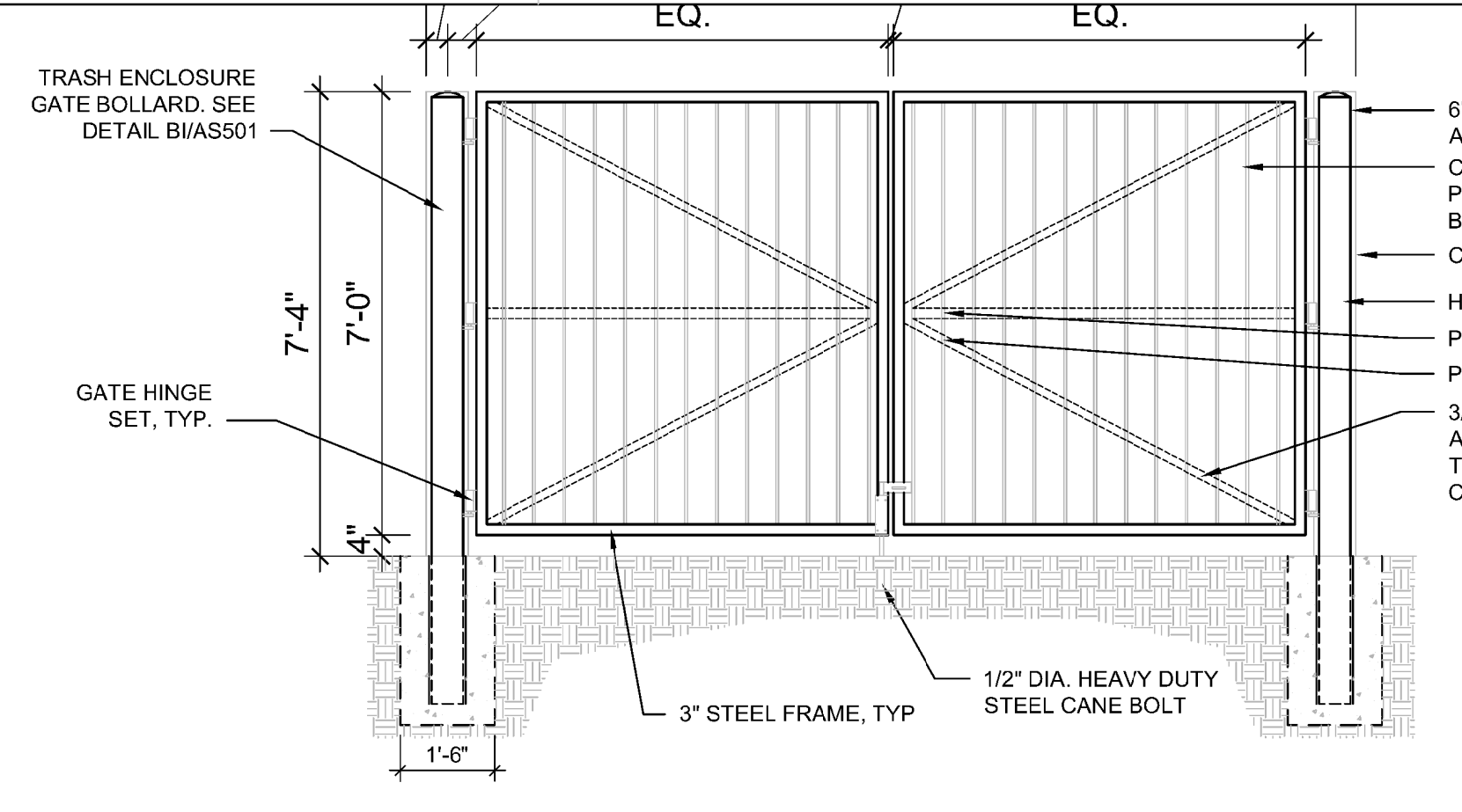
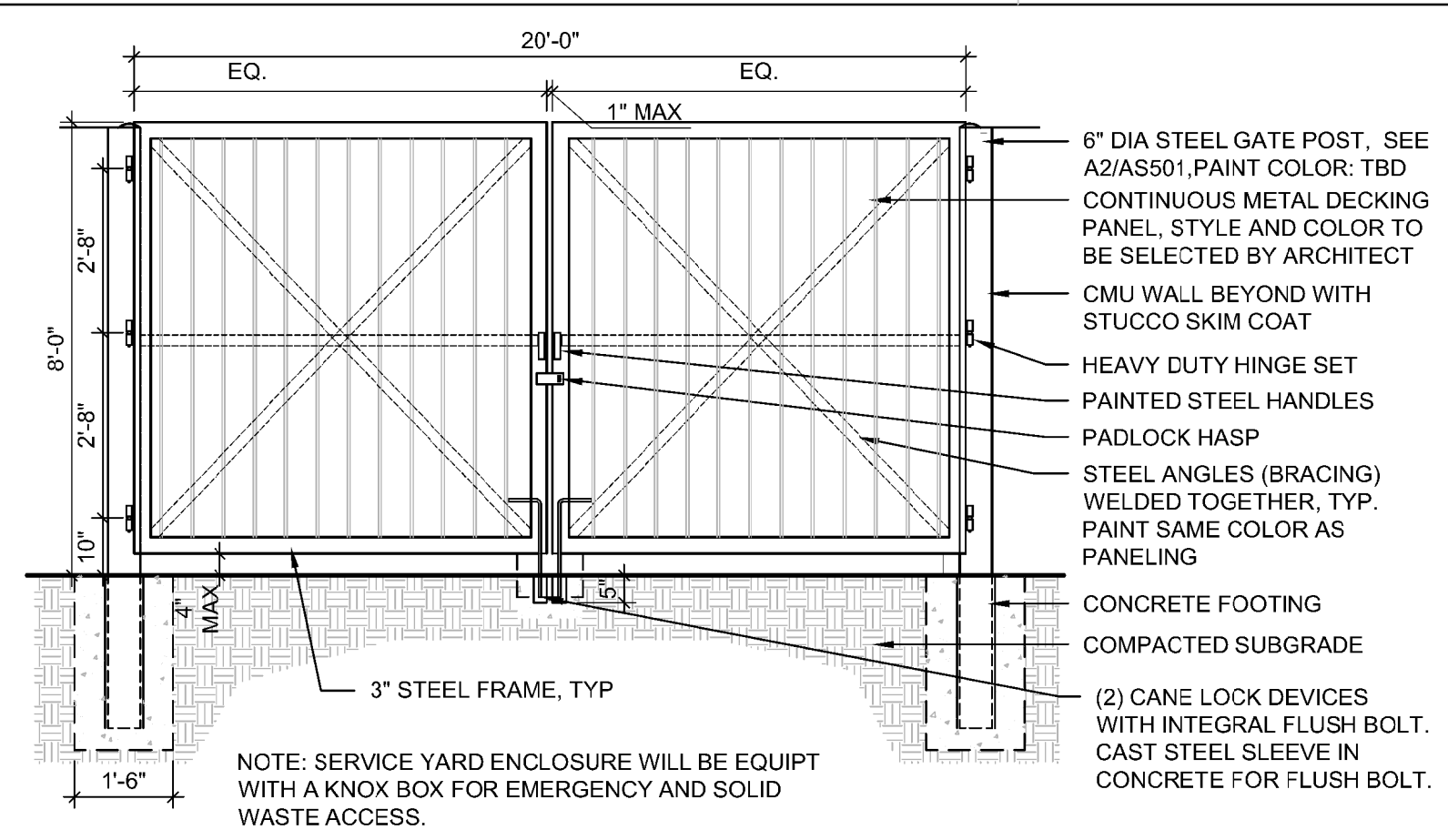


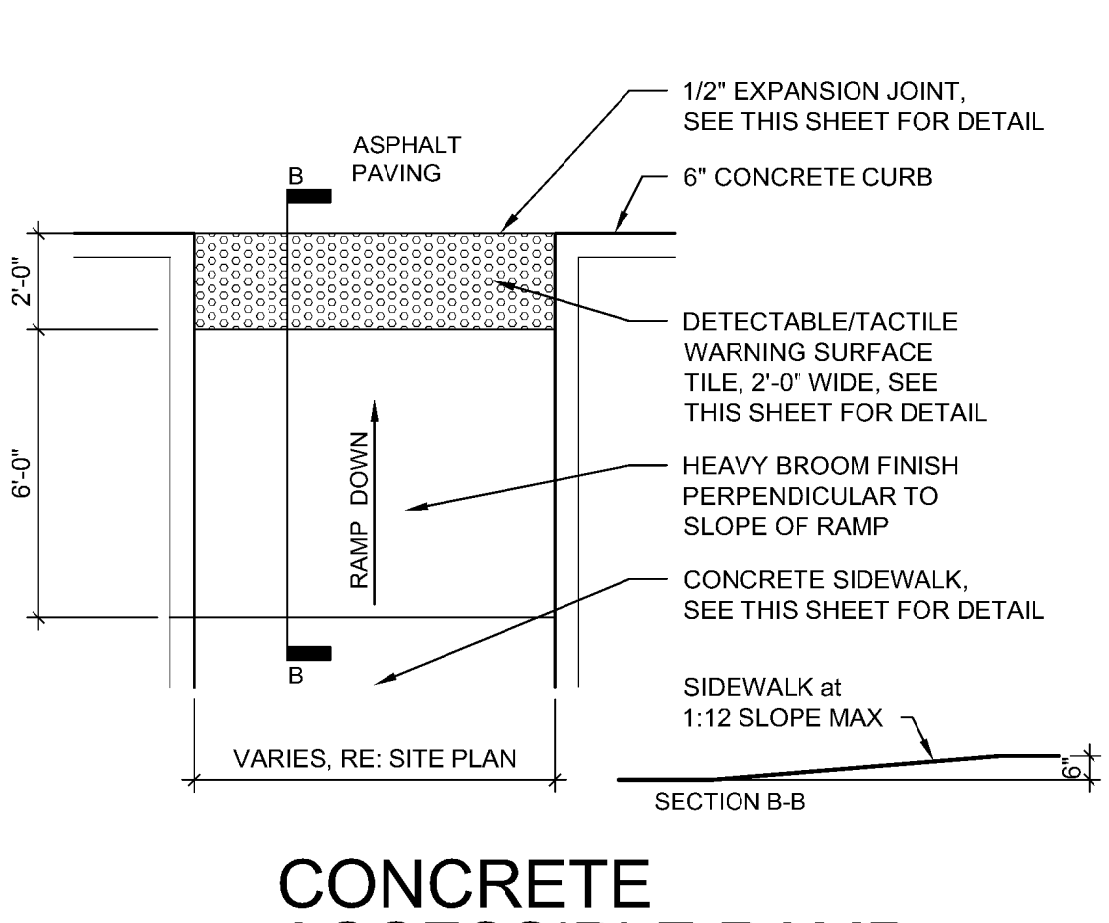
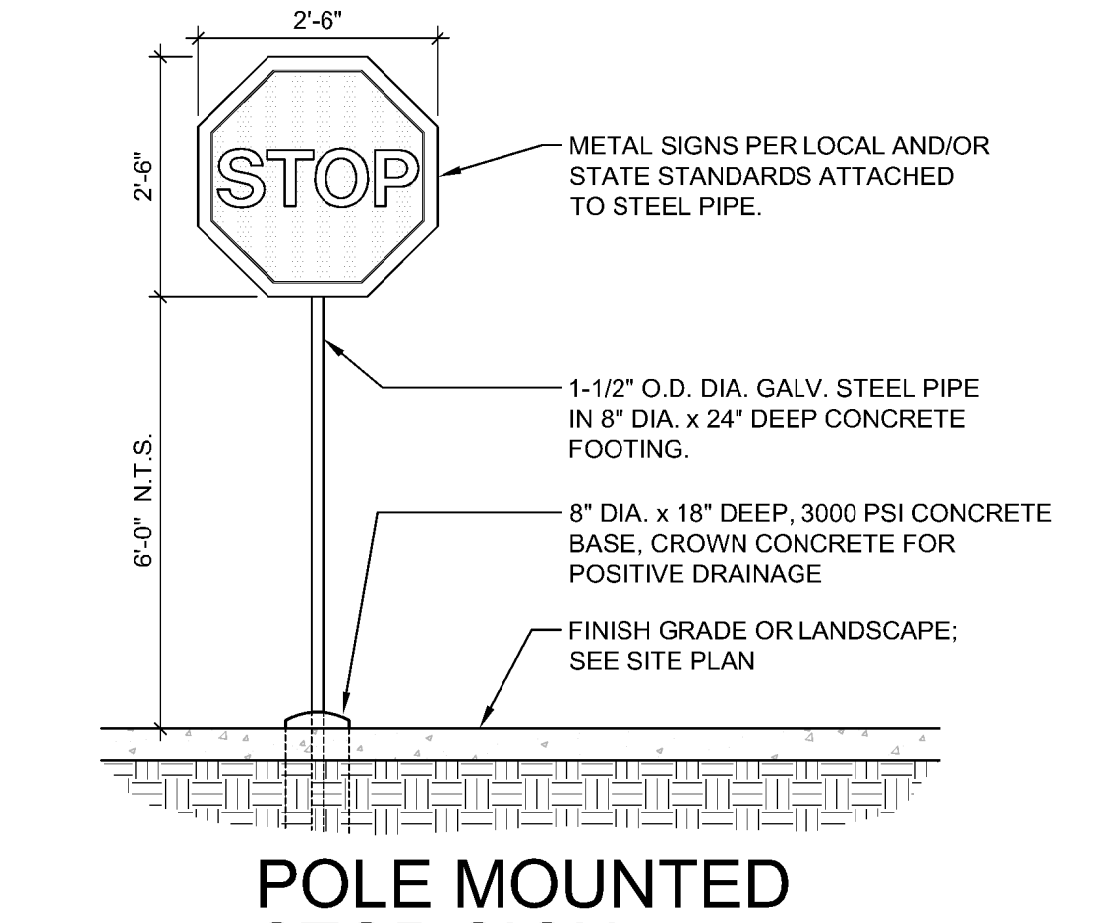
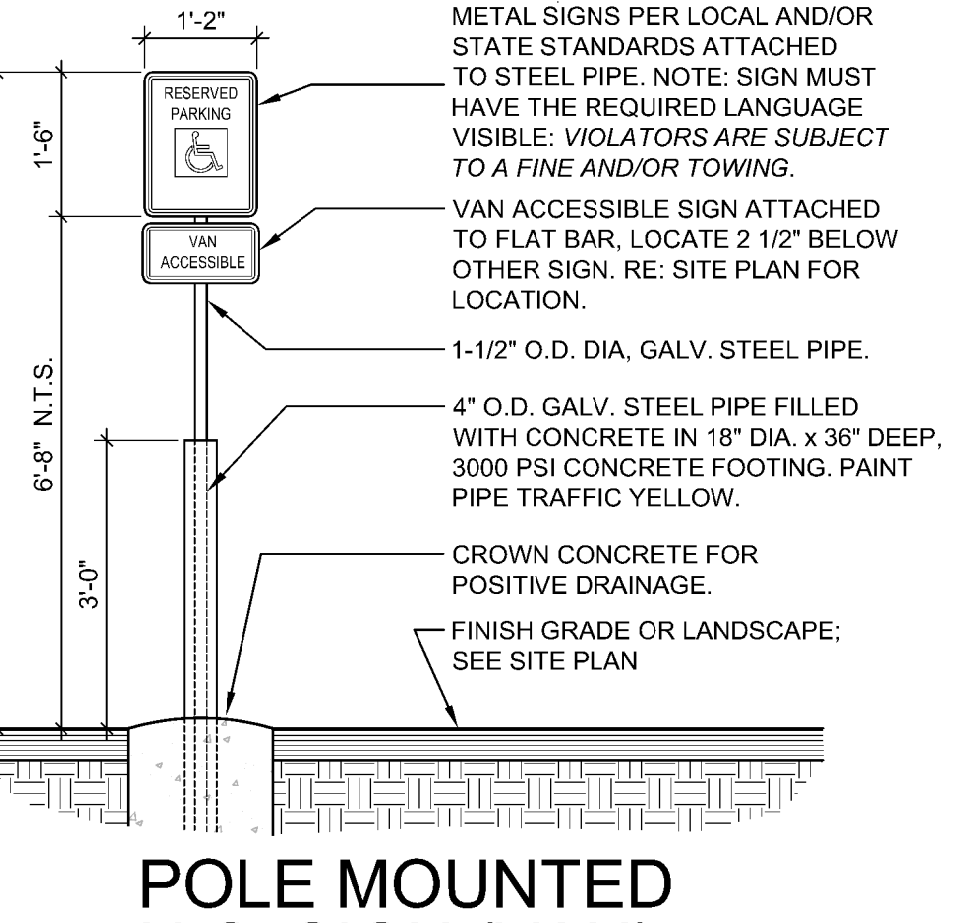
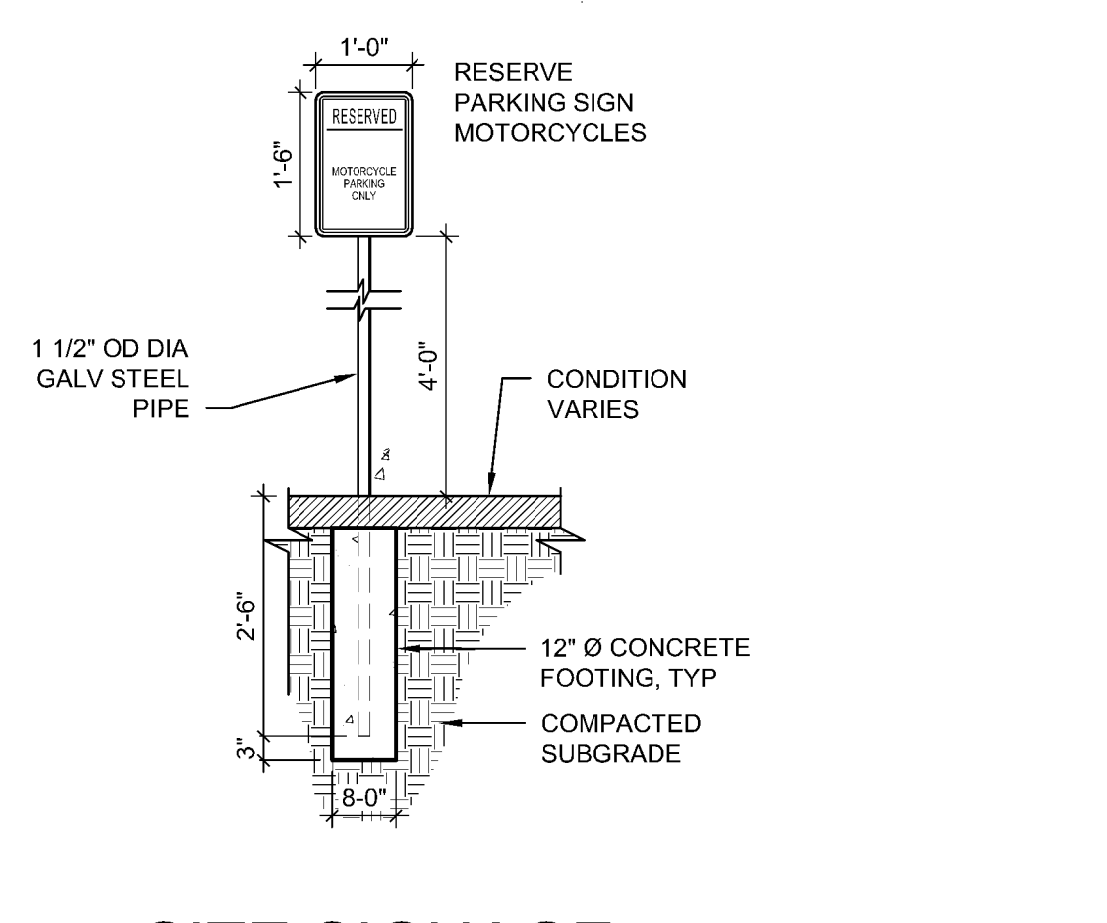
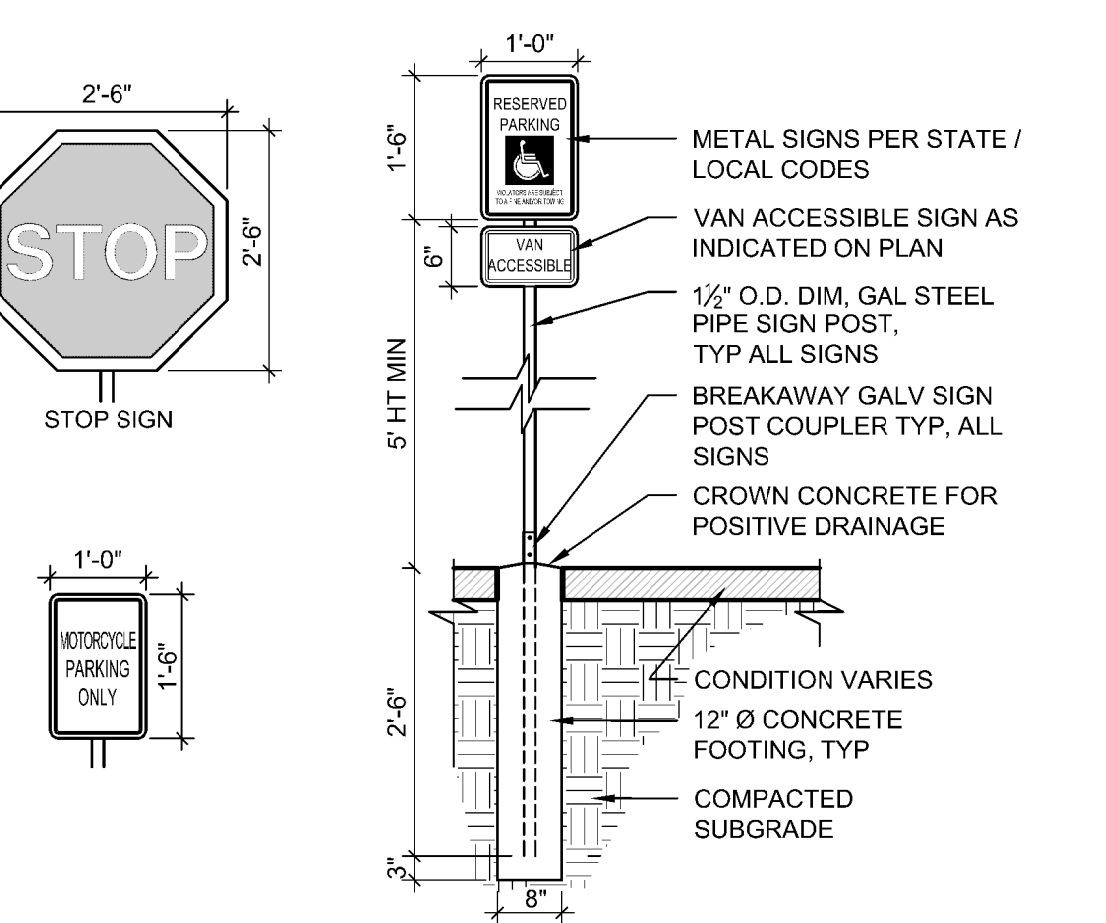
REVISIONS	
▲	
▲	
▲	
▲	

DRAWN BY	DPS
REVIEWED BY	CRG
DATE	01/19/2018
PROJECT NO.	17-0130
DRAWING NAME	SITE DETAILS



**D1 SERVICE YARD ENCLOSURE GATE**  
3/8" = 1'-0"

**D2 TRASH ENCLOSURE**  
3/8" = 1'-0"



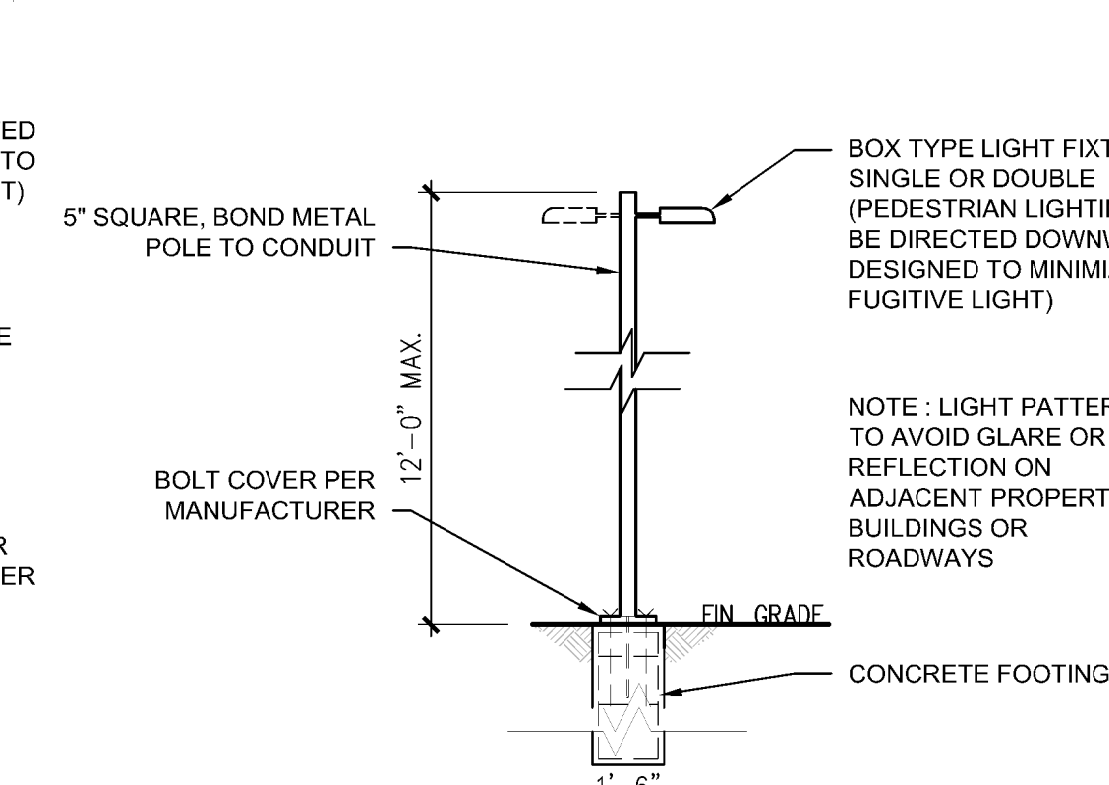
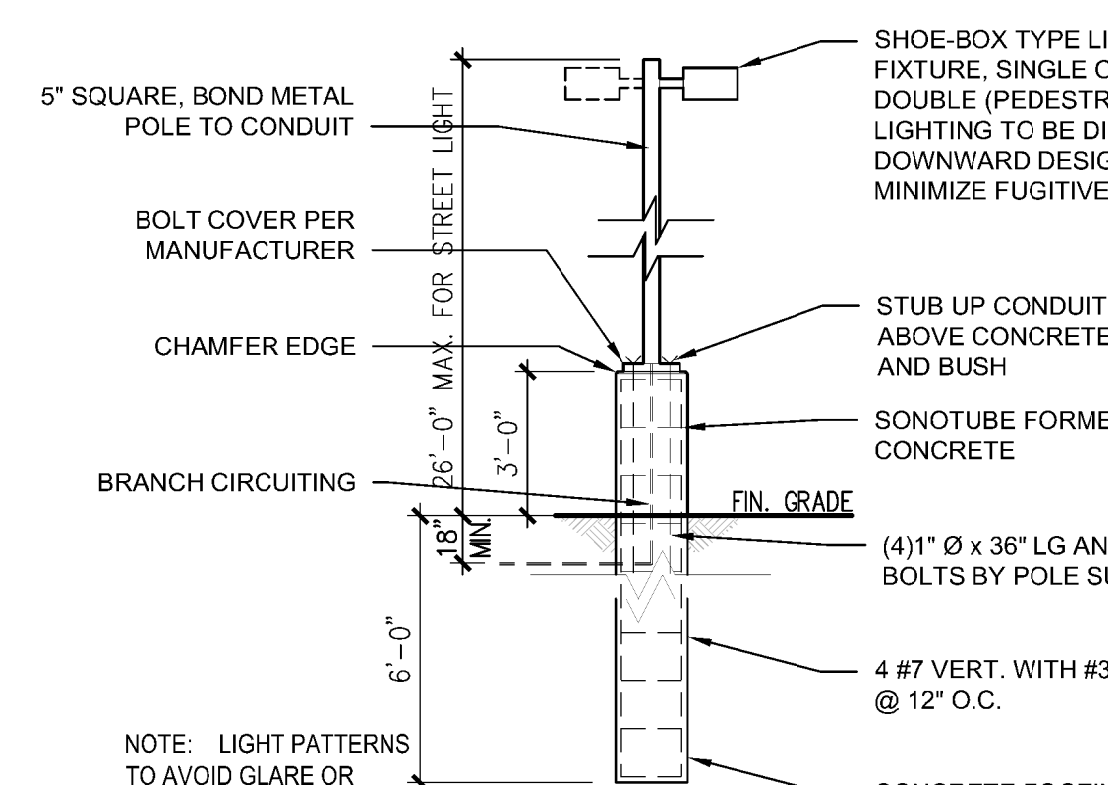
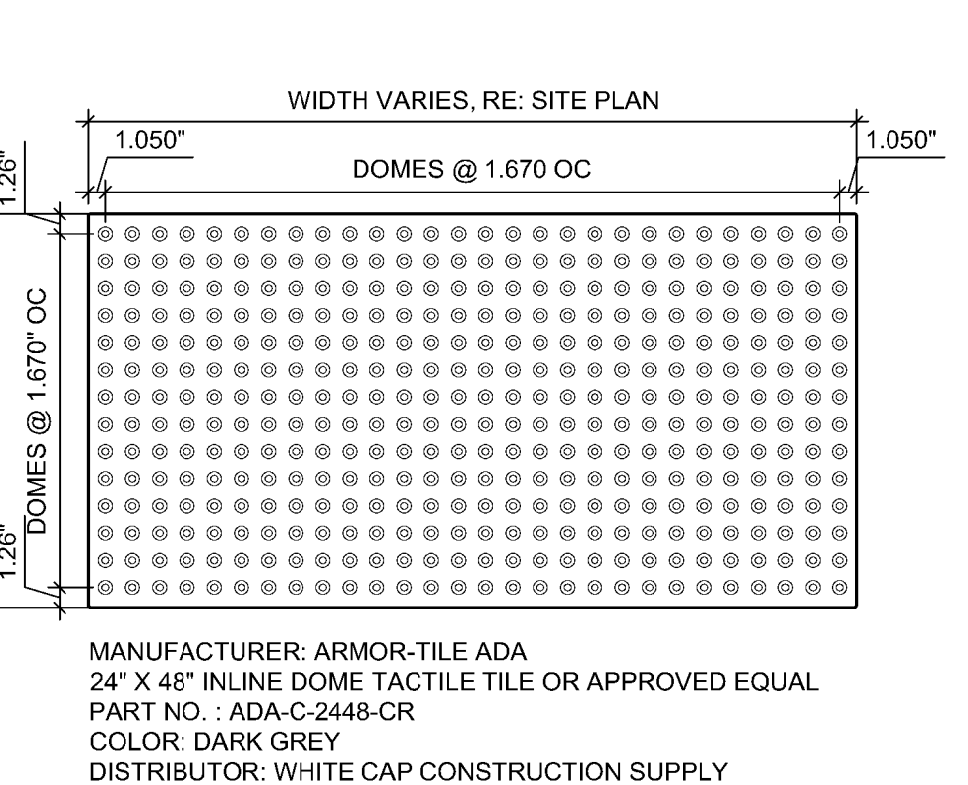
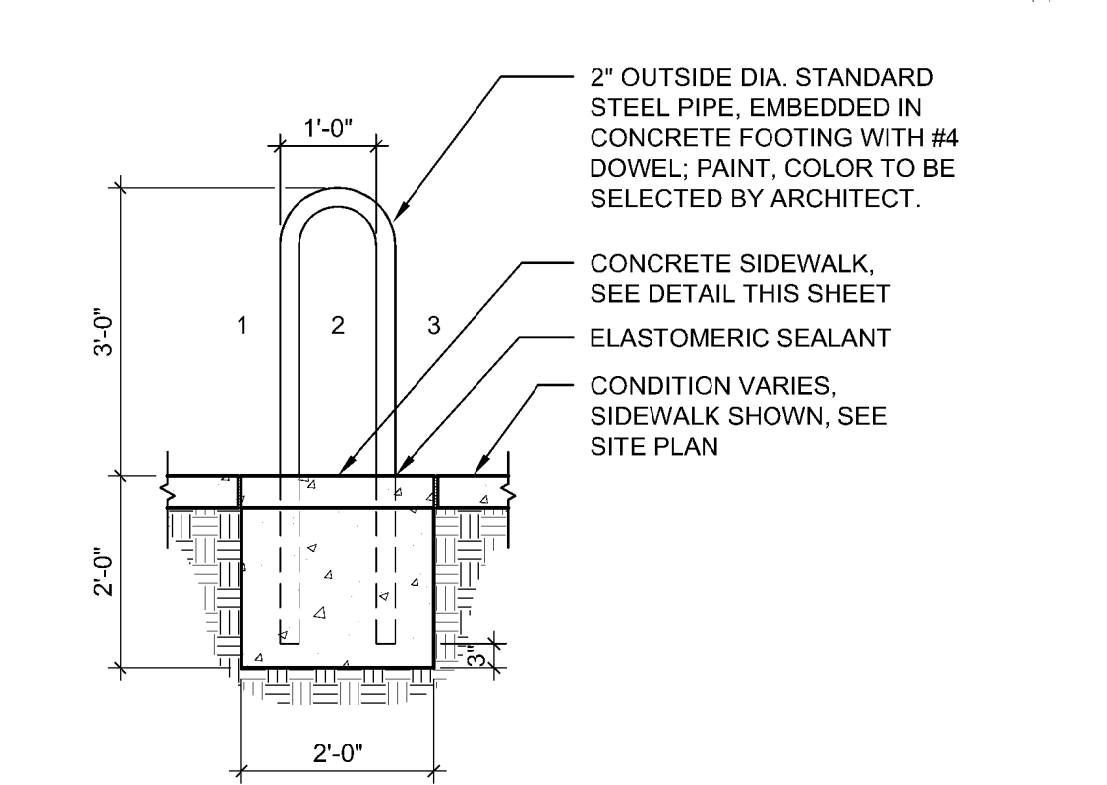
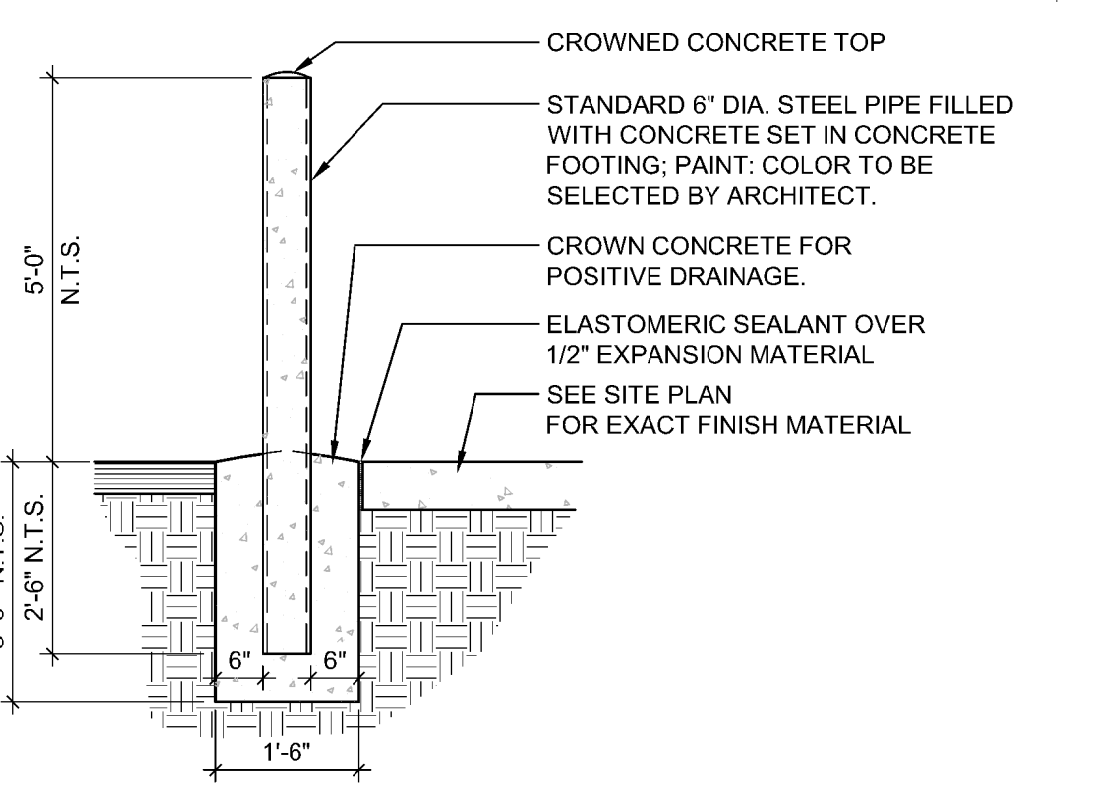
**C1 SIGNAGE**  
1/2" = 1'-0"

**C2 SITE SIGNAGE**  
1/2" = 1'-0"

**C3 POLE MOUNTED H.C. SIGN (VAN)**  
1/2" = 1'-0"

**C4 POLE MOUNTED STOP SIGN**  
1/2" = 1'-0"

**C5 CONCRETE ACCESSIBLE RAMP**  
1/4" = 1'-0"



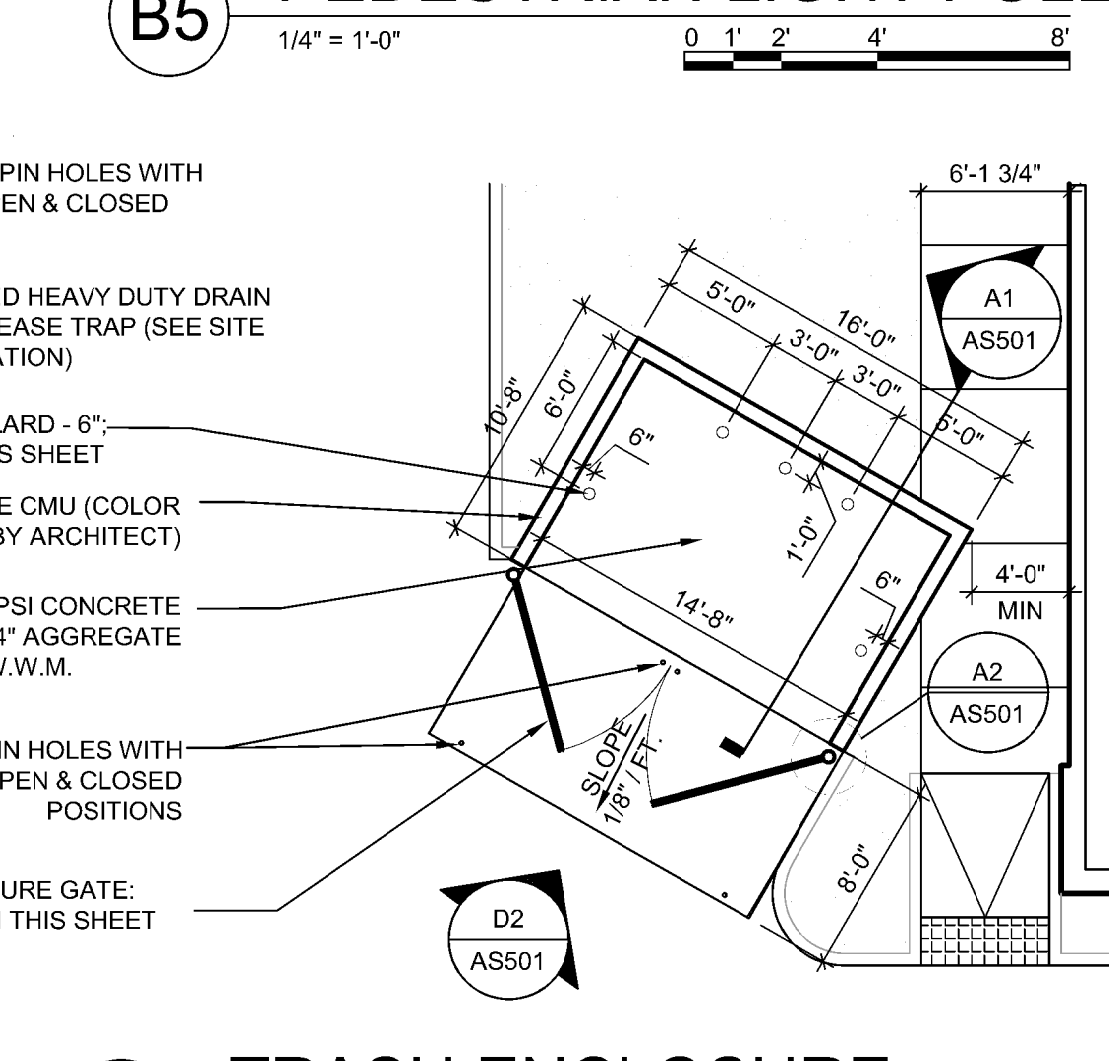
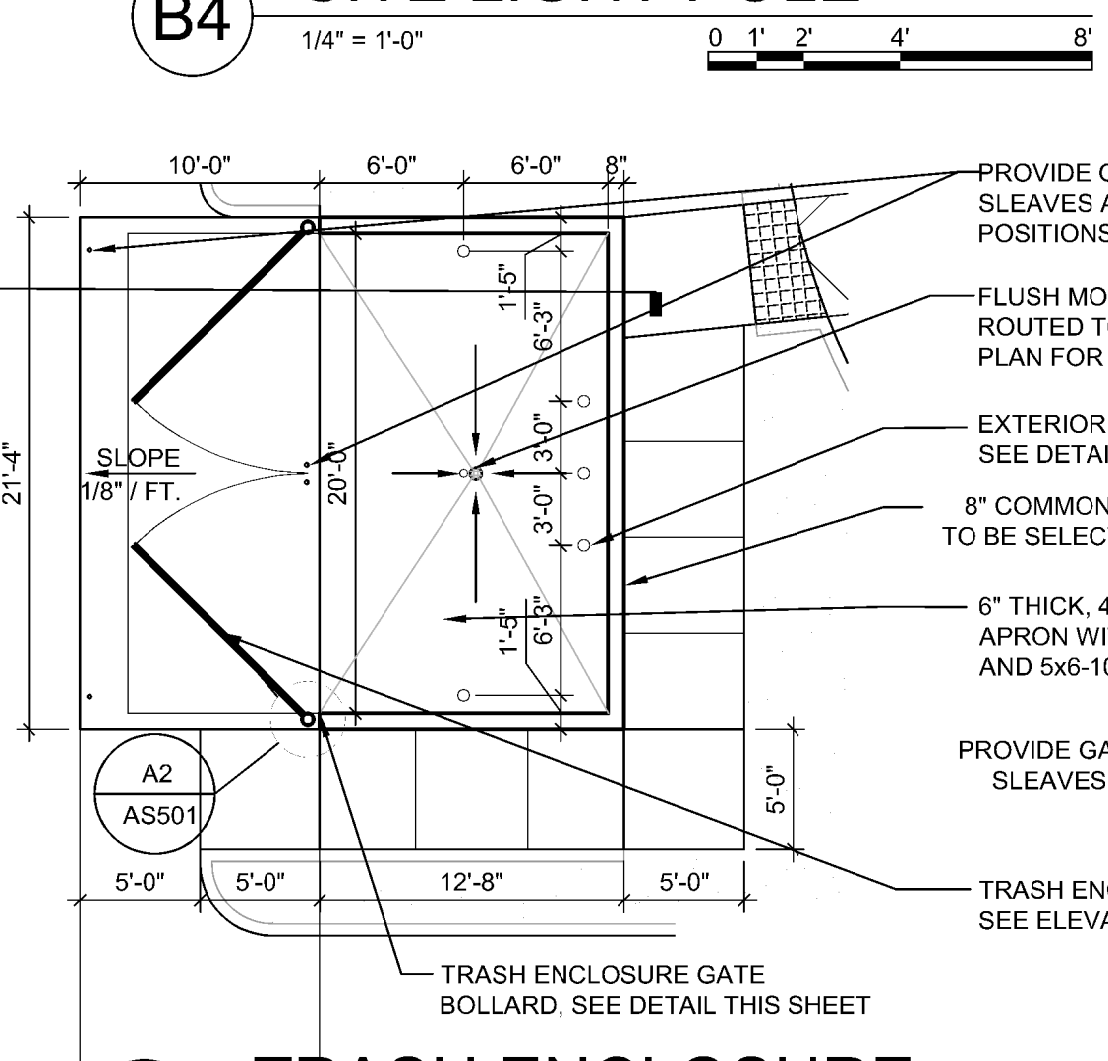
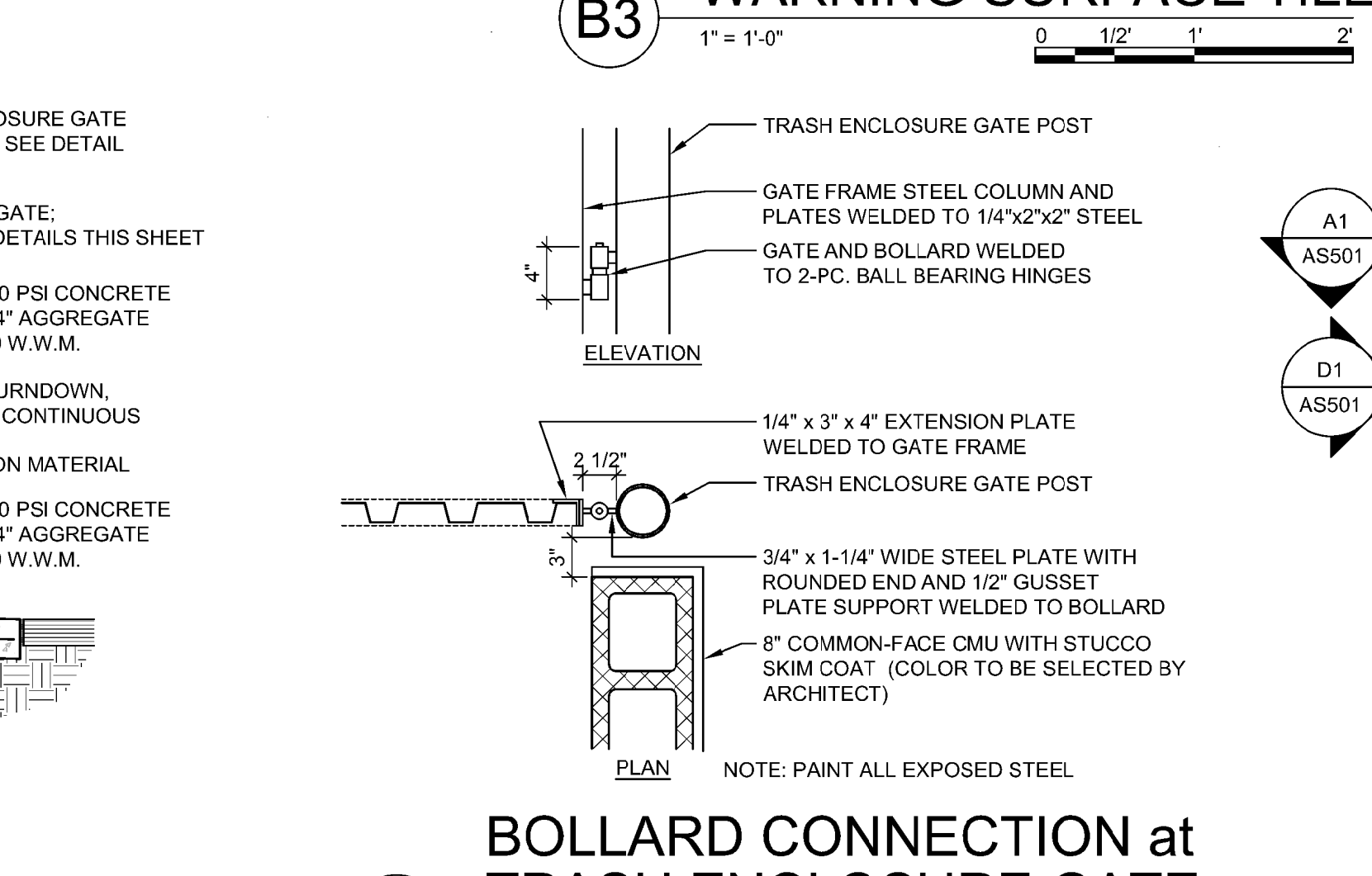
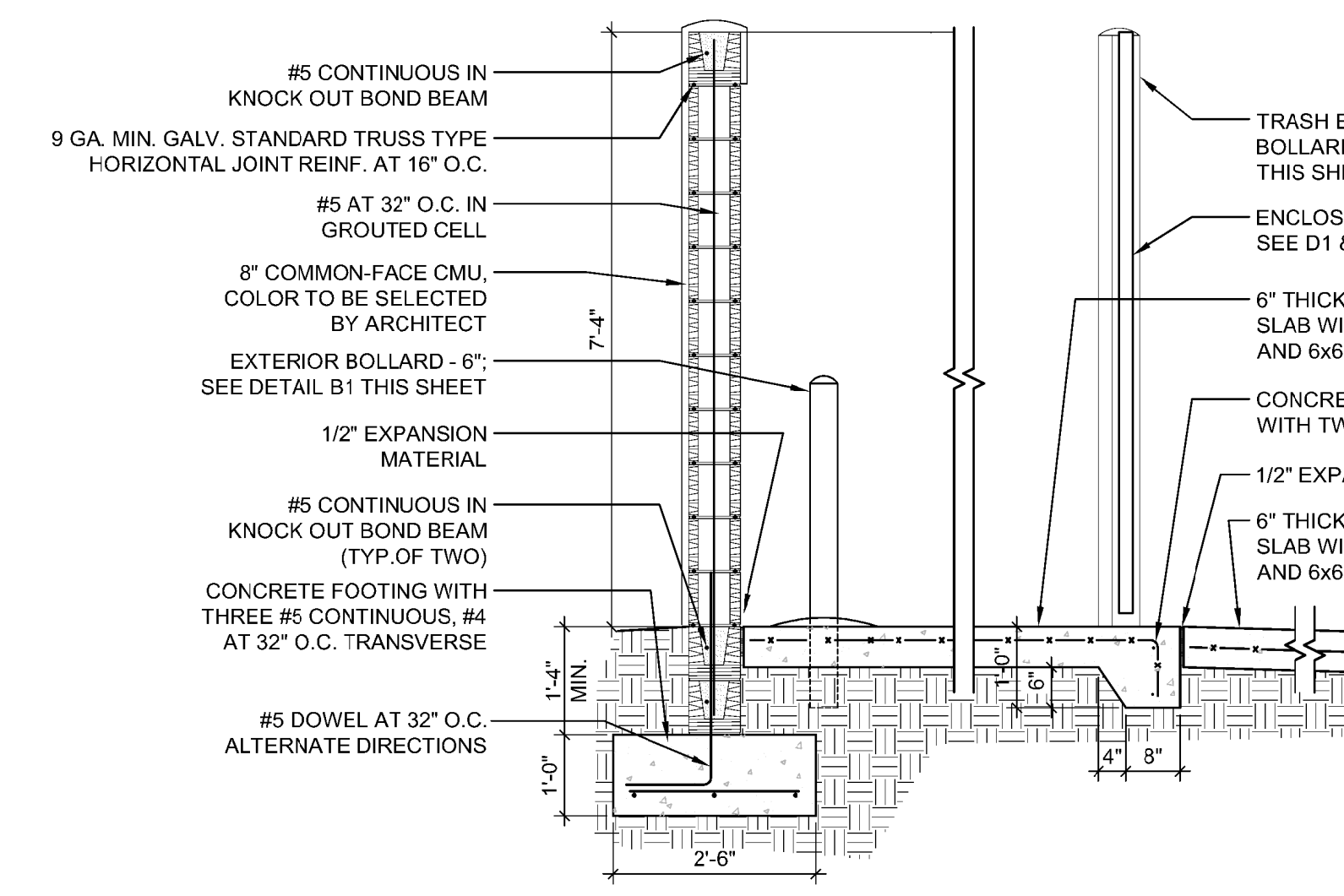
**B1 EXTERIOR BOLLARD - 6"**  
1/2" = 1'-0"

**B2 BICYCLE RACK**  
1/2" = 1'-0"

**B3 DETECTABLE/TACTILE WARNING SURFACE TILE**  
1" = 1'-0"

**B4 SITE LIGHT POLE**  
1/4" = 1'-0"

**B5 PEDESTRIAN LIGHT POLE**  
1/4" = 1'-0"



**A1 TRASH ENCLOSURE CMU WALL and GATE**  
1/2" = 1'-0"

**A2 BOLLARD CONNECTION at TRASH ENCLOSURE GATE**  
1" = 1'-0"

**A4 TRASH ENCLOSURE**  
1/8" = 1'-0"

**A5 TRASH ENCLOSURE**  
1/8" = 1'-0"