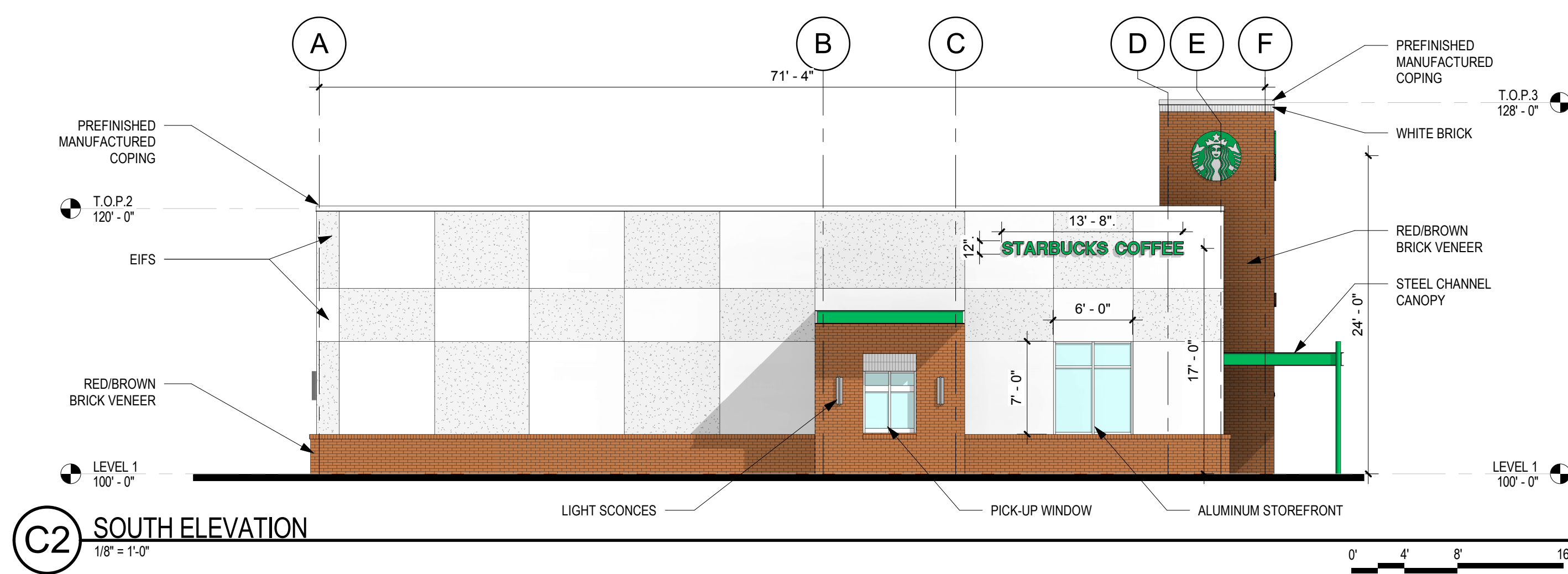
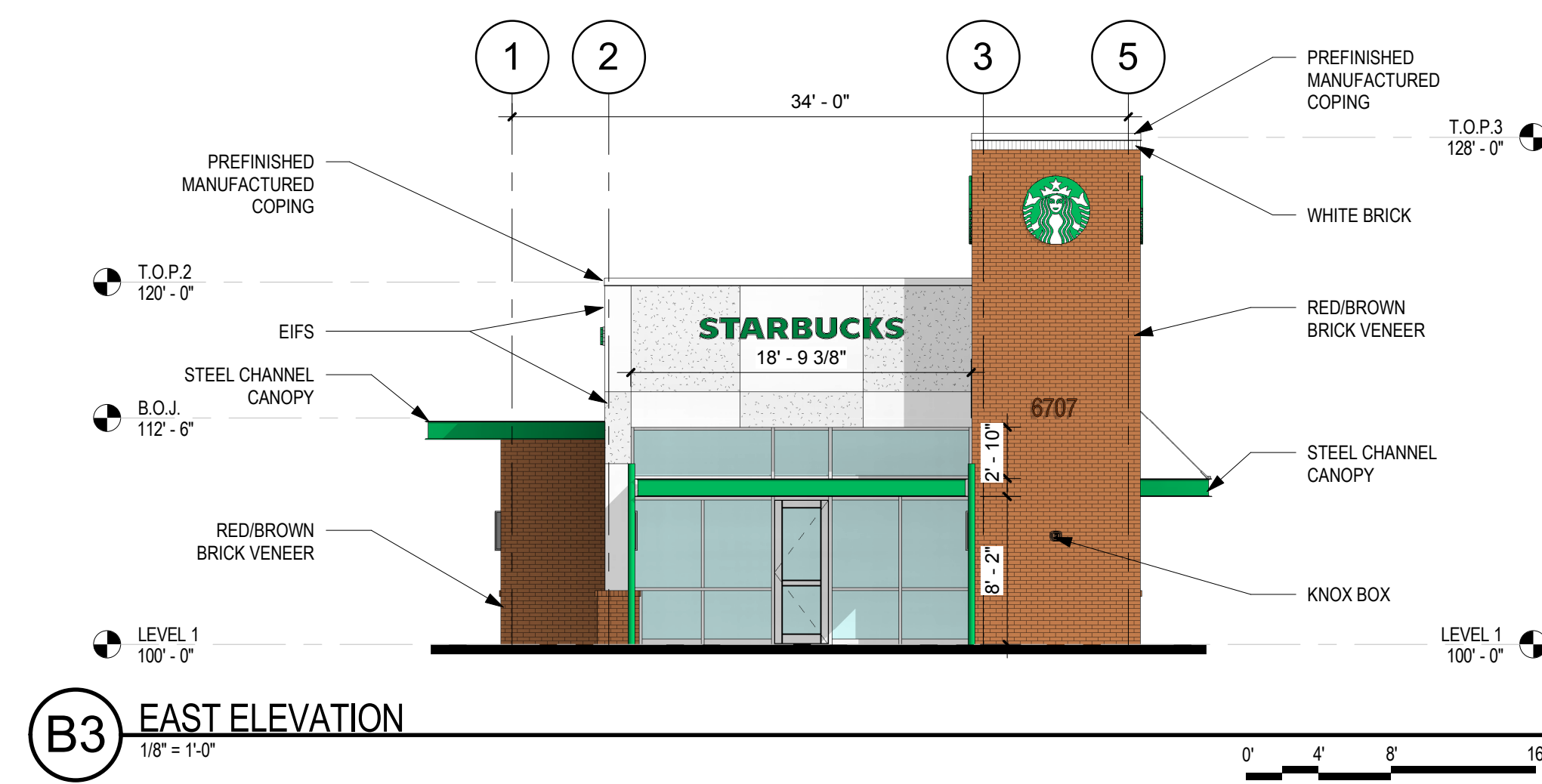


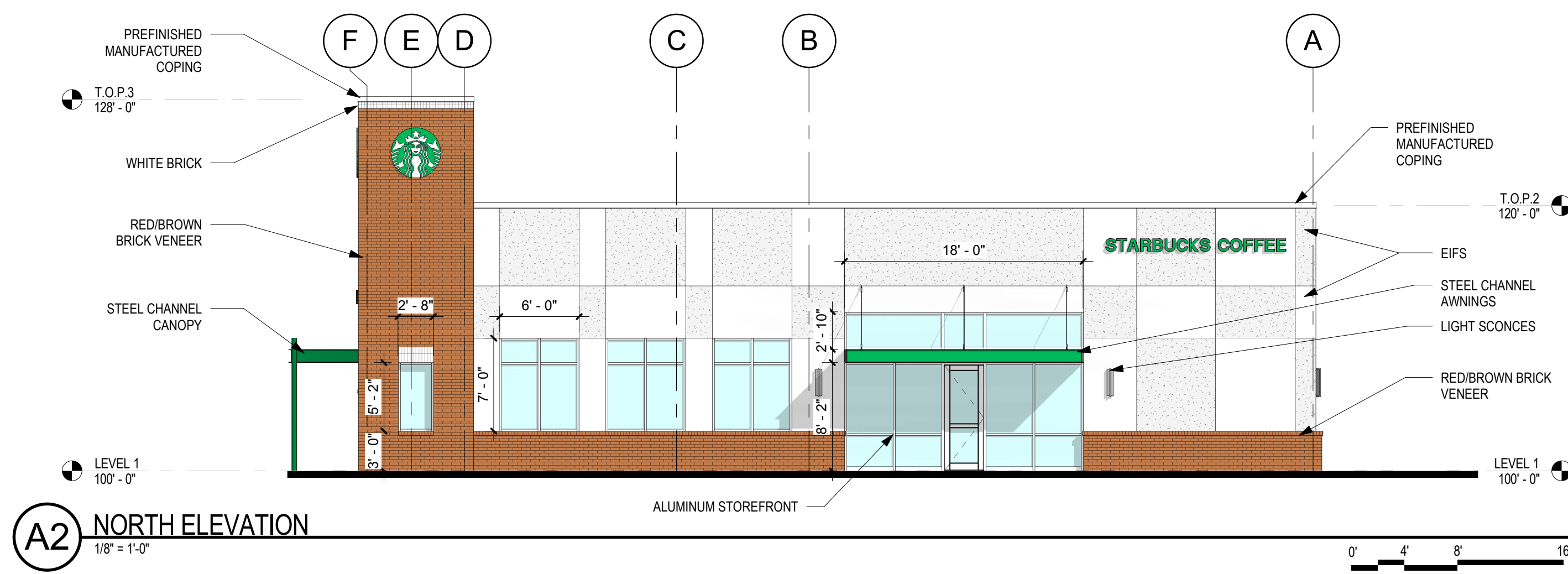
D3 WEST ELEVATION
1/8" = 1'-0"



C2 SOUTH ELEVATION
1/8" = 1'-0"



B3 EAST ELEVATION
1/8" = 1'-0"



A2 NORTH ELEVATION
1/8" = 1'-0"

GENERAL SHEET NOTES

- A. ALIGN CONTROL JOINT TO EDGE OF OPENINGS, UNLESS NOTED OTHERWISE
- B. EXPOSED EXTERIOR STEEL TO BE PAINTED, COLOR TO BE DETERMINED BY ARCHITECT

REFERENCE KEYNOTES

LEGEND

- 2" EXTERIOR INSULATION FINISH SYSTEM (EIFS), ACCENT COLOR GRAY
- 2" EXTERIOR INSULATION FINISH SYSTEM (EIFS), ACCENT COLOR WHITE
- BRICK VENEER, COLOR RED/BROWN

KEY PLAN

