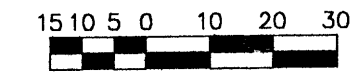
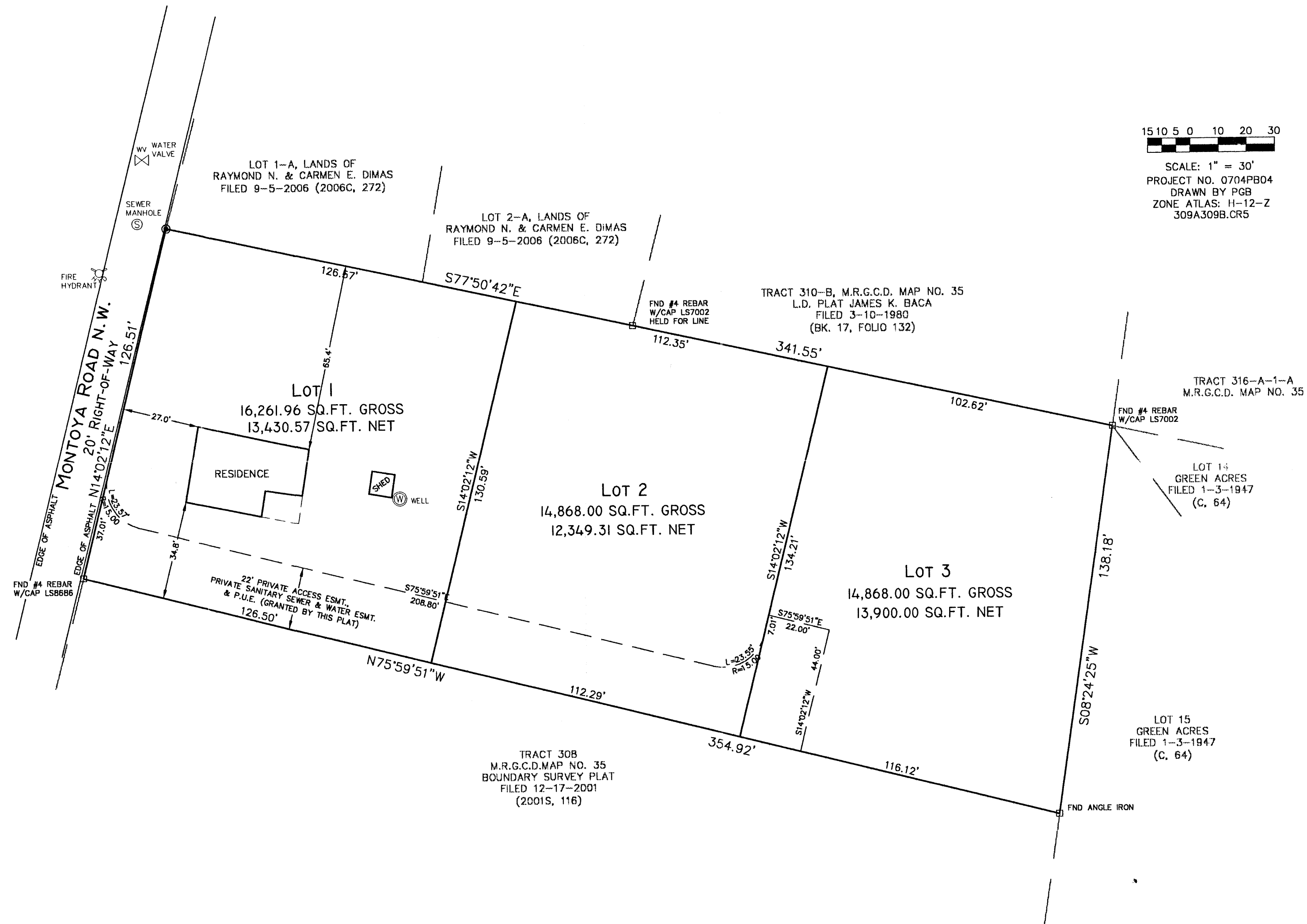


SKETCH PLAT OF
 LOTS 1, 2 & 3
 LANDS OF VENTURA M. RAMIREZ
 SECTION 12, T. 10 N., R. 2 E., N.M.P.M.
 CITY OF ALBUQUERQUE
 BERNALILLO COUNTY, NEW MEXICO
 APRIL 2007
 SHEET 2 OF 2

LEGAL DESCRIPTION

Tracts 309A & 309B, M.R.G.C.D. Map 35 within Section 12, T10N, R2E., N.M.P.M.,
 Albuquerque, New Mexico.



SCALE: 1" = 30'
 PROJECT NO. 0704PB04
 DRAWN BY PGB
 ZONE ATLAS: H-12-Z
 309A309B.CR5



SEWER
 MANHOLE
 (S)

MONUMENT LEGEND	
⊕	FOUND CONTROL STATION AS NOTED
⊠	FOUND MONUMENT AS NOTED
⊙	SET 1/2" REBAR W/RED PLASTIC CAP STAMPED "MWR 11224" UNLESS OTHERWISE NOTED

SURVEYS SOUTHWEST LTD.

333 LOMAS BLVD., N.E.
 ALBUQUERQUE, NEW MEXICO
 87102

PHONE: (505) 998-0303
 FAX: (505) 998-0306

T10N R2E SEC. 12