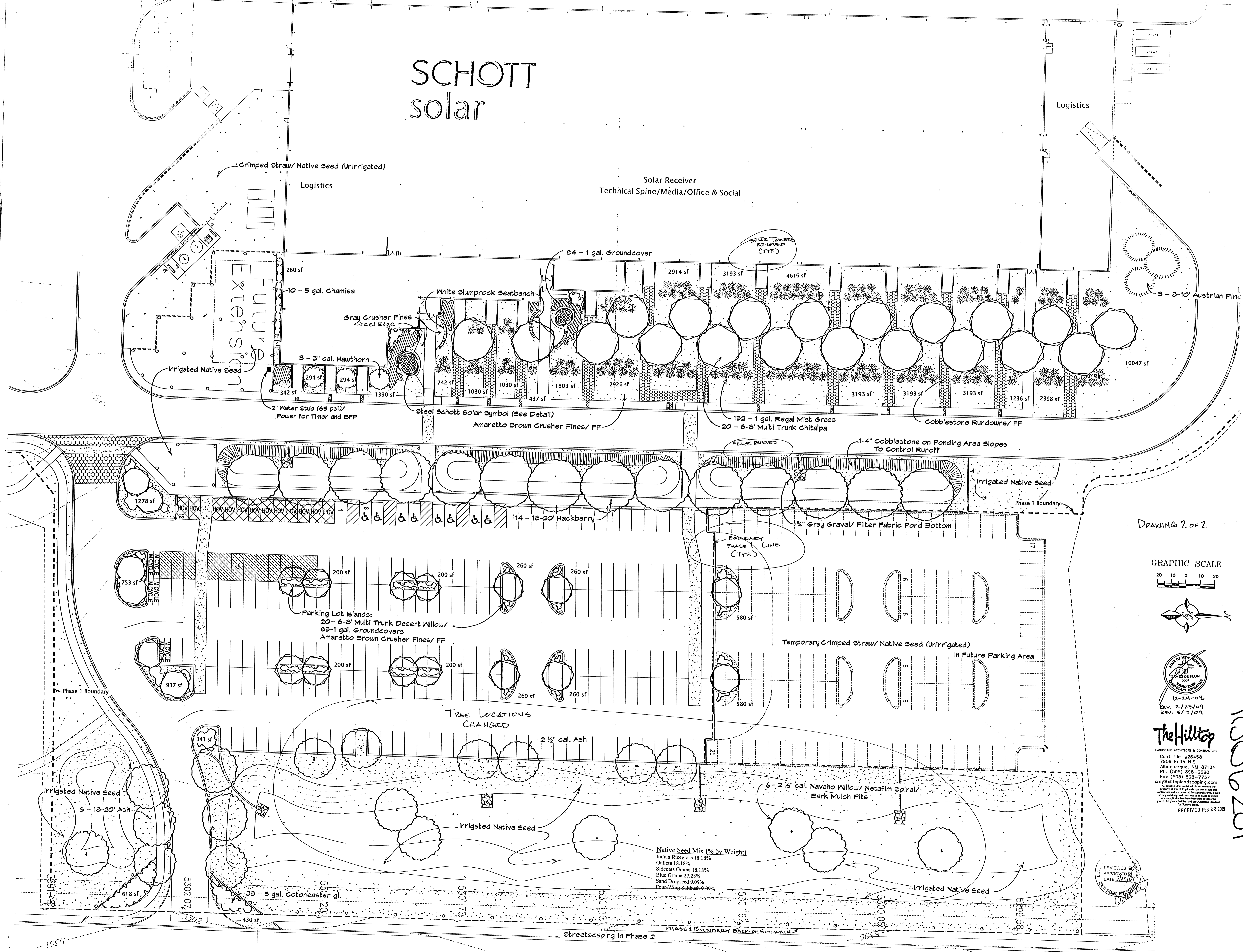
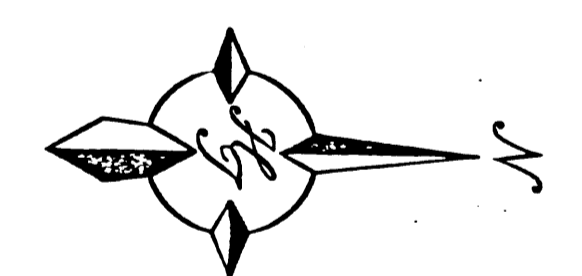
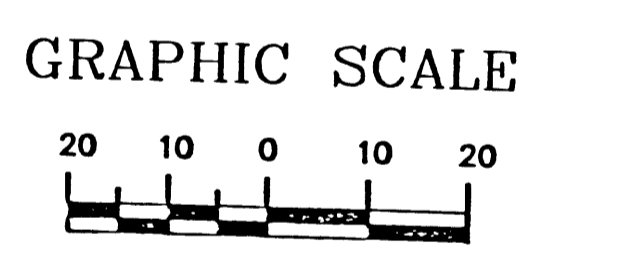


SCHOTT solar



DRAWING 2 OF 2



LANDSCAPE ARCHITECTS & CONTRACTORS
 CONT. LIC. #26458
 7909 Edith N.E.
 Albuquerque, NM 87184
 Ph. (505) 898-9690
 Fax (505) 898-7737
 cmj@hilltoplandscaping.com

12-24-08
 Rev. 2/23/09
 Rev. 5/7/09

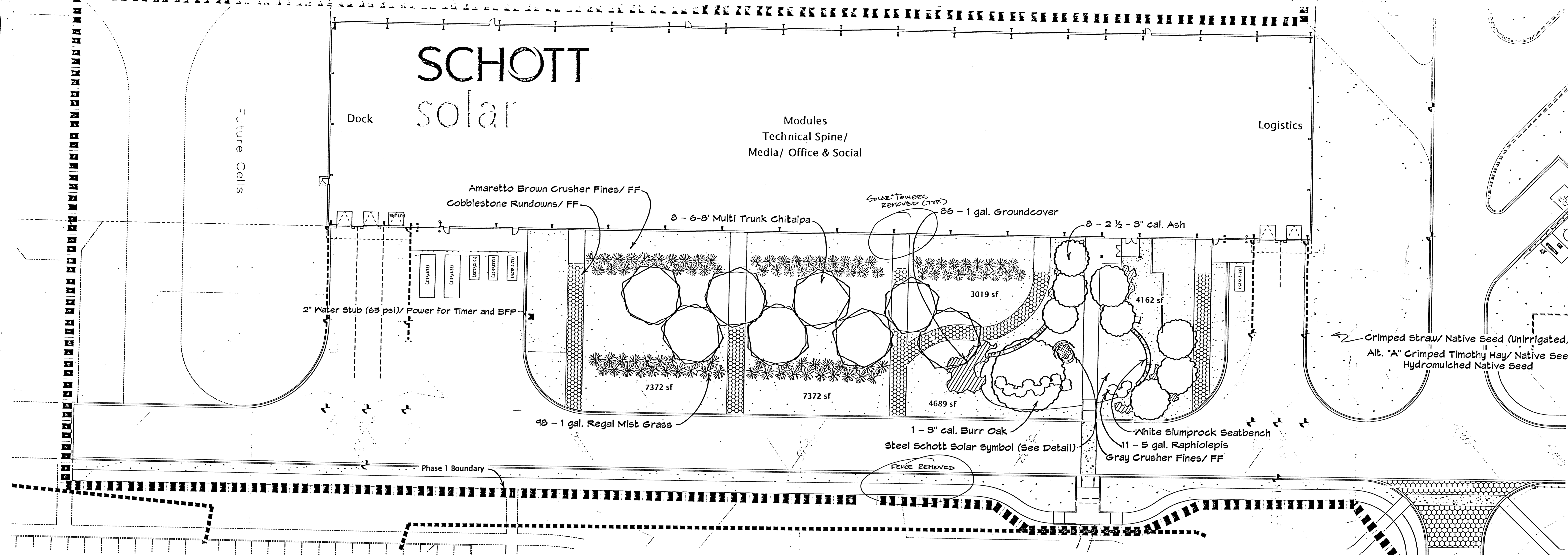
The Hilltop
 LANDSCAPE ARCHITECTS & CONTRACTORS
 Cont. Lic. #26458
 7909 Edith N.E.
 Albuquerque, NM 87184
 Ph. (505) 898-9690
 Fax (505) 898-7737
 cmj@hilltoplandscaping.com

RECEIVED FEB 23 2009

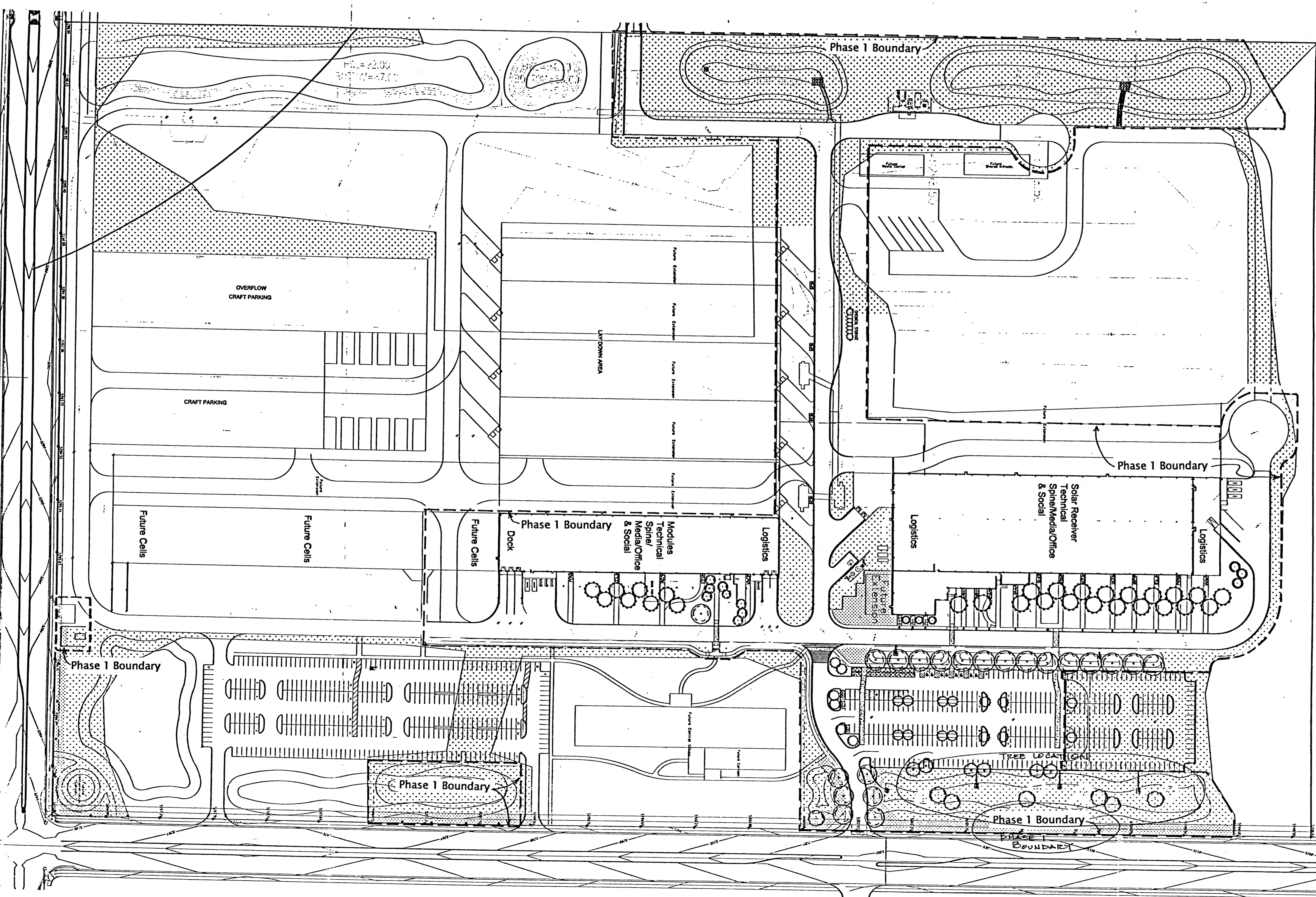
- Native Seed Mix (% by Weight)**
- Indian Ricegrass 18.18%
 - Galletta 18.18%
 - Sideoats Grama 18.18%
 - Blue Grama 27.28%
 - Sand Dropseed 9.09%
 - Four-Wing Saltbush 9.09%

REVIEWED & APPROVED
 DATE 2/23/09

1006201

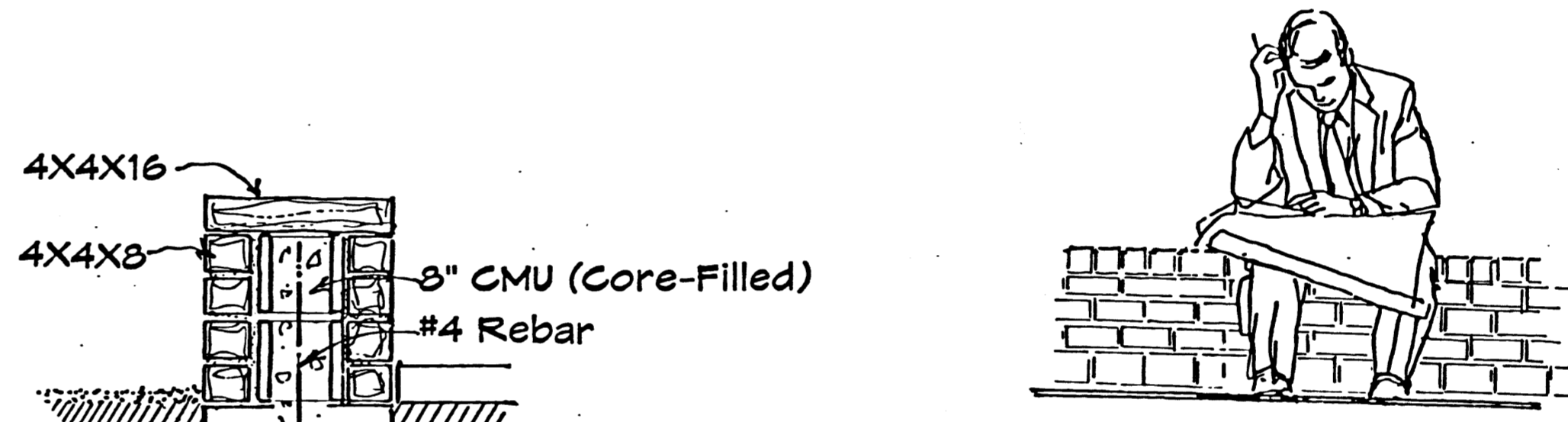


Scale: 1" = 20'

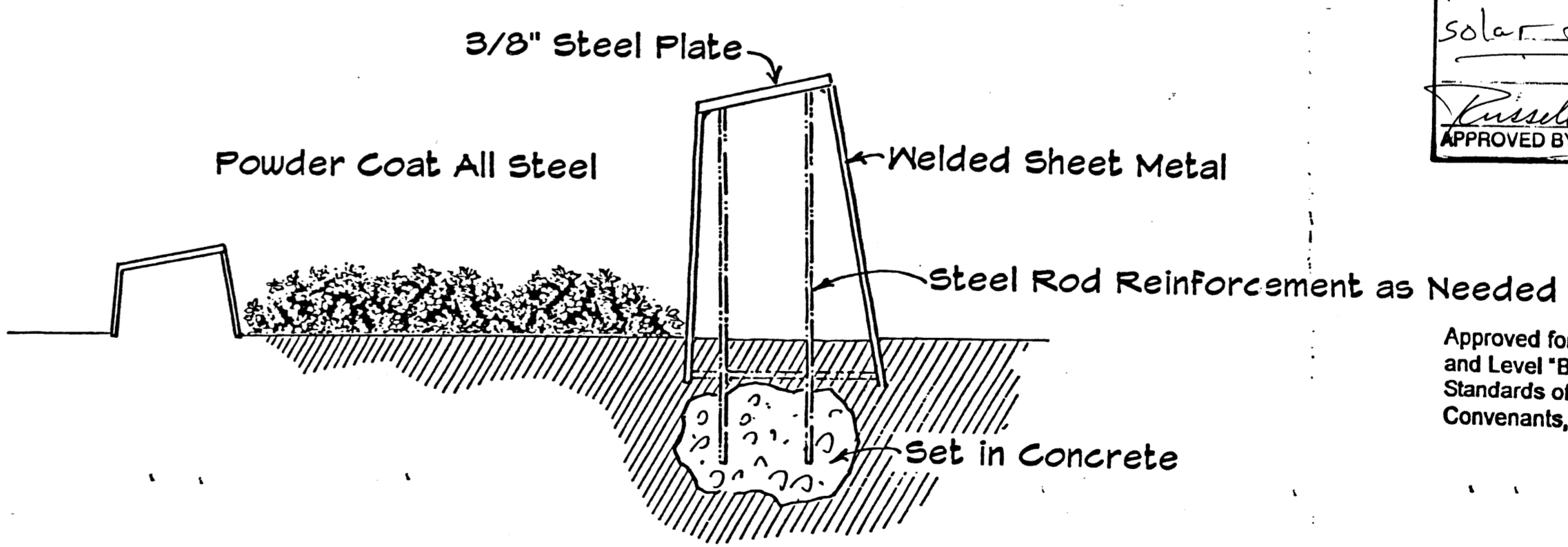
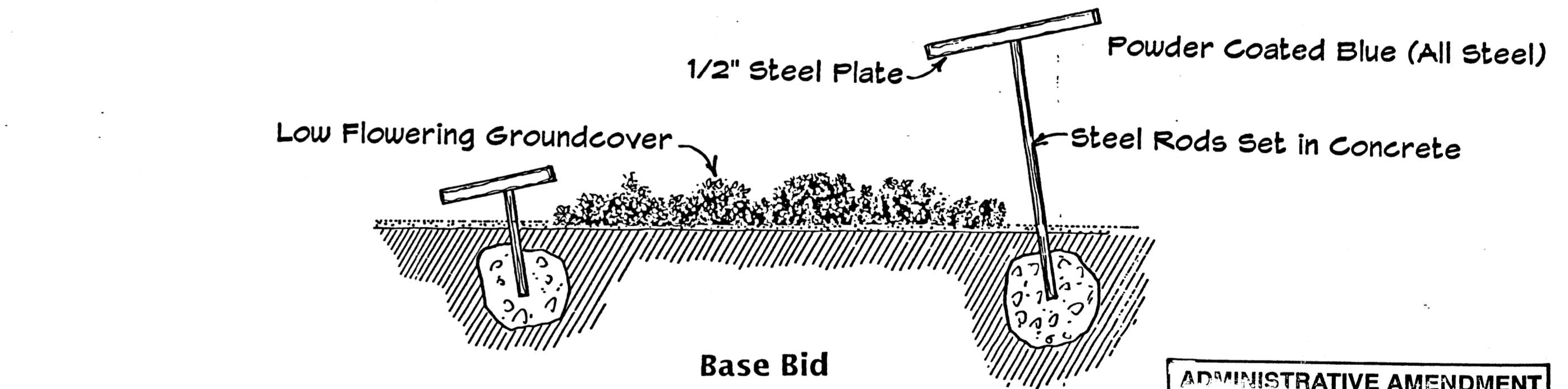


Scale: 1" = 100'

Site Plan

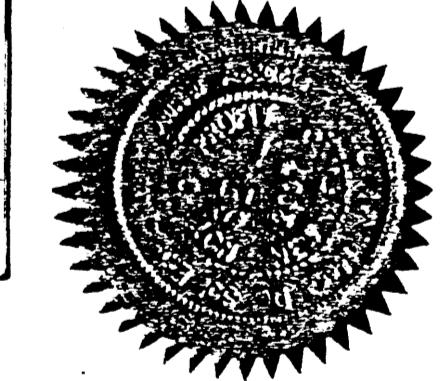


White Slumprock Masonry Seatbench Detail (NTS)

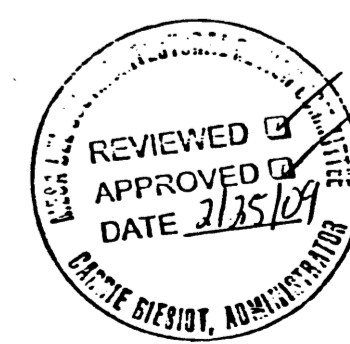


Alternate Upgrade
Section: Schott Solar Symbol (NTS)

ADMINISTRATIVE AMENDMENT
 For: CMAA/CD/Propose 1006201
 Revised Landscaping and
 Solar Towers removed
 Approved by: *[Signature]*
 APPROVED BY



Approved for compliance with PC Zoning Level "A" and Level "B" Plans and compliance with the Design Standards of the Mesa del Sol Employment Center Conventions, Conditions & Restrictions.
 Architectural Review Committee
 Mesa del Sol Employment Center
 By: *[Signature]*
 Carrie Biesol, Administrator



The Hilltop
 LANDSCAPE ARCHITECTS & CONTRACTORS
 Cont. Lic. #26458
 7909 Edith N.E.
 Albuquerque, NM 87184
 Ph. (505) 898-9690
 Fax (505) 898-7737
 cmj@hilltoplandscaping.com
 All services are provided under the terms of the program of The Hilltop Landscape Architects and Contractors and are provided at the discretion of the firm. No part of this drawing shall be used or reproduced in any form without the written consent of The Hilltop Landscape Architects and Contractors.

12-24-08
 Rev. 2/13/09
 Rev. 5/1/09

DRAWING 1 OF 2