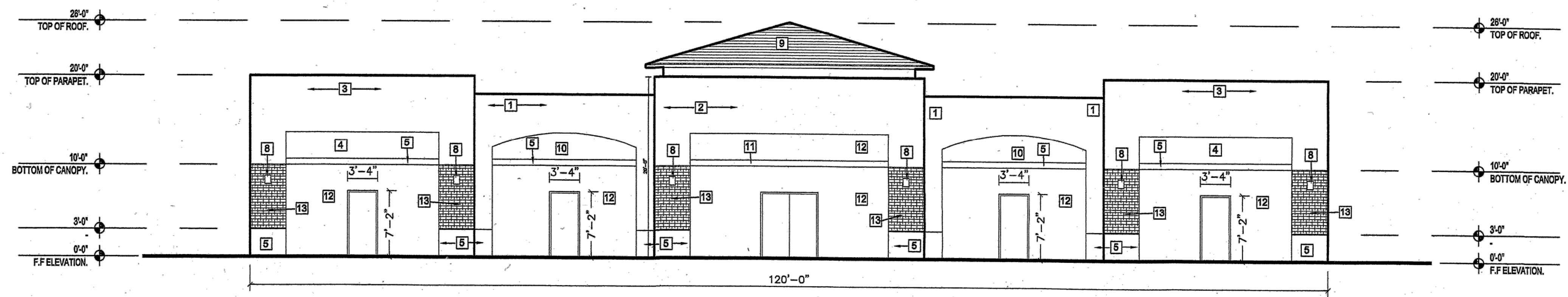
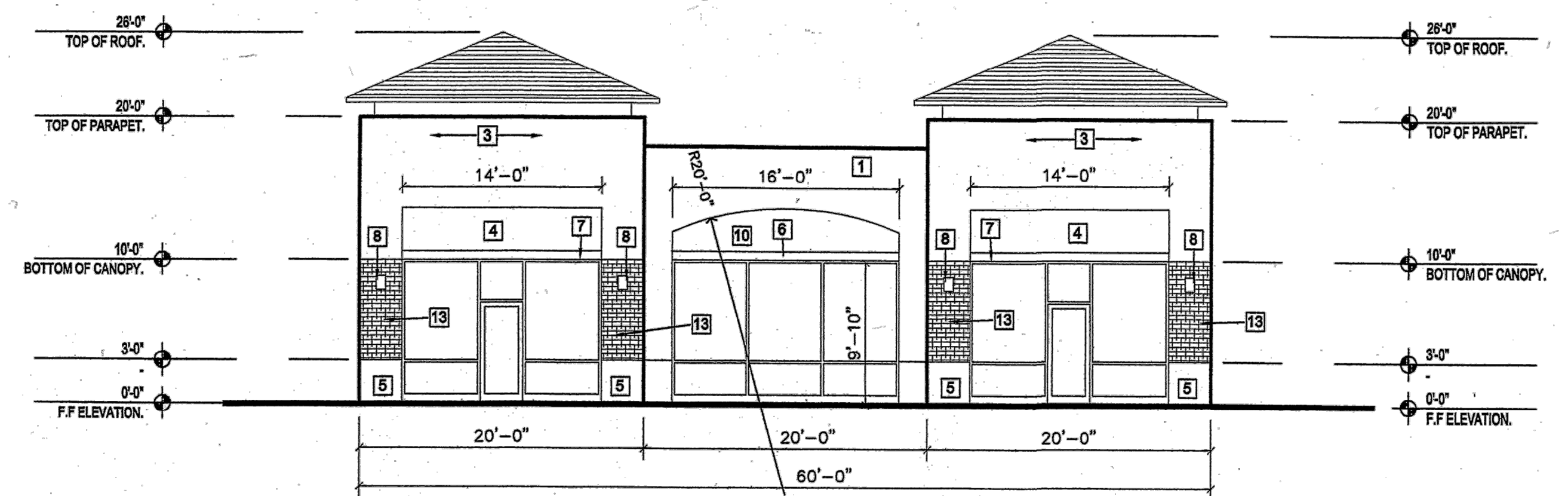


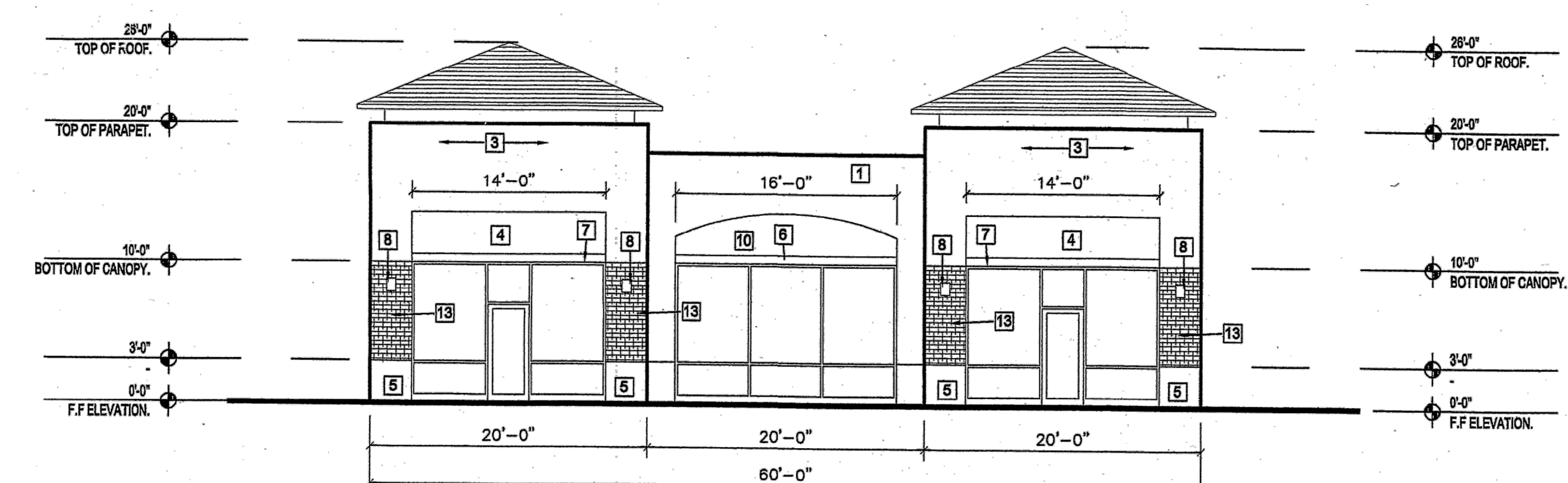
A NORTH ELEVATION
1/8"=1'-0"



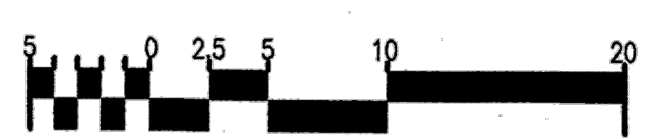
B SOUTH ELEVATION
1/8"=1'-0"



C WEST ELEVATION
1/8"=1'-0"

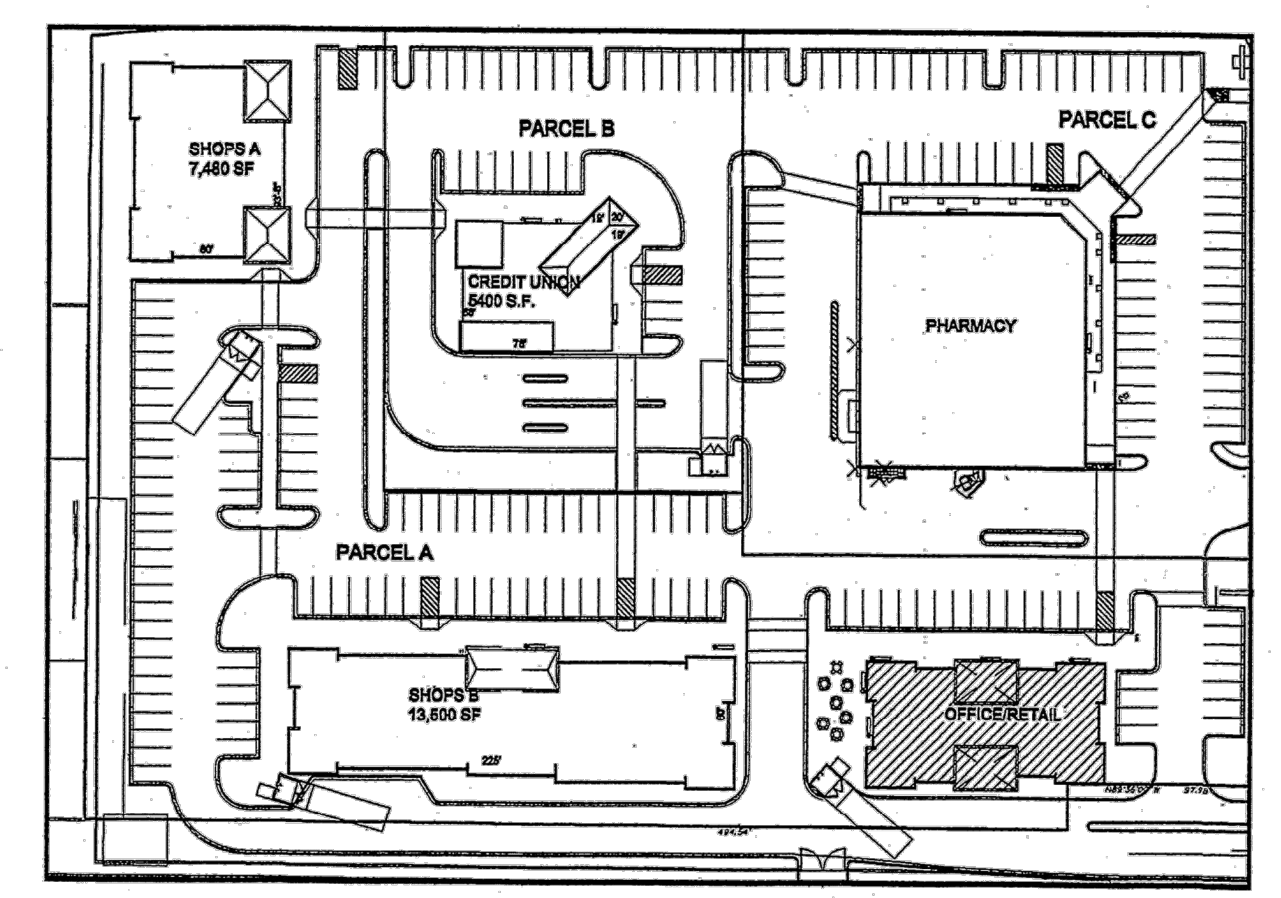


D EAST ELEVATION
1/8"=1'-0"



Keyed Color	Material Schedule	Common Name
1	STUCCO NAPERY SW 6386	CREAM
2	STUCCO TARAMI TAN SW 6116	LIGHT BROWN
3	STUCCO UNCRAIN GRAY SW 6234	GRAY
4	STUCCO ICY SW 6534	LIGHT GRAY
5	STUCCO COLLECTOR'S WHITE SW 1907 LRV 87%	WHITE
6	TUBE STEEL CANOPY DARK BRONZE	DARK BRONZE
7	TUBE STEEL CANOPY COLLECTOR'S WHITE SW 1907 LRV 87%	WHITE
8	LIGHT FIXTURE BLACK	BLACK
9	TILE ROOF LIGHT GRAY FLAT CONCRETE TILE	LIGHT GRAY
10	STUCCO MESA TAN SW 2208	TAN
11	STUCCO BLACK SWAN SW 6279	BLACK
12	STUCCO ICY SW 6534	LIGHT GRAY
13	CULTURED STONE VENEER BROWN	BROWN

NOTES:
 SIGNS NOT TO EXCEED 6% OF THE FACADE TO WHICH IT IS APPLIED FOR SHOPS A, CREDIT UNION AND PHARMACY.
 SIGNS NOT TO EXCEED 8% OF THE FACADE TO WHICH IT IS APPLIED FOR SHOPS B, AND OFFICE/RETAIL.
 SIGNS TO CONSIST OF INDIVIDUAL ALUMINUM PAN CHANNEL LETTERS, INTERNALLY ILLUMINATED, NO SIGN TO FACE RESIDENTIAL AREAS.



E KEY PLAN
NTS

2 8/31/2017; REVISE BUILDING ELEVATIONS FOR PARCEL A-2-B. REF. SHEET A5.1 AND A5.2 FOR REVISED BUILDING ELEVATIONS.

REV	DATE	BY	REVISION
6			
5			
4			
3			
2			
1			

GEORGE RAINHART, ARCHITECT AND ASSOCIATES P.C.
 2325 SAN PEDRO NE., SUITE 2-B
 ALBUQUERQUE, NEW MEXICO 87110
 PHONE (505) 884-9110 FAX (505) 837-9877

PROJECT TITLE
 PASSEO DEL NORTE & VENTURA
 PASSEO DEL NORTE AND VENTURA
 ALBUQUERQUE, NM

PROJECT MANAGER
 JONI STERN

DRAWN BY
 NAH

JOB NO.
 0717

SHEET TITLE
 ELEVATIONS OFFICE/RETAIL

DATE: 6.22.07
SCALE: 1/8"=1'
sheet: A3.4
 of

APPROVED DRB