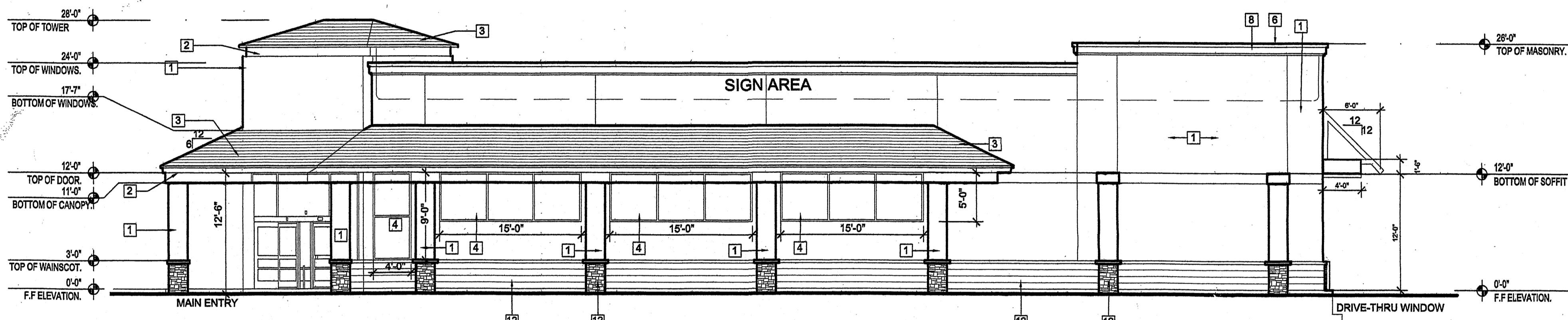
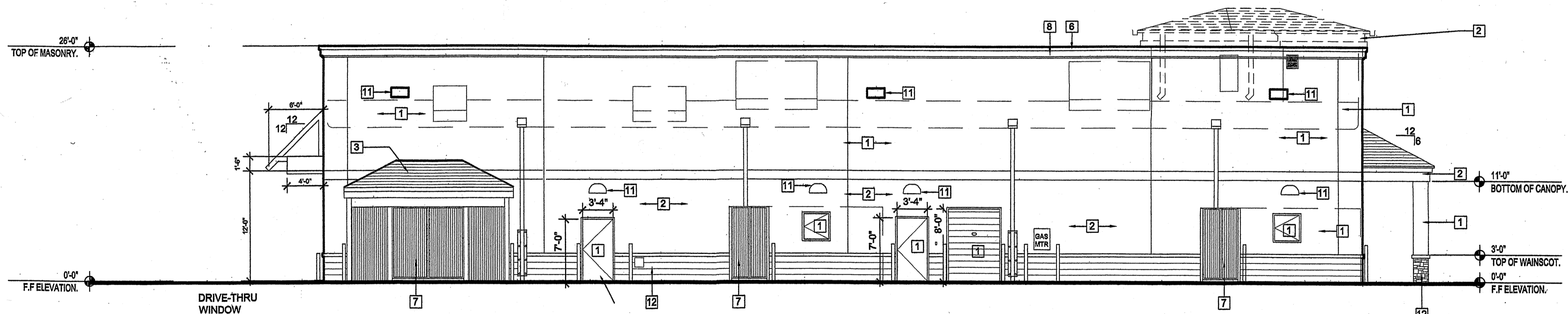


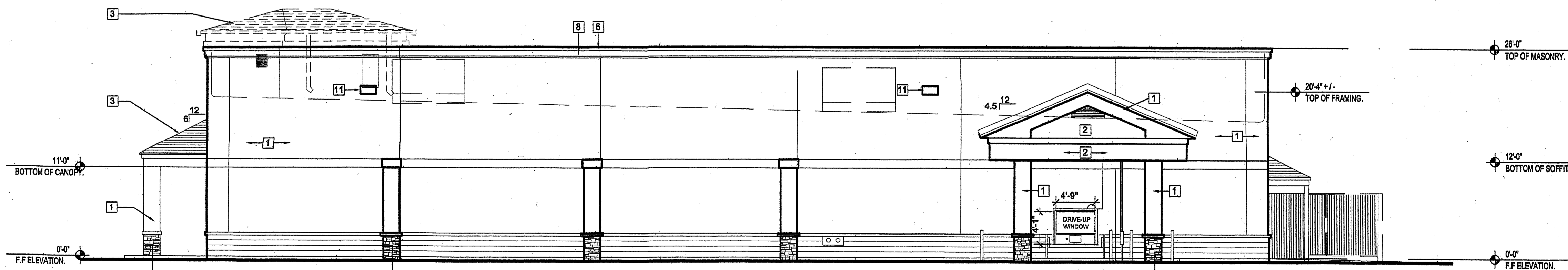
A EAST ELEVATION
1/8"=1'-0"



B NORTH ELEVATION
1/8"=1'-0"



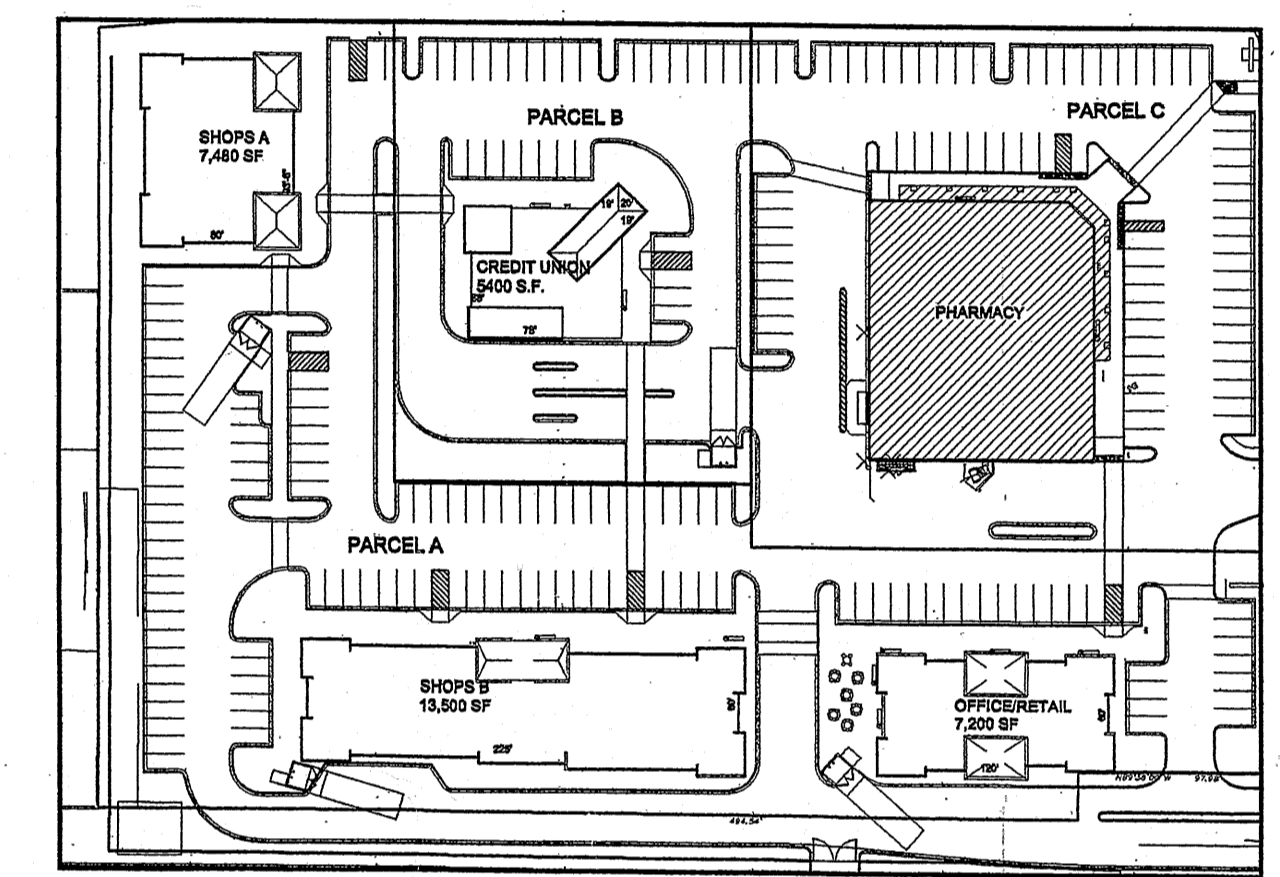
C SOUTH ELEVATION
1/8"=1'-0"



D WEST ELEVATION
1/8"=1'-0"



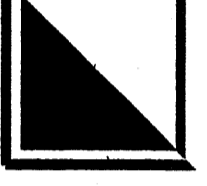
Keyed Color	Material Schedule	Common Name
1	STUCCO BM 981 "BONE WHITE"	LIGHT BEIGE
2	STUCCO BM HC-48 "BRADSTREET BEIGE"	WARM BROWN
3	TILE ROOF LIGHT GRAY FLAT CONCRETE TILE	LIGHT GRAY
4	GLASS 1" INSUL. LOW E GLASS W/ CLEAR ANOD. FRAME	CLEAR
5	GLASS 1/4" CLEAR	CLEAR
6	PARAPET CAP UNA-CLAD "ALMOND"	WARM BROWN
7	STORAGE GATES BM HC-48 "BRADSTREET BEIGE"	WARM BROWN
8	CORNICE BM HC-48 "BRADSTREET BEIGE"	WARM BROWN
9	NOT USED	
10	BLOCK CAP INTEGRAL COLOR	WARM BROWN
11	LIGHT FIXTURE DARK BRONZE	DARK BRONZE
12	CULTURED STONE VENEER BROWN	BROWN

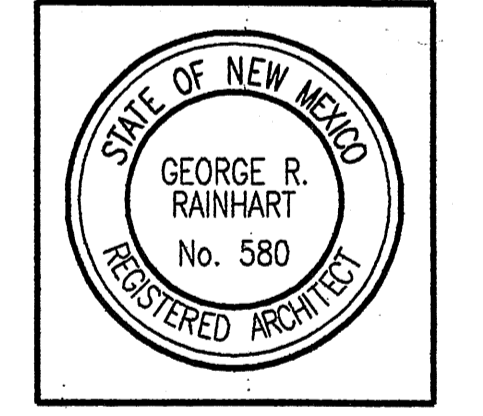


E KEY PLAN
NTS

NOTES:
 SIGNS NOT TO EXCEED 8% OF THE FACADE TO WHICH IT IS APPLIED FOR SHOPS A, CREDIT UNION AND PHARMACY.
 SIGNS NOT TO EXCEED 8% OF THE FACADE TO WHICH IT IS APPLIED FOR SHOPS B, AND OFFICE/RETAIL.
 SIGNS TO CONSIST OF INDIVIDUAL ALUMINUM PAN CHANNEL LETTERS, INTERNALLY ILLUMINATED, NO SIGN TO FACE RESIDENTIAL AREAS.

REV	DATE	BY	REVISION
1	2.14.08	JS	DRB COMMENTS
2	12.10.07	JS	EPC CONDITIONS
3	11.01.07	JS	PLANNER COMMENTS


GEORGE RAINHART, ARCHITECT AND ASSOCIATES P.C.
 2325 SAN PEDRO NE., SUITE 2-B
 ALBUQUERQUE, NEW MEXICO 87110
 PHONE (505) 884-9110 FAX (505) 837-9877



PROJECT TITLE: **PASEO DEL NORTE & VENTURA**
 PASO DEL NORTE AND VENTURA
 ALBUQUERQUE, NM
 PROJECT MANAGER: **JOHN STERN**
 SHEET TITLE: **ELEVATIONS PHARMACY**
 DRAWN BY: **IMH**

DATE: 6.22.07
 SCALE: 1/8"=1'
 SHEET: **A3.1**
 OF: 01

APPROVED DRB